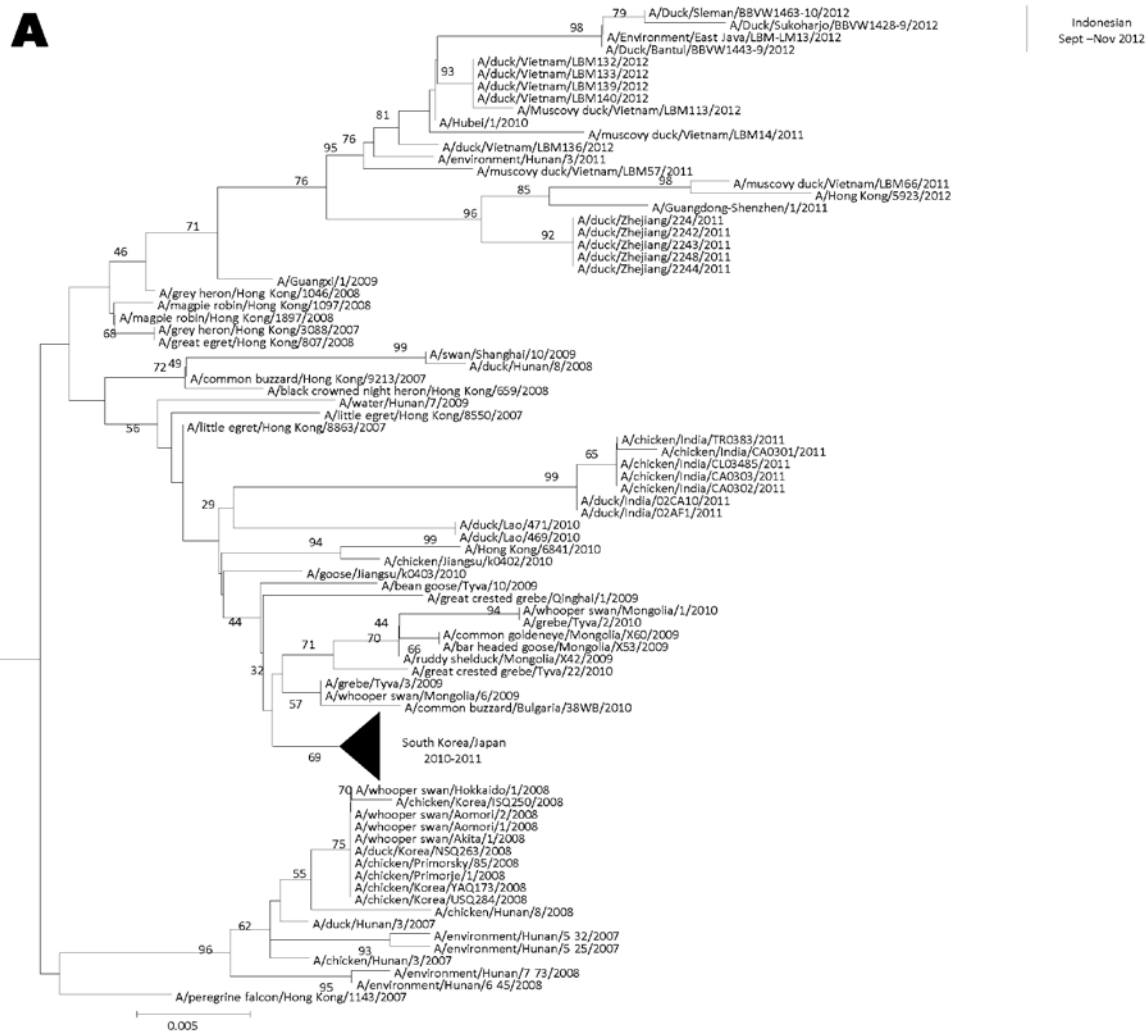


Genetic Characterization of Clade 2.3.2.1 Avian Influenza A(H5N1) Viruses, Indonesia, 2012

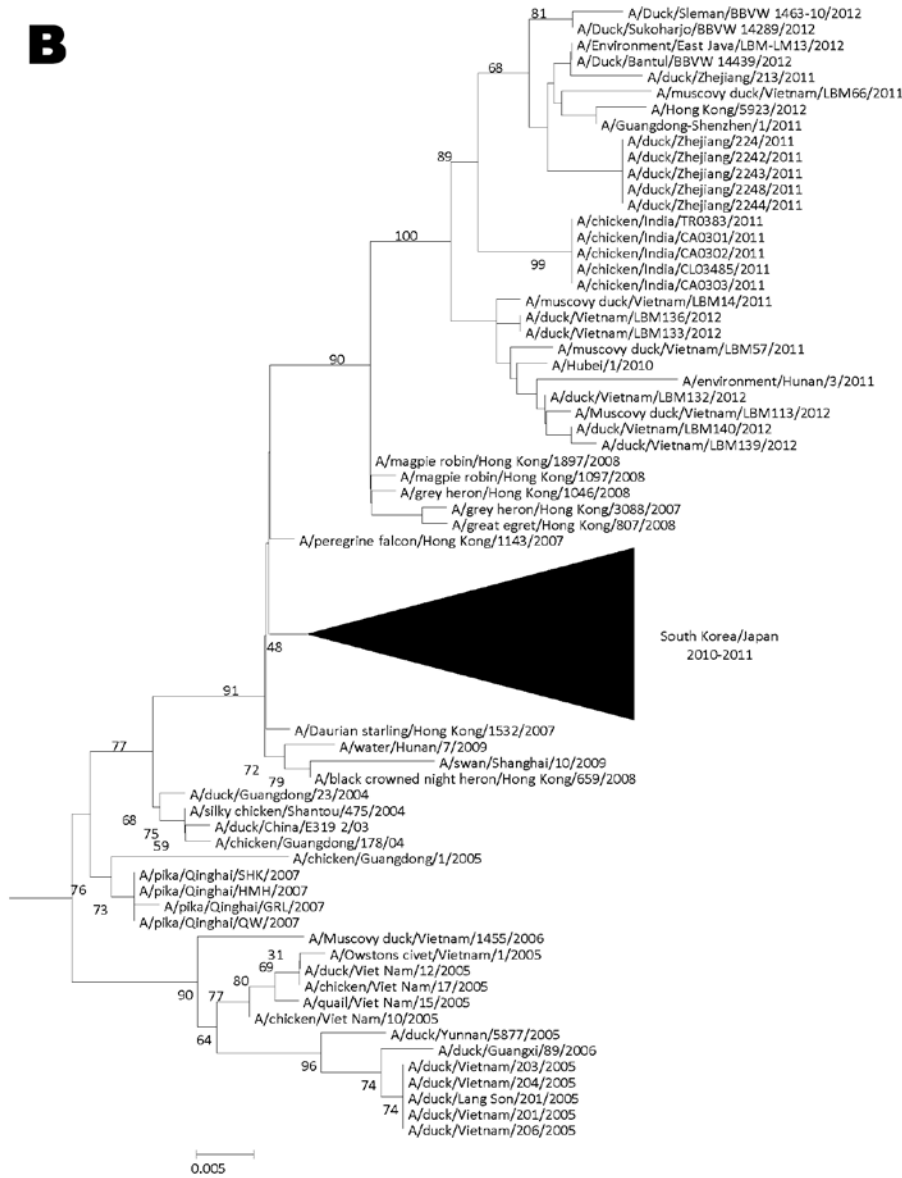
Ni Luh Putu Indi Dharmayanti, Risza Hartawan, Pudjiatmoko, Hendra Wibawa, Hardiman, Amanda Balish, Ruben Donis, C. Todd Davis, and Gina Samaan

Technical Appendix 1.

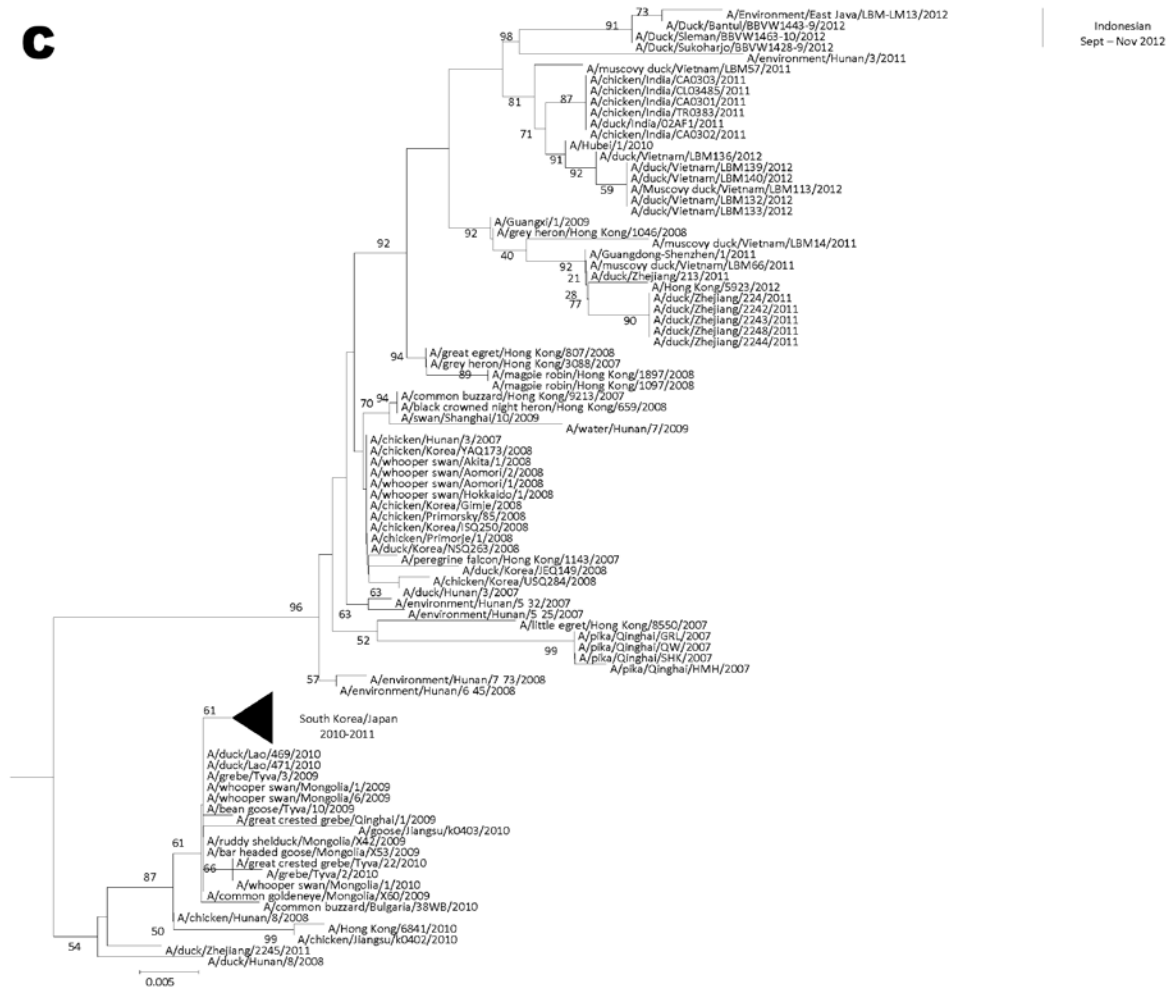


B

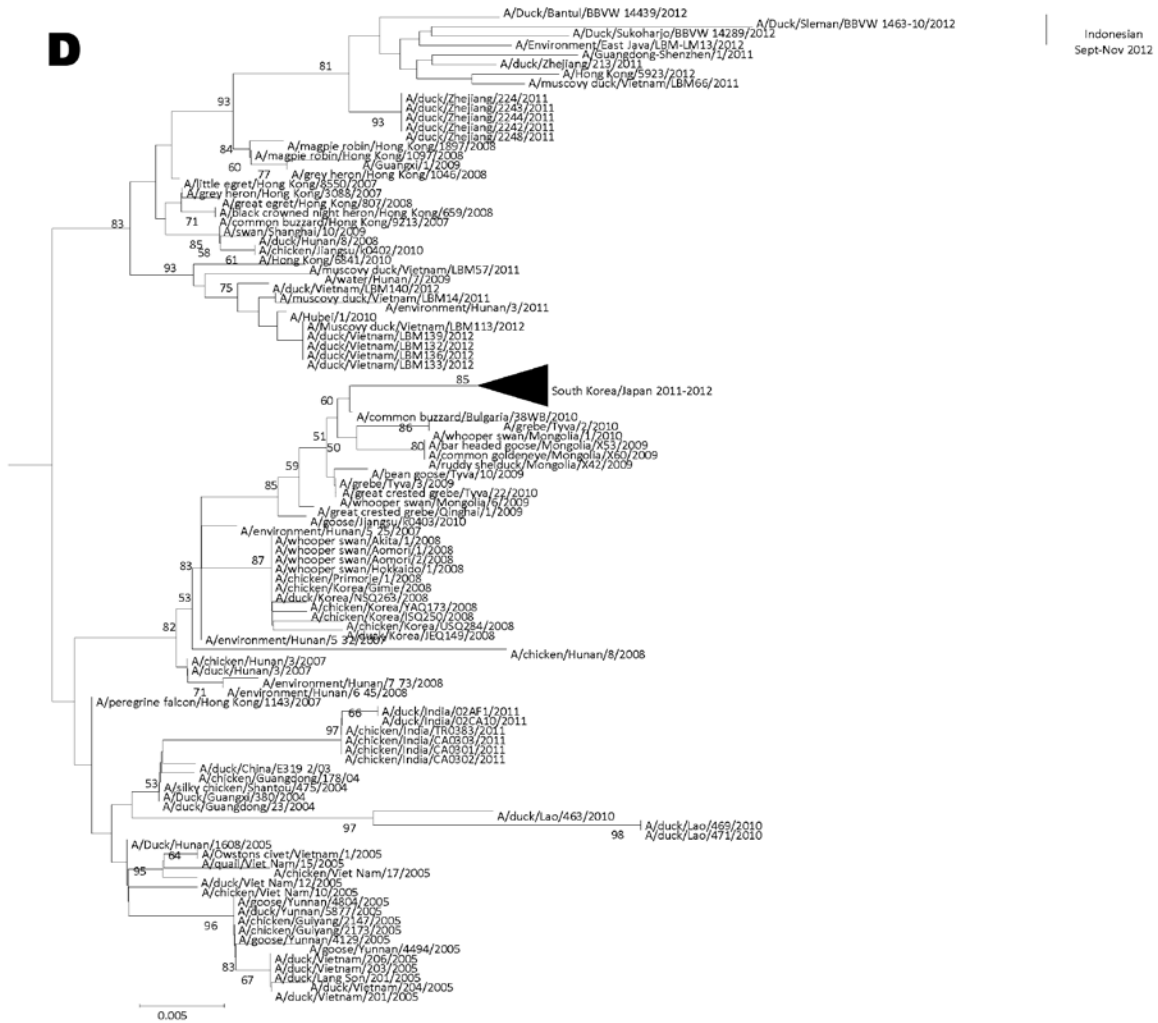
Indonesian
Sept - Nov 2012



C

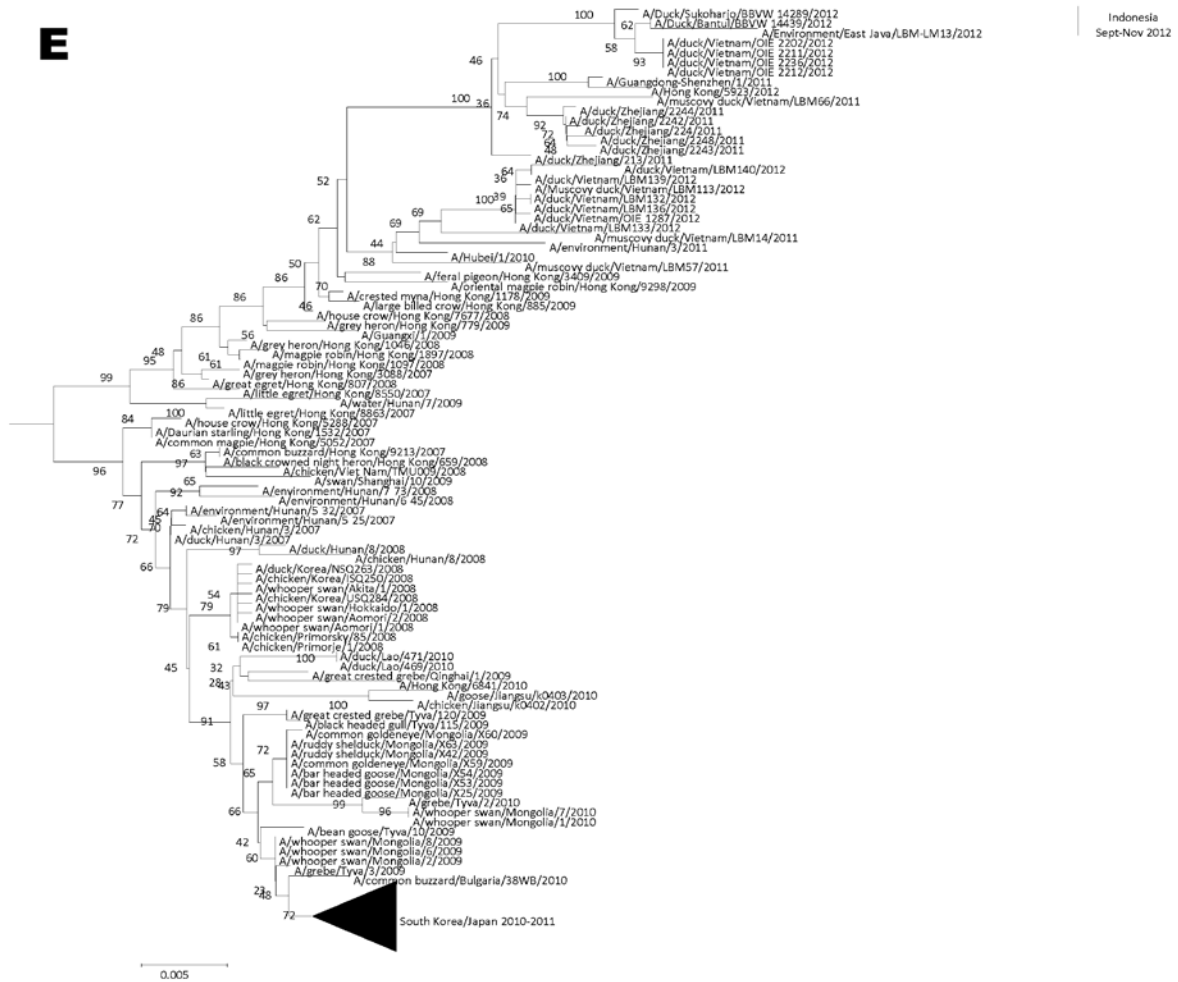


D

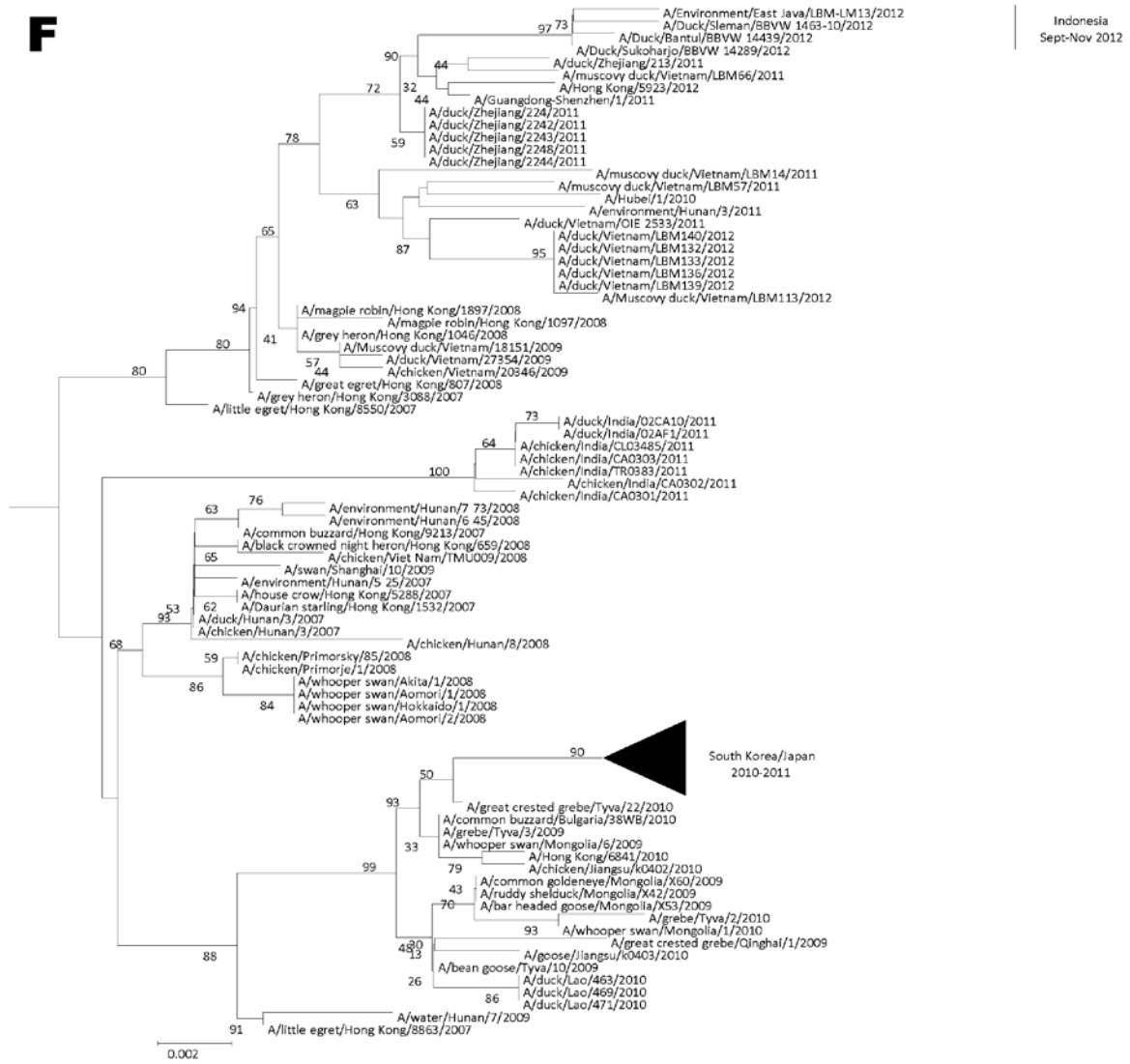


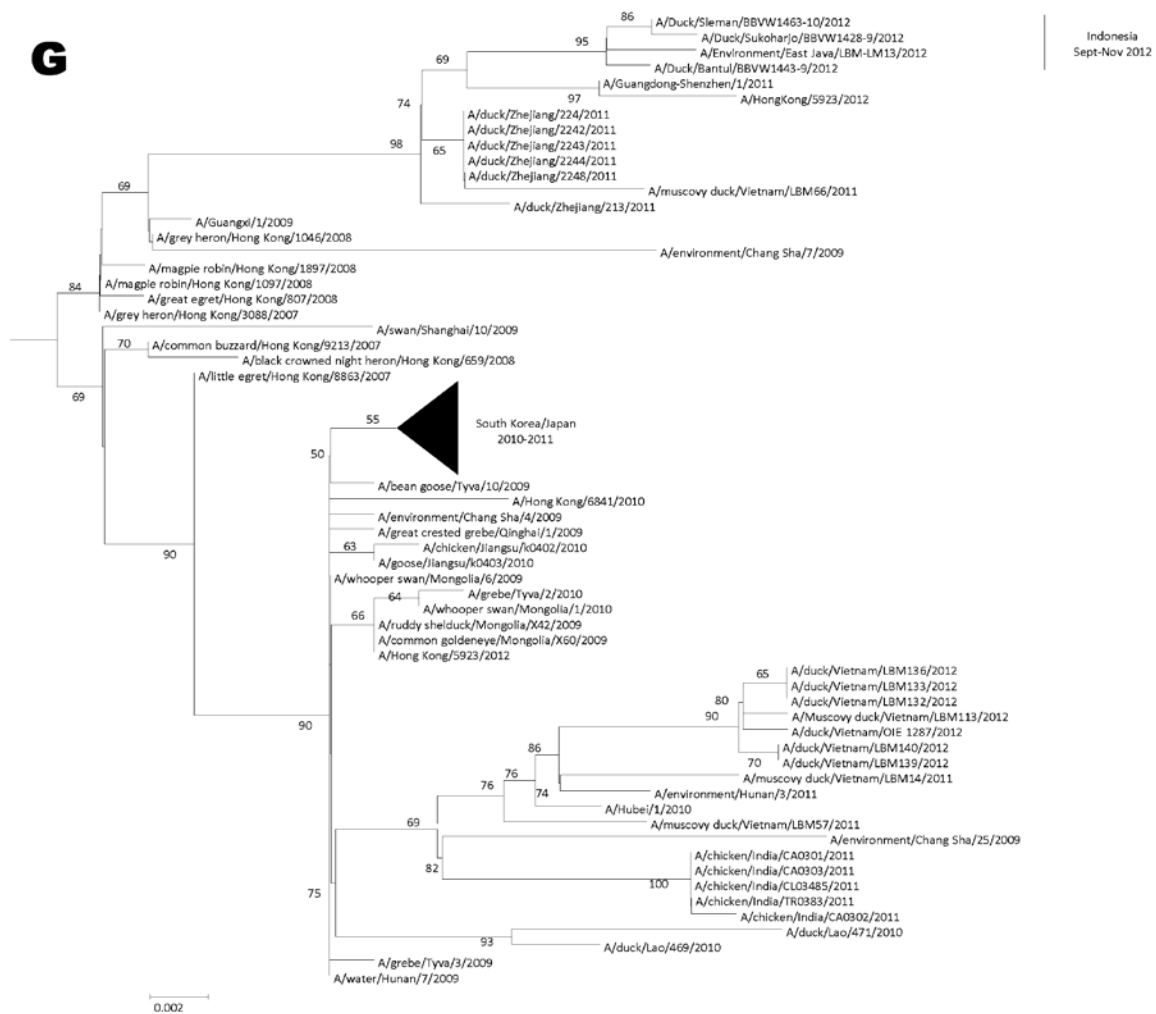
Indonesian
Sept-Nov 2012

E



F





Technical Appendix 1, A–G. Phylogenetic tree of PB2, PB1, PA, NP, NA, M, NS (A = PB2; B = PB1; C = PA; D = NP; E = NA; F = M; G = NS). The phylogenetic tree was generated in MEGA version 4, using neighbor-joining analysis with 1000 bootstrap replicates using the Kimura-2 parameter model. Viruses characterized in this study are indicated with a bar showing samples collected in Indonesia from September to November 2012.