

Flooding Rains Fall Across Florida

Fact Sheet

Event date: March 13, 1993

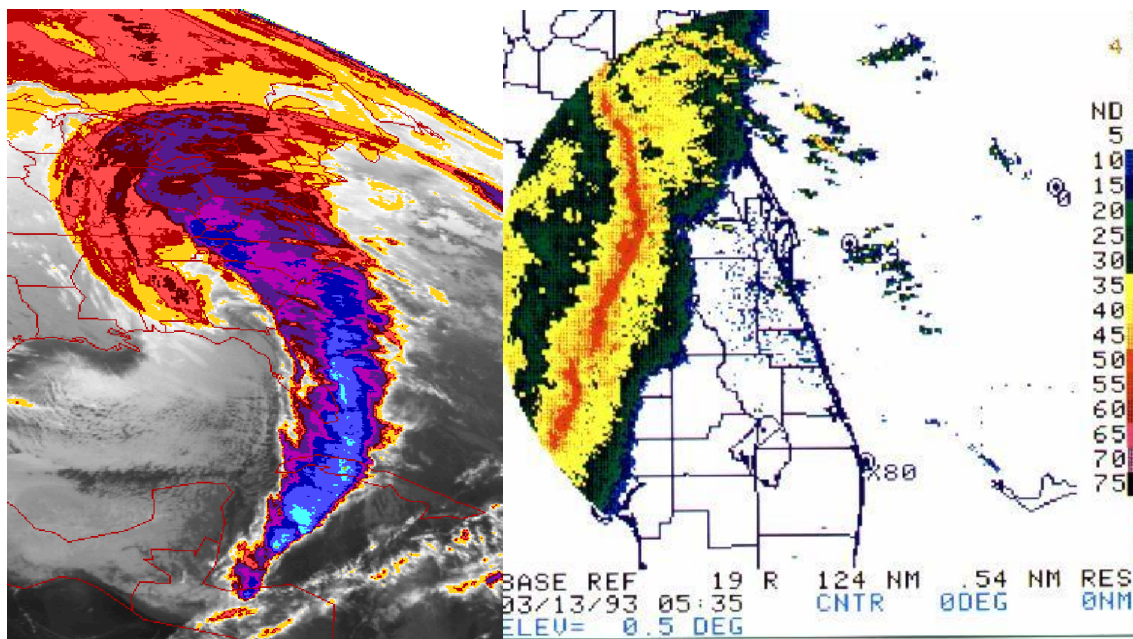


Figure 1. (Left) Satellite image of the March 13, 1993 “storm of the century” at 10:01 UTC. (Right) Radar reflectivity of the “derecho” moving across Florida.

Summary of event: Flood waters about 9 feet deep inundated the coastal area with most residents in water chest deep. One person suffered a heart attack and died attempting to evacuate out of the flooded area. An elderly woman drowned in her home. Sixty-one homes were destroyed, 3,300 damaged, and 100 people evacuated. Thirty-four people had to be evacuated by air from the roof of a two-story restaurant when water rose up to the second floor. Heavy rains caused widespread flooding to homes, roadways and low-lying areas from New Port Richey to Zephyrhills and Dade City in Pasco County. More than 100 homes were damaged from floodwaters, primarily in the Timber Lake Estates along Morris Bridge Road of Zephyrhills. In Hillsborough county, heavy rains caused the Little Manatee River to crest at 18.7 feet, nearly eight feet above the flood stage of eleven feet at U.S. Highway 301. Several homes along the river’s banks incurred water damage from the floodwaters. The Alafia River at Riverview crested at 17.72 feet, nearly five feet above the flood stage of 13 feet, on the 21st. Several rental homes along and near the Alafia River were damaged by floodwaters. The Hillsborough River at Hillsborough State Park crested at 12.17 feet, over two feet above the flood stage of ten feet, on the 20th, before the river receded. A few mobile homes incurred water damage during the crest of the Hillsborough River.

Acknowledgements: National Climatic Data Center Storm Events.