

Supplemental Material

Supplementary table 1: patient characteristics of subgroups regarding liver metastases and cabazitaxel treatment

Parameters	LM+ CABA+	IQR	LM- CABA+	IQR	LM+ CABA-	IQR	LM- CABA-	IQR
Number of patients	15		13		19		62	
Age	65.4	(60.7- 73.4)	71.6	(66.0- 75)	75.9	(69.3- 79.3)	71.9	(65.3- 77.6)
Gleason score	8	(8-9)	8	(7-9)	8	(7-9)	8	(7-9)
ECOG	0	(0-2)	1	(0.25-1)	1	(0-1)	1	(0-1)
PSA (ng/ml)	378.9	(128.8- 2282.0)	132.0	(13.1- 542.5)	208.4	(29.9- 561.4)	329.6	(93.4- 977.0)
ALP (U/l)	330.5	(171- 534.5)	172.0	(73.5- 250.5)	94.0	(66.0- 141.0)	185.0	(89.3- 315.8)
LDH (U/l)	484.0	(418.3- 783.8)	282.0	(218.0- 294.0)	277.0	(219.0- 396.0)	326.0	(236.0- 510.0)
Site of metastases	Total	%	Total	%	Total	%	Total	%
Bone	15	100	12	92	17	89	55	88
Lymph node	13	87	8	62	15	79	50	80
Lung	4	27	2	15	5	26	12	29
other	0	0	1	8	1	5	0	0
Previous therapy of mCRPC	Total	%	Total	%	Total	%	Total	%
Docetaxel	15	100	13	100	15	79	48	77
Abiraterone	13	87	12	92	15	79	50	80
Enzalutamide	11	73	13	100	17	89	51	82
Both (Abiraterone & Enzalutamide)	11	73	12	92	13	68	42	68
²²³ Radium	3	20	2	15	3	16	14	23
EBRT-bone	3	20	3	20	10	53	10	16

LM=liver metastases; CABA=cabazitaxel treatment; PSA=prostate-specific antigen; ALP=alkaline phosphatase; LDH=lactate dehydrogenase; EBRT=external beam radiation; IQR=interquartile range

Supplementary table 2: Survival parameters of patient subgroups regarding liver metastases and cabazitaxel treatment

Parameters	LM+ CABA+	CI (95%)	LM- CABA+	CI (95%)	LM+ CABA-	CI (95%)	LM- CABA-	CI (95%)
Number of patients	15		13		19		62	
Deaths during observation	12	80%	6	46%	14	73%	22	35%
Median OS	3.3	(1.2-5.4)	13.2	(0.8-25.6)	6.9	(4.7-9.1)	16.4	(8.2-24.7)
Median PFS								

LM=liver metastases; CABA=cabazitaxel treatment; PSA=prostate-specific antigen; ALP=alkaline phosphatase; LDH=lactate dehydrogenase; EBRT=external beam radiation; CI = confidence interval; PFS = progression free survival (PCSWG3 criteria, $\geq 25\%$ and $\geq 2\text{ng/ml}$ of nadir)

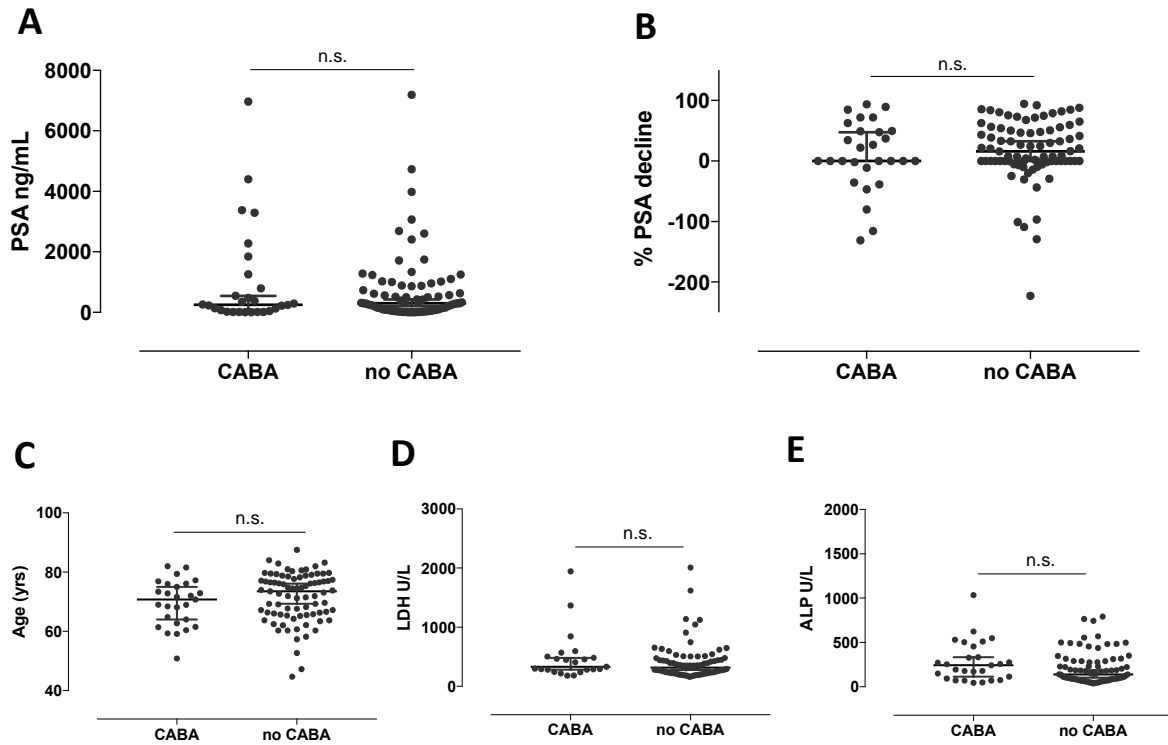


Figure S1: comparison of CABA-treated and untreated patients regarding different parameters. Dot plot comparisons are shown for PSA level (A) PSA response (B), age (C), LDH (D) and ALP (E). Both groups have been compared using a non-parametric t-test. PSA = prostate-specific antigen, LDH = lactate dehydrogenase; ALP = alkaline phosphatase; CABA = cabazitaxel; n.s. = not significant

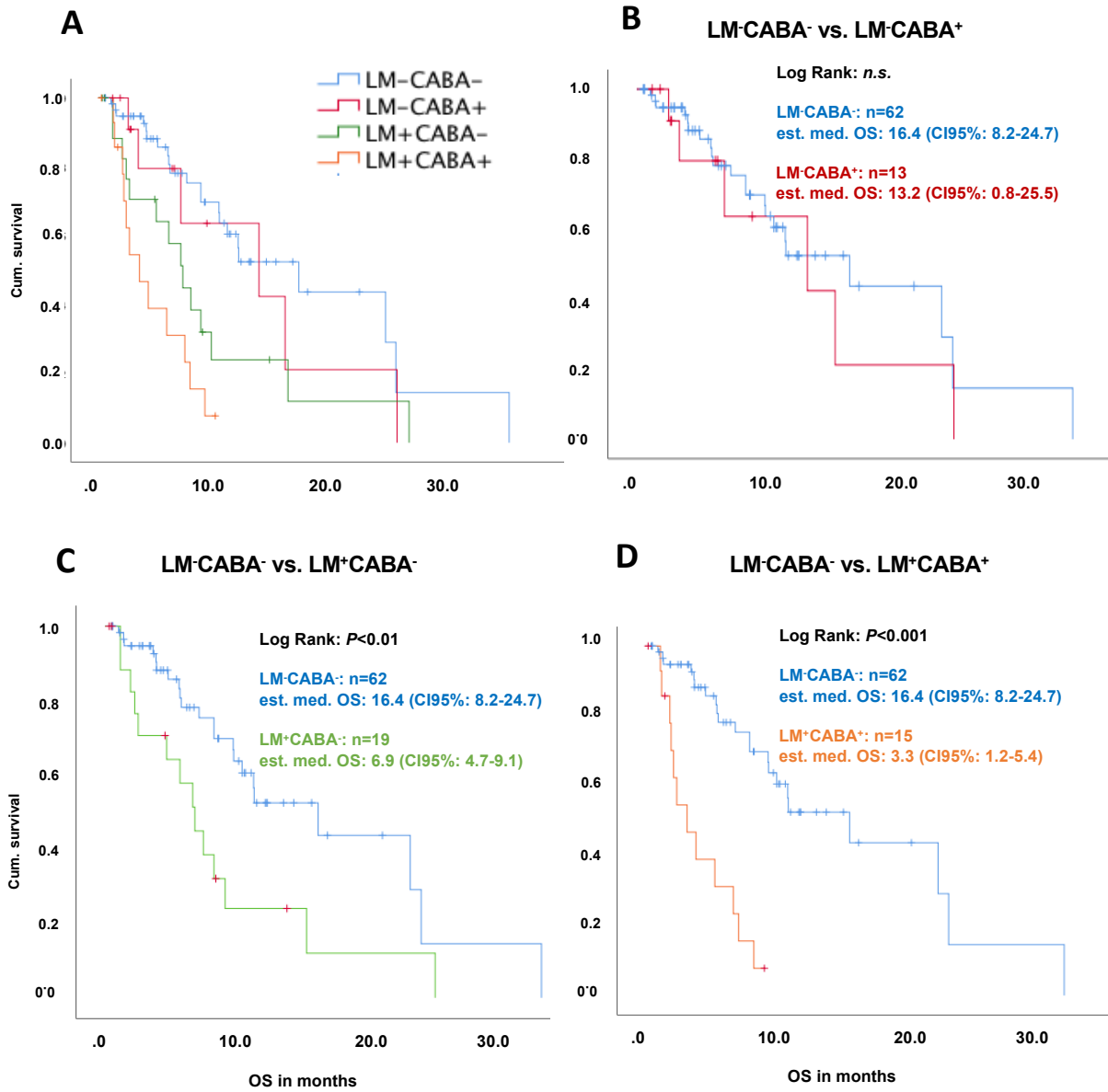


Figure S2: Kaplan-Meier survival analysis of four subgroups LM⁺CABA⁺ (n=15); LM⁻CABA⁺ (n=13), LM⁺CABA⁻ (n=19) and LM⁻CABA⁻ (n=62) (A). Individual comparisons of OS of LM⁻CABA⁺ (B), LM⁺CABA⁻ (C) and LM⁺CABA⁺ (D) with LM⁻CABA⁻. LM = liver metastases, CABA = Cabazitaxel, OS = overall survival, cum. survival = cumulative survival