

# **PSD's Contribution to the Famine Early Warning Systems Network**

Andy Hoell

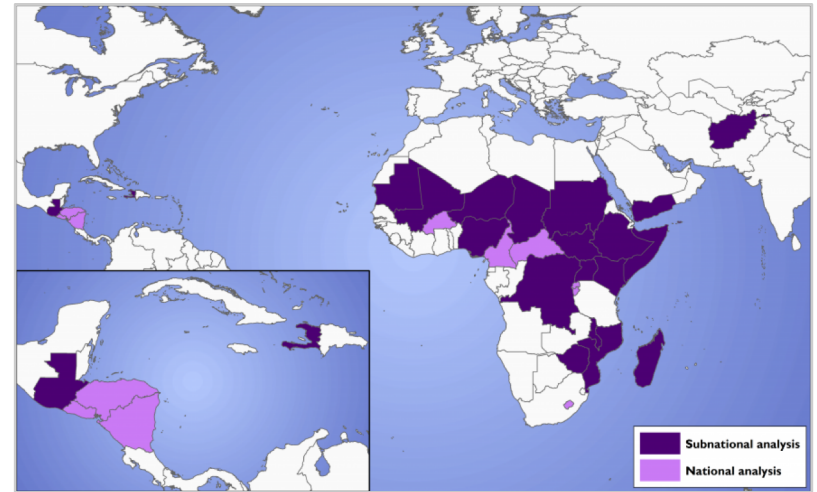
*Meteorologist*

*NOAA/ESRL Physical Sciences Division*

*Email: [andrew.hoell@noaa.gov](mailto:andrew.hoell@noaa.gov)*

# Famine Early Warning Systems Network (FEWS NET)

- Provides objective, evidence-based analyses on acute food insecurity to help government decision-makers and relief agencies plan for and respond to humanitarian crises.
- Analysts in 22 field offices work with US government science agencies, national government ministries, international agencies, and NGOs to produce forward-looking reports for the world's most food-insecure countries.



Source: <http://fews.net/about-us>

# FEWS NET Organizational Structure



## External Partners Include



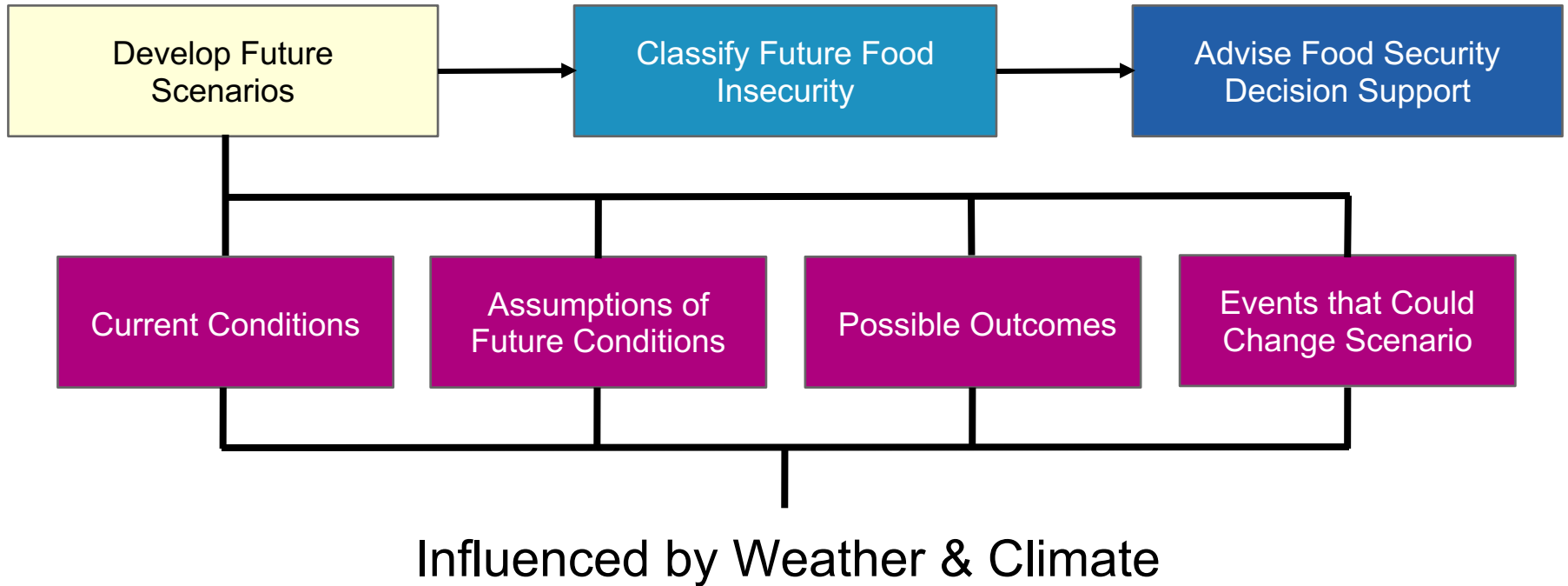
## Federal Science Partners



## Technical Management



# FEWS NET Approach: Food Security Decision Support Using Scenario Development



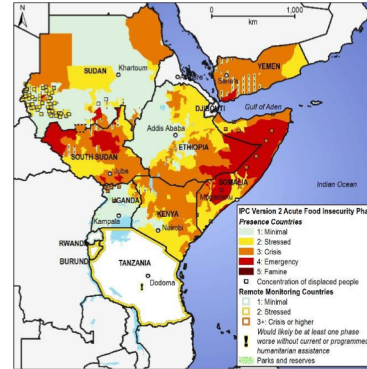
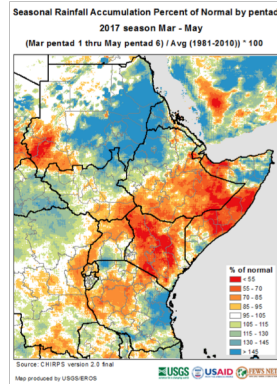
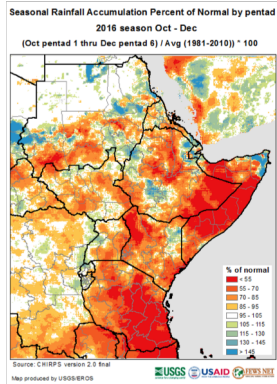
# Success: Better Food Security Outcomes w/ Similar Droughts

## Oct-Dec Rainfall

## March-May Rainfall

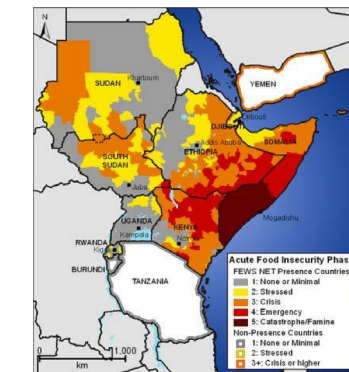
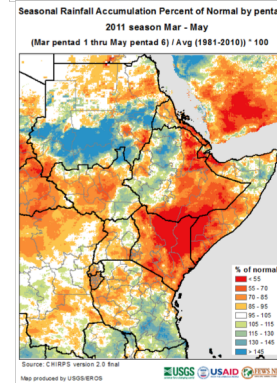
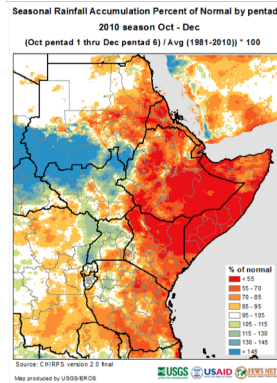
## Food Security

2017



[http://fews.net/sites/default/files/documents/reports/EA\\_OL\\_2017\\_07\\_0.pdf](http://fews.net/sites/default/files/documents/reports/EA_OL_2017_07_0.pdf)

2011



[http://fews.net/sites/default/files/documents/reports/Ea\\_st\\_Regional\\_FSOU\\_2011\\_08\\_07\\_final.pdf](http://fews.net/sites/default/files/documents/reports/Ea_st_Regional_FSOU_2011_08_07_final.pdf)

# PSD's Role in FEWS NET Scenario Development: Guiding Assumptions of Future Weather & Climate



## June 2018 FEWS NET Seasonal Forecast Review

Overview of the Seasonal Forecast  
Review Technical Discussion

Prepared by Andy Hoell  
andrew.hoell@noaa.gov

# PSD's Role in FEWS NET Scenario Development: Building a Predictive Understanding of Weather/Climate

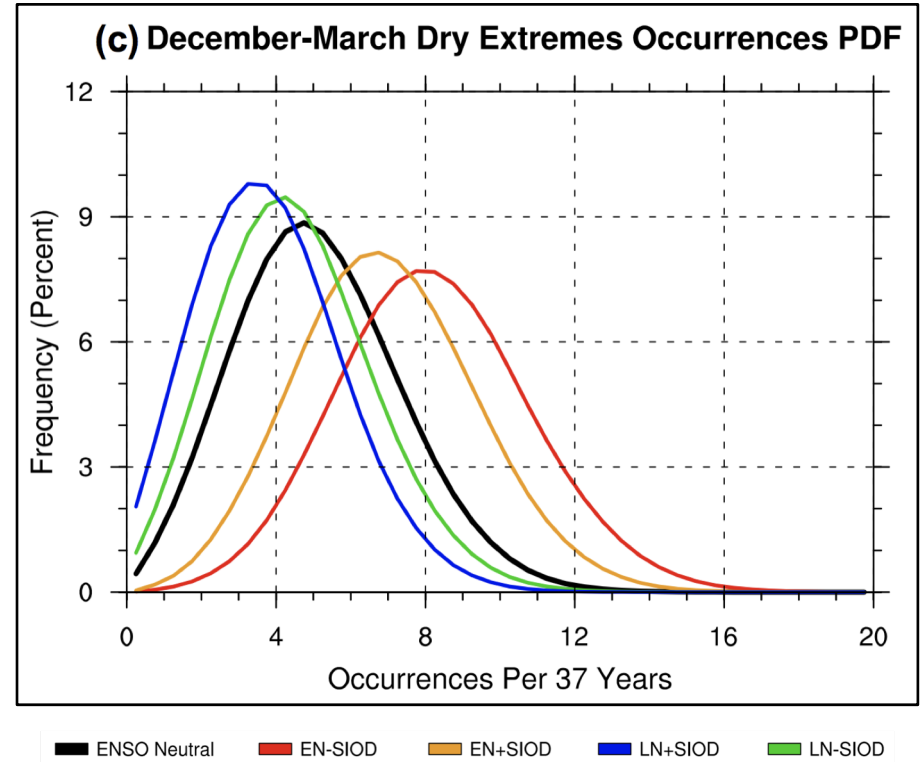
Clim Dyn (2018) 50:3219–3236  
DOI 10.1007/s00382-017-3801-z



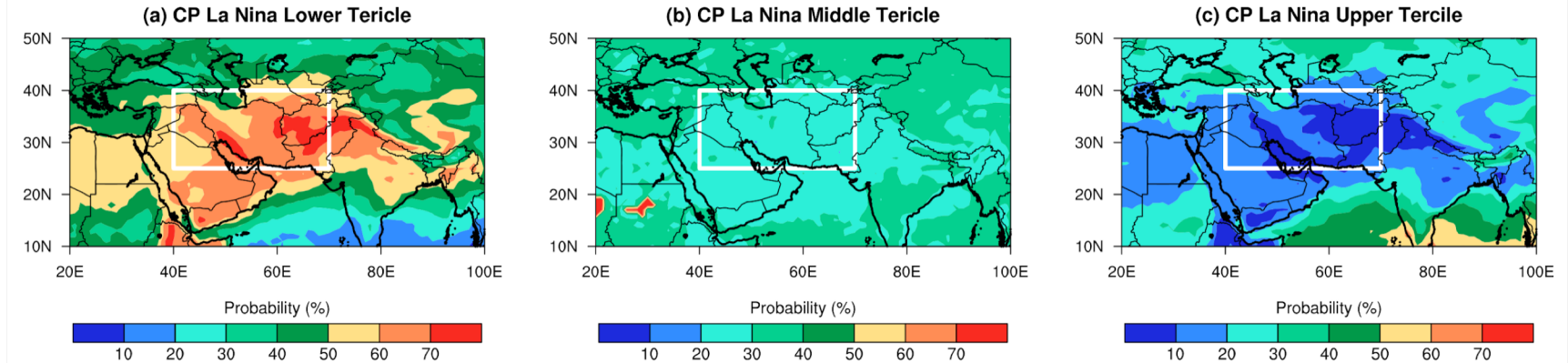
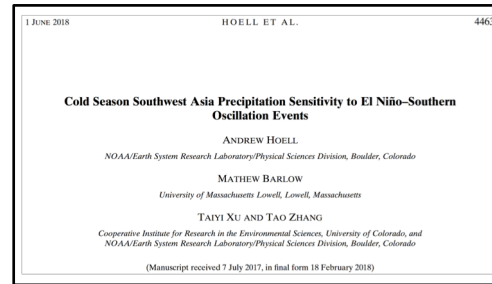
**Austral summer Southern Africa precipitation extremes forced by the El Niño-Southern oscillation and the subtropical Indian Ocean dipole**

Andrew Hoell<sup>1</sup> · Linyin Cheng<sup>1,2</sup>

Received: 5 March 2017 / Accepted: 6 July 2017 / Published online: 22 July 2017  
© Springer-Verlag Berlin Heidelberg (outside the USA) 2017



# PSD's Role in FEWS NET Scenario Development: Building a Predictive Understanding of Weather/Climate





# PSD's Role in FEWS NET Scenario Development: Building a Predictive Understanding of Weather/Climate

A few events, usually during March and April, determine the annual water resources. We need to understand the nature of those events and when they can be predicted.

