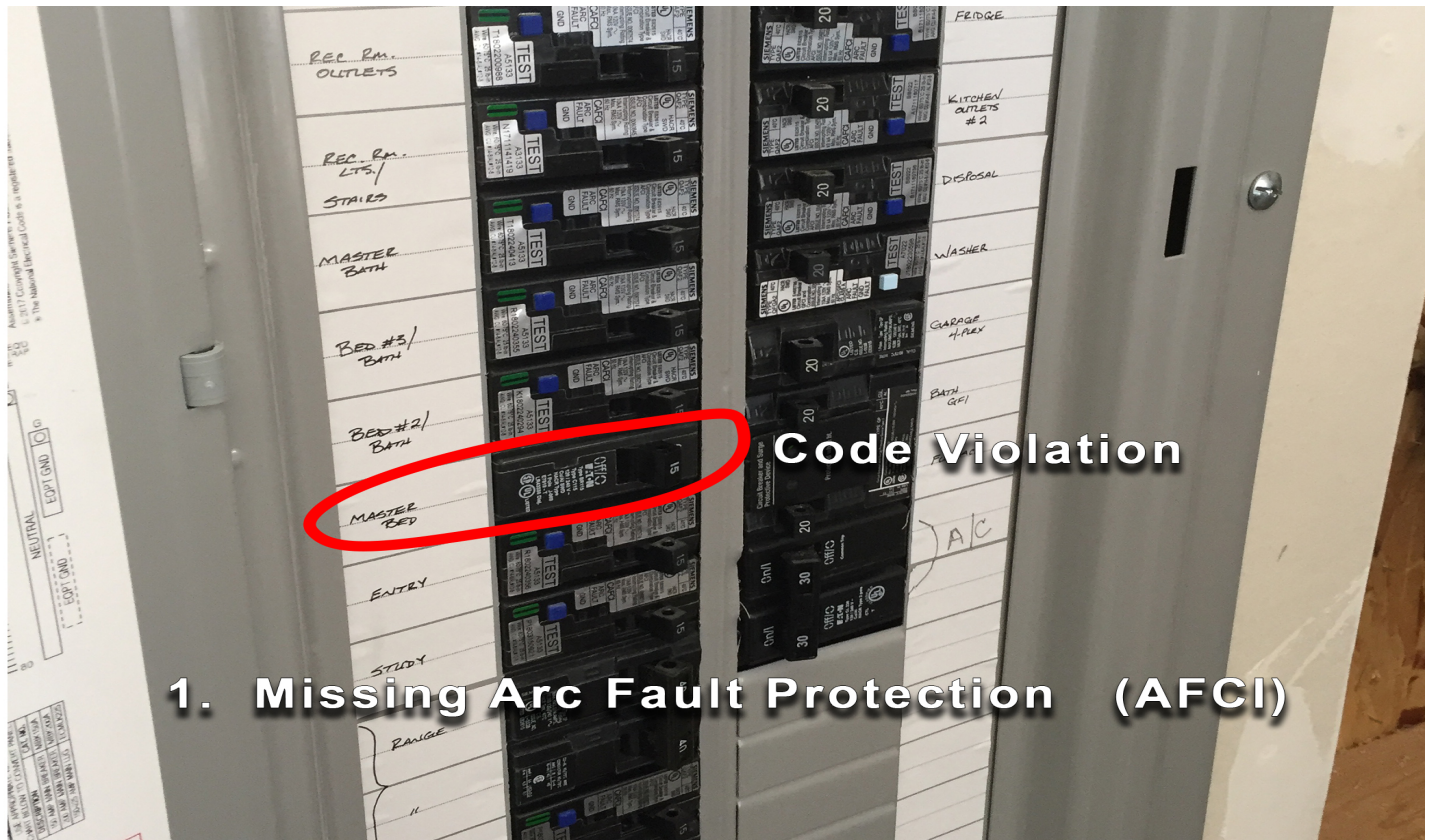




Top 5 Common Contractor Electrical Mistakes

- 1) Missing Arc Fault Protection. (AFCI) This is required for all outlets and devices on 15 and 20 amp 120 volt circuits, installed in a home excluding bathrooms and unfinished areas.
- 2) Incorrect sizing of Over Current Protection Devices (OCPD) on A/C's (breakers or fuses) This is not only against the electrical code, but it often leads to nuisance tripping or breakers that don't trip when needed which puts the condenser at risk.
- 3) Too much clutter in front of electrical equipment. This is not only a dangerous fire hazard, but a common reason inspections get rejected. You must have clear working space in front of electrical equipment.
- 4) Work in the field not matching the electrical plans. If a change needs to be made, a splice is required.
- 5) Misinterpretation of article 250 of the national electrical code. This can lead to some hazardous conditions when it comes to the installation of commercial services.



1. Missing Arc Fault Protection (AFCI)



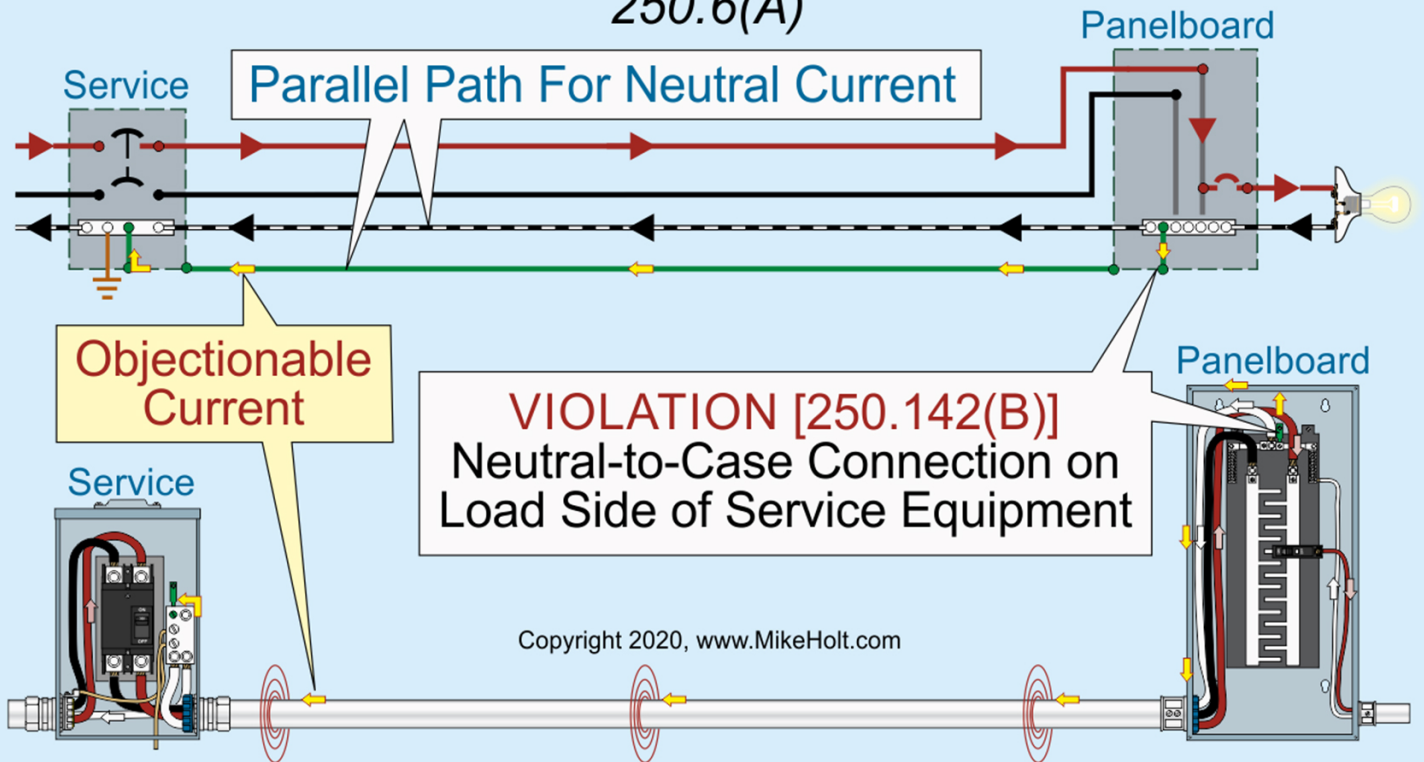
2. Incorrect sizing of Over Current Protection Devices (OCPD) on A/C installs



Pikes Peak
REGIONAL
Building Department
2880 International Circle Colorado Springs, Colorado 80910



Objectionable Current, Improper Neutral Connection 250.6(A)



Objectionable neutral current will flow on metal parts and the equipment grounding conductor when the neutral conductor is connected to the metal case of a panelboard on the load side of service equipment.

5. Misinterpretation of article 250 of the National Electrical Code