

**-SUPPORTING INFORMATION-****A Pegylated Flavin Adenine Dinucleotide PEG Complex to Boost  
Immunogenic and Therapeutic Effects in a Liver Cancer Model**

Celia Arib<sup>1‡</sup>, Hui Liu<sup>2‡</sup>, Qiqian Liu<sup>1</sup>, Anne-Marie Cieutat<sup>1</sup>, Didier Paleni<sup>3</sup>, Xiaowu Li<sup>2\*</sup>,

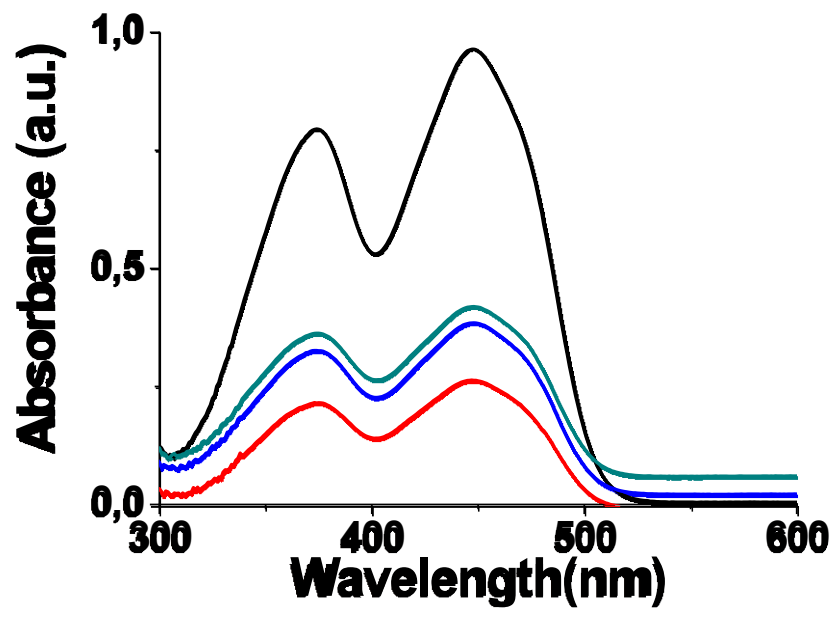
Jolanda Spadavecchia<sup>1-2\*</sup>

<sup>1</sup> *CNRS, UMR 7244, NBD-CSPBAT, Laboratoire de Chimie, Structures et Propriétés de Biomatériaux et d'Agents Thérapeutiques Université Paris 13, Sorbonne Paris Nord, Bobigny, France*

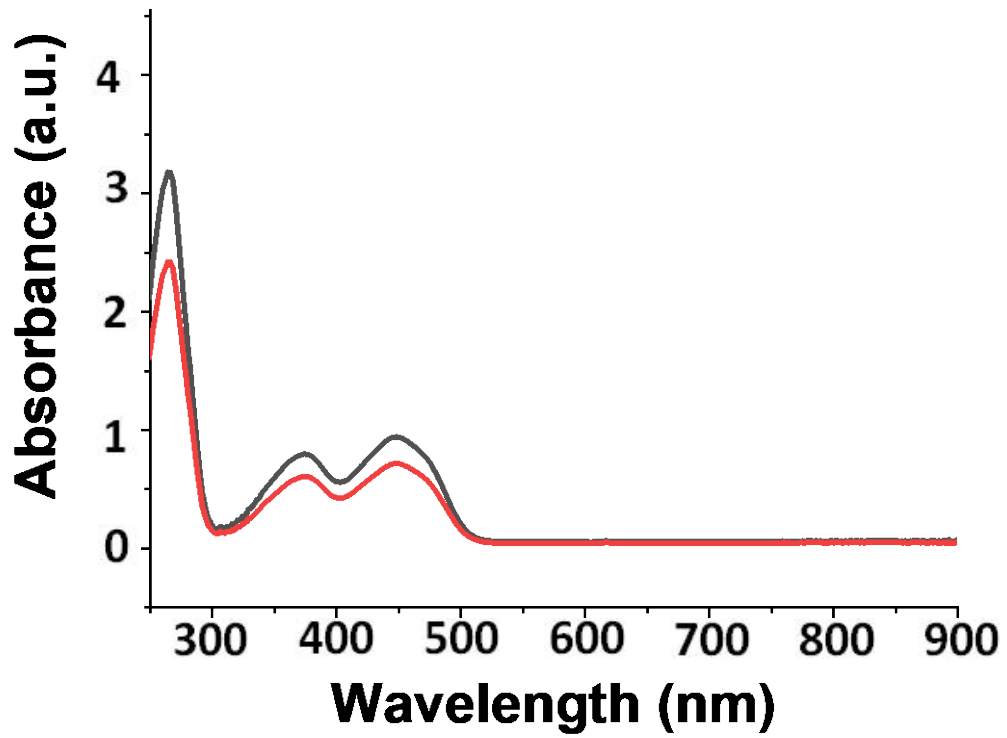
<sup>2</sup> *Department of Hepatobiliary Surgery, Guangdong Provincial Key Laboratory of Regional Immunity and Diseases & Carson International Cancer Center, Shenzhen University General Hospital & Shenzhen University Clinical Medical Academy Center, Shenzhen University, Shenzhen, China*

<sup>3</sup> *BioEVEN start-up, 75 rue de Lourmel 75015 Paris*

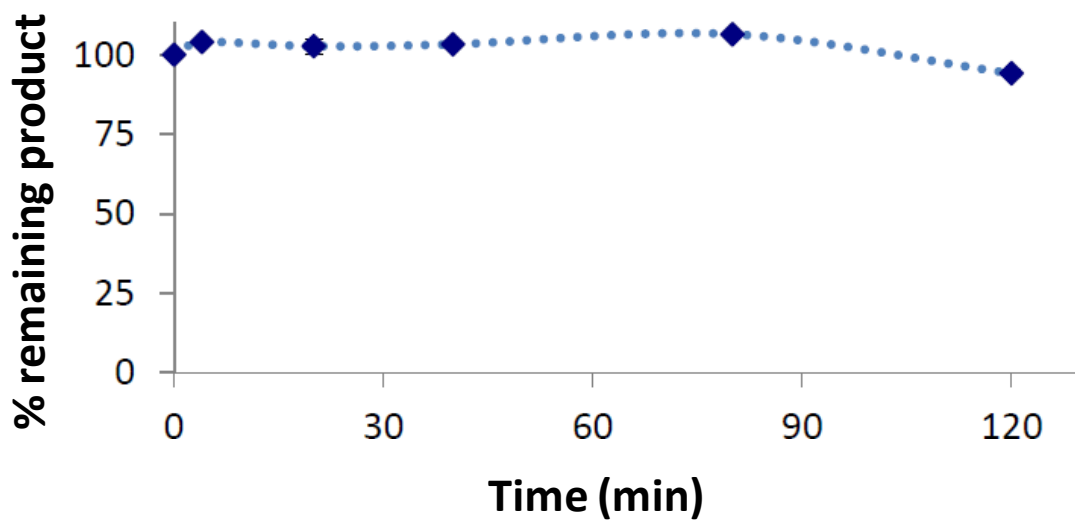
**Corresponding Author\*:** [lixw1966@163.com](mailto:lixw1966@163.com); [jolanda.spadavecchia@univ-paris13.fr](mailto:jolanda.spadavecchia@univ-paris13.fr)



**Figure S1:** UV-Vis absorption spectra of (A) FAD at increasing known concentrations.

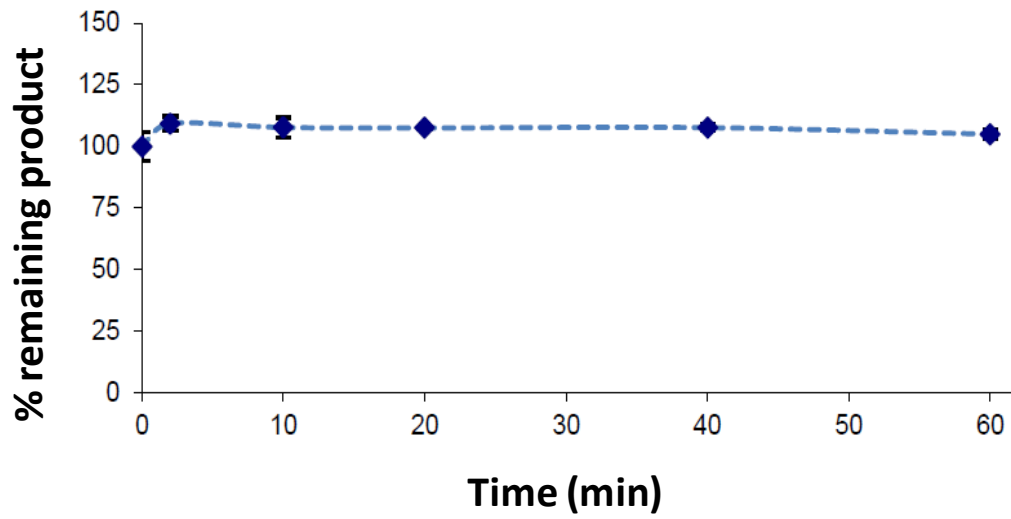


**Figure S2.** Stability of FAD PEG-Diacide (NP2) before (black line) and after (red line) incubation in DMEM(72h).

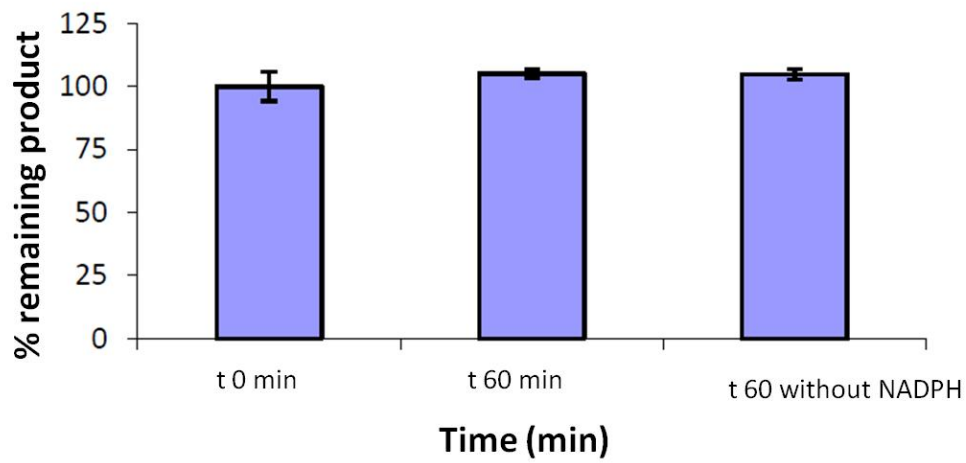


**Figure S3.** Stability of NP2 in plasma of mice during 120 min at 37°C (PBS, pH 7).

A)

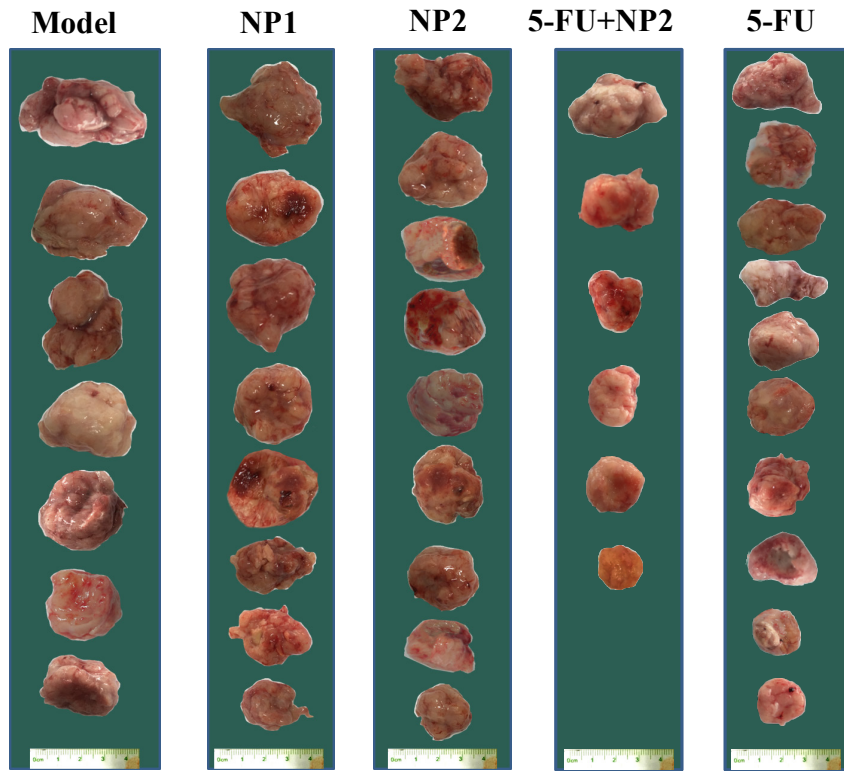


B)

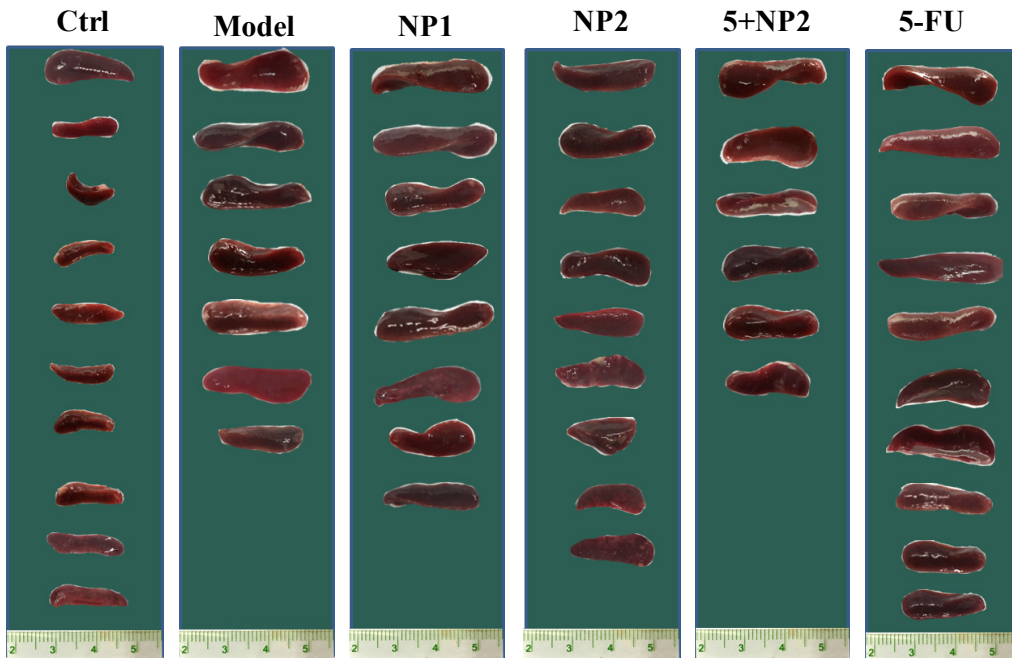


**Figure S4.**A) Stability of NP2 in microsomes of liver mouse during 1h at 37°C (PBS, pH 7.4) in presence of NADPH cofactor (B).

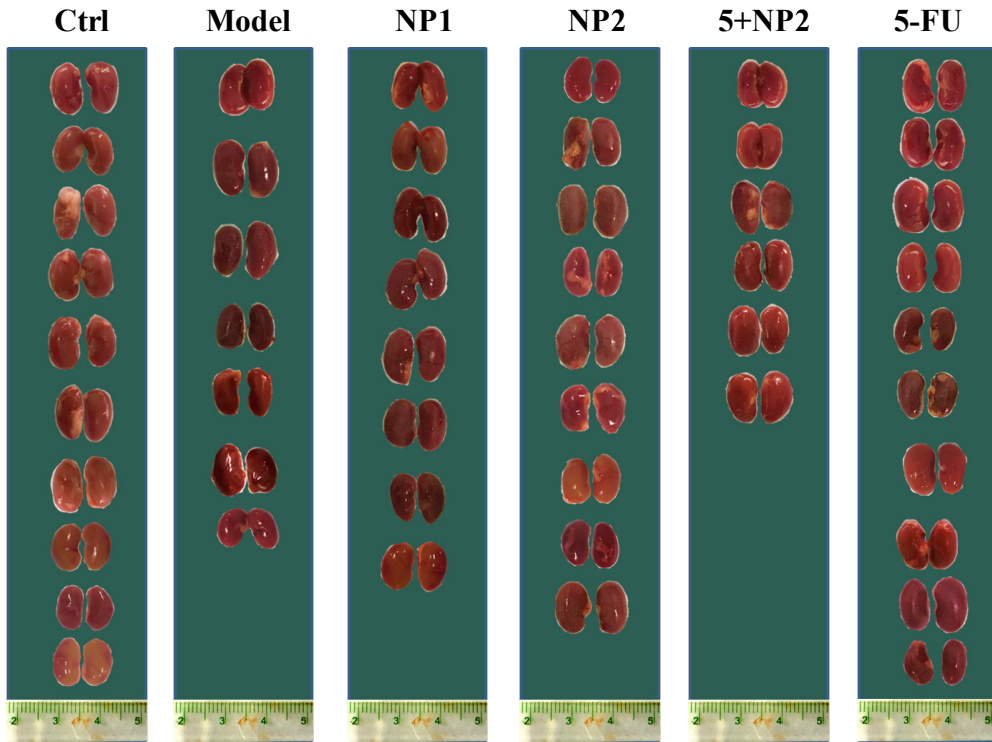
A)



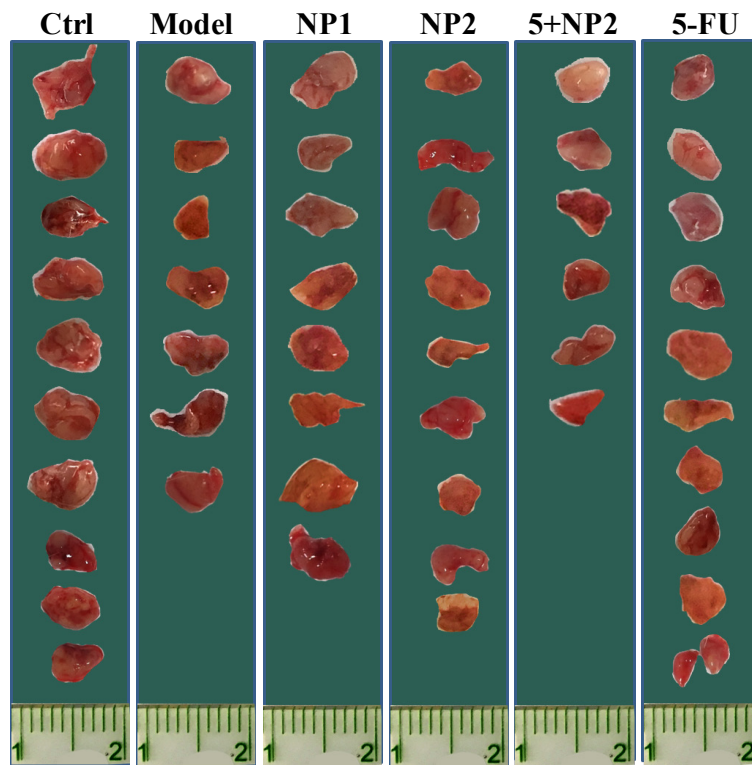
B)



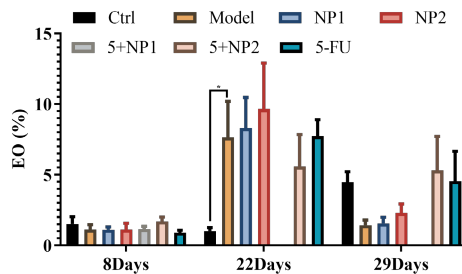
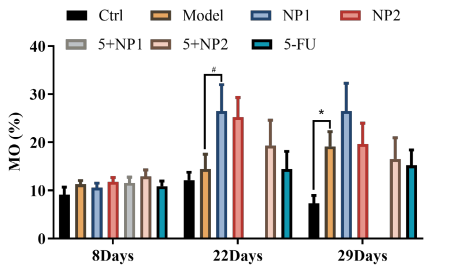
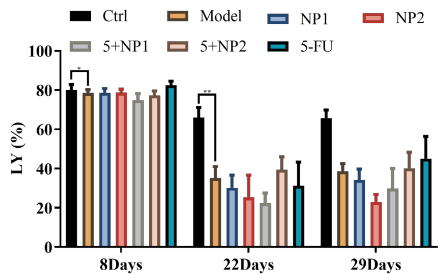
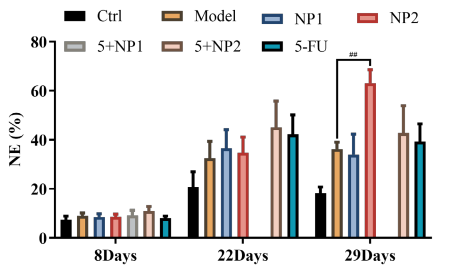
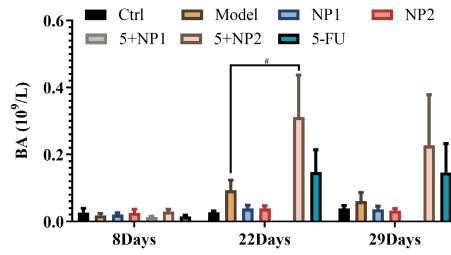
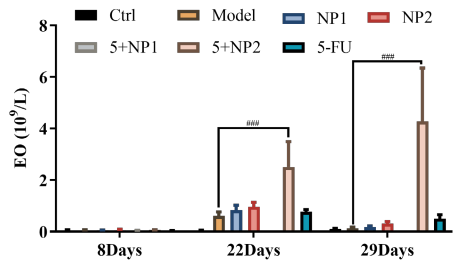
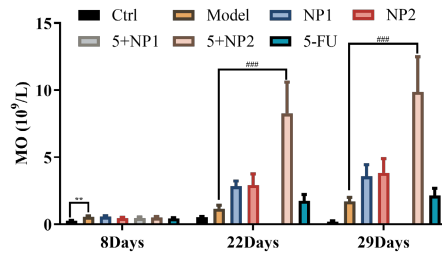
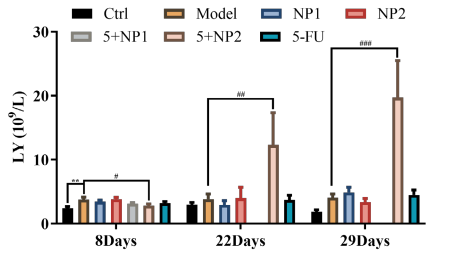
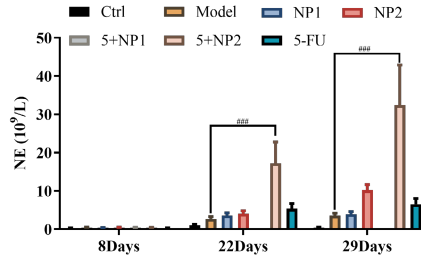
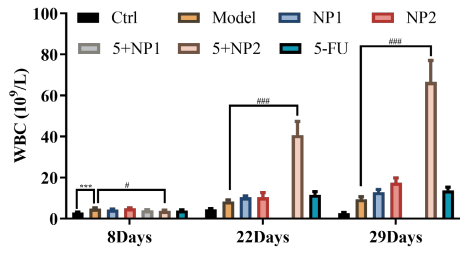
C)

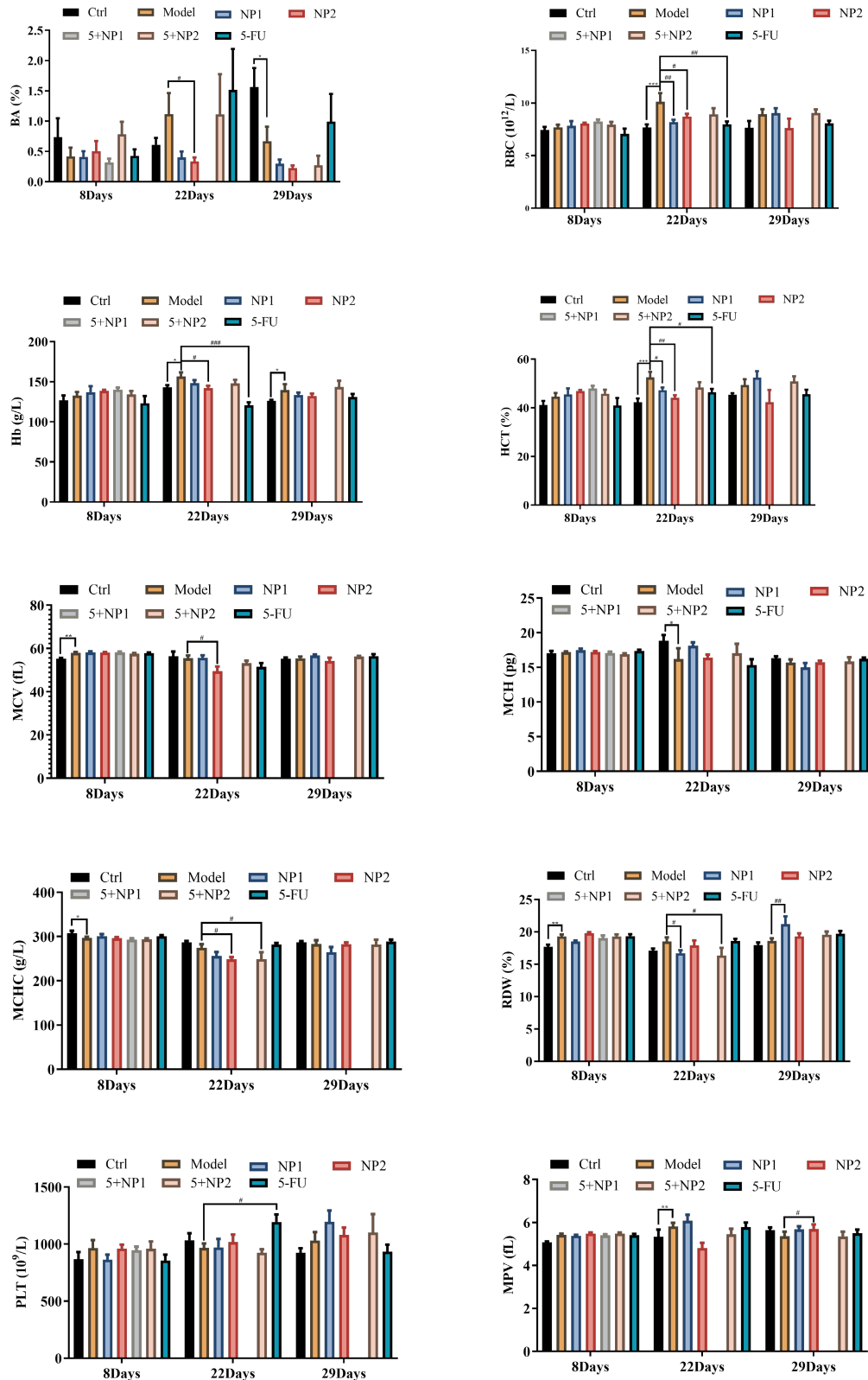


D)



**Figure S5 :** Morphology of the tumor (A) and spleen tissues (B) kidney (C) and thymus (D) of each group taken out from the sacrificed mice at the study end point.





**Figure S6.** Effect of NP1 and NP2 on blood cell in liver mice with HEP1-6 cells injection Values wereshown as Mean $\pm$ SEM. \* $p$ <0.05, \*\* $p$ <0.01 and \*\*\* $p$ <0.001 vs sham group ; # $p$ <0.05, ## $p$ <0.01 and### $p$ <0.001 vs model group.