



OPEN

Onasemnogene abeparvovec for presymptomatic infants with two copies of *SMN2* at risk for spinal muscular atrophy type 1: the Phase III SPR1NT trial

Kevin A. Strauss^{1,2,3}✉, Michelle A. Farrar^{4,5}, Francesco Muntoni^{6,7}, Kayoko Saito⁸, Jerry R. Mendell^{9,10}, Laurent Servais^{11,12}, Hugh J. McMillan¹³, Richard S. Finkel^{14,15}, Kathryn J. Swoboda¹⁶, Jennifer M. Kwon¹⁷, Craig M. Zaidman¹⁸, Claudia A. Chiriboga¹⁹, Susan T. Iannaccone²⁰, Jena M. Krueger²¹, Julie A. Parsons²², Perry B. Shieh²³, Sarah Kavanagh²⁴, Sitra Tauscher-Wisniewski²⁴, Bryan E. McGill²⁵ and Thomas A. Macek²⁴

SPR1NT (NCT03505099) was a Phase III, multicenter, single-arm study to investigate the efficacy and safety of onasemnogene abeparvovec for presymptomatic children with biallelic *SMN1* mutations treated at ≤ 6 weeks of life. Here, we report final results for 14 children with two copies of *SMN2*, expected to develop spinal muscular atrophy (SMA) type 1. Efficacy was compared with a matched Pediatric Neuromuscular Clinical Research natural-history cohort ($n = 23$). All 14 enrolled infants sat independently for ≥ 30 seconds at any visit ≤ 18 months (Bayley-III item #26; $P < 0.001$; 11 within the normal developmental window). All survived without permanent ventilation at 14 months as per protocol; 13 maintained body weight (≥ 3 rd WHO percentile) through 18 months. No child used nutritional or respiratory support. No serious adverse events were considered related to treatment by the investigator. Onasemnogene abeparvovec was effective and well-tolerated for children expected to develop SMA type 1, highlighting the urgency for universal newborn screening.

Spinal muscular atrophy (SMA) results from biallelic deletions or mutations of *SMN1*, which encodes the survival motor neuron (SMN) protein essential for the development and viability of motor neurons in the ventral spinal cord¹. *SMN2*, a gene homologous to *SMN1*, produces minimal SMN protein and exists in multiple copies in humans². *SMN2* copy number correlates with the onset and severity of SMA³. Two copies are 79% predictive of severe, infantile-onset SMA type 1, three copies are 54% predictive of intermediate severity SMA type 2, and four copies are 88% predictive of a milder SMA type 3 phenotype with later onset³.

The classic clinical presentation of untreated SMA type 1 is characterized by onset of flaccid weakness and motor regression within the first 6 months of life, followed by progressive muscle wasting, dysphagia, respiratory failure, and untimely death^{4–7}. Two prospective

observational studies (Pediatric Neuromuscular Clinical Research [PNCR] and NeuroNEXT)^{7,8} charted the natural course of SMA type 1 and delineated meaningful trial endpoints, including survival. Untreated children do not achieve or maintain a Children's Hospital of Philadelphia Infant Test of Neuromuscular Disorders (CHOP INTEND; range of 0–64, with lower scores indicating reduced motor function) score of ≥ 40 after age 6 months, and none achieve independent sitting or more advanced motor milestones. Median ventilator-free survival of patients with SMA type 1 (two *SMN2* copies) is between 8 months (NeuroNEXT) and 10.5 months (PNCR); most children who survive to 18 months require non-oral feeding support, and 100% die or require permanent ventilation by 2 years of age. Untreated patients with SMA type 2 sit independently but do not walk, whereas untreated patients with SMA type 3 develop independent walking.

¹Clinic for Special Children, Strasburg, PA, USA. ²Penn Medicine-Lancaster General Hospital, Lancaster, PA, USA. ³Departments of Pediatrics and Molecular, Cell & Cancer Biology, University of Massachusetts School of Medicine, Worcester, MA, USA. ⁴Department of Neurology, Sydney Children's Hospital Network, Sydney, New South Wales, Australia. ⁵School of Clinical Medicine, UNSW Medicine and Health, UNSW Sydney, Sydney, New South Wales, Australia. ⁶The Dubowitz Neuromuscular Centre, University College London, Great Ormond Street Institute of Child Health & Great Ormond Street Hospital, London, UK. ⁷National Institute of Health Research, Great Ormond Street Hospital Biomedical Research Centre, London, UK. ⁸Institute of Medical Genetics, Tokyo Women's Medical University, Tokyo, Japan. ⁹Center for Gene Therapy, Nationwide Children's Hospital, Columbus, OH, USA. ¹⁰Department of Pediatrics and Department of Neurology, The Ohio State University, Columbus, OH, USA. ¹¹Department of Paediatrics, MDUK Oxford Neuromuscular Centre, Oxford, UK. ¹²Neuromuscular Reference Center, Department of Pediatrics, CHU & University of Liège, Liège, Belgium. ¹³Departments of Pediatrics, Neurology & Neurosurgery, Montreal Children's Hospital, McGill University Health Centre, Montreal, Quebec, Canada. ¹⁴Department of Pediatrics, Nemours Children's Hospital, Orlando, FL, USA. ¹⁵Center for Experimental Neurotherapeutics, St. Jude Children's Research Hospital, Memphis, TN, USA. ¹⁶Department of Neurology, Massachusetts General Hospital, Boston, MA, USA. ¹⁷Department of Neurology, University of Wisconsin School of Medicine and Public Health, Madison, WI, USA. ¹⁸Washington University School of Medicine, St. Louis, MO, USA. ¹⁹Division of Pediatric Neurology, Columbia University Medical Center, New York, NY, USA. ²⁰Department of Pediatrics, University of Texas Southwestern Medical Center, Dallas, TX, USA. ²¹Department of Neurology, Helen DeVos Children's Hospital, Grand Rapids, MI, USA. ²²Department of Pediatrics, University of Colorado School of Medicine, Aurora, CO, USA. ²³Department of Neurology, David Geffen School of Medicine at UCLA, Los Angeles, CA, USA. ²⁴Novartis Gene Therapies, Inc., Bannockburn, IL, USA. ²⁵Translational Medicine, Novartis Institutes for BioMedical Research, Cambridge, MA, USA. ✉e-mail: kstrauss@clinicforspecialchildren.org

There are now three approved therapies for SMA. Two augment production of intact SMN protein from each *SMN2* copy⁹ but require repeated intrathecal (nusinersen) or oral (risdiplam) dosing. Onasemnogene abeparvovec is a genetically engineered adeno-associated virus type 9 (AAV9) vector designed to express SMN protein in tissues following one-time intravenous infusion¹⁰. Intravenous onasemnogene abeparvovec traverses the blood–brain barrier to transfect neurons and glia throughout the nervous system, and also transfects muscle, liver, and other peripheral tissues^{11,12}. Onasemnogene abeparvovec is a recombinant self-complementary AAV9 containing a human *SMN* transgene under the control of a chicken β -actin promoter and cytomegalovirus enhancer, which together ensure rapid and sustained transcription of *SMN* messenger RNA.

In two Phase III clinical trials of one-time intravenous onasemnogene abeparvovec infusion, patients with symptomatic SMA type 1 who were younger than 6 months of age were treated with 1.1×10^{14} vector genomes (vg)/kg (STRIVE-US, $n=22$; STRIVE-EU, $n=33$)^{13,14}. Both studies provide evidence that *SMN* gene replacement via intravenous onasemnogene abeparvovec improves survival and motor development for patients with SMA type 1. At age 14 months, 91% (STRIVE-US) and 97% (STRIVE-EU) of treated patients were alive and free from permanent ventilation, as compared with 26% in the historical PNCr cohort. Rapid and sustained improvements in motor function were observed in both trials: (1) CHOP INTEND scores reached or exceeded 40 for 21 (95%) patients in STRIVE-US and 24 (73%) in STRIVE-EU; (2) many patients sat independently by 18 months of age (14 of 22 (64%) for ≥ 30 seconds (Bayley #26) in STRIVE-US and 14 of 32 (44%) for ≥ 10 seconds (World Health Organization; WHO) in STRIVE-EU); and (3) one patient from each study walked independently for at least five steps by 18 months of age (5%, STRIVE-US and 3%, STRIVE-EU [Bayley #43]). Similar motor milestone gains have been replicated in patients treated with intravenous onasemnogene abeparvovec in real-world settings¹⁵ (unpublished data, Servais, L., Day, J.W., De Vivo, D.C., Mercuri, E. & Muntoni, F).

A recent analysis summarized onasemnogene abeparvovec safety data from seven clinical trials ($n=102$) as well as post-marketing reports ($n=665$) through 12 November 2020¹⁶. In clinical trials, liver transaminases exceeded transiently in 90 of 102 (90%) patients and, in some cases, exceeded three times the upper limit of normal (ULN) (9% mild $\geq 3 \times$ ULN to $< 5 \times$ ULN; 6% $\geq 5 \times$ to $< 20 \times$ ULN; and 5% $\geq 20 \times$ ULN)¹⁷. Hepatotoxicity events resolved over time with prednisolone treatment. Transient decreases in platelets ($< 75,000$ cells/ μ L) were also observed after vector administration¹⁶. In the post-marketing setting, transient hepatotoxicity, including four cases of acute liver failure, was the most common adverse event (AE). In addition, thrombotic microangiopathy (TMA) was observed in the post-marketing setting¹⁶. Although not observed clinically, cardiac thrombi and dorsal root ganglia toxicities were observed in nonclinical toxicology studies¹⁶. From these data, the study sponsor (Novartis Gene Therapies) identified five categories of potential AEs of special interest (AESIs), which include hepatotoxicity, thrombocytopenia, cardiac events, TMA, and sensory abnormalities suggestive of ganglionopathy. Overall, onasemnogene abeparvovec has demonstrated a favorable benefit–risk profile for patients with SMA who are younger than 2 years of age^{13,14,18–20}. However, data covering its administration during the presymptomatic neonatal period have not been systematically collected or reported until now.

The objective of SPRINT was to evaluate the efficacy and safety of onasemnogene abeparvovec for children with genetically confirmed SMA prior to clinical disease onset, based on the hypothesis that earlier administration of *SMN* gene therapy results in better outcomes²¹. Data from Phase I START^{18,19} and Phase III STRIVE^{13,14} studies provide some support for this hypothesis. Infants in START with baseline CHOP INTEND scores greater than 20 who received

Table 1 | Demographics and baseline clinical characteristics (ITT population)

Baseline characteristics	All patients ($n=14$)
Age at dosing, days ^a	
Mean (s.d.)	20.6 (7.9)
Median (range)	21.0 (8–34)
Gestational age at birth, weeks	
Mean (s.d.)	38.2 (1.4)
Median (range)	38.0 (36–41)
Weight at baseline, kg	
Mean (s.d.)	3.6 (0.39)
Median (range)	3.7 (3.0–4.3)
Sex, n (%)	
Male	4 (29)
Female	10 (71)
Race, n (%)	
White	7 (50)
Other	4 (29)
Asian	2 (14)
Black or African American	1 (7)
American Indian or Alaska Native	0
Native Hawaiian or other Pacific Islander	0
Ethnicity, n (%)	
Not Hispanic or Latino	10 (71)
Hispanic or Latino	4 (29)
Modality of SMA diagnosis, n (%)	
Prenatal testing	5 (36)
Newborn screening	9 (64)
c.859G>C <i>SMN2</i> gene modifier variant	0
Age at SMA diagnosis, days ^b	
n (number of patients diagnosed after birth)	9
Mean (s.d.)	7.2 (4.8)
Median (range)	8.0 (1–14)

ITT, intention-to-treat; s.d., standard deviation; SMA, spinal muscular atrophy; *SMN2*, survival motor neuron 2 gene. ^aAge at dosing = (dose date – date of birth + 1). ^bAge at SMA diagnosis = (SMA diagnosis date – date of birth + 1). Only calculated for patients who were diagnosed after birth.

gene therapy before 3 months of age were the earliest to sit independently, and two patients who achieved independent walking were treated prior to age 3 months and had a baseline CHOP INTEND score > 40 ^{18,22}. Similarly, greater efficacy of other SMA disease-modifying treatments has been observed when administered earlier in the course of the disease^{23,24}. For example, presymptomatic infants treated with nusinersen in NURTURE achieved greater clinical improvement compared with symptomatic patients, as demonstrated by changes in Hammersmith Infant Neurological Examination Section 2 (HINE-2) and CHOP INTEND scores²³.

SPRINT enrolled infants with a genetic diagnosis of SMA, two or three copies of *SMN2*, and no clinical evidence of neuromuscular disease. The trial focused on clinically meaningful measures of efficacy, such as motor milestones compared with normal developmental benchmarks²⁵ and the ability to survive and thrive without mechanical interventions, as they compared with a matched PNCr natural-history cohort⁷. Here, we report final efficacy and safety outcomes for children with two *SMN2* copies (hereafter referred to

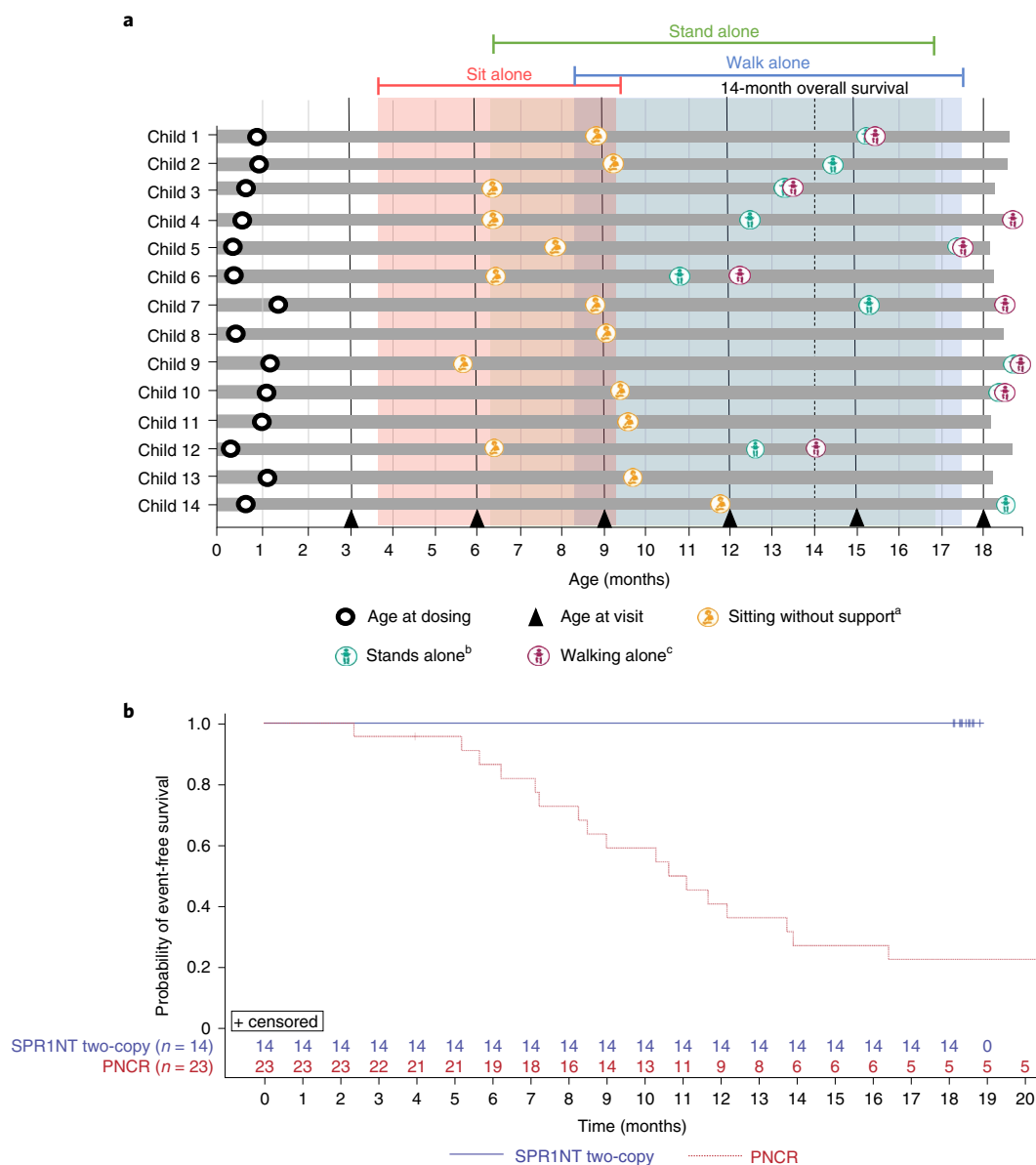


Fig. 1 | Survival and achieved video-confirmed developmental motor milestones. a, Milestones achieved (visit month identified). Months calculated as days/30. Only the first observed instance of a milestone is included in this figure. ^aBayley Scales gross motor subtest item #26: child sits alone without support for at least 30 seconds. ^bBayley Scales gross motor subtest item #40: child stands alone. Child stands alone for at least 3 seconds after you release his or her hands. ^cBayley Scales gross motor subtest item #43: child walks alone. Child takes at least five steps independently, displaying coordination and balance. According to the WHO-MGRS windows for normal development, the 99th percentile (that is, upper bound of normal development) of sitting and walking without support was 279 days and 534 days, respectively. **b**, Kaplan–Meier plot for event-free survival in the SPR1NT two-copy (blue line) and PNCr (red line) cohorts. *n* = 4 males and *n* = 10 females; mean (s.d.) age at dosing, 20.6 (7.9) days.

as the two-copy cohort). Fifteen children with three copies of *SMN2* (three-copy cohort) are the focus of a companion manuscript in this journal²⁶. SPR1NT provides important new safety data about *SMN* gene therapy in neonates that, coupled with efficacy results from both the two-copy and three-copy cohorts, has critical implications for newborn-screening programs and the timing of therapeutic intervention.

Results

Screening and demographics. Forty-four newborns were screened for the SPR1NT study, and 14 in total were excluded (Supplementary Table 1). The most common reasons for exclusion were clinical signs of SMA at screening (*n* = 4), baseline peroneal nerve to tibialis anterior compound muscle action potential (CMAP) less

than 2 mV (*n* = 4), and elevated anti-AAV9 titers (*n* = 2). Fourteen presymptomatic infants with genetically confirmed SMA and two *SMN2* copies (71% female) were enrolled and treated with onasemnogene aberparovovec (Supplementary Fig. 1). The first patient was enrolled on 2 April 2018, and the last patient completed the study on 4 December 2020.

Children in the two-copy cohort were born between 36 and 41 (median 38) gestational weeks, with a median weight of 3.3 kg (range, 2.72–4.35 kg) (Table 1). Eleven children were born prior to a gestational age at birth of <40 weeks (less than full-term gestation), and one patient had a gestational age of <37 weeks. All 14 children had biallelic *SMN1* deletions and two *SMN2* copies (no c.859C>G modifier variants), detected presymptotically through either prenatal screening (*n* = 5, 36%) or newborn screening (*n* = 9, 64%).

The nine children referred through newborn screening had a confirmed molecular diagnosis at a median age of 8 days (range, 1–14 days). At baseline, CHOP INTEND scores were between 28 and 57 (median 49), median peroneal CMAP was 3.9 mV (range, 2.1, 6.1 mV), and all children could swallow and breathe normally.

All 14 infants enrolled in the two-copy cohort received the entire onasemnogene abeparvovec infusion without interruption at median age 21 days of life (range, 8–34 days). All completed the study and were included in the intention-to-treat (ITT) population.

Primary endpoint and other motor milestones. All 14 (100%, 97.5% confidence interval (CI): 77–100%) children in the ITT population achieved the primary endpoint of independent sitting for at least 30 seconds at any visit up to 18 months of age (Fig. 1a), compared with none of 23 untreated patients with SMA type 1 in the PNCR cohort ($P < 0.0001$). Children in the two-copy cohort first sat independently at a median age of 265 days (range, 172–354 days), and 11 of 14 (79%) achieved this motor milestone within the World Health Organization (WHO) normal developmental time window of ≤ 279 days of age. Of 12 children assessed for independent sitting at the end of study, all 12 (100%) retained this motor milestone at 18 months of age. The remaining two patients could not be assessed.

All 14 (100%) children achieved motor milestones as defined by both the Bayley-III Scales of Infant and Toddler Development (BSID) and the WHO Multicentre Growth Reference Study (WHO-MGRS) that were video-confirmed by an independent observer (Supplementary Tables 2 and 3). According to the BSID definition, 11 of 14 (79%) children stood alone (seven (50%) within the normal developmental window of ≤ 514 days).

The WHO-MGRS and BSID use slightly different criteria to describe independent walking. The WHO-MGRS defines independent walking as the ability to take five or more steps in an upright position, back straight, with one leg moving forward while the other supports most of the body weight, without contacting a person or object. BSID criteria define independent walking as the ability to take at least five steps independently, displaying coordination and balance. Nine of 14 (64%) children walked independently by BSID criteria at a median age of 526 days (range, 367–564 days), and 5 (36%) did so within the normal developmental window of ≤ 534 days. Ten of 14 children (71%) walked alone, as defined by WHO-MGRS criteria, at a median age of 493 days (range, 367–564 days), and six (43%) did so within the normal developmental window of ≤ 534 days. A comprehensive listing of motor milestone achievement is provided in Supplementary Table 4. The highest Bayley and WHO-MGRS motor milestones achieved are in Supplementary Table 5.

Secondary endpoints. All 14 (100%) children in the two-copy cohort were alive and free of permanent ventilation at 14 months of age (first secondary endpoint), compared with 6 of 23 (26%) patients in the PNCR cohort ($P < 0.0001$) (Fig. 1b). Ventilator-free survival remained at 100% at the end of study. No child required mechanical respiratory support (for example, cough-assist, bilevel positive airway pressure, or invasive ventilatory support) of any kind throughout the duration of the trial.

Thirteen (93%) children maintained weight at or above the 3rd percentile without the need for non-oral/mechanical feeding support at all visits up to 18 months of age (second secondary endpoint, $P < 0.0001$) (Fig. 2). All 14 children (100%) remained free of non-oral or mechanical feeding support throughout the trial. Thirteen of 14 (93%) children maintained weight within an age-appropriate reference range (defined as greater than the 3rd percentile from WHO child growth standards²⁵) at all study visits, and 13 of 14 (93%) tolerated thin liquids, as demonstrated through a formal swallowing test at month 18. The remaining child in the two-copy cohort was not assessed for their ability to swallow

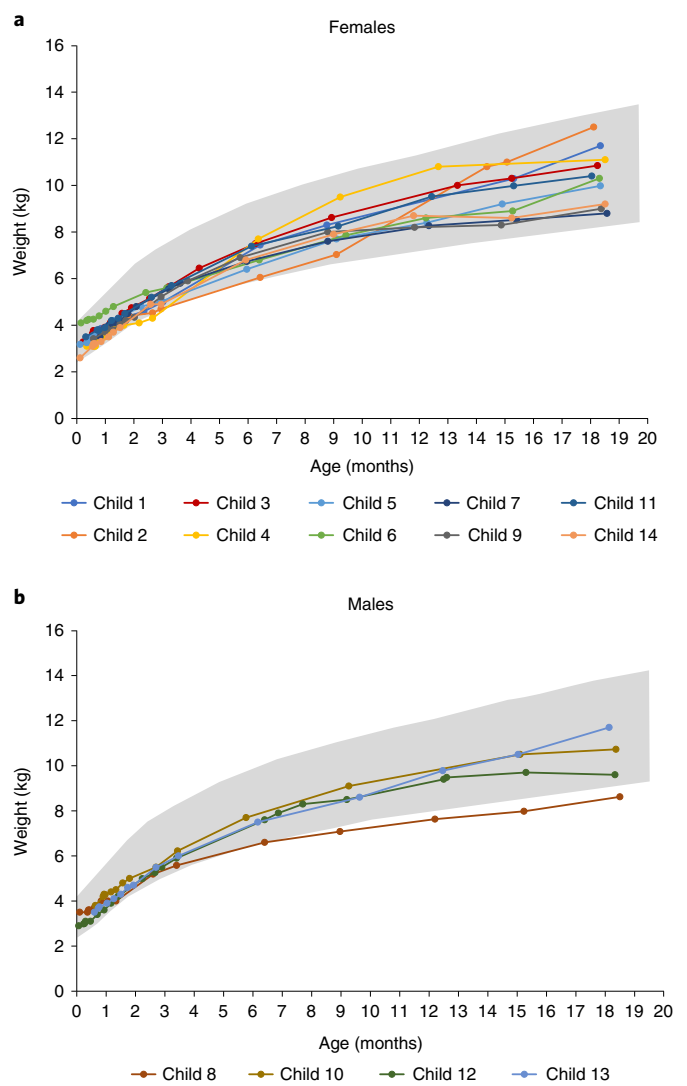


Fig. 2 | Body weight over time. Children achieved the ability to maintain weight at or greater than the 3rd percentile, without the need for non-oral or mechanical feeding support at any visit up to 18 months of age for female (a) and male (b) individuals, according to the WHO child growth standards²⁵. Gray shading represents WHO growth standards for the 3rd through 97th percentiles. $n = 4$ males and $n = 10$ females; mean (s.d.) age at dosing, 20.6 (7.9) days.

thin liquids. Ultimately, 12 (86%) children were thriving at the 18-month study visit; they could tolerate thin liquids by mouth and maintained an age-appropriate weight without mechanical feeding support ($P < 0.0001$; Supplementary Table 6).

Exploratory endpoints. In addition to documenting motor milestones, ventilator-free survival, and growth, SPRINT included a number of other exploratory endpoints of motor function. CHOP INTEND scores (maximum score of 64) increased rapidly during the initial 3 months after onasemnogene abeparvovec infusion. Similar to the mean (s.d.) scores observed in normally developing children (47.2 (10.0) and 56.7 (5.8) at 0 and 3 months, respectively)⁸, the mean (s.d.) CHOP INTEND score for children in the two-copy cohort was 46.1 (8.8) at baseline, which increased by 3.9 (8.3) 1 month after treatment, 11.2 (8.8) at the 3 months of age visit, and 14.8 (8.1) at the visit at 6 months of age (Fig. 3a). CHOP INTEND scores reached a median of 60 (range, 51–64) by the 6-month study visit. All 14 children (100%) achieved

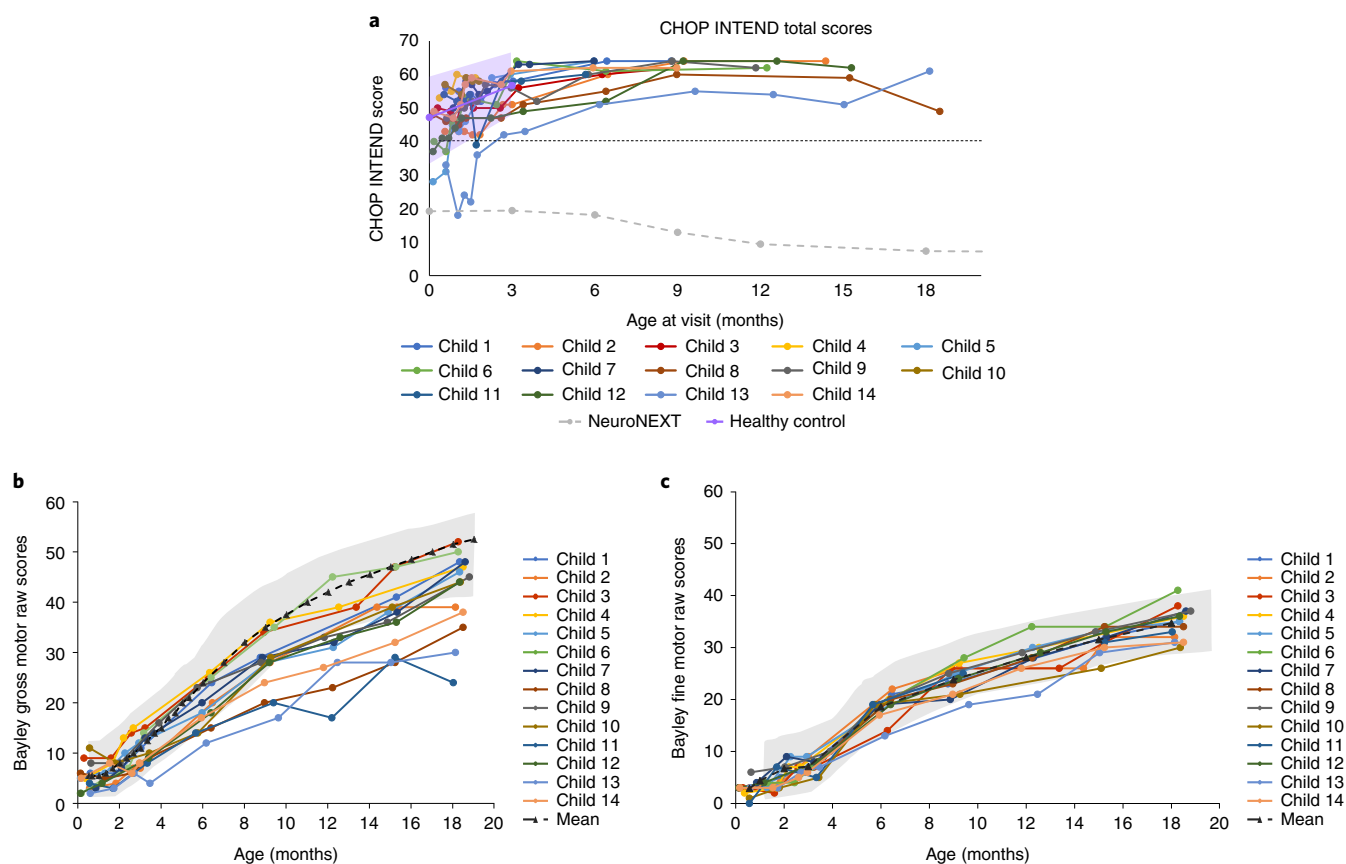


Fig. 3 | Patient-level motor function as assessed by CHOP INTEND and Bayley gross and fine motor scores. a, The dashed straight line represents a CHOP INTEND score of 40, which is a score that untreated patients with SMA type 1 rarely achieve in the natural history of the disease⁷. Shading represents the CHOP INTEND values obtained from normal healthy control infants in the NeuroNEXT study with the mean values presented as a solid purple line⁸. NeuroNext infants were 6 months of age or younger and born between 36–42 weeks gestation and were evaluated using the Test of Infant Motor Performance Screening Items (TIMPSI) and CHOP INTEND (for children who scored <41 on TIMPSI)⁸. The dashed gray line represents the mean change in CHOP INTEND score observed in the NeuroNEXT study of children with SMA type 1 who did not receive disease-modifying treatments⁸. Children who achieved three consecutive CHOP INTEND scores ≥ 58 were not tested further. Bayley scales gross motor (**b**) and fine motor (**c**) subtests. The Bayley scales gross and fine motor normal ranges (± 2 s.d.) are presented in gray highlights. $n=4$ males and $n=10$ females; mean (s.d.) age at dosing, 20.6 (7.9) days.

a CHOP INTEND score greater than 40, a threshold never achieved in untreated SMA type 1 patients older than 6 months of age ($P < 0.0001$)^{7,8}, whose CHOP INTEND scores instead decreased by an average 10.7 points between 6 and 12 months of age⁸. All children in the SPRINT two-copy cohort ultimately achieved a CHOP INTEND score of at least 58 by 18 months of age ($P < 0.0001$) (Supplementary Table 7).

All 14 children (100%) demonstrated incremental gains on BSID gross and fine motor scales throughout the study duration, and all improved at least 15 points from baseline at any visit up to 18 months of age (Fig. 3b,c and Supplementary Table 8). However, BSID gross motor scores varied for children at the 18-month study visit, and five children were below the ranges (\pm s.d.) for normally developing children. These BSID raw scores were converted into scaled scores to allow comparison with the normative mean and distribution of BSID scores for unaffected peers. BSID-scaled scores have a normative mean of 10 and standard deviation (s.d.) of three, such that scaled scores of 4–16 represent two s.d. from the normative mean and capture the 3rd to 97th percentile range for normally developing children of similar age²⁷. At one or more post-baseline visit(s), all 14 children in the two-copy cohort had a scaled score ≥ 4.0 (within 2 s.d. of the reference mean) on both the gross motor and fine motor BSID assessments measured at the same visit. Nine (64%) children achieved a scaled gross and fine motor score of ≥ 4.0 at 18 months.

Gains in motor function were paralleled by electrophysiologic evidence of improved motor nerve integrity. For 14 children in the two-copy cohort, median peroneal CMAP values increased by 0.60 mV (range, -1.3 , 4.0 mV) from a median baseline of 3.9 mV (range, 2.1, 6.1), reaching a maximum post-baseline median value of 4.5 mV (range, 2.6, 6.8) (Supplementary Table 9).

Safety endpoints. To mitigate the inflammatory response to AAV9, all 14 children commenced oral prednisolone therapy 1 day prior to onasemnogene abeparvovec infusion and completed a median of 60 (range, 49–100) days of therapy. One hundred and fifty-nine treatment-emergent AEs (TEAEs) were observed for the two-copy cohort during the study (Supplementary Tables 10 and 11). Each child experienced at least one TEAE, and five (36%) had at least one TEAE deemed to be serious. Ten of 14 (71%) had at least one TEAE considered by the investigator to be related to study treatment, but none were serious.

Five categories of AESIs were analyzed: hepatotoxicity, thrombocytopenia, cardiac toxicity, TMA, and sensory abnormalities suggestive of dorsal root ganglionopathy (Table 2). Seven hepatotoxicity AESIs occurred in three of 14 (21%) children. All events were mild or moderate, clinically asymptomatic, considered related to treatment, and resolved. One (7%) child had serum aminotransferase enzyme concentrations exceeding three times the ULN beginning on Day 352 (that is, CTCAE grade 2), and this was

Table 2 | Treatment-emergent adverse events of special interest (safety population)

Category of AESI preferred term	SPRINT two-copy cohort (<i>n</i> = 14 ^b) (%)
Hepatotoxicity	
Any TEAE	3 (21)
Aspartate aminotransferase increased	3 (21)
Alanine aminotransferase increased	1 (7)
Gamma-glutamyltransferase increased	1 (7)
Thrombocytopenia	
Any TEAE	3 (21)
Thrombocytopenia	1 (7)
Vessel puncture site bruise	1 (7)
Platelet count decreased	1 (7)
Cardiac adverse events	
Any TEAE	2 (14)
Blood creatine phosphokinase MB increased	1 (7)
Blood creatine phosphokinase increased	1 (7)
Troponin increased	1 (7)
Sensory abnormalities suggestive of ganglionopathy	
Any TEAE	3 (21)
Areflexia	2 (14)
Hyporeflexia	1 (7)
Thrombotic microangiopathy^a	
Any TEAE	2 (14)
Thrombocytopenia	1 (7)
Platelet count decreased	1 (7)

AESI, adverse event of special interest; TEAE, treatment-emergent adverse event. No TEAE representing thrombotic microangiopathy was identified. ^aThrombocytopenia and platelet count decreased are TEAEs that also fall under the thrombotic microangiopathy AESI category. ^bSafety population, *n* = 4 males and *n* = 10 females; mean (s.d.) age at dosing, 20.6 (7.9) days.

resolved with prednisolone dose modification (Supplementary Table 12). Two children experienced a total of four cardiac AESIs, all of which were mild or moderate elevations of creatine phosphokinase, creatine phosphokinase-MB, or troponin I that were asymptomatic and resolved with (*n* = 1) or without (*n* = 3) a temporary increase in the prednisolone dose (Supplementary Table 13). Serum cardiac troponin I was not consistently tested in all children but was elevated on four occasions for two children (maximum 0.153 µg/L on Day 13). Left ventricular ejection and shortening fractions were normal on echocardiogram, and no intracardiac thrombi were observed. Three thrombocytopenia-related AESIs occurred in three children (*n* = 1, thrombocytopenia, *n* = 1, vessel puncture site bruise, and *n* = 1, platelet count decreased), all of which were mild and resolved without intervention (Supplementary Table 14). The investigator considered two events (thrombocytopenia and platelet count decreased) as possibly related to treatment. Both events occurred on Day 8 and resolved on Days 13 and 15, respectively, with no further events reported. None of these children had platelets <75,000 cells/µL per laboratory data, and all platelet counts were within normal limits at the last assessment. No TMA events were reported during the study. Three of 14 (21%) children demonstrated areflexia (*n* = 2) and hyporeflexia (*n* = 1), both AESIs that fell within the dorsal root ganglionopathy-related criteria; however, all were mild and considered unrelated to treatment (Supplementary Table 15). Two resolved and one (areflexia) was ongoing at the end of study.

Discussion

Neonates genetically at risk for SMA type 1 who were treated in this study before 6 weeks of age, prior to symptom onset, collectively achieved developmental milestones to an extent never reported for either untreated patients with SMA type 1 or those treated with onasemnogene abeparvovec after the onset of neuromuscular symptoms. Without treatment, children with SMA type 1 never sit independently, and those with the milder SMA type 2 phenotype never achieve the ability to stand or walk. Residual motor deficits were apparent for patients treated at an older age (median, 3.5 and 4.1 months, respectively) in STRIVE-US (*n* = 22) and STRIVE-EU (*n* = 32). Only 64% of patients in STRIVE-US and 44% of patients in STRIVE-EU achieved the independent sitting endpoint, and did so at later median ages of 12.6 (US) and 15.9 (EU) months^{13,14}. Only one patient from each cohort walked by age 18 months^{13,14}. In contrast, children in the two-copy cohort of SPRINT achieved remarkable gains in motor milestones: 100% sat, 71% stood, and 71% walked independently, and most did so within the normal developmental window. Exceptional motor and functional outcomes were also observed for children in the three-copy cohort of SPRINT²⁶.

For children in the two-copy SPRINT cohort, motor gains and somatic growth nearly paralleled normal development while swallowing and respiratory function remained intact. Importantly, no child required any form of mechanical feeding or respiratory support at any time point during the trial. In comparison, 32% of symptomatic STRIVE-US patients required feeding support at some point during the study, and 18% required ventilatory support by 18 months of age¹³. Taken together, these data support the conclusion that earlier identification through systematic newborn-screening efforts and administration of onasemnogene abeparvovec prior to symptom onset results in improved developmental outcomes and greater functional independence.

Table 3 presents SPRINT in the context of three other clinical trials, including two Phase III studies of onasemnogene abeparvovec for symptomatic infants with two copies of *SMN2* (STRIVE-US¹³ and STRIVE-EU¹⁴) and the Phase II study of infants with two or three copies of *SMN2* treated with nusinersen prior to symptom onset (NURTURE)²³. Overall, Table 3 highlights the importance of treatment timing (that is, prior to the onset of clinical symptoms) as an important factor influencing outcome. However, direct comparisons are limited by differences in trial design, including primary endpoints (for example, percentage of patients who achieved 'sits without support' BSID item #26 milestone for the SPRINT two-copy cohort versus time to death or respiratory intervention for NURTURE) and eligibility criteria (for example, ability to tolerate thin liquids, peroneal CMAP ≥2 mV, presymptomatic SMA type 1 or type 2 in SPRINT versus ulnar CMAP ≥1 mV, absence of hypoxia, and no clinical signs or symptoms suggestive of SMA in NURTURE). Achievement of motor milestones in SPRINT is also distinguished by its stringency, requiring video-confirmed assessment by an independent observer in both the two- and three-copy cohorts²⁶. Regardless of these caveats, children with either few or no clinical signs of SMA who receive treatment appear to achieve more advanced developmental milestones.

In contrast with the natural history of SMA type 1, motor improvements in SPRINT were evident within 3 months of treatment, when many children had CHOP INTEND scores similar to those of healthy peers⁸. Beyond this time interval, CHOP INTEND scores for all children in the two-copy cohort remained greater than 40, a threshold never achieved by untreated patients with SMA type 1 older than 6 months of age^{7,8}. All children in the two-copy cohort continued to make incremental gains on BSID gross and fine motor scales throughout the trial. These gains are also demonstrated in the three-copy cohort as reported in our companion manuscript²⁶. Because motor neurons are post-mitotic, there is reason to speculate that transgene expression will be maintained in the spinal

Table 3 | Summary of SPRINT results and other SMA studies and cohorts^a

	PNCr ⁷	Onasemnogene abeparvovec				Nusinersen	
		Symptomatic patients		Presymptomatic children		Presymptomatic children	
		STRIVE-US ¹³	STRIVE-EU ¹⁴	SPRINT two-copy cohort	SPRINT three-copy cohort	NURTURE ^b two-copy cohort ²³	NURTURE ^b three-copy cohort ²³
Intention-to-treat population, <i>n</i>	23	22	32	14	15	15	10
SMN2 copies	2	2	2	2	3	2	3
Median (range) age at diagnosis, days	N/A	67 (56–126) ^c	76 (26–156)	8 (1–14)	8 (2–26)	N/A	N/A
Median (range) age at infusion, days	N/A	105 (15–177)	123 (54–180)	21 (8–34)	32 (9–43)	19 (8–41)	23 (3–42)
Baseline median (range) CHOP INTEND	32.5 (31–33) ^d	33.5 (18–52)	28.0 (14–55)	48.5 (28–57)	N/A	45.0 (25–60)	53.5 (40–60)
Baseline median (range) CMAP amplitude, mV ^e	0.3 (0.04–1.1)	N/A	N/A	3.9 (2.1–6.1)	4.1 (2.7–7.0)	3.2 (1.1–9.7)	4.0 (0.2–7.0)
Sitting independently by 18 months, <i>n</i> (%) ^f	0	14 (64)	14 (44)	14 (100)	N/A	N/A	N/A
Sitting independently by 24 months, <i>n</i> (%) ^f	0	N/A	N/A	N/A	14 (93)	15 (100)	10 (100)
Standing independently by 18 months of age, <i>n</i> (%) ^f	0	1 (5)	1 (3)	11 (79)	N/A	N/A	N/A
Standing independently by 24 months of age, <i>n</i> (%) ^f	0	N/A	N/A	N/A	15 (100)	9 (60)	10 (100)
Walking independently by 18 months, <i>n</i> (%) ^f	0	1 (5)	1 (3)	9 (64)	N/A	N/A	N/A
Walking independently by 24 months, <i>n</i> (%) ^f	0	N/A	N/A	N/A	14 (93)	9 (60)	10 (100)
Alive without permanent ventilation at 18 months, <i>n</i> (%) ^f	6 (26) ^g	20 (91)	31 (97)	14 (100)	15 (100)	15 (100)	10 (100)

N/A, not available. ^aThere are no published head-to-head studies of onasemnogene abeparvovec and nusinersen. Differences in trial design, including primary endpoints, how endpoints were measured, and eligibility criteria, make direct comparison of results from these studies infeasible. The PNCr measured CHOP INTEND, NURTURE measured WHO and HINE-2 criteria, and STRIVE-US and STRIVE-EU measured WHO criteria and CHOP INTEND. ^bNURTURE results represent interim analysis at data cut of 29 March 2019. At the time of this analysis, the median age of the infants was 34.8 months (25.7–45.4)²³. ^cMedian (range) is reported as the interquartile range. ^dValues indicate median (interquartile range) obtained for patients with symptom onset <3 months of age, a group that included seven patients with two SMN2 copies and one patient with three SMN2 copies. ^eUlnar CMAP amplitude recorded from the abductor digiti minimi muscle at baseline for the PNCr study (*n* = 34 patients with SMA type 1; *n* = 23, two SMN2 copies and *n* = 9, three SMN2 copies) and peroneal CMAP amplitude recorded from the tibialis anterior muscle for the SPRINT and NURTURE studies. ^fMilestones were evaluated over different observation periods between studies, and included 18 months for STRIVE-US, STRIVE-EU, and the SPRINT two-copy cohort, 24 months for the SPRINT three-copy cohort, and a median follow-up time of 35 months for NURTURE. ^gSurvival without permanent ventilation at 14 months.

cord long-term. Accordingly, we are conducting follow-up studies to determine longitudinal motor outcomes for up to 15 years in children who participated in SPRINT. Indeed, data from the ongoing START extension study demonstrated that newly acquired motor skills were maintained for 4.6–5.6 years after vector infusion for patients, some of whom also received nusinersen²⁸. Furthermore, new motor milestones were achieved after completion of the 24-month START parent study. Neither of the patients in the therapeutic-dose cohort who achieved new milestones in the 24-month START study received nusinersen at any point²⁸.

In this study, BSID gross motor scores varied for children at the 18-month study visit. These inter-individual differences in therapeutic response might, in part, reflect the extent of antenatal developmental neuropathologic changes that can result from SMN protein deficiency during fetal life^{29–32}. Nevertheless, timely administration of SMN gene replacement prevents the rapid clinical deterioration normally observed in untreated patients with SMA type 1, likely by preventing denervation of motor units within the first 3 postnatal months³³. In support of this idea, we observed median peroneal CMAP values of the two-copy cohort increase by 0.60 mV

(range, –1.3, 4.0 mV) from baseline to the end of study. This contrasts with the age-dependent reduction in CMAP values observed in untreated patients with SMA type 1³³.

Administration of onasemnogene abeparvovec between 8 and 34 days of age demonstrated a favorable safety profile^{13,14}. TEAEs of transient elevations of liver enzymes were asymptomatic and generally mild. Platelet counts decreased transiently in a few children, but never below 75,000 cells/μL. None of the cardiac TEAEs reported were associated with clinical signs or symptoms of cardiac dysfunction, depressed cardiac function on echocardiograms, or rhythm disturbances on electrocardiograms. No cases of TMA and no events of thrombosis were reported in this study. Three children had potential TEAEs that were sensory abnormalities suggestive of dorsal root ganglionopathy: two children had areflexia and one had hyporeflexia, both of which are common features of SMA³⁴. None of these children exhibited other obvious evidence of dorsal root ganglionopathy, such as painful paresthesias, sensory loss, or ataxia, although these signs may be difficult to detect in young children^{35,36}. However, all potential dorsal-root-ganglionopathy-related TEAEs were considered unrelated to treatment, and two of these events

resolved. The ongoing areflexia observed in one child may be reflective of underlying disease, as weak or absent deep tendon stretch reflexes are universally observed in untreated patients with SMA type 1. The favorable benefit–risk profile observed in the SPRINT two-copy cohort is consistent with observations from patients with symptomatic SMA type 1 treated with onasemnogene abeparvovec in STRIVE-US¹³. However, no serious TEAEs related to treatment were observed in SPRINT two-copy patients, whereas three (elevated hepatic aminotransferases in two patients and hydrocephalus in one patient) were observed in STRIVE-US¹³. Because the immune system is relatively tolerant to non-self antigens during the neonatal period³⁷, it is possible that a less vigorous immune response against the vector capsid may occur in newborns.

With the availability of treatments like onasemnogene abeparvovec, there is even more urgency to identify children early in life by newborn screening and to thereby prevent death and disability by treating them presymptomatically. All children in the two-copy cohort of SPRINT were diagnosed by either newborn screening ($n=9$) or prenatal testing ($n=5$) before overt signs of neuromuscular disease appeared. Presymptomatic diagnosis, when coupled with an effective therapy with acceptable risk, underscores the four Wilson and Jungner criteria³⁸ most relevant to newborn screening that apply to, and are fulfilled by, SMA. These criteria are (1) an established natural history marked by significant burden of suffering and detectable preclinical phase; (2) the target population is clearly defined, including optimal timing of treatment; (3) a positive screening result triggers a consensus plan of action that includes a confirmatory testing algorithm, beneficial intervention with acceptable risk, and follow-up plan; and (4) the screening platform is robust, reproducible, and affordable at a population scale³⁹. Several pilot SMA newborn-screening programs preceded SPRINT and now comprise more than 3,700,000 neonates screened during 6 years^{40–44}. These studies demonstrate that *SMN1* deletions are reliably detected from dried filter paper blood spots using high-throughput methods with excellent performance for marginal incremental cost^{44–53}. They also demonstrate that some neonates, particularly those with two *SMN2* copies, develop signs of disease in the first few weeks of life⁵⁴, consistent with several screen failures in SPRINT. This emphasizes the urgency of timely diagnosis and treatment afforded by newborn screening. In the longer term, newborn screening coupled with presymptomatic treatment holds promise to improve health-related quality of life and reduce overall medical costs for infants otherwise expected to develop SMA type 1⁴⁷. On the basis of these considerations, SMA was added to the Recommended Uniform Screening Panel in 2018^{55,56}. As of June 2022, 46 states screen for SMA, capturing 97% of US newborns (www.curesma.org), and similar programs are taking hold worldwide.

Limitations of SPRINT include the relatively small number of participants, the use of the PNCr external comparator group, and the exclusion of children with baseline CMAP <2 mV.

In this study, we demonstrate that onasemnogene abeparvovec, administered during the first 6 weeks post-partum to infants with biallelic *SMN1* mutations and two *SMN2* copies, but no clinical signs of SMA, alters the natural course of disease and results in better motor outcomes, ventilator-free survival, and nutritional and respiratory independence as compared with untreated patients with SMA type 1 or those treated after symptom onset. Early onasemnogene abeparvovec administration also has a favorable benefit–risk profile in presymptomatic newborns ≤6 weeks of age. To the extent these benefits endure, neonatal *SMN* gene-replacement therapy driven by systematic newborn screening efforts holds promise to ease the global burden of suffering caused by SMA type 1.

Online content

Any methods, additional references, Nature Research reporting summaries, source data, extended data, supplementary information,

acknowledgements, peer review information; details of author contributions and competing interests; and statements of data and code availability are available at <https://doi.org/10.1038/s41591-022-01866-4>.

Received: 18 February 2022; Accepted: 10 May 2022;

Published online: 17 June 2022

References

- Coovert, D. D. et al. The survival motor neuron protein in spinal muscular atrophy. *Hum. Mol. Genet.* **6**, 1205–1214 (1997).
- Mailman, M. D. et al. Molecular analysis of spinal muscular atrophy and modification of the phenotype by SMN2. *Genet. Med.* **4**, 20–26 (2002).
- Calucho, M. et al. Correlation between SMA type and SMN2 copy number revisited: an analysis of 625 unrelated Spanish patients and a compilation of 2834 reported cases. *Neuromuscul. Disord.* **28**, 208–215 (2018).
- Thomas, N. H. & Dubowitz, V. The natural history of type I (severe) spinal muscular atrophy. *Neuromuscul. Disord.* **4**, 497–502 (1994).
- McGrattan, K. E., Graham, R. J., DiDonato, C. J. & Darras, B. T. Dysphagia phenotypes in spinal muscular atrophy: the past, present, and promise for the future. *Am. J. Speech Lang. Pathol.* **30**, 1008–1022 (2021).
- Finkel, R. S., Weiner, D. J., Mayer, O. H., McDonough, J. M. & Panitch, H. B. Respiratory muscle function in infants with spinal muscular atrophy type I. *Pediatr. Pulmonol.* **49**, 1234–1242 (2014).
- Finkel, R. S. et al. Observational study of spinal muscular atrophy type I and implications for clinical trials. *Neurology* **83**, 810–817 (2014).
- Kolb, S. J. et al. Natural history of infantile-onset spinal muscular atrophy. *Ann. Neurol.* **82**, 883–891 (2017).
- Ramdas, S. & Servais, L. New treatments in spinal muscular atrophy: an overview of currently available data. *Expert Opin. Pharmacother.* **21**, 307–315 (2020).
- Novartis Gene Therapies. Zolgensma prescribing information. <https://www.novartis.us/sites/www.novartis.us/files/zolgensma.pdf> (2021).
- Foust, K. D. et al. Intravascular AAV9 preferentially targets neonatal neurons and adult astrocytes. *Nat. Biotechnol.* **27**, 59–65 (2009).
- Thomsen, G. et al. Biodistribution of onasemnogene abeparvovec DNA, mRNA and SMN protein in human tissue. *Nat. Med.* **27**, 1701–1711 (2021).
- Day, J. W. et al. Onasemnogene abeparvovec gene therapy for symptomatic infantile-onset spinal muscular atrophy with two copies of SMN2 (STRIVE): an open-label, single-arm, phase 3 study. *Lancet Neurol.* **20**, 284–293 (2021).
- Mercuri, E. et al. Onasemnogene abeparvovec gene therapy for symptomatic infantile-onset spinal muscular atrophy type 1 (STRIVE-EU): an open-label, single-arm, multicentre, phase 3 trial. *Lancet Neurol.* **20**, 832–841 (2021).
- Weiß, C. et al. Gene replacement therapy with onasemnogene abeparvovec in children with spinal muscular atrophy aged 24 months or younger and bodyweight up to 15 kg: an observational cohort study. *Lancet Child Adolesc. Health* **6**, 17–27 (2022).
- Day, J. W. et al. Clinical trial and postmarketing safety of onasemnogene abeparvovec therapy. *Drug Saf.* **44**, 1109–1119 (2021).
- Chand, D. et al. Hepatotoxicity following administration of onasemnogene abeparvovec (AVXS-101) for the treatment of spinal muscular atrophy. *J. Hepatol.* **74**, 560–566 (2021).
- Mendell, J. R. et al. Single-dose gene-replacement therapy for spinal muscular atrophy. *N. Engl. J. Med.* **377**, 1713–1722 (2017).
- Al-Zaidy, S. A. et al. AVXS-101 (onasemnogene abeparvovec) for SMA1: comparative study with a prospective natural history cohort. *J. Neuromuscul. Dis.* **6**, 307–317 (2019).
- Waldrop, M. A. et al. Gene therapy for spinal muscular atrophy: safety and early outcomes. *Pediatrics* **146**, e20200729 (2020).
- Govoni, A. et al. Time is motor neuron: therapeutic window and its correlation with pathogenetic mechanisms in spinal muscular atrophy. *Mol. Neurobiol.* **5**, 6307–6318 (2018).
- Lowe, L. P. et al. Impact of age and motor function in a phase 1/2a study of infants with SMA type 1 receiving single-dose gene replacement therapy. *Pediatr. Neurol.* **98**, 39–45 (2019).
- De Vivo, D. C. et al. Nusinersen initiated in infants during the presymptomatic stage of spinal muscular atrophy: Interim efficacy and safety results from the Phase 2 NURTURE study. *Neuromuscul. Disord.* **29**, 842–856 (2019).
- Servais, L. et al. RAINBOWFISH: a study of risdiplam in infants with presymptomatic spinal muscular atrophy (SMA). *Neuromuscul. Disord.* **31**, S48 (2021).
- WHO Multicentre Growth Reference Study Group. WHO Motor Development Study: windows of achievement for six gross motor development milestones. *Acta Paediatr. Suppl.* **450**, 86–95 (2006).
- Strauss, K. A. et al. Onasemnogene abeparvovec for presymptomatic infants with three copies of SMN2 at risk for spinal muscular atrophy: The Phase III SPRINT trial. *Nat. Med.* <https://doi.org/10.1038/s41591-022-01867-3> (2022).

27. Bayley, N. *Bayley Scales of Infant and Toddler Development: Administration Manual*. 3rd edn (Pearson PsychCorp, 2006).
28. Mendell, J. R. et al. Five-year extension results of the phase 1 START trial of onasemnogene abeparvovec in spinal muscular atrophy. *JAMA Neurol.* **78**, 834–841 (2021).
29. Perez-Garcia, M. J., Kong, L., Sumner, C. J. & Tizzano, E. F. in *Spinal Muscular Atrophy: Disease Mechanisms and Therapy* (eds Sumner, C. J., Paushkin, S. & Ko, C. P.) 21–42 (Academic Press, 2017).
30. Harding, B. N. et al. Spectrum of neuropathophysiology in spinal muscular atrophy type I. *J. Neuropathol. Exp. Neurol.* **74**, 15–24 (2015).
31. Fidzińska, A. & Rafalowska, J. Motoneuron death in normal and spinal muscular atrophy-affected human fetuses. *Acta Neuropathol.* **104**, 363–368 (2002).
32. Simic, G. et al. Ultrastructural analysis and TUNEL demonstrate motor neuron apoptosis in Werdnig–Hoffmann disease. *J. Neuropathol. Exp. Neurol.* **59**, 398–407 (2000).
33. Swoboda, K. J. et al. Natural history of denervation in SMA: relation to age, SMN2 copy number, and function. *Ann. Neurol.* **57**, 704–712 (2005).
34. Audic, F. & Barnerias, C. Spinal muscular atrophy (SMA) type I (Werdnig–Hoffmann disease). *Arch. Pediatr.* **27**, 7S15 (2020).
35. Amato, A. A. & Ropper, A. H. Sensoryganglionopathy. *N. Engl. J. Med.* **383**, 1657–1662 (2020).
36. Mueller, C. et al. SOD1 suppression with adeno-associated virus and microRNA in familial ALS. *N. Engl. J. Med.* **383**, 151–158 (2020).
37. Ponder, K. P. Immunology of neonatal gene transfer. *Curr. Gene Ther.* **7**, 403–410 (2007).
38. Wilson, J. M. G. & Jungner, G. *Principles and Practice of Screening for Disease*. Public Health Papers No. 34 (World Health Organization, 1968).
39. Dobrow, M. J., Hagens, V., Chafe, R., Sullivan, T. & Rabeneck, L. Consolidated principles for screening based on a systematic review and consensus process. *CMAJ* **190**, E422–E429 (2018).
40. Chien, Y. H. et al. Presymptomatic diagnosis of spinal muscular atrophy through newborn screening. *J. Pediatr.* **190**, 124–9.e1 (2017).
41. Kraszewski, J. N. et al. Pilot study of population-based newborn screening for spinal muscular atrophy in New York state. *Genet. Med.* **20**, 608–613 (2018).
42. Lin, Y. et al. Newborn screening for spinal muscular atrophy in China using DNA mass spectrometry. *Front. Genet.* **10**, 1255 (2019).
43. Vill, K. et al. One year of newborn screening for SMA—results of a German pilot project. *J. Neuromuscul. Dis.* **6**, 503–515 (2019).
44. Dangouloff, T., Vrščaj, E., Servais, L. & Osredkar, D., SMA NBS World Study Group. Newborn screening programs for spinal muscular atrophy worldwide: Where we stand and where to go. *Neuromuscul. Disord.* **31**, 574–582 (2021).
45. Czibere, L. et al. High-throughput genetic newborn screening for spinal muscular atrophy by rapid nucleic acid extraction from dried blood spots and 384-well qPCR. *Eur. J. Hum. Genet.* **28**, 23–30 (2020).
46. Dobrowolski, S. F. et al. Newborn screening for spinal muscular atrophy by calibrated short-amplicon melt profiling. *Clin. Chem.* **58**, 1033–1039 (2012).
47. Phan, H. C., Taylor, J. L., Hannon, H. & Howell, R. Newborn screening for spinal muscular atrophy: anticipating an imminent need. *Semin. Perinatol.* **39**, 217–229 (2015).
48. Shih, S. T., Farrar, M. A., Wiley, V. & Chambers, G. Newborn screening for spinal muscular atrophy with disease-modifying therapies: a cost-effectiveness analysis. *J. Neurol. Neurosurg. Psychiatry* **92**, 1296–1304 (2021).
49. D’Silva, A. M. et al. Integrating newborn screening for spinal muscular atrophy into health care systems: an Australian pilot programme. *Dev. Med. Child Neurol.* **64**, 625–632 (2021).
50. Kariyawasam, D. S. T. et al. “We needed this”: perspectives of parents and healthcare professionals involved in a pilot newborn screening program for spinal muscular atrophy. *EClinicalMedicine* **33**, 100742 (2021).
51. Kariyawasam, D. S. T., Russell, J. S., Wiley, V., Alexander, I. E. & Farrar, M. A. The implementation of newborn screening for spinal muscular atrophy: the Australian experience. *Genet. Med.* **22**, 557–565 (2020).
52. Boemer, F. et al. Three years pilot of spinal muscular atrophy newborn screening turned into official program in Southern Belgium. *Sci. Rep.* **11**, 19922 (2021).
53. Dangouloff, T., Burghes, A., Tizzano, E. F. & Servais, L., NBS SMA Study Group. 24th ENMC international workshop: newborn screening in spinal muscular atrophy May 10–12, 2019, Hoofddorp, The Netherlands. *Neuromuscul. Disord.* **30**, 93–103 (2020).
54. Kong, L. et al. Impaired prenatal motor axon development necessitates early therapeutic intervention in severe SMA. *Sci. Transl. Med.* **13**, eabb6871 (2021).
55. Kay, D. M. et al. Implementation of population-based newborn screening reveals low incidence of spinal muscular atrophy. *Genet. Med.* **22**, 1296–1302 (2020).
56. McCandless, S. E. & Wright, E. J. Mandatory newborn screening in the United States: history, current status, and existential challenges. *Birth Defects Res.* **112**, 350–366 (2020).

Publisher’s note Springer Nature remains neutral with regard to jurisdictional claims in published maps and institutional affiliations.



Open Access This article is licensed under a Creative Commons Attribution 4.0 International License, which permits use, sharing, adaptation, distribution and reproduction in any medium or format, as long as you give appropriate credit to the original author(s) and the source, provide a link to the Creative Commons license, and indicate if changes were made. The images or other third party material in this article are included in the article’s Creative Commons license, unless indicated otherwise in a credit line to the material. If material is not included in the article’s Creative Commons license and your intended use is not permitted by statutory regulation or exceeds the permitted use, you will need to obtain permission directly from the copyright holder. To view a copy of this license, visit <http://creativecommons.org/licenses/by/4.0/>.

© The Author(s) 2022

Methods

Study design. SPRINT was an open-label, single-arm, Phase III study conducted at 16 sites in six countries (Australia, Belgium, Canada, Japan, the United Kingdom, and the United States). The study was conducted in accordance with the Declaration of Helsinki, International Council for Harmonisation/Good Clinical Practice guidelines, and applicable regulatory requirements (for example, those relating to informed consent and the protection of human patients in biomedical research). The study was approved by institutional review boards (IRBs) at all participating institutions (Advarra Center for IRB Intelligence, Nationwide Children's Hospital; UCLA Medical Center IRB #3, David Geffen School of Medicine at University of California Los Angeles; Nemours Office of Human Subjects Protection, Nemours Children's Clinic; Columbia University Medical Center IRB, Columbia University Medical Center; Advarra Center for IRB Intelligence, Massachusetts General Hospital; Children's Hospital of Eastern Ontario Research Ethics Board, Children's Hospital of Eastern Ontario; Sydney Children's Hospitals Network Human Research Ethics Committee, Sydney Children's Hospital; University of Pennsylvania IRB, Clinic for Special Children; Tokyo Women's Medical University IRB, Tokyo Women's Medical University Hospital; The Dubowitz Neuromuscular Centre IRB, University College London; The Neuromuscular Center of Liège, CHU & University of Liège), and written informed consent was obtained from parents or legal guardians of enrolled patients.

Patients. The study included presymptomatic children with SMA genetically defined by biallelic deletions of *SMN1* with either two or three copies of *SMN2* who were expected to develop SMA types 1 or 2, respectively. These children were enrolled in two separate cohorts according to *SMN2* copy number. Children with *SMN1* point mutations or the *SMN2* gene modifier variant (c.859G>C) could enroll, but those with the *SMN2* gene modifier variant would not be included in the intention-to-treat (ITT) population. Efficacy and safety findings for the children with two *SMN2* copies are reported. The study planned to enroll at least 14 children with two copies of *SMN2* who met the ITT criteria and were ≤ 6 weeks of age at the time of gene-replacement therapy (Day 1). Full eligibility criteria are described in the Supplementary Material.

The Coronavirus Disease 2019 (COVID-19) pandemic did not impact retention. All children enrolled in SPRINT completed the study, and none withdrew from the study or were lost to follow-up because of the COVID-19 pandemic. However, some scheduled study visits and assessments were delayed or canceled because of restrictions caused by the COVID-19 pandemic.

Procedures. All children were admitted into the hospital for pretreatment baseline procedures 1 day prior to infusion. Onasemnogene abeparvovec (1.1×10^{14} vg/kg) was administered as a single intravenous infusion (given over approximately 60 minutes) between 10 April 2018 and 3 July 2019. In-patient safety monitoring was conducted for a minimum of 24 hours post-infusion. All children received prophylactic prednisolone (initially 1 mg/kg/day, increased to 2 mg/kg/day following a protocol amendment in May 2019) beginning 24 hours pre-infusion and for 48 hours post-infusion, after which the dosage was 1 mg/kg/day through a minimum of 30 days. Thereafter, prednisolone was tapered according to a standard algorithm, and based on a requirement that gamma-glutamyl transferase, alanine aminotransferase, and aspartate aminotransferase values were below the threshold of twice the ULN. Investigators were permitted to use other glucocorticosteroids in place of prednisolone, alter the daily dosage of prednisolone, and alter the taper schedule according to their clinical judgments.

Outpatient follow-up period consisted of assessments on Days 7, 14, 21, 30, 44, 51 (in Japan only), 60, and 72 post-dose, and then assessments at 3 months of age and continuing every 3 months thereafter through the 18 months of age (end of study) visit. All eligible children were invited to enroll in an ongoing long-term follow-up study (LT-002, NCT04042025).

Outcomes. The primary efficacy endpoint was the ability to sit independently for ≥ 30 seconds at any visit up to 18 months of age, as stipulated by item #26 from the gross motor subtest of the BSID²⁷. Secondary endpoints were survival at 14 months of age, defined as the avoidance of death or requirement of permanent ventilation (tracheostomy or ≥ 16 hours daily respiratory assistance for ≥ 14 consecutive days in the absence of an acute reversible illness, excluding perioperative ventilation) and the ability to maintain body weight at or greater than the 3rd percentile at all visits without the need for feeding support at any visit up to 18 months of age. Exploratory endpoints included achievement of motor milestones as assessed by WHO-MGRS and BSID version 3 gross motor criteria, CHOP INTEND scores, and scores on the BSID gross and fine motor subtests²⁷. Videos demonstrating developmental milestones meeting WHO and BSID criteria (as part of clinical evaluation at study visits or submitted by parent(s)/legal guardian(s) at any time during the study) were reviewed by an independent, central reviewer for unbiased assessment and confirmation of developmental milestone achievement. Patients who achieved three consecutive CHOP INTEND scores ≥ 58 did not continue CHOP INTEND assessments. Pulmonary examinations were performed by a pulmonologist or appropriate individual as per standard institutional practice.

Safety monitoring. Safety was assessed by monitoring for AE incidence and severity, physical examinations, pulmonary examinations, vital sign assessments, weight and length measurements, 12-lead electrocardiogram, 24-hour Holter monitoring, echocardiograms, swallowing tests, laboratory assessments, and photographs of the infusion site. TEAEs included any undesirable medical condition occurring at any time, including baseline, even if no study treatment had been administered.

All AEs were recorded and classified in accordance with the Common Terminology Criteria for Adverse Events (version 4.03) (https://www.eortc.be/services/doc/ctc/ctcae_4.03_2010-06-14_quickreference_5x7.pdf). Serious AEs occurring during the study phase met at least one of the following criteria: resulted in death; was immediately life-threatening; required an in-patient hospitalization or prolongation of existing hospitalization; resulted in a persistent or significant disability or incapacity; resulted in a congenital abnormality or birth defect; or was an important medical event that may have jeopardized the patient or required medical intervention to prevent one of the listed outcomes. The following AESIs were also analyzed: hepatotoxicity, thrombocytopenia, cardiac AEs, TMA, and sensory abnormalities suggestive of dorsal root ganglionopathy. AESIs were identified using TEAE Standardized Medical Dictionary for Regulatory Activities (MedDRA) queries and Customized MedDRA queries related to these categories (see Supplementary Methods for additional information). The relationship of AEs to onasemnogene abeparvovec (unrelated, possibly related, probably related, or definitely related) was determined by the site investigator. If there was any valid reason, even if undetermined, for suspecting a possible cause-and-effect relationship between the investigational product and the occurrence of the AE, then the AE was considered related.

Statistical analysis. Data were analyzed using SAS version 9.4 software (SAS Institute). Primary and secondary efficacy analyses were performed for patients with biallelic *SMN1* deletions and two copies of *SMN2* without the *SMN2* gene modifier variant (c.859G>C), which is associated with a less severe clinical course²⁷, who were included in the ITT population. Primary and secondary outcomes were compared with a cohort of patients from the PNCr natural-history data set (all patients with SMA type 1, two copies of *SMN2*, age at SMA onset ≤ 6 months, and age at SMA diagnosis ≤ 2 years; the *SMN2* modifier mutation (c.859G>C) was not assessed in the PNCr study cohort)¹³. As a substitute for comparison against a rate of zero, we assumed that no more than 0.1% of untreated patients with SMA type 1 achieved independent sitting without support for ≥ 30 seconds up to 18 months of age or achieved the ability to maintain weight at or above the 3rd percentile without the need for non-oral/mechanical feeding support up to 18 months of age, and 26% of patients survived at 14 months according to age-matched natural-history data⁷. This study was designed to have $>90\%$ power with $\alpha = 0.025$ to detect a significant difference in independent sitting using a one-sided exact binomial test based on a sample size of ≥ 14 patients into the ITT population as well as assumptions based on a matched PNCr data set⁷ and START study data^{18,19}. Formal testing for the primary and secondary efficacy endpoints was performed using a hierarchical approach to protect against Type I error as follows. First, the primary endpoint of independent sitting ≥ 30 seconds was assessed. If the analysis of the primary endpoint was determined to be statistically significant ($P < 0.025$), then formal testing of the first secondary endpoint, percentage of patients that survived and did not require permanent ventilation, was conducted. If the analysis of this secondary endpoint was determined to be statistically significant ($P < 0.05$), then formal testing of the second secondary endpoint, maintenance of weight ≥ 3 rd WHO percentile without feeding support at any visit up to 18 months of age, was conducted.

The safety population included all children who received onasemnogene abeparvovec, including children with *SMN1* point mutations and those with the c.859G>C *SMN2* gene modifier variant (no patients with the c.859G>C *SMN2* gene modifier variant were enrolled). Safety was evaluated through reported AEs as well as objective data variables, including vital signs, physical examinations, and laboratory studies. These data are presented in a descriptive fashion. AEs were coded using an industry standardized MedDRA coding dictionary (version 23.0), and AESIs were classified through specific predefined MedDRA terms.

Reporting summary. Further information on research design is available in the Nature Research Reporting Summary linked to this article.

Data availability

A redacted version of the SPRINT study protocol and a redacted version of the statistical analysis plan are available at ClinicalTrials.gov (NCT03505099). Novartis is committed to sharing clinical trial data with external researchers and has been doing so voluntarily since 2014. Novartis is committed to sharing, upon request from qualified external researchers and subsequent approval by an independent review panel based upon scientific merit, anonymized patient-level and study-level clinical trial data, and redacted clinical study reports, for medicines and indications approved in the United States and Europe after the respective study is accepted for publication. All data provided are anonymized to respect the privacy of patients who have participated in the trial, in line with applicable laws and regulations.

This trial data availability is according to the criteria and process described on www.clinicalstudydatarequest.com.

References

57. Prior, T. W. et al. A positive modifier of spinal muscular atrophy in the *SMN2* gene. *Am. J. Hum. Genet.* **85**, 408–413 (2009).

Acknowledgements

The authors wish to thank the investigators, site coordinators and study teams, administrators of newborn screening programs, and most importantly, the patients, families, and caregivers for their participation in these studies. The authors also thank M. Milton of Novartis Institutes for BioMedical Research, who provided critical review and input on content related to biodistribution, immune response, and safety; S. P. Reyna, who provided critical review and input on care of patients with SMA; and M. Wolf of Novartis Gene Therapies, who provided functional outcome measure expertise and contributions to study conduct and oversight. Medical writing assistance and editorial support was provided by M. Heitzer of Kay Square Scientific, and M. Nissen, of Novartis Gene Therapies. This support was funded by Novartis Gene Therapies. The NSW Pilot NBS study was funded by Luminesce Alliance, a not-for-profit cooperative joint venture across the Sydney Children's Hospital Network, Children's Medical Research Institute, and Children's Cancer Institute, established with the support of the NSW Government. Luminesce Alliance is also affiliated with UNSW Sydney and The University of Sydney. The SPRINT study was designed and funded by Novartis Gene Therapies, Inc., which was involved in the study design, data collection, data analysis, data interpretation, and writing of all related reports and publications. Novartis Gene Therapies, Inc., sponsored this study.

Author contributions

Conceived or designed the study: B.E.M., T.A.M. Collected data: K.A.S., M.A.F., F.M., K.S., J.R.M., L.S., H.J.M., R.S.F., K.J.S., J.M.K. (Krueger), C.M.Z., C.A.C., S.T.I., J.M.K. (Kwon), J.A.P., P.B.S. Accessed and verified data: K.A.S., T.A.M., B.E.M., S.K. Interpreted data: All authors. Wrote or contributed to the writing of the manuscript: All authors.

Competing interests

Novartis Gene Therapies, Inc., sponsored this clinical trial. The authors declare the following competing interests: K.A.S. has received personal compensation from Novartis Gene Therapies, Inc., (formerly AveXis) for serving as an advisory board member and from Biogen for serving as a visiting professor; and has received research support from Novartis Gene Therapies, Inc., and Biogen-sponsored clinical trials. M.A.F. has received honoraria for scientific advisory boards from Novartis Gene Therapies, Inc., Biogen, and Roche, and research grants from Biogen. F. M. reports grants and personal fees from Novartis Gene Therapies, Inc., including participation in the STRIVE-EU grant and the SPRINT study; grants, personal fees, and other (participation in the SHINE clinical trial and principal investigator of the investigator-initiated UK SMA REACH UK registry) from Biogen; and grants and personal fees from Roche, including participation in the JEWELFISH clinical trial of risdiplam and participation in the olesoxime clinical trial, during the conduct of the study. He has received honoraria for scientific advisory boards from Biogen, Novartis, Novartis Gene Therapies, Inc., PTC, Roche, and Sarepta. K. S. has served on advisory boards for Biogen, Novartis Gene

Therapies, Inc., Novartis, and Chugai (Roche), and has received research funding from Biogen. J. R. M. has received personal compensation for clinical trial consulting and for serving on scientific advisory boards, as well as research support, from Novartis Gene Therapies, Inc. L.S. has received personal compensation as an advisory committee board member/consultant from Novartis Gene Therapies, Inc., Biogen, Biophytis, Cytokinetics, Dynacure, Roche, Santhera, and Sarepta Therapeutics, and has received research support from Novartis Gene Therapies, Inc., Biogen, Dynacure, and Roche. H. J. M. has received honoraria for scientific advisory boards from Novartis Gene Therapies, Inc., and research funding from Roche. R. S. F. has received personal compensation for consulting for advisory board participation from Novartis Gene Therapies, Inc., Biogen, Roche, and Scholar Rock, and for consulting from Novartis; editorial fees from Elsevier for co-editing a neurology textbook; license fees from the Children's Hospital of Philadelphia; research funding from Novartis Gene Therapies, Inc., Biogen, Roche/Genentech, and Scholar Rock. K. J. S. has received personal compensation for a speaking engagement from Biogen, and research funding as a principal investigator for clinical trials sponsored by Novartis Gene Therapies, Inc., and Biogen. J. M. K. (Kwon) was her site's principal investigator for clinical trials sponsored by Novartis Gene Therapies, Inc., Biogen, and Scholar Rock. C. M. Z. has received research support from Biogen. C. A. C. has served on advisory boards for Novartis Gene Therapies, Inc., Genentech, and Roche; served as an educational speaker for Biogen, and has received research funding from Novartis Gene Therapies, Inc., Biogen, and Roche. S. T. I. has received personal compensation for service on advisory boards or consulting from Novartis Gene Therapies, Inc., Biogen, Roche-Genentech, and Sarepta; and research support from Novartis Gene Therapies, Inc., Biogen, Capricor, PTC, Scholar Rock, and Sarepta. J. M. K. (Krueger) is a principal investigator for clinical trials sponsored by Novartis Gene Therapies, Inc., Scholar Rock, and Genentech-Roche. J. A. P. has served as an investigator on clinical trials for Biogen, Novartis, PTC Therapeutics, and Scholar Rock, and has served in advisory capacity for Biogen, Scholar Rock, Genentech Roche, and Novartis. P. B. S. has served as a consultant for Alexion, Biogen, Genentech, Novartis Gene Therapies, Inc., and Sarepta, and has served as a speaker for Alexion, Biogen, Genentech, Grifols, Novartis Gene Therapies, Inc., and PTC Therapeutics. S. K. is an employee of Novartis Gene Therapies, Inc., and receives consulting fees from UCB Pharma, Karuna Therapeutics, Worldwide Clinical Trials, CPC Clinical Research, Zosano Pharmaceuticals, PharPoint Research, and Nesos. S. T.-W. is an employee of Novartis Gene Therapies, Inc., and owns Novartis stock or other equities. B.E.M. is an employee of Translational Medicine, Novartis Institutes for BioMedical Research (Cambridge) and owns Novartis stock or other equities. T.A.M. is an employee of Novartis Gene Therapies, Inc., and owns Novartis stock or other equities.

Additional information

Supplementary information The online version contains supplementary material available at <https://doi.org/10.1038/s41591-022-01866-4>.

Correspondence and requests for materials should be addressed to Kevin A. Strauss.

Peer review information *Nature Medicine* thanks Susan Matesanz, Charlotte Sumner, Victor Volovici, and the other, anonymous, reviewer(s) for their contribution to the peer review of this work. Primary Handling editor: Jerome Staal, in collaboration with the Nature Medicine team

Reprints and permissions information is available at www.nature.com/reprints.

Reporting Summary

Nature Research wishes to improve the reproducibility of the work that we publish. This form provides structure for consistency and transparency in reporting. For further information on Nature Research policies, see our [Editorial Policies](#) and the [Editorial Policy Checklist](#).

Statistics

For all statistical analyses, confirm that the following items are present in the figure legend, table legend, main text, or Methods section.

n/a Confirmed

- | | | |
|-------------------------------------|-------------------------------------|--|
| <input type="checkbox"/> | <input checked="" type="checkbox"/> | The exact sample size (n) for each experimental group/condition, given as a discrete number and unit of measurement |
| <input type="checkbox"/> | <input checked="" type="checkbox"/> | A statement on whether measurements were taken from distinct samples or whether the same sample was measured repeatedly |
| <input type="checkbox"/> | <input checked="" type="checkbox"/> | The statistical test(s) used AND whether they are one- or two-sided
<i>Only common tests should be described solely by name; describe more complex techniques in the Methods section.</i> |
| <input checked="" type="checkbox"/> | <input type="checkbox"/> | A description of all covariates tested |
| <input type="checkbox"/> | <input checked="" type="checkbox"/> | A description of any assumptions or corrections, such as tests of normality and adjustment for multiple comparisons |
| <input type="checkbox"/> | <input checked="" type="checkbox"/> | A full description of the statistical parameters including central tendency (e.g. means) or other basic estimates (e.g. regression coefficient) AND variation (e.g. standard deviation) or associated estimates of uncertainty (e.g. confidence intervals) |
| <input type="checkbox"/> | <input checked="" type="checkbox"/> | For null hypothesis testing, the test statistic (e.g. F , t , r) with confidence intervals, effect sizes, degrees of freedom and P value noted
<i>Give P values as exact values whenever suitable.</i> |
| <input checked="" type="checkbox"/> | <input type="checkbox"/> | For Bayesian analysis, information on the choice of priors and Markov chain Monte Carlo settings |
| <input checked="" type="checkbox"/> | <input type="checkbox"/> | For hierarchical and complex designs, identification of the appropriate level for tests and full reporting of outcomes |
| <input checked="" type="checkbox"/> | <input type="checkbox"/> | Estimates of effect sizes (e.g. Cohen's d , Pearson's r), indicating how they were calculated |

Our web collection on [statistics for biologists](#) contains articles on many of the points above.

Software and code

Policy information about [availability of computer code](#)

Data collection

Data analysis

For manuscripts utilizing custom algorithms or software that are central to the research but not yet described in published literature, software must be made available to editors and reviewers. We strongly encourage code deposition in a community repository (e.g. GitHub). See the Nature Research [guidelines for submitting code & software](#) for further information.

Data

Policy information about [availability of data](#)

All manuscripts must include a [data availability statement](#). This statement should provide the following information, where applicable:

- Accession codes, unique identifiers, or web links for publicly available datasets
- A list of figures that have associated raw data
- A description of any restrictions on data availability

A redacted version of the SPR1NT study protocol and a redacted version of the statistical analysis plan are available at ClinicalTrials.gov (NCT03505099). Novartis is committed to sharing clinical trial data with external researchers and has been doing so voluntarily since 2014. Novartis is committed to sharing, upon requests from qualified external researchers and subsequent approval by an independent review panel based upon scientific merit, anonymized patient-level and study-level clinical trial data, and redacted clinical study reports, for medicines and indications approved in the United States and Europe after the respective study is accepted for publication. All data provided are anonymized to respect the privacy of patients who have participated in the trial in line with applicable laws and regulations. This trial data availability is according to the criteria and process described on www.clinicalstudydatarequest.com.

Field-specific reporting

Please select the one below that is the best fit for your research. If you are not sure, read the appropriate sections before making your selection.

Life sciences Behavioural & social sciences Ecological, evolutionary & environmental sciences

For a reference copy of the document with all sections, see [nature.com/documents/nr-reporting-summary-flat.pdf](https://www.nature.com/documents/nr-reporting-summary-flat.pdf)

Life sciences study design

All studies must disclose on these points even when the disclosure is negative.

Sample size	This study was designed to have >90% power with $\alpha = 0.025$ to detect a significant difference in independent sitting using a one-sided exact binomial test based on a sample size of ≥ 14 patients into the ITT population as well as assumptions based on a matched PNCR data set and START study data. Formal testing for the primary and secondary efficacy endpoints was performed using a hierarchical approach to protect against Type I error as follows. First, the primary endpoint of independent sitting ≥ 30 seconds was assessed. If the analysis of the primary endpoint was determined to be statistically significant ($P < 0.025$), then formal testing of the first secondary endpoint, percentage of patients that survived and did not require permanent ventilation, was conducted. If the analysis of this secondary endpoint was determined to be statistically significant ($P < 0.05$), then formal testing of the second secondary endpoint, maintenance of weight ≥ 3 rd WHO percentile without feeding support at any visit up to 18 months of age, was conducted.
Data exclusions	No data were excluded from the analyses.
Replication	This was an open-label single-arm study that included efficacy and safety assessments for each patient. Assessments were repeated for each patient at the relevant follow-up visit as per protocol, but were not replicated for each patient at each time point.
Randomization	This was an open-label single-arm study. Patients were not randomized to study groups.
Blinding	This study was an open-label design and no blinding was used.

Reporting for specific materials, systems and methods

We require information from authors about some types of materials, experimental systems and methods used in many studies. Here, indicate whether each material, system or method listed is relevant to your study. If you are not sure if a list item applies to your research, read the appropriate section before selecting a response.

Materials & experimental systems

n/a	Included in the study
<input checked="" type="checkbox"/>	<input type="checkbox"/> Antibodies
<input checked="" type="checkbox"/>	<input type="checkbox"/> Eukaryotic cell lines
<input checked="" type="checkbox"/>	<input type="checkbox"/> Palaeontology and archaeology
<input checked="" type="checkbox"/>	<input type="checkbox"/> Animals and other organisms
<input type="checkbox"/>	<input checked="" type="checkbox"/> Human research participants
<input type="checkbox"/>	<input checked="" type="checkbox"/> Clinical data
<input checked="" type="checkbox"/>	<input type="checkbox"/> Dual use research of concern

Methods

n/a	Included in the study
<input checked="" type="checkbox"/>	<input type="checkbox"/> ChIP-seq
<input checked="" type="checkbox"/>	<input type="checkbox"/> Flow cytometry
<input checked="" type="checkbox"/>	<input type="checkbox"/> MRI-based neuroimaging

Human research participants

Policy information about [studies involving human research participants](#)

Population characteristics

Infants eligible for enrollment in the two-copy cohort of SPR1NT must have been genetically diagnosed with presymptomatic spinal muscular atrophy (SMA) with two copies of SMN2, ≤ 6 weeks (≤ 42 days) of age at the time of treatment, were able to tolerate thin liquids as demonstrated through a formal bedside swallowing test, had a baseline peroneal nerve to tibialis anterior compound muscle action potential (CMAP) value of ≥ 2 mV, were at a gestational age of 35 to 42 weeks, were up-to-date on childhood vaccinations that include palivizumab prophylaxis (also known as Synagis®) to prevent respiratory syncytial virus infections, able and willing to follow the Consensus Statement for Standard of Care in Spinal Muscular Atrophy and parent(s)/legal guardian(s) willing and able to complete the informed consent process and comply with study procedures and visit schedule. Genetic diagnoses had to be obtained from an acceptable newborn or prenatal screening test method.

Fourteen presymptomatic infants with genetically confirmed SMA and two SMN2 copies (71% female) were enrolled and treated with onasemnogene abeparvovec. Children in the two-copy cohort were born between 36 and 41 (median 38) gestational weeks, with a median weight of 3.3 kg (range, 2.72–4.35 kg). Eleven children were born prior to a gestational age at birth of <40 weeks (less than full-term gestation), and one patient had a gestational age of <37 weeks. All 14 children had biallelic SMN1 deletions and two SMN2 copies (no c.859C>G modifier variants) detected presymptotically through either

prenatal screening (n = 5, 36%) or newborn screening (n = 9, 64%). The nine children referred by newborn screening had a confirmed molecular diagnosis at median age 8 days (range, 1–14 days).

Recruitment

Infants eligible for enrollment in the two-copy cohort of SPRINT must have been genetically diagnosed with presymptomatic spinal muscular atrophy (SMA) with two copies of SMN2, ≤ 6 weeks (≤ 42 days) of age at the time of treatment, were able to tolerate thin liquids as demonstrated through a formal bedside swallowing test, had a baseline peroneal nerve to tibialis anterior compound muscle action potential (CMAP) value of ≥ 2 mV, were at a gestational age of 35 to 42 weeks, were up-to-date on childhood vaccinations that include palivizumab prophylaxis (also known as Synagis®) to prevent respiratory syncytial virus infections, able and willing to follow the Consensus Statement for Standard of Care in Spinal Muscular Atrophy and parent(s)/legal guardian(s) willing and able to complete the informed consent process and comply with study procedures and visit schedule. Genetic diagnoses had to be obtained from an acceptable newborn or prenatal screening test method.

SMA is a rare disease, and the study was conducted at specialized tertiary care centers. There were no active recruitment efforts that would create bias.

Ethics oversight

The study was approved by institutional review boards at all participating institutions (Advarra Center for IRB Intelligence, Nationwide Children's Hospital; UCLA Medical Center IRB #3, David Geffen School of Medicine at University of California Los Angeles; Nemours Office of Human Subjects Protection, Nemours Children's Clinic; Columbia University Medical Center IRB, Columbia University Medical Center; Advarra Center for IRB Intelligence, Massachusetts General Hospital; Children's Hospital of Eastern Ontario Research Ethics Board, Children's Hospital of Eastern Ontario; Sydney Children's Hospitals Network Human Research Ethics Committee, Sydney Children's Hospital; University of Pennsylvania IRB, Clinic for Special Children; Tokyo Women's Medical University IRB, Tokyo Women's Medical University Hospital; The Dubowitz Neuromuscular Centre IRB, University College London; The Neuromuscular Center of Liège, CHU & University of Liège), and written informed consent was obtained from parents or legal guardians of enrolled patients.

Note that full information on the approval of the study protocol must also be provided in the manuscript.

Clinical data

Policy information about [clinical studies](#)

All manuscripts should comply with the ICMJE [guidelines for publication of clinical research](#) and a completed [CONSORT checklist](#) must be included with all submissions.

Clinical trial registration

ClinicalTrials.gov NCT03505099, registration date April 23, 2018.

Study protocol

A redacted version of the SPRINT study protocol and a redacted version of the statistical analysis plan are available at [ClinicalTrials.gov](#).

Data collection

Data collection began between September 18, 2018, and July 9, 2019, at the time of onasemnogene abeparvovec infusion, and the patients were followed for 18 months. Data collection was undertaken at 16 sites in six countries (Australia, Belgium, Canada, Japan, United Kingdom, and the United States of America).

Outcomes

The primary efficacy endpoint was the ability to sit independently for ≥ 30 seconds at any visit up to 18 months of age, as stipulated by item #26 from the gross motor subtest of the Bayley-III Scales of Infant and Toddler Development (BSID). Secondary endpoints were survival at 14 months of age, defined as the avoidance of death or requirement of permanent ventilation (tracheostomy or ≥ 16 hours daily respiratory assistance for ≥ 14 consecutive days in the absence of an acute reversible illness, excluding perioperative ventilation) and the ability to maintain body weight at or greater than the 3rd percentile at all visits without the need for feeding support at any visit up to 18 months of age. Exploratory endpoints included achievement of motor milestones as assessed by WHO Multicentre Growth Reference Study (WHO-MGRS) and BSID Version 3 Gross Motor criteria, Children's Hospital of Philadelphia Infant Test of Neuromuscular Disorders (CHOP INTEND) scores, and scores on the BSID gross and fine motor subtests. Videos demonstrating developmental milestones meeting WHO and BSID criteria (as part of clinical evaluation at study visits or submitted by parent(s)/legal guardian(s) at any time during the study) were reviewed by an independent, central reviewer for unbiased assessment and confirmation of developmental milestone achievement. Patients who achieved three consecutive CHOP INTEND scores ≥ 58 did not continue CHOP INTEND assessments.

Primary and secondary efficacy analyses were performed for patients with biallelic SMN1 deletions and two copies of SMN2 without the SMN2 gene modifier variant (c.859G>C), which is associated with a less severe clinical course, who were included in the ITT population. Primary and secondary outcomes were compared with a cohort of patients from the PNCr natural history data set described (all patients with SMA type 1, two copies of SMN2, age at SMA onset ≤ 6 months, and age at SMA diagnosis ≤ 2 years; the SMN2 modifier mutation [c.859G>C] was not assessed in the PNCr study cohort.). As a substitute for comparison against a rate of zero, we assumed that no more than 0.1% of untreated patients with SMA type 1 achieved independent sitting without support for ≥ 30 seconds up to 18 months of age or achieved the ability to maintain weight at or above the 3rd percentile without the need for non-oral/mechanical feeding support up to 18 months of age, and 26% of patients survived at 14 months according to age-matched natural history data. This study was designed to have $>90\%$ power with $\alpha = 0.025$ to detect a significant difference in independent sitting using a one-sided exact binomial test based on a sample size of ≥ 14 patients into the ITT population as well as assumptions based on a matched PNCr data set and START study data. Formal testing for the primary and secondary efficacy endpoints was performed using a hierarchical approach to protect against Type I error as follows. First, the primary endpoint of independent sitting ≥ 30 seconds was assessed. If the analysis of the primary endpoint was determined to be statistically significant ($P < 0.025$), then formal testing of the first secondary endpoint, percentage of patients that survived and did not require permanent ventilation, was conducted. If the analysis of this secondary endpoint was determined to be statistically significant ($P < 0.05$), then formal testing of the second secondary endpoint, maintenance of weight ≥ 3 rd WHO percentile without feeding support at any visit up to 18 months of age, was conducted.