

ARTICLE

Received 7 Dec 2011 | Accepted 7 Feb 2012 | Published 13 Mar 2012

DOI: 10.1038/ncomms1735

# Lipid storage disorders block lysosomal trafficking by inhibiting a TRP channel and lysosomal calcium release

Dongbiao Shen<sup>1</sup>, Xiang Wang<sup>1,\*</sup>, Xinran Li<sup>1,\*</sup>, Xiaoli Zhang<sup>1</sup>, Zepeng Yao<sup>1</sup>, Shannon Dibble<sup>1</sup>, Xian-ping Dong<sup>1</sup>, Ting Yu<sup>2</sup>, Andrew P. Lieberman<sup>2</sup>, Hollis D. Showalter<sup>3</sup> & Haoxing Xu<sup>1</sup>

Lysosomal lipid accumulation, defects in membrane trafficking and altered Ca<sup>2+</sup> homeostasis are common features in many lysosomal storage diseases. Mucopolysaccharidase 1 (TRPML1) is the principle Ca<sup>2+</sup> channel in the lysosome. Here we show that TRPML1-mediated lysosomal Ca<sup>2+</sup> release, measured using a genetically encoded Ca<sup>2+</sup> indicator (GCaMP3) attached directly to TRPML1 and elicited by a potent membrane-permeable synthetic agonist, is dramatically reduced in Niemann–Pick (NP) disease cells. Sphingomyelins (SMs) are plasma membrane lipids that undergo sphingomyelinase (SMase)-mediated hydrolysis in the lysosomes of normal cells, but accumulate distinctively in lysosomes of NP cells. Patch-clamp analyses revealed that TRPML1 channel activity is inhibited by SMs, but potentiated by SMases. In NP-type C cells, increasing TRPML1's expression or activity was sufficient to correct the trafficking defects and reduce lysosome storage and cholesterol accumulation. We propose that abnormal accumulation of luminal lipids causes secondary lysosome storage by blocking TRPML1- and Ca<sup>2+</sup>-dependent lysosomal trafficking.

<sup>1</sup> Department of Molecular, Cellular and Developmental Biology, University of Michigan, 3089 Natural Science Building (Kraus), 830 North University, Ann Arbor, 48109, USA. <sup>2</sup> Department of Pathology, University of Michigan Medical School, Ann Arbor, 48109, USA. <sup>3</sup> Vahlteich Medicinal Chemistry Core, Department of Medicinal Chemistry, University of Michigan, Ann Arbor, 48109, USA. \*These authors contributed equally to the work. Correspondence and requests for materials should be addressed to H.X. (email: haoxingx@umich.edu).

The lysosome, which serves as the cell's recycling centre, can mediate the hydrolase-based degradation of a variety of biomaterials, including proteins, lipids and membranes<sup>1</sup>. Most lysosomal storage diseases (LSDs), of which more than 50 are known, are due to the defective activities of specific lysosomal enzymes, which result in the lysosomal accumulation of specific substrates<sup>2</sup>. For instance, in Niemann–Pick (NP) type A and B diseases (NPA and NPB), sphingomyelins (SMs) accumulate in lysosomes due to insufficient activity of acid SMase (aSMase) (Supplementary Fig. S1)<sup>3</sup>; similarly, insufficient aSMase activity and SM accumulation occur in NP type C (NPC), where the genetic defect occurs in components of an intracellular cholesterol/lipid trafficking pathway<sup>3,4</sup>. Interestingly, regardless of the nature of the primary undigested metabolites, common cellular defects are seen in a spectrum of LSDs<sup>5</sup>. For example, defects in lipid trafficking (the exit of lipids from the late endosome and lysosome) and autophagosome–lysosome fusion are commonly observed in almost all sphingolipidoses, including NPA, NPB and NPC<sup>2,6</sup>. In addition, altered  $\text{Ca}^{2+}$  and  $\text{Fe}^{2+}$  homeostasis are also common factors in these LSDs<sup>2,5,7</sup>. Thus, it is likely that the common trafficking machinery is impaired in LSDs with unrelated origins or primary defects. One intriguing hypothesis is that the primary accumulated materials cause a sort of 'lysosome stress,' which impairs common biochemical and/or signalling pathways in the lysosome, similar to the way unfolded proteins cause 'ER stress' to trigger an 'unfolded protein response'<sup>2,5</sup>.

Cells that lack mucolipin transient receptor potential (TRP) channel 1 (TRPML1) exhibit lysosomal defects similar to those seen in NP cells: defective autophagosome–lysosome fusion or lysosome reformation, abnormal lipid trafficking and altered  $\text{Ca}^{2+}$  and  $\text{Fe}^{2+}$  homeostasis<sup>8–15</sup>. Furthermore, mutations in the human *Trpml1* gene cause mucopolipidosis type IV (ML4) LSD, which exhibits membrane trafficking defects and excessive lysosomal storage<sup>16–18</sup>. TRPML1 is a ubiquitously expressed  $\text{Fe}^{2+}$  and  $\text{Ca}^{2+}$  dually permeable channel predominantly localized in late endosomes and lysosomes (LEs)<sup>11,13,19–21</sup>. TRPML1 is specifically activated by phosphatidylinositol 3,5-bisphosphate (PI(3,5)P<sub>2</sub>), an LEL-localized low-abundance phosphoinositide<sup>14</sup>. In addition, both TRPML1-lacking and PI(3,5)P<sub>2</sub>-deficient cells exhibit defects in LEL-to-Golgi retrograde trafficking and autophagosome–lysosome fusion<sup>8,15,22,23</sup>, suggesting that the TRPML1-PI(3,5)P<sub>2</sub> system represents a common signalling pathway essential for late endocytic trafficking.

Owing to the high degree of similarity in lysosomal defects, we hypothesized that TRPML1-PI(3,5)P<sub>2</sub> signalling is compromised in NPs and many other LSDs. In this study, we measured lysosomal  $\text{Ca}^{2+}$  release with lysosome-targeted, genetically encoded  $\text{Ca}^{2+}$  indicators and found that TRPML1-mediated lysosomal  $\text{Ca}^{2+}$  release was compromised in NPC and NPA cells. Patch-clamp analyses demonstrated that TRPML1 channel activity was inhibited by micromolar concentrations of SMs, but potentiated by SM-hydrolysing enzyme SMases. In NPC cells, increasing TRPML1's expression or activity was found to be capable of correcting the trafficking defects and decrease cholesterol accumulation. We conclude that SMs are negative regulators of TRPML1 channels under physiological conditions, and that abnormal accumulation of SMs in the lysosome lumen blocks  $\text{Ca}^{2+}$ -dependent membrane trafficking by directly inhibiting TRPML1.

## Results

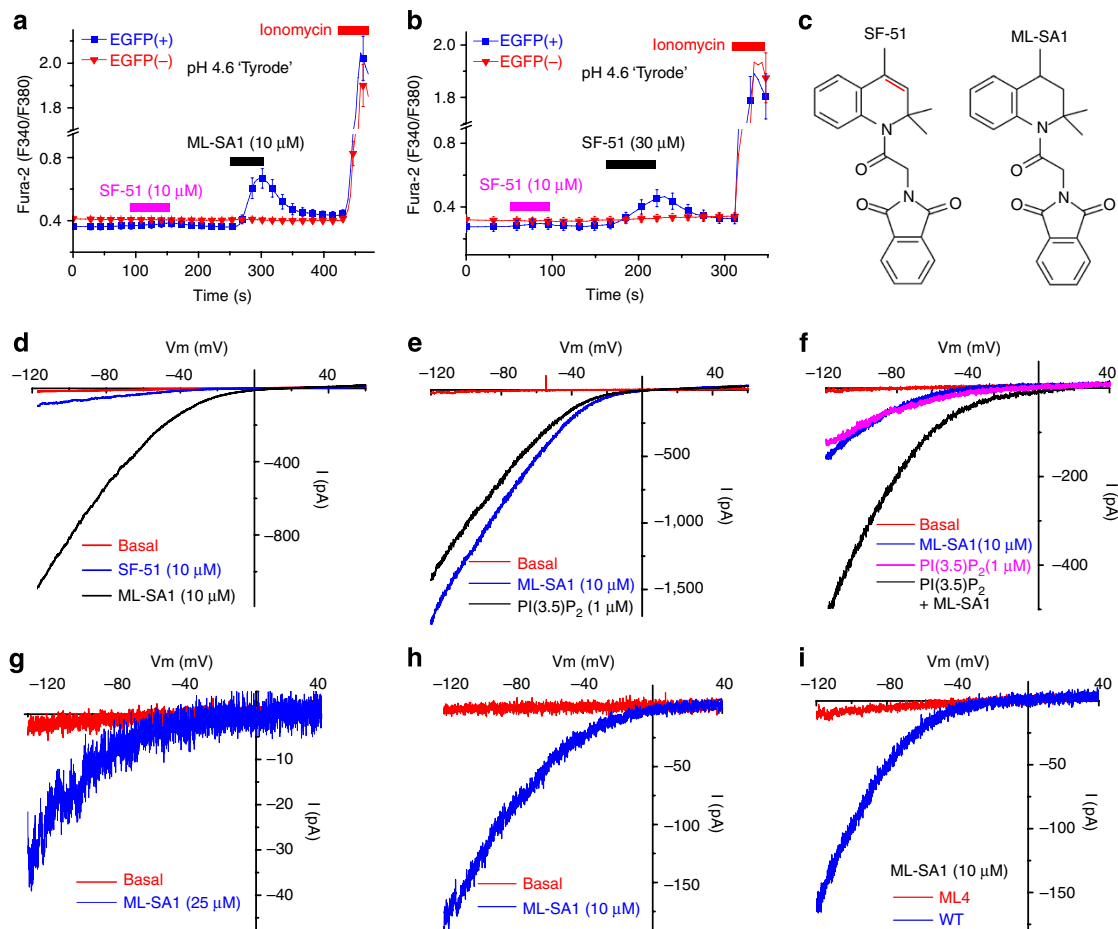
**Identification of a potent synthetic agonist for TRPML1.** A recent high-throughput screen identified 15 small-molecule chemical compounds (SF compounds) that can activate recombinant surface-expressed TRPML3<sup>21</sup>. TRPML1 is primarily localized on the membranes of LELs<sup>13</sup>. Using whole-endolysosome patch-clamp recordings<sup>11,14</sup>, we found that several SF compounds also weakly activated whole-endolysosome TRPML1-mediated currents ( $I_{\text{TRPML1}}$  or  $I_{\text{ML1}}$ , data not shown). In HEK293T cells transfected with

surface-expressed mutant TRPML1 channels (TRPML1-L<sup>15</sup>L/AA-L<sup>577</sup>L/AA, abbreviated as ML1-4A<sup>9,21</sup>), one of the SF compounds, SF-51<sup>21</sup>, induced small cytosolic  $\text{Ca}^{2+}$  ( $[\text{Ca}^{2+}]_{\text{cyt}}$ ) increases (measured with Fura-2 ratios; Fig. 1a,b), and activated small but significant inwardly rectifying whole-cell currents ( $I_{\text{ML1-4A}}$ ; Fig. 1d).

By conducting a Fura-2-based low-throughput screen for more potent TRPML1 agonists, we identified a SF-51-related compound (Fig. 1c for the chemical structures; Mucolipin Synthetic Agonist 1 or ML-SA1) that could induce significant  $[\text{Ca}^{2+}]_{\text{cyt}}$  increases in HEK293 cells stably or transiently expressing ML1-4A (Fig. 1a). In electrophysiological assays, ML-SA1 robustly activated whole-cell  $I_{\text{ML1-4A}}$  (Fig. 1d) and whole-endolysosome  $I_{\text{ML1}}$  (Fig. 1e). ML-SA1 also activated whole-cell  $I_{\text{TRPML2}}$  and  $I_{\text{TRPML3}}$ , but not six other related channels (Supplementary Fig. S2). ML-SA1 (10  $\mu\text{M}$ ) activation of whole-endolysosome  $I_{\text{ML1}}$  was comparable to the effect of the endogenous TRPML agonist PI(3,5)P<sub>2</sub> (1  $\mu\text{M}$ ; Fig. 1e), and these agonists were synergistic with each other (Fig. 1f). ML-SA1 activated an endogenous whole-endolysosome TRPML-like current ( $I_{\text{ML-L}}$ ) in all mammalian cell types that we investigated, including Chinese Hamster Ovary (CHO) (Fig. 1g), Cos-1, HEK293, skeletal muscle, pancreatic  $\beta$  and macrophage cells (Fig. 1h). ML-SA1 activated whole-endolysosome  $I_{\text{ML-L}}$  in wild-type (WT; ML1<sup>+/+</sup>), but not ML4 (ML1<sup>-/-</sup>) human fibroblasts (Fig. 1i), suggesting that although ML-SA1 targets all three TRPMLs, the expression levels of TRPML2 and TRPML3 are very low, and TRPML1 is the predominant lysosomal TRPML channel in this cell type. Thus, we have identified a reasonably specific and potent agonist that can be a useful chemical tool for studying the functions of TRPMLs, especially TRPML1.

**A lysosome-targeted genetically encoded  $\text{Ca}^{2+}$  indicator.** To measure lysosomal  $\text{Ca}^{2+}$  release in intact cells, we engineered GCaMP3, a single-wavelength genetically encoded  $\text{Ca}^{2+}$  indicator<sup>24</sup>, to the cytoplasmic amino terminus of TRPML1 (Fig. 2a). When transfected into HEK293T, CHO or Cos-1 cell lines, GCaMP3-TRPML1 (GCaMP3-ML1) was mainly localized in the Lamp-1 and LysoTracker-positive compartments, that is, LEL (Fig. 2b,c). To determine the specificity of the GCaMP3-ML1 fluorescence signal, we tested a variety of  $\text{Ca}^{2+}$  release reagents and found that GCaMP3 fluorescence ( $F_{470}$ ) responded preferentially and reliably to lysosome-acting  $\text{Ca}^{2+}$ -mobilization reagents ( $\Delta F/F_0 = 0.2–1$ ), including glycyl-L-phenylalanine 2-naphthylamide (GPN, a Cathepsin C substrate that induces osmotic lysis of lysosomes; Fig. 2d) and bafilomycin A1 (Baf-A1, a V-ATPase inhibitor)<sup>25</sup>. In a subset of cells, GCaMP3 also responded to large ( $\Delta F/F_0 > 2$ )  $\text{Ca}^{2+}$  increases triggered by thapsigargin (targeting the endoplasmic reticulum (ER)  $\text{Ca}^{2+}$  store; Fig. 2d), which may presumably spread to close proximity of lysosomes. In the majority of the cells, however, TG failed to significantly increase GCaMP3 fluorescence (Fig. 2d), suggesting that small ER  $\text{Ca}^{2+}$  release was not detected by GCaMP3-ML1. Taken together, GCaMP3-ML1 readily and preferentially detects juxta-lysosomal  $\text{Ca}^{2+}$  increases.

In GCaMP3-ML1-transfected CHO (Fig. 3a,b), HEK293T and Cos-1 cell lines, application of ML-SA1 (20  $\mu\text{M}$ ) induced rapid increases in GCaMP3 fluorescence ( $\Delta F/F_0 = 0.45 \pm 0.05$ ,  $n = 77$  cells; Fig. 3a,k) in the presence of low external  $\text{Ca}^{2+}$  (nominally free  $\text{Ca}^{2+}$  + 1 mM EGTA; free  $\text{Ca}^{2+}$  estimated to be <10 nM). By contrast, no significant increase in GCaMP3 fluorescence ( $\Delta F/F_0 = 0.03 \pm 0.01$ ,  $n = 32$  cells; Fig. 3c,d and k) was observed in cells transfected with a plasmid carrying GCaMP3 fused to a non-conducting pore mutant of TRPML1<sup>8,14</sup> (GCaMP3-ML1-KK). Both GPN and Baf-A1 largely abolished ML-SA1-induced  $\text{Ca}^{2+}$  responses (Fig. 3e–k). By contrast, ML-SA1-induced  $\text{Ca}^{2+}$  response was mostly intact in TG-treated cells (Fig. 3k). Collectively, these results suggest that ML-SA1 activated endolysosomal TRPML1



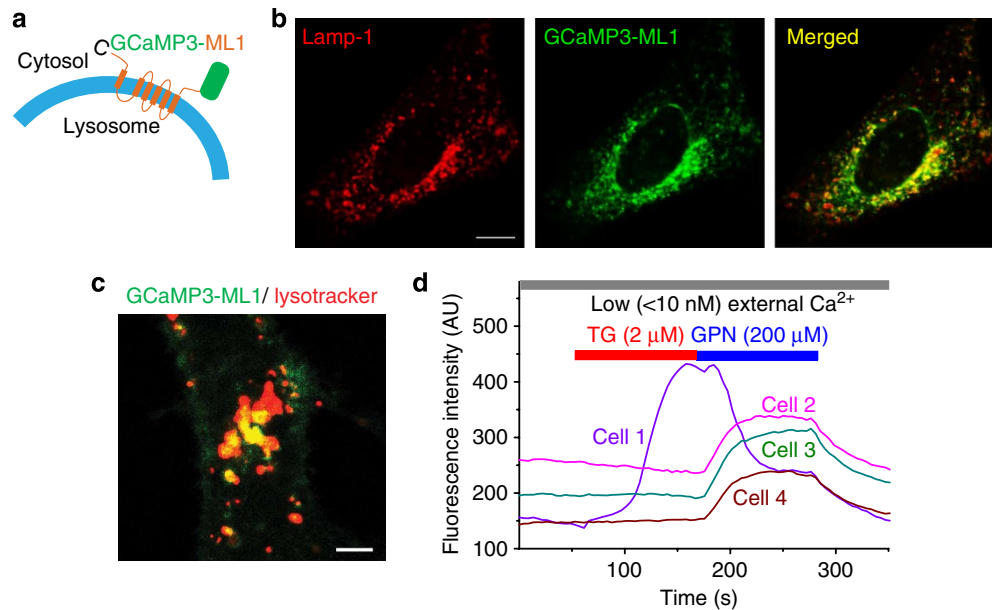
**Figure 1 | Activation of TRPML1 by small-molecule synthetic agonists.** (a) ML-SA1 induced increases in cytosolic  $[Ca^{2+}]_i$ , as measured by the Fura-2 ratio ( $F_{340}/F_{380}$ ) in HEK293T cells expressing TRPML1-L<sup>15</sup>L/AA-L<sup>577</sup>L/AA (ML1-4A) at low pH (pH 4.6) external solution. SF-51 (10  $\mu$ M) induced much smaller responses in the same cells. (b) SF-51 (30  $\mu$ M) induced increases in cytosolic  $[Ca^{2+}]_i$  in ML1-4A-expressing HEK293T cells at low pH external solution. (c) Chemical structures of SF-51 and ML-SA1. The difference between SF-51 and ML-SA1 is highlighted in red. (d) Activation of whole-cell currents by SF-51 and ML-SA1 in ML1-4A-expressing HEK293T cells. ML1-4A-mediated current ( $I_{ML1-4A}$ ) was elicited by repeated voltage ramps (-140 to +140 mV; 400 ms) with a 4-s interval between ramps. Only a portion of the voltage protocol is shown; holding potential = 0 mV. (e) Activation of whole-endolysosome  $I_{ML1}$  by ML-SA1 and PI(3,5)P<sub>2</sub>. Enlarged vacuoles/endolysosomes were isolated from vacuolin-treated HEK293 cells stably expressing ML1-4A. ML-SA1 and PI(3,5)P<sub>2</sub> were applied to the cytosolic sides of the isolated vacuoles. The pipette (luminal) solution was a standard external (Tyrode's) solution adjusted to pH 4.6; the bath (internal/cytoplasmic) solution was a K<sup>+</sup>-based solution (140 mM K<sup>+</sup>-gluconate). Note that the inward current indicates cations flowing out of the endolysosome. (f) Synergistic activation of whole-endolysosome  $I_{ML1}$  by ML-SA1 and PI(3,5)P<sub>2</sub> in human fibroblasts.  $I_{ML1}$  was activated by PI(3,5)P<sub>2</sub> (1  $\mu$ M) and ML-SA1 (10  $\mu$ M); coapplication of PI(3,5)P<sub>2</sub> and ML-SA1 further increased  $I_{ML1}$ . (g) ML-SA1 activated endogenous whole-endolysosome ML-like currents ( $I_{ML-L}$ ) in CHO cells. (h) ML-SA1 activated whole-endolysosome  $I_{ML-L}$  in mouse primary macrophages. (i) ML-SA1 activated whole-endolysosome  $I_{ML1}$  in WT (ML1<sup>+/+</sup>), but not ML4 (ML1<sup>-/-</sup>), human fibroblasts. For panels a and b, the responses were averaged for 20–40 cells from one representative experiment; data are presented as the mean  $\pm$  s.e.m.

to induce  $Ca^{2+}$  release from lysosomes. Thus, we have established a robust  $Ca^{2+}$  imaging assay to measure TRPML1-mediated lysosomal  $Ca^{2+}$  release.

**Reduced TRPML1-mediated lysosomal  $Ca^{2+}$  release in NPC cells.** Next, we investigated whether TRPML1-mediated lysosomal  $Ca^{2+}$  release is altered in NPC cells. We chose an easy-to-transfect cellular model of NPC, NPC (NPC1<sup>-/-</sup>) CHO cells, which exhibit all the hallmark features of NPC disease<sup>26,27</sup>. WT CHO cells transfected with GCaMP3-ML1 exhibited large TRPML1-mediated lysosomal  $Ca^{2+}$  release (Fig. 4a,l). In contrast, NPC CHO cells exhibited much smaller TRPML1-mediated  $Ca^{2+}$  release with a ~75% reduction compared with WT controls (Fig. 4b,l). GCaMP3-ML1 was still mainly colocalized with Lamp-1 in NPC cells (Fig. 4c). In addition, the expression levels of GCaMP3-ML1, as estimated from the maximal fluorescence intensity induced by ionomycin, were compara-

ble for WT and NPC cells (Fig. 4d). A previous study reported that lysosomal  $Ca^{2+}$  stores are compromised in NPC cells<sup>25</sup>. However, we found that GPN-induced GCaMP3-ML1 increases were comparable for WT and NPC cells (Fig. 4e). Likewise, GPN-induced and NH<sub>4</sub>Cl-induced Fura-2 responses were also comparable in non-transfected WT and NPC cells (Fig. 4f,g). Furthermore, TRPML1-mediated, but not GPN-induced lysosomal  $Ca^{2+}$  release, was also reduced in GCaMP3-transfected NPC human fibroblasts compared with WT cells (Fig. 4h). Collectively, these results suggest that TRPML1-mediated lysosomal  $Ca^{2+}$  release is selectively reduced in NPC cells.

NPC-like cellular phenotypes can be pharmacologically induced with a small-molecule drug U18666A<sup>28</sup>. After incubating GCaMP3-ML1-transfected WT CHO cells with U18666A (2  $\mu$ g ml<sup>-1</sup>) for 16–20 h, cells exhibited significant increases in cholesterol level as detected by filipin staining<sup>4</sup> (Fig. 4i), and sphingomyelin (SM)



**Figure 2 | A lysosome-targeted genetically encoded Ca<sup>2+</sup> indicator.** (a) GCaMP3-TRPML1 (GCaMP3-ML1) fusion strategy. GCaMP3 is fused to the N-terminus of TRPML1. (b) Colocalization of GCaMP3-ML1 fluorescence with Lamp-1 in HEK293T cells expressing both GCaMP3-ML1 and Lamp-1-mCherry. Scale bar = 5 μm. (c) Colocalization of GCaMP3-ML1 fluorescence with LysoTracker in GCaMP3-ML1-expressing HEK293T cells. Scale bar = 2 μm. (d) Preferential detection of Ca<sup>2+</sup> release from lysosome stores by GCaMP3-ML1 in GCaMP3-ML1-transfected Cos-1 cells. ER and lysosome Ca<sup>2+</sup> releases were triggered by thapsigargin (TG, 2 μM) and GPN (200 μM), respectively, in low (nominally free Ca<sup>2+</sup> + 1 mM EGTA; free [Ca<sup>2+</sup>] estimated to be <10 nM) external [Ca<sup>2+</sup>]. All cells responded to GPN; only one out of four cells responded to TG.

level as detected by lysenin staining (Fig. 4j). U18666A-treated cells exhibited a ~70% reduction in TRPML1-mediated lysosomal Ca<sup>2+</sup> release (Fig. 4k,l). Conversely, drug treatment failed to result in noticeable changes in GPN-induced GCaMP3 responses (Fig. 4e) or Fura-2 Ca<sup>2+</sup> responses (Fig. 4f). Taken together, these results suggest a specific reduction of TRPML1-mediated lysosomal Ca<sup>2+</sup> release in pharmacologically induced NPC cells.

We next investigated the effect of NPC on endogenous Ca<sup>2+</sup> release using Fura-2 Ca<sup>2+</sup> imaging. In WT CHO cells, small but significant Ca<sup>2+</sup> increases were seen upon application of 100 μM ML-SA1 in low external Ca<sup>2+</sup> ( $\Delta$ Fura-2 = 0.08 ± 0.01,  $n$  = 89; Fig. 4m,o). In contrast, in NPC CHO cells, ML-SA1 failed to induce significant Ca<sup>2+</sup> responses ( $\Delta$ Fura-2 = 0.01 ± 0.002,  $n$  = 61; Fig. 4n,o). Cyclodextrin, a polysaccharide that reportedly alleviates NPC cellular phenotypes<sup>4</sup>, was found to partially restore ML-SA1-induced lysosomal Ca<sup>2+</sup> release (Supplementary Fig. S3). Finally, NPC1<sup>-/-</sup> mouse macrophages, one of the major cell types affected in NPC<sup>3</sup>, also exhibited a significant reduction in ML-SA1-induced lysosomal Ca<sup>2+</sup> release compared with WT cells (Fig. 4o and Supplementary Fig. S4). The ML-SA1-induced lysosomal Ca<sup>2+</sup> responses are most likely mediated by TRPML1, as demonstrated by the lack of response in ML1<sup>-/-</sup> macrophages (Fig. 4o and Supplementary Fig. S4). Collectively, the reduction in TRPML1-mediated lysosomal Ca<sup>2+</sup> release may be a general feature of most NPC cell types.

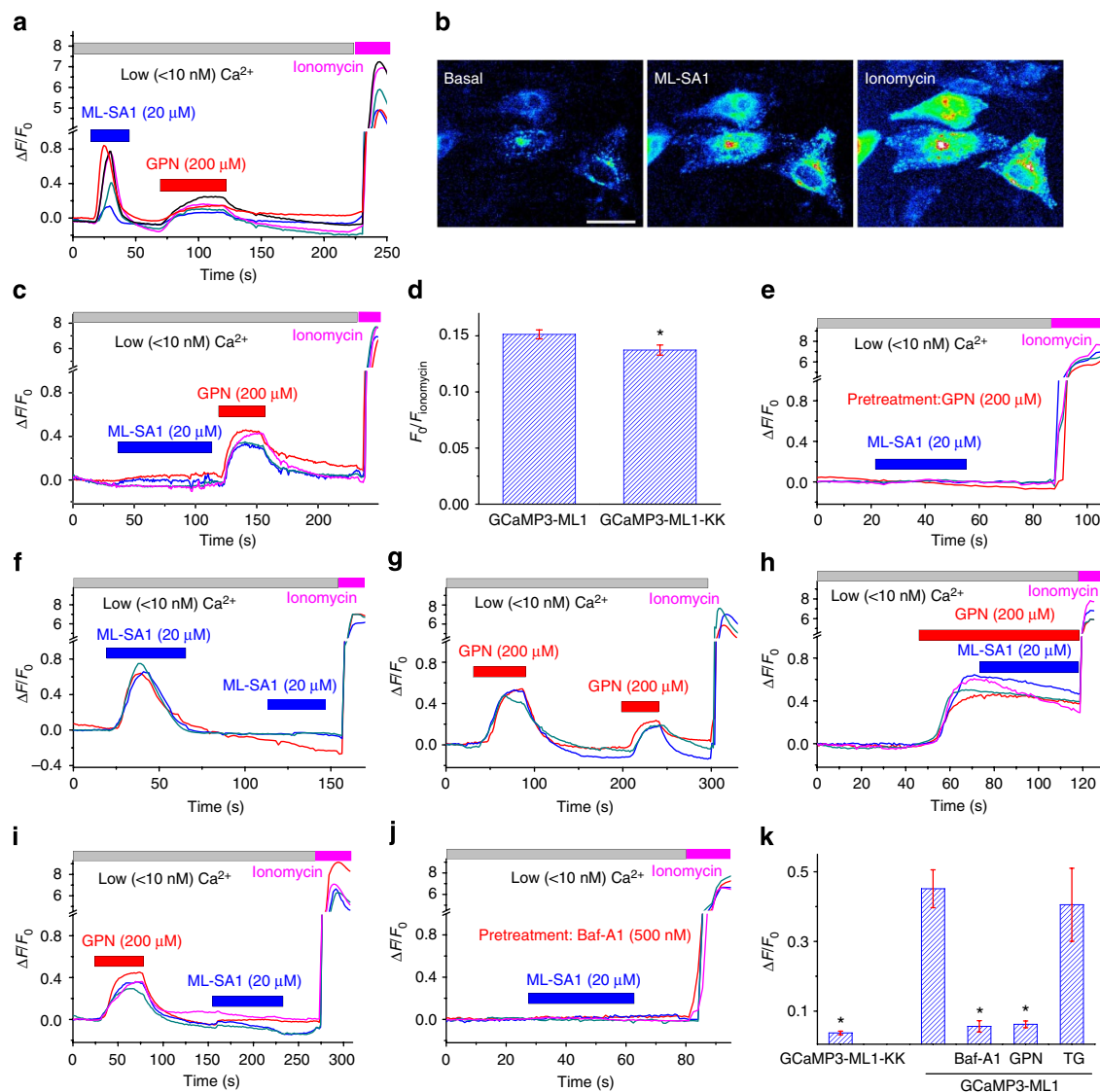
**Reduced TRPML1-mediated currents in NPC cell lysosomes.** We next investigated the effect of NPC on whole-endolysosome  $I_{ML1}$  in human fibroblasts. Compared with WT fibroblasts (Fig. 5a,c), much smaller ML-SA1-activated  $I_{ML1}$  was seen in NPC fibroblasts at three different concentrations of ML-SA1 (Fig. 5b,c). On average, whole-endolysosome  $I_{ML1}$  activated by 25 μM ML-SA1 was 75 ± 25 pA/pF ( $n$  = 8) for NPC cells, a ~70% reduction from the values observed for WT cells (442 ± 150 pA/pF;  $n$  = 6). Notably, the messenger RNA expression levels of *TRPML1-3* were not decreased in NPC cells (Fig. 5d). These results suggest that a reduction of whole-endolysosome  $I_{ML1}$

accounts for the reduced TRPML1-mediated Ca<sup>2+</sup> release observed in NPC cells.

**Inhibition of TRPML1 by SMs.** The reduced TRPML1-mediated lysosomal Ca<sup>2+</sup> release and  $I_{ML1}$  in the presence of normal *TRPML1* expression in NPC cells suggest tonic inhibition of TRPML1 by cytoplasmic and/or luminal factors. One possibility is that lipids accumulated in NPC lysosomes, such as cholesterol, SM, sphingosine and glycosphingolipids<sup>4,29</sup>, might directly inhibit TRPML1. To test this possibility, we performed whole-cell recordings in ML1-4A-expressing HEK293T cells. Under this configuration, the extracellular side is analogous to the luminal side (Supplementary Fig. S1), making it possible to study the effects of luminal lipids on  $I_{ML1-4A}$ . SMs, but not cholesterol or glycosphingolipids (data not shown), acutely inhibited SF-51- (Fig. 6a,d) or ML-SA1-activated  $I_{ML1-4A}$ . In contrast, SMs failed to inhibit  $I_{ML1-va}$ , a gain-of-function mutation that locks TRPML1 in the open state<sup>13</sup> (Fig. 6b,d). SMs can be hydrolysed into ceramide and phosphocholine by SMase (Supplementary Fig. S1). No significant inhibition was seen with ceramide (Fig. 6c,d) or phosphocholine (Fig. 6d). Sphingosine, a hydrolysed product of ceramide, potentiated  $I_{ML1-4A}$  (Fig. 6e).

The robust inhibition of  $I_{ML1-4A}$  by SMs, but not ceramide or phosphocholine, suggests that the activity of SMase may regulate  $I_{ML1-4A}$ . Indeed, bath application of SMases, but not heat-inactivated enzymes, significantly potentiated SF-51-activated  $I_{ML1-4A}$  (Fig. 6f-k), with the potentiation being more dramatic at acidic extracellular (luminal) pH than at neutral pH (Fig. 6k).

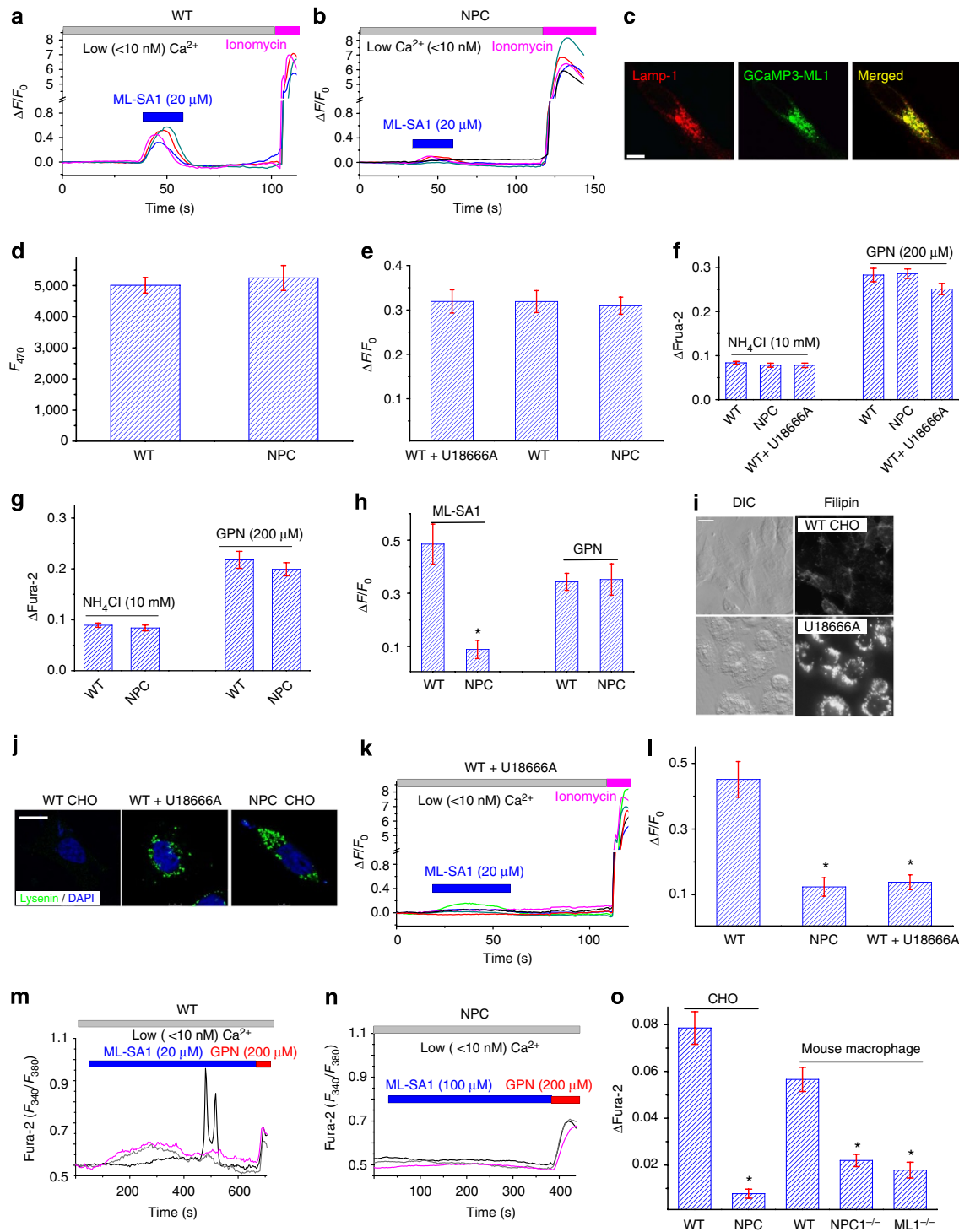
**SM accumulation reduces TRPML1-mediated Ca<sup>2+</sup> release.** The results presented above suggest that SM-mediated inhibition underlies NPC-mediated reduction in TRPML1-mediated lysosomal Ca<sup>2+</sup> release. Consistent with this, in fibroblasts derived from NPA patients, which completely lack the activity of aSMase<sup>3</sup>, TRPML1-mediated, but not GPN-induced, lysosomal Ca<sup>2+</sup> release (Fig. 7a-c) was significantly reduced. To further test this hypothesis, we induced



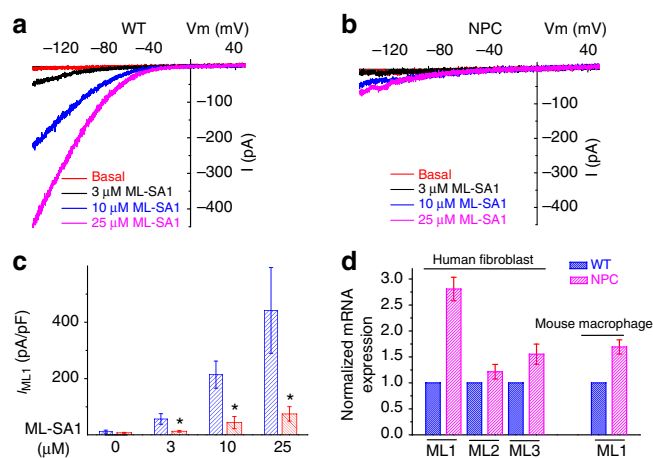
**Figure 3 | ML-SA1 induces TRPML1-mediated  $\text{Ca}^{2+}$  release from lysosomes.** (a) ML-SA1 (20  $\mu\text{M}$ ) induced rapid increases in GCaMP3 fluorescence (measured as change of GCaMP3 fluorescence  $\Delta F$  over basal fluorescence  $F_0$ ;  $\Delta F/F_0$ ) under low (< 10 nM) external  $\text{Ca}^{2+}$  in CHO cells transfected with GCaMP3-ML1. Subsequent application of GPN (200  $\mu\text{M}$ ) induced smaller responses. Maximal responses were induced by ionomycin (1  $\mu\text{M}$ ) application. (b) Representative micrographs from panel (a) to show the changes of GCaMP3 fluorescence upon bath application of ML-SA1 and ionomycin to GCaMP3-ML1-transfected CHO cells. Scale bar = 5  $\mu\text{m}$ . (c) ML-SA1 failed to induce significant  $\text{Ca}^{2+}$  increases in CHO cells transfected with GCaMP3-ML1-KK (non-conducting pore mutation). (d) Basal GCaMP3 fluorescence (normalized to the maximal ionomycin-induced fluorescence) of GCaMP3-ML1-KK and GCaMP3-ML1. (e) GPN (200  $\mu\text{M}$ ) pretreatment abolished ML-SA1-induced responses in GCaMP3-ML1-expressing CHO cells. (f) Repetitive applications of ML-SA1 (20  $\mu\text{M}$ ) induced little or no responses in GCaMP3-ML1-expressing CHO cells. (g) Repetitive applications of GPN (200  $\mu\text{M}$ ) induced smaller GCaMP3 responses in GCaMP3-ML1-expressing CHO cells. (h) ML-SA1 failed to further increase GCaMP3 fluorescence in GCaMP3-ML1-expressing CHO cells in the presence of GPN (200  $\mu\text{M}$ ). (i) ML-SA1 induced small responses in GCaMP3-ML1-expressing CHO cells that had received an application of GPN. (j) Baf-A1 (500 nM) pretreatment abolished ML-SA1-induced  $\text{Ca}^{2+}$  response in GCaMP3-ML1-expressing CHO cells. (k) ML-SA1-induced responses in CHO cells transfected with GCaMP3-ML1-KK (non-conducting pore mutation), and GCaMP3-ML1-transfected cells pretreated with Baf-A1, GPN or TG. For panels d and k, the responses were averaged for 40–100 transfected cells from at least three independent experiments; data are presented as the mean  $\pm$  s.e.m. Statistical comparisons were made using analysis of variance: \* $P < 0.05$ .

lysosomal SM accumulation by incubating cells with desipramine and fluoxetine for 2–4 h, which cause proteolytic degradation of aSMase<sup>30,31</sup>. Compared with non-treated cells, TRPML1-mediated lysosomal  $\text{Ca}^{2+}$  release was dramatically reduced in desipramine/fluoxetine-treated CHO cells, and the reduction was abolished in the presence of a protease inhibitor leupeptin<sup>30,31</sup> (Fig. 7d–g). Taken together, these results suggest that SM inhibition of TRPML1 underlies NPA- or NPC-mediated attenuation of TRPML1-mediated lysosomal  $\text{Ca}^{2+}$  release.

**TRPML1 regulates lysosomal lipid and cholesterol trafficking.** Human NPC, NPA and NPB fibroblasts exhibit defects in LEL-to-Golgi trafficking of lipids and proteins<sup>6,27</sup>. Consistent with this, BODIPY-LacCer, a fluorescent analogue of lactosylceramide that is localized in the Golgi apparatus of WT cells after a pulse-chase period<sup>32</sup>, was predominantly localized in the LEL-like compartments of NPC1<sup>-/-</sup> mouse macrophages (Fig. 8a). Owing to the established roles of PI(3,5)P<sub>2</sub>/TRPML1/ $\text{Ca}^{2+}$  in LEL-to-Golgi lipid trafficking<sup>15</sup>, it is possible that the trafficking defects seen in NP cells



**Figure 4 | Lysosomal  $\text{Ca}^{2+}$  release via TRPML1 is reduced in NPC cells.** (a,b) ML-SA1-induced lysosomal  $\text{Ca}^{2+}$  release in GCaMP3-ML1-transfected WT (a) and NPC (b) CHO cells. (c) Colocalization of GCaMP3-ML1 fluorescence with Lamp-1 in NPC CHO cells doubly transfected with GCaMP3-ML1 and Lamp-1-mCherry. Scale bar =  $5\ \mu\text{m}$ . (d) Comparable expression levels of GCaMP3-ML1 in WT and NPC CHO cells. Expression level of GCaMP3-ML1 was estimated by the maximal GCaMP3 fluorescence signal induced by ionomycin ( $1\ \mu\text{M}$ ). (e) Comparable GPN-induced GCaMP3 responses in WT, NPC or U18666A-treated GCaMP3-ML1-transfected CHO cells. (f)  $\text{NH}_4\text{Cl}$  ( $10\ \text{mM}$ ) and GPN ( $200\ \mu\text{M}$ ) induced comparable levels of  $\text{Ca}^{2+}$  increases (measured with Fura-2 ratios) in WT, NPC and U18666A-treated CHO cells. (g)  $\text{NH}_4\text{Cl}$  ( $10\ \text{mM}$ ) and GPN ( $200\ \mu\text{M}$ ) induced comparable levels of Fura-2  $\text{Ca}^{2+}$  responses in WT and NPC human fibroblasts. (h) TRPML1-mediated, but not GPN-induced, lysosomal  $\text{Ca}^{2+}$  release was reduced in GCaMP3-ML1-transfected NPC human fibroblasts compared with WT cells. (i) WT CHO cells were treated with U18666A ( $2\ \mu\text{g}\ \text{ml}^{-1}$ ) for 16 h, and then subjected to filipin staining. Scale bar =  $10\ \mu\text{m}$ . (j) SMs were stained with Lysenin ( $0.1\ \mu\text{g}\ \text{ml}^{-1}$ ) in WT CHO cells, WT CHO cells treated with U18666A ( $2\ \mu\text{g}\ \text{ml}^{-1}$ ) for 16 h and NPC CHO cells. Scale bar =  $10\ \mu\text{m}$ . (k)  $\text{Ca}^{2+}$  responses in GCaMP3-ML1-transfected WT CHO cells treated with U18666A ( $2\ \mu\text{g}\ \text{ml}^{-1}$ ) for 16–20 h. (l) ML-SA1-induced peak GCaMP3 responses were reduced in GCaMP3-ML1-transfected NPC or U18666A-treated WT CHO cells. (m,n) Endogenous TRPML1-mediated lysosomal  $\text{Ca}^{2+}$  release (measured with Fura-2 ratios) in WT (m) and NPC (n) CHO cells. (o) Average endogenous ML-SA1-induced lysosomal  $\text{Ca}^{2+}$  responses in WT and NPC CHO cells, and WT, NPC1 $^{-/-}$  and ML1 $^{-/-}$  mouse macrophages. For panels d, e, f, g, h, k, l and o, the results were averaged for 40–100 cells from at least three independent experiments; data are presented as the mean  $\pm$  s.e.m. Statistical comparisons were made using analysis of variance: \* $P < 0.05$ .



**Figure 5 | TRPML-mediated currents are reduced in the lysosomes of NPC cells. (a,b)** Concentration-dependent activation of whole-endolysosome  $I_{ML-L}$  in WT (a) and NPC (b) human fibroblasts. ML-SA1 (3, 10 and 25  $\mu$ M) was applied to the cytosolic sides of the vacuoles isolated from human fibroblasts. (c) Average current densities (pA/pF) of  $I_{ML-L}$  were reduced in NPC fibroblasts compared with WT cells. The current density was calculated from the current size (pA) normalized with the capacitance of the vacuole (pF). (d) Reverse transcriptase PCR analysis of *TRPML1-3* messenger RNA expression in WT and NPC human fibroblasts, and NPC1<sup>-/-</sup> mouse macrophages. Expression levels were normalized to that of glyceraldehyde-3-phosphate dehydrogenase (human fibroblast) and L32 (mouse macrophage). For panels c and d, data are presented as the mean  $\pm$  s.e.m. (WT (blue),  $n=6$ ; NPC (red),  $n=8$ ). Statistical comparisons were made using analysis of variance: \* $P < 0.05$ .

are due to the aforementioned attenuated TRPML1-mediated lysosomal  $Ca^{2+}$  release. If so, one would expect that boosting TRPML1 activity may correct the trafficking defects. Indeed, more than 60% of ML-SA1-treated NPC macrophages exhibited a Golgi-like pattern of LacCer staining, suggestive of a significant restoration in LEL-to-Golgi transport (Fig. 8a). In NPC1<sup>-/-</sup> mouse macrophages and TRPML1-transfected NPC CHO cells, the puncta number of LacCer staining, that reflects the function of LEL-to-Golgi transport, was significantly reduced in the presence of ML-SA1 (Fig. 8b and Supplementary Fig. S5). Collectively, these results suggest that increasing TRPML1's channel activity may restore the trafficking defects in NPC cells, and that TRPML1 deregulation is a pathogenic mechanism underlying lipid trafficking defects in NP cells.

NPC cells accumulate cholesterol, as demonstrated by elevated filipin staining<sup>25</sup>. However, in U18666A-treated CHO cells, ML-SA1 induced a significant reduction in filipin staining in TRPML1, but not TRPML1-KK-transfected cells (Fig. 8c,d). Likewise, in TRPML1-transfected NPC CHO cells, a significant reduction of filipin staining was also seen in the presence of ML-SA1 (Supplementary Fig. S5). Reduction of filipin staining was also seen in aSMase- (Fig. 8e,f) and TRPML1<sup>Va</sup>-transfected NPC CHO cells (Fig. 8g,h). These results suggest that increased TRPML1 activity may reduce cholesterol accumulation in NPC cells.

## Discussion

We used a lysosome-targeted GCaMP3-based  $Ca^{2+}$  imaging method to demonstrate that TRPML1-mediated lysosomal  $Ca^{2+}$  release, but not the lysosomal  $Ca^{2+}$  store as has been reported previously<sup>25</sup>, is selectively compromised in NPC and NPA cells. SM, a sphingolipid that is known to accumulate in all three types of NP cells<sup>4</sup>, inhibits TRPML1. Pharmacologically induced SM accumulation significantly reduces TRPML1-mediated lysosomal  $Ca^{2+}$  release. Conversely, increasing TRPML1's expression or activity is suffi-

cient to correct the trafficking defects and reduce cholesterol accumulation in NPC cells. Collectively, our work provides a feedback mechanism for luminal lipids to control lipid efflux from the lysosome, as well as a pathogenic cause for the secondary lysosome storage present in many LSDs.

SMs are present on the outer leaflet of the plasma membrane<sup>33</sup>, suggesting that SM inhibition of TRPML1 might serve as a physiological mechanism to prevent this lysosome channel from being active at the wrong subcellular location, that is, the plasma membrane. For normal cells, SMs in the lysosome would be rapidly degraded by aSMase activity<sup>33</sup>. In NP cells, however, SMs accumulate in the lumen and limited lysosomal membranes (Supplementary Fig. S1). Although the primary storage is likely to be cholesterol, NPC cells are found to have a much lower level of aSMase activity, and a restoration of aSMase activity could revert cholesterol accumulation<sup>34</sup>. It is not known whether the level of SM is perturbed in other sphingolipidoses. However, rather than absolute SM levels, the relative localization (plasma membrane versus lysosome) is the factor critical for lysosomal  $Ca^{2+}$  release. In addition, other offending metabolites might also inhibit TRPML1, and/or PI(3,5)P<sub>2</sub>-metabolizing enzymes. Thus, impaired  $Ca^{2+}$  release might be a common pathogenic mechanism for many LSDs. Although TRPML1 is the dominant lysosomal TRPML channel in most cell types, in other cell types where TRPML2 and TRPML3 are more abundantly expressed<sup>13</sup>, our proposed SM-mediated inhibitory mechanism may also be applied to TRPML2/3, causing lysosomal trafficking defects. Finally, SM and cholesterol accumulation might also contribute to NP phenotypes via mechanisms unrelated to lysosomal trafficking and TRPMLs<sup>3</sup>.

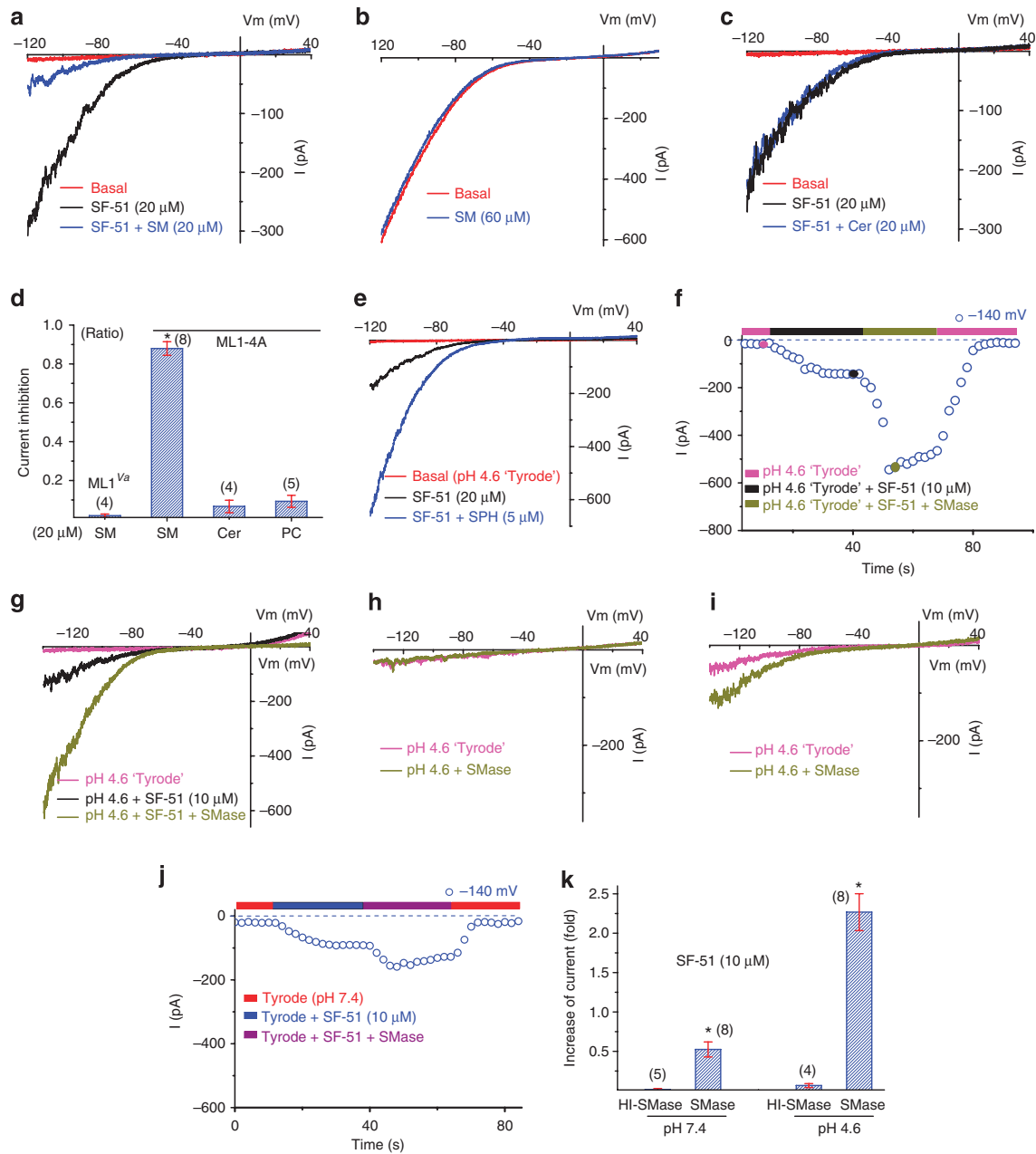
LEL-to-Golgi trafficking defects are seen in PI(3,5)P<sub>2</sub>-deficient cells<sup>22</sup>, ML4 fibroblasts<sup>15,35</sup> and NP fibroblasts, as well as fibroblasts from several other sphingolipid LSDs<sup>6,36</sup>. Our results suggest that reduced TRPML1-mediated lysosomal  $Ca^{2+}$  release directly causes trafficking defects. We previously reported that impaired Fe<sup>2+</sup> homeostasis facilitates the formation of autofluorescent lipofuscin in ML4 cells<sup>11</sup>. Interestingly, lipofuscin formation is also increased in NPC cells (Supplementary Fig. S6). For most LSDs, impaired lysosomal degradation due to a lack of hydrolytic enzymes leads to trafficking defects and lysosome storage. However, lysosome storage can in turn affect lysosomal degradation and membrane trafficking, which results in a positive feedback loop and a vicious cycle<sup>2</sup>. Our work suggests a novel concept that lysosome enhancement by manipulating TRPML1 to speed membrane trafficking may break the vicious cycle, providing a novel therapeutic approach for NPs and many other LSDs.

## Methods

**Molecular biology and biochemistry.** The GCaMP3-ML1 construct was made by inserting the full-length GCaMP3 sequence<sup>24</sup> between the HindIII and BamHI sites of a pcDNA6 plasmid that contains the mouse TRPML1 complementary DNA at the XhoI site. TRPML1-L<sup>15</sup>L/AA-L<sup>577</sup>L/AA (abbreviated as ML1-4A) and the TRPML1 non-conducting pore mutant (D471K/D472K; abbreviated as ML1-KK) were constructed using a site-directed mutagenesis kit (Qiagen). All constructs were confirmed by sequencing, and protein expression was verified by western blot. CHO, HEK293T, Cos-1 and human fibroblast cells were transiently transfected with GCaMP3-ML1 for electrophysiology,  $Ca^{2+}$  imaging and confocal imaging. PCR primers used for real-time quantitative PCR analysis of *TRPML* expression in human fibroblasts and mouse macrophages are as follows:

Human *TRPML1*: F, 5'-CGGATGACACCTTCGCAGCCTAC-3';  
R, 5'-ACGCATACCCGGCCAGTGACAC-3'  
Human *TRPML2*: F, 5'-GGTACCACACAGCTTGTTCTGT-3';  
R, 5'-TGATGATACTGATTAATAGCA-3'  
Human *TRPML3*: F, 5'-CCAGAAATTTGAACTGAGTGT-3';  
R, 5'-ATGTTATAGTCAGAGTAAAGTC-3'  
Mouse *TRPML1*: F, 5'-AAACACCCAGTGTCTCCAG-3';  
R, 5'-GAATGACACCCAGCCAGACT-3'

**ML4 and NPC cell lines.** NPC (CT43; NPC1<sup>-/-</sup>) and WT control (RA25) CHO cells were a gift from Dr Chang TY (Dartmouth Medical School). Human skin fibroblast cells from an ML4 patient (ML1<sup>-/-</sup>, clone GM02048), an NPC patient



**Figure 6 | Regulation of TRPML1 by SMs and sphingomyelinases.** (a) SF-51-activated whole-cell  $I_{ML1-4A}$  was inhibited by SMs (20  $\mu$ M) at low extracellular pH in ML1-4A-expressing HEK293T cells. (b) Insensitivity of whole-cell  $I_{ML1-Va}$  to SMs (60  $\mu$ M). (c) Lack of effect of ceramide (Cer, 20  $\mu$ M) on whole-cell  $I_{ML1-4A}$ . (d) Summary of the effects of various sphingolipids on whole-cell  $I_{ML1-4A}$  in ML1-4A-expressing HEK293T cells. PC: phosphocholine. (e) SF-51-activated whole-cell  $I_{ML1-4A}$  was potentiated by sphingosine (Sph; 5  $\mu$ M) at low external pH in ML1-4A-expressing HEK293T cells. (f) The effects of SMase (50  $\text{ng ml}^{-1}$ ) treatment on  $I_{ML1-4A}$  at low external pH.  $I_{ML1-4A}$  was elicited by repeated voltage ramps (-140 to +140 mV; 400 ms) with a 4-s interval between ramps. Current amplitudes at -140 mV were used to plot the time dependence. (g) Representative traces of  $I_{ML1-4A}$  before (black) and after (dark yellow) SMase treatment at two different time points, as shown in f. (h,i) SMase (50  $\text{ng ml}^{-1}$ ) treatment alone had no (six out of seven cells; see h for an example) or small (one out of seven cells; i) activation effect on basal whole-cell  $I_{ML1-4A}$  in ML1-4A-expressing HEK293T cells. (j) The effects of SMase (50  $\text{ng ml}^{-1}$ ) treatment on SF-51-activated  $I_{ML1-4A}$  at neutral external pH (pH 7.4). (k) The potentiation effect of SMase was more dramatic at pH 4.6, but abolished by heat inactivation of the enzyme activity. HI-SMase: heat-inactivated SMase. For panels d and k, data are presented as the mean  $\pm$  s.e.m.; the  $n$  numbers are in parentheses. Statistical comparisons were made using analysis of variance: \* $P < 0.05$ .

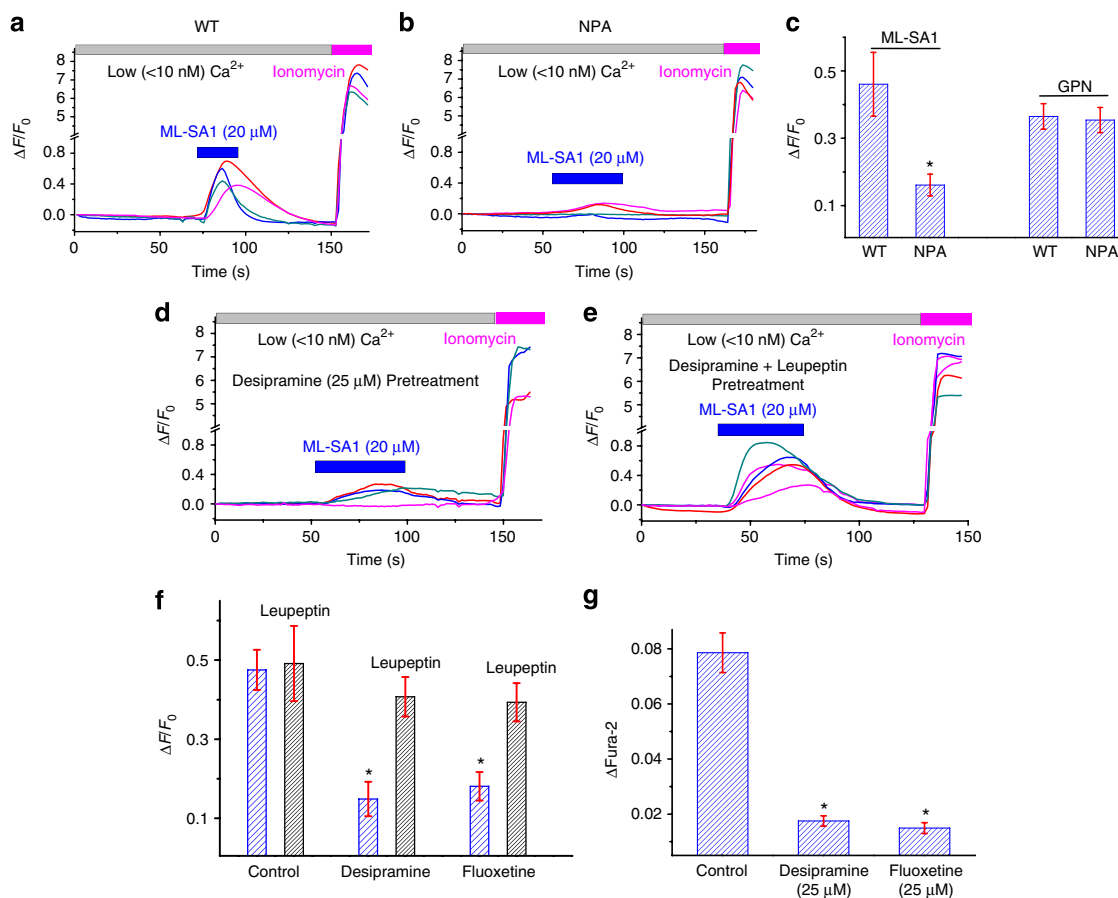
(NPC1<sup>-/-</sup>, clone GM03123) and an NPA patient (clone GM00112), and non-disease control cells (ML1<sup>+/+</sup>/NPC1<sup>-/-</sup>, clone GM00969) were obtained from the Coriell Institute for Medical Research (NJ, USA). Human fibroblasts were transiently transfected by electroporation (260 V, 950  $\mu$ F) with 100  $\mu$ g of GCaMP3-ML1 plasmid, and then used for Ca<sup>2+</sup> imaging experiments 24 h after electroporation.

**Mouse lines.** NPC1 KO mice (BALB/cNctr-Npc1m1N/J) and WT littermates were ordered from the Jackson Laboratories. TRPML1 knockout mice were kindly provided by Dr. Susan Slaughaupt (Harvard Medical School) and Dr. Jim Pickel

(NIH)<sup>37</sup>. Animals were used under approved animal protocols and University of Michigan Institutional Animal Care Guidelines.

**Preparation and culture of mouse macrophages.** Bone marrow cells from femurs and tibias were harvested and cultured in macrophage differentiation medium (RPMI-1640 medium with 10% fetal bovine serum (FBS) and 100 U ml<sup>-1</sup> recombinant colon stimulating factor from PeproTech, Rocky Hill, NJ, USA). After 7 days in culture at 37 °C with 5% CO<sub>2</sub>, the adherent cells (>95% are expected to be macrophages) were harvested for assays<sup>38</sup>.





**Figure 7 | SM accumulation in the lysosome reduces TRPML1-mediated  $\text{Ca}^{2+}$  release.** (a,b) ML-SA1-induced lysosomal  $\text{Ca}^{2+}$  release was reduced in GCaMP3-ML1-transfected NPA fibroblasts (b) compared with WT fibroblasts (a). (c) Average ML-SA1- ( $20\ \mu\text{M}$ ) and GPN-induced ( $200\ \mu\text{M}$ ) responses in GCaMP3-ML1-transfected WT and NPA fibroblasts. (d) Desipramine ( $25\ \mu\text{M}$ ) treatment for 2–4 h reduced TRPML1-mediated lysosomal  $\text{Ca}^{2+}$  release responses ( $20\ \mu\text{M}$  ML-SA1) in GCaMP3-ML1-transfected CHO cells. (e) Pretreatment of a protease inhibitor leupeptin ( $25\ \mu\text{M}$ ) abolished the effects of desipramine in ML-SA1-induced GCaMP3 responses. (f) Summary of the effects of desipramine ( $25\ \mu\text{M}$ ) and fluoxetine ( $25\ \mu\text{M}$ ) treatment for 2–4 h on TRPML1-mediated lysosomal  $\text{Ca}^{2+}$  release responses ( $20\ \mu\text{M}$  ML-SA1) in GCaMP3-ML1-transfected CHO cells. (g) Desipramine and fluoxetine treatment for 2–4 h reduced endogenous lysosomal  $\text{Ca}^{2+}$  release responses (measured with Fura-2 ratios;  $100\ \mu\text{M}$  ML-SA1) in CHO cells. For panels c, f and g, the results were averaged for 40–100 cells from at least three independent experiments; data are presented as the mean  $\pm$  s.e.m. Statistical comparisons were made using analysis of variance: \* $P < 0.05$ .

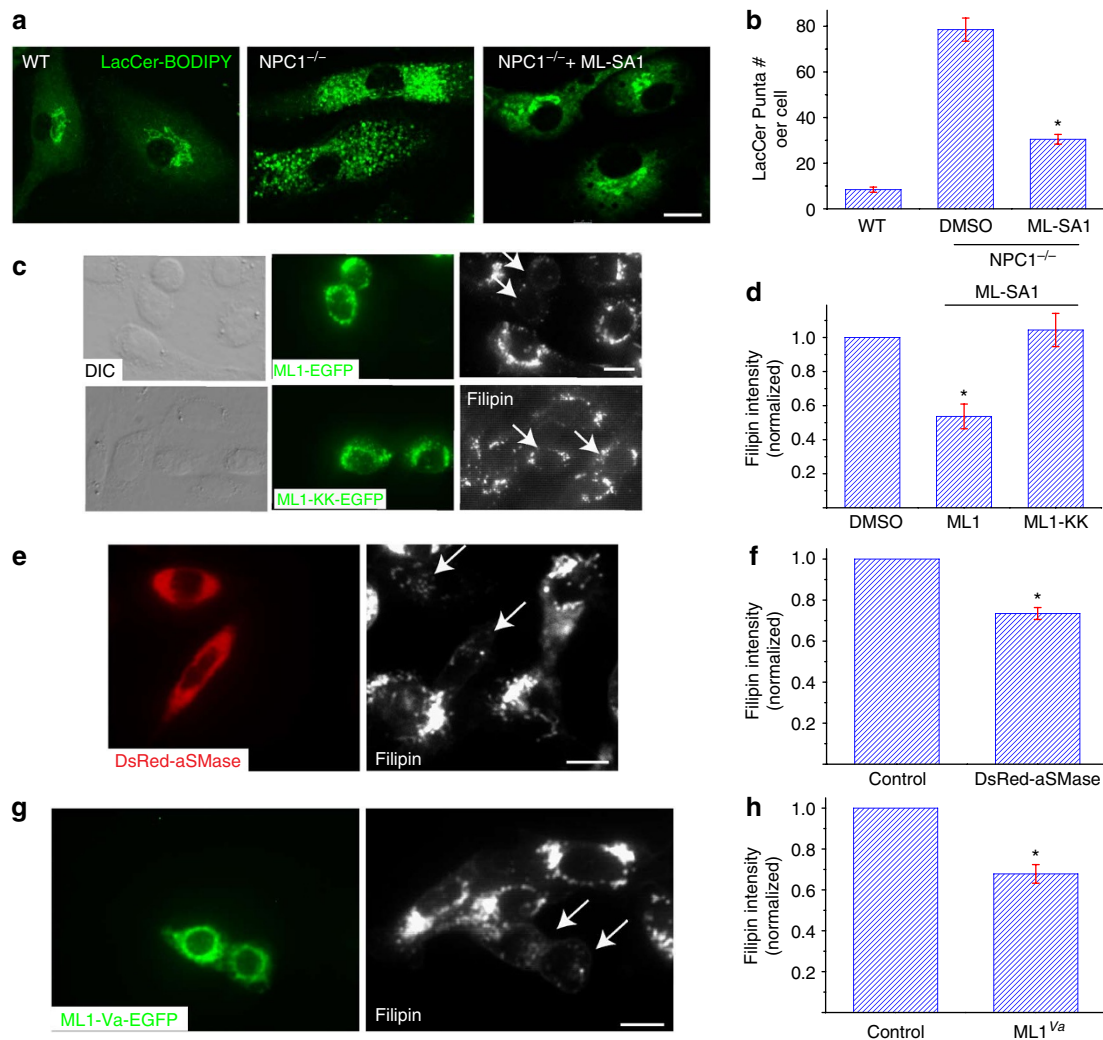
**Mammalian whole-cell electrophysiology.** HEK293T, Cos-1 and CHO cells were used for the heterologous expression experiments and were transfected using Lipofectamine 2000 (Invitrogen). The pipette solution contained 147 mM Cs, 120 mM methane-sulphonate, 4 mM NaCl, 10 mM EGTA, 2 mM  $\text{Na}_2\text{-ATP}$ , 2 mM  $\text{MgCl}_2$  and 20 mM HEPES (pH 7.2; free  $[\text{Ca}^{2+}]_i < 10\ \text{nM}$ ). The standard extracellular bath solution (modified Tyrode's solution) contained 153 mM NaCl, 5 mM KCl, 2 mM  $\text{CaCl}_2$ , 1 mM  $\text{MgCl}_2$ , 20 mM HEPES and 10 mM glucose (pH 7.4). The 'Low pH Tyrode' solution contained 150 mM Na-gluconate, 5 mM KCl, 2 mM  $\text{CaCl}_2$ , 1 mM  $\text{MgCl}_2$ , 10 mM glucose, 10 mM HEPES and 10 mM MES (pH 4.6). All bath solutions were applied via a perfusion system to achieve a complete solution exchange within a few seconds. Data were collected using an Axopatch 2A patch clamp amplifier, Digidata 1440 and pClamp 10.0 software (Axon Instruments). Whole-cell currents were digitized at 10 kHz and filtered at 2 kHz. All experiments were conducted at room temperature ( $21\text{--}23\ ^\circ\text{C}$ ), and all recordings were analysed with pClamp 10.0 and Origin 8.0 (OriginLab, Northampton, MA, USA).

**Endolysosomal electrophysiology.** Endolysosomal electrophysiology was performed in isolated endolysosomes using a modified patch-clamp method<sup>11,14</sup>. Briefly, cells were treated with  $1\ \mu\text{M}$  vacuolin-1 for 2–5 h to increase the size of endosomes and lysosomes. Whole-endolysosome recordings were performed on isolated enlarged LELs. The bath (internal/cytoplasmic) solution contained 140 mM K-gluconate, 4 mM NaCl, 1 mM EGTA, 2 mM  $\text{Na}_2\text{-ATP}$ , 2 mM  $\text{MgCl}_2$ , 0.39 mM  $\text{CaCl}_2$ , 0.2 mM GTP and 10 mM HEPES (pH adjusted with KOH to 7.2; free  $[\text{Ca}^{2+}]_i \sim 100\ \text{nM}$  based on the MaxChelator software (<http://maxchelator.stanford.edu/>)). The pipette (luminal) solution consisted of a 'Low pH Tyrode's solution' with 145 mM NaCl, 5 mM KCl, 2 mM  $\text{CaCl}_2$ , 1 mM  $\text{MgCl}_2$ , 10 mM HEPES, 10 mM MES and 10 mM glucose (pH 4.6).

**Fura-2  $\text{Ca}^{2+}$  imaging.** Cells were loaded with  $5\ \mu\text{M}$  Fura-2 AM in the culture medium at  $37\ ^\circ\text{C}$  for 60 min. Fluorescence was recorded at different excitation wavelengths using an EasyRatioPro system (PTI). Fura-2 ratios ( $F_{340}/F_{380}$ ) were used to monitor changes in intracellular  $[\text{Ca}^{2+}]_i$  upon stimulation. GPN ( $200\text{--}400\ \mu\text{M}$ , a lysosome-disrupting agent) and Baf-A1 ( $500\ \text{nM}$ , a V-ATPase inhibitor) were used as positive controls to induce  $\text{Ca}^{2+}$  release from lysosome and acidic stores, respectively<sup>39</sup>. Ionomycin ( $1\ \mu\text{M}$ ) was added at the conclusion of all experiments to induce a maximal response for comparison. For endogenous lysosomal  $\text{Ca}^{2+}$  release measurement,  $\text{Ca}^{2+}$  imaging was carried out within 0.5–3 h after plating and when cells still exhibited a round morphology.

**GCaMP3  $\text{Ca}^{2+}$  imaging.** At 18–24 h after transfection with GCaMP3-ML1, CHO or human fibroblast cells were trypsinized and plated onto glass coverslips. Most experiments were carried out within 0.5–3 h after plating when cells still exhibited a round morphology. The fluorescence intensity at  $470\ \text{nm}$  ( $F_{470}$ ) was monitored using the EasyRatioPro system. Lysosomal  $\text{Ca}^{2+}$  release was measured under a 'low' external  $\text{Ca}^{2+}$  solution, which contained 145 mM NaCl, 5 mM KCl, 3 mM  $\text{MgCl}_2$ , 10 mM glucose, 1 mM EGTA and 20 mM HEPES (pH 7.4).  $\text{Ca}^{2+}$  concentration in the nominally free  $\text{Ca}^{2+}$  solution is estimated to be  $1\text{--}10\ \mu\text{M}$ . With 1 mM EGTA, the free  $\text{Ca}^{2+}$  concentration is estimated to be  $< 10\ \text{nM}$  based on the MaxChelator software (<http://maxchelator.stanford.edu/>).

**LacCer-BODIPY trafficking.** Cells for the Lactosylceramide (LacCer)-BODIPY uptake experiment were grown on glass coverslips and incubated with  $5\ \mu\text{M}$  bovine serum albumin-complexed LacCer in 'Tyrode' solution for 45 min at room temperature. Cells were then washed twice with PBS and incubated with normal DMEM/F12 medium containing 10% FBS at  $37\ ^\circ\text{C}$  for 1 h. For the correction experiments, NPC1<sup>-/-</sup> macrophages were pretreated with ML-SA1 ( $10\ \mu\text{M}$ ) for



**Figure 8 | ML-SA1 and TRPML1 overexpression rescue the trafficking defects and reduce cholesterol accumulation in NPC cells.** (a) A fluorescent analogue of lactosylceramide, BODIPY-LacCer, was mainly localized in the Golgi-like structures of WT macrophages after a pulse-chase for 1 h, but accumulated in the LEL-like vesicles of NPC macrophages. ML-SA1 (10  $\mu$ M) treatment of NPC1<sup>-/-</sup> macrophages for 12 h resulted in a primary Golgi-like localization for LacCer. Scale bar = 10  $\mu$ m. (b) ML-SA1 reduced the number of LacCer puncta in NPC1<sup>-/-</sup> macrophages. (c,d) ML-SA1 reduced unesterified cholesterol (filipin) staining in ML1, but not ML1-KK-expressing U18666A-treated WT CHO cells. Differential interference contrast (DIC) images are shown for comparison. Scale bar = 10  $\mu$ m. (e) Unesterified cholesterol (filipin) staining in NPC CHO cells was partially reduced in cells expressing DsRed-aSMase. (f) Average filipin staining (intensity normalized to non-transfected control cells) in DsRed-aSMase-transfected cells. (g) Unesterified cholesterol (filipin) staining in NPC CHO cells was partially reduced in cells expressing ML1-Va-EGFP (ML1<sup>Va</sup>). (h) Average filipin staining (intensity normalized to non-transfected control cells) in ML1<sup>Va</sup>-transfected cells. Scale bar = 10  $\mu$ m for panels a, c, e and g. For panels b, d, f and h, the results were averaged for multiple randomly taken micrographs from at least three independent experiments. Data are presented as the mean  $\pm$  s.e.m. Statistical comparisons were made using analysis of variance: \* $P$  < 0.05.

12 h, and chased in the presence of ML-SA1 (10  $\mu$ M). Images were taken using a Leica (TCS SP5) confocal microscope.

**Filipin staining.** Cells were fixed in 3% paraformaldehyde for 1 h, washed twice with PBS and then incubated with 1.5 mg ml<sup>-1</sup> glycine in PBS for 10 min. Cells were then stained for 2 h with 0.05 mg ml<sup>-1</sup> filipin<sup>25</sup> in PBS supplemented with 10% FBS. All procedures were conducted at room temperature. Images were taken using a fluorescence microscope with a UV filter. The lysosome-like storage organelle filipin intensity was calculated based on low- and high-threshold intensities in the image<sup>34</sup>.

**Lysenin staining.** Cells were fixed with 4% Paraformaldehyde (PFA) for 20 min, blocked with 1% bovine serum albumin in Phosphate Buffer Saline with 0.1% (v/v) Tween-20 (PBST) for 2 h and then incubated with lysenin (0.1  $\mu$ g ml<sup>-1</sup>, Peptides International) for 20 h at 4 °C. The cells were then incubated with anti-lysenin antibody (Peptides International) for 1 h, followed by Alexa Fluor 488 anti-rabbit (Invitrogen) for 45 min. Images were taken using a Leica confocal microscope.

**Reagents.** Sphingomyelins (Sigma) were dissolved in 'Tyrode' or 'Low pH Tyrode' solutions by sonication.  $\beta$ -cyclodextrin, filipin and fluoxetine were obtained from

Sigma; desipramine was purchased from Santa Cruz; C6-ceramide was obtained from Matreya, LLC; sphingomyelinase was obtained from MP Biomedicals; SF-51 and ML-SA1 were purchased from Princeton BioMolecular Research Inc; PI(3,5)P<sub>2</sub> was purchased from Echelon; U18666A was purchased from Enzo; LacCer-BODIPY was purchased from Invitrogen, and lysenin and anti-lysenin antibody were purchased from Peptides International.

**Data analysis.** Data are presented as the mean  $\pm$  s.e.m.. Statistical comparisons were made using analysis of variance. A  $P$ -value < 0.05 was considered statistically significant.

## References

- de Duve, C. The lysosome turns fifty. *Nat. Cell Biol.* **7**, 847–849 (2005).
- Parkinson-Lawrence, E. J. *et al.* Lysosomal storage disease: revealing lysosomal function and physiology. *Physiology (Bethesda)* **25**, 102–115 (2010).
- Schuchman, E. H. Acid sphingomyelinase, cell membranes and human disease: lessons from Niemann-Pick disease. *FEBS Lett.* **584**, 1895–1900 (2010).

4. Rosenbaum, A. I. & Maxfield, F. R. Niemann-Pick type C disease: molecular mechanisms and potential therapeutic approaches. *J. Neurochem.* **116**, 789–795 (2011).
5. Vitner, E. B., Platt, F. M. & Futerman, A. H. Common and uncommon pathogenic cascades in lysosomal storage diseases. *J. Biol. Chem.* **285**, 20423–20427 (2010).
6. Puri, V. *et al.* Cholesterol modulates membrane traffic along the endocytic pathway in sphingolipid-storage diseases. *Nat. Cell Biol.* **1**, 386–388 (1999).
7. Kiselyov, K., Yamaguchi, S., Lyons, C. W. & Muallem, S. Aberrant Ca<sup>2+</sup> handling in lysosomal storage disorders. *Cell Calcium* **47**, 103–111 (2010).
8. Pryor, P. R., Reimann, F., Gribble, F. M. & Luzio, J. P. Mucolipin-1 is a lysosomal membrane protein required for intracellular lactosylceramide traffic. *Traffic* **7**, 1388–1398 (2006).
9. Vargarajauregui, S. & Puertollano, R. Two di-leucine motifs regulate trafficking of mucolipin-1 to lysosomes. *Traffic* **7**, 337–353 (2006).
10. Thompson, E. G., Schaheen, L., Dang, H. & Fares, H. Lysosomal trafficking functions of mucolipin-1 in murine macrophages. *BMC Cell Biol.* **8**, 54 (2007).
11. Dong, X. P. *et al.* The type IV mucopolidosis-associated protein TRPML1 is an endolysosomal iron release channel. *Nature* **455**, 992–996 (2008).
12. Venkatachalam, K. *et al.* Motor deficit in a Drosophila model of mucopolidosis type IV due to defective clearance of apoptotic cells. *Cell* **135**, 838–851 (2008).
13. Cheng, X., Shen, D., Samie, M. & Xu, H. Mucolipins: intracellular TRPML1-3 channels. *FEBS Lett.* **584**, 2013–2021 (2010).
14. Dong, X. P. *et al.* PI(3,5)P(2) controls membrane traffic by direct activation of mucolipin Ca release channels in the endolysosome. *Nat. Commun.* **1**, 38 (2010).
15. Shen, D., Wang, X. & Xu, H. Pairing phosphoinositides with calcium ions in endolysosomal dynamics: phosphoinositides control the direction and specificity of membrane trafficking by regulating the activity of calcium channels in the endolysosomes. *Bioessays* **33**, 448–457 (2011).
16. Bargal, R. *et al.* Identification of the gene causing mucopolidosis type IV. *Nat. Genet.* **26**, 118–123 (2000).
17. Bassi, M. T. *et al.* Cloning of the gene encoding a novel integral membrane protein, mucolipidin and identification of the two major founder mutations causing mucopolidosis type IV. *Am. J. Hum. Genet.* **67**, 1110–1120 (2000).
18. Sun, M. *et al.* Mucopolidosis type IV is caused by mutations in a gene encoding a novel transient receptor potential channel. *Hum. Mol. Genet.* **9**, 2471–2478 (2000).
19. Grimm, C. *et al.* A helix-breaking mutation in TRPML3 leads to constitutive activity underlying deafness in the varitint-waddler mouse. *Proc. Natl Acad. Sci. USA* **104**, 19583–19588 (2007).
20. Xu, H., Delling, M., Li, L., Dong, X. & Clapham, D. E. Activating mutation in a mucolipin transient receptor potential channel leads to melanocyte loss in varitint-waddler mice. *Proc. Natl Acad. Sci. USA* **104**, 18321–18326 (2007).
21. Grimm, C. *et al.* Small molecule activators of TRPML3. *Chem. Biol.* **17**, 135–148 (2010).
22. Zhang, Y. *et al.* Loss of Vac14, a regulator of the signaling lipid phosphatidylinositol 3,5-bisphosphate, results in neurodegeneration in mice. *Proc. Natl Acad. Sci. USA* **104**, 17518–17523 (2007).
23. Abe, K. & Puertollano, R. Role of TRP channels in the regulation of the endosomal pathway. *Physiology (Bethesda)* **26**, 14–22 (2011).
24. Tian, L. *et al.* Imaging neural activity in worms, flies and mice with improved GCaMP calcium indicators. *Nat. Methods* **6**, 875–881 (2009).
25. Lloyd-Evans, E. *et al.* Niemann-Pick disease type C1 is a sphingosine storage disease that causes deregulation of lysosomal calcium. *Nat. Med.* **14**, 1247–1255 (2008).
26. Cadigan, K. M., Spillane, D. M. & Chang, T. Y. Isolation and characterization of Chinese hamster ovary cell mutants defective in intracellular low density lipoprotein-cholesterol trafficking. *J. Cell Biol.* **110**, 295–308 (1990).
27. Cruz, J. C., Sugii, S., Yu, C. & Chang, T. Y. Role of Niemann-Pick type C1 protein in intracellular trafficking of low density lipoprotein-derived cholesterol. *J. Biol. Chem.* **275**, 4013–4021 (2000).
28. Liscum, L. & Faust, J. R. The intracellular transport of low density lipoprotein-derived cholesterol is inhibited in Chinese hamster ovary cells cultured with 3-beta-[2-(diethylamino)ethoxy]androst-5-en-17-one. *J. Biol. Chem.* **264**, 11796–11806 (1989).
29. Lloyd-Evans, E. & Platt, F. M. Lipids on trial: the search for the offending metabolite in Niemann-Pick type C disease. *Traffic* **11**, 419–428 (2010).
30. Hurwitz, R., Ferlinz, K. & Sandhoff, K. The tricyclic antidepressant desipramine causes proteolytic degradation of lysosomal sphingomyelinase in human fibroblasts. *Biol. Chem. Hoppe Seyler* **375**, 447–450 (1994).
31. Kornhuber, J. *et al.* Identification of new functional inhibitors of acid sphingomyelinase using a structure-property-activity relation model. *J. Med. Chem.* **51**, 219–237 (2008).
32. Pagano, R. E. & Chen, C. S. Use of BODIPY-labeled sphingolipids to study membrane traffic along the endocytic pathway. *Ann. N Y Acad. Sci.* **845**, 152–160 (1998).
33. Kolter, T. & Sandhoff, K. Lysosomal degradation of membrane lipids. *FEBS Lett.* **584**, 1700–1712 (2010).
34. Devlin, C. *et al.* Improvement in lipid and protein trafficking in Niemann-Pick C1 cells by correction of a secondary enzyme defect. *Traffic* **11**, 601–615 (2010).
35. Chen, C. S., Bach, G. & Pagano, R. E. Abnormal transport along the lysosomal pathway in mucopolidosis, type IV disease. *Proc. Natl Acad. Sci. USA* **95**, 6373–6378 (1998).
36. Chen, C. S., Patterson, M. C., Wheatley, C. L., O'Brien, J. F. & Pagano, R. E. Broad screening test for sphingolipid-storage diseases. *Lancet* **354**, 901–905 (1999).
37. Venugopal, B. *et al.* Neurologic, gastric, and ophthalmologic pathologies in a murine model of mucopolidosis type IV. *Am. J. Hum. Genet.* **81**, 1070–1083 (2007).
38. Link, T. M. *et al.* TRPV2 has a pivotal role in macrophage particle binding and phagocytosis. *Nat. Immunol.* **11**, 232–239 (2010).
39. Calcraft, P. J. *et al.* NAADP mobilizes calcium from acidic organelles through two-pore channels. *Nature* **459**, 596–600 (2009).

## Acknowledgements

This work was supported by NIH RO1 grants (NS062792 to H.X. and NS063967 to A.P.L.). WT control and NPC (NPC1<sup>-/-</sup>) CHO cells were a gift from Dr. T.Y. Chang at Dartmouth Medical School. We are grateful to Drs Susan Slaugenhaupt and Jim Pickel for TRPML1<sup>-/-</sup> mice, Dr. Loren Looger for the GCaMP3 construct, Dr. Yusuf Hannun for the DsRed-aSmase construct, and Richard Hume and Ken Cadigan for comments on an earlier version of the manuscript. We appreciate the encouragement and helpful comments from other members of the Xu laboratory.

## Author contributions

H.X., D.S., A.P.L. and H.D.S. designed the research; D.S., X.W., X.L., X.Z., Z.Y., S.D., X.-P.D. and T.Y. performed the research; X.L. and D.S. contributed the new reagents; D.S., X.W., X.L., X.Z., Z.Y., T.D., A.P.L., H.D.S. and H.X. analysed the data; and H.X. and D.S. wrote the paper with inputs from all the authors.

## Additional information

**Supplementary Information** accompanies this paper at <http://www.nature.com/naturecommunications>

**Competing financial interests:** The authors declare no competing financial interests.

**Reprints and permission** information is available online at <http://npg.nature.com/reprintsandpermissions/>

**How to cite this article:** Shen, D. *et al.* Lipid storage disorders block lysosomal trafficking by inhibiting a TRP channel and lysosomal calcium release. *Nat. Commun.* **3**:731 doi: 10.1038/ncomms1735 (2012).