

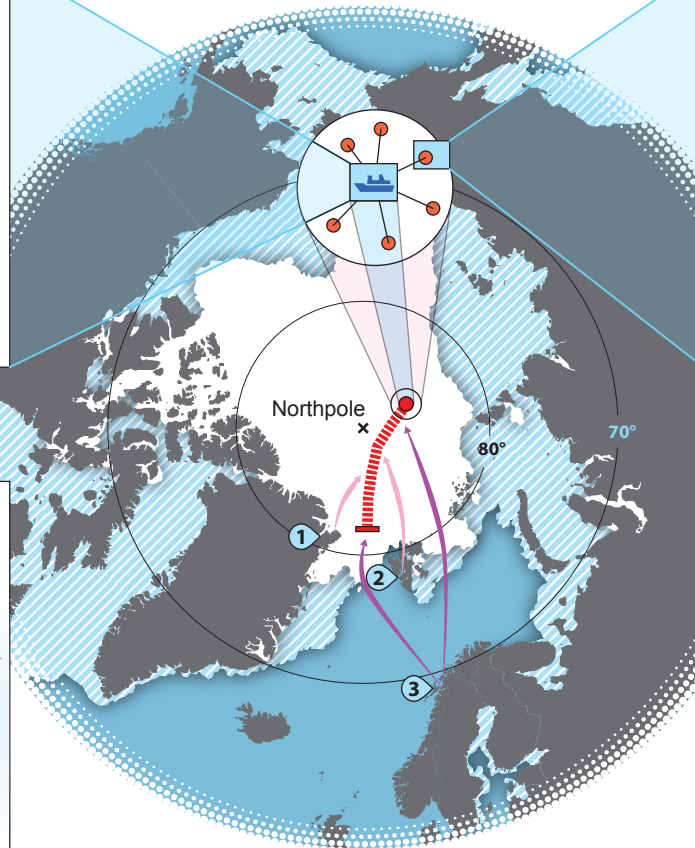
The Transpolar Drift

From autumn 2019, the German research icebreaker Polarstern will drift through the Arctic Ocean, locked in the ice. During the MOSAiC expedition, experts from 17 nations will observe the Arctic in the course of an entire year, and will overwinter in a region that is practically inaccessible during the long polar night. Further, the drifting sea ice alone will determine Polarstern's route, which will take it beyond the Northern Lights.

The German research icebreaker Polarstern will be at the heart of the expedition.



September 2019 **Drift** September 2020



Surrounding Polarstern, a several-kilometre-wide network of monitoring stations will be set up



During the expedition, at least three research aircraft will be deployed.



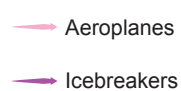
Four icebreakers from Russia, China and Sweden will resupply the expedition with fuel and exchange personnel.



Ice expanse:



Contact routes:



Harbours / Airports:

- ① Station Nord, Greenland
- ② Longyearbyen, Svalbard
- ③ Tromsø, Norway