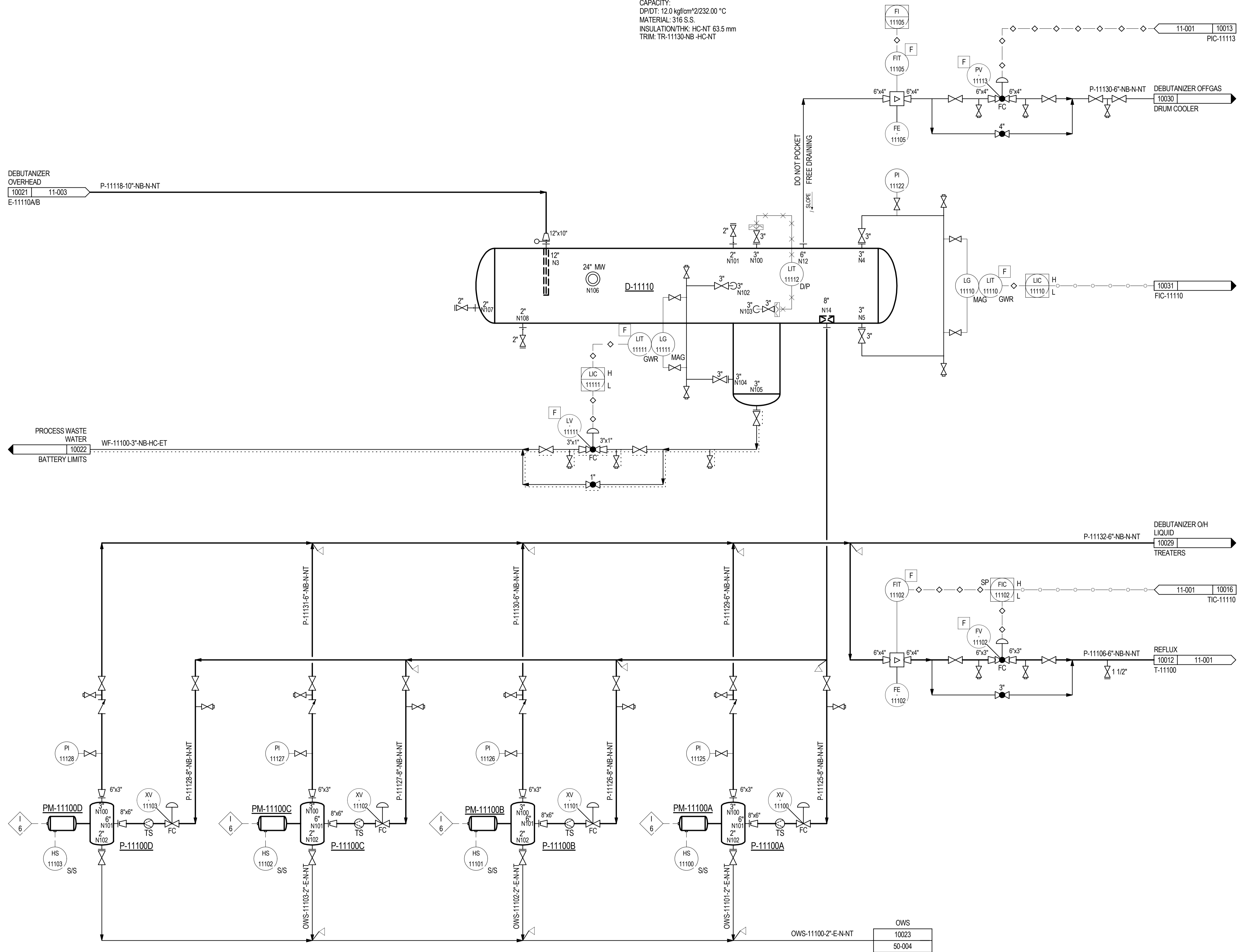


D-11110
 DEBUTANIZER RECEIVER
 SIZE: 2400 mm ID X 1800 mm T-T
 CAPACITY:
 DP/DT: 12.0 kg/cm²/232.00 °C
 MATERIAL: 316 S.S.
 INSULATION/THK: HC-NT 63.5 mm
 TRIM: TR-11130-NB-HC-NT



- NOTES:**
- This drawing was prepared for MIMOSA to support the OGI Pilot, see the www.MIMOSA.org site for details, stakeholders can register, participate and access the OGI Pilot data from this location.
 - For P&ID Legend Symbols and General Notes see drawings:
 00-001 - ABBREVIATIONS, LINE SERVICES, MISCELLANEOUS
 00-002 - EQUIPMENT SYMBOLS
 00-003 - PIPING SYMBOLS
 00-004 - INSTRUMENT LETTER DEFINITION CHART
 00-005 - INSTRUMENT SYMBOLS SHEET 1
 00-006 - INSTRUMENT SYMBOLS SHEET 2
 - For sample P&ID ISO 15926 data see the corresponding .XML file(s) for this drawing.

REV	DATE	DESCRIPTION	BY	CHK	ENG	PEM	PM
B	12-Sept-12	ADDED PROCESS DATA					
A	22-Aug-12	ISSUE FOR REVIEW					



CLIENT/PROJECT TITLE		WORLEYPARSONS MIMOSA OGI Pilot - Phase 1	
PROJECT NO.			
SCALE		NONE	
DWG. NO.		11-004	
REVISION		A	

NOTE: THIS DRAWING AND THE DATA CONTAINED HEREIN ARE OF A CONFIDENTIAL NATURE AND ARE THE PROPERTY OF WORLEYPARSONS. NO PART OF THIS DRAWING OR THE INFORMATION CONTAINED HEREIN SHALL BE REPRODUCED OR TRANSMITTED IN ANY FORM OR BY ANY MEANS, ELECTRONIC OR MECHANICAL, INCLUDING PHOTOCOPYING, RECORDING, OR BY ANY INFORMATION STORAGE AND RETRIEVAL SYSTEM, WITHOUT THE WRITTEN PERMISSION FROM THE DRAWING OWNER.

P-11100A/B/C/D
 DEBUTANIZER OVERHEAD PUMP
 CAPACITY:
 HP: 11.0 kcal/hr
 MATERIAL: 316 S.S.
 INSULATION/THK: N-NT

