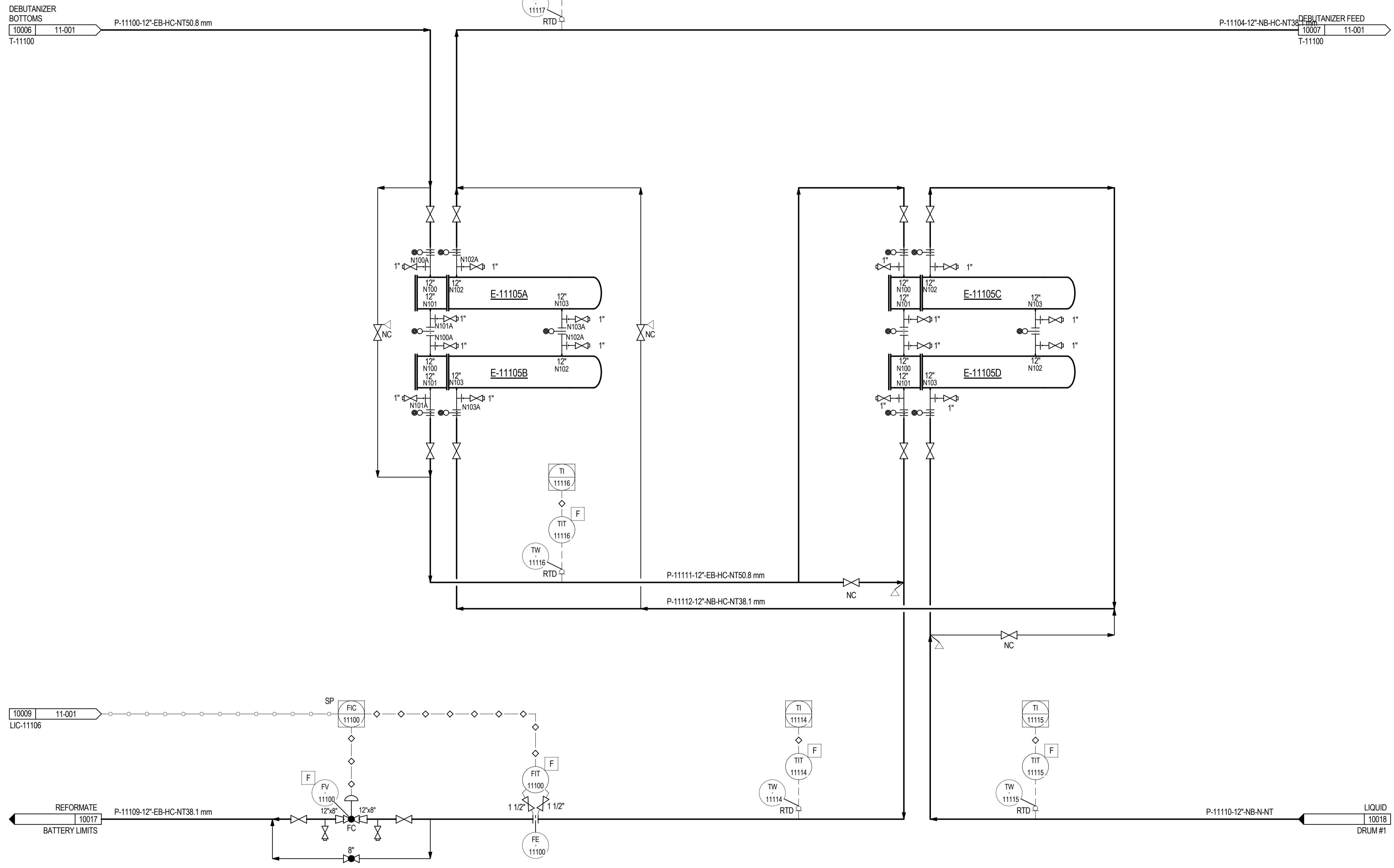


**E-11105A/B/C/D**  
 DEBUTANIZER FEED-BOTTOMS EXCHANGER  
 DUTY: 20.0 kcal/hr  
 SHELL DP/DT: 15.0 kgf/cm<sup>2</sup>/232.00 °C  
 TUBE DP/DT: 12.0 kgf/cm<sup>2</sup>/238.00 °C  
 MATERIAL (SHELL/TUBE): 316 S.S./347 S.S.  
 INSULATION/THK: HC-NT 63.5 mm  
 TRIM: TR-11113-NB -HC-NT



- NOTES:**
- This drawing was prepared for MIMOSA to support the OGI Pilot, see the www.MIMOSA.org site for details, stakeholders can register, participate and access the OGI Pilot data from this location.
  - For P&ID Legend Symbols and General Notes see drawings:  
 00-001 - ABBREVIATIONS, LINE SERVICES, MISCELLANEOUS  
 00-002 - EQUIPMENT SYMBOLS  
 00-003 - PIPING SYMBOLS  
 00-004 - INSTRUMENT LETTER DEFINITION CHART  
 00-005 - INSTRUMENT SYMBOLS SHEET 1  
 00-006 - INSTRUMENT SYMBOLS SHEET 2
  - For sample P&ID ISO 15926 data see the corresponding .XML file(s) for this drawing.

REV	DATE	DESCRIPTION	BY	CHK	ENG	PEM	FM
B	12-Sept-12	ADDED PROCESS DATA					
A	22-Aug-12	ISSUE FOR REVIEW					



CLIENT/PROJECT TITLE		WORLEYPARSONS MIMOSA OGI Pilot - Phase 1	
PROJECT NO.			
SCALE		NONE	
DWG. NO.	11-002	REVISION	A
FILE NAME: 10011111-002.ppt			

NOTE: THIS DRAWING AND THE DATA CONTAINED HEREIN ARE OF A CONFIDENTIAL NATURE AND ARE NOT TO BE REPRODUCED OR TRANSMITTED IN ANY FORM OR BY ANY MEANS, ELECTRONIC OR MECHANICAL, INCLUDING PHOTOCOPYING, RECORDING, OR BY ANY INFORMATION STORAGE AND RETRIEVAL SYSTEM, WITHOUT THE WRITTEN PERMISSION OF THE ORIGINAL OR COPYRIGHT OWNER.

