



THE LONDON SCHOOL
OF ECONOMICS AND
POLITICAL SCIENCE ■

Research for the World strategy

LSE 2030: SHAPE THE WORLD

2030

Foreword

“To know the causes of things” is not merely the motto of the London School of Economics and Political Science; the phrase is also an elegant, timeless description of the core purpose of a university. Quite simply, higher education institutions exist to broaden and advance the frontiers of knowledge, and then share the benefits with society through teaching, knowledge exchange, collaboration, and innovation. Indeed, LSE was based on the founding principle, ‘for the betterment of society’.

LSE is the leading social sciences university in the world, with a long history of excellence in the production of new and influential scholarship. Most of our academic departments rate among the very best in various global university rankings. Nearly a quarter of Nobel Memorial Prizes in Economic Sciences have been awarded to thinkers who have worked or studied at LSE. And through public engagement and unparalleled partnerships with governments, multilateral organisations, businesses, other universities and civil society groups around the world, LSE is one of the most successful institutions at translating ideas into influence and real-world impact.

The School has grown substantially in recent years and is reaching for new heights. We need an ambitious research strategy befitting our status and aspirations. We have led a wide-ranging consultation process engaging staff, students, leaders and external stakeholders to evaluate our entire research ecosystem and consider our future from all perspectives. The outcomes reflect a holistic view of research at LSE – what it means, what we could achieve and how best to ensure we deliver to our fullest potential for the benefit of our organisation and people, communities, peers, partners and beneficiaries.

In the pages that follow, you will find the fruit of this hard work – a detailed strategy to improve and sustain research excellence, nurture a research environment like no other, accelerate our real-world impact, and champion the contribution of the social sciences to growth and prosperity. It touches on every facet of research at LSE - from attracting the very best social scientists and enhancing the support for early career researchers, through to improving the full research, impact and innovation lifecycle to generate the highest quality research that can help shape a thriving, sustainable, inclusive, and happy future.

Quite simply, higher education institutions exist to broaden and advance the frontiers of knowledge, and then share the benefits with society through teaching, knowledge exchange, collaboration, and innovation.



Professor
Susana Mourato,
Vice President
and Pro-Vice
Chancellor (Research)

2030

Context

LSE is unique in our dedication to the social sciences. The School is organised around 29 departments and institutes and associated research centres, covering the breadth of the social sciences and underpinning all of LSE's research activity and our global reputation. LSE's British Library of Political and Economic Science is one of the largest social science libraries in Europe.



LSE is consistently ranked as one of the most internationally diverse universities in the world, with approximately 70 per cent of our students and 47 per cent of our staff hailing from outside the United Kingdom and representing some 140 countries around the globe.

We are committed to building a vibrant, equitable and inclusive research environment for staff and students from all over the world.



In keeping with our name, we are a community of people and ideas at the heart of London, arguably the most dynamic of global cities. We are physically and intellectually placed at the centre of international politics, finance, media, business and culture.

This position bestows on us a special opportunity – and responsibility – to convene the world in London for maximum impact and influence.



LSE is, by some measures, the most entrepreneurial university in Europe. LSE alumni founders have raised more than \$30 billion in investment capital in recent years, and 27 start-ups founded by LSE students and graduates have turned into "unicorn" companies with market valuations of over \$1 billion – 17 in the last four years alone. This success demands a strategy that supports our innovation ecosystem and encourages our researchers and students to make use of our entrepreneurial resources in their work.



GenDen coworking space for entrepreneurs on LSE campus

The Research for the World strategy is a bespoke document, tailored specifically to address many of the unique features that differentiate LSE from other higher education institutions. It is also an important component of LSE 2030: Shape the World – our comprehensive, integrated strategy for maintaining LSE's leading position in an increasingly competitive global environment. Our emphasis on research cannot stand alone, but must align with other strategic priorities, most crucially through embedding research at all levels of our educational offering, and through involving the entire School community – faculty, staff, undergraduate and postgraduate students, alumni and friends – in the research process. It is our expectation that Research for the World will strengthen LSE's position as a source of creative, original, influential, and impactful ideas to shape the world.

2030



Mission

LSE 2030: Shape the World's ambition is for LSE to be **the leading social science institution in the world with the greatest global impact.**

Research for the World will help achieve this ambition by developing our research and innovation ecosystem to enable and support world-class research across the entirety of the social sciences, with the widest possible impact. We will use our influence to represent, demonstrate and strengthen the value of the social sciences to tackle the world's greatest challenges.

LSE Festival exhibition: Mapping People and Change, June 2023

2030

Guiding principles and values

LSE is a world-class research institution that upholds the values of independence, excellence and integrity. We fully support academic freedom and curiosity-driven research.

We understand the importance of strategic collaboration to research the world's most pressing issues. We strive to recognise, value and reward diversity of research excellence and will actively embed and promote equality, diversity and inclusion across career stages within all aspects of this strategy to ensure true innovation.



Sustain excellence through an inclusive and diverse community

We will draw together talent from all places and backgrounds, diversifying our faculty to ensure LSE is a vibrant and stimulating place to work, where different perspectives thrive through robust but respectful debate. Our research will continue to inform and shape our teaching, in an inspiring, supportive and intellectually challenging community of people and ideas.



Extend our impact and reach

We will collaborate with local, national and international partners to forge new connections and challenge old ways of thinking, involving our alumni, friends and partners in the process. We will use our convening power to bring global leaders, innovators and changemakers together to tackle difficult issues and deliver meaningful benefits to individuals and communities in all parts of the world.



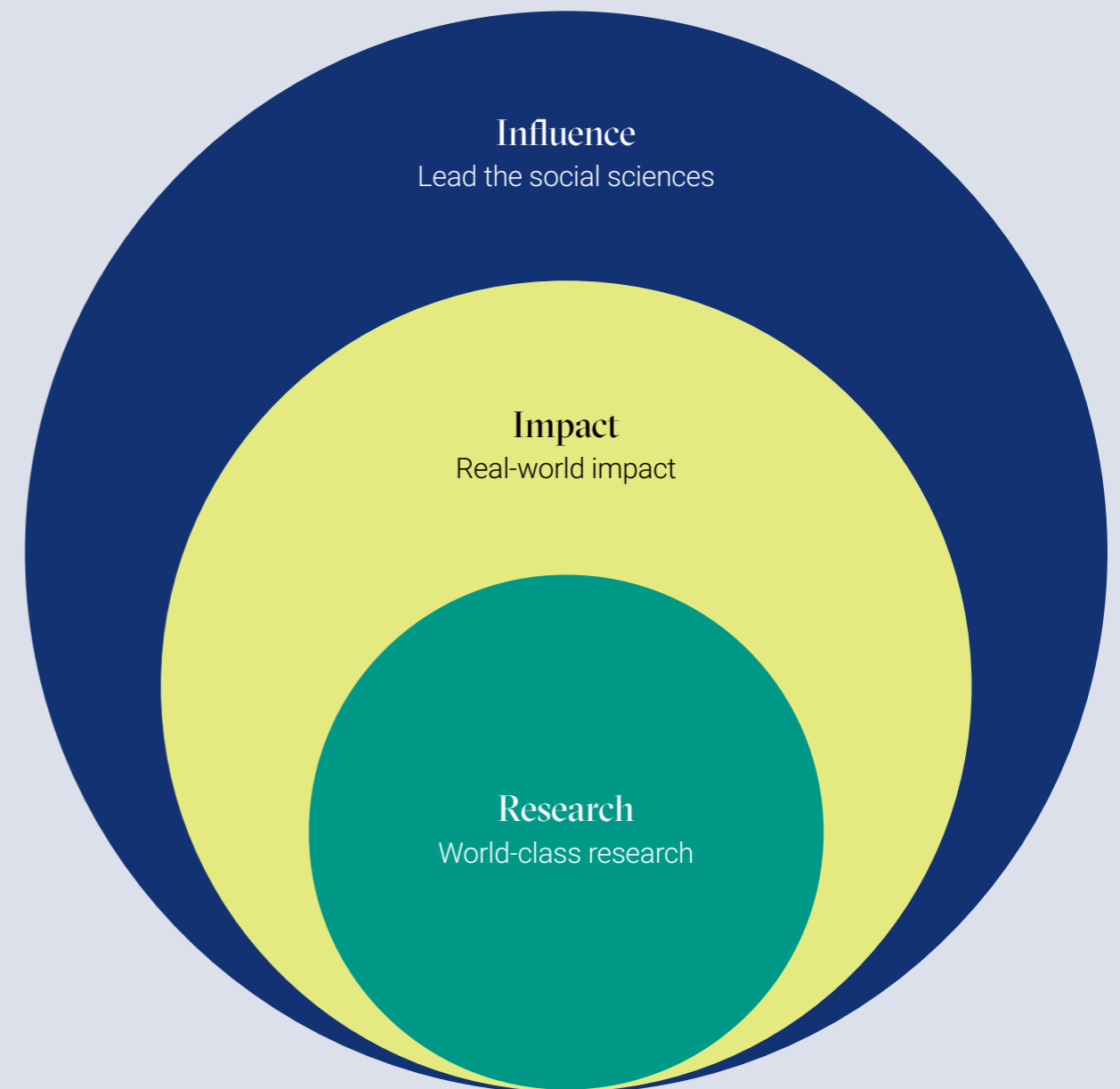
Ensure a sustainable future

We will lead the way in building a sustainable future for the social sciences, by upholding rigorous standards of enquiry, securing funding for research and scholarships, diversifying our income and making the best possible use of our resources. We will shape the global sustainability debate through our research, education and public engagement, and reduce the environmental impact of our operations.

Research for the World priorities

World-class research with global impact is at the heart of LSE's mission and underpins all of our activity and our global reputation.

We will strengthen further our research environment to nurture and support our talented researchers to produce world-leading research with impact across the breadth of the social sciences. We will champion the value and relevance of the social sciences both within and beyond academia.



World-class research

Aim

To maintain and strengthen our position as the leading global specialist social science university, through supporting and promoting research excellence across all of our research interests.

Objectives

Growing research income and contribution

Develop a sustainable and effective funding model for LSE research, enhancing external grant-raising, fundraising, partnerships, research commercialisation and consultancy activity, supported by internal seed funding.

Attracting and retaining talent

Attract, support, develop and retain a diverse community of talented academics, enabling them to deliver world-class research and impact.

Enhancing research culture and collaboration

Develop an inspiring, intellectually challenging, supportive and inclusive research environment, at every career stage, that recognises diversity and interdisciplinarity as key to research excellence. Facilitate opportunities for internal and external research engagement and collaboration, supporting interdisciplinarity, and use our established and developing stakeholder networks and partnerships to deliver meaningful research, impact and influence.

Delivery

We will successfully attract, develop and empower talented academics across the range of the social sciences, encouraging diverse research activity, improving induction, support and training, and protecting time for research. We will review how we fund research internally and develop a school-wide plan to sustainably grow and diversify research income to support world-class research with impact. We will support our academics and researchers to produce world-class research, facilitating interdisciplinarity, collaboration on shared research interests, and nourishing our research culture. We will ensure our infrastructure and professional services support are second to none so that our researchers can focus on what they do best.



Research Excellence Framework (REF) 2021

LSE was shown as the top university (of multiple submissions) in the UK based on the proportion of “world-leading” (4*) research produced and the joint second ranking university in the UK overall, when considering research outputs, research impact and research environment.

Above: Anthropology fieldwork in Madagascar, with a researcher talking to her Vezo “mother”. Photo by Sean Epstein. Below-left: “Timeless” pop-up exhibition, exploring fertility and egg-freezing. Photo by Jael Marschner.



Real-world impact

Aim

To contribute to the betterment of society through increasing the impact of our research.

Objectives

Recognising, rewarding and supporting impact

Develop and improve how we value the full range of impact activity and the professional support available to our researchers to enable them to mobilise their research effectively for public good and to communicate success.

Building new strategic partnerships

Cultivate new relationships and develop strategic partnerships with policymakers, businesses, industry, the third sector, civil society and alumni networks to increase the reach and relevance of our research.

Strengthening innovation and the entrepreneurial ecosystem

Enhance the capacity for entrepreneurship, consulting and commercialisation of LSE research by developing a thriving entrepreneurial ecosystem, promoting our benefits and impact to the research community, and harnessing the innovation potential that a research-rich education fosters in our students and alumni.

Delivery

We will improve the reward and recognition of knowledge exchange and impact activities, encouraging rich and diverse forms of impact. We will strengthen professional support for research with the potential for real-world impact. We will build strategic, mutually beneficial, national and international external partnerships, including with corporate partners. We will develop effective systems to ensure that information about research impact is monitored, tracked, and collected efficiently and improve how we communicate success. We will embed a plan for growth of research commercialisation activity, including a pipeline of socially innovative enterprises.

2030



Former LSE President, Baroness Minouche Shafik, receives the Queen's Anniversary Prize.

Award-winning impact

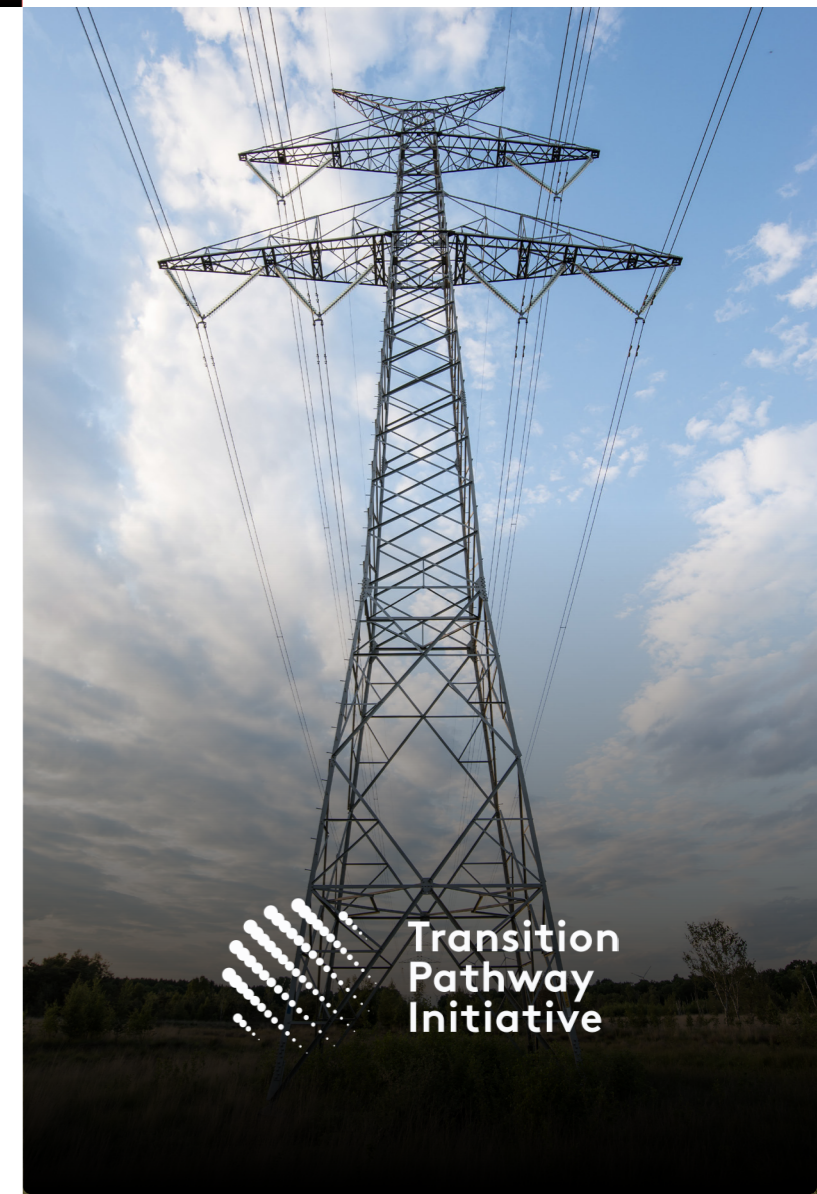
LSE Cities and The Grantham Research Institute on Climate Change and the Environment (GRI) have been awarded the Queen's Anniversary Prize: LSE Cities for "providing training, research and policy formation for cities of the future and nurturing a new generation of urban leaders around the world", and GRI for playing "a leading international role in the economics, investment policy and legislation essential for the implementation of practical measures to address climate change".

LSE's Electoral Psychology Observatory was awarded the ESRC Impact Prize 2022 for outstanding international impact for their work on improving the electoral experience of citizens.

The Transition Pathway Initiative (TPI)

The TPI is a unique investor-led partnership between a commercial data/index provider, an international NGO and LSE, providing a powerful new tool for investors who want to re-allocate their capital to low-carbon companies and engage with companies they invest in to encourage change. LSE research measures corporations' progress on transitioning to a low-carbon economy.

136 investors globally have pledged support, jointly representing over \$50 trillion combined assets. At this scale, investments informed by TPI data will materially affect the allocation of capital between clean and dirty assets, as well as change the behaviour of companies through investor actions.



Lead the Social Sciences

Aim

To take a leading role in ensuring that the social sciences are appropriately recognised, valued and funded, including their vital contribution to understanding the world and how and why it changes.

Objectives

Training and supporting future talent

Develop and train future social scientists, including PhD students and early career researchers, building the talent pool for the social sciences.

Enhancing civic engagement

Grow engagement at community level, particularly in London.

Investing in open science

Increase the visibility, accessibility and reach of LSE research to convene debate and advance understanding around key current and developing issues in the social sciences. Champion the uptake of open research practices in the social sciences.

Delivery

We will lead in training the social scientists of the future, increasing accessibility and diversity in our PhD programmes, and enhancing the package of support for doctoral students and early career researchers, for their journey into or beyond academia. We will strengthen LSE's voice as the global convener of influential debates on critical issues through improving the visibility and accessibility of our research to a wide range of audiences. We will grow our engagement with London stakeholders, further developing our outreach and anchor activity, enhancing our public affairs programme and increasing the impact of LSE research. We will use and extend our influence to ensure that the social sciences are valued and we will champion open social science research practices.

LSE Press

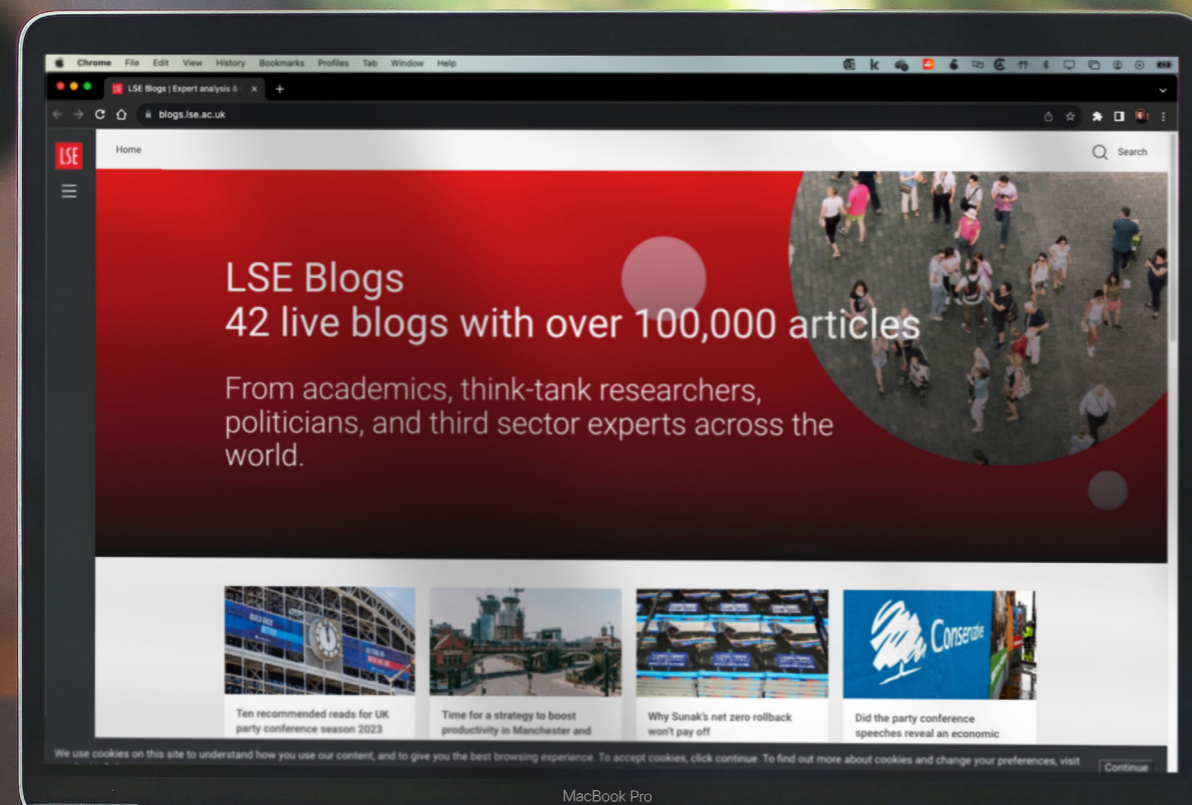
LSE Press supports the promotion of high-quality social science research and enables wide public access through the use of open, digital publication methods, publishing books and journals alongside more experimental publications. The 11 books published since 2018 have had 78,668 downloads.



LSE's annual Festival engages a wide public audience of all ages with social science research

LSE Blogs

LSE's blogs have grown into one of the world's primary digital knowledge exchange platforms for academics, students and researchers, providing evidence-based commentary and accessible summaries of academic research from across the social sciences. More than 500,000 people read blog posts and commentary from across the platform every month, covering politics, economics, social issues, urgent global challenges, and more, with over 10.4 million page views in 2022.



Create the conditions for success

Strengthening the research support lifecycle

In order to achieve our overall aims, the School will invest in state-of-the-art research facilities, technical support and data resources to enable world-class research and enhance the capacity of faculty and researchers. We will engage in broad infrastructure development which will underpin the three key areas of research, impact and influence. This will include review and adoption of the best technology options for the research management process, systems and user experience, developing library systems and services to deliver open science and digital research objectives, and improving the discoverability of and engagement with LSE research.

The successful implementation of the strategy is dependent upon an effective, efficient and flexible research support lifecycle, which ensures that we have the people, processes, systems and resources in place to support the whole research journey using an integrated approach.

Monitoring, evaluation and strategic planning

We will improve our strategic planning functions to enable LSE to anticipate and respond effectively to opportunities and challenges, including developing a repository of institutional priorities for investment in research and innovation. We will perform regular monitoring and evaluation of all relevant expenditure streams to ensure that we are supporting the right initiatives that deliver against our Research for the World strategic objectives.

Research for the World strategy

LSE 2030: SHAPE THE WORLD

2030

Produced September 2023