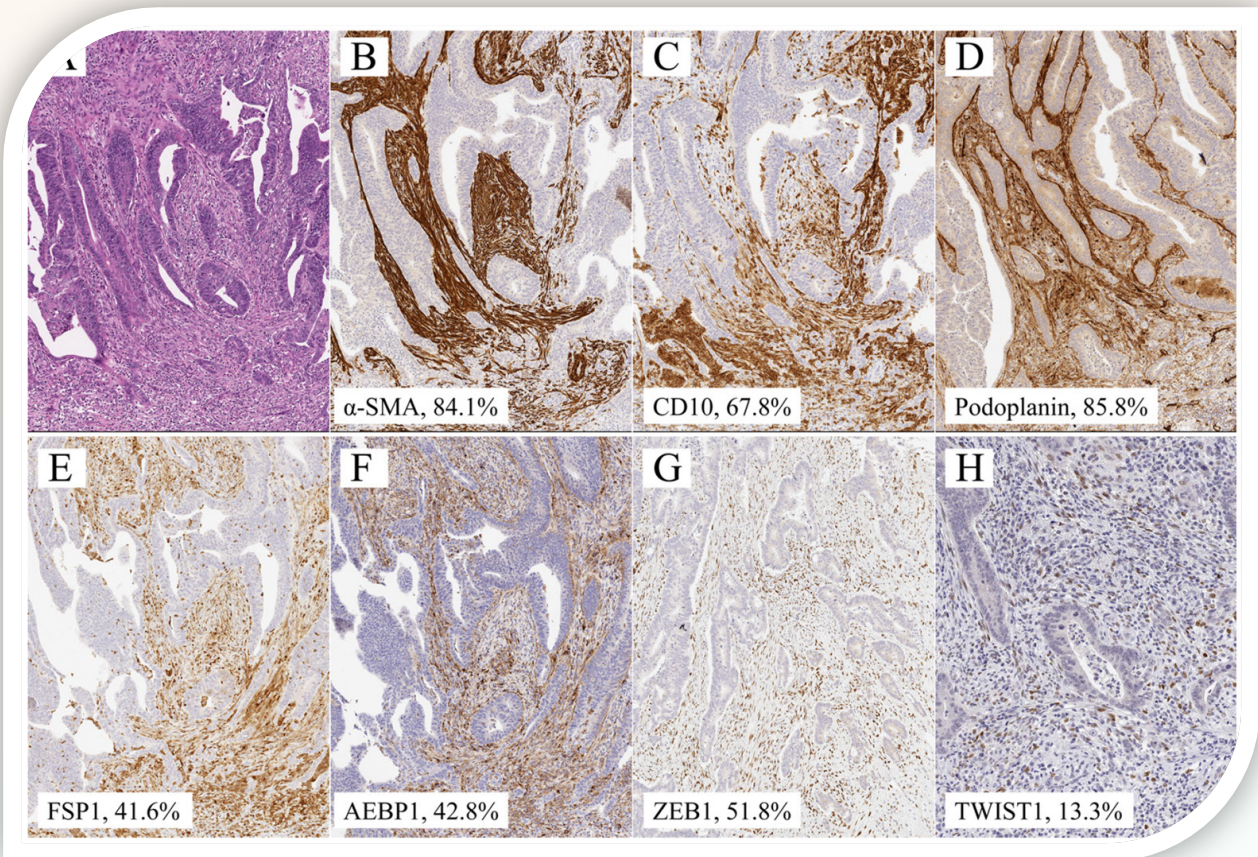


Journal of Cancer



COVER FEATURE: *Tamotsu Sugai, Noriyuki Uesugi, Yuriko Kitada, et al.* Analysis of the expression of cancer-associated fibroblast- and EMT-related proteins in submucosal invasive colorectal cancer



ISSN 1837-9664



9 771837 966005



IVYSPRING
INTERNATIONAL PUBLISHER