

Journal of Advanced Computational Intelligence and Intelligent Informatics

In Cooperation with

International Fuzzy Systems Association (IFSA),
Japan Society for Fuzzy Theory and Intelligent Informatics (SOFT),
Brazilian Society of Automatics (SBA),
The Society of Instrument and Control Engineers (SICE),
John von Neumann Computer Society (NJSZT),
Vietnamese Fuzzy Systems Society (VFSS),
Fuzzy Systems and Intelligent Technologies Research Society of Thailand (FIRST),
Korean Institute of Intelligent Systems (KIIS), and
Taiwanese Association for Artificial Intelligence (TAAI)

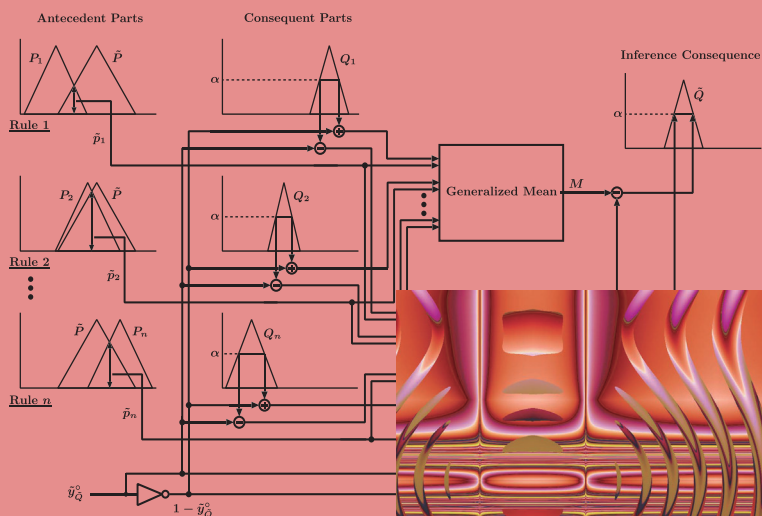
Vol. 28 No.2 Mar. 2024

Indexed in ESCI, SCOPUS,
COMPENDEX (Ei), DOAJ

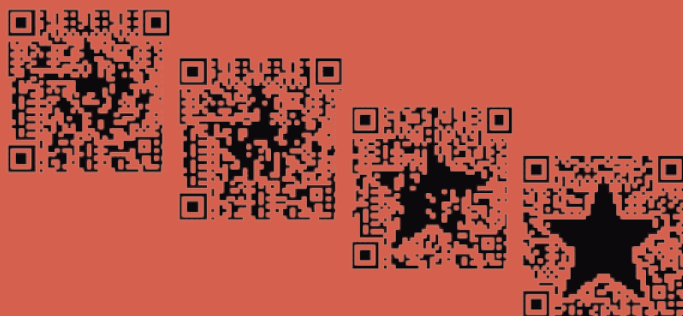
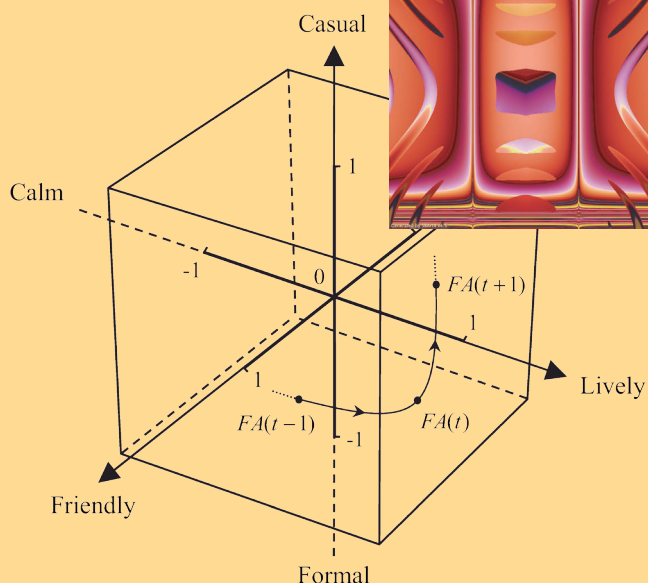
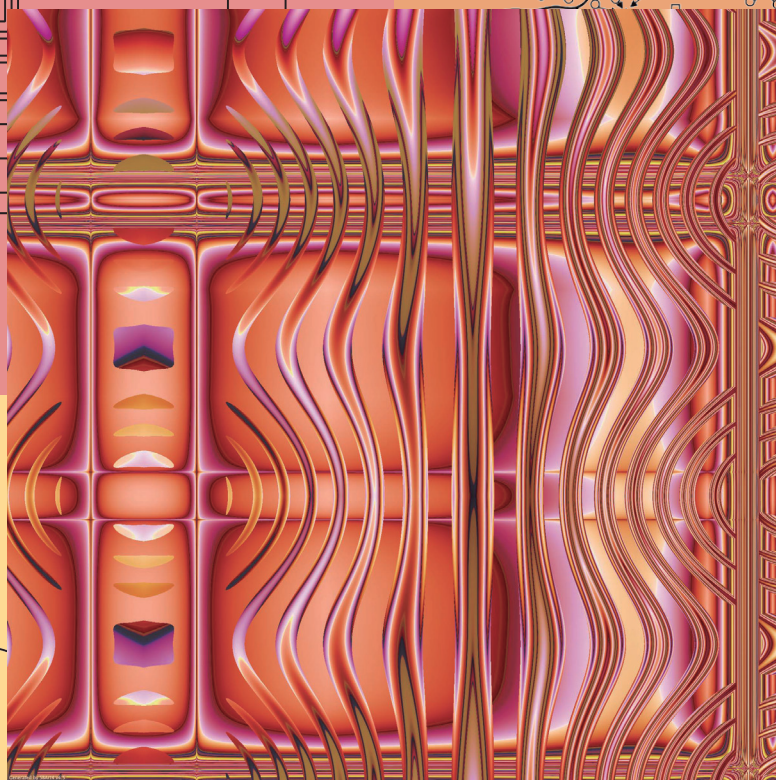
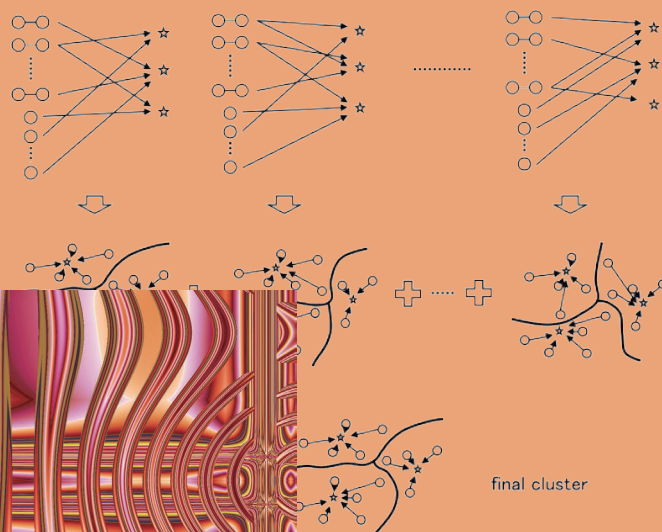
Journal of Advanced Computational Intelligence and Intelligent Informatics

Vol. 28 No.2 March

2024



change data assignment order



Cover Pictures:

Upper left:

The process of fuzzy inference based on α -cuts and generalized mean.
(Asso. Prof. Kiyohiko Uehara, Ibaraki University)

Upper right:

The process of boosting based cluster ensemble.
(Dr. Masayuki Okabe, Prefectural University of Hiroshima)

Center:

2D CG image drawn with "SBART," a simulated breeding tool.
(Prof. Tatsuo Unemi, Soka University)

Lower left:

Fuzzy atmosfield represented in 3D fuzzy cubic space.
(Dr. Zhen-Tao Liu, China University of Geosciences, China)

Lower right:

QR code decoration using module-wise non systematic coding.
(Asso. Prof. Satoshi Ono, Kagoshima University)

Printed copy: one year subscription
Institutional rate JPY 138,000

- **Gaze-Data-Based Probability Inference for Menu Item Position Effect on Information Search 303**
Yutaka Matsushita
- **Time Series Storage Method of Multi-Valued Attribute Data in Energy Big Data Center 316**
Peng Chen and Dongge Zhu
- **Temperature Control of Cement Rotary Kiln Sintering Zone Based on FCS-MPC with Soft Constraint of Generalized Triangular Interval 324**
Jian Peng, Shihui Cheng, and Wenxing Liu
- **Parameter-Free Interval Priority Weight Estimation Methods Based on Minimum Conceivable Ranges Under a Crisp Pairwise Comparison Matrix 333**
Shigeaki Innan and Masahiro Inuiguchi
- **Estimating Tomato Plant Leaf Area Using Multiple Images from Different Viewing Angles 352**
Nobuhiko Yamaguchi, Hiroshi Okumura, Osamu Fukuda, Wen Liang Yeoh, and Munehiro Tanaka
- **Document-Level Relation Extraction with Uncertainty Pseudo-Label Selection and Hard-Sample Focal Loss 361**
Hongbin Wang, Shuning Yu, and Yantuan Xian
- **Estimation of Object Handover Position Using Human-Robot Proxemics and Unsupervised Pattern Recognition 371**
Syadza Atika Rahmah and Naoyuki Kubota

Special Issue on Cutting Edge of Reinforcement Learning and its Hybrid Methods

Editorial:

- **Special Issue on Cutting Edge of Reinforcement Learning and its Hybrid Methods 379**
Kazuteru Miyazaki and Keiki Takadama

Research Papers:

- **Inverse Reinforcement Learning with Agents' Biased Exploration Based on Sub-Optimal Sequential Action Data 380**
Fumito Uwano, Satoshi Hasegawa, and Keiki Takadama

□ Estimating Objective Weights of Pareto-Optimal Policies for Multi-Objective Sequential Decision-Making.	393
Akiko Ikenaga and Sachiyo Arai	
□ Estimation of Different Reward Functions Latent in Trajectory Data	403
Masaharu Saito and Sachiyo Arai	
□ Evolutionary Competition in Small-Size Lowest Unique Integer Games	413
Takashi Yamada	
□ Hierarchical Reward Model of Deep Reinforcement Learning for Enhancing Cooperative Behavior in Automated Driving	431
Kenji Matsuda, Tenta Suzuki, Tomohiro Harada, Johei Matsuoka, Mao Tobisawa, Jyunya Hoshino, Yuuki Itoh, Kaito Kumagae, Toshinori Kagawa, and Kiyohiko Hattori	
□ Non-Contact Sleep Stage Estimation by Updating its Prediction Probabilities According to Ultradian Rhythm.	444
Iko Nakari and Keiki Takadama	
□ Proposal of a Course-Classification Support System Using Deep Learning and its Evaluation When Combined with Reinforcement Learning . . .	454
Kazuteru Miyazaki, Shu Yamaguchi, Rie Mori, Yumiko Yoshikawa, Takanori Saito, and Toshiya Suzuki	