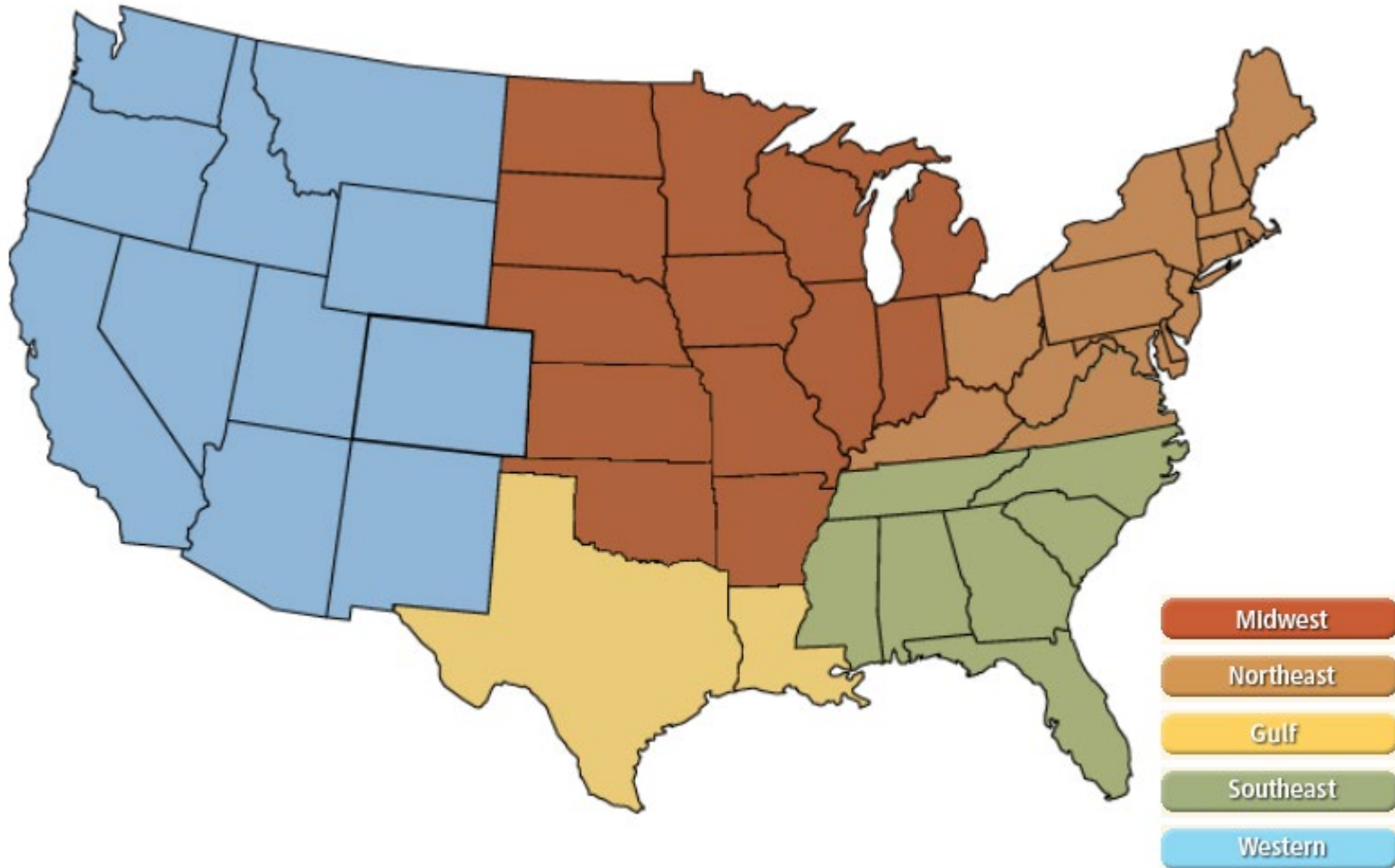
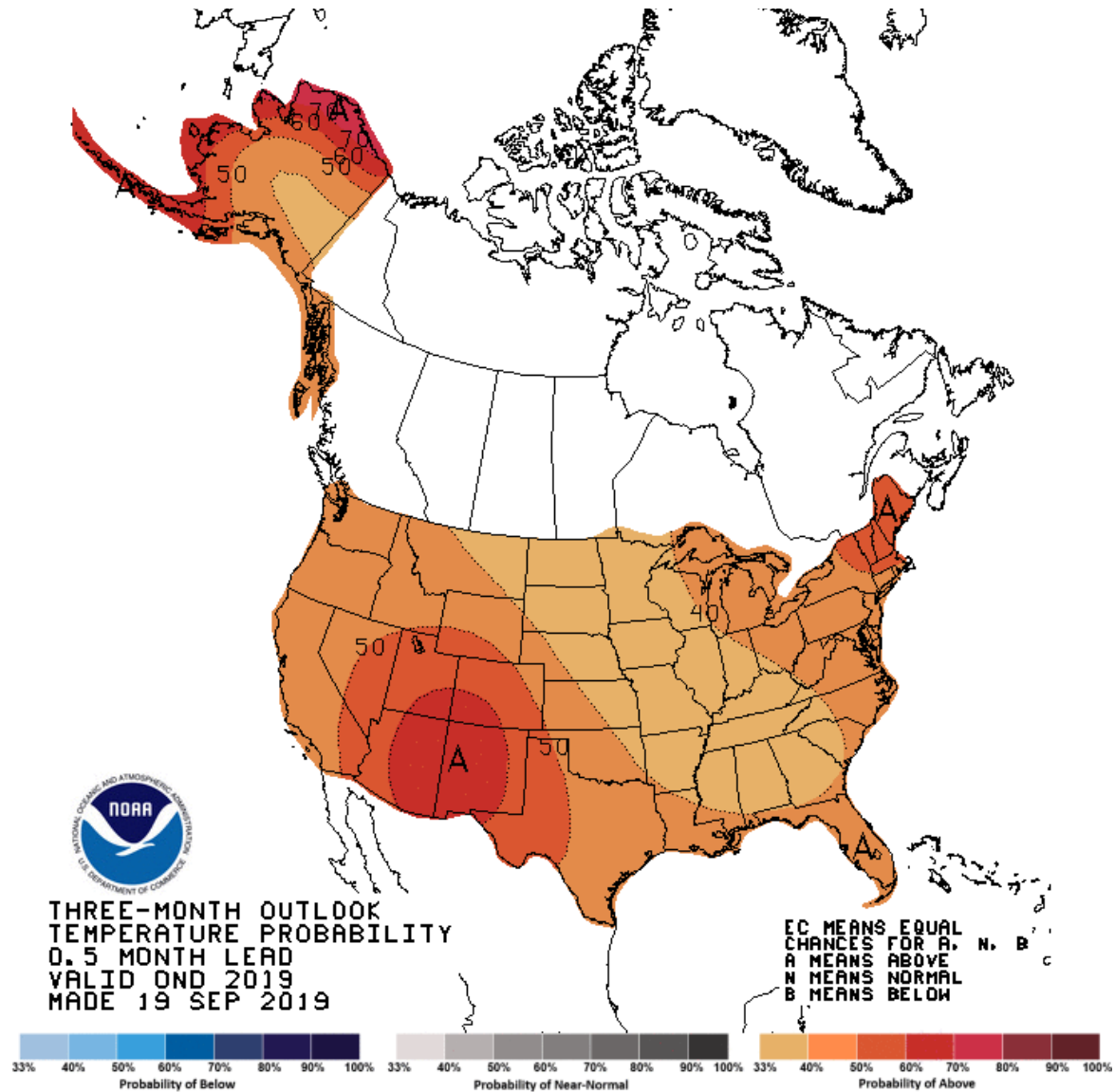


National



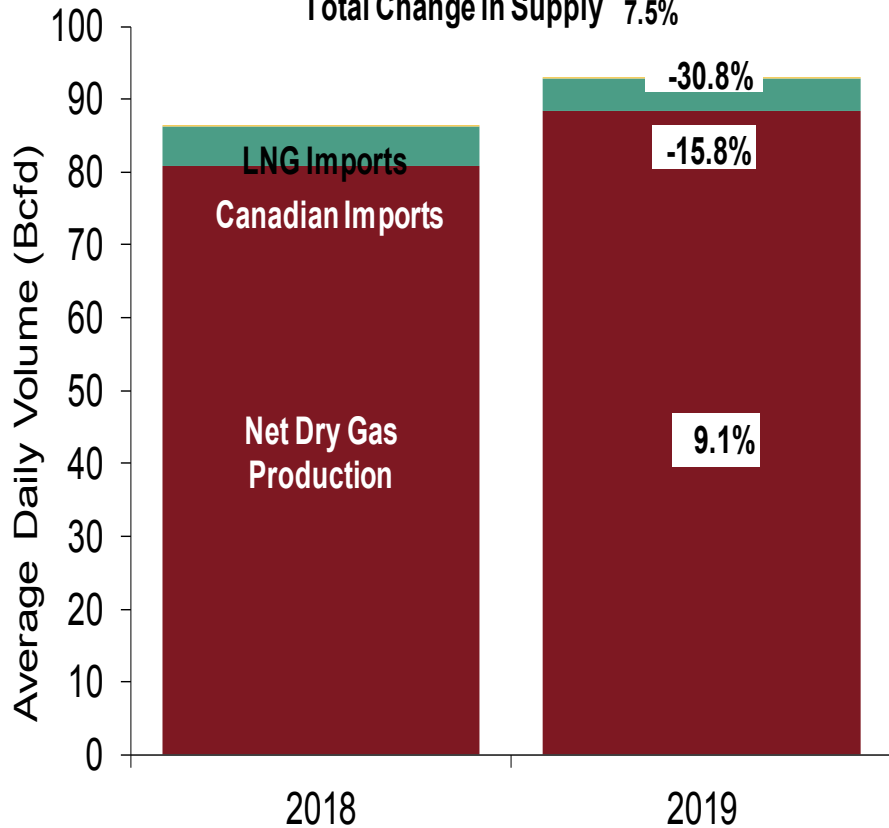
NOAA 3 Month Outlook



U.S. NG Supply and Demand Sep-18 YTD vs. Sep-19 YTD

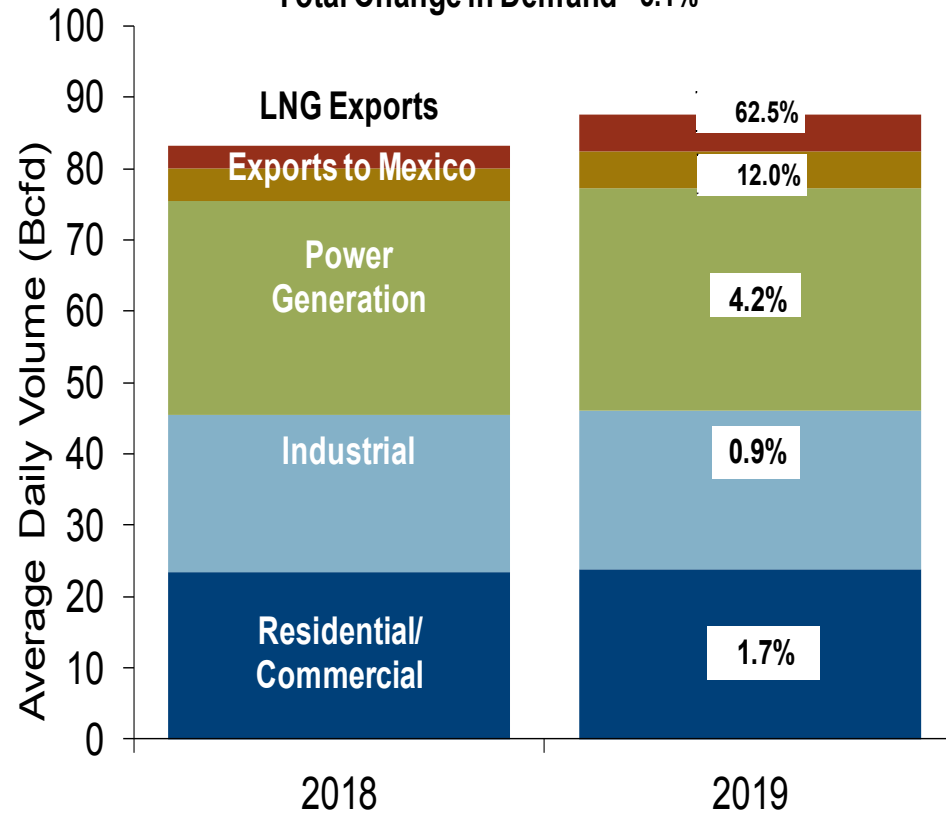
US Natural Gas Supply

Total Change in Supply 7.5%



US Natural Gas Demand

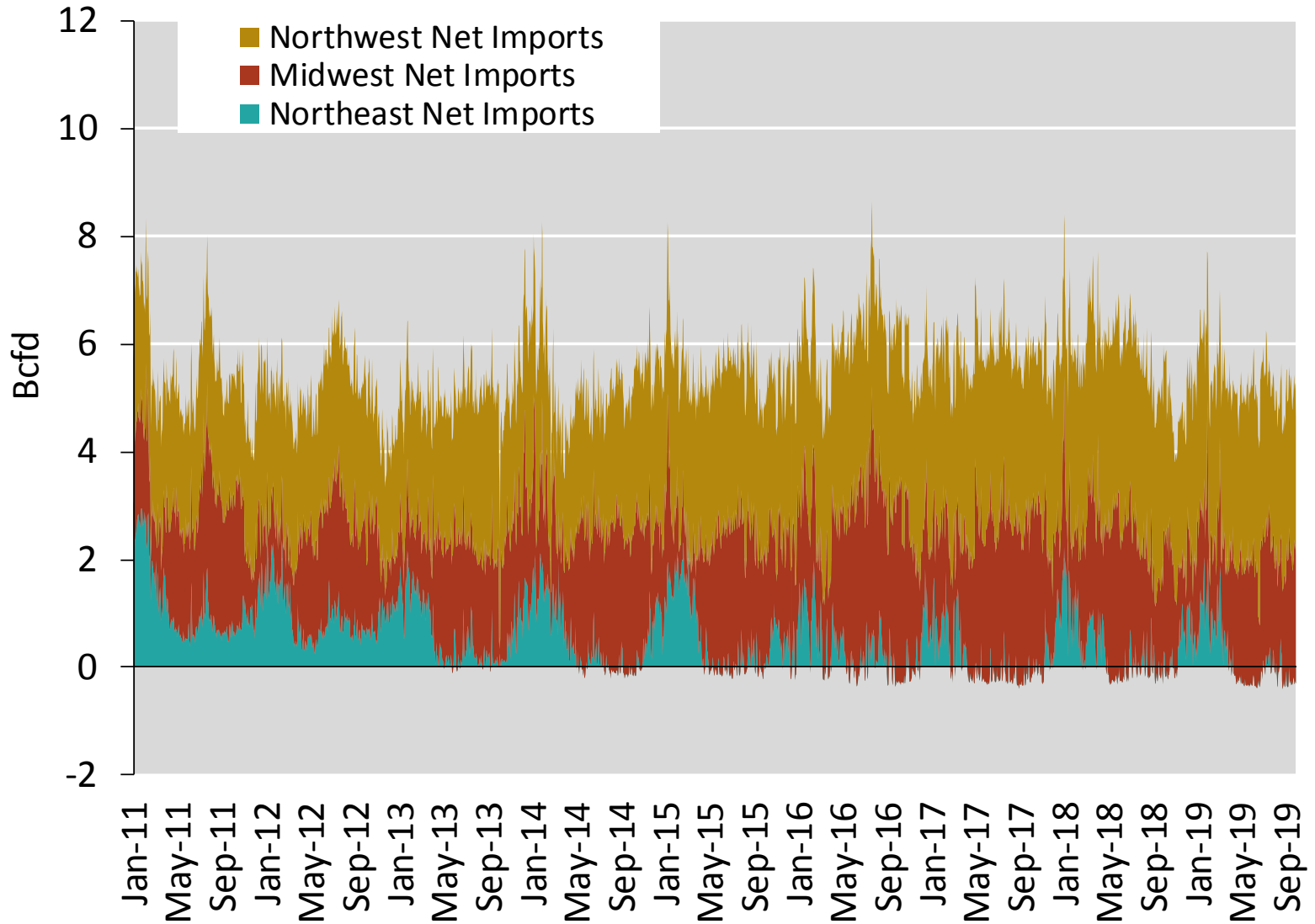
Total Change in Demand 5.1%



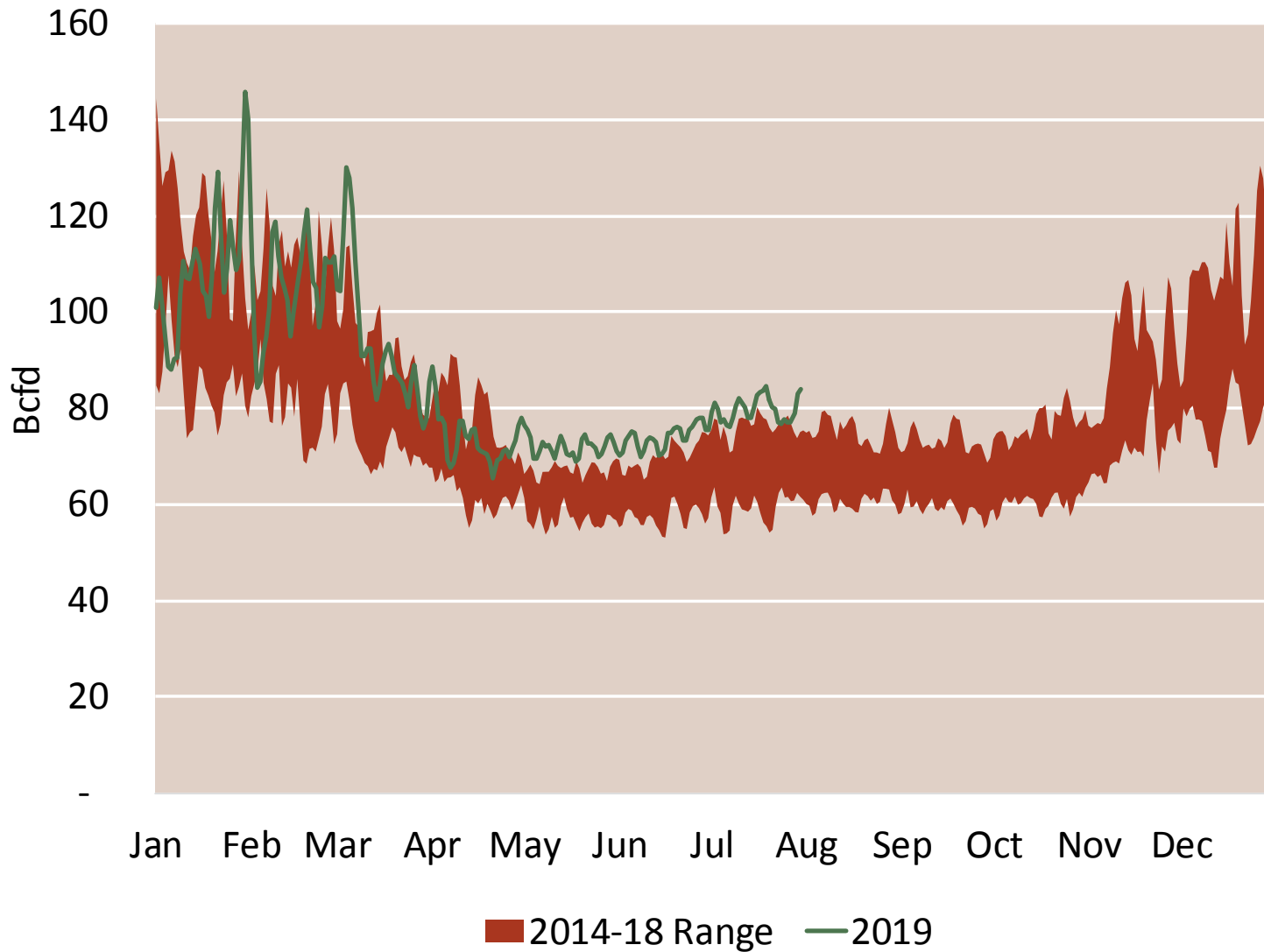
Note: Balance includes all amounts not attributable to other categories.

Source: Derived from Bentek Energy data

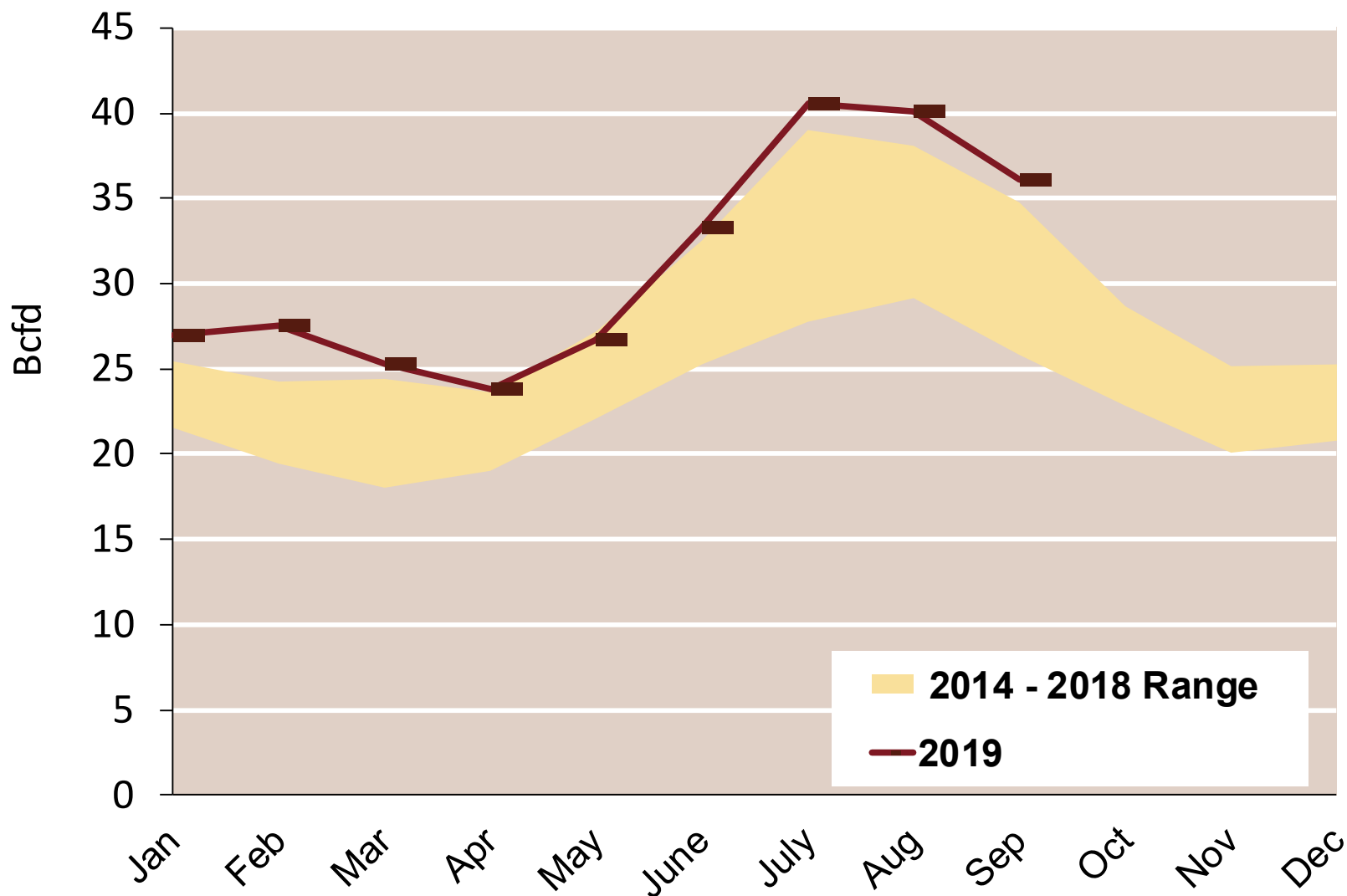
Regional Canadian Imports



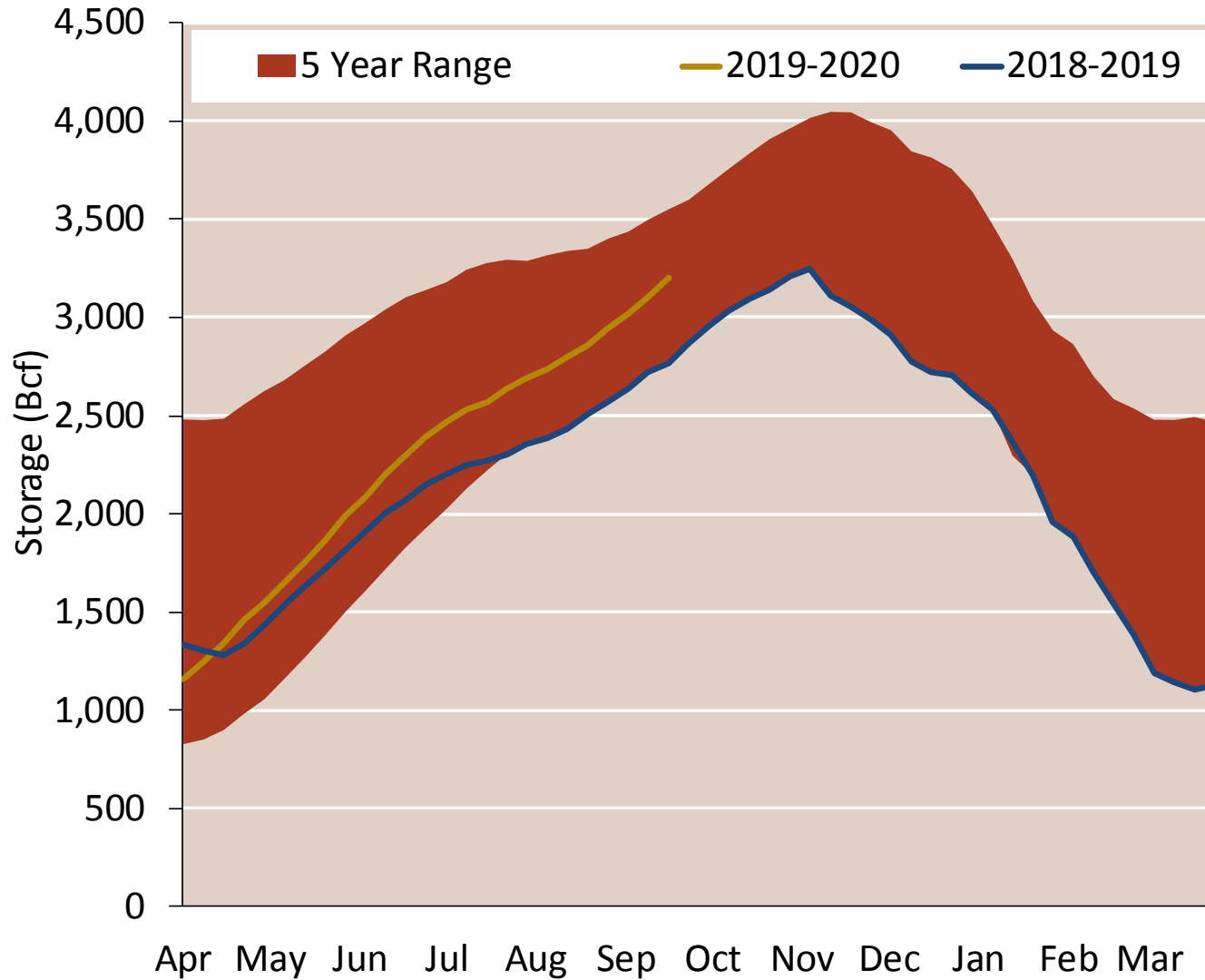
Total U.S. Natural Gas Demand All Sectors



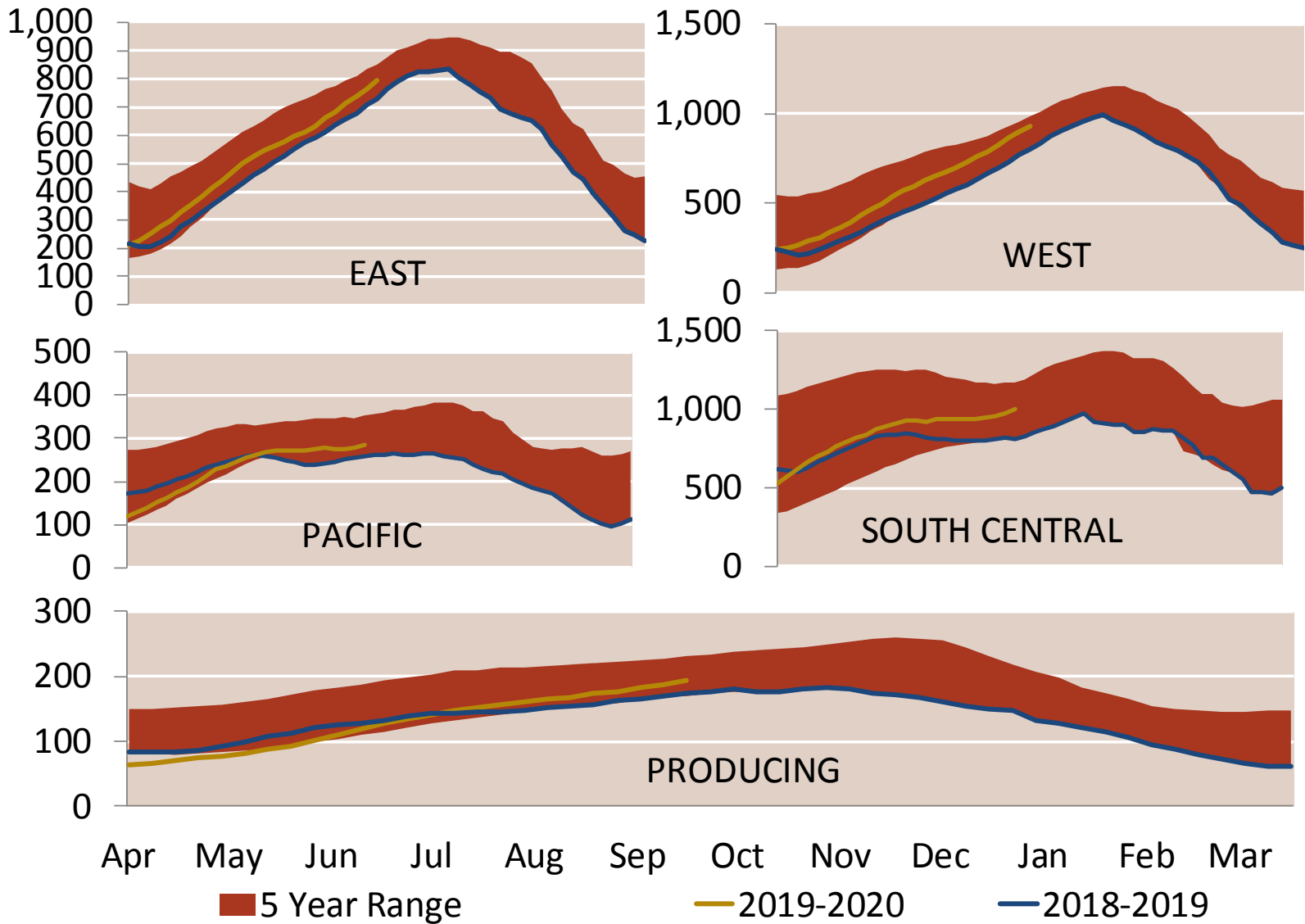
U.S. Natural Gas Consumption for Power Generation



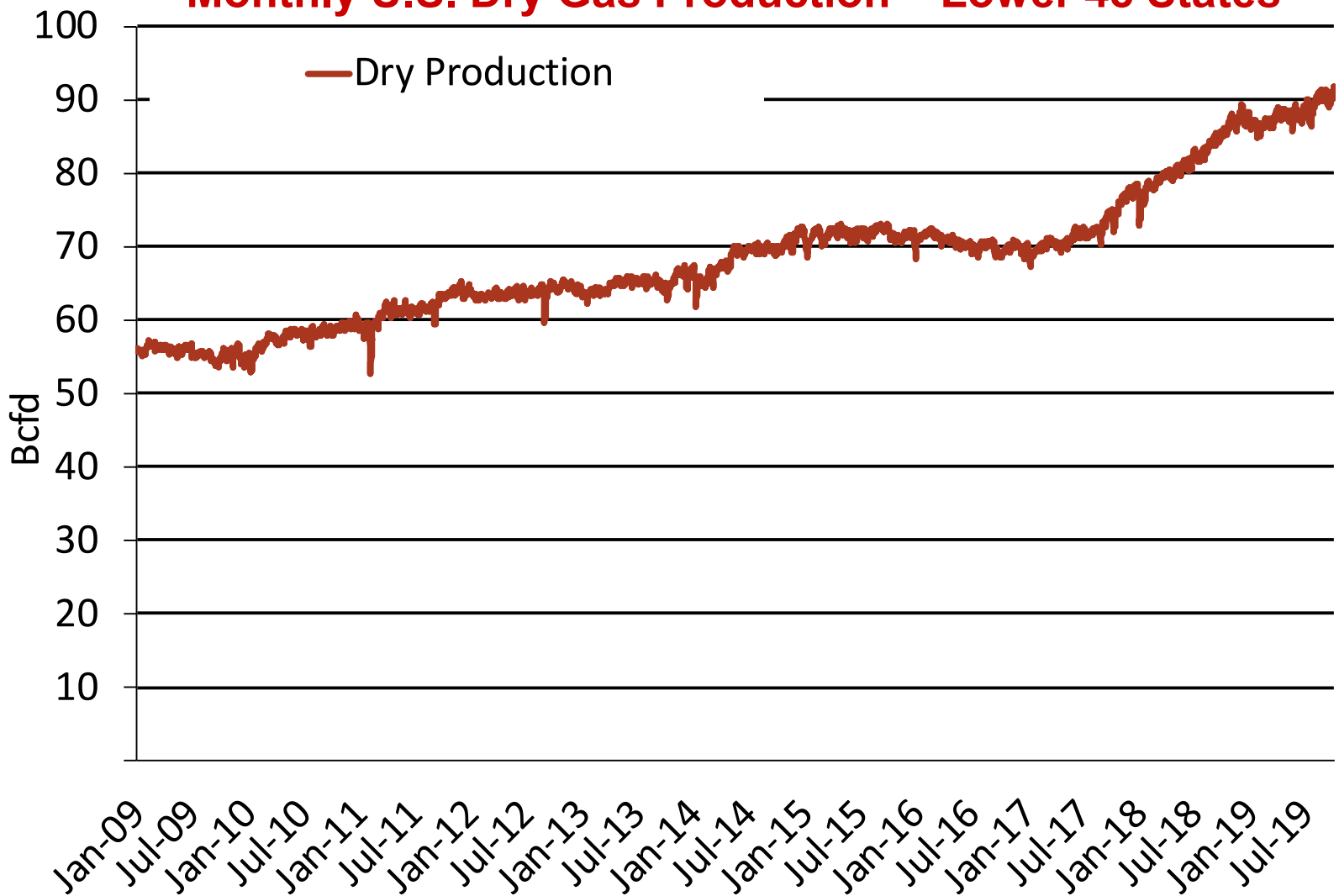
EIA Storage Inventories



EIA Storage Inventories

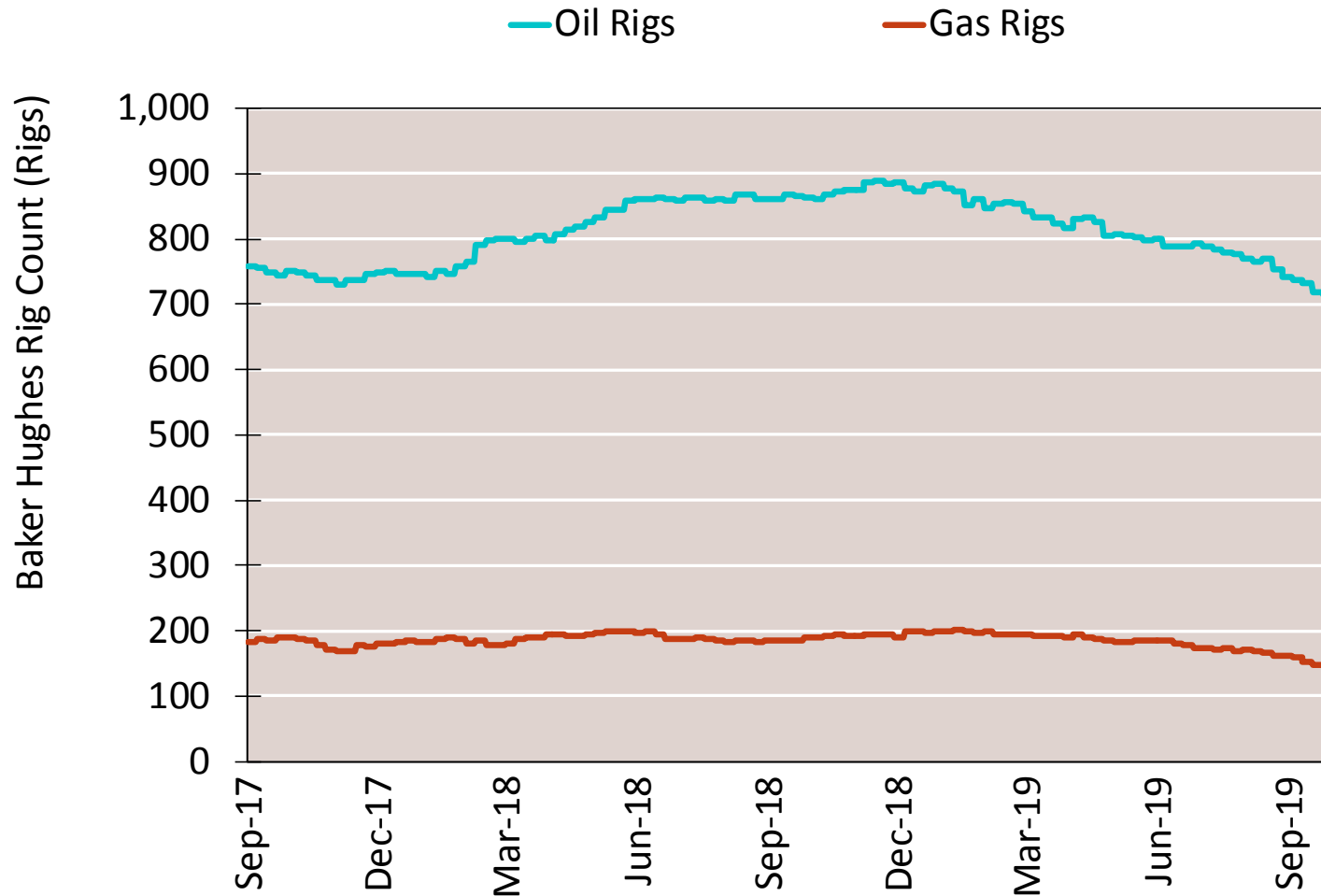


Monthly U.S. Dry Gas Production – Lower 48 States



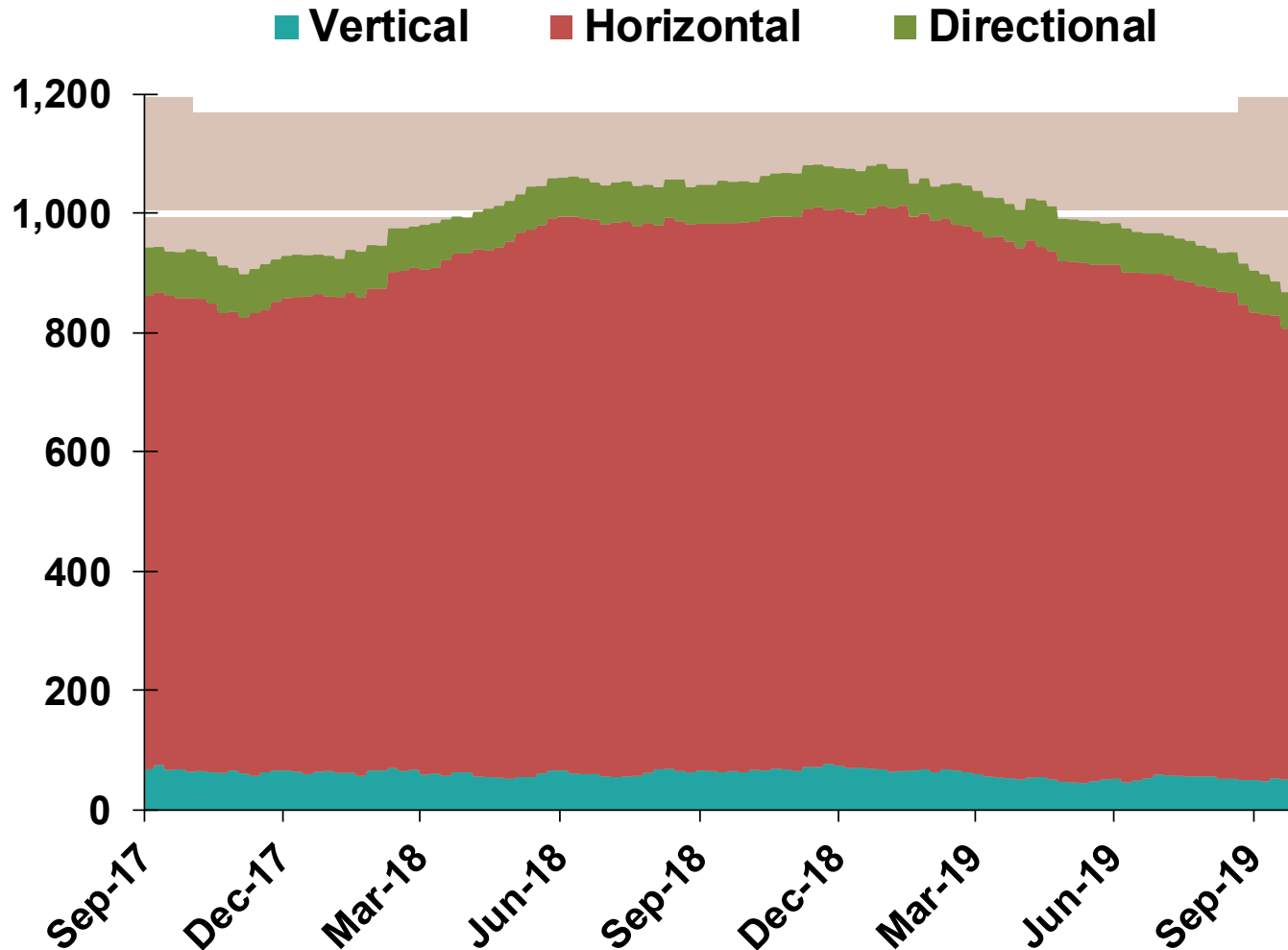
Note: Prior to July 2010, chart was derived from a combination of EIA and Bentek Energy data
Source: Derived from Bentek Energy data

NG Rigs by Fuel Type

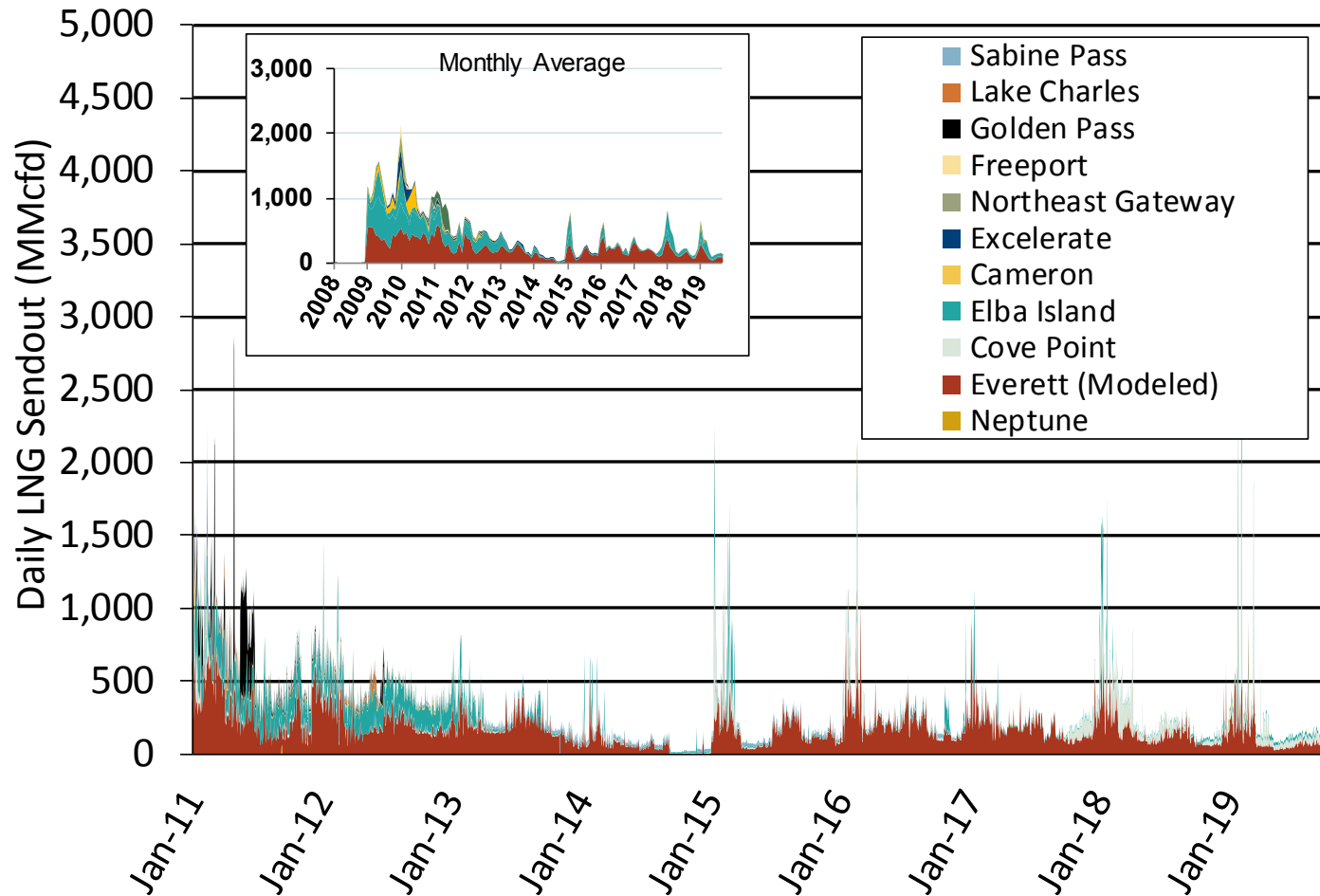


NG Rig by Direction

Baker Hughes Rigs By Drill Type



Daily Gas Sendout from Existing U.S. LNG Facilities



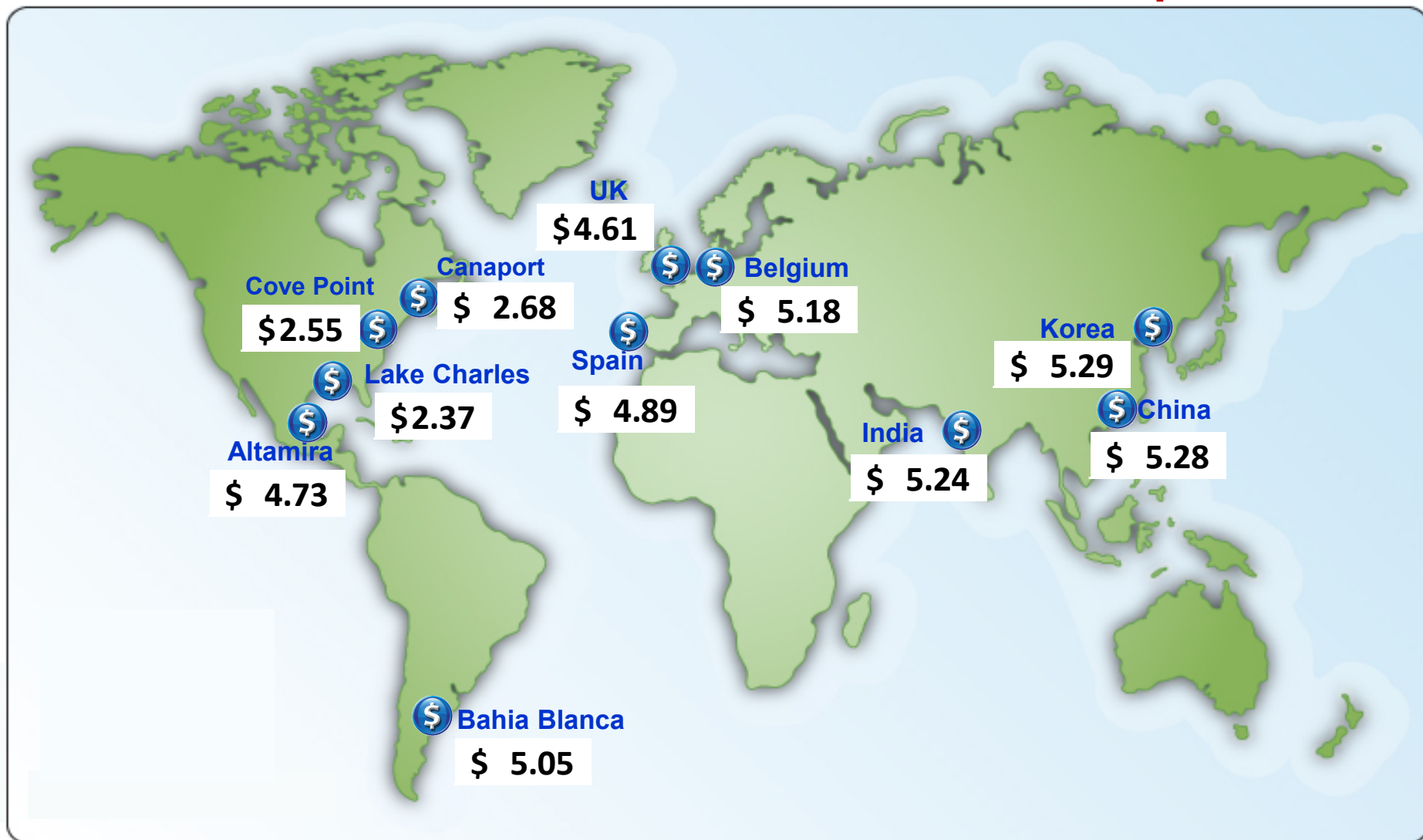
Notes: Everett data includes flows onto the AGT and TGP interstate lines, plus estimates of flows to the Mystic 7 power plant, Keyspan Boston Gas, and LNG trucked out of the terminal. Excludes flows to the Freeport LNG which flows via intrastate pipelines and flows to the Mystic 8 and 9 power plants.

Source: Derived from Bentek Energy data

Updated

Oct-2019

World LNG Estimated Landed Prices: Sep-19



Source: Waterborne Energy, Inc. Data in \$US/MMBtu.

Note: Includes information and Data supplied by IHS Global Inc. and its affiliates ("IHS"); Copyright (publication year) all rights reserved. Prices are the monthly average of the weekly landed prices for the listed month. Landed prices are based on a netback calculation.

Updated:

Oct-2019

U.S. Exports of LNG

