



Grizzly Bear Conflict Response Protocol

1) Grizzly Bear Conflict Reported.

For assistance with grizzly bear conflicts, call the nearest agency office or local conflict specialist:

	Livestock Conflicts		Non-Livestock Conflicts
Idaho	Wildlife Services Idaho Idaho Dept. of Fish & Game Tribe	(208) 373-1630 (208) 334-3700	Idaho Dept. of Fish & Game Tribe
Montana	Wildlife Services Montana Montana Fish, Wildlife & Parks Tribe	(406) 657-6464 (406) 444-2535	Montana Fish, Wildlife & Parks Tribe
Washington	Washington Dept. of Fish & Wildlife Tribe	(360) 902-2200	Washington Dept. Fish & Wildlife Tribe
Wyoming	Wyoming Game & Fish Dept. Tribe	(307) 777-4600	Wyoming Game & Fish Dept. Tribe

2) Conflict Investigation.

Investigation to confirm grizzly bear conflict and determination of next steps (e.g., trapping, hazing, no action). The decision to trap depends on human safety risk, probability of catching the bear, number of bears in the area, and other site conditions. Investigator notifies US Fish and Wildlife Service (FWS) of planned action.

3) Decision on Grizzly Bear Control Action.

When a grizzly bear is caught, the responding agency (or agencies) or Tribe recommends management action (euthanize, relocate, release bear on site) to FWS via phone. FWS makes final decision. Decisions are made on a case-by case basis in consideration of the conflict history of the bear and area, availability of relocation sites, mortality threshold of the ecosystem, health and demeanor of the bear, type of offense, and sex and age class of the bear. The Interagency Grizzly Bear Guidelines (Table 1) provide guidance to the decision, but decisions may vary due to factors not considered in the Table.

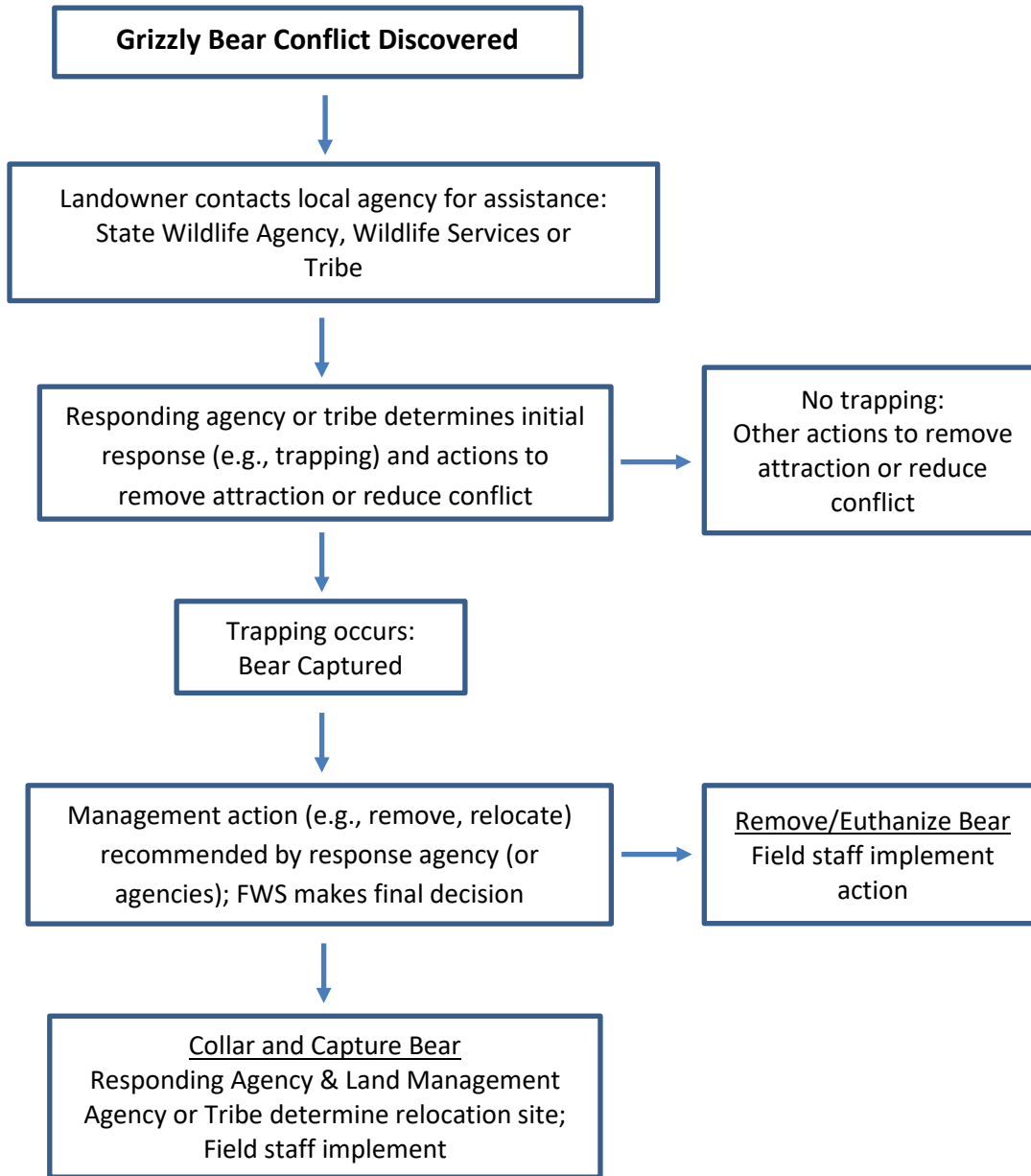
Table 1. Guidelines for Grizzly Bear Control Action (from Interagency Grizzly Bear Guidelines (1986)).

Conflict Type	Livestock Depredation or Use of Unnatural/Human Foods			Human Safety Threat		Human Injury/Death
	1	2	3	1	2	1
Female Sub-Adult	REL	REL	REM	REL	REM	REM
Female Adult	REL	REL	REM	REL	REM	REM
Female Ad w/ Young	REL	REL	REM	REL	REM	REM
Female Old Adult	REL	REM	N/A	REM	N/A	REM
Male Sub-Adult	REL	REM	N/A	REM	N/A	REM
Male Adult	REL	REM	N/A	REM	N/A	REM
Male Old Adult	REM	REM	N/A	REM	N/A	REM
Male / Female Orphaned Cub	RLS/REL	RLS/REL	RLS/REL	RLS/REL	RLS/REL	REM

REL = Relocate; REM = Removal (Euthanasia); RLS = Release on site



Flow Chart of Conflict Response Protocol



USFWS Grizzly Bear Recovery Program Contact:
University Hall, Rm 309
Missoula, MT
(406)-243-4903