

Review

Open Access

## Complications post renal transplantation: literature focus on BK virus nephropathy and diagnostic tools actually available

Monica Mischitelli<sup>1</sup>, Anna Bellizzi<sup>1</sup>, Elena Anzivino<sup>1</sup>, Daniela Fioriti<sup>1</sup>, Renzo Boldorini<sup>2</sup>, Umberto Miglio<sup>2</sup>, Fernanda Chiarini<sup>1</sup>, Franco Di Monaco<sup>3</sup> and Valeria Pietropaolo\*<sup>1</sup>

Address: <sup>1</sup>Department of Public Health Sciences, "La Sapienza" University, Rome, Italy, <sup>2</sup>Department of Medical Sciences, Faculty of Medicine, University Amedeo Avogadro of East Piedmont, Novara, Italy and <sup>3</sup>Department of Urology, "La Sapienza" University, Rome, Italy

Email: Monica Mischitelli - monicamischitelli@virgilio.it; Anna Bellizzi - bellizzi.anna@yahoo.com; Elena Anzivino - elena.anzivino@virgilio.it; Daniela Fioriti - daniela.fioriti@tin.it; Renzo Boldorini - renzo.boldorini@med.unipmn.it; Umberto Miglio - umberto.miglio@med.unipmn.it; Fernanda Chiarini - fernanda.chiarini@uniroma1.it; Franco Di Monaco - francodimonaco@interfree.it; Valeria Pietropaolo\* - valeria.pietropaolo@uniroma1.it

\* Corresponding author

Published: 3 March 2008

Received: 14 February 2008

*Virology Journal* 2008, **5**:38 doi:10.1186/1743-422X-5-38

Accepted: 3 March 2008

This article is available from: <http://www.virologyj.com/content/5/1/38>

© 2008 Mischitelli et al; licensee BioMed Central Ltd.

This is an Open Access article distributed under the terms of the Creative Commons Attribution License (<http://creativecommons.org/licenses/by/2.0>), which permits unrestricted use, distribution, and reproduction in any medium, provided the original work is properly cited.

### Abstract

Clinical diagnosis of kidney transplants related illnesses is not a simple task. Several studies were conducted to define diseases and complications after renal transplantation, but there are no comprehensive guidelines about diagnostic tools for their prevention and detection.

The Authors of this review looked for the medical literature and pertinent publications in particular to understand the role of Human Polyomavirus BK (BKV) in renal failure and to recognize analytical techniques for BK virus associated nephropathy (BKVAN) detection.

### Introduction

Clinical diagnosis of kidney transplants related illnesses is not a simple task. Several studies were conducted to define diseases and complications after renal transplantation, but there are no comprehensive guidelines about diagnostic tools for their prevention and detection.

The Authors of this review looked for the medical literature and pertinent publications in particular to understand the role of Human Polyomavirus BK (BKV) in renal failure and to recognize analytical techniques for BK virus associated nephropathy (BKVAN) detection. For reviewing we used Medline and recent pertinent bibliographies.

Kidney pathologies in renal transplants are associated with graft function, immunosuppressive drugs and infec-

tions [1]. Moreover cardiovascular, bone and bone marrow diseases, metabolism dysfunctions and cancers could affect these patients [2,3]. Graft function is the most important parameter in evaluation of the allograft status; acute rejection, obstruction, renal artery stenosis could influence renal function resulting in graft dysfunctions and ultimately in chronic renal allograft failure [1,4,5]. Persistent urinary protein excretion and hyperlipidemia are associated with acute rejection, in particular heavy proteinuria has important consequences for extracellular fluid volume regulation and demonstrate the rapid deterioration of renal function associated with pathologic glomerular lesions [6,7]. Serum creatinine levels and urine protein/creatinine ratio (total protein excretion) should be used to screen for changes in renal function. Acute allograft rejection could be also due to interstitial

infiltrates and mild tubulitis that unfortunately are clinically silent and could be detected only by immunohistochemistry (IHC) [1].

### **Immunosuppression therapy**

The morbidity and mortality rates associated with renal transplantation and the use of immunosuppressive medications are high. Conventional immunosuppression is based on azathioprine, nevertheless, other immunosuppressive drugs, such as cyclosporine A (CsA), tacrolimus, sirolimus, mycophenolate-mofetil (MMF) and corticosteroids are used [1,8]. To reduce adverse effects of immunosuppressive therapies, it is strongly recommended to monitor routinely blood level of CsA, tacrolimus and sirolimus. The nephrotoxicity associated with azathioprine and MMF is monitored by assessing hemoglobin levels, hematocrit value and white blood cell counts at least weekly for months 1 to 2, every 2 week for months 3 to 4, monthly for months 4 to 12, and then every 3 to 6 months [1,8-12]. Finally toxicity related to corticosteroids is monitored periodically by controlling blood pressure, lipoprotein levels and blood glucose levels [8,11]. Compared with conventional immunosuppression with azathioprine, CsA reduced the incidence of acute rejection and prolonged graft survival but caused chronic tubulointerstitial atrophy and fibrosis that are difficult to distinguish from chronic allograft nephropathy attributable to other causes [1,13]. Instead the role of acute and chronic tacrolimus nephrotoxicity in graft failure is unclear. However the incidence of renal toxicity is roughly proportional to tacrolimus doses and its blood levels [14]. In the other hand sirolimus seems to be efficacious in preventing acute rejection when used in place of, or in combination with, CsA. However very few studies have been conducted to determine the relationship between blood levels of sirolimus and either acute rejection or toxicity [10]. Regarding azathioprine and MMF, hematologic and gastrointestinal toxicities are usually dose-related and respond to dose reductions [12]. Moreover MMF causes leukopenia in renal transplants. Finally clinical signs of corticosteroid toxicity, which are observed relatively soon after the initiation of prednisone treatment, include skin changes, hypertension, peptic ulcer disease and myopathy [8].

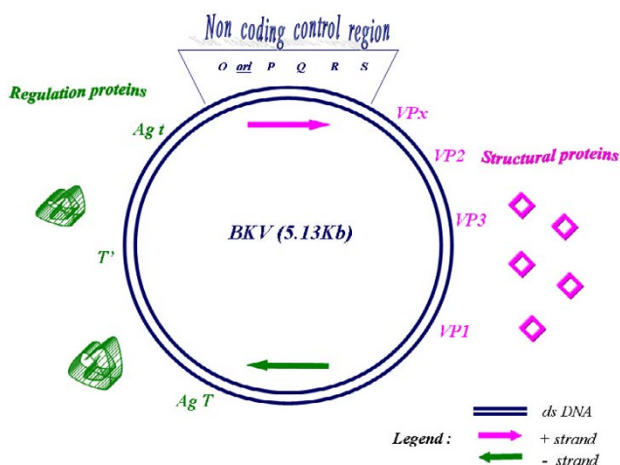
### **Human Poliovirus BK and BKVAN**

Viral infections cause several complications in renal transplants that are closely related with the immunosuppressive therapy. On the basis of literature data, viruses implicated in graft failure we could number Varicella zoster, Cytomegalovirus, Influenza A and B, Hepatitis B and C and human Poliovirus BK and JC [15-18]. In particular BK virus, described for the first time in a transplant recipient, has a remarkable tropism for the geni-

tourinary tract, in fact BKVAN are recognized as an important cause of late allograft failure [19].

BKV is ubiquitous in human populations worldwide. BKV infects young children and the seroprevalence is 70%–80% in adults [20,21]. Serologic surveys of populations, using hemagglutination inhibition assay for the detection of antibodies, indicate that seroconversion takes place early in life, at 5–7 years of age [20,21]. Primary infection is usually inapparent and only occasionally may be accompanied by mild respiratory illness or urinary tract disease. During primary infection viremia occurs and the virus spreads to several organs of the infected individual where it remains in a latent state. After the initial infection, the virus disseminates and establishes a persistent infection in the urinary tract and maybe in lymphocytes [20,22,23].

The complete genome of BKV contains 5,153 bp and it is functionally divided into three regions: the early, the late, and the transcriptional control region (TCR). The first region codes for the small and large T-antigens (t-Ag and T-Ag), the second region codes for the viral capsid proteins VP1-VP2-VP3 and agno-protein, and the last region (TCR) contains the transcriptional control elements for both "early" and "late" gene expression [24]. Primary transcripts are required for viral replication, in particular T-Ag promotes unwinding of the double helix and recruitment of cellular proteins required for DNA synthesis whereas in non permissive cells it is involved in neoplastic transformation [24,25] (Fig. 1). Late transcripts encode for viral capsid proteins and agnoprotein, that has a critical role in the regulation of viral gene expression and replication, and in the modulation of certain important host cell functions including cell cycle progression and DNA repair [26]. TCR contains the origin of replication and it is arbitrarily divided into four box alphabetically designated P, Q, R and S. These sequence blocks serve as regulatory regions, or enhancer elements believed to contain several transcription factor binding sites involved in the modulation of viral transcription [24,27,28]. It is not known that genetic alterations are essential for the pathogenesis associated with BKV after kidney transplantation, nevertheless BK-strains with rearranged TCR have been particularly described in subjects under immunosuppressive therapies [24,29,30]. In renal transplants BKV infection may be transmitted via the donor organ, may be acquired in the community or latent BKV could reactivate [31,32]. The incidence of allograft failure has ranged from 15 to 50% in affected individuals [33], but few data are available about BKVAN; it probably due to recent emerging of this disease as an important cause of allograft failure following renal transplantation. BKV urinary shedding of infected urothelial cells occurs in 10 to 60% of renal transplant recipients [34] and literature data suggest that prospective



**Figure 1**  
Schematic representation of the gene organization in the BK virus (BKV) genome. The double circle represents the double stranded DNA genomes. The genome is divided into three regions. The early region encodes three regulatory proteins (Agt, AgT, T'). The late region specifies four structural proteins and agnoprotein (VP1, VP2, VP3, VPx). The non-coding control region contains the elements for the control of viral DNA replication (ori) and viral gene expression. The arrows indicate the positive and negative strands according to the direction of viral transcription (24).

monitoring of patients at risk for BKVAN may identify those with active infection before renal function deteriorates [35-37]. Recent studies demonstrated that BKVAN develop in as many as 8% of renal allograft recipients, with as many as 50% of patients experiencing graft loss over the next 2 to 3 years of follow-up [34,38,39]. A current study performed by Giraldi et colleagues show that, in a cohort of the 117 patients followed up every three months during a two year period after transplantation, 4 had BKVAN (3.4%) confirmed by quantitative assays on plasma and urine and assessed by allograft biopsy [40].

**BKVAN diagnosis**

BKVAN diagnosis is very difficult since this disease is often misdiagnosed as acute rejection or drug toxicity. Diagnostic tools available include histopathology by means of renal allograft biopsy, detection of BKV DNA on plasma and urine by polymerase-chain-reaction (PCR) and quantitative PCR (QPCR) and presence of "decoy cells" in the urine sediment. Diagnostic confirmation may be obtained using IHC, in situ hybridization (ISH), and/or electron microscopy (EM) in renal biopsy specimens [34,41-45].

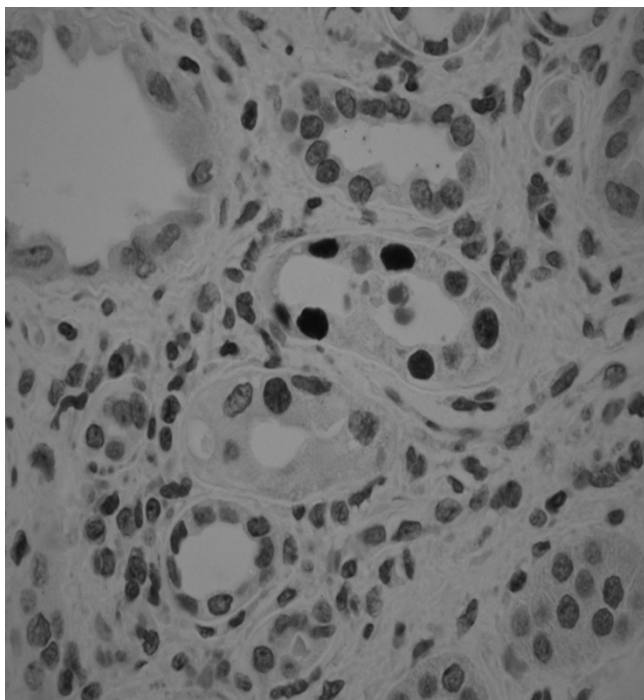
Early identification provides the opportunity for intervention with reduction of the immunosuppression in an effort to control BKV replication and prevent BKVAN. The

risk factors predisposing to BKVAN appear to be multiple, with immunosuppressive regimens containing tacrolimus and MMF representing recognized associations [41,46]. Several investigators have begun to define risk factors for BKV disease among renal transplant recipients. The serologic status of the donor and the recipient appears to be a predictor of BKV infection, but it is not currently clear whether it influences the development of BKV nephritis. Tubular injury could be a factor promoting viral replication in an immunocompromised state induced by tacrolimus or MMF. The load of dormant BKV in the grafted organ is likely to be another important risk factor: no dormant virus, no re-activation and most likely, no BKVAN [47]. On these basis, since no specific anti-viral therapy is available, reduction in immunosuppression remains the mainstay of treatment with an increased risk of subsequent rejection. Therefore an accurate diagnosis is important, as it allows for early intervention and possible recovery of renal function.

Urine cytology is based on decoy cells recovery. Decoy cells are epithelial cells with enlarged nuclei and large basophilic ground-glass intranuclear viral inclusions, screening for their presence provides a simple and an inexpensive tool for the diagnosis of BKV nephropathy, nevertheless, Papanicolaou-stained urine sediment is not to be considered a specific morphological marker of BKV disease [48,49].

Electron microscopy is very sensitive for detection of BK virions, but the finding of viral particles is not diagnostic of BKVAN, since the ultrastructural appearance of BK virus is poorly typical. Virions are arranged in paracrystalline arrays of naked, round, electron-dense structures that measure 45 nm in diameter. It is important to emphasize that electron microscopy cannot distinguish BKV from JC virus [41] (Fig. 2).

The histological diagnosis of BKVAN requires evaluation of a renal biopsy with demonstration and confirmation of the polyomavirus cytopathic changes by IHC and ISH [41]. BKVAN is characterized by the presence of polyomavirus cytopathic changes in the epithelium of the renal tubules and urothelial lining. The infected cells have an enlarged nucleus with a gelatinous basophilic inclusion resulting from the accumulation of the newly formed virions [50]. Confirmation of the polyomavirus infection is usually performed with immunohistochemical stains for the simian virus 40 (SV40) large T antigen (AgT), which identifies all polyomavirus infections due to cross-reactivity between SV40 and both BKV and JCV. Distinction between the different types of polyomavirus requires the use of species-specific antibodies, ISH or in situ PCR. Systematic studies comparing the clinical utility of each method have not been performed [50]. The sections are



**Figure 2**  
Immunohistochemistry, peroxidase stain, diaminobenzidine as marker, staining for BK polyoma virus with the antibody targeting the SV40 antigen. Note easily detectable, strong nuclear immunoreactivity in tubular cells. (350×), (41).

stained with hematoxylin-eosin and examined by means of light microscopy in order to evaluate the integrity of the tissue before proceeding to molecular analysis, to identify possible pathologic changes, and in particular to search for the presence of morphologic equivalents of cellular polyomavirus infection. In situ hybridization and immunohistochemistry are carried out to define the viral status of the infected tissues. The reactions are detected by means of the streptavidin-biotin method and are revealed using diaminobenzidine as a chromogen. In situ hybridization is performed to localize the nucleic acid sequences of BKV and JCV at the subcellular level using commercially available biotinylated DNA probes [51].

For efficient early diagnosis of BKVAN, various molecular approaches are recommended. Quantitative PCR is a non-invasive method clinically useful since it is high sensitive and specific and it supplies quantitative data that allow pharmacological therapy management by clinicians because specific antiviral therapy for BKVAN does not currently exist and the reduction in immunosuppression depend on viral loads in urine and plasma specimens of kidney transplants [32,33,36,52]. Nevertheless it is important to underlie that the relationship between BKV viruria and viremia, the cut-offs and predictive values of

BKV viruria and viremia for the occurrence of BKVAN, are still largely undefined [33]. In fact some literature studies from 2004 to nowadays showed that measurements of BKV viruria and BKV viremia have a different prognostic value for patient's therapeutic response and duration of therapy. In accordance with Drachenberg et colleagues BKV viruria precedes BKV viremia and it is a prerequisite for histologically proven BKVAN because the viral replication within the graft finally leads from viruria to viremia [53]. This hypothesis is also sustained by other Authors that maintained that viremia is not present in patients with low-level/limited viral replication in the urinary tract [34,43,44,52,54]. Moreover, in relation to these Authors, viremia is not useful for screening because of blood inhibitors present in plasma sample. Finally, although analytical and physiological variations may be significant when comparing viral urine load in patients with BKVAN, there is general agreement that repeated values above  $10^7$  BKV copies per milliliter are associated with BKVAN [32,53]. On the other hand a recent study performed by Basse et collaborators suggested that BKV viremia is a rare event after renal transplantation but it has emerged as the most specific test for BKV associated nephropathy [55]. Some Authors retain BKV viremia as the standard for BKVAN diagnosis since the presence of the virus in the blood represents a significant tissue damage and confirm the renal parenchymal involvement [37,56]. Therefore serial determinations of BK viremia are the best tool to demonstrate resolution of the disease after immunosuppression has been decreased [37,55-58]. Nevertheless, a study carried out by Hymes et colleagues from June 2003 to January 2006 on 20 renal transplant children showed that most patients remained PCR-positive despite reduction of immunosuppression. Moreover they did not identify any one drug as more prevalent among patients with BK viremia [59].

### Conclusion

In conclusion, there are several aspects of BKVAN pathology in kidney transplant patients requiring evaluation; it includes BKV transmissibility within kidneys transplanted, target organ effects, risk factors, time frame of reactivation and the best treatment options. Therefore it is essential to understand and to monitor the delicate balance between viral infection, immune regulation in the transplant population and immunosuppressive therapy in order to minimize viral injury and rejection risk to patients with BKV infection. Measuring of BKV DNA in urine and serum is an useful and non invasive tool for early detection and monitoring, nevertheless a combined approach of molecular techniques must be utilized to identify BK virus-associated nephropathy at an early phase facilitating well timed clinical intervention.

## References

1. Kasiske BL, Vazquez MA, Harmon WE, Brown RS, Danovitch GM, Gaston RS, Roth D, Scandling JD, Singer GG, for the American Society of Transplantation: **Recommendations for the outpatient surveillance of renal transplant recipients.** *J Am Soc Nephrol* 2000, **11**:S1-S86.
2. Jeloka TK, Ross H, Smith R, Huang M, Fenton S, Cattran D, Schiff J, Cardella C, Cole E: **Renal transplant outcome in high-cardiovascular risk recipients.** *Clin Transplant* 2007, **21**:609-614.
3. Matignon M, Dahan K, Fruchaud G, Audard V, Grimbert P, Lang P: **Kidney transplantation: indications, results, limitations, and perspectives.** *Presse Med* 2007, **36**:1829-1834.
4. Foster CE, Weng RR, Smith CV, Imagawa DK: **The influence of organ acceptance criteria on long-term graft survival: outcomes of a kidney transplant program.** *Am J Surg* 2007, **195**:149-152.
5. Johnston O, O'Kelly P, Spencer S, John Donohoe, Walshe JJ, Little DM, Hickey D, Conlon PJ: **Reduced graft function (with or without dialysis) vs immediate graft function—a comparison of long-term renal allograft survival.** *Nephrol Dial Transplant* 2006, **21**:2270-2274.
6. Sancho A, Gavela E, Avila A, Morales A, Fernández-Nájera JE, Crespo JF, Pallardo LM: **Risk factors and prognosis for proteinuria in renal transplant recipients.** *Transplant Proc* 2007, **39**:2145-2147.
7. Schaub S, Mayr M, Hönger G, Bestland J, Steiger J, Regeniter A, Mihatsch MJ, Wilkins JA, Rush D, Nickerson P: **Detection of subclinical tubular injury after renal transplantation: comparison of urine protein analysis with allograft histopathology.** *Transplantation* 2007, **84**:104-112.
8. Braun WE: **Renal transplantation: basic concepts and evolution of therapy.** *J Clin Apher* 2003, **18**:141-152.
9. Böhmig GA, Regele H, Hörl WH: **Protocol biopsies after kidney transplantation.** *Transpl Int* 2005, **18**:131-139.
10. Goldsmith D, Al-Khoury S, Shah N, Covic A: **Anaemia after renal transplantation—role of immunosuppressive drugs and a pathophysiological appraisal.** *Nephron Clin Pract* 2006, **104**:69-74.
11. Goldfarb S: **Update in nephrology.** *Ann Intern Med* 2008, **148**:49-54.
12. Shipkova M, Armstrong VW, Oellerich M, Wieland E: **Mycophenolate mofetil in organ transplantation: focus on metabolism, safety and tolerability.** *Expert Opin Drug Metab Toxicol* 2005, **1**:505-526.
13. Vitko S, Viklický O: **Cyclosporine renal dysfunction.** *Transplant Proc* 2004, **36**:2435-2475.
14. Scott LJ, McKeage K, Keam SJ, Plosker GL: **Tacrolimus: a further update of its use in the management of organ transplantation.** *Drugs* 2003, **63**:1247-1297.
15. Drachenberg CB, Hirsch HH, Papadimitriou JC, Gosert R, Wali RK, Munivenkatappa R, Nogueira J, Cangro CB, Haririan A, Mendley S, Ramos E: **Polyomavirus BK versus JC replication and nephropathy in renal transplant recipients: a prospective evaluation.** *Transplantation* 2007, **84**:323-330.
16. Fishman JA, Emery V, Freeman R, Pascual M, Rostaing L, Schlitt HJ, Sgarabotto D, Torre-Cisneros J, Uknis ME: **Cytomegalovirus in transplantation—challenging the status quo.** *Clin Transplant* 2007, **21**:149-158.
17. Linares L, Cofán F, Cervera C, Ricart MJ, Oppenheimer F, Campistol JM, Moreno A: **Infection-related mortality in a large cohort of renal transplant recipients.** *Transplant Proc* 2007, **39**:2225-2227.
18. Schweitzer EJ, Perencevich EN, Philosophe B, Bartlett ST: **Estimated benefits of transplantation of kidneys from donors at increased risk for HIV or hepatitis C infection.** *Am J Transplant* 2007, **7**:1515-1525.
19. Randhawa P, Vats A, Shapiro R: **The pathobiology of polyomavirus infection in man.** *Adv Exp Med Biol* 2006, **577**:148-159.
20. Knowles WA: **Discovery and epidemiology of the human polyomaviruses BK virus (BKV) and JC virus (JCV).** *Adv Exp Med Biol* 2006, **577**:19-45.
21. Lundstig A, Dillner J: **Serological diagnosis of human polyomavirus infection.** *Adv Exp Med Biol* 2006, **577**:96-101.
22. Ashok A, Atwood VJ: **Virus receptors and tropism.** *Adv Exp Med Biol* 2006, **577**:60-72.
23. Doerries K: **Human polyomavirus JC and BK persistent infection.** *Adv Exp Med Biol* 2006, **577**:102-116.
24. Fioriti D, Videtta M, Mischitelli M, Degener AM, Russo G, Giordano A, Pietropaolo V: **The human polyomavirus BK: Potential role in cancer.** *J Cell Physiol* 2005, **204**:402-406.
25. Lee W, Langhoff E: **Polyomavirus in human cancer development.** *Adv Exp Med Biol* 2006, **577**:310-318.
26. Khalili K, White MK, Sawa H, Nagashima K, Safak M: **The agnoprotein of polyomaviruses: a multifunctional auxiliary protein.** *J Cell Physiol* 2005, **204**:1-7.
27. Hirsch HH, Steiger J: **Polyomavirus BK.** *Lancet Infect Dis* 2003, **3**:611-623.
28. Kim HS, Henson JW, Frisque RJ: **Transcription and replication in the human polyomaviruses.** In *Human Polyomaviruses* Edited by: Wiley-Liss. INC. New York; 2001:73-126.
29. Agha I, Brennan DC: **BK virus and immunosuppressive agents.** *Adv Exp Med Biol* 2006, **577**:174-184.
30. Randhawa P, Zygmunt D, Shapiro R, Vats A, Weck K, Swalsky P, Finkelstein S: **Viral regulatory region sequence variations in kidney tissue obtained from patients with BK virus nephropathy.** *Kidney Int* 2003, **64**:743-747.
31. Hariharan S: **BK virus nephritis after renal transplantation.** *Kidney Int* 2006, **69**:655-662.
32. Hirsch HH: **BK virus: opportunity makes a pathogen.** *Clin Infect Dis* 2005, **41**:354-360.
33. Djamali A, Samaniego M, Muth B: **Medical care of kidney transplant recipients after the first posttransplant year.** *Clin J Am Soc Nephrol* 2006, **1**:623-640.
34. Pang XL, Doucette K, LeBlanc B, Cockfield SM, Preiksaitis JK: **Monitoring of polyomavirus BK virus viremia and viremia in renal allograft recipients by use of a quantitative real-time PCR assay: one-year prospective study.** *J Clin Microbiol* 2007, **45**:3568-3573.
35. Drachenberg CB, Beskow CO, Cangro CB, Bourquin PM, Simsir A, Fink J, Weir MR, Klassen DK, Bartlett ST, Papadimitriou JC: **Human polyomavirus in renal allograft biopsies: morphological findings and correlation with urine cytology.** *Hum Pathol* 1999, **30**:970-977.
36. Hirsch HH, Knowles W, Dickenmann M, Passweg J, Klimkait T, Mihatsch MJ, Steiger J: **Prospective study of polyomavirus type BK replication and nephropathy in renal-transplant recipients.** *N Engl J Med* 2002, **347**:488-496.
37. Nickenleit V, Klimkait T, Binet IF, Dalquen P, Del Zenero V, Thiel G, Mihatsch MJ, Hirsch HH: **Testing for polyomavirus type BK DNA in plasma to identify renal-allograft recipients with viral nephropathy.** *N Engl J Med* 2000, **342**:1309-1315.
38. Alangaden GJ, Thyagarajan R, Gruber SA, Morawski K, Garnick J, El-Amm JM, West MS, Sillix DH, Chandrasekar PH, Haririan A: **Infectious complications after kidney transplantation: current epidemiology and associated risk factors.** *Clin Transplant* 2006, **20**:401-409.
39. Beimler J, Sommerer C, Zeier M: **The influence of immunosuppression on the development of BK virus nephropathy—does it matter?** *Nephrol Dial Transplant* 2007, **22**:66-71.
40. Giraldi C, Noto A, Tenuta R, Greco F, Perugini D, Dodaro S, Spadafora M, Lo Bianco AM, Savino O, Papalia T, Greco R, Bonofiglio R: **Prospective study of BKV nephropathy in 117 renal transplant recipients.** *New Microbiol* 2007, **30**:127-130.
41. Latif S, Zaman F, Veeramachaneni R, Jones L, Uribe-Urbe N, Turbat-Herrera EA, Herrera GA: **BK polyomavirus in renal transplants: role of electron microscopy and immunostaining in detecting early infection.** *Ultrastruct Pathol* 2007, **31**:199-207.
42. Mannon RB, Hoffmann SC, Kampen RL, Cheng OC, Kleiner DE, Ryschkevitich C, Curfman B, Major E, Hale DA, Kirk AD: **Molecular evaluation of BK polyomavirus nephropathy.** *Am J Transplant* 2005, **5**:2883-93.
43. Mischitelli M, Fioriti D, Anzivino E, Bellizzi A, Ferretti G, Gussman N, Mitterhofer AP, Tinti F, Barile M, Dal Maso M, Chiarini F, Pietropaolo V: **BKV QPCR detection and infection monitoring in renal transplant recipients.** *New Microbiol* 2007, **30**:271-274.
44. Tong CY, Hilton R, MacMahon EM, Brown L, Pantelidis P, Chrystie IL, Kidd IM, Tunekar MF, Pattison JM: **Monitoring the progress of BK virus associated nephropathy in renal transplant recipients.** *Nephrol Dial Transplant* 2004, **19**:2598-2605.
45. Vats A, Randhawa PS, Shapiro R: **Diagnosis and treatment of BK virus-associated transplant nephropathy.** *Adv Exp Med Biol* 2006, **577**:213-227.

46. Binet I, Nickeleit V, Hirsch HH, Prince O, Dalquen P, Gudat F, Mihatsch MJ, Thiel G: **Polyomavirus disease under new immunosuppressive drugs: a cause of renal graft dysfunction and graft loss.** *Transplantation* 1999, **67**:918-922.
47. Van Gorder MA, Della Pelle P, Henson JW, Sachs DH, Cosimi AB, Colvin RB: **Cynomolgus polyoma virus infection: a new member of the polyoma virus family causes interstitial nephritis, ureteritis, and enteritis in immunosuppressed cynomolgus monkeys.** *Am J Pathol* 1999, **154**:1273-1284.
48. Kapila K, Nampoory MR, Johnny KV, Pacsa AS, Al-Ayadhy B, Mathew JR, Nair MP, Halim MA, George SS, Francis IM: **Role of urinary cytology in detecting human polyoma bk virus in kidney transplant recipients. A preliminary report.** *Med Princ Pract* 2007, **16**:237-239.
49. Kipp BR, Sebo TJ, Griffin MT, Ihrke JM, Halling KC: **Analysis of Polyomavirus- Infected Renal Transplant Recipient's Urine Specimens.** *Am J Clin Pathol* 2005, **124**:854-861.
50. Drachenberg CB, Papadimitriou JC: **Polyomavirus-associated nephropathy: update in diagnosis.** *Transpl Infect Dis* 2006, **8**:68-75.
51. Boldorini R, Veggiani C, Barco D, Monga G: **Kidney and urinary tract polyomavirus infection and distribution: molecular biology investigation of 10 consecutive autopsies.** *Arch Pathol Lab Med* 2005, **129**:69-73.
52. Mannon RB: **Polyomavirus nephropathy: what have we learned?** *Transplantation* 2004, **77**:1313-1318.
53. Drachenberg CB, Hirsch HH, Ramos E, Papadimitriou JC: **Polyomavirus disease in renal transplantation: review of pathological findings and diagnostic methods.** *Hum Pathol* 2005, **36**:1245-1255.
54. Vera-Sempere FJ, Rubio L, Felipe-Ponce V, García A, Mayordomo F, Sánchez-Plumed J, Beneyto I, Ramos D, Zamora I, Simón J: **PCR assays for the early detection of BKV infection in 125 Spanish kidney transplant patients.** *Clin Transplant* 2006, **20**:706-711.
55. Basse G, Mengelle C, Kamar N, Guitard J, Ribes D, Esposito L, Rostang L: **Prospective evaluation of BK virus DNAemia in renal transplant patients and their transplant outcome.** *Transplant Proc* 2007, **39**:84-87.
56. Randhawa P, Ho A, Shapiro R, Vats A, Swalsky P, Finkelstein S, Uhrmacher J, Weck K: **Correlates of quantitative measurement of BK polyomavirus (BKV) DNA with clinical course of BKV infection in renal transplant patients.** *J Clin Microbiol* 2004, **42**:1176-1180.
57. Leung AY, Chan M, Tang SC, Liang R, Kwong YL: **Real-time quantitative analysis of polyoma BK viremia and viruria in renal allograft recipients.** *J Virol Methods* 2002, **103**:51-56.
58. Limaye AP, Jerome KR, Kuhr CS, Ferrenberg J, Huang ML, Davis CL, Corey L, Marsh CL: **Quantitation of BK virus load in serum for the diagnosis of BK virus-associated nephropathy in renal transplant recipients.** *J Infect Dis* 2001, **183**:1669-1672.
59. Hymes LC, Warshaw BL: **Polyomavirus (BK) in pediatric renal transplants: evaluation of viremic patients with and without BK associated nephritis.** *Pediatr Transplant* 2006, **10**:920-922.

Publish with **BioMed Central** and every scientist can read your work free of charge

"BioMed Central will be the most significant development for disseminating the results of biomedical research in our lifetime."

Sir Paul Nurse, Cancer Research UK

Your research papers will be:

- available free of charge to the entire biomedical community
- peer reviewed and published immediately upon acceptance
- cited in PubMed and archived on PubMed Central
- yours — you keep the copyright

Submit your manuscript here:

[http://www.biomedcentral.com/info/publishing\\_adv.asp](http://www.biomedcentral.com/info/publishing_adv.asp)

