

## A. Additional figures

### A.1 Descriptive statistics of the GigaMIDI Dataset

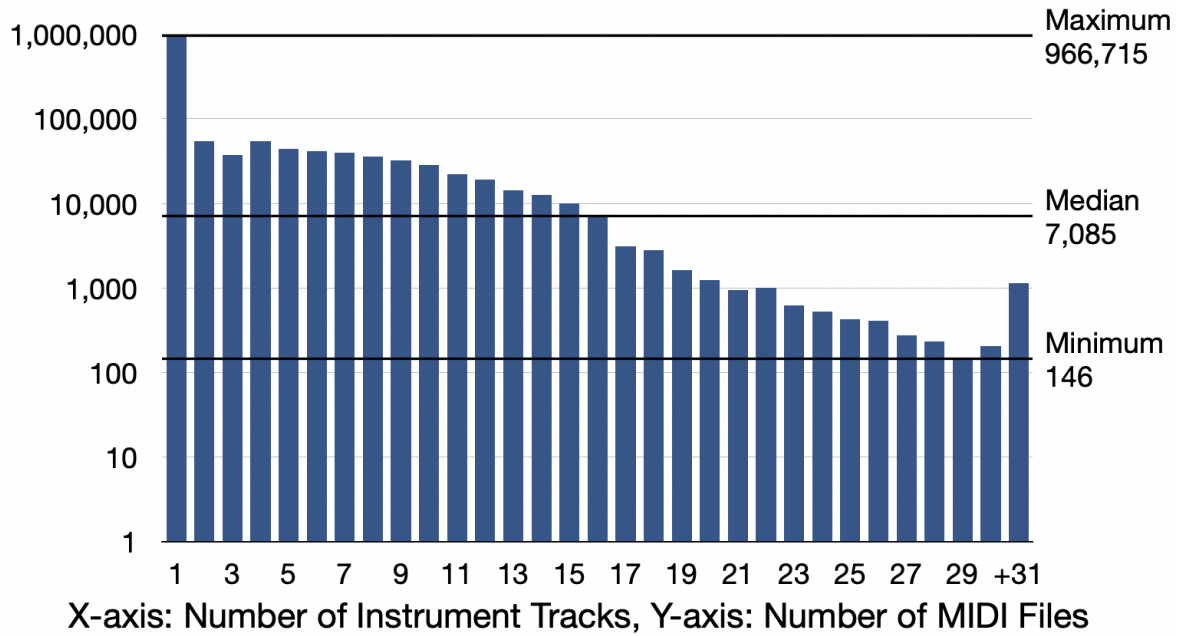


Figure 8: Distribution of the number of instrument tracks in GigaMIDI.

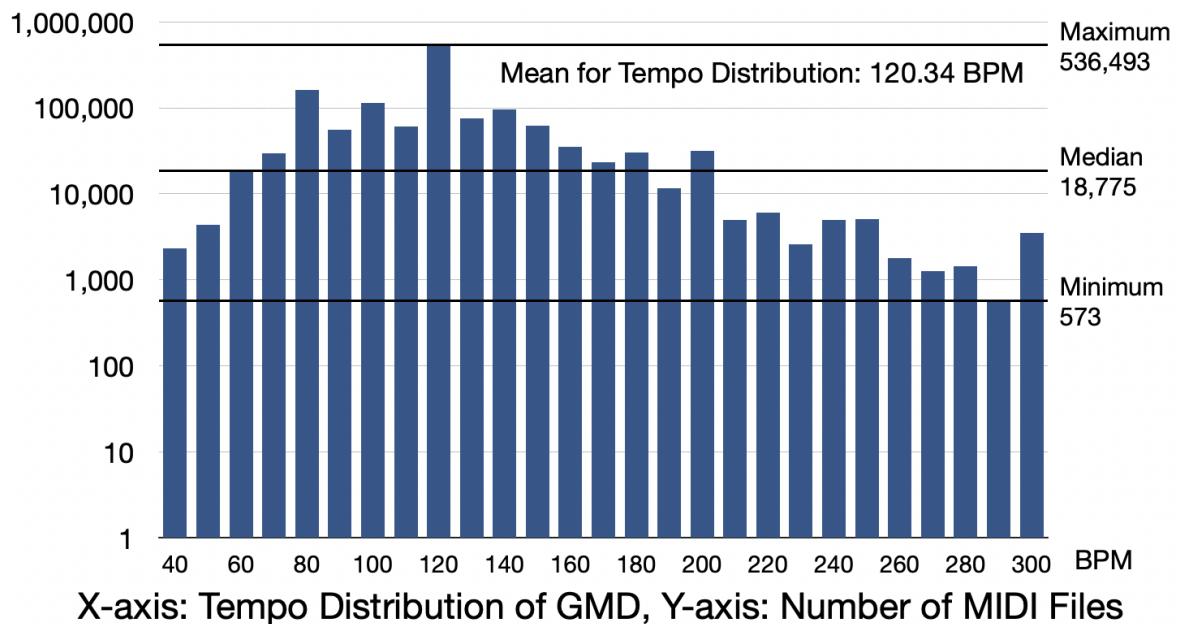
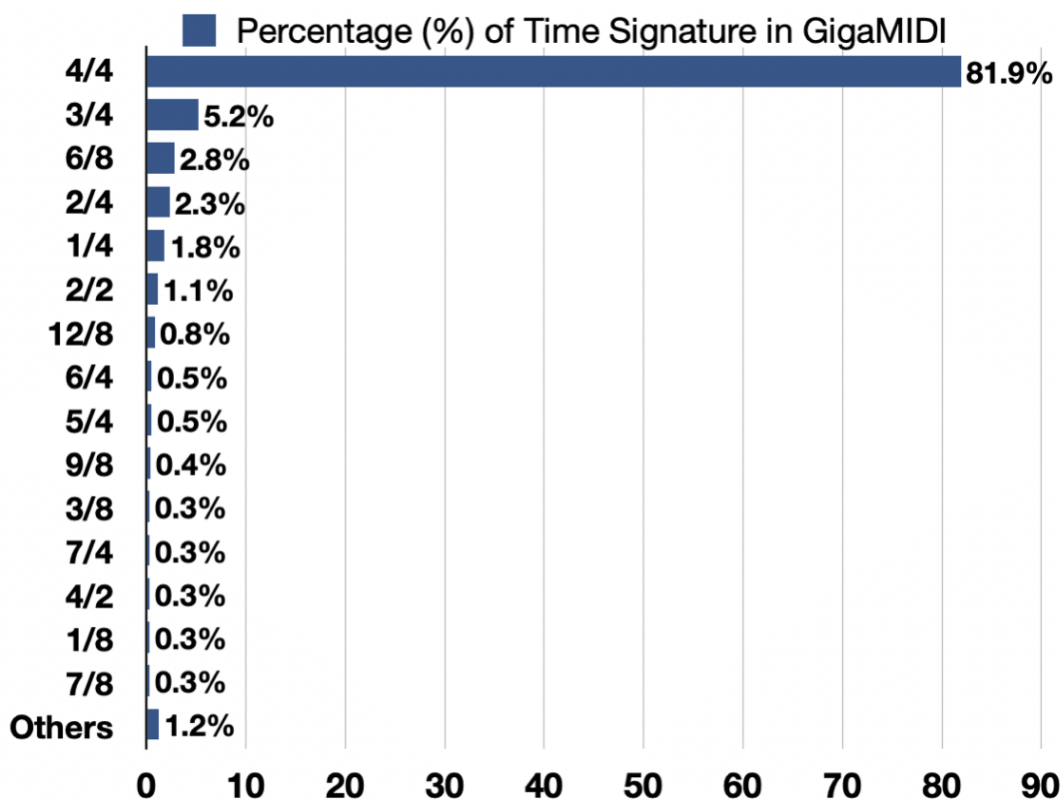


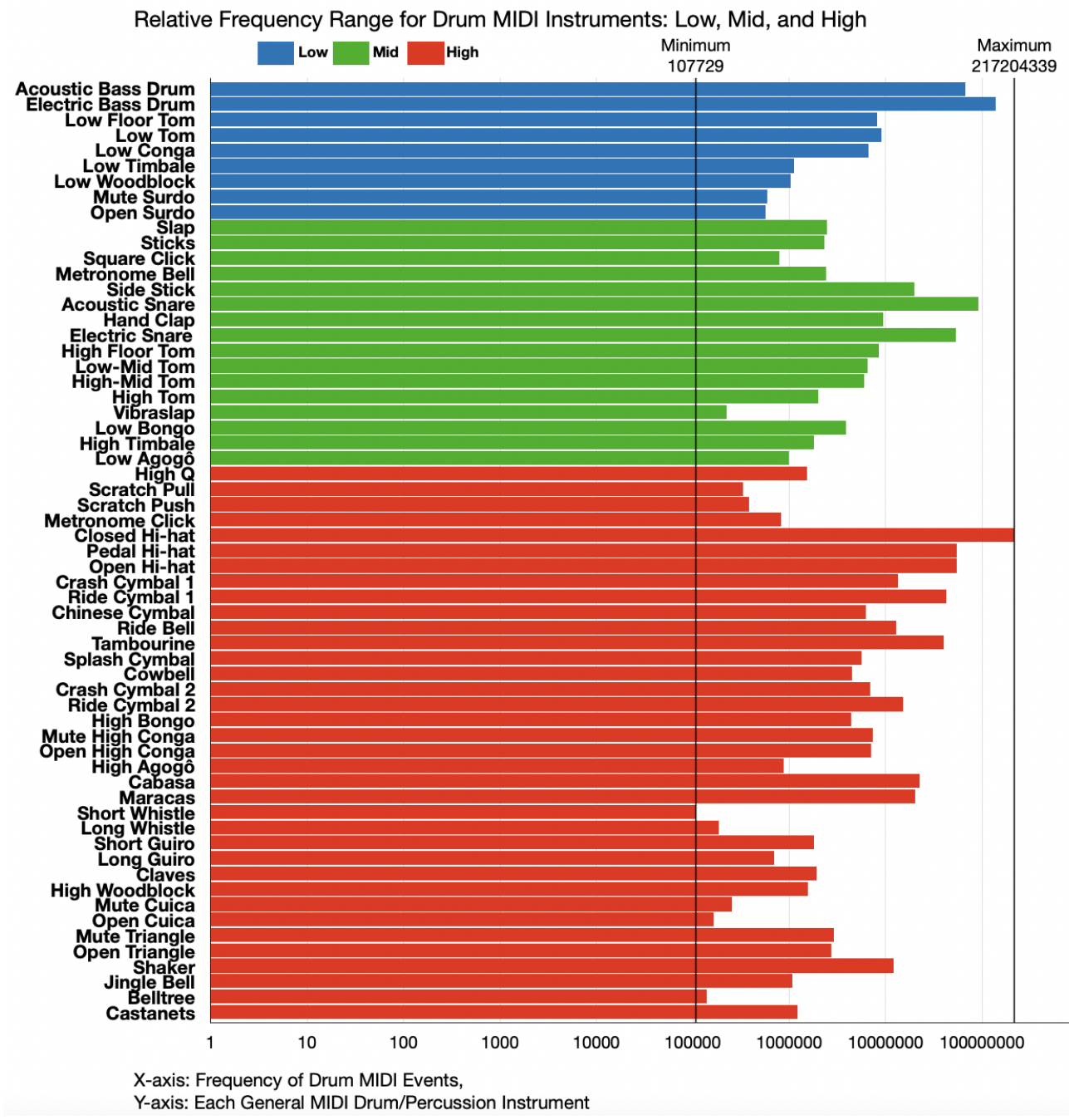
Figure 9: Distribution of tempo (BPM, beats per minute) in GigaMIDI.



\*Others: 5/8, 3/2, 4/8, 8/4, 8/8, etc.

X-axis: Percentage (%) of time signature in GigaMIDI, Y-axis: Time signatures

Figure 10: Distribution of time signature in GigaMIDI.



**Figure 11:** Distribution of each drum MIDI instrument event in GigaMIDI. The legend in the graph displays drum instruments based on three relative frequency levels depending on the colour hues (blue hue: low-range frequency, green hue: mid-range frequency, and red hue: high-range frequency).

A.2 Distribution for the number of distinct MIDI note velocity levels and onset time deviations.

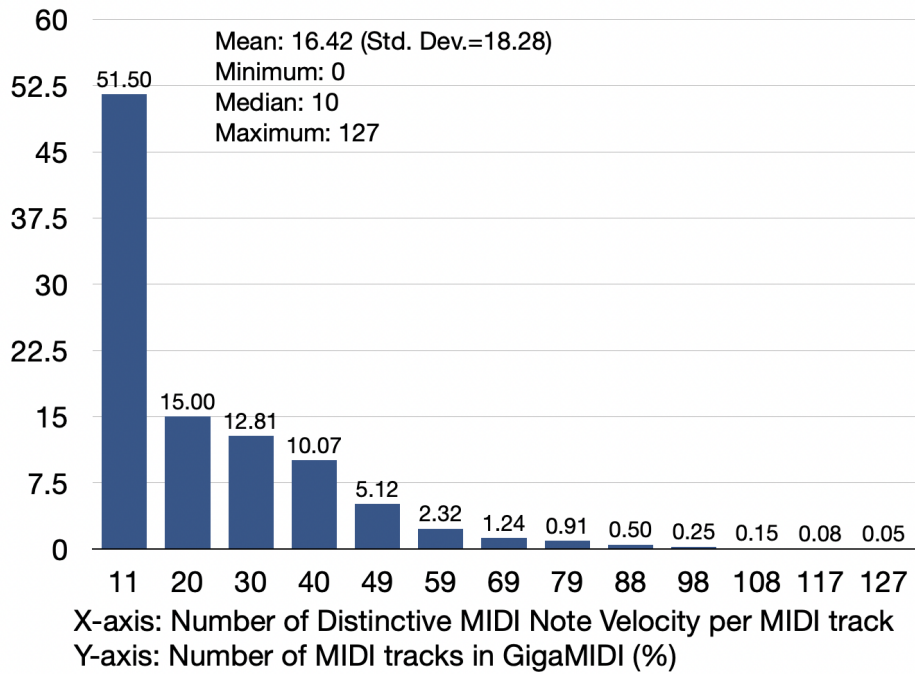


Figure 12: Distribution of distinct MIDI note velocity.

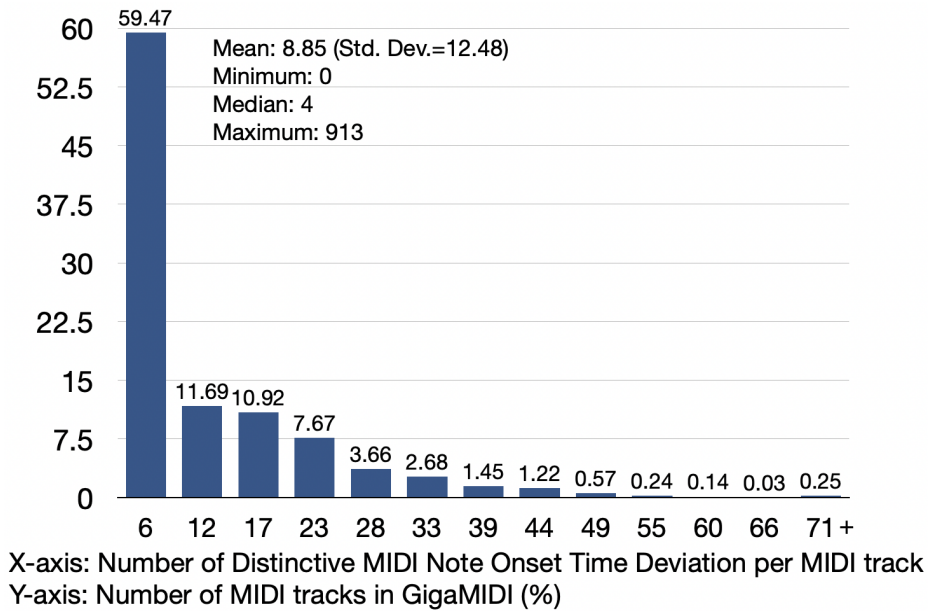


Figure 13: Distribution of distinct MIDI note onset time deviation.