

Supplement of The Cryosphere, 9, 399–409, 2015
<http://www.the-cryosphere.net/9/399/2015/>
doi:10.5194/tc-9-399-2015-supplement
© Author(s) 2015. CC Attribution 3.0 License.



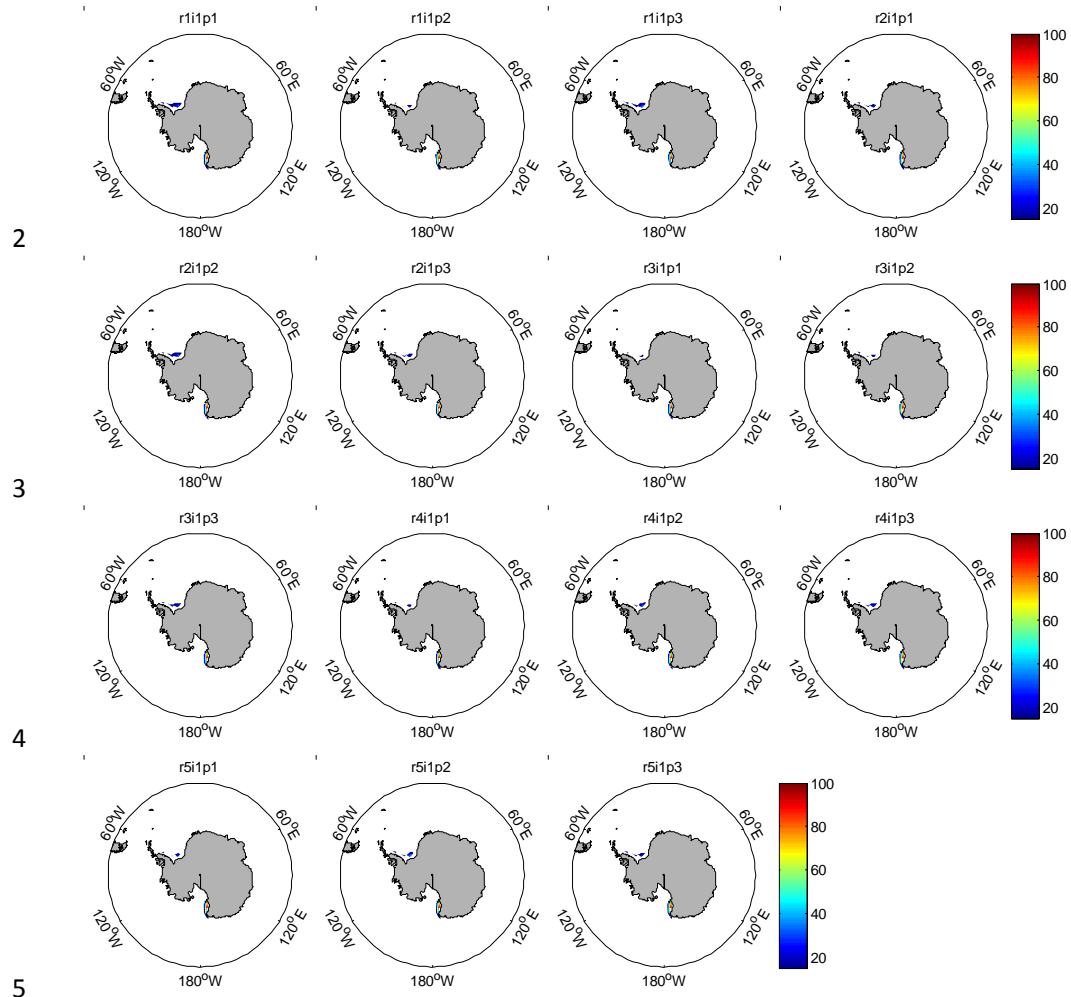
Supplement of

Assessment of sea ice simulations in the CMIP5 models

Q. Shu et al.

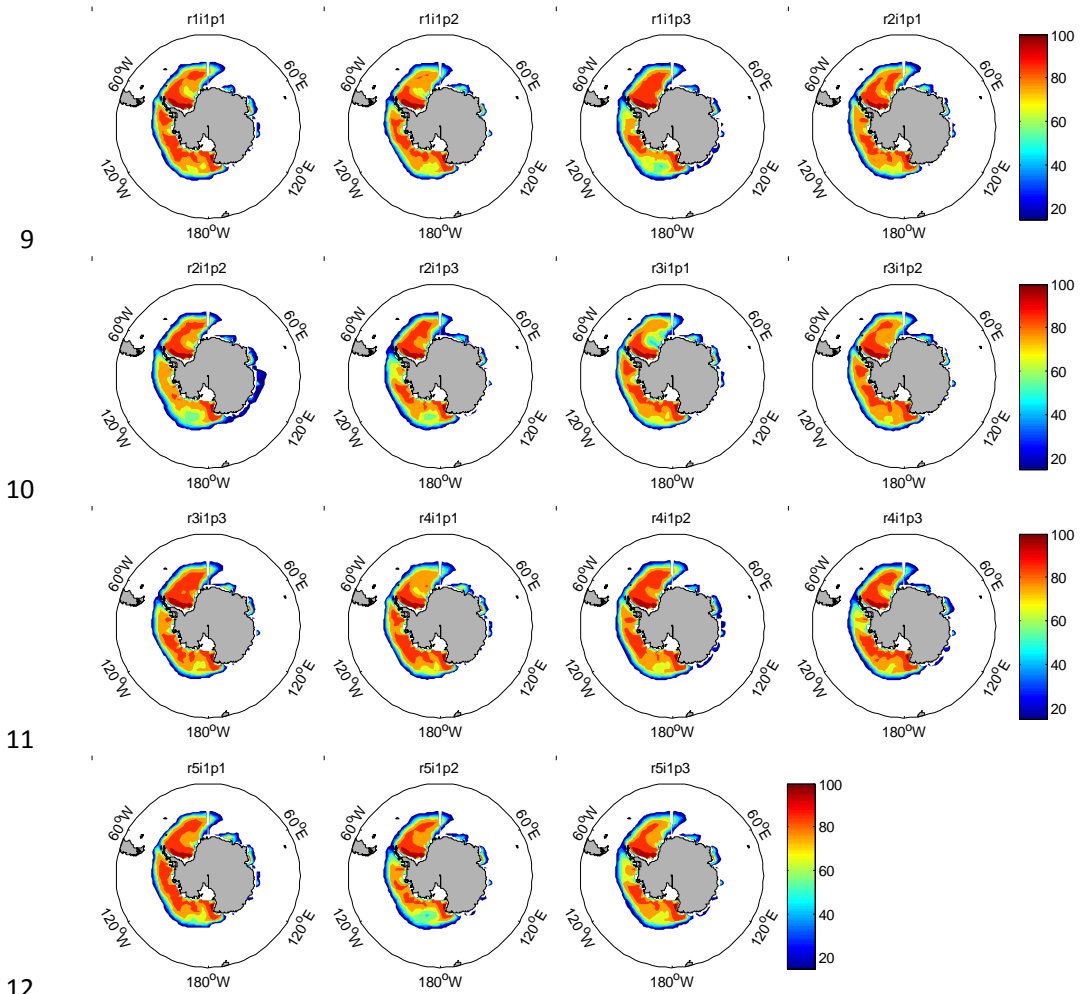
Correspondence to: F. Qiao (qiaofl@fio.org.cn)

1 **Supplementary material**



6 Figure S1. GISS-E2-R different ensemble realizations simulated Antarctic sea ice
7 concentration in February during 1979-2005 (units: %).

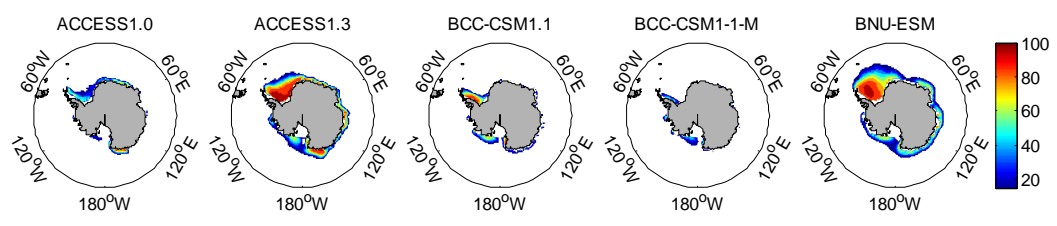
8



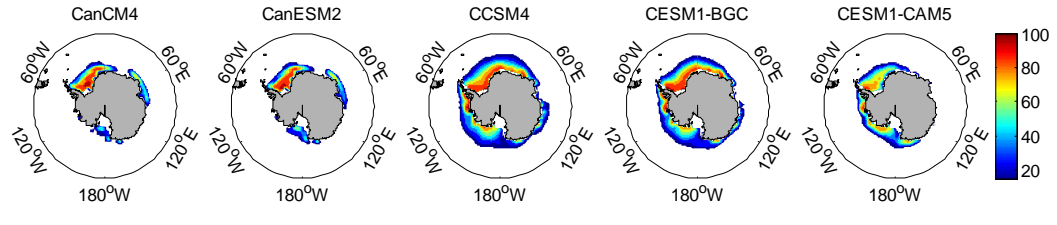
9
10
11
12
13 Figure S2. GISS-E2-R different ensemble realizations simulated Antarctic sea ice
14 concentration in September during 1979-2005 (units: %).

15

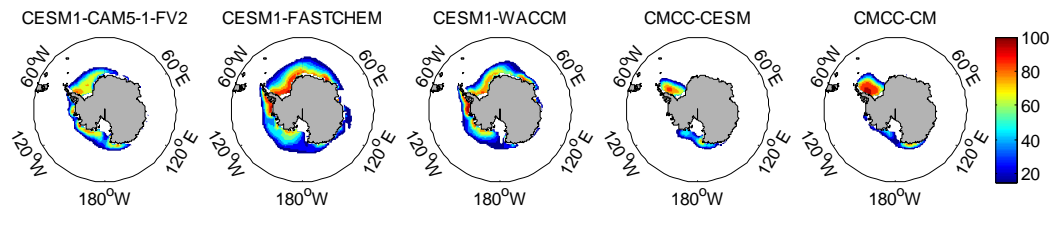
16



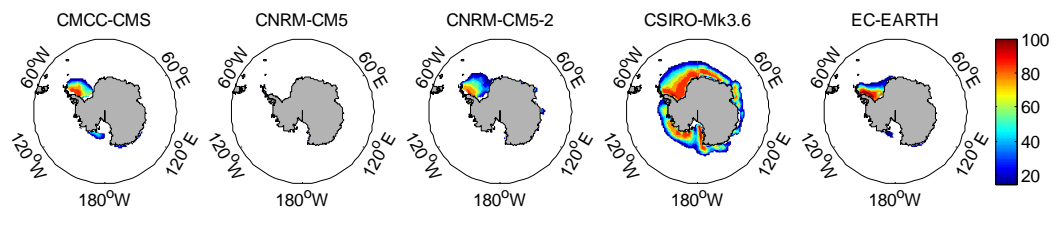
17



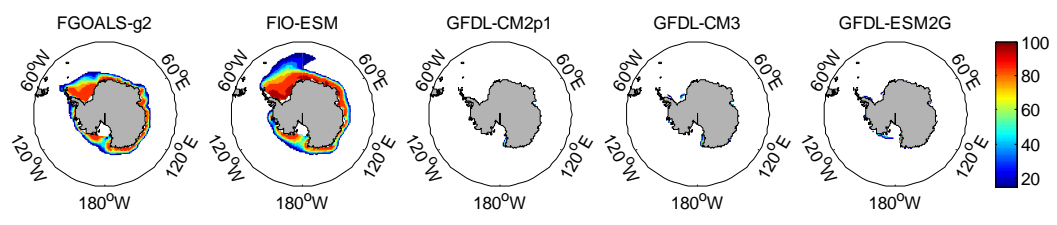
18



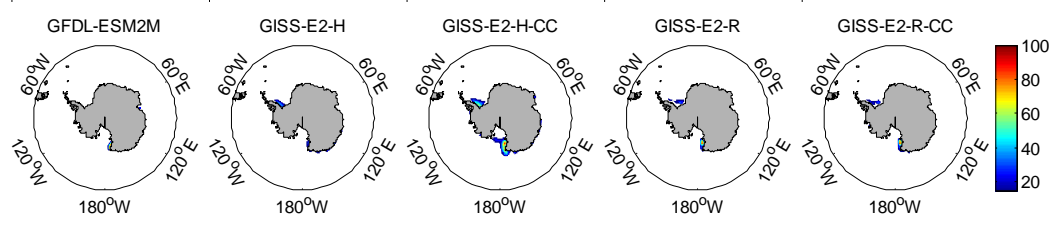
19



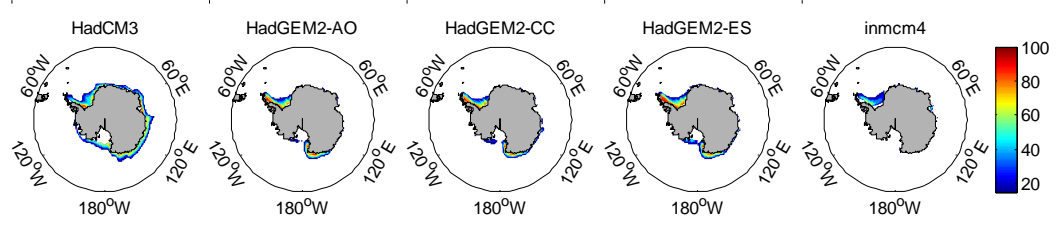
20

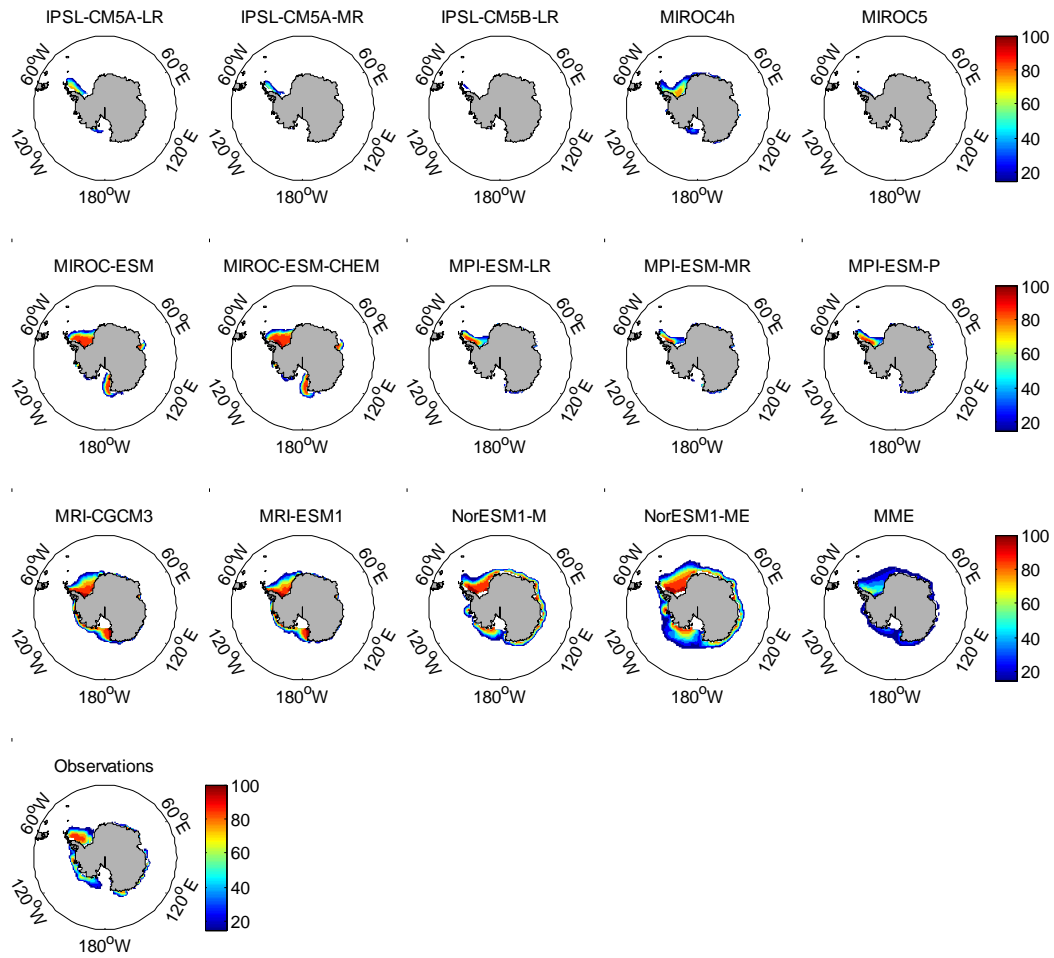


21



22





23

24

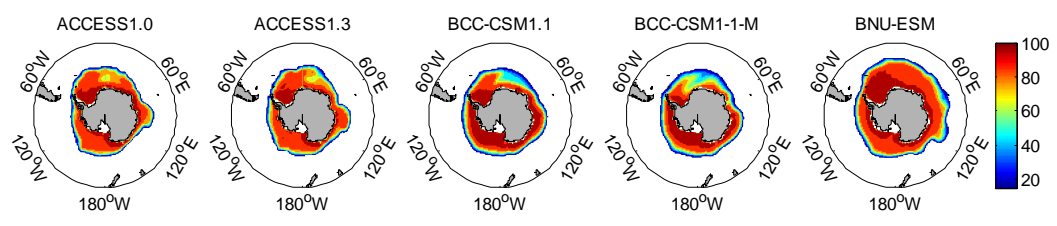
25

26

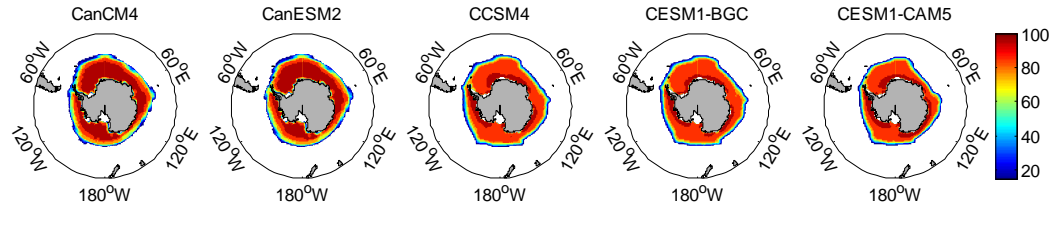
27 Figure S3. CMIP5-simulated and satellite-observed Antarctic sea ice concentration in
 28 February during 1979-2005 (units: %).

29

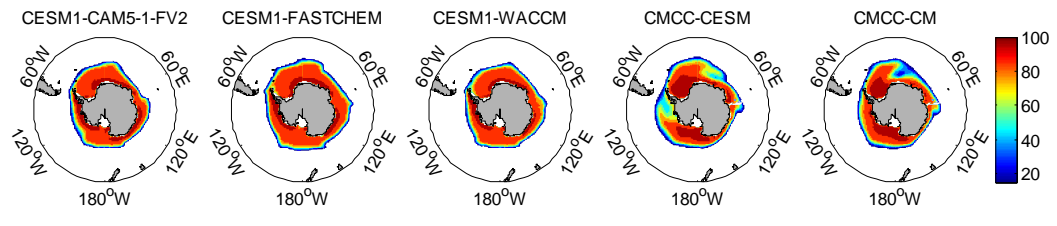
30



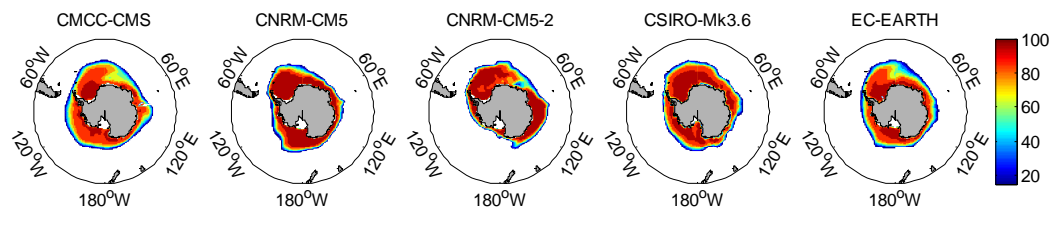
31



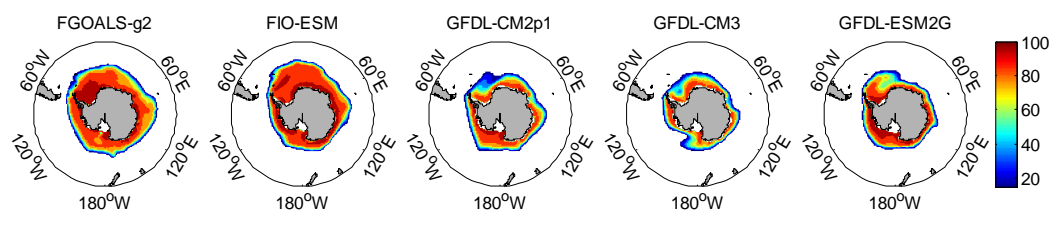
32



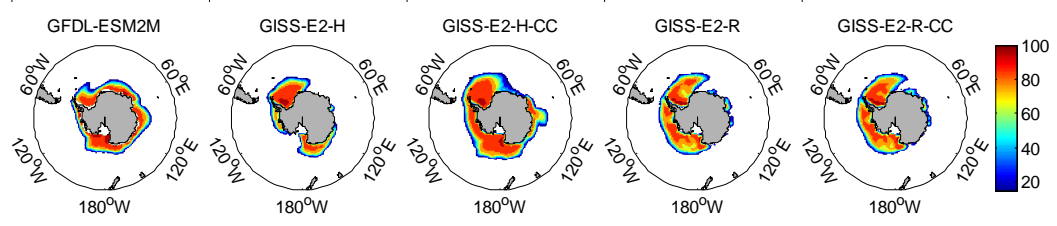
33



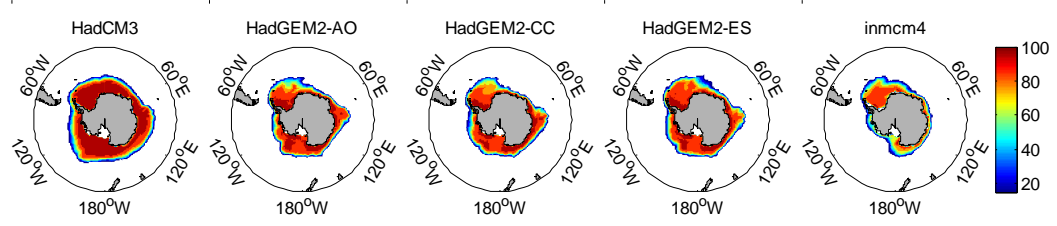
34

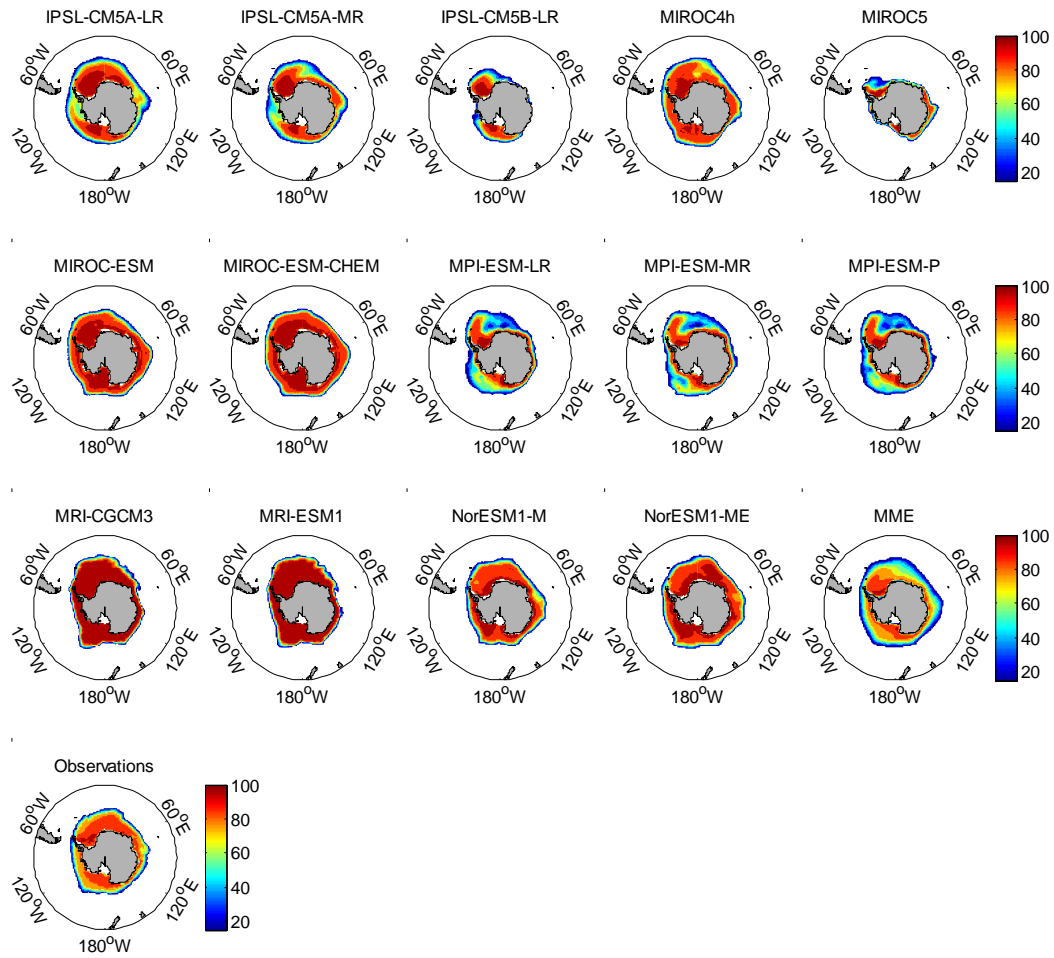


35



36

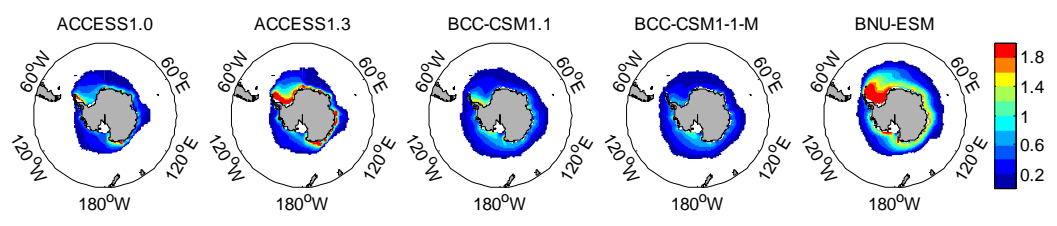




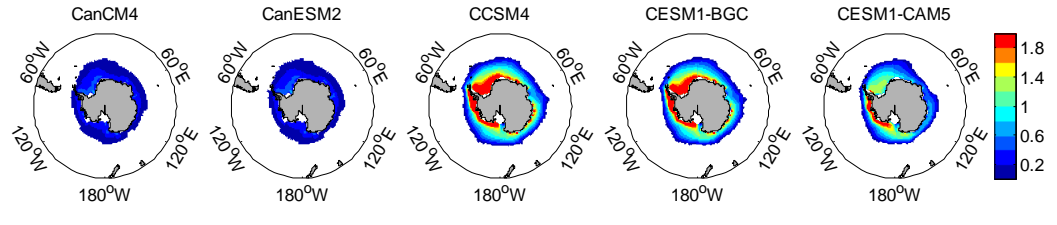
41 Figure S4. CMIP5-simulated and satellite-observed Antarctic sea ice concentration in
 42 September during 1979-2005 (units: %).

43

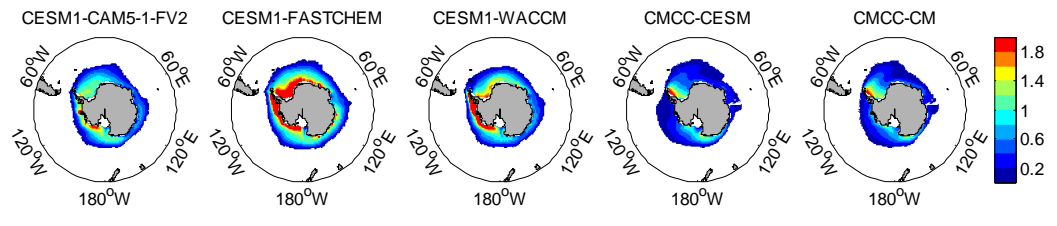
44



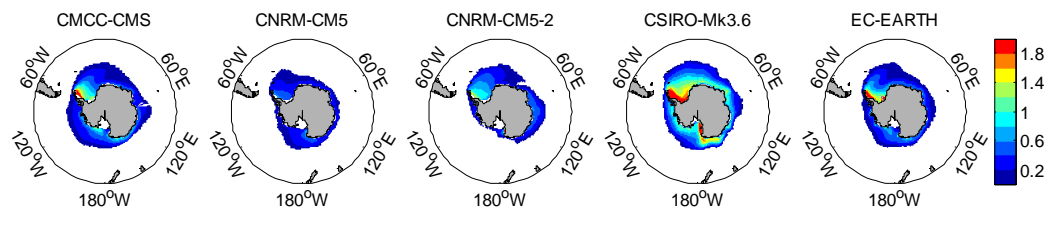
45



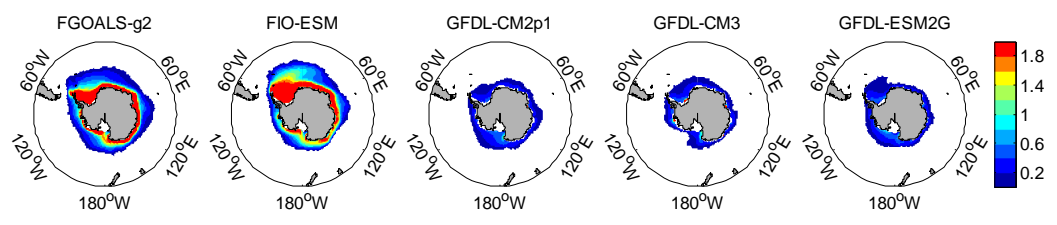
46



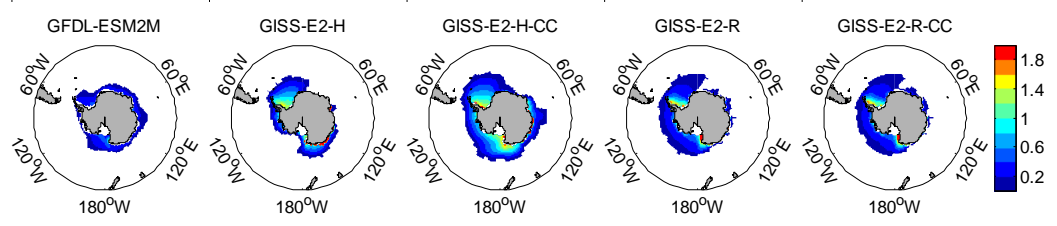
47



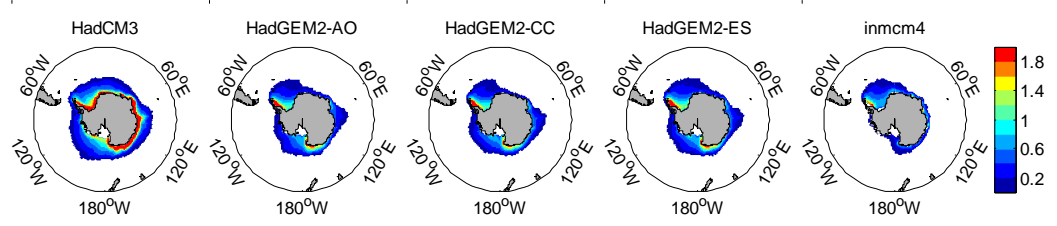
48

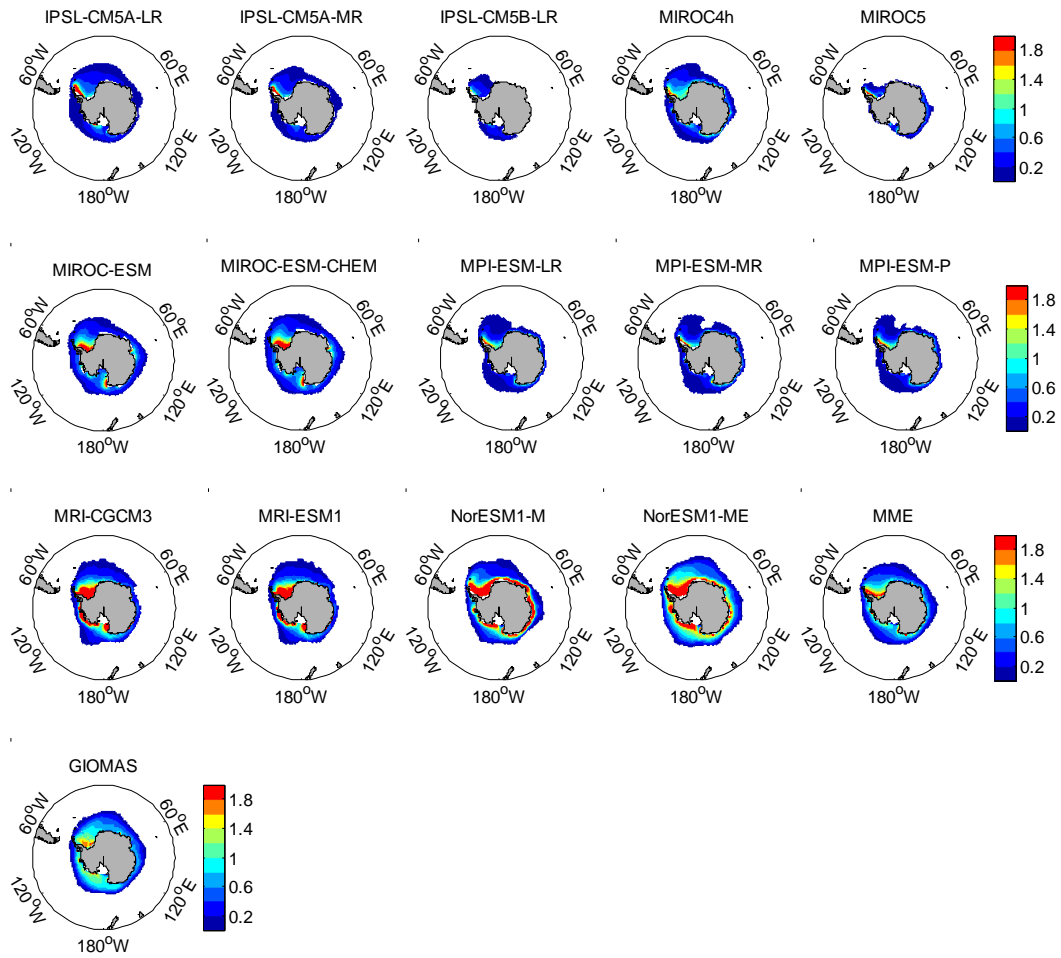


49



50





51

52

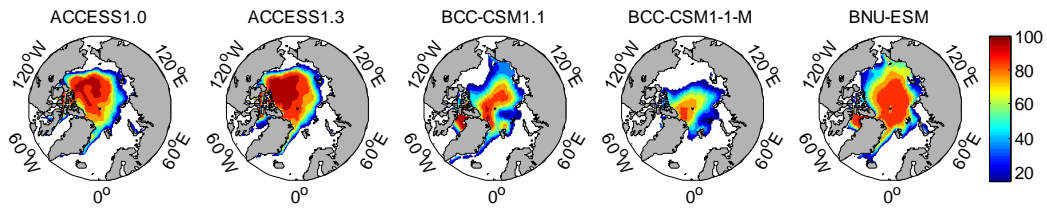
53

54

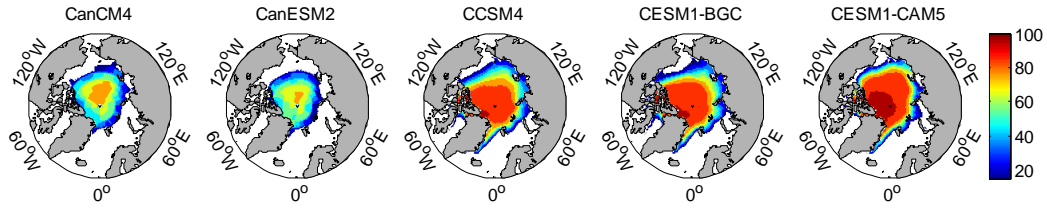
55 Figure S5. CMIP5-simulated and GIOMAS Antarctic sea ice thickness during

56 1979-2005 (units: m).

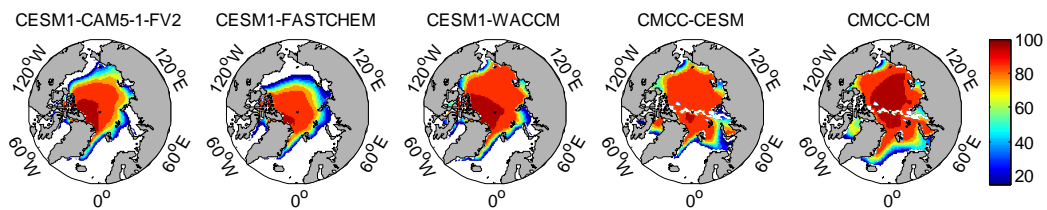
57



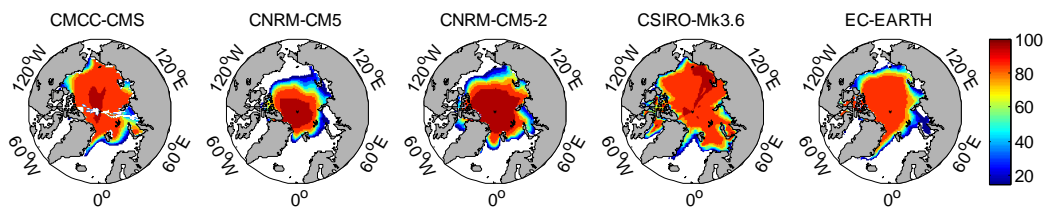
58



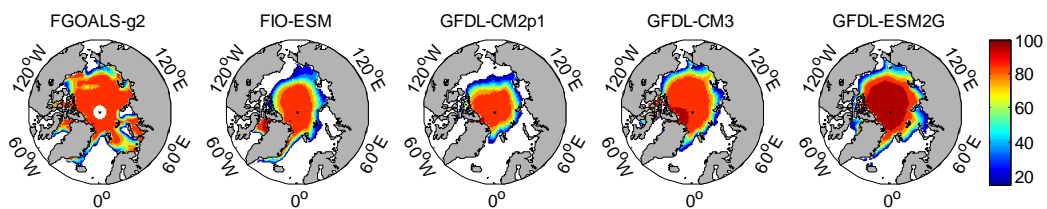
59



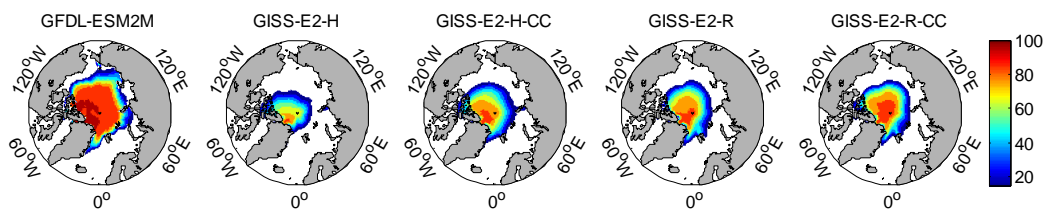
60



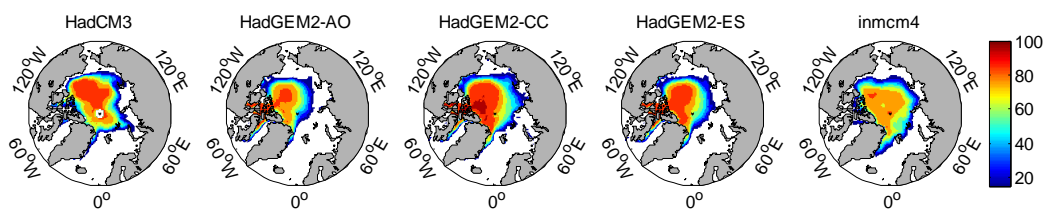
61



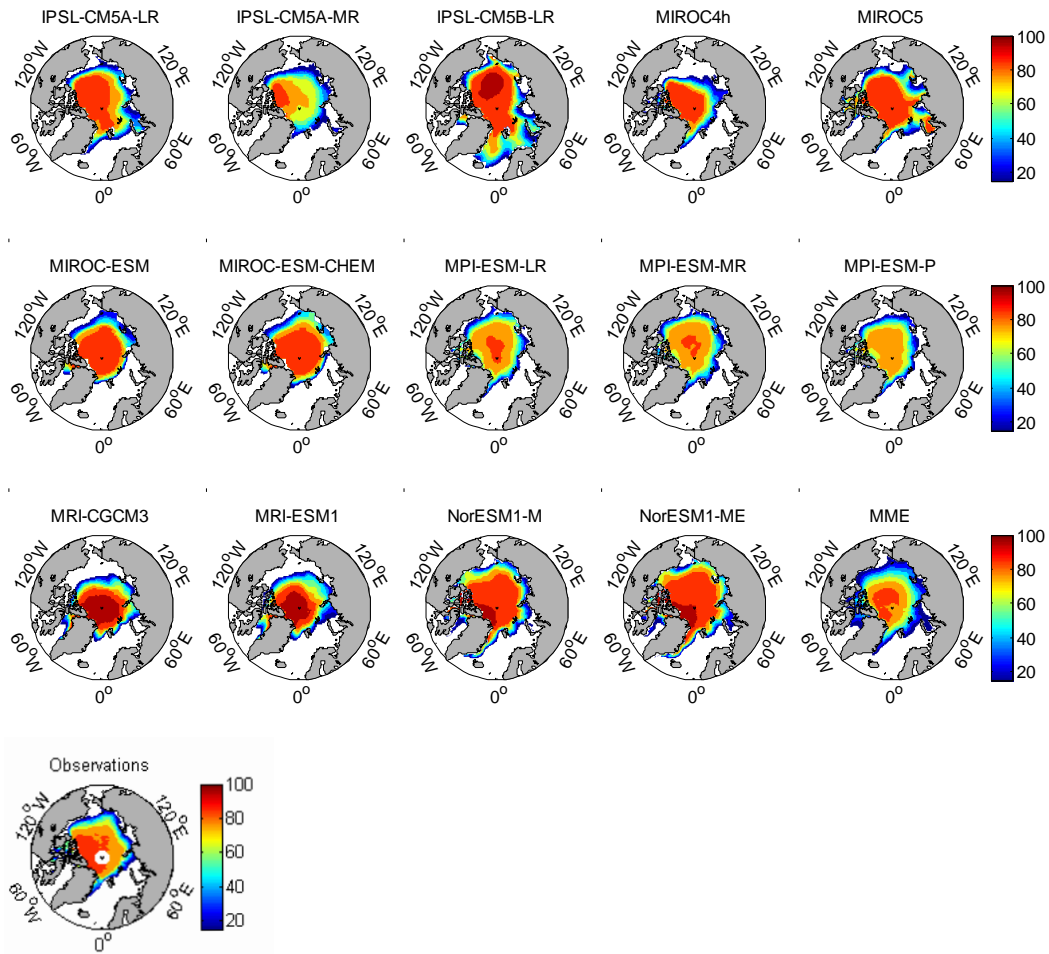
62



63



64



65

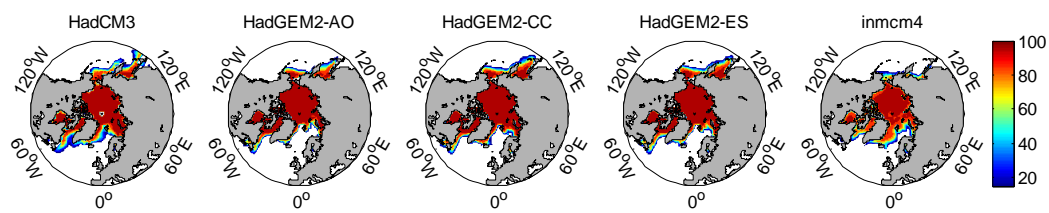
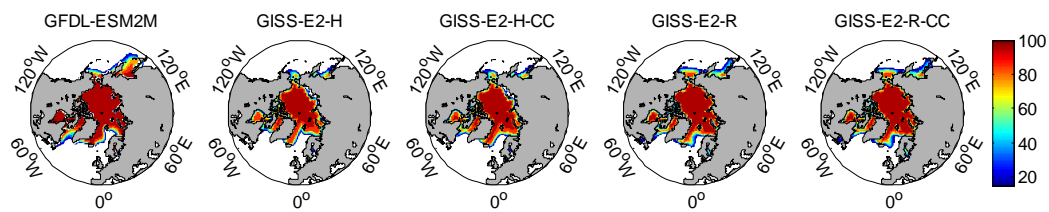
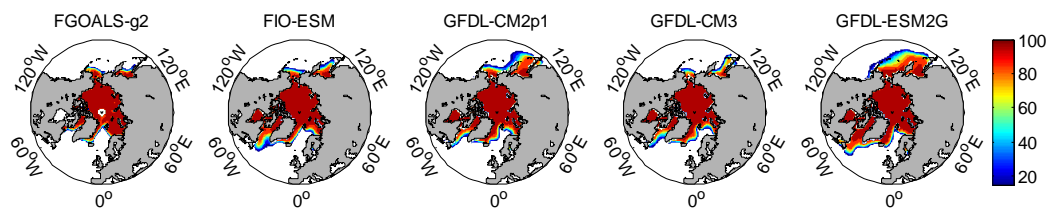
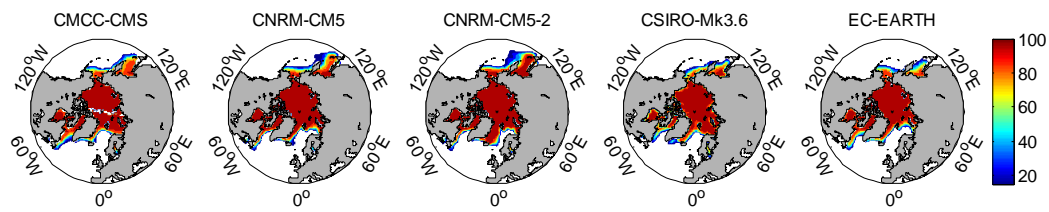
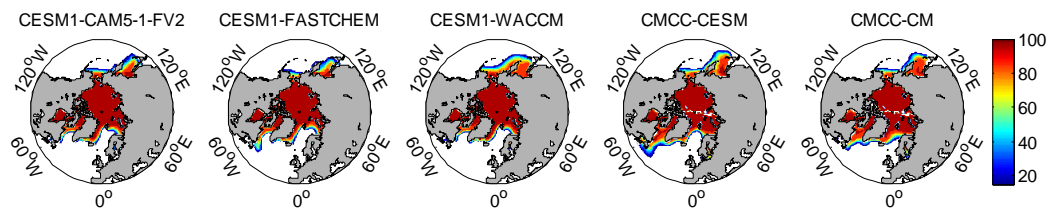
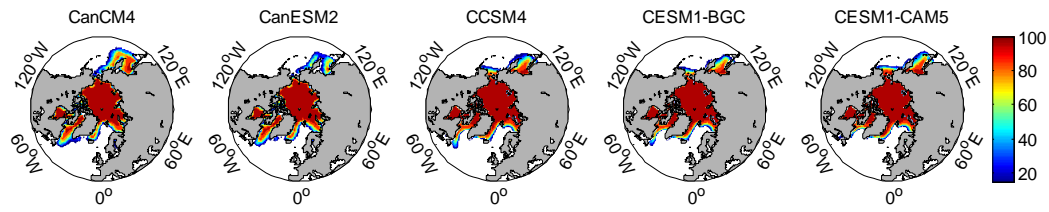
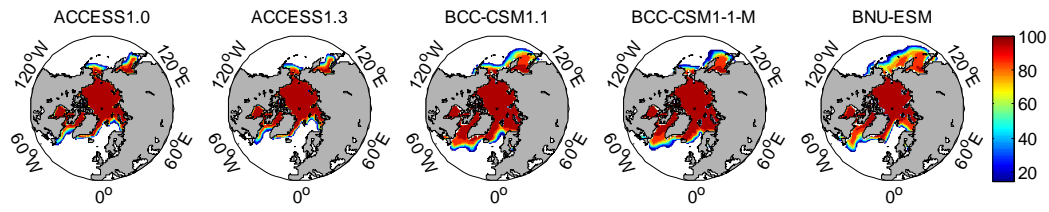
66

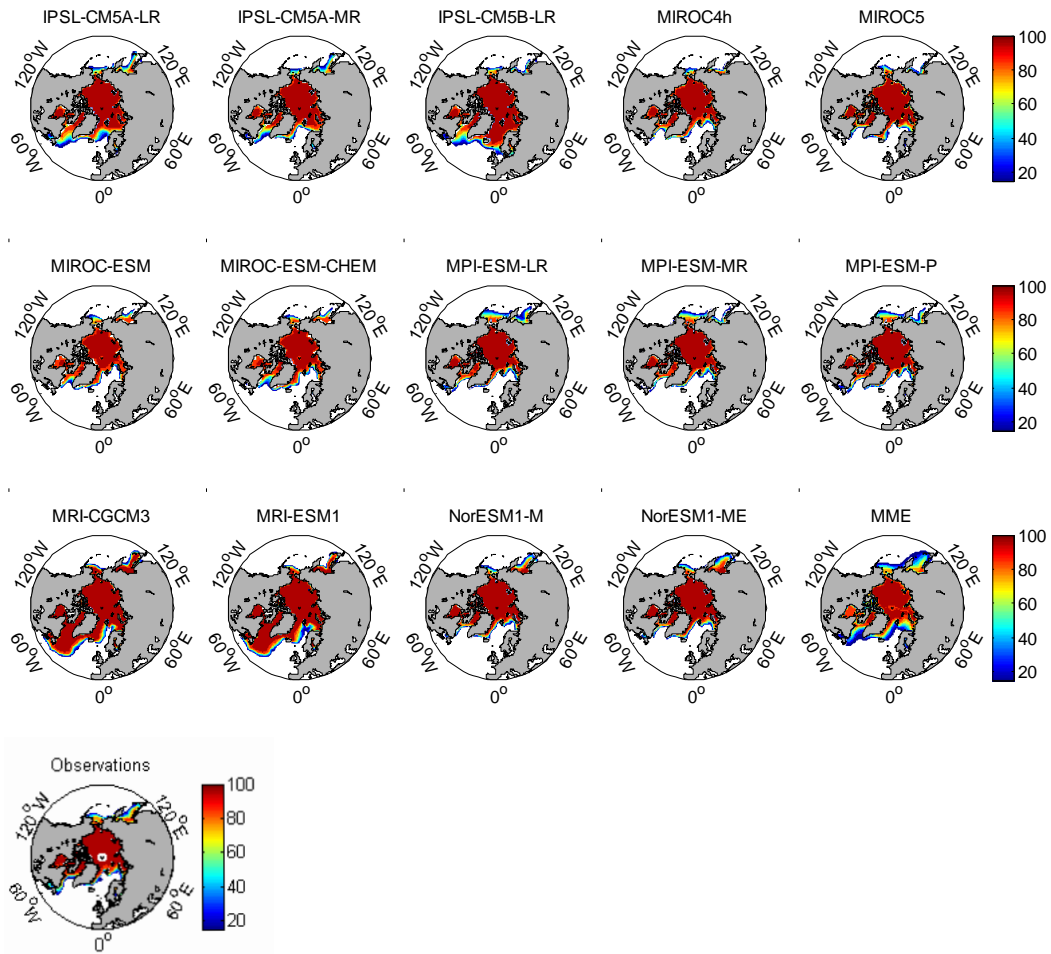
67

68

69 Figure S6. CMIP5-simulated and satellite-observed Arctic sea ice concentration in
 70 September during 1979-2005 (units: %).

71





79

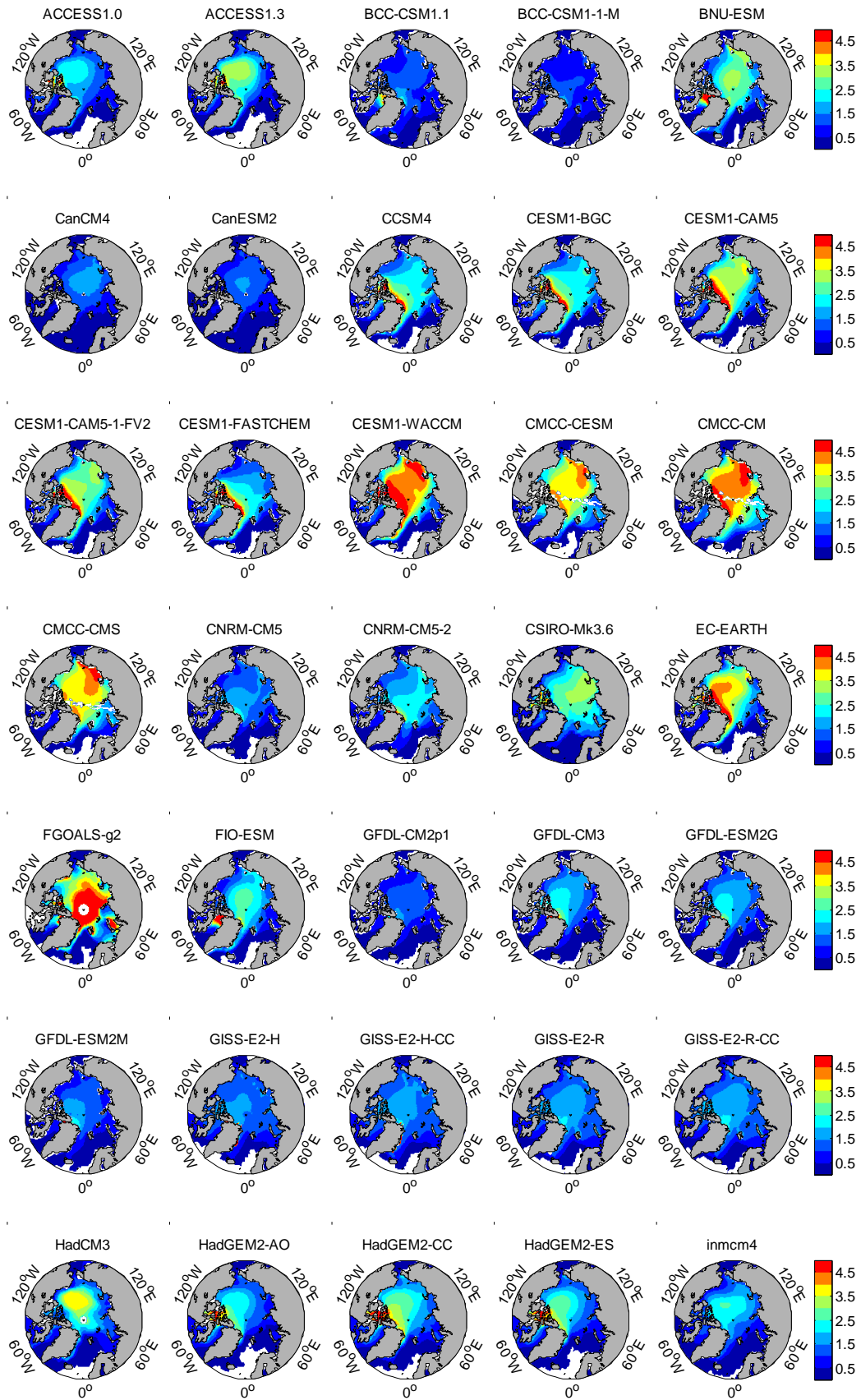
80

81

82

83 Figure S7. CMIP5-simulated and satellite-observed Arctic sea ice concentration in
 84 March during 1979-2005 (units: %).

85



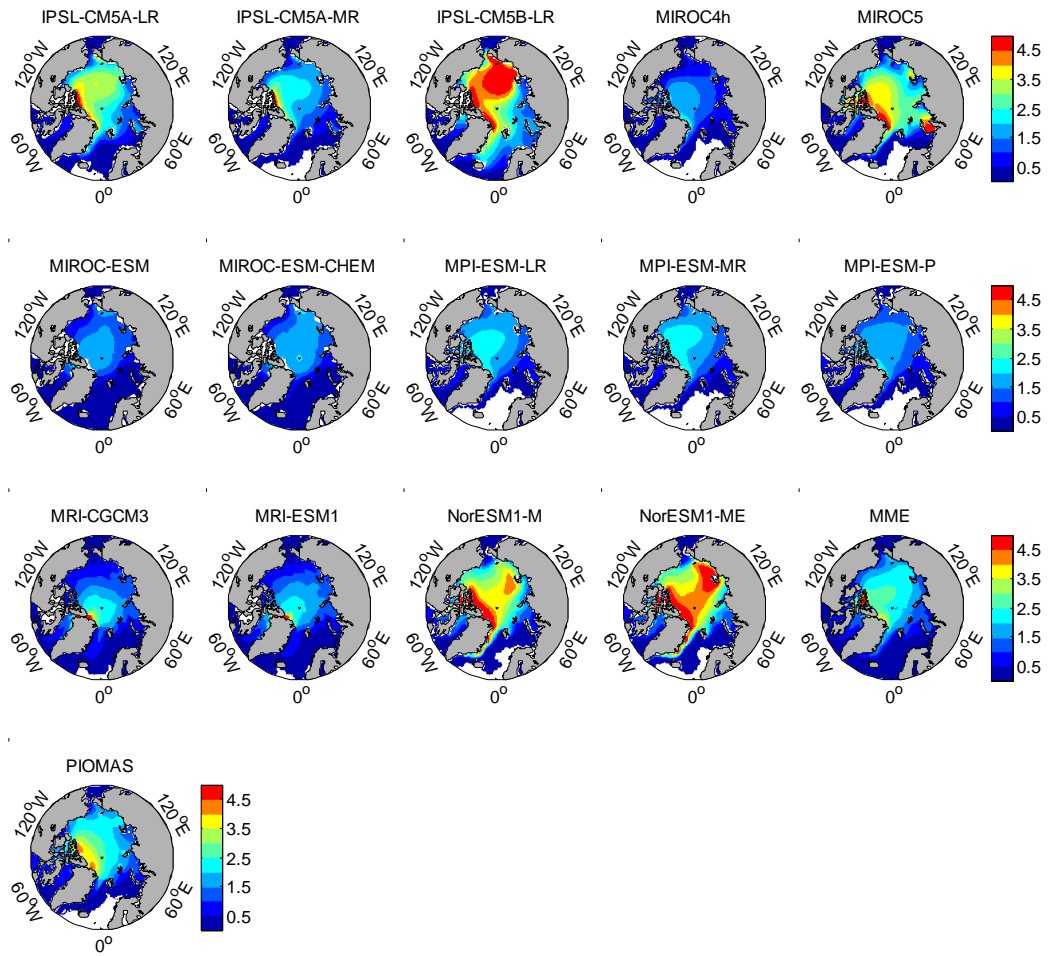


Figure S8. CMIP5-simulated and PIOMAS Arctic sea ice thickness during 1979-2005 (units: m).