

# Choose the right Chromebook for your school.



Choose your device in 4 simple steps:

1

Identify how the device will be used.

2

Map out the device specifications required.

3

Make recommendations for devices that meet these needs.

4

Compare your options to find the right one for your school.

Last updated: March 2024

Next update: June 2024

**NOTE:** Placement of devices within use case categories will be evaluated and updated bi-annually. Some configurations may only be available in select markets. Please contact your Channel or OEM representative regarding the availability of specific devices and configurations.

# Device categories

## Learning Anywhere

Classroom and distance learning devices

Great for learning inside and outside the classroom, these devices support multiple browser tabs and Google Workspace concurrently, plus video conferencing with 49+ participants. With the Google for Education App Hub you'll find the latest and most useful education app integrations to enrich learning.

### Recommended software / apps

**Productivity:** [Google Workspace for Education](#) tools like Docs, Slides, and Sheets

**VC/Comms:** [Google Meet / Classroom](#), [Zoom](#)

**Accessibility:** [Built-in features](#) like ChromeVox, reading mode, closed captions and more

**Creativity:** Adobe Express, Figma, and more on [Google for Education App Hub](#)

### Minimum system requirements

**RAM:** 4GB

**CPU:**

- **Intel:** 4500 / 5000 / 5100 / 6000/ N100 / N200 / U300
- **AMD:** 3015Ce / Athlon Silver / Athlon Gold
- **MediaTek Kompanio:** 500, 820, 828, 520, 528, 1200
- **Qualcomm:** 7c+ Gen 1,2,3

## Advanced Use

Teachers, staff, higher education, high school devices

Recommended for heavy workloads including content creation/editing, coding, and running apps in virtualized environments. Supports heavy multitasking (e.g., large video calls with 49+ participants, multiple browser tabs, Google Workspace, and external monitors/displays).

**Chromebook Plus devices fall under Advanced Use.**

### Recommended software / apps

**VC/Comms:** [Google Meet / Classroom](#), [Zoom](#), Cisco Webex, RingCentral, Slack, and [more](#)

**VDI:** Cameyo, Citrix, Itopia, Parallels, VMware

**Coding:** Linux

**Print:** Papercut, Canon, HP Print, PrinterLogic, Ricoh

**Productivity:** [Google Workspace for Education](#)

**Accessibility:** built-in [accessibility features](#)

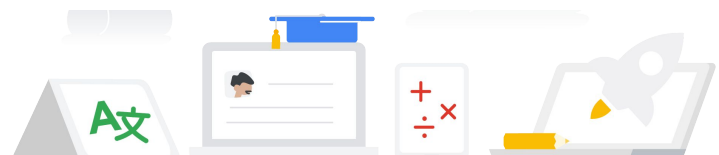
### Minimum system requirements

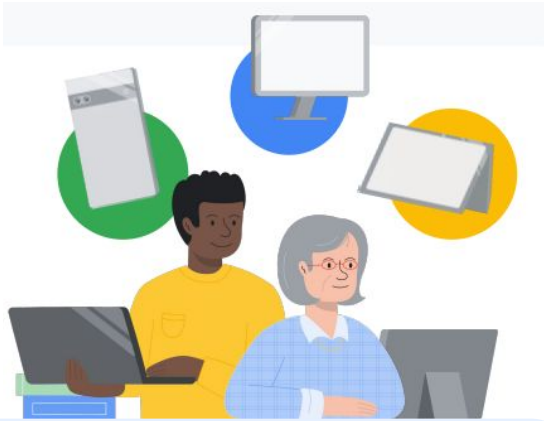
**RAM:** 8GB

**CPU:**

- **Intel:** i3 N305, i3, i5, i7
- **AMD:** Ryzen 3, 5, 7
- **MediaTek Kompanio:** 1380

Devices marked for Advanced Use will be able to handle all the listed workloads in the Learning Anywhere segment. However, Learning Anywhere devices may not be able to optimally support Advanced Use workloads.





**NEW!**

## Endpoint Education Upgrade

We're launching Endpoint Education Upgrade to **help schools manage Android and iOS devices** in their fleet. Endpoint Education Upgrade provides advanced account and device management controls to help keep school data more secure.

These advanced admin and security controls are in Google Workspace for Education Standard and Plus, and include advanced endpoint management. This lets admins control what can be installed on a device, who can log into it, and where it can access data.

Learn more about the [Endpoint Education Upgrade](#)

[Express your interest.](#)

## Chromebook Plus: Made for teachers and staff

### Designed for ease and security

#### Flexible devices and features

Whether it's taking notes on a touchscreen device, pre-recording lectures, or booting up in 6 seconds, teachers, IT admins, and school staff can all achieve their goals with Chromebooks.

#### Supported peripherals

The Works With Chromebook certification program guarantees peripherals are continually tested to meet compatibility standards across all makes of Chromebook devices. Categories include headsets, webcams, mics, external storage, and more.

#### Virtualization

ChromeOS partners with desktop and app virtualization solutions including [Itopia](#), [Parallels](#), and [Cameyo](#). These partnerships expand what you can do on Chromebooks.

#### Powerful and secure

Advanced Use Chromebooks support large video calls with 49+ participants, multiple browser tabs, external monitors, apps in virtual environments, and so much more. And with multilayered security, and no reported successful ransomware attacks on ChromeOS ever, Chromebooks are designed to keep user data private and secure.



### Features that were made for teachers



#### Cast moderator

Inspire students to share their ideas on the big screen, while staying in control of who's casting, by using a Chromecast with Google TV HD or 4G.



#### Screencast

Easily record, share, and view transcribed videos with the Screencast app in ChromeOS, and create a library students can watch from home.



#### Google Workspace for Education and Classroom

Assign interactive questions for YouTube videos, give students real-time feedback as they move through lessons, and easily monitor performance.

Use [Classroom add-ons](#) to integrate EdTech tools within Google Classroom. Assign a trivia game from Kahoot!, browse content from IXL's repository by subject or grade level, and more.

# Finding the right Chromebook

## User Profile & Features

The below table maps Learning Anywhere and Advanced Use wayfinding segments to user profiles. Also listed are the form factors and features that would provide an ideal experience for each user profile. These are recommendations, not requirements.

The following pages list devices by manufacturer. This information will help you find the right device with the specs required to suit the users' needs

To learn more, visit [Find your device](#).

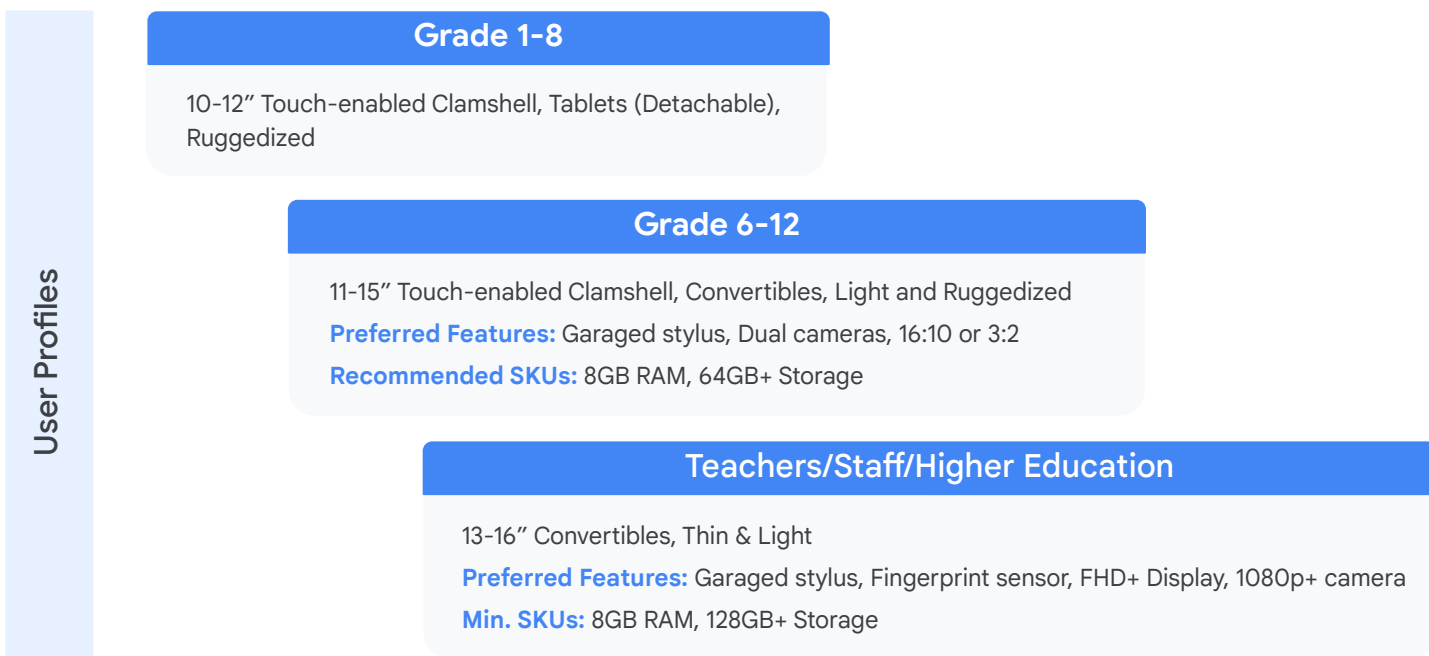


### Learning Anywhere

Intro to digital collaboration

### Advanced Use

Powerful computing for heavy workloads



#### Automatic Updates

Chromebooks released from 2021 onwards will automatically get 10 years of updates. Chromebooks released before 2021 and already in use, users and IT admins will have the option to extend automatic updates.

[Learn more](#)



#### Connected devices

Devices with WiFi 6/LTE/5G SKUs have been color coded on the following pages.



#### Zero-touch enrollment

For the most updated list of devices enabled for zero-touch enrollment, reference [here](#).



#### Supported peripherals

[Works With Chromebook](#) is peripherals certification program ensuring compatibility across all makes of Chromebook devices. Categories include headsets, webcams, mics, external storage and more.



#### Streamline w. ChromeOS

Simple management and advanced security IT leaders are used to — for the entire school, managed from one console.

From interactive lessons to troubleshooting, help teachers stay on the same page as students with everyone on ChromeOS

# Device highlights

## Learning Anywhere

Purpose-built education devices for introductory digital creation



Acer Chromebook Spin 512

- Garaged stylus
- Convertible
- LTE
- 12"



ASUS Chromebook CR11 Flip (CR1102F)

- Garaged stylus
- Convertible
- WIFI 6
- 11.6"



Dell Chromebook 3110 2-in-1

- Convertible
- LTE/eSIM
- 11.6" HD



HP Fortis 14" G10 Chromebook

- LTE/eSIM
- 14" up to FHD



Lenovo 500e Gen4

- Garaged stylus
- Convertible
- LTE
- 12.2"



Samsung Galaxy Chromebook 2 360

- Stylus compatible
- Convertible
- LTE
- 12.4"

## Advanced Use

Powerful, high performance devices recommended for teachers, staff, and advanced students



Acer Chromebook Spin 714

- Garaged stylus
- Convertible
- Fingerprint sensor
- 14" FHD



Asus Chromebook Plus CM34

- Stylus compatible
- Convertible
- WIFI 6E
- 14" FHD



Dell Latitude 5430 Chromebook

- Stylus compatible
- Convertible
- LTE
- 12.4"



HP Elite Dragonfly 13.5" Chromebook

- Magnetic stylus
- Convertible
- 5G/LTE
- 13.5" up to QHD



Lenovo Flex 5i Chromebook

- Stylus compatible
- Convertible
- Fingerprint sensor
- 14" FHD



Samsung Galaxy Chromebook 2

- Stylus compatible
- Convertible
- 13.3" QLED

Learning anywhere

CB 311 (C723/C723T/C723-TCO/T-TCO) [MT8186, 4/8GB] clamshell, 11" touchscreen (optional)			
CB 311 (C722/T) [Kompanio 500, 4GB] clamshell, 11" touchscreen (optional)			
CB 314 (C934/C934T) [4500/5100/PQCN6000, 4/8GB] clamshell, 14" touchscreen (optional)			
CB 314 (C922) [Kompanio 500, 4GB] clamshell, 14" screen			
CB 314 (C936/C936T C936-TCO/C936T-TCO) [N100, 4/8GB] clamshell, 14" touchscreen (optional)			
CB 511 (C741/L/LT) [SC7180/7c, 4/8GB] clamshell, 11" touchscreen (optional)			
CB 511 (C734, C734T) [N4500/5100, 4/8GB] clamshell, 11" touchscreen (optional)			
CB 511 (C736/T/L/LT/-TCO/T-TCO/L-TCO/LT-TCO) [N100/200, 4/8GB] clamshell, 11" touchscreen (optional)			
CB Spin 511 (R753T/TN) [N4500/5100, 4/8GB] convertible, 11" touchscreen			
CB Spin 511 (R756T/TN/T-TCO/TN-TCO) [N100/200, 4/8GB] convertible, 11" touchscreen			
CB Spin 512 (R853TA/TNA) [N4500/5100/PQCN6000, 4/8GB] convertible, 12" touchscreen			
CB Spin 512 (R856T/TN/T-TCO/TN-TCO) [N100/200, 4/8GB] convertible, 12" touchscreen			
CB Spin 513 (R841T/LT) [SC7180, 4/8GB] convertible, 13" touchscreen			
CB Spin 311 (R722T) [Kompanio 500, 4GB] convertible, 11" touchscreen			
CB Spin 314 [N4500,5100,6000, 4/8GB] convertible, 14" touchscreen			
CB Spin 314 [CP314-1H/HN, 4/8GB] convertible, 14" touchscreen			
CB Tab 510 [Qualcomm, 4GB] tablet, 10" touchscreen			
CB Vero 712 ( CV872/CV872T) [CM7305/PMD8505, 4/8GB] clamshell, 12" touchscreen (optional)			

Advanced use

CB Spin 514 (CP514-1W/-1WH) [R3/5/7, 8/16GB] convertible, 14" touchscreen*			
CB Spin 514 (CP514-3WH) [R3/R5/R7, 8/16GB] convertible, 14" touchscreen*			
CB Spin 714 (CP714-1WN, CP714-2WN) [i3/i5/i7, 8/16GB] convertible, 14" touchscreen*			
Chromebox CX14 [i3/i5/i7, 8/16GB] mini PC			
Chromebox CX15 [i3/i5/i7, 8/16GB] mini PC			
CB 514 (CB514-1W/-1WT) [i3/i5/i7, 8GB] clamshell, 14" touchscreen (optional)			
Spin 514 (CP514-2H) [i3/i5/i7, 8GB/16GB] convertible, 14" touchscreen*			
<b>Acer Chromebook Plus 514</b> (CBE574-1/CBE574-1T) [R3/R5, 8GB/16GB] clamshell, 14" touchscreen (optional)			
<b>Acer Chromebook Plus 515</b> (CBE595-1/-1T) [i3/ i5/ i7, 8GB/16GB clamshell, 15" touchscreen optional			
CB Vero 514 (CBV514-1H/HT) [i3/i5/i7, 8/16GB] clamshell, 14" touchscreen (optional)*			
CB Vero 712 (CV872/CV872T) [i3, 8GB] clamshell, 12" touchscreen (optional)			

KEY



Chromebook Plus device or Advanced Use device qualifying for OS update to include enhanced features found on Chromebook Plus devices.

\*Device eligible for Chromebook Plus image from M118.



Devices that have WiFi 6 enabled SKUs



Devices that have a cellular SKU



Stylus compatible  
G = Garaged stylus included

Learning anywhere

CR1 (CR1100C) [N4500,N5100,N6000, 4/8GB] Clamshell, 11.6"screen				
CR1 (CR1100F) [N4500,N5100,N6000, 4/8GB] Convertible, 11.6" touchscreen				
CR11 (CR1102C) [N100/N200, 4/8GB] Clamshell, 11.6" screen				
CR11 (CR1102F) [N100/N200, 4/8GB] Convertible, 11.6" touchscreen				
CR11 (CR1104C) [N100/N200, 4/8/16GB] Clamshell, 11.6" screen				
CR11 (CR1104F) [N100/N200, 4/8/16GB] Convertible, 11.6" touchscreen				
CR12 (CR1204C) [N100/N200, 4/8/16GB] Clamshell, 12" screen				
CR12 (CR1204F) [N100/N200, 4/8/16GB] Convertible, 12" touchscreen				
CX1 (CX1101C) [N4020/N4120, 4GB/8GB] Clamshell, 11.6"				
CX1 (CX1102F) [N4500,N5100, N6000, 4/8GB] Convertible, 11.6" touchscreen				
CX1 (CX1400C, CX1500C, CX1700C) [N4500, N5100, N6000, 4/8GB] Clamshell, 14"/15.6"/17.3" screens				
CX1 (CX1400F, CX1500F) [N4500, N5100, N6000, 4/8/16GB] Convertible, 14"/15.6" touchscreen				
CZ11 (CZ1104C) [Kompanio 520, 4/8GB ] Clamshell, 11.6" screen				
CZ11(CZ1104F) [Kompanio 520, 4/8GB ] Convertible, 11.6" touchscreen				
CZ12 (CZ1204C) [Kompanio 520, 4/8GB ] Clamshell, 12" screen				
CZ12 (CZ1204F) [Kompanio 520, 4/8GB ] Convertible, 12" touchscreen				
CM5 (CM5500) [R3/5, 4GB] Convertible, 15.6" touchscreen				
CM14 (CM1402C) [Kompanio 520, 4/8GB] Clamshell, 14" screen				
CM14 (CM1402F) [Kompanio 520, 4/8GB] Convertible, 14" touchscreen				
CM3001D [Kompanio 520 4/8GB] Tablet, 10.5" touchscreen				

Advanced use

CM34 Flip <b>Chromebook Plus</b> (CM3401) [R3, 8GB] Convertible, 14" touchscreen					
CX34 <b>Chromebook Plus</b> (CX3402) [i3/i5/i7, 8/16GB] Clamshell, 14" touchscreen					
CX3 (CX3400) [i3/i5/i7, 8/16GB] Convertible, 14" touchscreen					
CX34 (CX3401F) [i3/i5/i7, 8/16GB] Convertible, 14" touchscreen					
CX5 (CX5601, CX5500, CX5400) [i5/i7, 8/16GB] Convertible, 16"/15.6"/14" touchscreen					
Chromebox 5a [i3/i5/i7, 16/32 GB] Mini PC					
CX9 (CX9400) [i3/i5/i7, 8/16GB] Clamshell, 14" screen					
CM5 (CM5500) [R5, 8GB] Convertible, 15.6" touchscreen					
Chromebox 4 [i3/i5/i7, 8/16GB] Mini PC					
Chromebox 5 [i7, 16/32GB] Mini PC					
Expertbook CX54 Chromebook Plus [Core Ultra5/7, 8/16GB] Clamshell, 14" touchscreen					



Chromebook Plus device or Advanced Use device qualifying for OS update to include enhanced features found on Chromebook Plus devices

\*Device eligible for Chromebook Plus image from M118.



Devices that have WiFi 6 enabled SKUs



Devices that have a cellular SKU



Stylus compatible  
G = Garaged stylus included



Learning anywhere

HP Chromebook 14 G7 [N5100, 4/8GB], Clamshell, 14" touchscreen (optional)					
HP Elite c640 14" G3 Chromebook [Pentium, 8GB], Clamshell, 14" touchscreen (optional)					
HP Fortis 14 inch G11 Chromebook [N100/N200, 4/8GB] Clamshell, 14" touchscreen (optional)					
HP Fortis x360 11 inch G5 Chromebook [N100/N200], 4/8GB] Convertible, 11.6" touchscreen					
HP Fortis 11 inch G10 Chromebook [N100/N200], 4/8GB] Clamshell, 11.6" touchscreen (optional)					

Advanced use

HP Elite c640 14" G3 Chromebook [i3/5/7, 8/16GB], Clamshell, 14" touchscreen (optional)					
HP Chromebox G4 [i3/i5/i7, 8/16/32GB] Mini PC					
HP Elite Dragonfly 13.5" Chromebook [i3/i5/i7, 8/16/32GB], Convertible, 13.5" touchscreen					



KEY



Chromebook Plus device or Advanced Use device qualifying for OS update to include enhanced features found on Chromebook Plus devices



Devices that have WiFi 6 enabled SKUs



Devices that have a cellular SKU



Stylus compatible  
G = Garaged stylus included

Some configurations may only be available in select markets. Please contact your OEM representative regarding the availability of specific devices and configurations. We will update with additional devices as they launch.





Learning anywhere

100e 2nd Gen MTK 2 [Kompanio 500, 4GB] Clamshell, 11.6" screen				
100e 3rd Gen [3015Ce, N4500, 4GB] Clamshell, 11.6" screen				
100e 4th Gen [Kompanio 520, 4] Clamshell, 11.6" touchscreen (optional)				
100e 4th Gen (Intel) [N100/N200, 4/8GB] Clamshell, 11.6"				
300e 3rd Gen [3015Ce, 4GB] Convertible, 11.6" touchscreen				
300e 4th Gen [Kompanio 520, 8GB] Convertible, 11.6" touchscreen				
500e 3rd Gen [N5100/6000, 4/8GB] Convertible, 11.6" touchscreen				
500e 4th Gen [N100/200, 4/8GB] Convertible, 12.2" touchscreen				
S380-14 [Kompanio 520, 8GB] Clamshell, 14" screen				
Flex 5i [i3, 4GB] [Celeron, 4GB] Convertible, 14" touchscreen				
Chromebox Mini [N4500, 4GB] Chromebox				
Duet [Kompanio 500, 4GB] Detachable, 11" touchscreen				
14e Chromebook Gen 2 [3015Ce, 4/8GB] Clamshell, 14" touchscreen (optional)				
14e Chromebook Gen 3 [Celeron, Pentium, 4/8GB] Clamshell, 14" touchscreen (optional)				
Flex 5i [i3/Pentium, 4GB] Convertible, 14" touchscreen				
ThinkCentre M60q Chromebox [Celeron, 4GB] Mini PC				

Advanced use

14e Chromebook Gen 3 [i3 N305, 8GB] Clamshell, 14" touchscreen (optional)				
ThinkPad C14 Chromebook Gen 1 [i3/5/7, 8/16GB] Clamshell, 14" touchscreen (optional)				
Flex 5i Chromebook [i3, 8GB] Convertible, 14" touchscreen				
ThinkCentre M60q Chromebox [i3/5, 8/16GB] Mini PC				

KEY



Chromebook Plus device or Advanced Use device qualifying for OS update to include enhanced features found on Chromebook Plus devices



Devices that have WiFi 6 enabled SKUs



Devices that have a cellular SKU



Stylus compatible  
G = Garaged stylus included

Some configurations may only be available in select markets. Please contact your OEM representative regarding the availability of specific devices and configurations. We will update with additional devices as they launch.


 Learning anywhere

Galaxy Chromebook Go [N4500, 4GB] Clamshell, 14" screen



Galaxy Chromebook 2 360 [N4500, 4/8GB] Convertible, 12.4" touchscreen



 Advanced use

Galaxy Chromebook 2 [i3, 8GB] Convertible, 13.3" touchscreen



Chromebook Plus device or Advanced Use device qualifying for OS update to include enhanced features found on Chromebook Plus devices  
\*Device eligible for Chromebook Plus image from M118.



Devices that have WiFi 6 enabled SKUs



Devices that have a cellular SKU



Stylus compatible  
G = Garaged stylus included

 KEY

Some configurations may only be available in select markets. Please contact your OEM representative regarding the availability of specific devices and configurations. We will update with additional devices as they launch.

Learning anywhere

Dell Chromebook 3110 [N4500, 4/8GB] Clamshell, 11.6				
Dell Chromebook 3110 (2 in 1) [N4500, 4/8GB], Convertible, 11.6" touchscreen				
Dell Chromebook 3120 [N100, 4/8GB] Clamshell, 11.6				
Dell Chromebook 3120 (2 in 1) [N100, 4/8GB], Convertible, 11.6" touchscreen				
Dell Latitude 3445 Chromebook [Athlon, R3, 4GB] Clamshell, 14" screen				

Advanced use

Latitude 5430 Chromebook [i3/i5/i7 8/16GB] Clamshell, 14" screen				
Latitude 5430 2-in-1 Chromebook [i7, 8/16GB] Convertible, 14" touchscreen				
Dell Latitude 3445 Chromebook [R3/R5, 8GB] Clamshell, 14" screen				

KEY



Chromebook Plus device or Advanced Use device qualifying for OS update to include enhanced features found on Chromebook Plus devices  
\*Device eligible for Chromebook Plus image from M118.



Devices that have WiFi 6 enabled SKUs



Devices that have a cellular SKU



Stylus compatible  
G = Garaged stylus included

Some configurations may only be available in select markets. Please contact your OEM representative regarding the availability of specific devices and configurations. We will update with additional devices as they launch.