

Welcome to the Harvard Art Museums! We are three museums—the Fogg, Busch-Reisinger, and Arthur M. Sackler—all in one building. Have fun exploring our galleries; just ask any staff member for help finding your way.

Public Programs
Check the LCD screens by admissions to see what's on today. Our online calendar has the full lineup.

Kids & Families
Sketchbooks and pencils are available at admissions. Jenny's Cafe offers several kid-friendly, nut-free snack options.

Experience More
Friends receive unparalleled access to our collections and special opportunities to engage with art. Join today at a level that best suits you, or ask about our free Global Friends membership.

Free Wi-Fi; for help connecting, stop by admissions.

Photography and filming sometimes take place in museum spaces. Visitors in museum spaces consent to appear in photographs or films made by the Harvard Art Museums for official museum purposes.

Instagram @harvardartmuseums
Facebook @harvardartmuseums
Twitter @harvartmuseums

32 Quincy Street
Cambridge, MA 02138
617-495-9400
harvardartmuseums.org

Harvard Art Museums
Fogg Museum
Busch-Reisinger Museum
Arthur M. Sackler Museum

Create your own museum adventure or let us point you in the right direction. Check out the temporary exhibitions on Level 3 or explore the diverse and expansive permanent collections.

We are committed to creating an environment that fosters inclusion and belonging. Please join us in ensuring that every visitor feels welcomed and respected. Enjoy your visit!

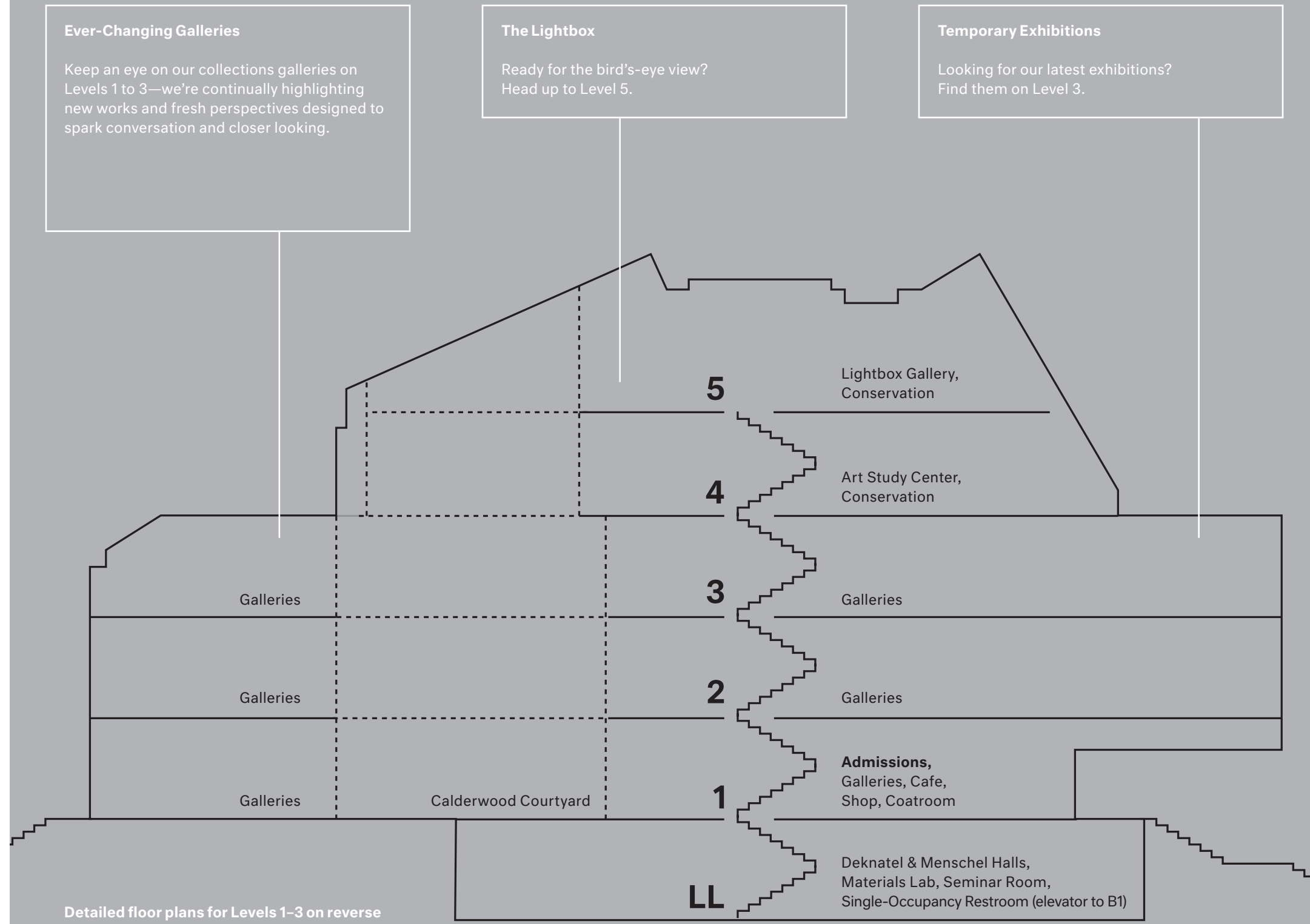
Admission & Hours
Free Every Day
Open Tuesday to Sunday, 10am–5pm
Closed major holidays
Free admission to the Harvard Art Museums is made possible by a generous contribution from the Estate of David Rockefeller and support from the Office of the President at Harvard University.

Guidelines for Your Visit
We're here to help! Stop by admissions for assistance. While our gallery attendants' primary responsibility is the safety and security of the people and the art in the museums, they are also available to help with a question or to point you in the right direction.

- Art is fragile; please don't touch.
- Sketching is encouraged. Pick up a pencil at admissions; no pens in the galleries.
- Food and drink are permitted only while seated at the cafe; please no outside food at the cafe.
- We offer complimentary lockers on Level 1 and the Lower Level; your backpack, umbrella, or any larger item must be stored.
- Please no flash, tripods, or selfie sticks for personal photography.

Accessibility
All entrances are wheelchair accessible; service animals are welcome; wheelchairs, walkers, and strollers are available to borrow; and large-print maps are available. Stop by admissions to ask about any of these services. To prearrange accommodations for any of our programs, contact am_visitorservices@harvard.edu or 617-495-9400.

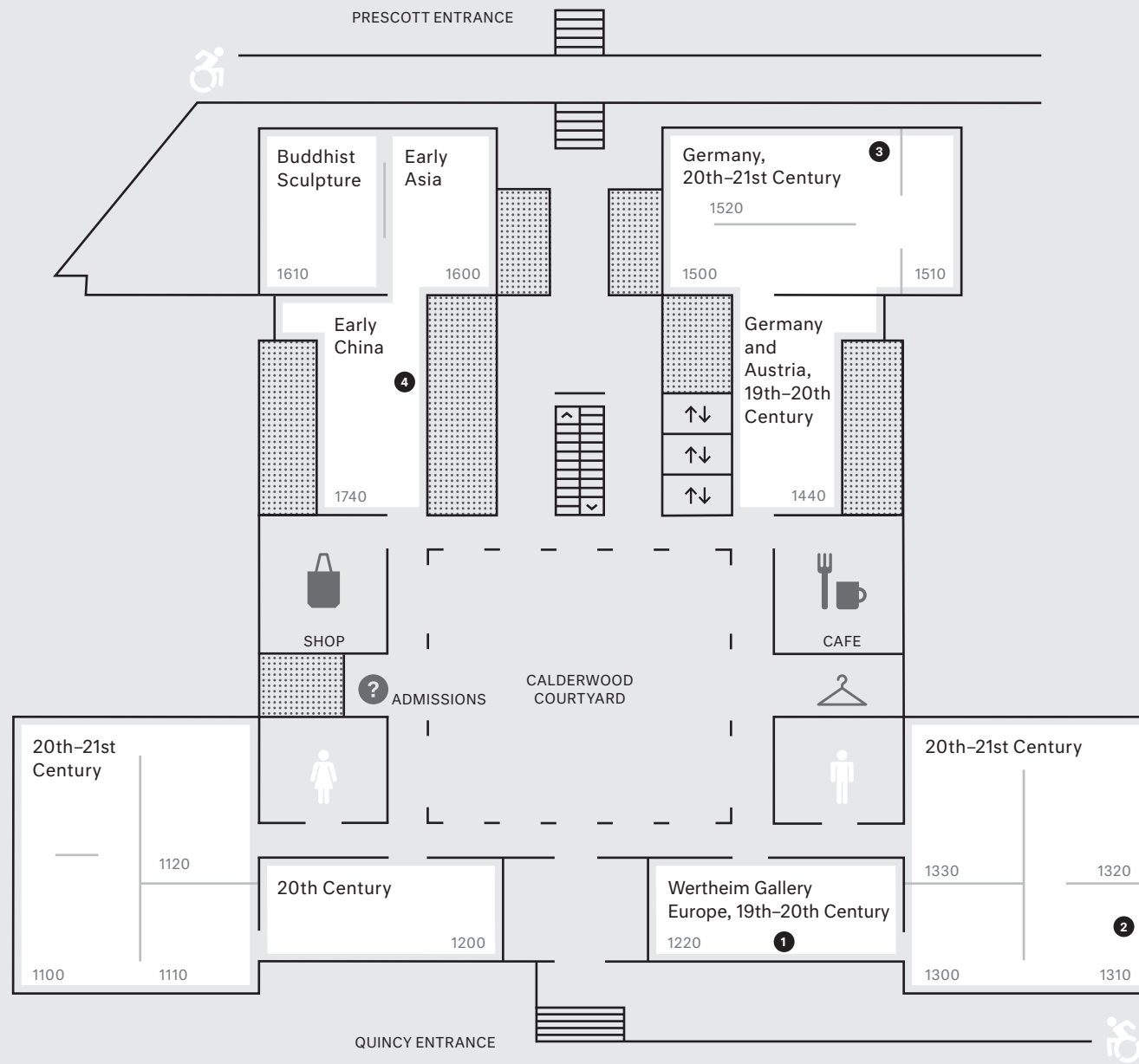
Restrooms are located on all floors and are equipped with changing tables. A single-occupancy restroom can be found on Level B1.



Detailed floor plans for Levels 1–3 on reverse



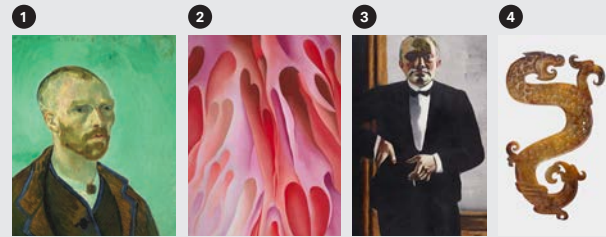
Visitor Guide



1



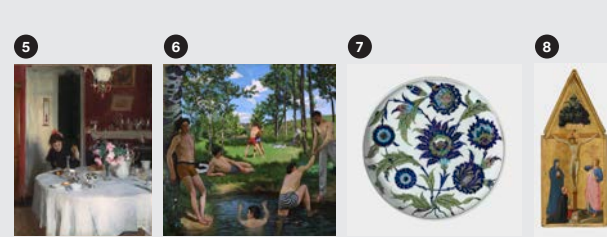
Scan here or visit hvrd.art/HAMplan1 for more information.



2



Scan here or visit hvrd.art/HAMplan2 for more information.



3



Scan here or visit hvrd.art/HAMplan3 for more information.

