

Submitted 7-22-03



Drug Facts (continued)

Stop use and ask a doctor if

- an allergic reaction occurs. Seek medical help right away.
- pain gets worse or lasts more than 10 days
- fever gets worse or lasts more than 3 days
- stomach pain or upset gets worse or lasts
- redness or swelling is present in the painful area
- any new symptoms appear

If pregnant or breast-feeding, ask a health professional before use. It is especially important not to use ibuprofen during the last 3 months of pregnancy unless definitely directed to do so by a doctor because it may cause problems in the unborn child or complications during delivery.

Drug Facts (continued)

Ask a doctor before use if you have

- stomach pain
- problems or serious side effects from taking pain relievers or fever reducers

Ask a doctor or pharmacist before use if you are

- under a doctor's care for any serious condition
- taking any other drug
- taking any other product that contains ibuprofen, or any other pain reliever/fever reducer

When using this product take with food or milk if stomach upset occurs

Pathmark SATISFACTION Quality GUARANTEED
Assured on your money back. NEVER CHARGE BACK. PLEASE INCLUDE CLEAR DATE APPROVAL FROM PATHMARK. Visit us at www.pathmark.com

DISTRIBUTED BY
PATHMARK STORES, INC.
 CARTERET, NJ 07008
 ©2003

REV # 603
 PLD 903
 F26PM40

Lot No.:
 Exp. Date:

0 4 1240 18175 3

Drug Facts (continued)

Warnings

Allergy alert: Ibuprofen may cause a severe allergic reaction which may include:

- hives
- asthma (wheezing)
- shock

Alcohol warning: If you consume 3 or more alcoholic drinks every day, ask your doctor whether you should take ibuprofen or other pain relievers/fever reducers.

Do not use if you have ever had an allergic reaction to any other pain reliever/fever reducer

Drug Facts

Active ingredient (in each capsule)
 Ibuprofen 200 mg

Purposes
 Pain reliever/fever reducer

Uses

- temporarily relieves minor aches and pains due to:
- muscular aches
- headaches
- toothache
- backache
- the common cold
- menstrual cramps
- minor pain of arthritis

temporarily reduces fever

Pathmark

Ibuprofen

CAPSULES, 200 mg
 pain reliever / fever reducer

40 SOFTGELS*
 200 mg EACH
 *LIQUID FILLED CAPSULES

Pathmark

Ibuprofen

CAPSULES, 200 mg
 pain reliever / fever reducer

40 SOFTGELS*
 200 mg EACH
 *LIQUID FILLED CAPSULES

DIE 0113C

2 1/32 x 2 1/32 x 3 7/8
 Flat size 8.625 x 9

Drug Facts (continued)

Other information

- store at 20°-25°C (68°-77°F)
- avoid high humidity and excessive heat above 40°C (104°F)
- do not use if Tamper-Evident seal under bottle cap imprinted with "Sealed for Your Protection" is broken or missing

Inactive ingredients
 FD&C Blue #1, gelatin, mannitol, pharmaceutical ink, polyethylene glycol, povidone, purified water, sorbitan, sorbitol, and vitamin E polyethylene glycol succinate

Patent # 6251426B1

Drug Facts (continued)

Keep out of reach of children. In case of overdose, get medical help or contact a Poison Control Center right away.

Directions

- do not take more than directed
- adults and children 12 years and older: 1 capsule every 4 to 6 hours while symptoms persist
- if pain or fever does not respond to 1 capsule, 2 capsules may be used
- do not exceed 6 capsules in 24 hours, unless directed by a doctor
- the smallest effective dose should be used
- children under 12 years: ask a doctor

Manufactured by: Banner Pharmaceuticals Inc., 4125 Premier Drive, High Point, NC 27285

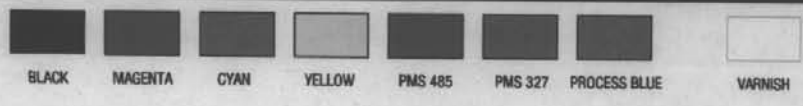
Customer: PLD
 Product Number: F26PM40
 Revision Level: _____
 Size: DIE0113C
 Artist: PAL PP#: 18409PL

Proof Date: 6-26-03
 Proofread: PAL Artist _____ D.C.

Pharmalabel
 7917 INDUSTRIAL VILLAGE ROAD, GREENSBORO, NC 27409
 PHONE 336-853-7142 • FAX 336-834-4731
 www.pharmalabel.com

1st Proof 2nd Proof 3rd Proof 4th Proof

Revise and resubmit proof Other



PHARMALABEL provides this proof to represent the image prepared for you according to the instructions provided. PHARMALABEL is not responsible for errors or omissions unless clearly indicated on this proof.
 This proof does not accurately represent the colors that will print in the finished product. Any colors that are referenced on this proof are representative only. The finished product will be printed to match the referenced Pantone Color or any approved match standard provided by the customer.

Approved By: _____

Customer: PL DEVELOPMENT
 Product Number: L26PM40
 Revision Level: PLD 3/03
 Size: 1.75 X 5.5
 Artist: PRL PP# 18407PL




Proof Date: 6-26-03
 Proofed: PRL Printer: Q.C.
Pharmalabel
 7915 INDUSTRIAL VILLAGE ROAD, GREENSBORO, NC 27409
 PHONE 336-855-7912 • FAX 336-854-3753
www.pharmalabel.com

Approved By: _____
 Date: _____

1st Proof 2nd Proof 3rd Proof 4th Proof
 Revise and resubmit proof Other _____

Pharmalabel provides this proof to represent the image prepared for you according to the instructions provided. Pharmalabel is not responsible for errors or omissions unless clearly indicated on this proof. represent the colors that will print in the finished product. Pantone colors that are referenced on this proof are for reference only. All colors will be printed to match the referenced Pantone Color or any approved match standard provided by the customer.



Ibuprofen
 Tamper-Evident
 CAPSULES, 200 mg
 pain reliever / fever reducer

40 SOFTGELS
 200 mg EACH
 TAMPER EVIDENT CAPSULES

Active ingredient (in each capsule) **Purposes**
 Ibuprofen 200 mg Pain reliever/fever reducer

Uses
 temporarily relieves minor aches and pains due to:
 headache muscular aches minor pain of arthritis
 toothache backache the common cold
 menstrual cramps temporarily reduces fever

Warnings
SEE OUTER CARTON FOR COMPLETE WARNINGS AND PRODUCT INFORMATION.
Allergy alert: Ibuprofen may cause a severe allergic reaction which may include: hives
 facial swelling asthma (wheezing) shock
Alcohol warning: If you consume 3 or more alcoholic drinks every day, ask your doctor whether you should take ibuprofen or other pain relievers/fever reducers. Ibuprofen may cause stomach bleeding.

Do not use if you have ever had an allergic reaction to any other pain reliever/fever reducer.

Stop use and ask a doctor if an allergic reaction occurs. Seek medical help right away.

Directions do not take more than directed
 adults and children 12 years and older: 1 capsule every 4 to 6 hours while symptoms persist if pain or fever does not respond to 1 capsule, 2 capsules may be used do not exceed 6 capsules in 24 hours, unless directed by a doctor the smallest effective dose should be used children under 12 years: ask a doctor

Other Information
 Store at 20°-25°C (68°-77°F)
 avoid high humidity and excessive heat above 40°C (104°F)


Manufactured by: Banner Pharmaceps Inc.
 4125 Premier Drive, High Point, NC 27265 Rev #6/03
 Patent # 6251426B1 PLD 3/03
 Distributed by: Pathmark Stores, Inc.
 Carteret, NJ 07008 ©2003 L26PM40
 Visit us at www.pathmark.com

Lot # _____
 Expiration Date _____

Ibuprofen

P

Customer: PLD Proof Date: 6-25-03 1st Proof 2nd Proof 3rd Proof 4th Proof
 Product Number: R27PM83 Proofed: PRL Revise and resubmit proof




Tamper-Evident

Ibuprofen

capsules, 200 mg
pain reliever / fever reducer

80 SOFTGELS*
200 mg EACH
*LIQUID FILLED CAPSULES



| | |
|--|--|
| <p>Active Ingredient (in each capsule) Ibuprofen 200 mg</p> | <p>Purposes Pain reliever/fever reducer</p> |
| <p>Uses ■ temporarily relieves minor aches and pains due to: ■ headache ■ muscular aches ■ minor pain of arthritis ■ toothache ■ backache ■ the common cold ■ menstrual cramps ■ temporarily reduces fever</p> | |
| <p>Warnings SEE OUTER CARTON FOR COMPLETE WARNINGS AND PRODUCT INFORMATION. Allergy alert: Ibuprofen may cause a severe allergic reaction which may include: ■ hives ■ facial swelling ■ asthma (wheezing) ■ shock Alcohol warning: If you consume 3 or more alcoholic drinks every day, ask your doctor whether you should take ibuprofen or other pain relievers/fever reducers. Ibuprofen may cause stomach bleeding. Do not use if you have ever had an allergic reaction to any other pain reliever/fever reducer. Stop use and ask a doctor if an allergic reaction occurs. Seek medical help right away. If pregnant or breast-feeding, ask a health professional before use. It is especially important not to use ibuprofen during the last 3 months of pregnancy unless definitely directed to do so by a doctor because it may cause problems in the unborn child or complications during delivery. Keep out of reach of children. In case of overdose, get medical help or contact a Poison Control Center right away.</p> | |
| <p>Directions ■ do not take more than directed ■ adults and children 12 years and older: ■ 1 capsule every 4 to 6 hours while symptoms persist ■ If pain or fever does not respond to 1 capsule, 2 capsules may be used ■ do not exceed 6 capsules in 24 hours, unless directed by a doctor ■ the smallest effective dose should be used ■ children under 12 years: ask a doctor</p> | |
| <p>Other Information ■ store at 20°-25°C (68°-77°F) ■ avoid high humidity and excessive heat above 40°C(104°F)</p> | |

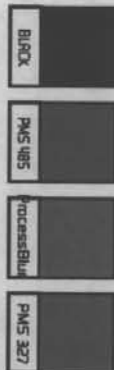
Manufactured by: Banner Pharmacaps Inc., 4125 Premier Drive, High Point, NC 27265
 Patent # 6251426B1
 Distributed by: Pathmark Stores, Inc., Carteret, NJ 07006 ©2003
 Visit us at www.pathmark.com
 Rev #6/03
 PLD 3/03
 L27PM80
 Lot # _____
 Expiration Date _____

Customer: PL DEVELOPMENT
 Product Number: L27PM80
 Revision Level: PLD 3/03
 Size: 2,125 X 6,25
 Artist: PRL PP# 18406PL

Proof Date: 6-26-03
 Proofread: PRL Q.C.
 Artist: _____
Pharmalabel
 7015 INDUSTRIAL WILDFE ROAD, GREENSBORO, NC 27409
 PHONE 336-855-7162 • FAX 336-851-3753
www.pharmalabel.com

1st Proof
 2nd Proof
 3rd Proof
 4th Proof
 Other
 Revise and resubmit proof

Pharmalabel provides this proof to assist the lines prepared for you according to the instructions provided. PHARMALABEL is not responsible for errors or omissions unless clearly indicated on this proof. This proof does not accurately represent the colors that will print in the finished product. Any colors that are referenced on this proof are representative only. The finished product will be printed to match the referenced Pantone Color or any approved match standard provided by the customer.



Approved By: _____
 Date: _____



Drug Facts (continued)

Do not use if you have ever had an allergic reaction to any other pain reliever/fever reducer.

Ask a doctor before use if you have

- stomach pain
- problems or serious side effects from taking pain relievers or fever reducers

Ask a doctor or pharmacist before use if you are

- under a doctor's care for any serious condition
- taking any other drug
- taking any other product that contains ibuprofen, or any other pain reliever/fever reducer.

When using this product take with food or milk if stomach upset occurs.

Stop use and ask a doctor if

- an allergic reaction occurs. Seek medical help right away.
- pain gets worse or lasts more than 10 days
- fever gets worse or lasts more than 3 days
- stomach pain or upset gets worse or lasts
- redness or swelling is present in the mouth area

Drug Facts

Active ingredient
(in each capsule) Ibuprofen 200 mg

Purposes
Pain reliever/fever reducer

Uses
Ibuprofen 200 mg

Warnings
Allergy alert: Ibuprofen may cause a severe allergic reaction which may include:
 ■ hives
 ■ asthma (wheezing)
 ■ shock
 ■ facial swelling

Alcohol warning: If you consume 3 or more alcoholic drinks every day, ask your doctor whether you should take ibuprofen or other pain relievers/fever reducers.

Pathmark.

Ibuprofen

CAPSULES, 200 mg
pain reliever / fever reducer

180 SOFTGELS*
200 mg EACH
*LIQUID FILLED CAPSULES



QUALITY SEAL GUARANTEED

rk.

Pathmark.

Ibuprofen

CAPSULES, 200 mg
pain reliever / fever reducer

180 SOFTGELS*
200 mg EACH
*LIQUID FILLED CAPSULES



QUALITY SEAL GUARANTEED

Pathmark.

Ibuprofen

CAPSULES, 200 mg
pain reliever / fever reducer

180 SOFTGELS*
200 mg EACH
*LIQUID FILLED CAPSULES



QUALITY SEAL GUARANTEED

Drug Facts (continued)

Other information

- store at 20°-25°C (68°-77°F)
- avoid high humidity and excessive heat above 40°C (104°F)
- do not use if tamper-evident seal under bottle cap imprinted with "Sealed for Your Protection" is broken or missing

Inactive ingredients
FD&C Blue #1, gelatin, mannitol, pharmaceutical ink, polyethylene glycol, povidone, purified water, sorbitan, sorbitol, and vitamin E polyethylene glycol succinate.

Manufactured by: Banner Pharmcaps Inc.
4125 Premier Drive, High Point, NC 27265
Patent # 625142681
DISTRIBUTED BY: PATHMARK STORES, INC.
CARTERET, NJ 07008 ©2003

Pathmark SATISFACTION GUARANTEED
ASK FOR YOUR MONEY BACK.
PLEASE INCLUDE COPY DATE INFORMATION WITH PRODUCT.

Visit us at www.pathmark.com

Drug Facts (continued)

Directions

- do not take more than directed
- adults and children 12 years and older:
- 1 capsule every 4 to 6 hours while symptoms persist
- if pain or fever does not respond to 1 capsule, 2 capsules may be used
- do not exceed 6 capsules in 24 hours, unless directed by a doctor
- the smallest effective dose should be used
- children under 12 years: ask a doctor

Keep out of reach of children. In case of overdose, get medical help or contact a Poison Control Center right away.

If pregnant or breast-feeding, ask a health professional before use. It is especially important not to use ibuprofen during the last 3 months of pregnancy unless advised by a doctor to do so by a doctor because it may cause problems in the unborn child or complications during delivery.

Customer: PLD Proof Date: 7-11-03

Product Number: F28PM180 Proofread: PAL

Revision Level: _____ Artist _____ o.c.

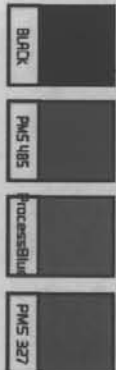
Size: DIE0236C **Pharmalabel** Revise and resubmit proof

Customer: PL DEVELOPMENT
 Product Number: L28PM180
 Revision Level: PLD 3/03
 Size: 2.625 X 6.625
 Artist: PRL PP# 18405PL

Proof Date: 6-26-03
 Proofread: PRL Q.C.
 Print: _____
Pharmalabel
 7915 INDUSTRIAL VALLEY ROAD, GREENSBORO, NC 27409
 PHONE 336-855-7142 • FAX 336-854-3753
 www.pharmalabel.com

1st Proof 2nd Proof 3rd Proof 4th Proof Other
 Revise and resubmit proof
 PHARMALABEL provides this proof to represent the image prepared for you according to the instructions provided. PHARMALABEL is not responsible for errors or omissions unless clearly indicated on this proof. Increment the colors that will print in the finished product. Print colors that are referenced on this proof are spot colors. The final product will be printed to match the referenced Pantone Color or any approved match standard provided by the customer.

Approved By: _____
 Date: _____



Tamper-Evident

Ibuprofen

CAPSULES, 200 mg

pain reliever / fever reducer

* LIQUID FILLED CAPSULES

Active ingredient (In each capsule)

Ibuprofen 200 mg Pain reliever/fever reducer

Uses

- temporarily relieves minor aches and pains due to:
 - headache
 - toothache
 - menstrual cramps
- muscular aches
- backache
- temporarily reduces fever
- minor pain of arthritis
- the common cold

Warnings

SEE OUTER CARTON FOR COMPLETE WARNINGS AND PRODUCT INFORMATION.

Allergy alert: Ibuprofen may cause a severe allergic reaction which may include: ■ hives ■ facial swelling ■ asthma (wheezing) ■ shock

Alcohol warning: If you consume 3 or more alcoholic drinks every day, ask your doctor whether you should take ibuprofen or other pain relievers/fever reducers. Ibuprofen may cause stomach bleeding.

Do not use if you have ever had an allergic reaction to any other pain reliever/fever reducer.

Stop use and ask a doctor if an allergic reaction occurs. Seek medical help right away.

If pregnant or breast-feeding, ask a health professional before use. It is especially important not to use ibuprofen during the last 3 months of pregnancy unless definitely directed to do so by a doctor because it may cause problems in the unborn child or complications during delivery.

Keep out of reach of children. In case of overdose, get medical help or contact a Poison Control Center right away.

Directions

- do not take more than directed
- adults and children 12 years and older:
 - 1 capsule every 4 to 6 hours while symptoms persist
 - if pain or fever does not respond to 1 capsule, 2 capsules may be used
 - do not exceed 6 capsules in 24 hours, unless directed by a doctor
 - the smallest effective dose should be used
- children under 12 years: ask a doctor

Other information

- store at 20°-25°C (68°-77°F)
- avoid high humidity and excessive heat above 40°C (104°F)
- do not use if Tamper-Evident seal under bottle cap imprinted with "Sealed for Your Protection" is broken or missing

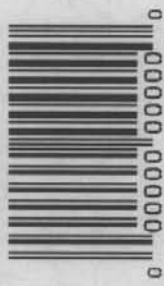
Manufactured by: Banner Pharmacaps Inc.
 4125 Premier Drive, High Point, NC 27285
 Patent # 6251428B1

Distributed by: Pathmark Stores, Inc., Carteret, NJ 07006 ©2003
 Visit us at www.pathmark.com

REV # 6/03
 PLD 3/03
 L28PM180

Lot # _____
 Expiration Date _____

Submitted 7-22-03



Lot No.:
Exp. Date:

Drug Facts (continued)

Stop use and ask a doctor if

- an allergic reaction occurs. Seek medical help right away.
- pain gets worse or lasts more than 10 days
- fever gets worse or lasts more than 3 days
- stomach pain or upset gets worse or lasts
- redness or swelling is present in the painful area
- any new symptoms appear

If pregnant or breast-feeding, ask a health professional before use. It is especially important not to use ibuprofen during the last 3 months of pregnancy unless definitely directed to do so by a doctor because it may cause problems in the unborn child or complications during delivery.

Drug Facts (continued)

Ask a doctor before use if you have

- stomach pain
- problems or serious side effects from taking pain relievers or fever reducers

Ask a doctor or pharmacist before use if you are

- under a doctor's care for any serious condition
- taking any other drug
- taking any other product that contains ibuprofen, or any other pain reliever/fever reducer

When using this product take with food or milk if stomach upset occurs

Drug Facts (continued)

Warnings

Allergy alert: Ibuprofen may cause a severe allergic reaction which may include: ■ facial swelling ■ hives ■ asthma (wheezing) ■ shock

Alcohol warning: If you consume 3 or more alcoholic drinks every day, ask your doctor whether you should take ibuprofen or other pain relievers/fever reducers. Ibuprofen may cause stomach bleeding.

Do not use if you have ever had an allergic reaction to any other pain reliever/fever reducer

Drug Facts

Active Ingredient (in each capsule)

Ibuprofen 200 mg

Purposes

- Pain reliever/fever reducer

Uses

- temporarily relieves minor aches and pains due to:
 - headache
 - muscular aches
 - toothache
 - backache
 - the common cold
 - menstrual cramps
 - minor pain or arthritis
- temporarily reduces fever

NDC 00-000-00000

Ibuprofen Capsules

200 mg

Pain Reliever/Fever Reducer

40 Softgels*
***Liquid filled capsules**



Manufactured By: Banner Pharmaceuticals Inc.,
4125 Premier Drive, High Point, NC 27265
Distributed by:

Patent# 6251426B1
REV#9/02
PLD
P26

KEEP OUTER CARTON FOR COMPLETE

Drug Facts (continued)

Other Information

- store at 20°-25°C (68°-77°F)
- avoid high humidity and excessive heat above 40°C (104°F)
- do not use if tamper-evident seal under bottle cap imprinted with Sealed for Your Protection is broken or missing

Inactive Ingredients

FD&C Blue #1, gelatin, mannitol, pharmaceutical ink, polyethylene glycol, povidone, purified water, sorbitan, sorbitol, and vitamin E polyethylene glycol succinate

Drug Facts (continued)

Keep out of reach of children. In case of overdose, get medical help or contact a Poison Control Center right away.

Directions

- do not take more than directed
- adults and children 12 years and older: 1 capsule, 2 capsules may be used
- if pain or fever does not respond to 1 capsule, 2 capsules may be used
- do not exceed 6 capsules in 24 hours, unless directed by a doctor
- the smallest effective dose should be used
- children under 12 years: ask a doctor

NDC 000000-0000-00

Tamper-Evident
Ibuprofen Capsules
200 mg
Pain Reliever/Fever Reducer
40 Softgels*

*Liquid filled capsules

| Active ingredient (In each capsule) | Purposes |
|--|-----------------------------|
| Ibuprofen 200 mg | Pain reliever/fever reducer |

Uses

- temporarily relieves minor aches and pains due to:
- headache ■ muscular aches ■ minor pain of arthritis
- toothache ■ backache ■ the common cold
- menstrual cramps ■ temporarily reduces fever

Warnings

SEE OUTER CARTON FOR COMPLETE WARNINGS AND PRODUCT INFORMATION.

Allergy alert: Ibuprofen may cause a severe allergic reaction which may include: ■ hives ■ facial swelling ■ asthma (wheezing) ■ shock

Alcohol warning: If you consume 3 or more alcoholic drinks every day, ask your doctor whether you should take ibuprofen or other pain relievers/fever reducers. Ibuprofen may cause stomach bleeding.

Do not use if you have ever had an allergic reaction to any other pain reliever/fever reducer.

Stop use and ask a doctor if an allergic reaction occurs. Seek medical help right away.

Directions ■ do not take more than directed ■ adults and children 12 years and older: ■ 1 capsule every 4 to 6 hours while symptoms persist ■ if pain or fever does not respond to 1 capsule, 2 capsules may be used ■ do not exceed 6 capsules in 24 hours, unless directed by a doctor ■ the smallest effective dose should be used ■ children under 12 years: ask a doctor

Other Information

- Store at 20°-25°C (68°-77°F)
- avoid high humidity and excessive heat above 40°C (104°F)

Distributed by: xxxxxxxxxxxxxxxxxxxx
 xxxxxxxxxxxxxxxxxxxx
 Patent #6251426B1

Rev #09/02
 PLD XXXXX
 XXXXXXX
 Lot #
 Expiration Date

Customer: PL Developments
 Product Number: Ibuprofen 40ct label
 Revision Level: Rev# 09/02
 Size: 1.75 X 5.5
 Artist: CRK PP#

Proof Date: 6/17/03
 Proofread: Artist D.C.


Pharmalabel


7815 INDUSTRIAL VILLAGE ROAD, GREENSBORO, NC 27409
 PHONE 336-855-7142 • FAX 336-854-3753
 www.pharmalabel.com


1st 2nd Proof 3rd 4th Proof Other


Revise and resubmit proof


PHARMALABEL provides this proof to represent the image prepared for you according to the instructions provided. PHARMALABEL is not responsible for errors or omissions unless clearly indicated on this proof. This proof does not accurately represent the colors that will print in the finished product. Full colors that are referenced on this proof are representative only. The finished product will be printed to match the referenced Pantone Color or any approved match standard provided by the customer.

CMYK 

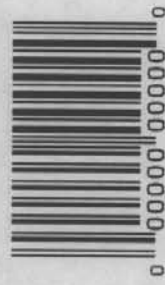
PMS XXX 

PMS XXX 

PMS XXX 

VERSION 

Approved By: _____
 Date: _____



Drug Facts (continued)

When using this product take with food or milk if stomach upset occurs

Stop use and ask a doctor if

- an allergic reaction occurs. Seek medical help right away.
- pain gets worse or lasts more than 10 days
- fever gets worse or lasts more than 3 days
- stomach pain or upset gets worse or lasts
- redness or swelling is present in the painful area
- any new symptoms appear

If pregnant or breast-feeding, ask a health professional before use. It is especially important not to use ibuprofen during the last 3 months of pregnancy unless definitely directed to do so by a doctor because it may cause problems in the unborn child or complications during delivery.

Drug Facts (continued)

Directions

- do not take more than directed
- adults and children 12 years and older: 1 capsule every 4 to 6 hours while symptoms persist
- if pain or fever does not respond to 1 capsule, 2 capsules may be used
- do not exceed 6 capsules in 24 hours, unless directed by a doctor
- the smallest effective dose should be used
- children under 12 years: ask a doctor

Keep out of reach of children. In case of overdose, get medical help or contact a Poison Control Center right away.

Drug Facts

Active ingredient (in each capsule)
Ibuprofen 200 mg

Uses
temporarily relieves minor aches and pains due to:
 ■ headache ■ muscular aches ■ minor pain of arthritis ■ toothache ■ backache ■ the common cold

temporarily reduces fever

Warnings
 Allergy alert: Ibuprofen may cause a severe allergic reaction which may include:
 ■ facial swelling ■ asthma (wheezing) ■ shock

Drug Facts (continued)

Alcohol warning: If you consume 3 or more alcoholic drinks every day, ask your doctor whether you should take ibuprofen or other pain relievers/fever reducers. Ibuprofen may cause stomach bleeding.

Do not use if you have ever had an allergic reaction to any other pain reliever/fever reducer

Ask a doctor before use if you have
 ■ stomach pain
 ■ problems or serious side effects from taking pain relievers or fever reducers

Ask a doctor or pharmacist before use if you are
 ■ under a doctor's care for any serious condition
 ■ taking any other drug
 ■ taking any other product that contains ibuprofen, or any other pain reliever/fever reducer

Drug Facts (continued)

Other information
 ■ store at 20°-25°C (68°-77°F)
 ■ avoid high humidity and excessive heat above 40°C (104°F)
 ■ do not use if Tamper-Evident seal under bottle cap imprinted with "Sealed for Your Protection" is broken or missing

Inactive ingredients
 FD&C Blue #1, gelatin, mannitol, pharmaceutical ink, polyethylene glycol, povidone, purified water, sorbitan, sorbitol, and vitamin E polyethylene glycol succinate

Drug Facts (continued)

Alcohol warning: If you consume 3 or more alcoholic drinks every day, ask your doctor whether you should take ibuprofen or other pain relievers/fever reducers. Ibuprofen may cause stomach bleeding.

Do not use if you have ever had an allergic reaction to any other pain reliever/fever reducer

Ask a doctor before use if you have
 ■ stomach pain
 ■ problems or serious side effects from taking pain relievers or fever reducers

Ask a doctor or pharmacist before use if you are
 ■ under a doctor's care for any serious condition
 ■ taking any other drug
 ■ taking any other product that contains ibuprofen, or any other pain reliever/fever reducer



NDC 000-000-0000 30M

Ibuprofen Capsules

200 mg

Pain Reliever/Fever Reducer

80 Softgels*
*Liquid filled capsules

Ibuprofen Capsules
200 mg
Pain Reliever/Fever Reducer
80 Softgels*
*Liquid filled capsules

Patent #625142681
REV#09/02
PLD
F27

Manufactured By: Banner Pharmaceuticals Inc.
4125 Premier Drive, High Point, NC 27265
Distributed by:



NDC 000000-0000-00

Tamper-Evident
Ibuprofen Capsules
 200 mg
 Pain Reliever/Fever Reducer

80 Softgels*
 *Liquid filled capsules

| | |
|--|--|
| Active ingredient (in each capsule) Ibuprofen 200 mg | Purposes Pain reliever/fever reducer |
|--|--|

Uses ■ temporarily relieves minor aches and pains due to:
 ■ headache ■ muscular aches ■ minor pain of arthritis
 ■ toothache ■ backache ■ the common cold
 ■ menstrual cramps ■ temporarily reduces fever

Warnings
SEE OUTER CARTON FOR COMPLETE WARNINGS AND PRODUCT INFORMATION.
Allergy alert: Ibuprofen may cause a severe allergic reaction which may include: ■ hives ■ facial swelling
 ■ asthma (wheezing) ■ shock
Alcohol warning: If you consume 3 or more alcoholic drinks every day, ask your doctor whether you should take ibuprofen or other pain relievers/fever reducers.
 Ibuprofen may cause stomach bleeding.
Do not use if you have ever had an allergic reaction to any other pain reliever/fever reducer.
Stop use and ask a doctor if an allergic reaction occurs. Seek medical help right away.
If pregnant or breast-feeding, ask a health professional before use. It is especially important not to use ibuprofen during the last 3 months of pregnancy unless definitely directed to do so by a doctor because it may cause problems in the unborn child or complications during delivery.
Keep out of reach of children. In case of overdose, get medical help or contact a Poison Control Center right away.

Directions
 ■ do not take more than directed ■ adults and children 12 years and older: ■ 1 capsule every 4 to 6 hours while symptoms persist
 ■ if pain or fever does not respond to 1 capsule, 2 capsules may be used ■ do not exceed 6 capsules in 24 hours, unless directed by a doctor
 ■ the smallest effective dose should be used
 ■ children under 12 years: ask a doctor

Other Information ■ store at 20°-25°C (68°-77°F)
 ■ avoid high humidity and excessive heat above 40°C(104°F)

Distributed by: xxxxxxxx
 xxxxxxxx
 Patent #6251426B1
 Rev #09/02
 PLD XXXX
 XXXXXX

Lot # _____
 Expiration Date _____

Customer: _____ PL Developments
 Product Number: Ibuprofen 80c1 label
 Revision Level: _____ Rev# 09/02
 Size: 2.125 X 6.25
 Artist: CRK PP# _____

Proof Date: 6/17/03
 Proofread: _____ Artist _____ D.C. _____
Pharmalabel
 7915 INDUSTRIAL WILSON RD. GREENSBORO, NC 27409
 PHONE 336-855-7192 • FAX 336-854-5753
 www.pharmalabel.com

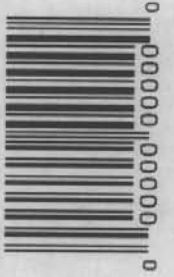
1st 2nd Proof 3rd 4th Proof Other

Revise and resubmit proof

PHARMALABEL provides this proof to represent the image prepared for you according to the instructions on the order form. PHARMALABEL is not responsible for errors or omissions unless clearly indicated on this proof.
 This proof does not accurately represent the colors that will print in the finished product. Any colors that are referenced on this proof are representative only. The finished product will be printed to match the referenced Pantone Color or any approved match standard provided by the customer.

M K
 CMYK
 PMS XXX
 PMS XXX
 PMS XXX
 VERMISH

Approved By: _____
 Date: _____



Drug Facts (continued)

Directions

- do not take more than directed
- adults and children 12 years and older: 1 capsule every 4 to 6 hours while symptoms persist
- if pain or fever does not respond to 1 capsule, 2 capsules may be used
- do not exceed 6 capsules in 24 hours, unless directed by a doctor
- the smallest effective dose should be used
- children under 12 years: ask a doctor

Keep out of reach of children. In case of overdose, get medical help or contact a Poison Control Center right away.

If pregnant or breast-feeding, ask a health professional before use. It is especially important to use ibuprofen during the last 3 months of pregnancy unless definitely directed to do so by a doctor because it may cause problems in the unborn child or complications during delivery.

Keep out of reach of children. In case of overdose, get medical help or contact a Poison Control Center right away.

Drug Facts (continued)

Drug Facts (continued)

Other Information

- store at 20°-25° C (68°-77° F)
- avoid high humidity and excessive heat above 40° C (104° F)
- do not use if Tamper-Evident seal under bottle cap is imprinted with "Sealed for Your Protection" is broken or missing

Inactive Ingredients

FD&C Blue #1, gelatin, mannitol, pharmaceutical ink, polyethylene glycol, povidone, purified water, sorbitan, sorbitol, and vitamin E poly(ethylene glycol) succinate

Manufactured By: Banner Pharmaceuticals Inc., 4125 Premier Drive, High Point, NC 27265

Distributed by:

REV#9/02
P93XXX

Drug Facts

Active ingredient (in each capsule)

Ibuprofen 200 mg

Purposes

Pain reliever/fever reducer

Uses

temporarily relieves minor aches and pains due to:

- headache
- muscular aches
- minor pain of arthritis
- toothache
- backache
- menstrual cramps

temporarily reduces fever

Warnings

Allergy alert: Ibuprofen may cause a severe allergic reaction which may include:

- facial swelling
- shock
- asthma (wheezing)

Alcohol warning: If you consume 3 or more alcoholic drinks every day, ask your doctor whether you should take ibuprofen or other pain relievers/fever reducers. Ibuprofen may cause stomach bleeding.

Drug Facts (continued)

Drug Facts (continued)

Do not use if you have ever had an allergic reaction to any other pain reliever/fever reducer

Ask a doctor before use if you have

- stomach pain
- problems or serious side effects from taking pain relievers or fever reducers

Ask a doctor or pharmacist before use if you are

- under a doctor's care for any serious condition
- taking any other drug
- taking any other product that contains ibuprofen, or any other pain reliever/fever reducer

When using this product take with food or milk if stomach upset occurs

Stop use and ask a doctor if

- an allergic reaction occurs. Seek medical help right away.
- pain gets worse or lasts more than 10 days
- fever gets worse or lasts more than 3 days
- stomach pain or upset gets worse or lasts
- redness or swelling is present in the painful area
- any new symptoms appear

Drug Facts (continued)

Ibuprofen Capsules 200 mg

Pain Reliever/Fever Reducer

135 Softgels*
*Liquid filled capsules

Ibuprofen Capsules 200 mg

Pain Reliever/Fever Reducer

135 Softgels*
*Liquid filled capsules



NDC 00-000-00000 NDC

Ibuprofen Capsules 200 mg

Pain Reliever/Fever Reducer

135 Softgels*
*Liquid filled capsules

Ibuprofen Capsules 200 mg

Pain Reliever/Fever Reducer

135 Softgels*
*Liquid filled capsules



NDC 00-000-00000 NDC



NDC 000100-0000-00

Tamper-Evident

Ibuprofen Capsules

200 mg

Pain Reliever/Fever Reducer

135 Softgels*

*Liquid filled capsules

| Active ingredient (in each capsule) | Purposes |
|-------------------------------------|-----------------------------|
| Ibuprofen 200 mg | Pain reliever/fever reducer |

Uses

- temporarily relieves minor aches and pains due to:
- headache ■ muscular aches ■ minor pain of arthritis ■ toothache
- backache ■ the common cold ■ menstrual cramps
- temporarily reduces fever

Warnings
SEE OUTER CARTON FOR COMPLETE WARNINGS AND PRODUCT INFORMATION.

Allergy alert: Ibuprofen may cause a severe allergic reaction which may include: ■ hives ■ facial swelling ■ asthma (wheezing) ■ shock

Alcohol warning: If you consume 3 or more alcoholic drinks every day, ask your doctor whether you should take ibuprofen or other pain relievers/fever reducers. Ibuprofen may cause stomach bleeding.

Do not use if you have ever had an allergic reaction to any other pain reliever/fever reducer.

Stop use and ask a doctor if an allergic reaction occurs. Seek medical help right away.

If pregnant or breast-feeding, ask a health professional before use. It is especially important not to use ibuprofen during the last 3 months of pregnancy unless definitely directed to do so by a doctor because it may cause problems in the unborn child or complications during delivery.

Keep out of reach of children. In case of overdose, get medical help or contact a Poison Control Center right away.

Directions

- do not take more than directed
- adults and children 12 years and older:
 - 1 capsule every 4 to 6 hours while symptoms persist
 - if pain or fever does not respond to 1 capsule, 2 capsules may be used
 - do not exceed 6 capsules in 24 hours, unless directed by a doctor
 - the smallest effective dose should be used
- children under 12 years: ask a doctor

Other information

- store at 20°-25°C (68°-77°F)
- avoid high humidity and excessive heat above 40°C (104°F)
- do not use if Tamper-Evident seal under bottle cap imprinted with "Sealed for Your Protection" is broken or missing


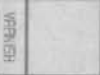
Distributed by: xxxxxxx
 Patent #6251428B1
 Rev #09/02
 P.L.D. XXXXX
 XXXXXX
 Lot #
 Expiration Date

Customer: _____ PL Developments
 Product Number: _____ Ibuprofen 135ct label
 Revision Level: _____ Rev# 09/02
 Size: _____ 2.375 X 6
 Artist: _____ CRK _____ PP# _____

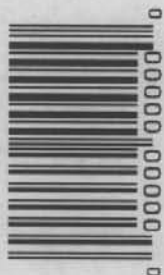
Proof Date: _____ 6/17/03
 Proofread: _____ RHE _____ G.C.
Pharmalabel
 7915 INDUSTRIAL VILLAGE ROAD, GREENSBORO, NC 27409
 PHONE 336-855-7142 • FAX 336-854-3753
 www.pharmalabel.com

1st
 2nd Proof
 3rd
 4th Proof
 _____ Other
 Revise and resubmit proof

PHARMALABEL provides this proof to represent the image prepared for you according to the instructions provided. PHARMALABEL is not responsible for errors or omissions unless clearly indicated on this proof. This proof does not accurately represent the colors that will print in the finished product. All artwork must be submitted in color and at the appropriate resolution. The finished product will be printed to match the referenced Pantone Color or any approved PMS color standard provided by the customer.

CMYK 
 PMS XXX 
 PMS XXX 
 PMS XXX 
 VERBODEN 

Approved By: _____
 Date: _____



Drug Facts (continued)

If pregnant or breast-feeding, ask a health professional before use. It is especially important not to use Ibuprofen during the last 3 months of pregnancy unless definitely directed to do so by a doctor because it may cause problems in the unborn child or complications during delivery.

Keep out of reach of children. In case of overdose, get medical help or contact a Poison Control Center right away.

Directions

- do not take more than directed
- adults and children 12 years and older: 1 capsule every 4 to 6 hours while symptoms persist
- if pain or fever does not respond to 1 capsule, 2 capsules may be used
- do not exceed 6 capsules in 24 hours, unless directed by a doctor
- the smallest effective dose should be used
- children under 12 years: ask a doctor

Drug Facts (continued)

Other Information

- store at 20°-25° C (68°-77° F)
- avoid high humidity and excessive heat above 40° C (104° F)
- do not use if Tamper-Evident seal under bottle cap is broken or missing

Inactive Ingredients

FD&C Blue #1, gelatin, mannitol, pharmaceutical ink, polyethylene glycol, povidone, purified water, sorbitan, sorbitol, and vitamin E polyethylene glycol succinate

Manufactured by: Banner Pharmaceuticals Inc., 4125 Premier Drive, High Point, NC 27265

Distributed by:

REV#9/02
F93XXX

Drug Facts

Active ingredient (in each capsule).....Ibuprofen 200 mg

Purposes.....Pain reliever/fever reducer

Uses

- temporarily relieves minor aches and pains due to:
 - headache
 - muscular aches
 - minor pain of arthritis
 - toothache
 - backache
 - the common cold
- temporarily reduces fever
- menstrual cramps

Warnings

Allergy alert: Ibuprofen may cause a severe allergic reaction which may include:

- hives
- facial swelling
- asthma (wheezing)
- shock

Alcohol warning: If you consume 3 or more alcoholic drinks every day, ask your doctor whether you should take Ibuprofen or other pain relievers/fever reducers. Ibuprofen may cause stomach bleeding.

Drug Facts (continued)

Do not use if you have ever had an allergic reaction to any other pain reliever/fever reducer

Ask a doctor before use if you have

- stomach pain
- problems or serious side effects from taking pain relievers or fever reducers

Ask a doctor or pharmacist before use if you are

- under a doctor's care for any serious condition
- taking any other drug
- taking any other product that contains ibuprofen, or any other pain reliever/fever reducer

When using this product take with food or milk if stomach upset occurs

Stop use and ask a doctor if

- an allergic reaction occurs. Seek medical help right away.
- pain gets worse or lasts more than 10 days
- fever gets worse or lasts more than 3 days
- stomach pain or upset gets worse or lasts
- redness or swelling is present in the painful area
- any new symptoms appear

00-000-00000 NDC

Ibuprofen Capsules 200 mg

Pain Reliever/Fever Reducer

180 Softgels*
*Liquid filled capsules



Ibuprofen Capsules 200 mg

Pain Reliever/Fever Reducer

180 Softgels*
Liquid filled capsules

00-000-00000 NDC

Ibuprofen Capsules 200 mg

Pain Reliever/Fever Reducer

180 Softgels*
*Liquid filled capsules

NDC 0000-0000-00
 Tamper-Evident
Ibuprofen Capsules
200 mg
 Pain Reliever/Fever Reducer
 180 Softgels*
 *Liquid filled capsules

Active ingredient (in each capsule) **Purposes**
 Ibuprofen 200 mg Pain reliever/fever reducer

Uses
 ■ temporarily relieves minor aches and pains due to:
 ■ headache ■ muscular aches ■ minor pain of arthritis
 ■ toothache ■ backache ■ the common cold
 ■ menstrual cramps
 ■ temporarily reduces fever

Warnings
SEE OUTER CARTON FOR COMPLETE WARNINGS AND PRODUCT INFORMATION.
Allergy alert: Ibuprofen may cause a severe allergic reaction which may include: ■ hives ■ facial swelling ■ asthma (wheezing) ■ shock
Alcohol warning: If you consume 3 or more alcoholic drinks every day, ask your doctor whether you should take ibuprofen or other pain relievers/fever reducers. Ibuprofen may cause stomach bleeding.
Do not use if you have ever had an allergic reaction to any other pain reliever/fever reducer.
Stop use and ask a doctor if an allergic reaction occurs. Seek medical help right away.

If pregnant or breast-feeding, ask a health professional before use. It is especially important not to use ibuprofen during the last 3 months of pregnancy unless definitely directed to do so by a doctor because it may cause problems in the unborn child or complications during delivery.
Keep out of reach of children. In case of overdose, get medical help or contact a Poison Control Center right away.

Directions
 ■ do not take more than directed
 ■ adults and children 12 years and older:
 ■ 1 capsule every 4 to 6 hours while symptoms persist
 ■ if pain or fever does not respond to 1 capsule, 2 capsules may be used
 ■ do not exceed 6 capsules in 24 hours, unless directed by a doctor
 ■ the smallest effective dose should be used
 ■ children under 12 years: ask a doctor

Other information
 ■ store at 20-25°C (68-77°F)
 ■ avoid high humidity and excessive heat above 40°C (104°F)
 ■ do not use if Tamper-Evident seal under bottle cap imprinted with "Sealed for Your Protection" is broken or missing

Distributed by: xxxxxxxxxxxxxxxx
 xxxxxxxxxxxxxxxx

Patent #xxxxxxxx
 Rev #09/02
 P.L.O. XXXX
 XXXXXX

Lot #
 Expiration Date

Customer: _____ PL Developments
 Product Number: Ibuprofen 180ct label
 Revision Level: _____ Rev# 09/02
 Size: _____ 2.625 X 6.625
 Artist: _____ CRK _____ PP# _____

Proof Date: _____ 6/17/03
 Proofread: _____ Artist _____ D.C.
Pharmalabel
 7915 INDUSTRIAL VILLAGE ROAD, GREENSBORO, NC 27409
 PHONE 336-855-7142 • FAX 336-854-3753
 www.pharmalabel.com

1st Proof 2nd Proof 3rd Proof 4th Proof _____ Other
 Revise and resubmit proof
 PHARMALABEL provides this proof to reviewer at the image prepared for you according to the instructions provided. PHARMALABEL is not responsible for errors or omissions unless clearly indicated on this proof.
 This proof does not accurately represent the colors that will print in the finished product. Review the color on this proof and make any necessary changes to the product. The final product will be printed to match the reviewed Pantone Color or any approved match standard provided by the customer.

Approved By: _____
 Date: _____

M L
 K Y
 CMYK
 PMS XXX
 PMS XXX
 PMS XXX
 VERNICH