

MEDIA CONTACT
VALENTINA
BONAPARTE
detrmedia@detr.nv.gov



JOE LOMBARDO
GOVERNOR
CHRISTOPHER SEWELL
DIRECTOR
DAVID SCHMIDT
CHIEF ECONOMIST

PRESS RELEASE

COUNTIES AND CITIES PRESS RELEASE

For Immediate Release
July 23, 2024

Unemployment rate increases in June

According to the Nevada Department of Employment, Training and Rehabilitation's ([DETR](#)) June 2024 economic report, the state's seasonally adjusted unemployment rate was 5.2 percent in June 2024 which increased by 0.1 percentage point from May 2024. Seasonally adjusted estimates account for regularly seen economic patterns, with the following estimates not seasonally adjusted.

In the three Metropolitan Statistical Areas (MSA), the unemployment rates were 6.2 percent in the Las Vegas area, 5 percent in Reno, and 5.4 percent in the Carson area in June 2024.

In Nevada's counties, the lowest unemployment rate was in White Pine County at 4.1 percent, and Nye County had the highest rate at 7.4 percent. For a look at the unemployment rate in your county, visit our [Area Profiles Page](#).

For the latest information on the Nevada economy including employment, unemployment, and unemployment insurance check out our monthly [Labor Market Overview](#), or to see the data on your area, take a look at our monthly [Local Area Labor Market Overview](#).

Additional information on unemployment estimates along with a complete breakout of unemployment in counties, cities, and other areas in Nevada can be found by visiting our [Local Area Unemployment Statistics](#) page. Additionally, employment estimates by industry can be found at our [Current Employment Statistics](#) page.

—###—

ABOUT THE RESEARCH AND ANALYSIS BUREAU:

The [Research and Analysis Bureau](#) is Nevada's premier source for labor market information. A part of DETR, the Bureau is responsible for creating, analyzing, and reporting Nevada's labor market information, in cooperation with the United States Bureau of Labor Statistics (BLS).

500 East Third Street, Room 200 • Carson City, NV 89713 • (775) 684-3911 • Fax (775) 684-3908
2800 E. St. Louis Avenue • Las Vegas, Nevada 89104 • (702) 486-7923
detr.nv.gov

MEDIA CONTACT
VALENTINA
BONAPARTE
detrmedia@detr.nv.gov



JOE LOMBARDO
GOVERNOR
CHRISTOPHER SEWELL
DIRECTOR
DAVID SCHMIDT
CHIEF ECONOMIST

Counties and Cities Employment & Unemployment

June 2024

Published on July 23, 2024

In June 2024, the seasonally adjusted unemployment rate in Nevada increased by 0.1 percentage points from 5.1 percent to 5.2 percent. The unadjusted rate went up by 0.6 percentage points from 5.4 percent to 6 percent. The number of employed individuals in the state decreased by 300.

At the MSA (Metropolitan Statistical Area) level, the state saw an increase in unemployment rate in all three of its MSAs. In the Las Vegas - Paradise MSA, the state saw an increase of unemployment rate equivalent to 0.6 percentage point, moving from 5.6 percent to 6.2 percent. The Carson City MSA also saw an increase of 0.6 percentage point, going from 4.8 percent to 5.4 percent. The Reno - Sparks MSA saw an increase of 0.5 percentage point, going from 4.5 percent to 5 percent. These figures are not adjusted for seasonality.

At the county level, the state saw increases in unemployment rate in all its counties. The largest increases were seen in Eureka county, Lincoln County, and Pershing County. Eureka saw an increase of 1.9 percentage points, moving from 5 percent to 6.9 percent. Both Lincoln and Pershing saw increases of 0.8 percentage points, with Lincoln moving from 5.1 percent to 5.9 and Pershing moving from 5.3 percent to 6.1 percent.

Figures for state unemployment estimates come from the Local Area Unemployment Statistics (LAUS) program, a state/federal partnership sponsored by the Bureau of Labor Statistics (BLS-LAUS). This program produces monthly and annual employment, unemployment, and labor force data for census regions, states, counties, metropolitan areas, and many large cities, based on place of residence. For more on LAUS data or for a look at estimates in your area visit our [LAUS Page](#), and for a look that the economic profile of Nevada, the metropolitan areas, or your county visit our [Area Profiles](#) Page.

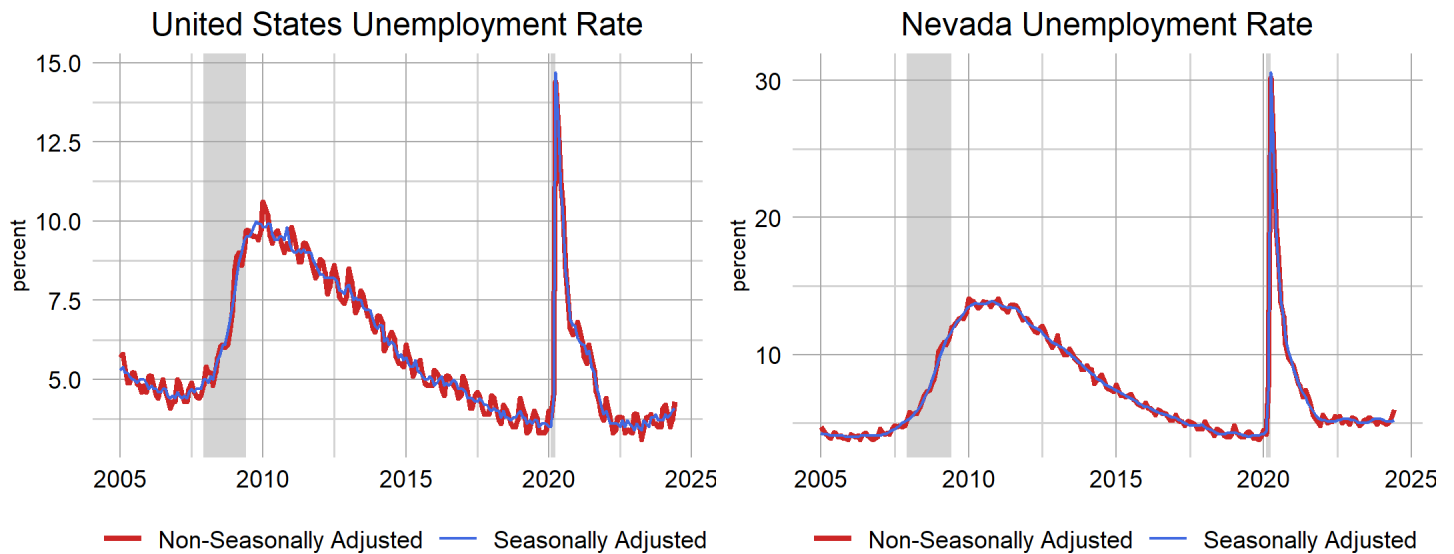
U.S. & Nevada Local Area Unemployment Statistics

Area	Labor Force	Employed	Unemployed	Unemployment Rate	Labor Force Participation Rate	Employment Population Ratio
US						
U.S.	169,007,000	161,774,000	7,233,000	4.3	63.0	60.3
U.S. SA	168,009,000	161,199,000	6,811,000	4.1	62.6	60.1
State						
Nevada	1,620,334	1,523,737	96,597	6.0	62.8	59.0
Nevada SA	1,617,818	1,533,142	84,676	5.2	62.7	59.4

SA denotes seasonally adjusted data

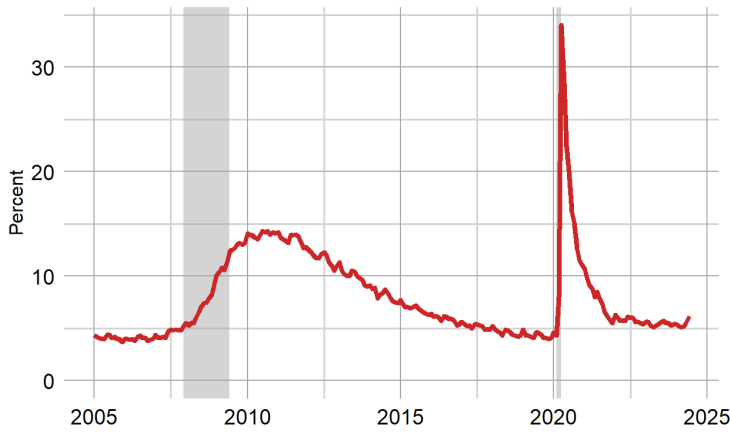
Seasonally adjusted estimates account for regularly seen seasonal employment patterns such as jobs associated with holiday hiring, holiday and weather seasons, or other jobs with seasonal components. The result of a seasonally adjusted estimate is usually a smoother estimate from which underlying economic trends can be seen. Adjusted estimates are in the summary table above, and in many of the other tables and figures throughout this document.

Nevada’s seasonally adjusted unemployment rate was 5.2 percent in June, which increased by 0.1 percentage points from 5.1 percent in May, and increased by 0.2 percentage point from 5 percent in 2023. The number of unemployed individuals increased by 1,906 from May for a current level of 84,676 people, which increased by 5,260 unemployed people since 2023. The labor force in Nevada is currently 1,617,818 people, which has increased by 1,606 people from May, and increased by 17,160 people since 2023.



The Las Vegas Metropolitan Statistical Area’s (MSA)s unemployment rate was 6.2 percent in June 2024, increasing from 5.6 percent in May 2024, and up from 5.4 percent in June 2023, non-seasonally adjusted. The number of unemployed individuals increase by 7,699 since May 2024 for a current level of 74,623 people, which is 10,273 more unemployed people than June 2023. The labor force in Las Vegas is currently 1,201,846 people, which is 912 less people than May 2024, and is up 20,338 people since June 2023.

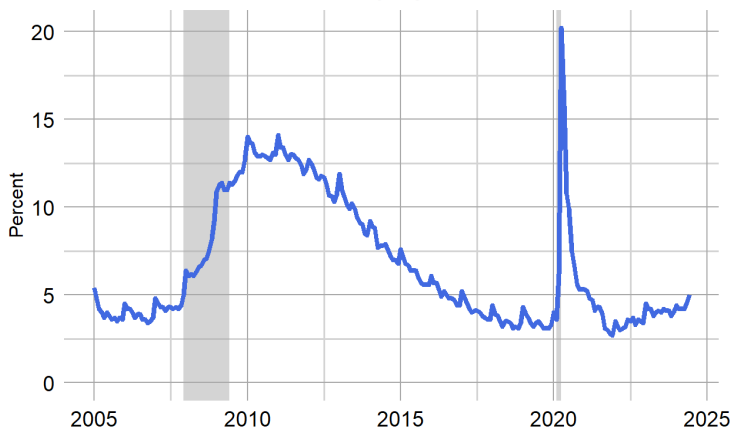
Las Vegas Unemployment Rate



Las Vegas LAUS Summary	
Unemployment Rate	
Unemployment Rate	6.2
Previous Month	5.6
Previous Year	5.4
Maximum Rate	34
Unemployed Individuals	
Unemployment Level	74,623
Monthly Change	7,699
Annual Change	10,273
Maximum Level	369,106

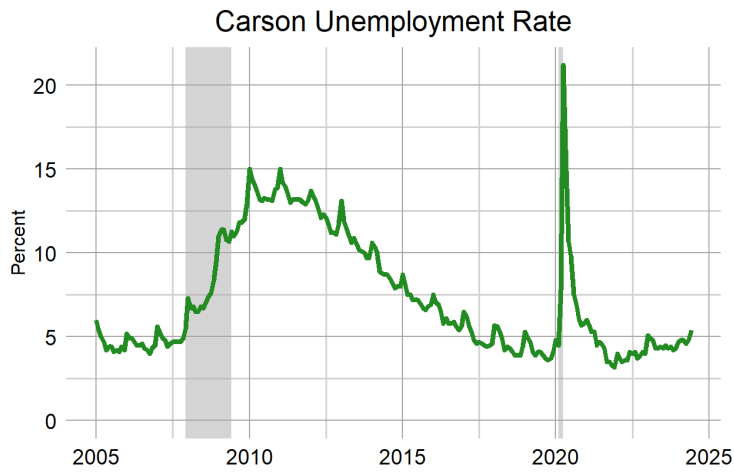
The Reno MSA’s unemployment rate was 5 percent in June 2024, increasing from 4.5 percent in May 2024, and up from 4.1 percent in June 2023, non-seasonally adjusted. The number of unemployed individuals increase by 1,339 since May 2024 for a current level of 13,356 people, which is 2,525 more unemployed people than June 2023. The labor force in Reno is currently 267,621 people, which is 905 more people than May 2024, and is up 2,715 people since June 2023.

Reno Unemployment Rate



Reno LAUS Summary	
Unemployment Rate	
Unemployment Rate	5
Previous Month	4.5
Previous Year	4.1
Maximum Rate	20.2
Unemployed Individuals	
Unemployment Level	13,356
Monthly Change	1,339
Annual Change	2,525
Maximum Level	47,792

The Carson City MSA’s unemployment rate was 5.4 percent in June 2024, increasing from 4.8 percent in May 2024, and up from 4.4 percent in June 2023, non-seasonally adjusted. The number of unemployed individuals increase by 147 since May 2024 for a current level of 1,411 people, which is 266 more unemployed people than June 2023. The labor force in Carson City is currently 26,357 people, which is 201 more people than May 2024, and is up 172 people since June 2023.



Carson City LAUS Summary	
Unemployment Rate	
Unemployment Rate	5.4
Previous Month	4.8
Previous Year	4.4
Maximum Rate	21.2
Unemployed Individuals	
Unemployment Level	1,411
Monthly Change	147
Annual Change	266
Maximum Level	5,191

For more on the economy of your county including unemployment, employment, unemployment insurance, wages, and more visit our [Area Profiles Page](#).

Unemployment Insurance Benefits

In June 2024, 11,663 initial claims for unemployment insurance were filed in Nevada, an increase of 739 claims, or 6.8 percent, from May 2024 when there were 10,924 claims. This figure is an increase from the 9,732 figure that was observed in June of 2023.

June 2024 Unemployment Insurance Activity

Measure	June 2024	June 2023	% change	May 2024	% change	12 month average
Initial Claims	11,663	9,732	19.8%	10,924	6.8%	10,982
Weeks Claimed	103,266	75,226	37.3%	88,763	16.3%	94,993
Weeks Compensated	79,036	70,564	12.0%	79,325	-0.4%	85,420
Amount Compensated	\$36,077,109	\$29,034,668	24.3%	\$36,735,060	-1.8%	\$38,811,389
Weeks Compensated Total Unemployment	72,750	63,723	14.2%	72,886	-0.2%	78,198
Amount Compensated Total Unemployment	\$34,402,413	\$27,461,428	25.3%	\$35,010,756	-1.7%	\$36,886,900
First Payments	4,740	5,328	-11.0%	4,749	-0.2%	5,412
Final Payments (Exhaustions)	2,106	1,378	52.8%	2,016	4.5%	1,996
Average Weekly Benefit	\$472.89	\$430.95	9.7%	\$480.35	-1.6%	\$470.75
Average Duration (in weeks)	14.45	11.65	24.0%	14.18	1.9%	12.98
Exhaustion Rate	37.20%	32.61%	14.1%	36.20%	2.7%	34.33%

Source: ETA 5159

Looking to our measures of unemployment insurance activity, final payments were up across the state. First payments saw a slight increase over the month. In Clark County, for example, first payments increased by 62 up to 3,767 or an increase of 1.7 percent. Final payments increased by 71 up to 1,714 or a percentage increase of 4.3 percent. Washoe County saw a decrease in first payments, with first payments going down by 69 from 622 to 553. Final payments in Washoe County were up by 4 from 204 to 208. Carson City experienced a decrease in first payments moving from 55 to 40 or a decrease of 15. Final payments in Carson City were down 6, moving from 32 to 26. Statewide, the Weeks Compensated increased by 144 or 0.2 percent over the month. Benefit Payments made decreased by approximately \$543,143 or 1.5%.

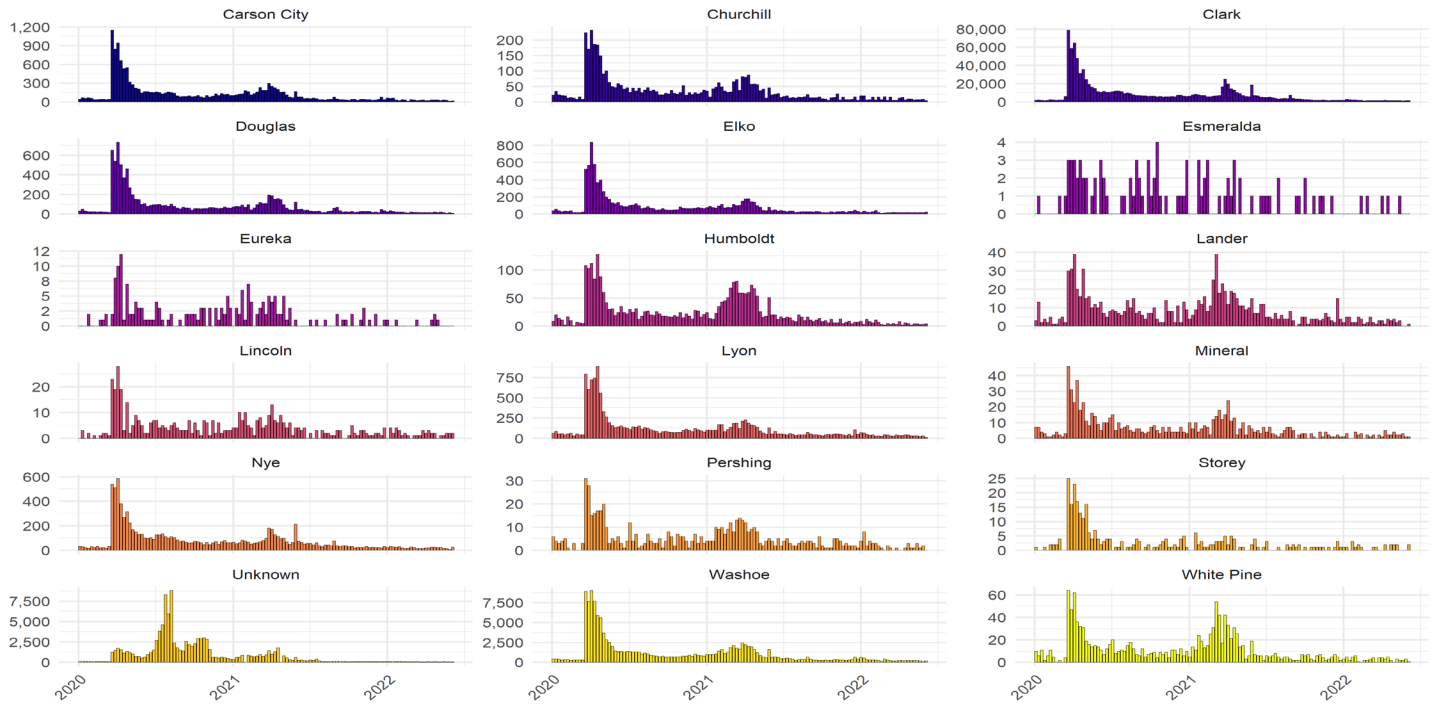
UI Claims Activity by County

June 2024

County	First Payments	Final Payments	Weeks Compensated	Benefit Payments	Average Weekly Benefit	
Carson City	40	26	831	\$372,494	\$448.25	
Churchill	22	3	289	\$132,445	\$458.29	
Clark	3,767	1,714	61,824	\$28,000,347	\$452.90	
Douglas	23	17	500	\$239,463	\$478.93	
Elko	35	8	422	\$210,349	\$498.46	
Esmeralda	0	0	12	\$6,208	\$517.33	
Eureka	3	0	46	\$23,495	\$510.76	
Humboldt	14	2	191	\$96,784	\$506.72	
Lander	4	0	74	\$40,497	\$547.26	
Lincoln	1	0	27	\$13,330	\$493.70	
Lyon	83	24	1,044	\$517,925	\$496.10	
Mineral	5	4	63	\$28,101	\$446.05	
Nye	43	33	841	\$375,130	\$446.05	
Pershing	2	2	28	\$10,868	\$388.14	
Storey	1	0	12	\$5,686	\$473.83	
Unknown	118	93	2,266	\$1,151,826	\$508.31	
Washoe	553	208	8,943	\$4,281,644	\$478.77	
White Pine	4	3	68	\$28,932	\$425.47	
Statewide	—	4,718	2,137	77,481	35,535,524	—

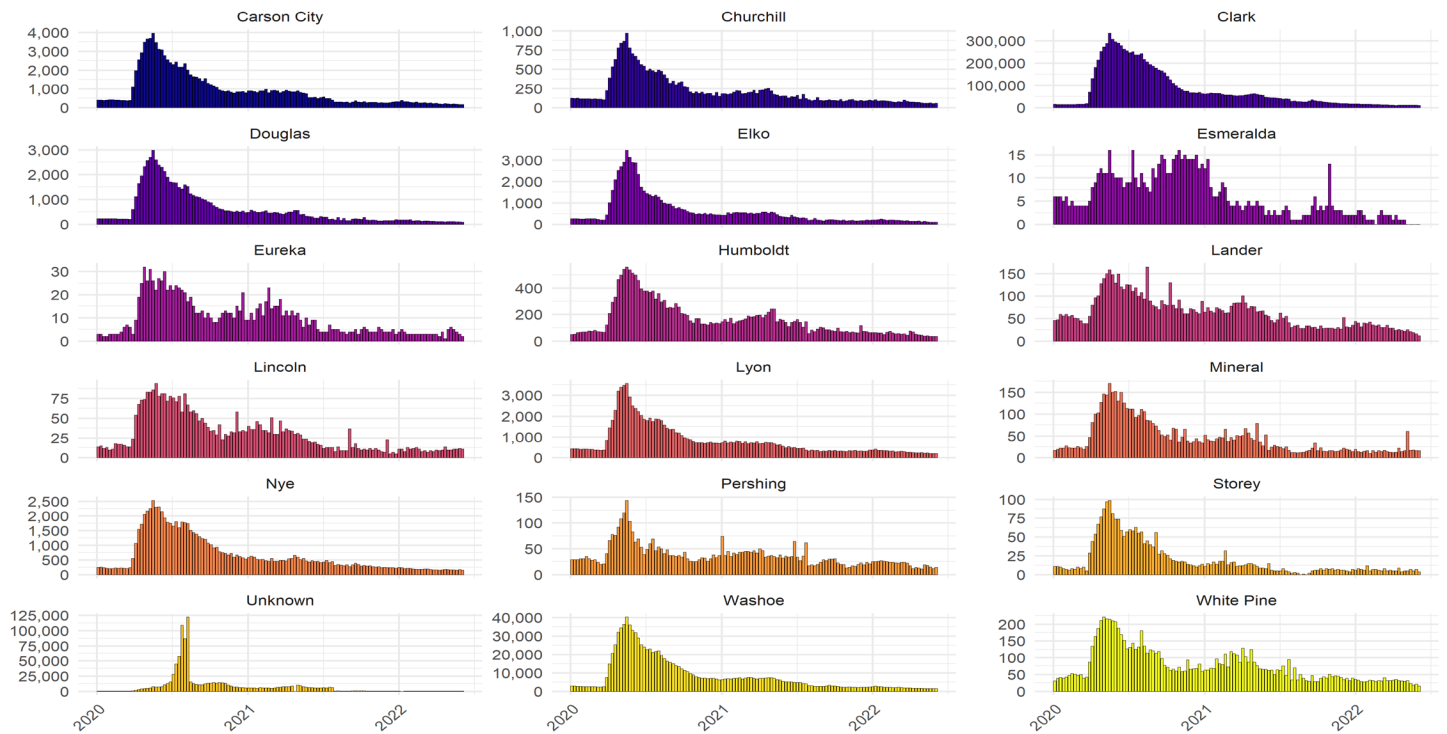
Source: DETR Internal Reporting

Initial Claims by County
weekly claim totals since January 2020



Source: DETR Internal Reporting

Continued Claims by County
weekly claim totals since January 2020



Source: DETR Internal Reporting
Figure 11

Local Area Unemployment Statistics

Area		Labor Force	Employed	Unemployed	Unemployment Rate
US					
U.S.	SA	168,009,000	161,199,000	6,811,000	4.1
U.S.		169,007,000	161,774,000	7,233,000	4.3
State					
Nevada	SA	1,617,818	1,533,142	84,676	5.2
Nevada		1,620,334	1,523,737	96,597	6.0
Metropolitan Statistical Area					
Reno - Sparks MSA		267,621	254,265	13,356	5.0
Carson City MSA		26,357	24,946	1,411	5.4
Las Vegas - Paradise MSA		1,201,846	1,127,223	74,623	6.2
Combined Statistical Area					
Reno-Carson City-Fernley, Nv Combined Statistical Area		340,500	322,893	17,607	5.2
County					
White Pine County		4,665	4,473	192	4.1
Lander County		3,151	3,016	135	4.3
Elko County		25,913	24,685	1,228	4.7
Washoe County		265,454	252,211	13,243	5.0
Humboldt County		7,415	7,026	389	5.2
Storey County		2,167	2,054	113	5.2
Douglas County		22,915	21,693	1,222	5.3
Churchill County		10,900	10,313	587	5.4
Carson City		26,357	24,946	1,411	5.4
Esmeralda County		411	388	23	5.6
Lincoln County		1,951	1,836	115	5.9
Pershing County		2,229	2,094	135	6.1
Clark County		1,201,846	1,127,223	74,623	6.2
Eureka County		842	784	58	6.9
Lyon County		23,607	21,989	1,618	6.9
Mineral County		1,555	1,448	107	6.9
Nye County		18,953	17,557	1,396	7.4
Labor Market Area					
Elko Micropolitan Area		26,755	25,469	1,286	4.8
Winnemucca Micropolitan Area		7,415	7,026	389	5.2
Gardnerville Micropolitan Area		22,915	21,693	1,222	5.3
Fallon Micropolitan Area		10,900	10,313	587	5.4
Fernley Micropolitan Area		23,607	21,989	1,618	6.9
Pahrump Micropolitan Area		18,953	17,557	1,396	7.4
City					
Elko City*		10,118	9,627	491	4.9
Sparks		59,668	56,666	3,002	5.0
Reno		144,477	137,179	7,298	5.1
Mesquite*		8,693	8,218	475	5.5
Boulder City*		7,933	7,469	464	5.8
Henderson		177,133	166,761	10,372	5.9
Las Vegas		331,354	310,409	20,945	6.3
Fernley City*		8,913	8,283	630	7.1
North Las Vegas		125,729	116,391	9,338	7.4

*State Specific Areas, not endorsed or published by the BLS

SA denotes seasonally adjusted data

The cities of Boulder City, Elko, Fernley, and Mesquite are state specific areas. These estimates are not endorsed or published by the BLS.

Unemployment Rate Summary LAUS

Area		June 2024	May 2024	Monthly Change	June 2023	Yearly Change
US						
U.S.	SA	4.1	4.0	0.1	3.6	0.5
U.S.		4.3	3.7	0.6	3.8	0.5
State						
Nevada	SA	5.2	5.1	0.1	5.0	0.2
Nevada		6.0	5.4	0.6	5.2	0.8
Metropolitan Statistical Area						
Reno - Sparks MSA		5.0	4.5	0.5	4.1	0.9
Carson City MSA		5.4	4.8	0.6	4.4	1.0
Las Vegas - Paradise MSA		6.2	5.6	0.6	5.4	0.8
Combined Statistical Area						
Reno-Carson City-Fernley, Nv Combined Statistical Area		5.2	4.7	0.5	4.2	1.0
County						
White Pine County		4.1	3.8	0.3	3.3	0.8
Lander County		4.3	3.7	0.6	3.8	0.5
Elko County		4.7	4.1	0.6	4.1	0.6
Washoe County		5.0	4.5	0.5	4.1	0.9
Humboldt County		5.2	4.6	0.6	4.1	1.1
Storey County		5.2	4.8	0.4	4.3	0.9
Douglas County		5.3	4.9	0.4	4.3	1.0
Churchill County		5.4	4.7	0.7	4.5	0.9
Carson City		5.4	4.8	0.6	4.4	1.0
Esmeralda County		5.6	5.4	0.2	3.9	1.7
Lincoln County		5.9	5.1	0.8	5.0	0.9
Pershing County		6.1	5.3	0.8	4.6	1.5
Clark County		6.2	5.6	0.6	5.4	0.8
Eureka County		6.9	5.0	1.9	4.0	2.9
Lyon County		6.9	6.3	0.6	5.7	1.2
Mineral County		6.9	6.5	0.4	7.0	-0.1
Nye County		7.4	6.8	0.6	6.5	0.9
Labor Market Area						
Elko Micropolitan Area		4.8	4.1	0.7	4.1	0.7
Winnemucca Micropolitan Area		5.2	4.6	0.6	4.1	1.1
Gardnerville Micropolitan Area		5.3	4.9	0.4	4.3	1.0
Fallon Micropolitan Area		5.4	4.7	0.7	4.5	0.9
Fernley Micropolitan Area		6.9	6.3	0.6	5.7	1.2
Pahrump Micropolitan Area		7.4	6.8	0.6	6.5	0.9
City						
Elko City*		4.9	4.2	0.7	4.2	0.7
Sparks		5.0	4.5	0.5	3.9	1.1
Reno		5.1	4.6	0.5	4.2	0.9
Mesquite*		5.5	5.0	0.5	4.5	1.0
Boulder City*		5.8	5.3	0.5	5.2	0.6
Henderson		5.9	5.2	0.7	4.9	1.0
Las Vegas		6.3	5.6	0.7	5.6	0.7
Fernley City*		7.1	6.6	0.5	5.8	1.3
North Las Vegas		7.4	6.6	0.8	6.4	1.0

* State Specific Areas, not endorsed or published by the BLS

SA denotes seasonally adjusted data

Labor Force Levels Summary LAUS

Area	June 2024	May 2024	Monthly Change	June 2023	Yearly Change
US					
U.S.	169,007,000	167,576,000	1,431,000	167,910,000	1,097,000
U.S. SA	168,009,000	167,732,000	277,000	166,951,000	1,058,000
State					
Nevada	1,620,334	1,619,558	776	1,596,981	23,353
Nevada SA	1,617,818	1,616,212	1,606	1,600,658	17,160
Metropolitan Statistical Area					
Carson City MSA	26,357	26,156	201	26,185	172
Las Vegas - Paradise MSA	1,201,846	1,202,758	-912	1,181,508	20,338
Reno - Sparks MSA	267,621	266,716	905	264,906	2,715
Combined Statistical Area					
Reno-Carson City-Fernley, Nv Combined Statistical Area	340,500	338,942	1,558	337,721	2,779
County					
Churchill County	10,900	10,955	-55	11,008	-108
Clark County	1,201,846	1,202,758	-912	1,181,508	20,338
Douglas County	22,915	22,553	362	22,776	139
Elko County	25,913	25,753	160	26,093	-180
Esmeralda County	411	448	-37	438	-27
Eureka County	842	892	-50	909	-67
Humboldt County	7,415	7,488	-73	7,618	-203
Lander County	3,151	3,120	31	3,169	-18
Lincoln County	1,951	1,960	-9	1,983	-32
Lyon County	23,607	23,517	90	23,854	-247
Mineral County	1,555	1,534	21	1,468	87
Nye County	18,953	18,844	109	18,202	751
Pershing County	2,229	2,273	-44	2,288	-59
Storey County	2,167	2,162	5	2,140	27
Washoe County	265,454	264,554	900	262,766	2,688
White Pine County	4,665	4,591	74	4,575	90
Carson City	26,357	26,156	201	26,185	172
Labor Market Area					
Elko Micropolitan Area	26,755	26,645	110	27,002	-247
Fallon Micropolitan Area	10,900	10,955	-55	11,008	-108
Fernley Micropolitan Area	23,607	23,517	90	23,854	-247
Gardnerville Micropolitan Area	22,915	22,553	362	22,776	139
Pahrump Micropolitan Area	18,953	18,844	109	18,202	751
Winnemucca Micropolitan Area	7,415	7,488	-73	7,618	-203
City					
Fernley City*	8,913	8,892	21	8,999	-86
Boulder City*	7,933	7,949	-16	7,809	124
Elko City*	10,118	10,054	64	10,188	-70
Henderson	177,133	177,336	-203	173,867	3,266
Las Vegas	331,354	331,499	-145	325,934	5,420
Mesquite*	8,693	8,715	-22	8,525	168
North Las Vegas	125,729	125,531	198	123,239	2,490
Reno	144,477	144,027	450	143,090	1,387
Sparks	59,668	59,464	204	58,938	730

* State Specific Areas, not endorsed or published by the BLS

SA denotes seasonally adjusted data

Employed Individuals Levels Summary LAUS

Area	June 2024	May 2024	Monthly Change	June 2023	Yearly Change
US					
U.S.	161,774,000	161,341,000	433,000	161,559,000	215,000
U.S. SA	161,199,000	161,083,000	116,000	160,994,000	205,000
State					
Nevada	1,523,737	1,532,887	-9,150	1,514,621	9,116
Nevada SA	1,533,142	1,533,442	-300	1,521,242	11,900
Metropolitan Statistical Area					
Carson City MSA	24,946	24,892	54	25,040	-94
Las Vegas - Paradise MSA	1,127,223	1,135,834	-8,611	1,117,158	10,065
Reno - Sparks MSA	254,265	254,699	-434	254,075	190
Combined Statistical Area					
Reno-Carson City-Fernley, Nv Combined Statistical Area	322,893	323,072	-179	323,414	-521
County					
Churchill County	10,313	10,444	-131	10,509	-196
Clark County	1,127,223	1,135,834	-8,611	1,117,158	10,065
Douglas County	21,693	21,442	251	21,793	-100
Elko County	24,685	24,697	-12	25,016	-331
Esmeralda County	388	424	-36	421	-33
Eureka County	784	847	-63	873	-89
Humboldt County	7,026	7,144	-118	7,302	-276
Lander County	3,016	3,004	12	3,050	-34
Lincoln County	1,836	1,860	-24	1,884	-48
Lyon County	21,989	22,039	-50	22,506	-517
Mineral County	1,448	1,434	14	1,365	83
Nye County	17,557	17,557	0	17,023	534
Pershing County	2,094	2,152	-58	2,182	-88
Storey County	2,054	2,058	-4	2,049	5
Washoe County	252,211	252,641	-430	252,026	185
White Pine County	4,473	4,418	55	4,424	49
Carson City	24,946	24,892	54	25,040	-94
Labor Market Area					
Elko Micropolitan Area	25,469	25,544	-75	25,889	-420
Fallon Micropolitan Area	10,313	10,444	-131	10,509	-196
Fernley Micropolitan Area	21,989	22,039	-50	22,506	-517
Gardnerville Micropolitan Area	21,693	21,442	251	21,793	-100
Pahrump Micropolitan Area	17,557	17,557	0	17,023	534
Winnemucca Micropolitan Area	7,026	7,144	-118	7,302	-276
City					
Fernley City*	8,283	8,301	-18	8,477	-194
Boulder City*	7,469	7,526	-57	7,402	67
Elko City*	9,627	9,632	-5	9,756	-129
Henderson	166,761	168,035	-1,274	165,272	1,489
Las Vegas	310,409	312,780	-2,371	307,638	2,771
Mesquite*	8,218	8,281	-63	8,145	73
North Las Vegas	116,391	117,280	-889	115,352	1,039
Reno	137,179	137,413	-234	137,078	101
Sparks	56,666	56,762	-96	56,624	42

* State Specific Areas, not endorsed or published by the BLS

SA denotes seasonally adjusted data

Unemployed Individuals Levels Summary LAUS

Area	June 2024	May 2024	Monthly Change	June 2023	Yearly Change
US					
U.S.	7,233,000	6,235,000	998,000	6,351,000	882,000
U.S. SA	6,811,000	6,649,000	162,000	5,957,000	854,000
State					
Nevada	96,597	86,671	9,926	82,360	14,237
Nevada SA	84,676	82,770	1,906	79,416	5,260
Metropolitan Statistical Area					
Carson City MSA	1,411	1,264	147	1,145	266
Las Vegas - Paradise MSA	74,623	66,924	7,699	64,350	10,273
Reno - Sparks MSA	13,356	12,017	1,339	10,831	2,525
Combined Statistical Area					
Reno-Carson City-Fernley, Nv Combined Statistical Area	17,607	15,870	1,737	14,307	3,300
County					
Churchill County	587	511	76	499	88
Clark County	74,623	66,924	7,699	64,350	10,273
Douglas County	1,222	1,111	111	983	239
Elko County	1,228	1,056	172	1,077	151
Esmeralda County	23	24	-1	17	6
Eureka County	58	45	13	36	22
Humboldt County	389	344	45	316	73
Lander County	135	116	19	119	16
Lincoln County	115	100	15	99	16
Lyon County	1,618	1,478	140	1,348	270
Mineral County	107	100	7	103	4
Nye County	1,396	1,287	109	1,179	217
Pershing County	135	121	14	106	29
Storey County	113	104	9	91	22
Washoe County	13,243	11,913	1,330	10,740	2,503
White Pine County	192	173	19	151	41
Carson City	1,411	1,264	147	1,145	266
Labor Market Area					
Elko Micropolitan Area	1,286	1,101	185	1,113	173
Fallon Micropolitan Area	587	511	76	499	88
Fernley Micropolitan Area	1,618	1,478	140	1,348	270
Gardnerville Micropolitan Area	1,222	1,111	111	983	239
Pahrump Micropolitan Area	1,396	1,287	109	1,179	217
Winnemucca Micropolitan Area	389	344	45	316	73
City					
Fernley City*	630	591	39	522	108
Boulder City*	464	423	41	407	57
Elko City*	491	422	69	432	59
Henderson	10,372	9,301	1,071	8,595	1,777
Las Vegas	20,945	18,719	2,226	18,296	2,649
Mesquite*	475	434	41	380	95
North Las Vegas	9,338	8,251	1,087	7,887	1,451
Reno	7,298	6,614	684	6,012	1,286
Sparks	3,002	2,702	300	2,314	688

* State Specific Areas, not endorsed or published by the BLS

SA denotes seasonally adjusted data

End Notes

Prepared by the Research and Analysis Bureau with contributions from: Jordan Ambrose, Benjamin Albrecht, Bharman Gulati, Marianne Kattenhorn, Dionny McDonnell, Dave Schmidt, Antonio Solorio, and Tim Wilcox.

Special thanks to all the R and RStudio developers that built the packages to make this possible. Packages used in this report include tidyverse, DBI, tidyquant, data.table, scales, gt, kableExtra, ggthemes, cowplot, gridExtra, RcppRoll, viridis, fiftystater, ggforce, knitr, flexdashboard, lubridate, plotly, patchwork, reshape2.

This workforce product was funded by the Workforce Information Grant awarded by the U.S. Department of Labor's Employment and Training Administration. The product was created by the recipient and does not necessarily reflect the official position of the U.S. Department of Labor. The U.S. Department of Labor makes no guarantees, warranties, or assurances of any kind, express or implied, with respect to such information, including any information on linked sites and including, but not limited to, accuracy of the information or its completeness, timeliness, usefulness, adequacy, continued availability, or ownership. This product is copyrighted by the institution that created it. Internal use by an organization and/or personal use by an individual for non-commercial purposes is permissible. All other uses require the prior authorization of the copyright owner.