

# The Garfield Dollhouse Kit



No. 8010

## ASSEMBLY INSTRUCTIONS

• Note: Save the kit box photo for reference during assembly; additional photos on schematics

Welcome to the exciting world of miniatures! Enjoy building your Garfield dollhouse kit and look forward to a fascinating and rewarding hobby that you and your family can enjoy now and for generations to come.

Before you begin building, read the instructions carefully. Pay particular attention to the "Warm-Up Sheet". It will give you many important tips and should help you to "get off on the right foot"! Before beginning, check to see that you have everything you need.

### THIS KIT CONTAINS:

- 39 pre-cut wood sheets
- 4 silkscreened plastic window sheets
- Sandpaper
- Instructions
- Schematic diagrams

### You'll also need:

- A soft lead pencil with an eraser.
  - Glue. We strongly recommend a hot melt glue gun and glue sticks (available in most craft, hardware, or miniatures shops). A glue gun will save you considerable time, but if you prefer, it is possible to use any household glue which is suitable for bonding wood. We suggest that you have on hand white or clear household glue for affixing the windows because the glue gun can melt the acetate.
  - Masking tape, empty cans or containers. The "warm-up sheet" explains how to use tape for applying shingles, and the containers will help keep things organized as you go.
  - Extra sandpaper.
  - A ruler
- For putting a finish on your house you will need:**
- Wood fill
  - A fifty-fifty combination of clear shellac and wood alcohol. If you paint your house, you'll require less paint to cover, and sealing helps prevent warping. If you don't paint your house, the seal will keep the wood from drying out. **Do not seal the wood** if you plan to stain it as the stain won't take.
  - Paint, stain, and miniature wallpaper if you choose to finish your house.
  - An exacto or other sharp knife. If you have them, pruning shears work great for cutting shingles and siding!

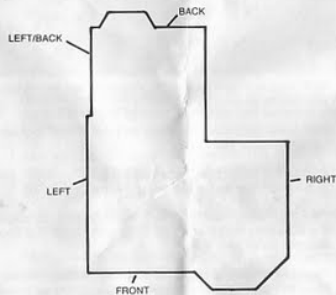
### 10 KEYS TO SUCCESSFUL ASSEMBLY OF YOUR GARFIELD DOLLHOUSE

1. Set up a comfortable work area with all supplies handy. A table or smooth surface at least 36" by 48" would be great.
2. Carefully follow the instructions in order. Don't jump ahead of yourself! Complete one step before going on to the next.
3. Keep all the wood sheets together in the kit box until they are asked for in the instructions. Return them to the box after needed parts are removed.
4. Don't remove any wood pieces from the sheets until instructed to do so. When you do punch out the parts, do so CAREFULLY or you may break a part. You will have a hard time figuring out what is what if you have lots of loose pieces around!
5. Follow the schematic diagrams. It will be helpful to lightly write the name of each part in pencil directly on the wood pieces and sheet. This can easily be erased later on.
6. When you see the words REMOVE AND CAREFULLY PREPARE in the instructions it means: "Punch the piece out CAREFULLY from the front to the back. (The front is the side of the wood where the cut marks are clearly visible.) Sand all edges lightly and paint, wallpaper, stain, or otherwise decorate, if desired.
7. ALWAYS work with the smooth finished front side of the wood (the side where the cut marks are visible) facing up or towards the outside of the house unless directed otherwise.
8. Don't glue until instructed to do so! This will give you flexibility in working with the parts. Always check the fit of the pieces before applying the glue.
9. If you plan to paint the trim a different color than the rest of the house, paint the house and the parts separately and glue the trim to the house LAST! Again, read the "Warm-up Sheet" before you begin building!! It will give you many important suggestions for wallpapering, painting, electrifying, shingling, and siding your dollhouse.
10. ENJOY yourself. Building a dollhouse the size of the Garfield is not something that you can complete in a few hours, but it is a craft project of which you will be proud!

### Before you begin...

#### Note the following abbreviations:

R and P means "remove and prepare" (#6 in 10 Keys).  
 The numbers in parentheses throughout the instructions refer to the sheet number.  
 (G) means permanently glue.  
 "Face up" means good side of the wood facing up (Key #7).  
 "Square" means align two pieces of wood at a 90 degree angle to each other.  
**A word of warning!** The Garfield is a very large house (when fully assembled it is 30½" wide on its narrowest side.) Be sure that you will be able to get it out of the room in which you assemble it!

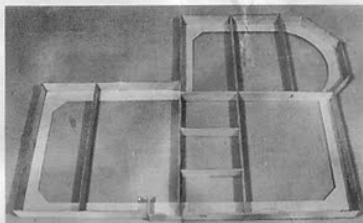


One last point, be sure to read the "10 keys to successful assembly" before you begin.

## A. FOUNDATION

(Note: Assemble foundation/first floor unit carefully. Keep it as flat as possible.)

1. R&P two pieces of foundation base (1,2). Mark in pencil on each the circled numbers shown on schematic drawings. Lay both pieces face up on flat work surface, butt "A" ends and "B" ends together and glue.



2. R&P all foundation parts 1 thru 18 (1,2). Number each with pencil. Beginning with #13, 1, 2, 3, etc., fit tabs of each to their respective notches along outside edge of the foundation base. (Note: Do this carefully, be sure to keep foundation sitting flat on work surface.)
3. R&P kitchen porch step parts (11). At the step notch in foundation #13, flush with back end of notch, align one square step end square to #13. Glue to #13 and foundation base. Repeat with second square step end at front end of notch. Laminate to back of this square the notched step end piece so that narrowest side butts against #13. (G). Align riser against vertical of step end, and notch in foundation #6. (G). Align step. (G).
4. R&P front and back sections of first floor (3,6). Lay upside down on flat work surface, butt common edges (see notes on Schematic Drawings) but do not glue.



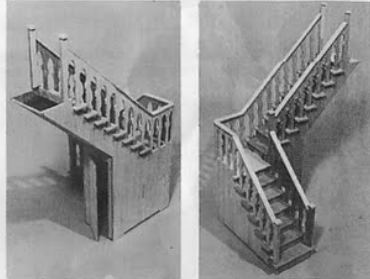
5. Lay preassembled foundation/first floor unit upside down on first floor sections, align tabs with slots and notches in first floor. (G)
6. Glue first floor gussets A, B, & C (2) along joint between two first floor sections.
7. Turn assembled foundation/first floor unit upside right and sand flat with sanding block.

## B. STAIRCASES

(Note: There are two staircase assemblies, first floor on sheets (20,21), second floor on (22).)

### FIRST FLOOR STAIRCASE

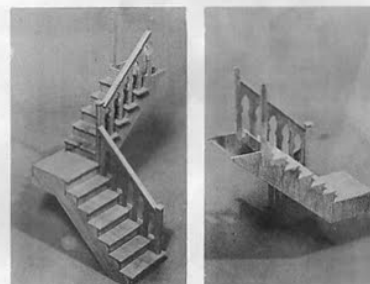
1. R&P staircase sides 1A, 1B, 1C, 1D, (20,21).



2. Interlock 1C and 1D. (Note: Be sure you do this in the correct direction so staircase will turn right as it rises. (See photo).
3. Fit staircase side 1B to tab on 1C. (G)
4. R&P first floor landing (20). Align tab on landing with slot in 1C. (G) to 1C only.
5. Align 1A with notch in 1B, tab on 1D. (G). Be sure landing fits snug and square, finish gluing assembly.
6. R&P all risers (21). Starting with bottom step, glue risers between staircase sides. (Note: top riser is narrower; glue even with bottom of notch).
7. R&P all steps (21). Begin with bottom step and work up. Align carefully & glue. (Note: Step #7 just above landing is different.) (Also note: Primary concern when aligning steps is top surface).
8. R&P staircase closet and staircase backside (20). Glue closet wall between 1B and 1D. (Note: Make the bottom of the closet door wall flush with bottom edge of staircase, not bottom of tabl)
9. R&P all bannister parts (20). Each is labeled to correspond to staircase side on which it is to be glued. Piece #1b with notch fits upper section of side 1B. Align with notched section flush with outer surface of 1B. (This allows it to fit flush against second floor wall.) Also be sure lower 1B bannister is aligned with angled corner at joint of 1B and 1A. Glue all bannister parts.
10. R&P five pieces of post trim (20). Glue one piece on inside of lower three corner posts to double thickness. (Don't glue trim on top posts until installed in house.)
11. R&P post caps, glue one to the top of lower three corner posts. Remainder are for second staircase and railings.

### SECOND FLOOR STAIRCASE

1. R&P staircase sides 2A, 2B, 2C, 2D (22).

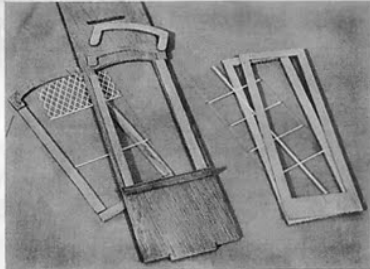


2. Interlock 2C and 2D (Note: Be sure you do this in the correct direction so staircase will turn right as it rises. See photo.) (G)
3. Fit 2B to tab on 2C, and 2A to tabs on 2D and 2B. (G)
4. R&P second floor landing/bottomside (22). Fit inside stair side pieces, flush with bottom edges and glue.
5. R&P second floor landing (22). Insert tab into slot in 2C, glue.
6. R&P all risers (22). Glue risers between staircase sides starting with the first riser which is narrower than the others. (Note: Glue top riser flush with bottom of step notch in side 2B. (This leaves space for third floor.)

- R&P all steps (22). All steps are same except **first and eighth** (including landing). Glue steps in place starting from bottom step and working up.
- R&P upper and lower staircase backing (22). Glue lower piece between staircase sides 2A & 2C flush with edges of sides. Align upper piece between 2B & 2D flush with edges of sides and glue.
- R&P upper & lower bannisters (22). Center on tops of 2C & 2D and glue.
- R&P three post trim pieces (22). Glue two shorter to bottom and middle posts, **put long one aside** until installation of staircase in house.
- R&P two post caps (20). Glue one to top of bottom and middle posts.
- Sand the two outside surfaces (2A & 2B) flat so they will fit snugly against the walls later.

## C. DOOR AND WINDOW TRIM

- R&P all walls and partitions with door or window openings (1,8,9,10,11,12,13,14,18) and lay flat on work surface/floor up. R&P all door and window trim (24,25,26,27,28,29,30,31,36,38,39), carefully sorting and marking them according to schematic notations. Note: there are multiples of six sizes of window:
  - Long Tower/Kitchen Bay — 9
  - Short Tower — 3
  - Wide single — 10
  - Double — 2
  - Vertical attic — 3
  - Oval — 3
  - and one skylight window (put skylight aside until later.)



- Glue all outside window sills (short sticks with corner notches at both ends) into their respective window openings. (Note: Sand the ends of the sill for the wide single window over the kitchen at a 45° angle to allow for roof trim later.)
- Glue vertical trim sticks along each edge of window opening being sure the bottom of each stick **rests on sill**. (Double windows require a center stick.)
- Glue curved trim piece at top of each window opening being sure ends butt against top of side trim sticks. Glue a window hood on top of each of the curved trim pieces.
- Glue one oval window trim piece, with keystone at top, on outside of each oval window opening. Glue in place one oval window hood (also with keystone at top) on each oval window trim. Glue small keystone piece on top of window hood keystone.
- Turn all wall pieces over on work surface so that all inside surfaces are facing up.
- Remove all windows from plastic window sheets. Apply glue along edge of window openings and glue in place the appropriate silkscreened plastic window. Be careful to **center plastic window over opening with equal amount of overlap on all sides. Don't use hot glue on plastic! Use white glue!**
- Glue in place inside window sill. (Inside sills are short sticks without notches at ends). Glue them over plastic window, centered along bottom edge, and flush with top edge of outside sill.
- Glue in place two side window trim pieces on top of plastic window, flush with sides on window opening, and butting with inside sill at bottom of window.
- Glue in place curved top window piece on top of plastic, flush with top of the window opening, and butting against ends of side trim pieces.
- Glue in oval window trim (no keystone) on each oval plastic window.
- Glue door trim along sides and top of door openings. Some openings get trim on one side, some both sides, and some have no trim. Use the following list:

### Exterior Doors...

	Inside Trim	Outside Trim
Front Door	✓	✓
French Doors (2 sets)	✓	✓
Kitchen Exterior	✓	✓
1st Floor Bay	✓	✓
2nd Floor Bay	✓	✓
Kitchen Bay	✓	✓
Back Bedroom Balcony	✓	✓

### Interior Doors...

	One Side	Both Sides	None
Dining/Kitchen	✓	✓	
Bathroom Doors (3)	✓	✓	
Master Bedroom/Hall	✓	✓	
Back Bedroom/Closets (2)	✓	✓	
Staircase Closet	✓	✓	
Attic/Tower	✓	✓	

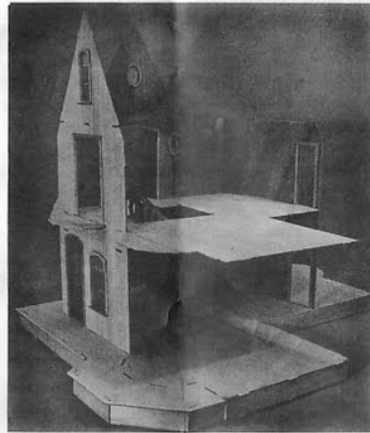
(Note: Side trim on 1st floor bay overlaps edge of opening in wall. This is to cover edge of removable bay which comes later.)

## D. WALLS AND FLOORS

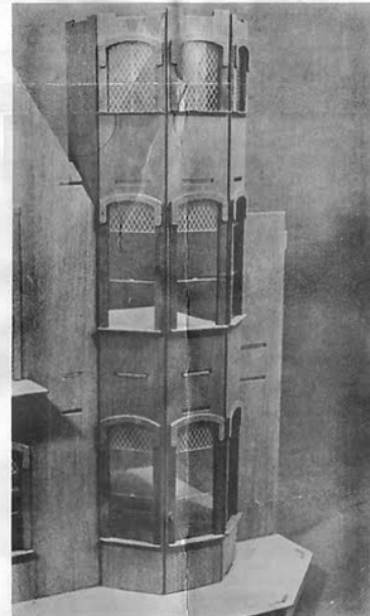
Note: Throughout this section follow both the assembly sequence and gluing instructions very carefully.

- Align front wall (8), and left wall (11) with their slots in first

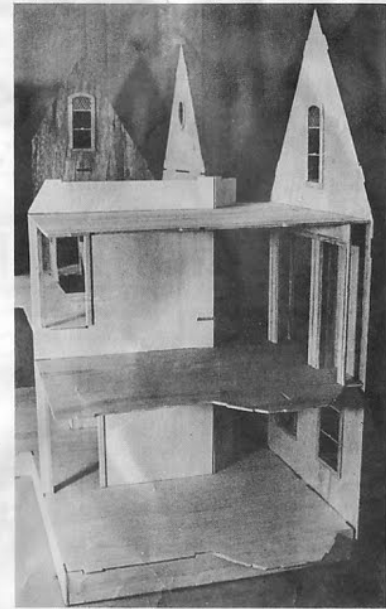
- R&P second floor front section (5). Butt second floor tower extension (15) against second floor where noted on schematic. (G). (Do not add on balcony extension at this time.)
- Install first floor staircase. Align with slots in first floor and notches in second floor. (G).
- Align kitchen/dining room partition (10) with slots in first floor and tabs on second floor. (G). (Note: the wide tab on the second floor fits second floor doorway).
- Align kitchen/dining room partition/corner (10) with slot in first floor and tab on second between kitchen/dining partition and left wall with right side facing out. (G).



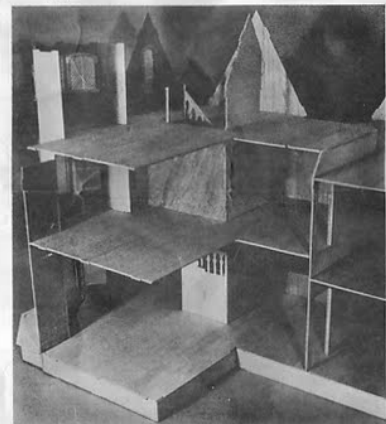
- R&P front wall/right section (8). Align with slot in first floor and tab on second. (G).
- R&P tower right side (14). Align with slot in first floor and tab on second. (G).
- R&P tower/left side (14). Align tab on tower side with slot in second floor and tab on edge of front wall. (G).
- Find tower side/center (14). (Note: center section has longer top tabs than the other sides). Align with slot in first floor and tab on second. (G).
- Align two remaining long tower sides (14) in the same way. Glue to floors only. Do not glue joints between tower sides at this time!



- Align kitchen door wall (8) with slot in first floor, back section, and slots in left wall. (G).
- Align left wall/back section (13) with tabs along edge of first floor/back section. Glue to first floor only, do not glue to kitchen door wall at this time!
- R&P second floor/back section (7). Align with slots in kitchen/dining partition and left wall/back section. Glue to both. (Note: Back section of second floor is lower than front section).
- R&P two closet side pieces (8). Align flush with each edge and square to the balcony opening in the left wall/back section. Glue to wall and floor.
- Align tabs of closet partition (18) with slots in second floor/back section. Glue to floor and closet side pieces only!
- R&P third floor/back section (7). Align with slots in kitchen/dining room partition, left wall/back section, and tabs on closet partition. Glue to all, plus glue joint between left wall/back section and kitchen/porch wall.
- Align second/third floor stairwell partition and bedroom/stairwell partition with notches along edges of second floor stairwell opening, and with each other. Glue to each other and second floor, but do not glue to front or



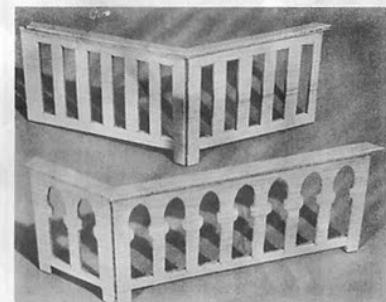
- R&P third floor/front section and third floor tower extension (9). Butt tower extension against third floor and glue. Slide third floor over second/third floor stairwell partition, align tabs with slots in front wall, tower, left wall, kitchen/dining room partition, and stairwell partitions. Glue all joints of third floor and joint between front and left walls.
- Install second floor staircase. Go through second floor bay opening in left wall, align with slots in third floor, push carefully until bottom snaps into notches in second floor. (G).



- Align backwall (9) with kitchen bay floor & ceiling, and tabs on first, second, and third floors. Glue all including left wall/back section.
- Align right wall (12) with tabs on the three floors and front wall/right section. (G).
- R&P three short tower sides (14). Align tabs with slots in third floor (piece with door is middle piece). Glue to third floor only!
- R&P tower top (7). Align tabs of tower top with notches in top edge of each tower side. Glue top in place, then glue all tower side pieces together.

## E. STAIRCASE RAILINGS

- R&P all parts of second floor staircase railing (22).



- Lay angled bannister face down.
- Notice on two railing sections one leg is longer. Butt edges with long legs together, set upside down on bannister, center, and glue entire assembly.
- Install railing on second floor. Insert long leg into slot, butt railing ends against 1st and 2nd staircases. (G).

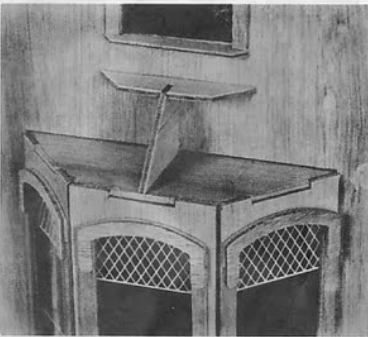
- Align railing section #1 along right side of staircase opening, good side facing into staircase. Leg laminates to staircase top post, other end fits notch in staircase partition. (G). Glue on long section of bannister.
- Layered bannister section (23) face down. Butt railing sections #1 & 2 together leg edge to leg edge, invert onto bannister and glue assembly.
- Align legs with slot in third floor, end of railing section #3 with notch in staircase partition, butt opposite end against staircase post. (G).
- Use remaining corner post tops (20) on second and third floor staircase posts.

## F. DINING/LIVING PARTITION

- R&P all parts (23). Along straight vertical edge of partition glue a trim piece (without notch) to both sides. On the opposite notched vertical edge, glue the notched trim on both sides. (Note: Make the top portion flush with trim. On bottom portion, trim will not be flush with notch.)
- Install between first and second floors, along angled joint between front and back sections of first floor. Butt notched edge against corner of staircase, and straight edge at inside corner of open back section (G).
- Align bedroom/bathroom partition (10) between second and third floors, between corner of stairwell partitions and inside corner of open back section. (Be sure exposed edge of both partitions align).

## G. KITCHEN BAY

- Align three sides of kitchen bay (1) between tabs on first & second floors. (G).

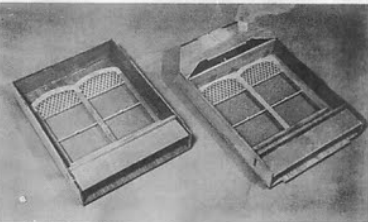


- R&P kitchen bay roof parts (2). Preassemble bay roof and bay roof support. Interlock slot in bay roof with tab on short side of roof support. (G). Align preassembled unit with slots in bay ceiling and back wall. (G).
- Align and glue three sections of kitchen bay roof.

## H. FRONT HALL BAYS

### FIRST FLOOR REMOVABLE BAY

- R&P first floor bay parts (11,12).
- Glue tabs of first floor window seat into slots in first floor bay sides. (Note: Be sure notches in sides face same direction).
- Glue first floor bay ceiling between and flush with ends of side pieces.
- Glue window seat support under window seat, flush with notches in sides.
- Lay first floor bay front face down. Set preassembled unit on it notched edges up, align sides, top & bottom edges. (G).
- Assembled bay slides into 1st floor opening in left wall. Notches in sides and tabs on wall align it properly. Bay may be permanently glued or left removable, however, after porch trim is in place, you must slide it along porch rather than completely remove it from the house. Sand top and bottom to make bay slide easily.



### SECOND FLOOR REMOVABLE BAY

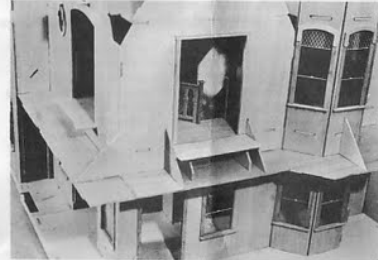
- R&P all parts (11,12).
- Align tabs on ceiling with notches in sides. (G)
- Align tabs on window seat and window seat support with slots in sides. (G).
- Fit ends of back bay roof support to remaining notches in sides. (G).
- Glue tab of center roof support into notch in back support and long tab into notch in bay ceiling.
- Fit bay top to tab on top edge of back support. Glue to back support and center support.
- Lay second floor bay front face down. Lay preassembled framework on front with back support up, align edges and glue.

and flush with edges.

- Check fit of bay roof assembly on center & back roof support, trim so back edges of roof sides are flush with back roof support. Sand entire backside of bay to make it easily removable from house.
- Install on left wall by inserting hanging tab on back support into slot in protruding section of third floor, and tab along lower edge of front into notch in second floor extension. Do not glue!

## I. PORCH CEILING

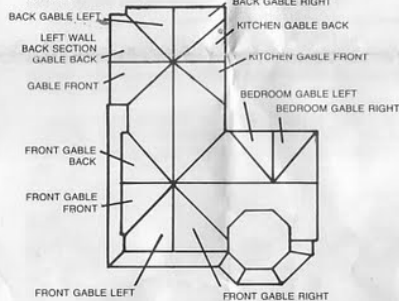
- R&P two parts of porch ceiling (16,17). Insert tabs on porch ceiling/left side into slots in kitchen door wall and left wall. Insert tab on triangular front wall extension into slot in left porch ceiling. (G).



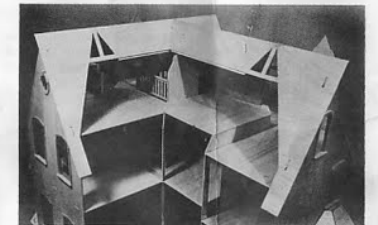
- Insert tabs on porch ceiling/front into slots in front wall and tower. Glue so it butts evenly with left ceiling piece.
- Remove three porch roof supports (8). Insert two supports (with tabs) into slots in front ceiling. Glue to ceiling and front wall.
- Remove two balcony floor supports (5). Glue to porch ceiling and front wall between triangular roof supports, about 1" from each.
- R&P second floor balcony extension (15). Butt against second floor extending through door opening in front wall and glue.
- Level balcony extension with second floor and glue to balcony supports and triangular porch roof supports.
- R&P Center third porch support (no tabs), on center tower side. Glue to tower side and porch ceiling.

## J. MAIN ROOF

Note: This diagram is to help you orient to the names of the roof sections.

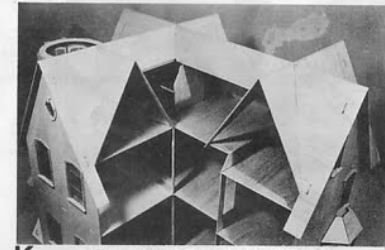


- R&P Front gable/front & back sections (15,18). Slide front section around tower sides, align slots with tabs on gables. Glue at tabs only!
- Lay back section of front gable face down. R&P front gable/remove section support (9). Align with horizontal support area of back section, wide portion down, thus forming a lip. (G)
- Align front gable/back section with tabs on gable ends. Glue at tabs and along peak with front section.
- R&P back gable/left and right sections (16,17). Lay right section face down. R&P back gable/remove section support (9). Align along horizontal support area with wide portion down, thus forming a lip. (G).
- Align both sections of back gable with tabs on backwall, tab on stairwell partition, and slot in front gable. Glue to gable ends and along peak.



- R&P front gable/right and left sections (17,18). Align with tabs on front wall. (G).
- R&P left wall gable/front and back (15, 19). Align with tabs on left wall/back section. (G).
- R&P two parts of kitchen gable (17). Align front section with notch in third floor and inside surface flush with edge of triangular opening in back gable. (G). Align back section with peak of front section and flush with triangular opening. (G).
- R&P two parts of bedroom gable (16). Align left section long tab with notch in third floor and inside flush with triangular

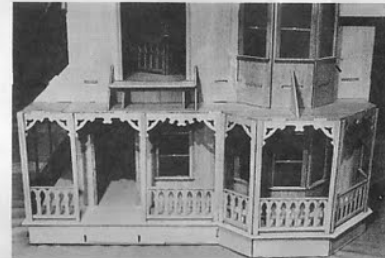
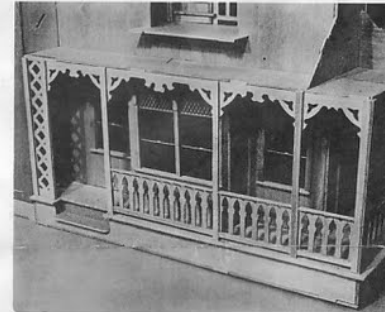
- R&P two removable roof sections (9,19). Remove skylight frame parts (9). Lay roof section with rectangular opening face up. Fit two long sticks along sides of opening and two shorter at top and bottom. (G).
- R&P skylight window trim (25) and skylight plastic window. Glue plastic window centered on back side of window trim, turn face up and glue trim over frame.
- Set small triangular roof section in remaining opening in front gable. Rest long top edge on lip of roof, and point in notch at corner of third floor. Then hang large removable roof section on tab on stairwell partition, and rest top edge on roof lip.



## K. PORCH CEILING TRIM

Note: Before you begin gluing trim, be sure to put 1st floor bay in place against left wall. After the trim is in place it will not be possible to remove it from the porch!

- R&P trellis (33). Align with the notched edge as upper right corner, left edge butting against kitchen door wall, and top edge in wide notch in left porch ceiling. (G). (Note: Notch in ceiling is wider than trellis top.)
- R&P porch ceiling trim parts (33). Note part numbers in pencil on each. Numbers correspond to numbers used on foundation sides in step A. Begin with #13. It sits in notch in trellis and notches in porch ceiling. (G). Glue remaining parts 1-5.



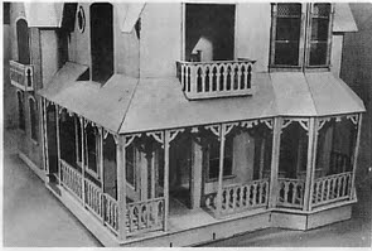
## L. PORCH RAILING AND POSTS

- R&P all porch railing sections (34); number each with pencil. R&P 18 porch posts (18). Note corner posts, and mark with pencil.
- Start with trellis. Glue one porch post flat against each vertical side of trellis.
- Glue the third post on other side of porch steps, between brackets on ceiling trim and porch floor. (Be sure post is vertical in both directions.)
- Glue back end of railing section #13 to the backside of porch post with end of railing, flush with edge of post. Find two sticks numbered 13-A(34). Glue one to top of railing as a cap, and the second flat along the bottom edge with top edge flush with bottom of railing cutouts.
- Next glue on another post flat against railing, butting against railing cap and trim. Glue post to ceiling trim and porch floor, again being sure it is vertical.
- Continue this process until all railing sections and posts are in place. (Note: Section #1 is divided into two parts, 1A goes to the left of the front door, and 1B to the right.) (Also, corner post is made up of wide and narrow posts glued at 90° to each other, wide post to the front.)

## M. PORCH ROOF

- R&P all sections of porch roof (8,15,16). Slide end tab of #13 (Numbers again correspond to foundation numbers) into slot in kitchen door wall, and slot onto tab on triangular extension of front wall. (G).
- Align porch roof section #1 with tabs on two triangular roof supports. (G).
- Align tab on #5 with slot in front wall. (G).





## N. BALCONY RAILINGS

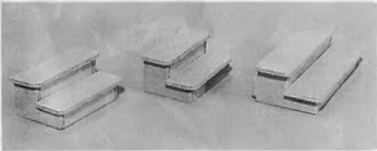
1. R&P all parts of balcony railings (33).
2. **Front balcony...**  
Glue two side railings on top surface of balcony floor, against porch roof supports. Glue front railings along front edge of balcony floor flush with bottom edge and with side railings. Glue balcony railing along top edge or railings.
3. **Back bedroom balcony...**  
Glue side railings, then front railing, along edges of balcony floor, flush with bottom edge. Glue balcony railing along top edge of railing.

## O. LATTICE

1. R&P all lattice (35,36) numbering each with pencil. (Numbers correspond to foundation numbers). **There are two of each number.** Laminate the two identical pieces together so that the diagonal cutouts go in **opposite directions.** Glue #13 back to front, and all others glue back to back.
2. Beginning with #13, glue laminated lattice sections to foundation sides. (Note: Section #1 is divided into two parts with 1-A to the left and 1B to the right of the front steps.)

## P. STEPS

1. R&P all parts of front steps (11). Glue risers **between** sides, narrow on bottom, wide on top. Center steps side to side, and **flush with back edge.** (G). Align tabs on step sides with slots in foundation #1. (G).



2. R&P remaining step parts (11). These parts make up two identical step units. Assemble in the same way as front steps. Glue one unit in back bedroom for bathroom door, and second in bath attic.

## Q. GABLE TRIM

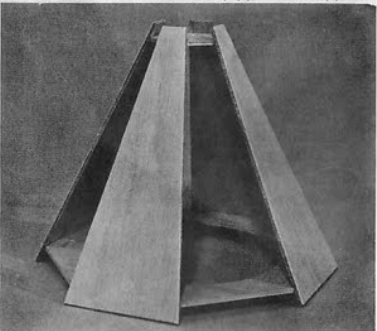
1. R&P gable trim strips (16). Glue strips to **underside of roof ends.** In each pair of trim pieces, one is longer. Glue **long piece first**, then short. Sand ends flush with roof edge.
2. R&P verge boards (31,32,37). There are left and right pieces. Butt angled ends of left and right together and glue. When dry, carefully position the assembled unit in the roof gable overhang, **behind the trim strips.** Glue verge boards to **backside** of trim strips. (Note: the front gable right verge board is shorter than the others, there are two extra verge boards, and there are no verge boards in the two small gables.)

## R. TOWER BRACKETS

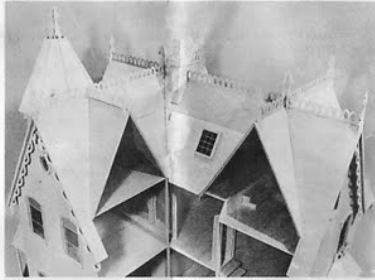
1. R&P tower brackets (38). Glue one at each joint between tower sides, flush with the tower top.

## S. TOWER ROOF

1. R&P tower roof bottom and top (7), and sides (3).

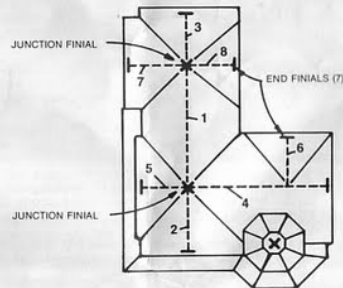


2. Turn tower roof sides face down and draw pencil lines across them  $\frac{7}{16}$ " up from bottom edge and  $\frac{3}{16}$ " down from top edge.
3. Glue tower roof bottom and top pieces in their respective locations **between** and along these two lines. First glue in place any two opposing sections, then two opposing sections at 90 degrees to first. Glue four remaining sections in place. Double check to see that all pieces are aligned properly, then run glue along each joint between sections. Check to see that tower roof sits properly on tower and that two tabs projecting above tower top align with the two slots in tower roof bottom. You may leave the tower roof loose for access to tower room.



opposite sides of wide section. Be sure all four feet sit well, then glue to center of tower roof.

2. Preassemble two junction finials in the same way.
3. R&P roof ridge trim (24,35,36). Number each with pencil. Using the diagram glue finials and roof ridge trim along roof peaks in the following order:
  1. Two junction finials
  2. Roof ridge trim in numerical order
  3. Remaining finials at ends of roof ridge trim

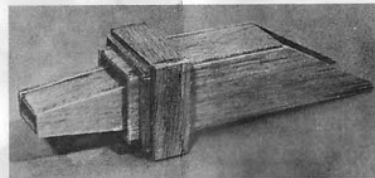


## U. BAY ROOF TRIM

1. **Kitchen Bay Roof...**  
R&P three pieces of trim (35). Be sure the ends of the sill above kitchen bay are trimmed to about 45° to allow for roof trim. Butt side pieces to front piece of trim, being sure long edges of sides are at ends of assembly. Tape temporarily. Bend assembly along contour of roof so that sides butt against back wall. (G)
2. **2nd Floor Bay...**  
R&P 2nd floor bay roof trim (35). Glue side pieces square to, and along back edge of, front trim. Align along top edge of bay roof. (G).

## V. CHIMNEY

1. R&P all parts of chimney (13). Glue two straight sides to two angled sides. Long side **overlaps** angled sides, short side fits **between** angled sides. Before putting on last side, insert chimney top and recess about  $\frac{1}{4}$ ". (G).



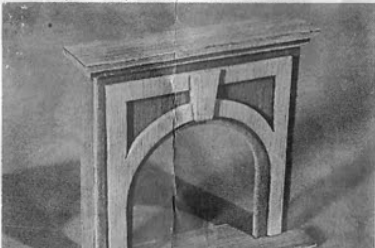
2. Glue wide trim around chimney about  $\frac{1}{8}$ " from top. Glue second trim layer centered on wide trim.
3. Assemble flue with straight sides **between** angled sides. Glue flue to chimney top.
4. Install chimney on right side of back roof just above staircase partition.

## W. WINDOW SEATS

1. R&P all parts (12). There is a seat for 1st and 2nd floor tower, each with three base sections.
2. Lay seats face down. Glue one leg unit about  $\frac{1}{4}$ " in from each end, and the third in the middle **square** to seat and square to wall. Install in house.

## X. FIREPLACES

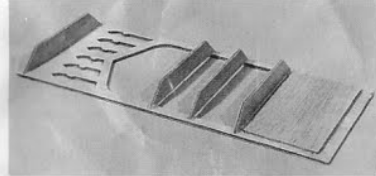
1. R&P all fireplace parts (12,13). There are two identical fireplaces, repeat instructions for second.



2. Align fireplace front with slots in fireplace hearth. Be sure widest hearth section is facing **outside**, glue in place.
3. Align right and left fireplace sides against back section of hearth and along back of the front piece flush with the right and left edges. Glue in place.
4. Glue the shorter of the fireplace top pieces to the top of the fireplace so that it is **flush with the back**, overhangs the front, and overhangs each side equally.
5. Glue the wider fireplace top on top of the first so that it is **flush with the back** and overhangs the front and both sides.
6. R&P fireplace trim (37). Center on fireplace front, (G). Glue keystone on middle area of trim.
7. Install in house. Location is your choice.

## Y. CORNER CUPBOARD

1. R&P all parts of cupboard (23). Lay front face down. Glue bottom backing over area with vertical slots.



2. There are four shelves. Glue bottom one flush with bottom edge of large opening, top one flush with top of unit, and last one to wherever desired across the opening. **Align them carefully!**
3. Install cupboard in dining room on corner wall. (G).

## Z. PANTRY

1. R&P all parts of pantry (14). Lay back face up. Butt sides against edges. (G). There are six shelves, space as desired between sides. (G).



2. Install in kitchen, butting side against left wall with shelves facing outside kitchen door. (G).

## CONGRATULATIONS!

You have just completed your Garfield dollhouse. Enjoy it today and for many years to come.

## THE GREENLEAF GUARANTEE

Thank you for buying Greenleaf, the nation's leader in die-cut dollhouses, bringing you quality and dependability for over 25 years. We make every effort to bring you our products in perfect condition, but if you find any missing or defective parts contact us with the name and sheet number of the part you need. (This information is found on the schematics.) We'll happily send you a replacement part. If you have any other questions or comments about our products, please contact us directly.

**GREENLEAF, INC.**  
436 Lake Road  
Schenevus, NY 12155  
800-253-7150  
607-638-9351

The Garfield Dollhouse: 8010  
Copyright 1981 Greenleaf Inc.  
All rights reserved. Made and printed  
in the U.S.A.