

Progress is

change + diversification



Dennis Chia

Director, Ensign Infosecurity Pte. Ltd.

STARHUB INVESTOR DAY 2020

Ensign: Securing Our Future

18 November 2020



FORWARD-LOOKING STATEMENTS



The following presentation may contain forward-looking statements by StarHub Ltd (“StarHub”) relating to financial trends for future periods.

Some of the statements in this presentation which are not historical facts are statements of future expectations with respect to the financial conditions, results of operations and businesses, and related plans and objectives. These forward-looking statements are based on StarHub’s current views, intentions, plans, expectations, assumptions and beliefs about future events and are subject to risks, uncertainties and other factors, many of which are outside StarHub’s control. Important factors that could cause actual results to differ materially from the expectations expressed or implied in the forward-looking statements include known and unknown risks and uncertainties. Because actual results could differ materially from StarHub’s current views, intentions, plans, expectations, assumptions and beliefs about the future, such forward-looking statements are not and should not be construed as a representation, forecast or projection of future performance of StarHub. It should be noted that the actual performance of StarHub may vary significantly from such statements.



Region's Largest Pure-Play Cybersecurity Expertise & Innovation

MYANMAR

Telco

MALAYSIA (Office)

FSI, Retail, Govt, etc

INDONESIA

Tech

HONG KONG (Office)

Govt, FSI, Tech, etc

VIETNAM

Utilities

SINGAPORE (HQ)

BRUNEI

FSI

SOUTH KOREA (Office)

*E-Commerce**

** Customer Segment*

TRUE END-TO-END PUREPLAY CYBERSECURITY SERVICES PROVIDER



1 ENSIGN CONSULTING

- Expertise to help clients understand their cyber-readiness, develop cybersecurity strategy, and respond to cyber-incidents

Cyber Advisory

Security Assurance

Compliance & Assessment

Threat Hunting & IR

2 ENSIGN SYSTEMS INTEGRATION

- Architecting and Implementing Cyber Security Solutions to bolster the defences of our clients

Security Architecture

Advanced SOC design & build

IT, OT, Cloud & IoT Expertise

3 ENSIGN MANAGED SECURITY SERVICES

- End-to-end Management of cybersecurity operations
- Advanced Threat detection, Continuous monitoring, Triage, and Response Services

Advanced Security Operations

End-to-end Security Management

Advanced Threat Detection & Response

4 ENSIGN LABS (RESEARCH & DEVELOPMENT)

Supporting Ensign with deep cybersecurity research in areas such as Cyber Analytics and Threat Intelligence

Big Data Analytics

Threat Research & Intelligence

Malware Reverse Engineering

Security Data Science

INNOVATE



ARCHITECTURE DESIGN, BUILD & ON-PREMISE OPERATIONS



ACCESS &
IDENTITY



ADAPTIVE
DEFENCE



ADVANCED
ANALYTICS



CLOUD
SECURITY



GOVERNANCE,
RISK &
COMPLIANCE



OT/IOT
SECURITY

DEEP EXPERTISE IN BUILD-AND-OPERATE FOR COMPLEX PROJECTS

Unique insight into operational requirements

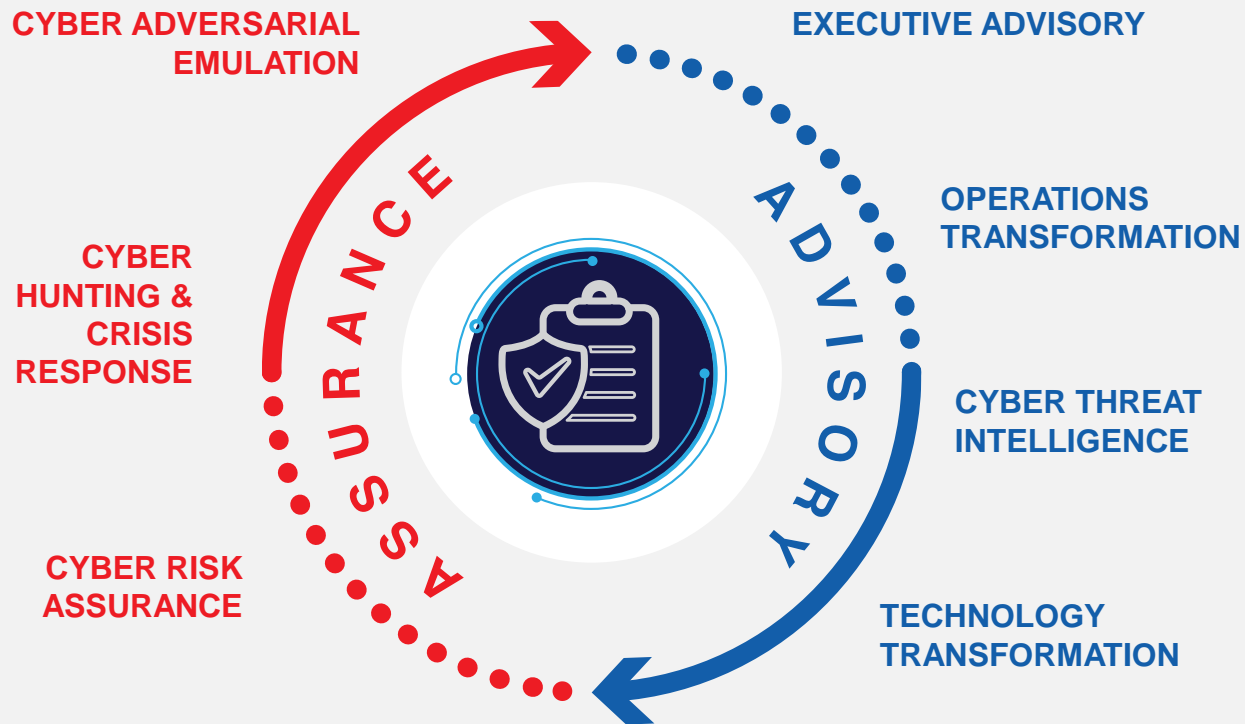
Experience in designing solutions that cater to specific and bespoke needs

Project builds with complex and interconnected parts



CONSULTING

Enabling Robust Cybersecurity Strategies against the Threats of Tomorrow



MANAGED SECURITY SERVICES

Full Telemetry & Enhanced Visibility Over Data Environments & Networks

3 SOCs

Singapore, Malaysia, Hong Kong

~50 Enterprises

Monitored by Ensign's Commercial SOC in Singapore

KEY CAPABILITIES

Enhanced Accuracy; Quicker Detection

Ensign Cyber Threat Intelligence Platform

Contextualised & actionable cyber threat intelligence

Network Traffic Analytics

Complete visibility; faster response time

Powered by Automation

Accuracy, consistency & efficiency in handling security alerts & incident investigation

LABS: PROPRIETARY CYBER THREAT INTELLIGENCE

Powered by Big Data & AI; Deep Domain Expertise



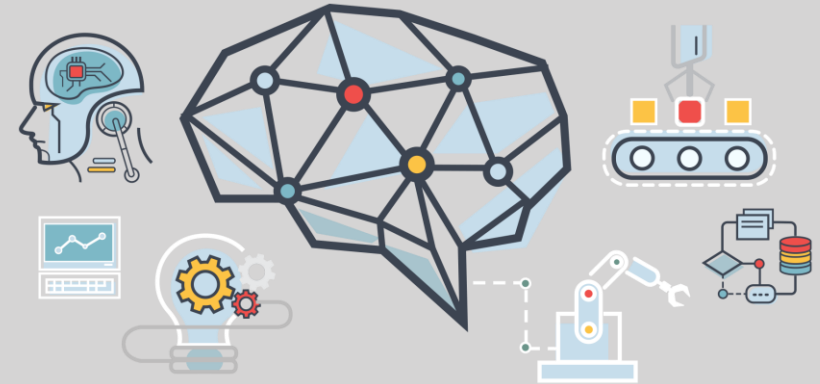
Augment and power Consulting, SI and MSS business units to provide more value to clients:

REAL-TIME STREAMING DATA



- **Access to large volumes of network traffic data**, including traffic that hackers use to exfiltrate sensitive data
- Ability to process massive data volumes to **derive meaningful insights**

MACHINE LEARNING ALGORITHM



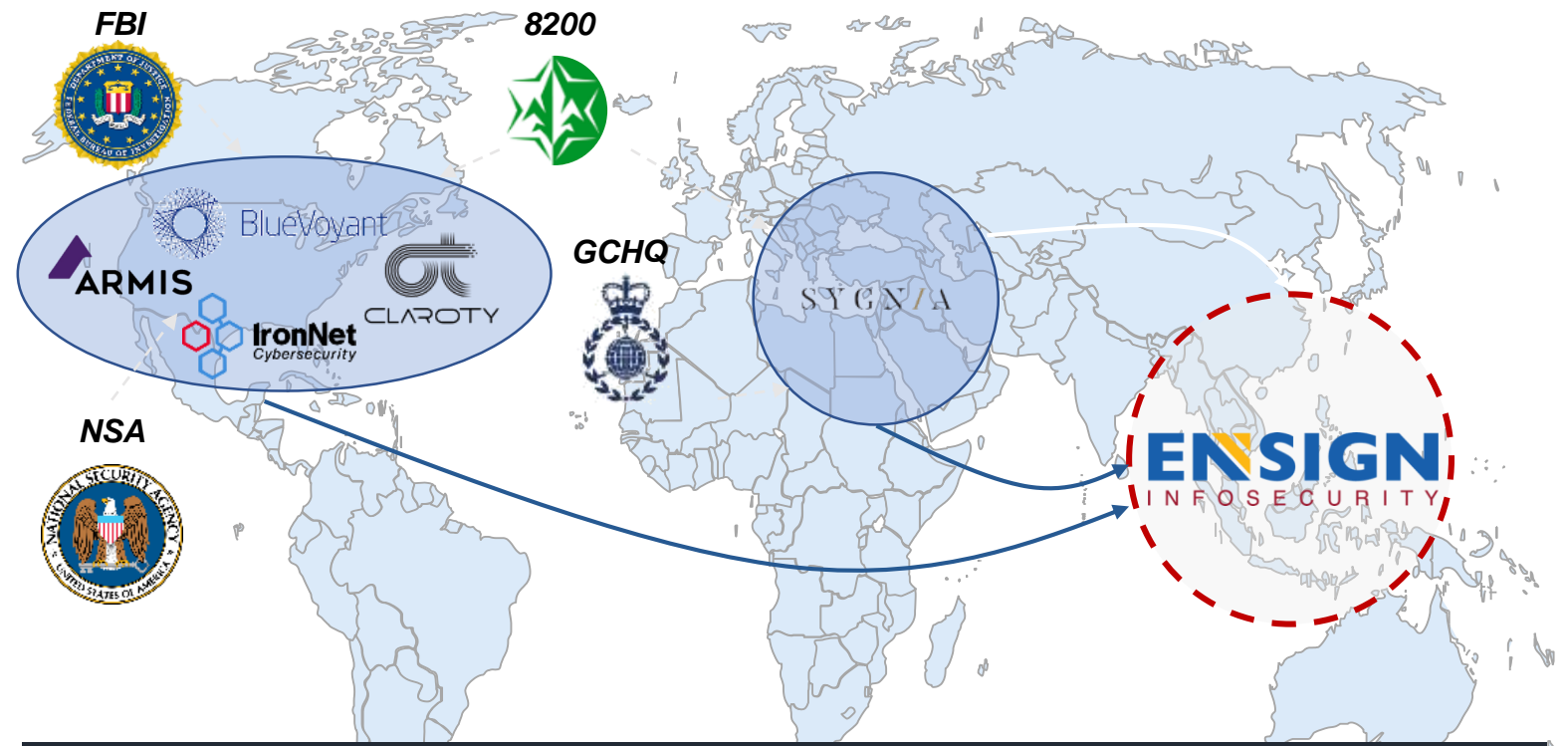
- Apply **efficient big data algorithms** to high capacity real-time streaming data
- **Dynamically learn to differentiate** between normal and abnormal traffic behavior
- **Identify anomalous/malicious activities** that evolve faster than the known IoCs in typical threat intel feeds



ACCESS TO TOP-TIER CAPABILITIES & PARTNERS GLOBALLY



	Professional services firm founded by Team8 and former Unit 8200 personnel
	Cyber IT analytics firm specialising in detecting threats on networks
	Cyber OT analytics firm specialising in protecting ICS assets
	Agentless Cyber platform specialising in securing unmanaged and IoT devices
	Threat intelligence firm with unique access to global DNS data, MSS and professional services capabilities
	Expertise in the research, design, and development of next-generation cryptographic solutions to address data security concerns



- Access to a large global pool of highly talented cyber operatives
- Tap on partners' expertise to strengthen delivery of solutions for Asia-Pacific region
- Cyber luminaries among Ensign's network of cyber strategy advisors (ex-NSA, FBI GCHQ, etc)

Develop & Deliver Advanced Cryptographic Tech for High security Assurance Applications

3 Business Lines:

Card Readers & Transaction Tokens

Encryptors

Bespoke High-Performance Computers

Fully-Integrated Value Chain:

Hardware

Software

Cryptography

DEVELOPMENT

MANUFACTURING

TEST & MAINTENANCE

CLIENTS

Government, CII Sectors, Security

PROVEN TRACK RECORD MANAGING & DELIVERY OF LARGE PROJECTS

D'Cryptor ZE

Computational & security core used in the Electronic Road Pricing (ERP) IN-Vehicle Unit currently used in Singapore's existing ERP System.

ADVANCED R&D

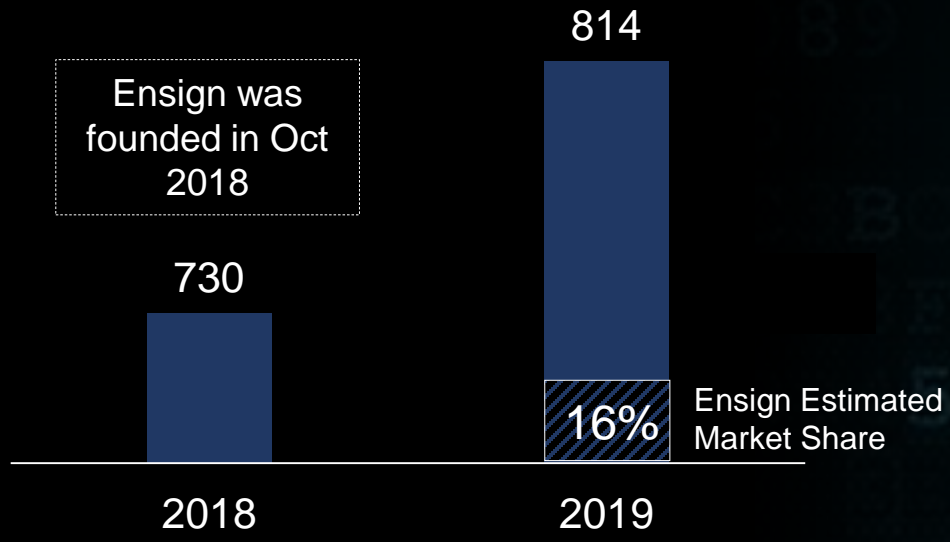
NEW PRODUCTS; QUICK TIME TO MARKET

BluePass & BlueGate

Commenced delivery of over 450,000 enterprise IoT devices for contact tracing in 2020.

SUBSTANTIAL MARKET POTENTIAL

Singapore Security Services Market¹
S\$'M



¹ Source: Gartner / Business Times, 15 August 2018

PROTECTING THE CRITICAL INFORMATION INFRASTRUCTURE SECTORS



GOVERNMENT

Regulatory agency in Singapore

Designed, built and resourced an Advanced Security Operations Centre that included CTI, SOAR, compliance and vulnerability management, and big data analytics



ENERGY

One of Asia's biggest chemical companies

Performed an Integrated Cybersecurity Maturity Assessment and Proactive Threat Hunting across 7 sites. Managed 2 breaches since commissioning, and identified 480 unique malware variants in 3 months



BFSI

Tier 1 banks in Singapore and Malaysia

Providing Managed Security Services, on-site support and maintenance, and 24/7 security incident monitoring services for top banks in the region



HEALTHCARE

Leader in Healthcare IT digitalisation for the country's health ecosystem

Implemented a sector-wide Database Activity Monitoring solution that discovers sensitive data, identifies vulnerabilities, and monitors database user activity to protect against data breaches



LAND TRANSPORT



SECURITY & EMERGENCY



WATER



INFOCOMM



MEDIA



MARITIME



AVIATION

KEY GROWTH STRATEGIES

The background of the slide features a photograph of two hikers on a rocky mountain peak. One hiker is standing on a higher rock, reaching out to assist another hiker who is climbing up. The scene is set against a clear blue sky with a hint of sunset or sunrise, creating a warm and inspiring atmosphere.

01

Deepen existing customer relationships, pursue larger & more complex projects

02

Diversify & broaden customer base
*Sectorial opportunities:
Industrial, manufacturing,
healthcare*

03

Strengthen suite of capabilities and partner collaborations

04

Deepen footprint in existing markets; explore new regional opportunities

05

Ride 5G wave – increased need for cybersecurity services

Progress is

change + diversification



STARHUB INVESTOR DAY 2020

Ensign: Securing Our Future

Investor Relations:

Amelia LEE | IR@StarHub.com