



Congregation Emanu El

Bulletin

NOVEMBER 2024 | TISHREI 5784 – HESHVAN 5785

VOLUME 79 NUMBER 2

FROM RABBI HAYON



And today, as Reform Jews, we would do well to remember that we owe allegiance both to our Jewish tradition and to the laws and standards of the city, state and nation where we make our home.

Because of our printing and publication deadlines, I write each month's *Bulletin* article a number of weeks before they arrive in your mailboxes. So, at the time I'm writing these words, November is still some time away – but it is already quite clear to me that this month's federal elections will bring a great deal of energetic participation – and also some angst and anxiety – to our communities and our entire nation.

This year, our EE Votes initiative has once again been hard at work to share clear, nonpartisan information about the mechanisms of voter registration and the details for how those eligible to vote can exercise their civic duty. I am proud of the work they have done, and take special pride in knowing that our congregation boasts a near-perfect record for our members establishing and maintaining their voter registration. This is good news for our community, and for our democracy.

Our national discourse about election integrity and security has been increasingly difficult over the past years. Conspiracy theories fed by rumors and misinformation contribute to Americans' distrust of our elected officials and the mechanisms of our government. I fervently hope that this month's elections will proceed smoothly, without difficulty or incident. And I furthermore hope that, in every race that results in an elected official's seat changing

continued on page 2



Heritage Shabbat followed by Special Oneg Shabbat Honoring Legacy Society Friday, November 22

Service 6:00 p.m. | Oneg Shabbat 7:00 p.m.

Join us for Heritage Shabbat featuring Cantor Simmons, Emanu El's professional octet and our organist, Ann Frohbieter. We will share the treasured music of our heritage with classical settings that convey the majestic tranquility and joy of Shabbat.

Continue celebrating Shabbat with us following Heritage Shabbat for a special oneg to honor over 65 members of the Congregation Emanu El Legacy Society. These congregants and supporters have made provisions to

continued on page 2



CHAVA MIREL
ARTIST IN RESIDENCE

NOVEMBER 15 - 17
LEARN MORE INSIDE



SHABBAT WORSHIP

Friday night services are streamed on our website, Facebook page, Roku channel, and YouTube. Saturday morning B'nei Mitzvah services are available solely on the website, and Saturday services take place in Proler Chapel as an in-person experience only. Any changes will be shared through synagogue communications.

Shabbat Noach Friday, November 1

6:00 p.m., Kabbalat Shabbat Proler Chapel

Saturday, November 2

10:30 a.m., Morning Service, Proler Chapel
10:30 a.m., Morning Service, Barish Sanctuary
Bat Mitzvah of **Leighton Smith**, daughter of Emily Jones and Michael Smith

Shabbat Lech L'cha Friday, November 8

6:00 p.m., Kabbalat Shabbat Proler Chapel

Saturday, November 9

10:30 a.m., Morning Service, Proler Chapel
10:30 a.m., Morning Service, Barish Sanctuary
B'not Mitzvah of **Hazel Harrington**, daughter of Kimberly & Zachariah Harrington, and **Anna Taylor**, daughter of Julie & Jeremy Taylor

Shabbat Vayeira Friday, November 15

6:00 p.m., Kabbalat Shabbat, Proler Chapel

Saturday, November 16

10:30 a.m., Morning Service, Proler Chapel
10:30 a.m., Morning Service, Barish Sanctuary
B'nei Mitzvah of **Wiley Kolfat**, son of Amy Lynch Kolfat and Erik Kolfat, and **Zachary Taylor**, son of Kimberlee & Gary Taylor

Shabbat Chayei Sarah Friday, November 22

6:00 p.m., Kabbalat Shabbat, Proler Chapel

Saturday, November 23

10:30 a.m., Morning Service, Proler Chapel
10:30 a.m., Morning Service, Barish Sanctuary
B'not Mitzvah of **Sarah Berger**, daughter of Lauren Brackman Berger & Eric Berger, and **Carson Weinberg**, daughter of Jamie & Jeffrey Weinberg

Shabbat Tol'dot Friday, November 29

6:00 p.m., Kabbalat Shabbat, Proler Chapel

Saturday, November 30

10:30 a.m., Morning Service, Proler Chapel

MAZEL MOMENTS

Mazel Tov to Emanu El's very own admin team member, **Jessie Cassorla**, on her wedding with ceremony and celebration shared with **Daniel Huvad**.

FROM RABBI HAYON *continued from page 1*

hands, the transfer of power will take place with the civility and dignity it deserves.

2600 years ago, the prophet Jeremiah urged his followers to root themselves deeply and authentically in the communities where they lived, building homes there and investing in the civic infrastructure. "Seek the welfare of the city," the prophet taught, "and pray to God on its behalf; for in its prosperity you shall prosper" (29: 4-7). Jeremiah recognized that the wellbeing of our religious community cannot be decoupled from the moral and material support we lend to the nation where we live. And today, as Reform Jews, we would do well to remember that we owe allegiance both to our Jewish tradition and to the laws and standards of the city, state and nation where we make our home.

May this month – and all the months that follow – be times of tranquility and peace, partnership and friendship throughout our community, and throughout our great nation.

Congregation Emanu El Bulletin (USPS 399-430) is published monthly by Congregation Emanu El, 1500 Sunset, Houston, Texas 77005. Periodical paid at Houston, Texas. POSTMASTER: send address changes to Congregation Emanu El Bulletin, 1500 Sunset, Houston, Texas 77005.

HERITAGE SHABBAT FOLLOWED BY SPECIAL ONEG SHABBAT HONORING LEGACY SOCIETY

continued from page 1

leave an after-lifetime gift to Congregation Emanu El. This oneg is sponsored by the Houston Jewish Community Foundation as part of the partnership between Emanu El and HJCF to encourage planned giving.

You too can be a part of the Emanu El Legacy Society. Contact Anna Shabtay, Director of Congregational Advancement, by phone at 713.987.3316 or contact her by email at annas@emanuelhouston.org.



LIKE US ON

facebook®

<http://www.facebook.com/emanuelhouston>

LIFECYCLE EVENTS

WEDDINGS

Jessie Bursten & Brad Marine
Jessie Cassorla & Daniel Huvard

BIRTHS

Lily Alexandra Bursten, daughter of Sarah Rohan & Sam Bursten; granddaughter of Vicki & Andrew Bursten; great-granddaughter of Marlene & Lawrence Bursten

John James “JJ” Donnenfield, son of Emily & Noah Donnenfield

Miles Bercow Gualtieri, son of Alexandra Bercow & Anthony Gualtieri

Avi Drew Zimmerman, son of Kirsten Seglem & Dan Zimmerman

DEATHS

Gilbert Cohen, father of Megan & Jay Cohen and Ann & Christopher Wilsher; grandfather of Caroline, Louis, and Henry Cohen and Alice, Reid, and Trent Wilsher

Robert F. Goldfarb, father of Ann & Richard Goldfarb; grandfather of Ann & David Goldfarb and Meg & Stephen Goldfarb; great-grandfather of Max, Will, Gus, Bobby, Charlie, and Sam

Janice Goldstein, mother of Bonnie & Gary Blumberg and Leslee & Rob Bassman; grandmother of Hayley & Jonathan Gerber and Ashley and Samantha Bassman; great-grandmother of Max and Jonah Gerber

Gerald “Jerry” Isaacs, father of Lindsay & Jordan Hirsch; grandfather of Reeve and Ledger Hirsch

Barbara Black Levine, wife of Irvin Levine; sibling of Dayle & Mark Krinsky; mother of Lisa Aaronson & Lanny Sachnowitz, Leslie & Eric Meimoun, and Sheila Sachnowitz; grandmother of Jonah, Sam, and Sophia Sachnowitz, Arielle, Alexandra, and Noah Meimoun, and Emily, Lauryn, Daniel, and Jonathan Curl; stepmother of Rhonda & Eric Lipper and Monica & Steve Levine; and their families including Joe Lipper, Jessica Levine, Edy Maldonado Jr., Erandy and Celine Alvarez, and Camila

Carla Schein, sibling-in-law of Bette & Richard Pesikoff

Phyllis Talit, mother of Kathy & Sol Sonabend and Beverly & Ken Sonabend; grandmother of Rona & Michael Sonabend, Heather & Mark Eggerstorfer, Michelle & Craig Davidoff, and Jaime & Adam Janowitz; great-grandmother of Noah Sonabend, Mia Sonabend, Ethan Eggerstorfer, Seth Davidoff, and Alexis Davidoff

Sandy Wexler, wife of Mike Wexler; stepmother of Seth Wexler, Adam Wexler, Lesley Wexler, and Kottie Kraitman; grandmother of Luke, Helen, Claire, Samantha, Ryan, Katie, Joe, and Sarah; sibling of Elaine Knobler

The submission below was not included in the *Book of Memory* that was distributed during High Holy Days services and is shared as part of our temple's *Bulletin*:

IN MEMORY OF

Adam Edward Grossman, Ruth Silverstein, Linda Ellen Silverstein, Philip Silverstein, Abraham Gross, Bertha Brand, Jacob Brand, and David Barnett Grossman

by Roberta Grossman, Irene, Daniel, Benjamin, & David Heifetz

A Notice About Bereavement Communications

Bereavement notices for our temple family are distributed with the permission of the deceased's family, and the timing of these notices is dictated by the family's request. Of course, each family grieves in its own way, and we are grateful for our congregation's patience and understanding with different families' preferences about how their loss is publicized.



Get Social With Us!

In addition to our active Facebook pages, be sure to follow us on Instagram to catch snap shots of happenings around the synagogue, including social action, a thriving youth group, our clergy in action and more!

Find us on Instagram at @emanuelhouston. And yes, please feel free to “check in” at Emanu El when you are here for events and happenings!

2024 Ann and Stephen Kaufman Jewish Book & Arts Festival Opening Night

Featuring Noa Tishby, author of *Uncomfortable Conversations with a Jew*




Sunday, November 3
7:00 PM
Congregation Beth Israel



Gathering Place

First Wednesday of the Month, 10:00 a.m.

Next Gathering: November 6



On the first Wednesday morning of every month, you will find the Oshman Multi-Purpose room filled with music and laughter, as our Gathering Place volunteers, Care-Partners and Caregivers spend a morning of coffee and conversation, games, music and, of course, food! The Gathering Place program is a free half-day activity program created to encourage socialization and engagement in an environment where everyone feels at ease. We believe in creating moments of joy and connection, regardless of memory loss challenges. Our volunteers are trained by the professional staff at CarePartners, who ensure that our Gathering Place is supported by qualified staff members and volunteers.

If you, or someone you know, is serving as a caregiver for a loved one with mild to moderate memory loss and believe that your loved one would benefit from a morning of engagement and socialization, or if you, as a caregiver, would benefit from a morning to relax and recharge your batteries, please contact Fredi Bleeker Franks at fredi.bleeker@gmail.com for information on our Gathering Place.



Monthly Lunch & Learn with Rabbi Silk Jewish Wisdom for Life's Great Questions

7-session class on the first Wednesday of the month

Beginning November 6, 12:30 p.m.

What is the role of gratitude in our lives? Is forgiveness important? How do we present ourselves to the world? Who am I responsible for? What is my relationship with God, and who is the God I may or may not believe in?

In this class we will explore the big questions of life as refracted through the Jewish tradition. Using the IYUN program from Hillel's Jewish Learning Fellowship, we will read – broadly and generously – traditional Jewish texts on conceptions of divinity, the inner life versus the public persona, the power of speech, community, and more.

Bring your lunch, we will provide dessert, beverages, and nourishment for your mind and soul.

Pre-registration is required, please contact Shira in Rabbi Silk's office.

Space is limited and priority is given to members of Congregation of Emanu El.



Women of Gen-X: Invigorating Your Glamour Wednesday, November 6, 6:30 p.m.

The Women of Gen-X invite you to attend Invigorating Your Glamour, a free- informative session hosted by Glamour Med Spa. At the event, guests will be joined by Dr. Bachilo and team to address concerns or questions people may have about their individual aesthetic goals. Glamour Med Spa offers a personalized, concierge level of service with focused treatments for the body, face and skin.

This off-site event has limited seating! Register ASAP! Visit our web calendar to register and for location information.

continued next page



Emanu El Cares! Volunteering for Houston's Unhoused and Veterans Population Sunday, November 10, 12:30 p.m.

It's volunteer time again! On Sunday, November 10, we will be joined by leadership of Houston Coalition for the Homeless of Houston/Harris County and Combined Arms to learn a little bit about the unhoused population, including veterans, in our community. Let's show these two organizations how much Emanu El Cares!

For this mitzvah, we will be assembling first-aid kits, cold weather kits and children's activity kits. To help us achieve our kit goals, we are seeking donations for these kits as well as volunteers to help with the sorting and packing process on **November 10**, beginning with lunch at 12:30 p.m.

Donations will be accepted now through the assembly date, November 10! The donation drop-off location is inside the Emanu El rotunda in one of the bins marked "Emanu El Cares! November 10."

For a list of supplies or to register for the volunteering event, visit emanuelhouston.org/eecares-2024.



Warehouse Shabbat

Friday, November 15

Doors open at 7:30 p.m. | Service at 8:00 p.m.

Join Rabbi Fixler, Cantor Simmons and their live band for this rocking, adults-only worship event designed to be a dynamic, lively and musical prayer experience to rejuvenate your heart and uplift your spirit. Enjoy local desserts and drinks during this exciting Shabbat program! All adults, young professionals and the young at heart are invited to this Shabbat service at Congregation Emanu El.

During this special edition of Warehouse Shabbat, we will be joined by musical guest Chava Mirel as part of MUSIC AT EMANU EL's artist in residence weekend.



Widow to Widow Group

Thursday, November 21

4:00 p.m. Casual Meet-the-Group

5:00 p.m. Optional Dinner

Widow to Widow is a support group offering comfort and companionship during times of loss and transitions, and this support is for all stages of loss and grief.

Beginning at 4:00 p.m., guests will enjoy socializing before dinner at 5:00 p.m. The cost of dinner is \$8 per person. Register online by visiting our web calendar.

SAVE THE DATES

Save the dates for these fantastic opportunities to come and join together with your congregational family. More information can be found on our website calendar at emanuelhouston.org/calendar and our weekly eLetter.

Rozelle & Robert I. Kahn Scholar in Residence Weekend with Rabbi Nancy Wiener December 6-8

Emanu El is thrilled to welcome Rabbi Nancy Wiener for its 2024 Robert I. Kahn Scholar in Residence Weekend. Rabbi Wiener is the Founding Director of the Jacob and Hilda Blaustein Center for Pastoral Counseling at HUC-JIR. Throughout the weekend, congregants are invited to join Rabbi Wiener for Shabbat worship and several adult learning opportunities.



Rabbi Nancy Wiener

Community Shabbat Dinner

Friday, December 6

Following Shabbat services at 6:00 p.m.

Join us for our Community Shabbat Dinner as we come together as a congregation and community to share Friday evening Shabbat services and a delicious meal. Registration for dinner is available online.

continued next page

Emanu El Presents: Endowment Speaker Series, ‘The Power of Words’

Emanu El is pleased to launch the 2024-2025 Endowment Speaker Series, The Power of Words, featuring authors and journalists whose work center around social justice, current events, and marginalized populations.

The Emanu El Endowment Speaker Series is made possible by Nathan Berg Lecture Series Fund, Caplovitz Lectureship Fund, Eleanor & Frank Freed Fund, and Helen & Harry Reichek Fund.

Sarah Hurwitz

Wednesday, December 11, 7:00 p.m.

Congregation Emanu El welcomes author, speechwriter, and speaker Sarah Hurwitz on **Wednesday, December 11**. Sarah’s latest book, *Here All Along: Finding Meaning, Spirituality, and a Deeper Connection to Life – in Judaism* shares profound insights Sarah discovered on everything from Jewish holidays, ethics, and prayer to Jewish conceptions of God, death, and social justice.

Sarah Hurwitz was a White House speechwriter from 2009 to 2017, starting out as a senior speechwriter for President Barack Obama and then serving as chief speechwriter for First Lady Michelle Obama. Sarah worked with Mrs. Obama to craft widely-acclaimed addresses – including her 2008, 2012, and 2016 Democratic National Convention speeches – and traveled with the First Lady across America and to five continents. Sarah also worked on policy issues affecting young women and girls as a senior advisor to the White House Council on Women and Girls.



Before working at the White House, Sarah was chief speechwriter for Hillary Clinton during her 2008 presidential primary campaign. She then joined the Obama campaign, serving as a senior speechwriter for then-Senator Obama.

Sarah has been profiled in *The Washington Post*, *People.com*, *The Boston Globe*, and *The Guardian*; interviewed on *The Today Show*, *Morning Joe*, *Amanpour & Co.*, and *NPR*; and featured in *The Forward* as one of 50 Jews who impacted American life in 2016 and 2019.

Matti Friedman

Tuesday, February 4, 7:00 p.m.

Matti Friedman is a journalist and the award-winning author of four works of non-fiction, most recently, *Who by Fire: Leonard Cohen in the Sinai*.

Matti’s work as a reporter has taken him from Israel to Lebanon, Morocco, Moscow, the Caucasus, and Washington, DC. A former *Associated Press* correspondent and essayist for the *New York Times* opinion section, he currently writes a monthly feature for *Tablet Magazine*. His writing has appeared in *Smithsonian Magazine*, the *Atlantic*, and elsewhere.



Leah Lax

Wednesday, May 8, 7:00 p.m.

Leah Lax is an award-winning author and congregant of Emanu El who has also written libretti for some of America’s top composers. Her first book, *Uncovered*, about her 30 years among the Lubavitcher Hasidim as a mother of seven and closeted lesbian went worldwide and became an opera. Her latest book, *Not From Here: the Song of America*, presents extraordinary immigrant testimonies that she says changed her life, as a Jew and as an American.



B’Yachad Interfaith Inclusion Project CONGREGANTS WANTED!

Interfaith refers to a relationship between people who practice different religions or faith. To better engage with our Interfaith congregants, we are asking the question:

How might we create an environment at Emanu El in which all people entering feel that they belong?

- Are you a couple or family who identifies as Interfaith?
- Are members in your family non-Jewish who maintain a connection to Judaism or Jewish cultural life?
- Are you interested in attending a series of small group conversations to address ways to engage with Interfaith couples and families?

If you answered YES, scan the QR code to be contacted by one of the B’Yachad Advisory Members to learn more

*Advisory Members are comprised of Emanu El Clergy, Staff, and Congregants



B’Yachad Interfaith Inclusion Project is a nine-month long program designed to help Jewish institutions and organizations more fully embrace interfaith couples and expand their supportive policies and practices.

MUSIC AT EMANUEL

CHAVA MIREL

ARTIST IN RESIDENCE

CHAVA MIREL, CELEBRATED FOR HER RICH VOCALS, LUSH HARMONIES, AND RHYTHMIC PHRASING, WILL BRING HER LOVING AND COMPASSIONATE PRESENCE TO LEAD US IN PRAYER, TEACHING AND SONG.

FRIDAY, NOVEMBER 15

6:00 PM SHABBAT EVENING SERVICE

8:00 PM WAREHOUSE SHABBAT (DOORS OPEN 7:30 PM)

SATURDAY, NOVEMBER 16

10:30 AM SHABBAT MORNING SERVICE

SUNDAY, NOVEMBER 17

10:30 AM ADULT EDUCATION: PEACE AND MINDFULNESS IN OUR ANCIENT TRADITION



VOLUNTEER CHOIR ANNUAL WINTER SHOWCASE

A MAGICAL JOURNEY OF IMAGINATION
SUNDAY, DECEMBER 15 | 5:00 P.M.

JOIN US ON A JOURNEY THROUGH IMAGINATION
CELEBRATING MAGICAL PLACES AND TIMES
PAST AND PRESENT INCLUDING MUSIC FROM PIPPIN,
ANASTASIA, CAMELOT AND THE BEATLES.
FUN FOR ALL AGES!

FOR MORE INFORMATION,
VISIT EMANUELHOUSTON.ORG/MEE



SISTERHOOD NEWS & HAPPENINGS

November 2024

Mah Jongg is BACK on its NEW Day!

Wednesday, November 13
5:30 p.m. – 8:30 p.m.



Enjoy a mah jongg evening with Sisterhood! You are welcome to play whether you are a seasoned player or a beginner. A light dinner for \$7 will be served. Registration is a must! Please register online by visiting our web calendar or by contacting the Sisterhood office at 713.529.5771, ext. 233 or sishood@emanuelhouston.org.



2025 Mah Jongg Cards On Sale NOW

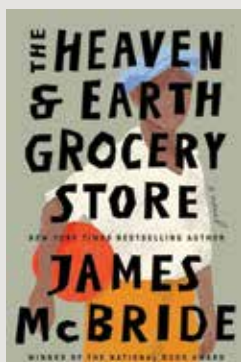
\$14 Standard Card | \$15 Large Card

All payments **MUST** be in by
January 31, 2025.

MAIL CHECK TO:

Sylvia Brody
Congregation Emanu El Sisterhood
1500 Sunset Blvd.
Houston, TX 77005
OR PAY ONLINE
Zelle: sylviabtx@gmail.com

Women's Day 2024
THE STYLISH CLOSET
Edit Your Closet and Update Your Style
FEATURING TRACEY M. JEFFERS-BINDER
OF NEIMAN MARCUS
NOVEMBER 13 10AM PROGRAM & LUNCHEON
CONGREGATION EMANU EL 1500 SUNSET BLVD, HOUSTON, TX
RSVP by November 8
emanuelhouston.org/event/stylishcloset or 713-529-5771, ext. 233
\$20 Members & Non-Members



BOOK REVIEW:

The Heaven and Earth Grocery Store by James McBride
Wednesday, November 20, 12:30 p.m.

With this story, McBride brilliantly captures a rapidly changing country, as seen through the eyes of the recently arrived and the formerly enslaved. Through this evocation, McBride offers us a thorough reminder: As these characters' stories overlap and deepen, it becomes clear how much the people who live on the margins of white, Christian America struggle and what they must do to survive. When the truth is finally revealed about what happened on Chicken Hill, the dilapidated neighborhood where immigrant Jews and African Americans lived side by side and shared ambitions and sorrows and the part the town's white establishment played in it, McBride shows us that even in dark times, it is love and community – heaven and earth – that sustain us.

Book reviews are open to public, but we do request that you RSVP online by visiting our web calendar or to the Sisterhood office at 713.529.5771, ext. 233.



**2025 Sisterhood Donor Event
Sunset BLVD Comedy Club
Saturday, April 5, 7:30 p.m.**

Congregation Emanu El Sisterhood announces a laugh-your-socks-off evening followed by a sumptuous dessert reception. Underwriting opportunities include valet parking, 10 VIP seats, and more!

For more underwriting information, contact Kathy Parven sishooddonor@emanuelhouston.org or visit the temple's web calendar at emanuelhouston.org/calendar.

Sisterhood Assembles Packages for Emanu El's Youth Alumni Program

On Friday, September 27, Sisterhood members assembled packages for Emanu El's Youth Alumni program which contained mail-in ballot applications and voting information along with other goodies. Pictured are Debby Colton,



Paulette Levine, Judy Simon, Amy Kapiloff, Barbara Kalmans and Kathy Parven. Hopefully, this information is adequate. If not, let me know what else you need.



WALDMAN FUNERAL CARE, LLC CERTIFIED AS A GREEN / NATURAL BURIAL FUNERAL ESTABLISHMENT

Certificate of Approval



WALDMAN FUNERAL CARE
meets or exceeds all standards set by the Green Burial Council
as of: August 8th, 2024

Darren Crouch
DARREN CROUCH
President, Green Burial Council Inc.

Emily Miller
EMILY MILLER
Funeral Home Compliance Specialist

W
WALDMAN FUNERAL CARE
Extraordinary Service. Compassionate Care.

www.WaldmanFuneralCare.com
713-875-4811
WaldmanFuneralCare@gmail.com

CHEVRA KADISHA OF HOUSTON AND GREEN BURIAL COUNCIL APPROVED
Texas Funeral Establishment License #4622



LOCK & LEAVE
Move-In Ready Home



TANGLEWOOD AREA | 5747 Longmont Lane

Lock and leave lifestyle in a gated community of only 24 homes. This 3-story stucco home, with an elevator, is designed with a combination of both soothing and vivid interior colors. The main living areas have high ceilings, hardwood floors and plantation shutters throughout. The primary bathroom has been remodeled with trendy blue vanities/cabinets, granite and quartz countertops, modern lighting, and a large walk-in shower. The 3rd floor houses the 4th bedroom and ensuite bathroom, which could also be used as a game room. This home has been very well maintained. Schedule your appointment today.

4 BEDROOMS | 3.5 BATHS | Offered at \$798,000 | MLS 80565087



May I help You sell Your home?

Call today to schedule an appointment.

Terry Cominsky

REALTOR-ASSOCIATE® Circle of Excellence, Hall of Fame
713.443.1610 | terry.cominsky@sir.com

Martha Turner

Sotheby's
INTERNATIONAL REALTY



Helfman Religious School

Fingerprint Mosaic Project for Sukkot

On September 22, Helfman Religious School students had the amazing experience of creating fingerprint mosaic banners with artists Isaac and Rabbi Shawna Brynjugard-Bialik. Students placed painted fingerprints into the mosaics, which will hang in the Emanu El sukkah. The final result is a wonderful reminder of the beauty we create when we come together as a community!



Consecration Family Ed

On September 29, kindergarten families and families with new 1st – 3rd graders gathered for our annual Consecration family education event. Consecration marks the beginning of a child's formal Jewish education and takes place near Simchat Torah. In preparation, families met for our Consecration class photo to learn the music they will sing at the service and to make the covers for the mini-Torahs they will receive. We enjoyed gathering together as a community!

continued next page

Outdoor High Holy Days Experience

On Sunday, October 6, families with young children gathered at the Nature Discovery Center in Bellaire for a storybook walk hosted by Helfman Religious School and the Becker School. Children enjoyed a guided walk with activities based on the seven days of creation and ended the walk with an apples and honey snack while listening to our clergy blow shofar. We had a great time!



continued next page

Consecration Family Education Event

Kindergarten families and families with new 1st-3rd graders gathered for our annual Consecration family education event. Consecration marks the beginning of a child's formal Jewish education and takes place around Simchat Torah. In preparation, families met for our Consecration class photo, to learn the music they will sing at the service, and to make the covers for the mini-Torahs they will receive. We enjoyed gathering together as a community!





Becker School Expands to Launch Infant Program in 2025

Congregation Emanu El's Early Childhood Education School to Welcome Infants Starting January 7

The Becker School is proud to announce the opening of its first-ever infant program beginning **January 7, 2025**. This new program will extend the school's reach to serve families with children as young as six weeks, offering a warm and nurturing learning environment.

With a long-standing tradition of providing high-quality, Reggio-inspired education, Becker School is known for its individualized approach to early learning, welcoming students from diverse backgrounds and meeting their unique needs. The infant program represents an exciting new chapter in the school's history, furthering its commitment to holistic, developmentally appropriate education.

"We are delighted to welcome infants to our Becker community," said Rachel Spector-McAdam, Director. "Our infant program is designed to provide the same personalized attention, nurturing care, and joyful exploration that have made Becker School a beloved institution in early childhood education."

Congregation Emanu El echoes this enthusiasm for the school's expansion. In a statement, Rabbi Oren Hayon shared, "At Congregation Emanu El, we cherish our role as a provider of meaningful, high-quality education for learners of all ages. The Becker School for early childhood education is a prized centerpiece of our educational offerings, and the launch of a new infant program in 2025 will broaden our reach to the very youngest learners in our community. All of us feel honored and grateful to be welcoming these precious new students to Becker and to introduce them to the warm, nurturing, and attentive atmosphere that makes our school so beloved by all the students and families who call this place home."

Becker School's new infant program will put an emphasis on creating a calm, safe, and stimulating environment for these youngest learners. The program will focus on developmental milestones through play, discovery, and sensory exploration, while fostering a strong connection between home and school.

LEARNING THROUGH PLAY AT **Becker**

 **Becker School**
CONGREGATION EMANU EL
1500 SUNSET BOULEVARD

NOW ENROLLING
NEW INFANT PROGRAM

6 WEEKS - 12 MONTHS
YEAR-ROUND CARE
7:30 AM - 5:30 PM

FOR MORE INFORMATION
CONTACT JUDY LAZOR
JUDYL@EMANUELHOUSTON.ORG
713.535.6400

STARTING JANUARY 7

EMANUELHOUSTON.ORG/BECKERSCHOOL

Enrollment for the infant program is now open, and interested families are encouraged to schedule a tour to learn more about Becker's enriching and supportive environment.

For more, visit emanuelhouston.org/beckerschool or contact Judy Lazor at 713.535.6400 or judyl@emanuelhouston.org.



We appreciate the thoughtfulness of those who remember and honor their friends and loved ones through their generous contributions through October 14, 2024.

ABLON FUND FOR THE CREATIVE ARTS

To provide creative arts programs

In Memory of

Barbara Black Levine

Alene Ross Levy

ACCESS FOR ALL FUND

To ensure Emanu El is a welcoming, accessible, and inclusive community

In Honor of

The Birthday of Howard Rubin – 75th

Pat & Aaron Fradkin

ALEX & WILLIE MAE GOLDSTEIN CHILDREN'S FUND

To support the educational, spiritual, physical, and emotional needs of children ages 10 and under

In Memory of

Robert F. Goldfarb

Lisa & Tommy Friedlander

AUBREY & SYLVIA FARB COMMUNITY SERVICE FUND

To support small and emerging organizations that improve life for underserved Houstonians

In Memory of

Janice Goldstein

Steven Fenberg
Marsha & Mark Klaff

Susan Farb Morris

Ellen Grabois
Linda Hayon &
Barbara Loeser

BARBARA & MARK BROOKNER CAMBERSHIP FUND

To provide scholarships for attending Jewish camps or programs

In Honor of

Dr. Jeffrey Ross – Tekiah Gedolah Shofar

The Birthday of Rabbi Oren Hayon

The Birthday of Jennifer Ross

The Speedy Recovery of Alan Reingold

The Speedy Recovery of Rabbi Roy Walter

Jennifer & Jeffrey Ross

In Memory of

Janice Goldstein

Don & Larry Barr-Meyer

Marianne Greenfield

Shelley Greenman

Jennifer & Jeffrey Ross

Elsie Jean-Higgenbotham

Don & Larry Barr-Meyer

Barbara Black Levine

Pam Lewis
The Orsak Family

Nancy Peskin

Louis Silverman

Jennifer & Jeffrey Ross

BARBARA & MILTON WAGNER BUILDING SECURITY & SAFETY FUND

To support ongoing building security and safety costs

In Memory of

Sandy Wexler

Alisha & Jonathan Risch

BECKER EARLY CHILDHOOD FUND

To provide and enhance Becker School programs

In Memory of

Nancy Peskin

Linda Hayon &
Barbara Loeser

Sandy Wexler

Marilynn & Ben Rosenthal

BECKER EARLY CHILDHOOD SCHOLARSHIP FUND

To provide Becker Early Childhood Center scholarships

A Donation

Megan & Stephen Goldfarb

In Honor of

The Birth of Louis Gray Weingarten

Dotty & Lawrence Kagan

In Memory of

Barbara Black Levine

Linda Hayon &
Barbara Loeser

BILL & JOAN SPITZ PRESIDENTIAL LEADERSHIP FUND

To strengthen the vision of Emanu El's leaders

In Memory of

Ronna Spitz

Ellen Grabois

CARY PASTERNAK CEMETERY FUND

To maintain and enhance Emanu El Memorial Park

In Appreciation of

Jan Pasternak & Renee Tappe

Dee Dee Dochen &
Paul Grossbard

CERSONSKY CEMETERY BEAUTIFICATION FUND

To maintain and enhance Emanu El Memorial Park

In Honor of

The Anniversary of Linda & Richard Stanley – 60th

Barbara Miller

The Birthday of Barbara Miller – 90th

Bitsy Proler

In Memory of

Helen & Arthur Schwartz

Rita Ginsberg

CHESTER MARCUS CAMBERSHIP FUND

To provide scholarships for attending Jewish camps or programs

In Memory of

Janice Goldstein

Shirley Burkom

CLERGY'S GOOD WORKS FUND

To provide Emanu El's clergy with funds to help individuals in need and to support organizations that benefit the community

A Donation

Howard, Lisa, & Nanci Garoon and Families

In Appreciation of

The Emanu El Clergy

David Morris

Rabbi Joshua Fixler

Robyn & Fred Steinman
In Honor of

The Emanu El Clergy

Laurie Bieber

Rabbi Pamela Silk – 20

Years of Service at

Congregation Emanu El

Ellen Grabois

The Birth of Miles Bercow Gualtieri

Phan & Robert Madorsky

The Birthday of Marlene Slobin

Linda Hayon &
Barbara Loeser

In Memory of

Kelly Berretta

Ellen Grabois

Robert F. Goldfarb

Perri & Aaron Fink
Arlyne & Maynard Gimble
Joyce & Eric Haufrect

Janice Goldstein

Karen & Jeff Basen-Engquist
Eileen Rosen Westerman

Randy Herzstein

Alexander Kauffman

Ellen Grabois

Paula Levy

Ronnie Kurtin & Gary Lew

Sandy Wexler

Eileen Rosen Westerman

EDWARD WAYNE HUNGER FUND

To feed the hungry in Houston and to support Kids Meals

In Appreciation of

The Emanu El Clergy

Debby & Murray Passo

Anne Siegel

Leda Karchmer

In Honor of

Linda Lesser & David Odle

Cheryl & Haran Levy

In Memory of

Nancy Peskin

Marlene Rubin

continued next page

FARB TZEDAKAH CANS
Tzedakah collected by congregants throughout the year that benefit the Aubrey & Sylvia Farb Community Service Fund
A Donation

Richard Gruen
Lisa & Adam Pollock
Tewlyn & Jesse Yoburn

FLORENCE & BEN BLUM LEADERSHIP FUND
To support leadership development for Emanu El lay leaders, staff, clergy, and the congregation
In Memory of
Barbara Black Levine
Julie & Drew Alexander

FREDELL LACK EICHHORN CANTOR'S MUSIC FUND
To enhance musical programming
In Honor of
Cantor Rollin Simmons
Paula Dwoskin Sitzer
The Birthday of Anna Shabtay
Gloria & Joe Pryzant

HELEN & HARRY REICHEK LIFELONG ADULT JEWISH EDUCATION FUND
To provide lifelong adult Jewish education programs
In Memory of
Janice Goldstein
Jennifer & Robert Reichek

JASON & DAVID MARCUS PLAYSPACE FUND
To maintain and enhance the playground
In Memory of
Barbara Black Levine
Rhonda & Seth Freedman

L'DOR VADOR CAMPAIGN
To expand our learning and gathering spaces and ensure a welcoming, secure, and accessible campus for all
In Appreciation of
Congregation Emanu El – Embracing the Digital Frontier to Bring People Together
Todd Kogutt

In Honor of
The Anniversary of Linda & Richard Stanley – 60th
Karen & Armin Weinberg

LILLIAN PASTERNAK MITZVAH FUND
To support mitzvah projects that improve life for Houstonians
In Memory of
Robert F. Goldfarb
Janice Goldstein
Sandy Wexler
Janie & Jon Pollock

MARIANNE GREENFIELD SISTERHOOD FLOWER FUND
To provide flowers in our worship spaces
In Honor of
The Anniversary of Linda & Richard Stanley – 60th
Bobby Frank
Barbara & Raymond Kalmans
Leda Karchmer
Elizabeth & Matt Krohn and Family
Michelle & Howard Stone, Mindy, Mark and Lainey Spellman, Alex, Christina and Julia Stone

The Birthday of Howard Rubin – 75th
Marlene Rubin & Ron Kronberg, Shari Rubin & Dennis Heinz and Family, Mindy Rubin & Nick Adams and Family, Perla & Jack Rubin, Jenn & Paul Rubin and Family
Rozanne Rubin, Alissa & Gregory Gomez and Family, Stacey & Brian Rose and Family, Ashley & Marc Rubin
Renee' & Brent Silber, Shannon & Lindsey and Families

The B'nei Mitzvah of Lawson Bieber & Owen Greenberg
The Bieber & Greenberg Families

The B'nei Mitzvah of Hannah Brook & Myles Peskin
The Peskin Family

The B'nei Mitzvah of Sadie Buxbaum & Natan Saber
The Buxbaum & Saber Families

In Memory of
Miriam & Louis Aserkoff, Kate & Irving Greenberg, Florence Kaplan, Arlene & Arthur Paul, Sheila & Michael Paul, Mark Richman, Sara & Martin Richman, and Warren Richman
The Greenberg Family
Edith Bieber, Irving Bieber, Lillie Sonenblum, Leah Wirth, and Julius Wirth

The Bieber Family
Celia & Abraham Brook, Jason Brook, Lois Brook, Dr. Marven Brook, Kenny Goldstein, Reva & Norris Nathanson, Mildred & William Peskin, Nancy & Arnie Peskin, Melva & Paul Smolensky, and Eunice & Ben Wolf
The Peskin Family
Alan Buxbaum, Toba Buxbaum, Gwen Davis, and Gilbert Davis

The Buxbaum Family
Libby Feigelson and Adine Holland
Libby & Buz Marvins and Family

Robert F. Goldfarb
Elizabeth & Matt Krohn
Norris Goodfriend
Carol & Barry Goodfriend
Marianne Greenfield
Dr. Larry J. Greenfield
Elizabeth & Matt Krohn and Family
Michelle & Howard Stone and Family
Debbie Zissman and Family

Michael Karchmer
Leda Karchmer
Barbara Black Levine
Dr. Larry J. Greenfield and Family
Essie & Elliot Linksy and Lois & Ralph Saber
The Saber Family

Craig Osteen
Dr. Larry J. Greenfield and Family
Elizabeth & Matt Krohn and Family
Fannie Poborsky
Sheila & Jerry Kaplan
Kathy & Stephen Parven
Helen Simkin
Her Loving Family
Edward Zissman
Dr. Larry J. Greenfield and Family

THE PROLER CHAPEL FUND
To maintain and enhance the Proler Chapel
In Memory of
Harry A. Bell
Maureen & Jody Proler and Shayna & Ben Proler
Barbara Black Levine
Maureen & Jody Proler

RABBI ROY & LINDA WALTER ENRICHMENT FUND
To support spiritual and cultural enrichment
In Appreciation of
Rabbi Roy Walter
Judy A. Zainfeld

In Honor of
The Birthday of Barbara Miller – 90th
Dodie Gaber
The Birthday of Marilyn Rosenthal
Donna & Phil Schmidt
The Speedy Recovery of Rabbi Roy Walter
Ellen Grabois

In Memory of
Larry Fradkin
Susan & Steve Berdinis
Carol Fradkin
Tootie & Steve Fradkin
Robert F. Goldfarb
Lauren & Alan Gordon
Shawna Murland & Tony Beardmore and Family
Janice Goldstein
Barbara & Allen Pauly
Marla Schwartz and Louise Weaver
Linda Walter
Rita Ginsberg
Sandy Wexler
Lauren & Alan Gordon

continued next page

ROBERT I. KAHN GALLERY FUND

*To maintain and enhance the Robert I. Kahn Gallery
In Honor of*

The Bat Mitzvah of Hannah Brook

Libby & Buz Marvins

ROBERT I. KAHN SOCIAL JUSTICE FUND

To fund social justice programming and support congregants' participation in social justice focused gatherings and leadership trainings

A Donation

Shelly & Michael Miller

RONALD BROCHSTEIN EARLY CHILDHOOD FUND

To enhance preschool education

In Honor of

Joseph Leon Bormaster

Marilyn & Rob Corn

SISTERHOOD FUND

To provide for the Sisterhood

In Honor of

Susie Askanase – 2024

Ernest Krautkopf

Congregant of the Year Award

The Anniversary of Linda & Richard Zoll – 60th

Ellen Grabois

The Speedy Recovery of Marilyn Nathan

Rozanne Rubin

In Memory of

Walter Breisacher

Sandy & Van Lessig

Nancy Peskin

Marci Weinstein

Ellen Grabois

SUSMAN FUND FOR FAMILY PROGRAMMING

To support programs for families

In Honor of

The Birthday of Howard Rubin – 75th

Claudia & Joel Selzer

In Memory of

Gerald Rauch

Linda Rauch Susman

TEMPLE FUND

To support the needs of the temple and to fulfill the mission of Congregation Emanu El

A Donation

Stephen Bayer

Joan Morgenstern

In Honor of

Elyse Spector Kalmans – Chair of Holocaust Museum Houston's Board of Trustees

Adam Pollock – President of Congregation Emanu El

Ellen Grabois

The Anniversary of Linda & Richard Stanley – 60th

Mallory Robinson

Aileen & Jerry Zarin

The Birthday of Patricia Rauch

Tracy Kapiloff &

Jonathan Rauch

In Memory of

Marvin Gerber

Renee Gerber, Teri & Howie Gerber, Andrea Gerber, and Gail & Norman Stalarow

Robert F. Goldfarb

Joan & Steve Dinerstein
Renee Gerber and Gail & Norman Stalarow
Barbara & Raymond Kalmans

Janice Goldstein

Lisa & Adam Pollock and Family
Joan & Ed Wolochin

Alan Haufrect

Joan & Steve Dinerstein

Barbara Black Levine

Renee Gerber, Teri & Howie Gerber, Andrea Gerber, and Gail & Norman Stalarow
Elyse & Lewis Kalmans
Randi & Scott Rubenstein
Peachy Rudberg

Alfred Osborn

Lin Turner

Ellen Grabois

Sandy Wexler

Barbara & Raymond Kalmans
Lisa & Adam Pollock and Family
Dr. Harry & Carolyn Rosenthal

Welcome Our Newest Members

We are pleased to welcome the newest and returning members to our congregational family from September 11– October 15. Please be sure to introduce yourself to our newcomers as they become a part of our community.

Brenda Abensur

Carolyn Arens & Hank Ebner

Ariana Azar-Farr & Riley Newton

Rebecca Bernstein

Ashly & Asher Braunig,

children Benjamin & Beau

Colleen & Charles Brodsky,

children Eleanor & Everett

Lisa Colton & Matt Halpin

Amy Engler

Ellen Brodsky Gaber

Amanda & Max Greenstein

Michelle & Brian Hendry,

children Abigail, Andrew, Mirren, & Sarah

Gregg Lawrence

Monica Lee & Michael Rivlin,
daughter Claire

Hannah Marlowe

Rosemary & Philip Merrill

Marisa & Alex Reby,

children Micah & Noah

Sarah Rivlin

Jason Simon

Hannah Vanveckhoven,

son Levi

Haley & Justin Vincent

Alexandra Wax & Jeffrey Olson,

children Asher, Jonah, & Tegan

Joshua Winograde & Bradon McDonald,

children Leonardo & Roberto

New members will be shared in the *Bulletin* regularly. Know someone interested in becoming a part of our community? New to town or looking to find a way to connect with Emanu El? Contact Anna Shabtay at annas@emanuelhouston.org or 713.529.5771, ext. 261.

L'DOR VADOR



FOR EMANUEL'S FUTURE



100% Congregant Participation will Help Us Cross the Campaign Finish Line!

On Kol Nidre, Rabbi Hayon shared that we are 90% of the way to our goal of \$20 million raised for the L'Dor VaDor project. We can only complete the campaign with support from our entire congregation. Now is the time to participate as we are trying to complete the campaign by **December 31, 2024**.

Rabbi Hayon shared, "We are calling the campaign to support this project L'Dor VaDor – "From Generation to Generation" – because everything we put into this work now will improve and enhance the Jewish experiences of those who will come after us."

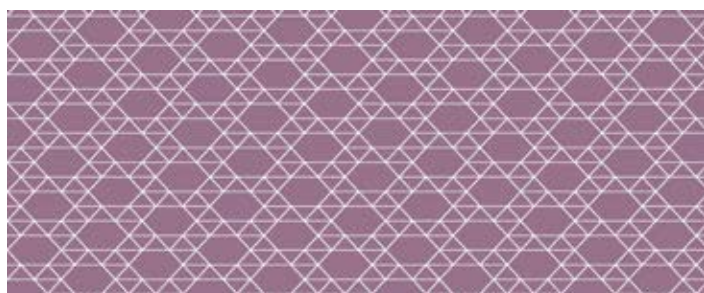
Contribute today at emanuelhouston.org/ForOurFuture.



Rabbi Hayon continued, "I want to invite you to enter this new year with a generous commitment to support in an area where we need your help. It is my sincere hope that every member of our congregation will participate at a level that is personally meaningful and bold."

Make a donation today and be a part of it!

If you'd like to discuss the L'Dor VaDor project or campaign, contact Anna Shabtay, Director of Congregational Advancement at annas@emanuelhouston.org or 713.987.3316.



Music at Emanu El – To Yearn & Return: Elul Sacred Sounds Featuring Eliana Light

On September 7, we joined together with other Houston congregations (HCRJ, Sh'ma Koleinu, and Temple Sinai) to start the month of Elul, the month leading up to the High Holy Days, in soulful song. We filled the Proler chapel with our voices, as Eliana taught us and helped us prepare our spirits for the Days of Awe ahead.



continued next page

Music in Exile Featuring the Shepherd School of Music

On September 22, our congregation and community came together for a concert highlighting the music of Jewish composers who fled persecution in Europe and immigrated to America during the early 20th century.





**Congregation
Emanu El**

1500 Sunset Boulevard
Houston, Texas 77005
T 713-529-5771 F 713-529-0703

EMANUELHOUSTON.ORG



This Bulletin is printed on recycled paper.



Congregation Emanu El

Oren J. Hayon, Senior Rabbi
Pamela B. Silk, Associate Rabbi
Joshua R.S. Fixler, Associate Rabbi
Roy A. Walter, Rabbi Emeritus
Rollin Simmons, Cantor

Beryl Chernov, Executive Director
Rachel Spector-McAdam, Director of
Becker School
Anna Shabtay, Director of
Congregational Advancement
Sharon Donia, Director of Accounting &
Finance

Adam Pollock, President
Philip Tenenbaum, Senior Vice President
Dan Gospin, Vice President of Personnel
Barry Lichman, Vice President of Education
Ivy Frank, Vice President of Committees
Dora Klaff, Vice President of Committees
Haran Levy, Treasurer
Brooke Reichek, Secretary
Stuart Gaylor, Honorary President
Judy Simon, President of Sisterhood

EMANUELHOUSTON.ORG

TOT SHABBBAT
IS BACK

DECEMBER 6TH
DINNER 5:45 PM | SERVICE 6:15 PM



LIKE US ON FACEBOOK

www.facebook.com/emanuelhouston