



# Bulletin

OCTOBER 2023 | TISHREI – HESHVAN 5784

VOLUME 78 NUMBER 1

## FROM RABBI HAYON



Lately it appears as though we are hearing news nearly every day about a climate-related disaster somewhere in the world. Wildfires, flooding, landslides, soaring temperatures and drought – it seems that every part of the globe has found itself affected and imperiled by our planet’s changing climate.

*As Jews, we are obligated to seek systemic remedies that will not only benefit ourselves, but our society and the world as a whole. Strategies for sustainable communities in a climate-unstable future cannot solely prioritize self-preservation and view the rest of our species as dispensable.*

We are right to feel anxious and concerned about the effect that the climate has on people’s health, safety and livelihood; how can we lead morally-conscious lives and not feel worried about others’ wellbeing? And yet, what is there to be done? How can we realistically hope to help provide stability and sustainability for the most vulnerable parts of our world which are facing planetary-scale disasters?

Recently, a businessman from the Netherlands undertook a massive personal project for just this purpose. Johan Huibers is a devout Christian devoted to a literalist interpretation of biblical scripture. In an interview several years ago, he gestured to a Dutch translation of the *Hebrew Bible* and announced, “I believe everything written in this book, cover to cover.”

His faith and devotion led him to undertake an unprecedented venture: he hand-built a life-sized replica of Noah’s Ark as described in the *Book of Genesis*.

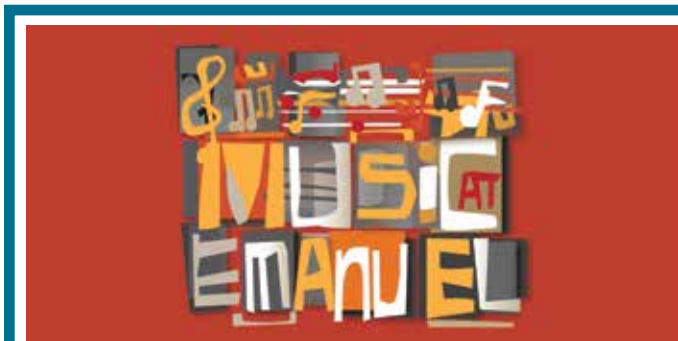
“Johan’s Ark,” as it has come to be called, is an enormous ship. It’s a 390-foot-long vessel, with a towering height

*continued on page 2*



**Simchat Torah: A Special Service and Dinner**  
**Friday, October 6**  
**Service 6:00 p.m.**  
**Dinner immediately following**

Join us for a special Shabbat as we also celebrate Simchat Torah! As part of our Shabbat service, we will unroll the Torah as a community and highlight well-known stories and moments with popular songs. Our service will be followed by a celebratory community dinner in Feld Hall. Dinner is \$5 per person and registration for the event can be found online by visiting our web calendar at [emanuelhouston.org](http://emanuelhouston.org). We hope to see you there!



**Music at Emanu El presents:**  
**The Phillip Hall Singers**  
**Sunday, October 22, 4:00 p.m.**

The 2023-2024 Music at Emanu El series kicks off in October as we welcome our first talented musician! Find out more on page 6.

of 75 feet. The ark is made from planks of American cedar and pine wrapped around a sturdy steel frame. More than 12,000 trees were needed to provide the wood to build it. In the center of the ship is a giant amphitheater, which provides access to the upper deck by a series of crisscrossing staircases. Although Huibers has not yet filled the ark with two of every species of animal, it features hundreds of stalls, feeding troughs, and gutters for the disposal of waste. He had to raise almost \$5 million to complete the project, and it took Johan and seven of his friends – notably, no professional carpenters among them – more than four years of full-time labor to construct.

“I believe we are living in the end times,” Huibers said. “We’re not conscious of it. People never are.” Drawing parallels to the story of Noah in *Genesis 6*, he told reporters that the ark he built was meant to show visitors “a reminder that our world is changing, will continue to change, as we see now because of global warming, rising sea levels, fires.”

Of course, in the Torah’s account of the great flood, God sends a deluge to wipe out most of creation because of the sinful, corrupting influence of human society. Only Noah and his family are singled out for survival because of their good character, while the rest of the human race is doomed to destruction. The Dutch workers behind the “Johan’s Ark” project appear to believe fervently that today’s climate change is the forerunner of another extinction of biblical proportions, and that the massive boat they’ve built will be the saving grace for a select few chosen survivors.

Although Huibers’s ship was constructed according to the specifications in the Torah, his approach to climate disaster is in keeping with our Jewish social values. Our spiritual tradition views the story of Noah’s Ark with a certain degree of ethical ambivalence. Yes, it’s true that Noah’s willingness to heed God’s commandments and build a giant boat to survive the flood was an act of deep faith and obedience. But, our sages point out, at no point in his dialogue with God does Noah ever question the fate of the rest of humanity or seek to convince God to spare more lives.

When we see other people’s health and safety endangered, the authentic Jewish approach is not to hoard resources only to protect ourselves and our closest family members. On this point, our Jewish tradition is clear. As Jews, we are obligated to seek systemic remedies that will not only benefit ourselves, but our society and the world as a whole. Strategies for sustainable communities in a climate-unstable future cannot solely prioritize self-preservation and view the rest of our species as dispensable. In considering new approaches to safety and sustainability, we must take the broadest, most universal view possible. After all, when it comes to the habitable future of our precious planet, we are all, so to speak, in the same boat.

*Friday night services are streamed on our website, Facebook page, Roku channel, and YouTube. Saturday morning B’nei Mitzvah services are available solely on the website and Saturday services take place in Proler Chapel as an in-person experience only. Any changes will be shared via the regular synagogue communications.*

**Simchat Torah  
Friday, October 6**

6:00 p.m., Simchat Torah Service, Barish Sanctuary  
Special Dinner immediately following, Feld Hall

**Saturday, October 7**

10:30 a.m., Simchat Torah Yizkor Service, Proler Chapel

**Sunday, October 8**

10:45 a.m., Consecration

**Shabbat B’reishit  
Friday, October 13**

6:00 p.m., Kabbalat Shabbat, Barish Sanctuary

**Saturday, October 14**

10:30 a.m., Morning Service, Proler Chapel  
10:30 a.m., Morning Service, Barish Sanctuary  
B’not Mitzvah of **Hadley Barrow**, daughter of Eric & Lisa Barrow, and **Arabella Hearn**, daughter of Robert & Lisa Hearn

**Shabbat Noach  
Friday, October 20**

6:00 p.m., Kabbalat Shabbat, Proler Chapel

**Saturday, October 21**

10:30 a.m., Morning Service, Proler Chapel  
10:30 a.m., Morning Service, Barish Sanctuary  
Bar Mitzvah of **Zachary Susman**, son of Andrew & Pamela Susman

**Shabbat Lech L’cha  
Friday, October 27**

6:00 p.m., Kabbalat Shabbat, Proler Chapel

**Saturday, October 28**

10:30 a.m., Morning Service, Proler Chapel  
10:30 a.m., Morning Service, Barish Sanctuary  
B’nei Mitzvah of **Oliver Friedman**, son of Dr. Elliott Friedman and Meagan Friedman, and **Eytan Shabtay**, son of Erez & Anna Shabtay

**Shabbat Vayeira  
Friday, November 4**

5:45 p.m., Tot Shabbat Dinner, Feld Hall  
6:00 p.m., Kabbalat Shabbat, Proler Chapel  
6:15 p.m., Tot Shabbat Service, Oshman Multi-Purpose Room

**Saturday, November 5**

10:30 a.m., Morning Service, Proler Chapel  
Shabbat Schmooze & Schmeat following morning service

---

## LIFECYCLE EVENTS

---

### WEDDING

**Iris Velasco** & **Gustavo Hernandez**

### BIRTHS

**Beau Alexander Braunig**, son of Ashly & Asher Braunig

**Simon Eli Bleiberg-Shook**, son of Elizabeth Shook & Daniel Bleiberg; grandson of Ellen Safier & Efrain Bleiberg

**Leon Lev Guttin**, son of Andrea Guttin; nephew of Daphna Guttin & Danny Beaser

**Levi Kieran Lax**, son of Larissa Wright & Reuven Lax; grandson of Leah Lax & Susan Baird, Eugene Lax, Silvie Loeber-Plant, and Betsy Fox Vance & Kenny Wright; great-grandson of Christa Loeber

### DEATHS

**Noreen Greenberg**, mother of Gail & Larry Levinson

**Bernard Rosenfeld**, father of Michelle & John Huftel, Helen Kraft, and Rene' Krnavek & Bradley Hadley; grandfather of Stacey Wallach, Traci & Michael Wallach, Michelle & Cary Kraft, Nicole & Cody Krnavek-Stauffer, Jonathan Krnavek, and Mariah Hadley; great-grandfather of Sophia Kraft and Samuel Wallach

**Joan Shafran**, mother of Nancy Shafran Gerson and Beth & Conrad Mukai; grandmother of Rachel & Zachary Shafran Edelman; great-grandmother of Jonah Edelman; step-grandmother of Emily Gerson & Jamie Hash, Annie & Josh Vallely, and Jamie & Elliot Gerson; step-great-grandmother of Everett and Danny

**Inez Taylor**, companion of Bill Taylor; mother of Barbara Schragel, Eva & John James, Bill Taylor, and Jana Charlton; grandmother of Kim & Bobby Schragel, Lindsay & Christopher Schragel, Sara James, Victoria & John Anthony, and Jackie & Erick James; great-grandmother of Collins, Wyatt, Natalee, and Ashton; sibling of Anne Joachim

#### A Notice About Bereavement Communications

Bereavement notices for our temple family are distributed with the permission of the deceased's family, and the timing of these notices is dictated by the family's request. Of course, each family grieves in its own way, and we are grateful for our congregation's patience and understanding with different families' preferences about how their loss is publicized.

### BOOK OF MEMORY

These submissions were not included in the *Book of Memory* that was distributed during High Holy Day services and are shared as part of our temple's *Bulletin*:

In Memory of

**Arnold & Leah Nitishin**

by your children and grandchildren

**Mark Kalish, M.D., Shirleen & Albert Agress, Barbara & Leonard Kalish, May & Ray Perlman, Roz & Frank Kalish, Rochelle & Sidney Baron, Betty Holtzman, Mark Webman, D.D.S., Michelle Morgan**  
by Ellen Agress Kalish; Raime and Mark Estes; Eliana, Brauston, and Canaan Estes; Alana and Alan Pulaski; Josie, Jules, and Sybil Pulaski

**Louis I. Rosenthal, Della S. Rosenthal, Morris Wm. Rosenthal, Paul G. Rosenthal, Aaron S. Rosenthal**  
by Harry and Carolyn Rosenthal and Family

**Lester Slobin; Ethel and Stanley Novak; Anne and Phil Slobin; Lil and Dan Feinstein**  
by The Slobin Family: Marlene; Scott, Pam and Ziva; Todd, Stephanie, Ava, and Sam

# Basic Judaism

## Basic Judaism

Sunday mornings, October 1 – November 12  
9:00 a.m. – 10:30 a.m.

Seeking to learn more about Judaism or refresh what you learned years ago?

Join us for the fall semester of this fabulous multi-session class. Taught by our clergy, the classes will cover the topics of Jewish history, Jewish denominations and Shabbat. No homework, tests, or quizzes. Just come and learn for the sake of learning.

Class size is limited. Pre-registration is required. To register, please contact Shira in Rabbi Silk's office at [shiram@emanuelhouston.org](mailto:shiram@emanuelhouston.org) or 713.529.5771, ext. 212.



## Adult Hebrew

Sunday mornings beginning October 1  
9:00 a.m. – 10:30 a.m. Intermediate Adult Hebrew  
10:30 a.m. – 12:00 p.m. Beginning Adult Hebrew

Two terrific yearlong adult Hebrew classes are about to begin, and you are invited to participate.

The beginning adult Hebrew class will focus on learning the Hebrew aleph bet and help students acquire the skills to decode simple words and phrases.

The intermediate adult Hebrew level class is for students who are familiar with the Hebrew letters and vowels and are ready to start stringing words together. The goal is to increase prayer reading fluency.

The course cost is \$180. Try the first couple of sessions at no cost to decide if it is a good fit for you. Pre-registration is required. Please contact Shira in Rabbi Silk's office at [shiram@emanuelhouston.org](mailto:shiram@emanuelhouston.org) or 713.529.5771, ext. 212.



## New Series – Sex, Intimacy, and Relationships: Toward a Postmodern Jewish Sexual Ethic

Beginning October 4, 12:30 p.m.

We're thrilled to announce the launch of a new monthly lunch-and-learn opportunity with Rabbi Silk. This eight-session class will meet on the **first Wednesday of the month, beginning in October.**

Sexuality and intimacy are central to our identities and experiences as human beings, yet we have few opportunities to speak about them in a frank, open, and explicitly Jewish way. Using the IYUN program from Hillel's Jewish Learning Fellowship, we will read – broadly and generously – traditional Jewish texts on intimacy, gender, sexuality, and other related topics.

Bring your lunch, we will provide dessert, beverages, and nourishment for your mind and soul.

Pre-registration is required. Please contact Shira in Rabbi Silk's office at [shiram@emanuelhouston.org](mailto:shiram@emanuelhouston.org) or 713.529.5771, ext. 212. The cost to attend is \$18, and space is limited.



## Simchat Torah Yizkor Service

Saturday, October 7  
10:30 a.m.

The congregation's observance of the Simchat Torah festival service which will include the prayers of Yizkor will take place in the Proler Chapel. No reservation needed. Those unable to join us are encouraged to tune in online as the service will be broadcast on our streaming video page (select Proler Chapel), Facebook, YouTube, and Roku.

*continued next page*



## Emanu El Young Families Playdates in the Park: School Year Series

**Sunday, October 8, 9:30 a.m. – 11:00 a.m.**  
**Discovery Green** (1500 McKinney Street)

Come connect with other Young Families while we celebrate our love of art! Please join us on the children's playground at Discovery Green for the Young Families Park Playdate: School Year Series. Come for the whole time, or just drop in when you can. Snacks, drinks and fun will be provided! If your child is five years old or younger we would love to meet up with you. As always, older siblings are welcome!

Register online by visiting our web calendar at [emanuelhouston.org](http://emanuelhouston.org).



## Morocco 2024 Informational Meeting in the Sukkah

**Thursday, October 5, 7:00 p.m.**

Our congregational trip to Morocco in March 2024 is almost at full capacity, and we have opened a waitlist for those interested in joining! Are you interested in traveling with Rabbi Hayon and your fellow congregants to the only country in the Arab world both rich in Jewish history and with a living Jewish community? Register here for our information session in the Sukkah and learn about this exciting travel opportunity.

Please RSVP in advance by visiting our web calendar at [emanuelhouston.org](http://emanuelhouston.org) so we may make appropriate accommodations for the meeting.

Find additional information regarding the itinerary and registration for the trip on our Morocco 2024 information hub, located at [emanuelhouston.org/morocco2024](http://emanuelhouston.org/morocco2024).



## Coffee with the Clergy

**Wednesday, October 18, 9:30 a.m. – 10:30 a.m.**

Join us for coffee, casual conversation, and connection with other Emanu El congregants and Rabbi Silk. We'll provide the coffee and the nosh, you bring the conversation.

## Desserts & Discussion with Dr. Steven Windmueller

**Wednesday, October 18, 7:00 p.m.**



**Dr. Steven Windmueller**

You are invited to attend a discussion of "21st Century American Judaism: Unpacking What it May Mean for Congregation Emanu El." Join us as our guest, Dr. Steven Windmueller, American scholar and Jewish communal professional, shares insights about the current and future American Jewish landscape. The discussion will be thought provoking and insightful.

Drinks and desserts will be served. This event is free and open to all. Registration for the event can be found online by visiting our web calendar at [emanuelhouston.org](http://emanuelhouston.org).

## Our clergy want to know . . .

If you or a loved one is sick or hospitalized please let us know.

Contact the synagogue at 713.529.5771, so that our rabbis can reach out and visit and be a source of strength and support.

Visiting the sick and praying for those who are ill are important and meaningful mitzvot.

*continued next page*



THE 2023-2024 MUSIC AT EMANU EL  
SERIES KICKS OFF WITH THE  
**THE PHILLIP HALL  
SINGERS**  
OCTOBER 22, 2023 | 4PM

JOIN OUR BELOVED PHILLIP HALL AND HIS LEGENDARY CHOIR AS THEY FILL OUR SPIRITS WITH THEIR SONGS. THE PHILLIP HALL SINGERS, JOINED BY EMANU EL'S VOLUNTEER AND YOUTH CHOIRS, WILL BRING US ALL TOGETHER WITH THE POWER OF MUSIC.



TICKETS ARE \$18 OR INCLUDED FOR FRIENDS OF MUSIC AT EMANU EL.  
REGISTER FOR THE EVENT AT [EMANUELHOUSTON.ORG/MEE](http://EMANUELHOUSTON.ORG/MEE).

**Bereavement Group**

Thursdays, October 26, November 2, 9, 16  
10:30 a.m. – 11:30 a.m.



The death of a loved one. Divorce. Estrangement. Job loss. Retirement. Communal tragedy. And so much more. Each is a catalyst for grief: the undesired journey that we may either embrace, despite the pain; or, that we may ignore, risking our long-term health – physical, emotional, and spiritual.

For four weeks, we invite you to come together in order to describe and process your pain in a safe, brave space. And, in doing so, may your journey through grief be both honored and eased by loving, understanding peers.

This group will be led by Rabbi Seth Stander, Community Aging Specialist at HHCI. Rabbi Stander connects community members with resources related to caregiving, aging in place, long-term care facility placement, advanced care planning, and more. Additionally, Rabbi Stander facilitates caregiver/grief support for individuals/couples/families/groups. Rabbi Stander has served as a congregational rabbi, resident and staff chaplain, and most recently on staff at the Harris County Long-term Care Ombudsman Program, advocating for the rights of facility residents and their loved ones.

Pre-registration is required; please contact Shira in Rabbi Silk's office at [shiram@emanuelhouston.org](mailto:shiram@emanuelhouston.org) or 713-529-5771, ext. 212.



**SAVE THE DATE! Tot Shabbat**

**Friday, November 4**

**Dinner: 5:45 p.m., Service: 6:15 p.m.**

November is a time of togetherness and gratitude. In that spirit, the theme for the November Tot Shabbat is Thanksgiving. Families with young children are invited to join Congregation Emanu El for this monthly event to share a special Shabbat led by a member of our clergy, geared toward families with little ones ages 0-6.

Tot Shabbat will begin in Feld Hall with an optional dinner provided by Houston Catering Concepts, and vegetarian and gluten-free options will be available. The cost of the dinner is \$5 per person. Registration for the event can be found online by visiting our web calendar at [emanuelhouston.org](http://emanuelhouston.org).

If you have any questions, contact Allison at [allisonh@emanuelhouston.org](mailto:allisonh@emanuelhouston.org).

# SISTERHOOD NEWS & HAPPENINGS

October - November 2023

## Mah Jongg 2023-2024 – Let's Play!

Registration for Sisterhood mah jongg events can be found online by visiting our web calendar at [emanuelhouston.org](http://emanuelhouston.org) or by contacting the Sisterhood office at [sishood@emanuelhouston.org](mailto:sishood@emanuelhouston.org) or 713.529.5771, ext. 233.



## Mah Jongg Afternoon

**Tuesday, October 3, 1:00 p.m. - 4:00 p.m.**

Enjoy an afternoon of mah jongg at Emanu El! Noshes are complimentary.

## Evening Mahj

**Tuesday, October 17, 5:30 p.m. - 8:00 p.m.**

Calling all mah jongg mavens! Join us for mahj and a light supper and wine for \$7.



## Knead Out Breast Cancer!

**Thursday, October 12, 6:00 p.m.**

Hone your baking skills with Sisterhood and learn to make challah with expert challah maker Phyllis Berman! Enjoy a fun-filled evening of baking, then have dinner with friends. No challah-making experience is necessary.

In conjunction with Breast Cancer Awareness Month, Dr. Kelli Ha will talk about women's health and breast cancer. Dr. Ha is a breast radiologist at Houston Methodist the Woodlands.

Couvert is \$20 for Sisterhood members and \$25 for non-members. A portion of the proceeds from this evening will go toward breast cancer research.

Please RSVP by visiting our web calendar at [emanuelhouston.org](http://emanuelhouston.org) or by contacting the Sisterhood office at 713.529.5771, ext. 233 or [sishood@emanuelhouston.org](mailto:sishood@emanuelhouston.org) by **Monday, October 9**.

**NEW  
TRADITIONS**  
SISTERHOOD JUDAICA SHOP  
CONGREGATION EMANU EL

### GIFT SHOP HOURS:

**Monday – Friday 10:00 a.m. – 2:00 p.m.**

**Sundays 9:00 a.m. – 12:00 p.m.,**  
when Helfman Religious School is  
in session.

Also available by appointment!  
713.529.5771, ext. 234.

## SAVE THE DATE! HOUSTON CENTER FOR CONTEMPORARY CRAFT Thursday, November 16, 10:30 a.m.



Join your "sisters" for a fascinating guided tour and then indulge your inner artist during a hands-on art project at the Houston Center for Contemporary Craft, located at 4848 Main Street in the Museum District. Following the tour, we will enjoy a Dutch treat lunch at a nearby restaurant. This event will be limited to 30 people, so please register early. Carpooling to the museum is recommended.

The cost is \$10, and the event is open to Sisterhood members and non-members. Register online or by visiting our web calendar at [emanuelhouston.org](http://emanuelhouston.org) or contact the Sisterhood office at 713.529.5771, ext. 233 or [sishood@emanuelhouston.org](mailto:sishood@emanuelhouston.org) by **Monday, November 13**.



# Helfman Religious School

Helfman Religious School had a busy first day of classes as we joined together for an all-school t'filah, our fifth graders made their own shofars, and our new Religious School families took part in a Consecration family education event. We look forward to being together again after the High Holy Days!







**Our 2023-2024 team of TAs!**



### **Consecration**

**Sunday, October 8, 10:45 a.m.**

Join us as we welcome our new kindergarten students (as well as new 1st-3rd graders) on their journey of Jewish learning.

### **Confirmation Retreat**

**Friday – Sunday,  
October 13 – 15  
Surfside Beach, TX**

Our annual Confirmation retreat is designed to help our 10th grade students prepare for their Confirmation service, a time when they affirm their covenant with God and their commitment to Judaism and the Jewish community. During this retreat, teens will participate in study, worship and social activities with our rabbis, educators and retreat staff.





## Emanu El Welcomes Allison Hale

We are happy to welcome Allison Hale, Programming and Engagement Associate for Congregation Emanu El. Allison is a second-generation native Houstonian and a double graduate of Sam Houston State University. She has worked in the nonprofit sector for the better part of a decade and thrives on creating a community in which all are accepted. Prior to joining Congregation Emanu El, Allison worked in youth philanthropy and engagement.

## MEMBERSHIP NEWS

We are pleased to welcome the newest and returning members to our congregational family from August 11 – September 12. Please be sure to introduce yourself to our newcomers as they become a part of our community.

**Madeline Bunch**  
**Jamie & Justin Cooper, children Jackson & Macie**  
**Judy & Mike Dane, children Layla & Mia**  
**Alexandra Demo-Dananberg & Christopher Bayer, daughter Eleanor**  
**Aaron Feldstein**  
**Erika & Samuel Frankfort, children Alexander, Celine, Matteo, & Olivia**  
**Sharon & Chad Friedensohn, children Ella & Lillian**  
**Cantor Kat Hastings**  
**Landa & Kenneth Hauser**  
**Holly Hunsicker**  
**Yarden & Bradley Lennox, children Ari & Ron**  
**Rachel & Gary Levin, children Hannah, Jack, & Madeline**  
**Lianna Louie & Bruce Thompson**  
**Daniela Morales Aseff & Adam Lawrence**  
**Marcia Olmsted**  
**Cindy & Daniel Panter, children Sara & William**  
**Esther & J.P. Pritchard**  
**Holly & Steve Radom, children Michael, Robert, & Ryan**  
**Elissa & Charles Rice, children Charlie & Vivienne**  
**Barry Riff**  
**Sarah Ringold**  
**Keith Rosen**  
**Lauren & Aaron Rosenberg, children Benjamin & Madeline**  
**Ashley Rosenfeld & Everardo Cruz-Torres, children Ava & Ethan**  
**Michael Schaffer**  
**Amy Schnoll-Gritz**  
**Julian Serebrin**  
**McKenzie Sigle**  
**Robyn Tenenbaum**

New members will be shared in the *Bulletin* regularly. Know someone interested in becoming a part of our community? New to town or looking to find a way to connect with Emanu El? Contact Anna Shabtay at [annas@emanuelhouston.org](mailto:annas@emanuelhouston.org).

## YOUR VOICE/YOUR VOTE

*Policy begins at the local level. Make your voice heard.*

### MAKE YOUR PLAN NOW. ELECTION DAY IS SOON!

- ✓ OCTOBER 27: MAIL-IN BALLOT APPLICATION DEADLINE: RECEIVED (NOT POSTMARKED)
- ✓✓ REMINDER: YOU MUST REAPPLY TO VOTE BY MAIL EVERY YEAR
- ✓ OCTOBER 23 - NOVEMBER 3: EARLY VOTING
- ✓ NOVEMBER 7, 7:00 AM - 7:00 PM: HOUSTON MAYORAL & CITY COUNCIL ELECTION
- ✓ VOTE AT ANY POLLING LOCATION

FOR MORE INFORMATION, POLLING LOCATIONS, YOUR OFFICIAL  
BALLOT, AND TO CHECK YOUR VOTER REGISTRATION, VISIT  
[EMANUELHOUSTON.ORG/EEVOTES](https://emanuelhouston.org/eevotes)



### Get Social With Us!

Did you know Congregation Emanu El is on Instagram? In addition to our active Facebook pages, be sure to follow us on Instagram to catch snap shots of happenings around the synagogue. From camel sightings to social action, a thriving youth group to clergy in action and more!

Find us on Instagram at [instagram.com/emanuelhouston](https://www.instagram.com/emanuelhouston) or if you are already a member, find us at @emanuelhouston. And yes, please feel free to “check-in” at Emanu El when you are here for events and happenings!



### Find Us On YouTube!

Looking for a one-stop shop to catch the latest worship services, musical selections, videos from our schools and more?

Find us on YouTube by searching “Emanu El Houston Video” and subscribe today!



We appreciate the thoughtfulness of those who remember and honor their friends and loved ones through their generous contributions through September 10, 2023.

**ACCESS FOR ALL FUND**

*To ensure Emanu El is a welcoming, accessible, and inclusive community*

In Memory of

**Peter Garey**

Sara Speer Selber

**Noreen Greenberg**

Robin & Irv Wanda

**Herb Weiss**

Pat & Aaron Fradkin

**ALAN GAYLOR TEACHING ASSISTANT FUND**

*To support Helfman Religious School teaching assistants*

In Memory of

**Inez Taylor**

Cynthia & Marvin Pleason

**AUBREY & SYLVIA FARB COMMUNITY SERVICE FUND**

*To support small and emerging organizations that improve life for underserved Houstonians*

In Honor of

**The Anniversary of Susan & David Askanase**

Marilynne & Alford Bleeker

In Memory of

**Noreen Greenberg**

Laurie & Jeff Bricker

**Relda Finger Hoffer**

**Maxine Reingold**

**Gayle Rockoff**

**June Silverblatt**

Marilynne & Alford Bleeker

**BECKER EARLY CHILDHOOD FUND**

*To provide and enhance Becker School programs*

In Honor of

**The Speedy Recovery of Leslie Slatko**

Sheila & Jerry Kaplan

In Memory of

**Gayle Rockoff**

Shawna Murland & Tony Beardmore

**BECKER EARLY CHILDHOOD SCHOLARSHIP FUND**

*To provide Becker Early Childhood Center scholarships*

In Memory of

**Gayle Rockoff**

Paulette & Mel Levine

**Inez Taylor**

Paula & Irving Pozmantier

**CARY PASTERNAK CEMETERY FUND**

*To maintain and enhance Emanu El Memorial Park*

**A Donation**

Vera Balog

**CERSONSKY CEMETERY BEAUTIFICATION FUND**

*To maintain and enhance Emanu El Memorial Park*

In Memory of

**Maxine Reingold**

Joy & Dickie Pulaski

**Helen & Arthur Schwartz**

Rita Ginsberg

**CLERGY'S GOOD WORKS FUND**

*To provide Emanu El's clergy with funds to help individuals in need and to support organizations that benefit the community*

**A Donation**

Susan & Stanley Schneider

In Appreciation of

**Shira Moses**

Linda & Richard Zoll

**Rabbi Pamela Silk**

Michaele & Michael Brown

Julia Goldman

Wendy Rico & Scott

Folloder

In Memory of

**Peter Garey**

Annette Robertson  
Linda & Richard Zoll

**Noreen Greenberg**

Karen Lee

**Steven Mayer**

Marilyn "Sissy" Waldman

**Sadye Rosmarin**

Marie Brochstein

**Helen & Arthur Schwartz**

Rita Ginsberg

**Joan B. Shafran**

Paula & Irving Pozmantier

**Keith Silverblatt**

Carol & Barry Goodfriend

**Herb Weiss**

Gail & Frank Little

**ED WULFE YOUTH LEADERSHIP FUND**

*To support programming to train young leaders*

In Honor of

**The Birthday of Lorraine Wulfe - 80th**

Ann Plantowsky  
Marjorie Rosenthal

In Memory of

**Peter Garey**

Lorraine Wulfe

**EDWARD WAYNE HUNGER FUND**

*To feed the hungry in Houston and to support Kids Meals*

In Honor of

**The Birthday of Norma Tucker**

Carolyn Solar

In Memory of

**Peter Garey**

Susie & David Askanase  
Alice & Ralph Berkman

**Relda Finger Hoffer**

Paula & Irving Pozmantier

**ESTHER SHELBY FELLOWSHIP FUND**

*To provide food and refreshments for Emanu El programs that bring members closer to the congregation and each other*

In Memory of

**Inez Taylor**

Aliza & Jason Plotkin

**FLORENCE & BEN BLUM LEADERSHIP FUND**

*To send Emanu El leadership to URJ Biennials and underwrite leadership programs and speakers*

In Memory of

**Noreen Greenberg**

**Gayle Rockoff**

Myra Lipper

**FREDELL LACK EICHHORN CANTOR'S MUSIC FUND**

*To enhance musical programming*

In Honor of

**Cantor Rollin Simmons**

Michaele & Michael Brown

In Memory of

**Steven Goldman**

Anonymous

**HAROLD REINGOLD RELIGIOUS SCHOOL FUND**

*To enhance Helfman Religious School programs*

In Memory of

**Maxine Reingold**

Sylvia & Steven Brody

*continued next page*

**MARIANNE GREENFIELD  
SISTERHOOD FLOWER  
FUND**

*To provide flowers in our  
worship spaces*  
In Honor of

**The B'nei Mitzvah of  
Levi Blumrosen & Eli  
Sussman**

Pat & Howard Sussman,  
and Jason, Laura,  
Sydney, Aidan, & Max  
Buchman  
The Heyen-Blumrosen  
Family  
The Sussman Family

**The B'nei Mitzvah of Jesse  
& Shane Gordon**

The Gordon Family

In Memory of

**Betty Lou Blumrosen and  
Orlin & Dortha Heyen**

The Heyen-Blumrosen  
Family

**Jean Duval**

Dr. Larry J. Greenfield  
and Family  
Elizabeth & Matt Krohn  
and Family  
Linda & Richard Stanley,  
Jessica & Erik Teegerstrom,  
Sam Kagan, Jack Kagan,  
and Ryan Stanley

**Minnie Duval**

Elizabeth & Matt Krohn  
and Family

**Frances & Nathan  
Garfinkle, Sarah & Irvin  
Maleh, Alvin Savage,  
and Sally & Joseph  
Yosowitz**

The Gordon Family

**Dan B. Gerson**

Paula & Irving  
Pozmantier

**Joe B. Gerson**

Dr. Larry J. Greenfield  
and Family

**Murray Getz**

Philip Getz

**Michelle Roth Glauben**

The Glauben & Roth  
Families

**Marianne Greenfield**

Jeremy and Maxwell  
Balkin  
Shana & Andy Balkin and  
Family

Meredith, Seth, & Emily  
Bleiler  
Mallory, Harrison, &  
Sadie Botwin  
Heather, Doug, Hannah,  
& Justin Fishman  
Dr. Larry J. Greenfield  
Elizabeth & Matt Krohn  
and Family  
Suzie, Jonathon, &  
Mason Reckles  
Linda & Richard Stanley,  
Jessica & Erik  
Teegerstrom, Sam Kagan,  
Jack Kagan, and Ryan  
Stanley  
Michelle & Howard  
Stone, Mindy & Mark  
Spillman & Lainey, and  
Christina & Alex Stone  
Debbie Zissman and  
Family  
Tamara, Eric, & Escher  
Zissman

**Max Greenfield**

Elizabeth & Matt Krohn  
and Family

**Taghi Hajizade**

Dr. Larry J. Greenfield  
Debbie Zissman and  
Family

**Ed Krohn**

Elizabeth & Matt Krohn  
and Family

**Fannie Poborsky**

Kathy & Stephen Parven

**Inez Taylor**

Jane Eixmann

**Edward Zissman**

Elizabeth & Matt Krohn  
and Family

**RABBI ROY & LINDA  
WALTER ENRICHMENT  
FUND**

*To support spiritual and  
cultural enrichment*

In Honor of

**The Birthday of Allen  
Applebaum – 80th**

The Applebaum Family

**The Birthday of Helen &  
Martin Marks**

Joy & Harris Jacobs

**The Birthday of Carol Wilk  
– 80th**

Judy & Al Osborn  
Lindsay, Jeffrey, Jordan &  
Brett Steinberg

In Memory of

**Peter Garey**

Carol & Barry Goodfriend

**Noreen Greenberg**

Lauren & Alan Gordon  
Janie & Jon Pollock

**Gayle Rockoff**

Mallory Robinson  
Irene Weingarten

**Inez Taylor**

Patti & Michael  
Dennenberg

**RELIGIOUS SCHOOL  
SCHOLARSHIP FUND**

*To provide Helfman  
Religious School  
scholarships*

In Memory of

**Gayle Rockoff**

The Murland Family

**RICKY SCHNURR  
CAMPERSHIP FUND**

*To provide Greene Family  
Camp scholarships*

In Memory of

**Noreen Greenberg**

Cindy & David Senior

**RIVA BURSTEN CARING  
CONGREGATION FUND**

*To support programs  
that assist people in the  
community*

In Honor of

**Pat & Aaron Fradkin**

Lou & Herb Mizis

**ROBERT I. KAHN SOCIAL  
JUSTICE FUND**

*To send congregants  
to the Consultation on  
Conscience at the Religious  
Action Center*

In Memory of

**Inez Taylor**

Al Kahn

**SISTERHOOD FUND**

*To provide for the  
Sisterhood*

In Memory of

**Noreen Greenberg**

Betty Babendure

**Shirley Schnoll**

Sylvia & Steven Brody

**Inez Taylor**

Steve Baumel  
Diane Lewis  
Eva Loeb  
Judy Myers  
Claudia & Joel Selzer  
Sharon & Ira Wadler

**SUSMAN FUND FOR  
FAMILY PROGRAMMING**

*To support programs for  
families*

In Memory of

**Lila Rauch**

**Richard Susman**

Linda Susman

**TEMPLE FUND**

*To support the needs of the  
temple and to fulfill the  
mission of Congregation  
Emanu El*

In Honor of

**The Birthday of Carol Wilk  
– 80th**

Sheila & Jerry Kaplan  
Dr. Joel & Frances  
Steinberg

**The Speedy Recovery of  
L.A. Train**

Sheila & Jerry Kaplan

In Memory of

**Peter Garey**

Diana Brackman  
Patty & Bill Turney

**Noreen Greenberg**

Alyse & Robert Caplan

**Relda Finger Hoffer**

Lynn & Doug Waldman

**Gayle Rockoff**

Holly Hunsicker  
Cheryl & Haran Levy  
David Odle

**Shirley Schnoll**

Dee Dee & Bob Halpin

**Richard Westerman**

Kathy & Garey Marks

BETTER TOGETHER  
**PICKLEBALL**  
**JEWISH SINGLES OVER 50**

**CONGREGATION BETH YESHURUN**

**REGISTER FOR OPEN PLAY**  
**BEGINNERS WELCOME. PADDLES**  
**PROVIDED OR BRING YOUR OWN.**

**PLEASE ENTER COURTS THROUGH SCHOOL**  
**ENTRANCE**

**SUNDAYS**  
 5/21, 6/11, 6/25, 8/20, 9/10,  
 10/15, 10/29, 11/5, 11/19,  
 12/3, 12/17

**12:00 P.M. - 2:00 P.M.**  
**MUST ARRIVE BY 1PM**

**TO REGISTER PLEASE VISIT:**  
[BETH-ISRAEL.SHULCLOUD.COM/CALENDAR](http://BETH-ISRAEL.SHULCLOUD.COM/CALENDAR)

**QUESTIONS?**  
[BETTERTOGETHER@BETH-ISRAEL.ORG](mailto:BETTERTOGETHER@BETH-ISRAEL.ORG)

*Wishing You A  
 Happy & Healthy  
 New Year!*

**If you need a Real Estate  
 professional - I am here to help.**

*Let me make your Real  
 Estate dreams come true.*

**Terry  
 Cominsky**  
 REALTOR-ASSOCIATE®  
 Circle of Excellence, Hall of Fame  
 713.443.1610  
[terry.cominsky@sir.com](mailto:terry.cominsky@sir.com)

**Martha  
 Turner** | **Sotheby's**  
 INTERNATIONAL REALTY

*Thank You to the community for  
 supporting us over the last 20 years*

**HOUSTON JEWISH FUNERALS**  
 Jewish-owned and operated since 2001

**SCAN OUR QR CODE FOR A MESSAGE FROM OUR STAFF** **WATCH NOW**

*Jewish Heritage... Jewish Traditions... Jewish-owned and operated*  
**Contact us today at (713) 666-0257 | [HoustonJewishFunerals.com](http://HoustonJewishFunerals.com)**



## TEN YEARS SERVING OUR FAMILIES FROM MY HEART

At your time of need, we provide compassionate support and expert guidance. We're here for you. We'll visit with you any time. Your place or ours.

We focus on the details, so that you can focus on your family.

[www.WaldmanFuneralCare.com](http://www.WaldmanFuneralCare.com)  
713-875-4811

CHEVRA KADISHA OF HOUSTON APPROVED  
Texas Funeral Establishment License #4622



Syd Waldman  
Funeral Director

# DO YOU...

- like helping others?
- have a talent or skill to share?
- enjoy being part of a vibrant community?
- want to feel more connected as a member?

*The Volunteer & Committee Coordination Group is here to help match YOUR passions and interests with the variety of volunteer opportunities at Emanu El*

## GET INVOLVED



[EMANUELHOUSTON.ORG/GETINVOLVED](http://EMANUELHOUSTON.ORG/GETINVOLVED)



# GIVE SMART

## Leverage Your Giving



**Did you know that you can support Congregation Emanu El in a tax smart way?**

Since 1985, the Houston Jewish Community Foundation has advanced the philanthropic needs of our local community by guiding donors to give meaningfully through donor advised funds, legacy giving, appreciated stock, IRAs, and more.



**Scan the QR Code to visit [hjcf.org](http://hjcf.org)**

Contact us for more information  
[info@hjcf.org](mailto:info@hjcf.org) | 346-699-HJCF (4523)



This Bulletin is printed on recycled paper.



Congregation Emanu El

**Oren J. Hayon**, Senior Rabbi  
**Pamela B. Silk**, Associate Rabbi  
**Joshua R.S. Fixler**, Associate Rabbi  
**Roy A. Walter**, Rabbi Emeritus  
**Rollin Simmons**, Cantor  
**Anna Shabtay**, Director of  
Congregational Advancement  
**Erika Roberts**, Interim Becker Principal  
**Stefani Carlson**, Director of  
Lifelong Learning

**Stuart Gaylor**, President  
**Adam Pollock**, Senior Vice President  
**Dan Gospin**, Vice President  
**Dora Klaff**, Vice President  
**Barry Lichman**, Vice President  
**Ben Miller**, Vice President

**Philip Tenenbaum**, Treasurer  
**fredi Bleeker Franks**, Secretary  
**Jeri Amundsen**, Honorary President  
**Carol Sue Zions**, Sisterhood Co-President  
**Judy Simon**, Sisterhood Co-President

EMANUELHOUSTON.ORG

### 5784 High Holy Days Videos and Experiences Available Online

High Holy Days videos and experiences are available on YouTube and our website's "Watch" page.

All services, worship experiences, sermons, and multiple musical clips are available from our recent High Holy Days services.

Want to watch something you enjoyed live or catch a moment you heard about from a family member or friend? Visit Emanu El's YouTube channel and search for the "High Holy Days 2023" playlist.



LIKE US ON FACEBOOK  
[www.facebook.com/emanuelhouston](http://www.facebook.com/emanuelhouston)