



Bulletin

January 6, 2022 | 4 Sh'vat 5782

VOLUME 76 NUMBER 4

FROM RABBI HAYON



The 15th chapter of the *Book of Exodus* recounts the moment when the Israelite nation, newly freed from Egyptian slavery, masses on the far side of the Red Sea and burst into grateful song to God.

According to the most straightforward translation of the Hebrew text, the verse suggests that Moses and the Israelites sang the song together in unison.

“Moses and the Israelites sang this song to ADONAI: ‘I will sing to the Eternal, for God has triumphed gloriously...’”
(Exodus 15:1)

But according to Yosef ben Yitzhak Bechor Shor, a biblical commentator from 12th century France, the verse should be understood differently. In his gloss on Exodus 15:1, he suggests that the Hebrew word “*yashir*” ought to be read as a causative verb, and so the true sense of the verse would be something like “*Moses got the Israelites to sing this song...*”.

Bechor Shor’s novel reading of the verse adds a new dimension to our understanding of Moses’ compelling leadership skills: in his view, one of the things that made Moses an exceptional mentor was that he was able to lead

continued on page 2

Shabbat Shirah: A Sabbath of Song Celebrating

Barbara Loeser (hybrid)

Friday, January 14, 6:00 p.m.



Make plans to join us on Shabbat Shirah, the Sabbath of Song. As our Torah portion and the accompanying extraordinary music highlight Moses and Miriam

leading the Israelites across the Red Sea and out of Egypt, we will add in our own celebratory tune to honor Barbara Loeser as she steps down after more than 45 years of contribution to musical and educational programming at Emanu El.

A Oneg will take place following services.

If you are unable to join us in person,

continued on page 3



Pictured from left to right: Director of Congregational Advancement Anna Shabtay, Rabbi Oren Hayon, David Barish, Jacquelyn Barish, Marvin Barish, president Jeri Amundsen, senior vice president Stuart Gaylor.

Thank You to the Barish Family!

Historic \$3 million gift from the Barish Family to endow the Shirley Barish Memorial Israel Experience

The Shirley Barish Memorial Israel Experience is consistently a highlight for the students enrolled in the Helfman Religious School. Members of the 10th and 11th grade classes travel to Israel for an extended trip with support from the Shirley Barish Memorial Israel Experience Fund.

Students who become B’nei Mitzvah at Congregation Emanu El and continue their studies through the 12th

continued on page 2

WORSHIP SERVICES

Locations are listed below for those seeking to use the streaming video portal on our website or for those attending in-person. Any changes will be shared via the regular synagogue communications.

Our Friday night services are streamed to our website, Facebook page, Roku channel, and YouTube. Our Saturday morning B'nei Mitzvah services are available solely on our website and our Saturday services offered in the Proler Chapel are offered as an in-person experience.

Shabbat Bo **Friday, January 7**

6:00 p.m., Kabbalat Shabbat, Barish Sanctuary

Saturday, January 8

10:30 a.m., Shabbat Morning Service, Barish Sanctuary
Bat Mitzvah of **Ava Silk**, daughter of Rabbi Pam & Jeff Silk

Shabbat B'shalach **Friday, January 14**

6:00 p.m., Kabbalat Shabbat, Barish Sanctuary
Shabbat Shirah: A Sabbath of Song Celebrating Barbara Loeser

Saturday, January 15

10:30 a.m., Shabbat Morning Service, Proler Chapel

Shabbat Yitro **Friday, January 21**

6:00 p.m., Kabbalat Shabbat, Proler Chapel

Saturday, January 22

10:30 a.m., Shabbat Morning Service, Proler Chapel
10:30 a.m., Shabbat Morning Service, Barish Sanctuary
B'not Mitzvah of **Clara Lurie**, daughter of Sarah & Seth Lurie and **Charlotte Garrison**, daughter of Mollie & Simon Trubek

Shabbat Mishpatim **Friday, January 28**

6:00 p.m., Kabbalat Shabbat, Proler Chapel

Saturday, January 29

10:30 a.m., Shabbat Morning Service, Proler Chapel
10:30 a.m., Shabbat Morning Service, Barish Sanctuary
B'nei Mitzvah of **Julian Farber**, son of Karen & Stephen Farber and **Dylan Kramer**, son of Jennifer & Adam Kramer

Shabbat T'rumah **Friday, February 4**

6:00 p.m., Kabbalat Shabbat, Proler Chapel

Saturday, February 5

10:30 a.m., Shabbat Morning Service, Proler Chapel

Shabbat T'tzaveh **Friday, February 11**

6:00 p.m., Kabbalat Shabbat, Proler Chapel

Saturday, February 12

10:30 a.m., Shabbat Morning Service, Proler Chapel
10:30 a.m., Shabbat Morning Service, Barish Sanctuary
B'not Mitzvah of **Lexie & Madison Rose**, daughter of Deborah & Myles Rose

REMINDER: All Friday night Shabbat services are video streamed on our website as well as our Emanu El Facebook page, YouTube channel and Roku channel. Our Saturday morning Proler Chapel service is not streamed. Saturday morning services featuring a B'nei Mitzvah are streamed on our website and Roku channel.

FROM RABBI HAYON *continued from page 1*

thousands of untrained volunteers in song.

If you've ever served in a position of musical leadership – or if you've been led in song by a particularly skilled conductor or songleader – then you will know how insightful this medieval commentary really is. To lead others in music, particularly music dedicated to glorifying God, is a unique and precious blessing indeed.

This month brings a number of special opportunities to acknowledge the deep richness of the music program here at Emanu El. As Cantor Simmons reminds us in her column on page 12, we hope that you will join us to offer thanks and blessing to our beloved Barbara Loeser as we celebrate her retirement on January 14. We also hope that during the weeks and months ahead you will make

a point of coming to acquaint yourself with some of the wonderful leaders of musical prayer whom you may not yet have had the opportunity to meet. I look forward to listening – and singing – along with you.

THANK YOU TO THE BARISH FAMILY!

continued from page 1

grade are eligible for incredibly generous stipends to participate in the biennial trip. Marvin Barish and family established the fund in memory of Shirley Barish and recently contributed \$3 million to endow the fund in perpetuity. Marvin's incredible generosity will ensure that Emanu El students for generations to come will be dedicated advocates on behalf of Israel and strengthen the bonds between Israel and Diaspora Jewry.

Marvin told us, "I wish lots of prosperity and success for Emanu El for years and years to come. I am so happy to support the children of Emanu El in this way."

SHABBAT SHIRAH: A SABBATH OF SONG CELEBRATING BARBARA LOESER

continued from page 1

this Shabbat experience will be streamed online through our streaming video page (Barish Sanctuary) in addition to our Facebook, Roku, and YouTube platforms.

This program is generously funded by the Fredell Lack Eichorn Cantor's Music Fund and the Julius Nathan Music Fund.

Participate in Helping Us Create a Keepsake for Barbara Loeser

As Rabbi Hayon pointed out in his recent letter to the congregation, "Barbara has held an admirably wide array of professional responsibilities. During her long career, in addition to her musical leadership on and off the bimah, she has overseen the education of countless students, and the creation and execution of innovative synagogue programming...."

You can share your good wishes and treasured memories with Barbara on the Emanu El website. A direct link can be found in the synagogue's weekly Wednesday communications.

Your notes will become a "Keepsake Book" for Barbara as a reminder of all the lives she has touched with her kindness, her talents and her love of Judaism.

If you would like your notes and memories to be included in the Keepsake Book, **please respond by Friday, January 7.**

*Caren Cowan
Chair of the Barbara Loeser Celebration*

Our clergy want to know . . .

If you or a loved one is sick or hospitalized please let us know.

Contact the synagogue at 713.529.5771, so that our rabbis can reach out and visit and be a source of strength and support.

Visiting the sick and praying for those who are ill are important and meaningful mitzvot.

LIFECYCLE EVENTS

BIRTHS

Paige Millie Pauly, daughter of Dana & Lane Pauly; granddaughter of Barbara & Andy Macklin, Richard Wolf & Irene Weingarten, Bella Rae Pauly

Aaron David Weingast, son Melissa & Jay Weingast; grandson of Francene & Jeremy Weingast, Barbara & Hank Fasteau; great-grandson of Rosalie Sellman

WEDDINGS

Carin Brody Davidson & Evan D. Collins

Tori Hicks & Evan Klaff

DEATHS

Michael Ginsberg, brother of Mallory Robinson, Bailey & Gary Gurwitz

Doris Harris, mother of Vicki Cook and Ronald Mock; grandmother of Joel Steele, Casey Steele Wisneski, Heather Steele Zamarano, Brendan Cook, Mackenzie Cook; sister of Joyce Schneider

Dorothy Jacobs, mother of Sharon & Sidney Mellon, Diana & Morris Narunsky; grandmother of Alison & Scott Mellon, Jena Hirschbein & Michael Mellon, Lindsey & Jakob Ben-Ezra, Tasha & Harold David Narunsky, Veronica & Andrew Narunsky; great-grandmother of Shoshana, Zoe, Serena, Ruby, Nomi and Julia; sister of Joani & Albert Shapiro, Ida Rose Shapiro

Robert Smith, husband of Lauren Smith; father of Kristen Smith; son of Roy Smith; brother of Elizabeth & Bruce Gillespie, Bill Smith

Lyle Wm. Spielman, father of H. Keith Spielman, Neal Spielman

Linda Stein, wife of Marvin Stein, mother of Cindy & Larry Stein, Ellen Stein; grandmother of Matthew and Connor Stein

A Notice About Bereavement Communications

Bereavement notices for our Temple family are distributed with the permission of the deceased's family, and the timing of these notices is dictated by the family's request. Of course, each family grieves in its own way, and we are grateful for our congregation's patience and understanding with different families' preferences about how their loss is publicized.

Programming at Emanu El

As Congregation Emanu El gradually migrates back to a robust program calendar, we are currently able to offer three kinds of programs to our community: in-person, online-only and hybrid. The definitions of these categories are as follows:

- **IN-PERSON.** Available for in-person attendance only. These offerings will not be livestreamed or broadcast for online audiences.
- **DIGITAL.** Designed for viewing and participation on Zoom or on one of our digital platforms (Facebook, YouTube, etc.) only. Please note that, for privacy reasons and contractual considerations, some of our digital programs will be available for live viewing only and will not be accessible for re-broadcast after the event takes place.
- **HYBRID.** These programs include opportunities for attendees to participate in person or digitally, via Zoom or one of our live-streaming platforms.

When reviewing our program calendar, please make note of any registration requirements (RSVPs may be required), and whether the offering you wish to attend will be offered in-person, digitally, or in a hybrid format. Taking a few moments to confirm these details will help ensure the excellence of our programming and will help us to provide a positive experience for all participants.

If you have a suggestion for a program, or any questions about the details above, please contact Program Director Jason Plotkin at jasonp@emanuelhouston.org or 713.535.6414.

American Idol/A Melton Class taught by Rabbi Hayon (in-person) Thursdays at 7:30 p.m. starting on Thursday, January 27

Congregation Emanu El in collaboration with the Evelyn Rubenstein Jewish Community Center of Houston and created by the Florence Melton School of Adult Jewish Learning will offer a class entitled 'American Idol' taught by Rabbi Hayon.

The prohibition on idol-worship has always been a central idea in Judaism. But what exactly does this mean in today's world, where the practice of worshipping inanimate objects is very rare?

Together, we will explore a wide array of sources, from the Bible to Jewish law codes to contemporary examples of "idolizing" athletes and celebrities. No background in Jewish studies is required, but you must come equipped with an open mind and a sense of curiosity!

The class will run seven weeks starting on **Thursday, January 27** and concluding on **Thursday, March 10**. To register, visit erjcchouston.org.

Classics – Save the Date (in-person) Friday, January 28, after 6:00 p.m. Shabbat worship

Kick off 2022 with the Classics, Emanu El's social group for 50s and 60s members (singles and couples welcome).

Join us for Shabbat services in the Proler Chapel and then head out after for dinner nearby.

Please mark your calendars and watch your email for more information and including registration. The event will be at a local restaurant with separate checks. We look forward to seeing you there.

Save the Date for Tot Shabbat (in-person) Friday, February 4

Families with young children are invited to join Congregation Emanu El for our monthly Tot Shabbat to share a special Shabbat led by a member of our clergy and geared toward families with little ones ages 0-6.

The February Tot Shabbat will mark the debut of a new itinerary for the evening based on the survey results from a December inquiry of our families with young children and our Becker School families. As of press time, this schedule was not finalized.

Stay tuned to your synagogue communication for more information surrounding this Tot experience and make sure to be on the lookout for how you can register online on our web calendar at emanuelhouston.org.

For more information on our Tot Shabbat programming, please contact Jason Plotkin at jasonp@emanuelhouston.org or 713.535.6414.

This program is generously underwritten by the Alex & Willie Mae Goldstein Children's Fund and the Susman Fund for Family Programming.

Shabbat Schmooze & Schmear (in-person) First Saturday of the Month following 10:30 a.m. Shabbat Morning services

Join us for our warm, participatory and Hamish Shabbat morning Proler Chapel service and then stay for a chance to schmooze and enjoy a schmear.

Mark your calendar and plan to attend an engaging and spiritual prayer service on the first Shabbat

continued next page

morning of the month at 10:30 a.m. and stay after services for a nosh.

Try something new in 2022 with our Shabbat Schmooze & Schmears that will take place on the first Saturdays from February through May. The dates are **February 5**, **March 5**, **April 2** and **May 7**.



“Better Together” Cultural Impact of Music from the 60s (in-person) Saturday, February 19, 7:30-9:30 p.m.

Calling all 50s and 60s Jewish singles in the Houston area!

“Better Together” – a community-wide Houston Jewish singles initiative for those in their 50s and 60s – is back at it for another fun, social evening.

Join us at Beth Israel, 5600 North Braeswood Blvd., for latest event to learn about the ‘*Cultural Impact of Music from the 60s*’ with Aaron Howard. The evening will also feature cocktails and food from the 60s as well as dancing.

There is no cost for the event but pre-registration is required. To register, visit the calendar on our emanuelhouston.org website.

To receive more information or suggest future programs for Better Together, please contact bettertogether@beth-israel.org. Prior programs have included a trip to Pinstripes, a Kids Meals social action project and a “booze cruise.”

The sponsoring organizations and synagogues include Congregation Beth Israel, Congregation Beth Shalom of the Woodlands, Congregation Beth Yeshurun, Congregation Brith Shalom, Congregation Emanu El, Congregation Shma Koleinu, the Evelyn Rubenstein Jewish Community Center, HCRJ and the Jewish Federation of Greater Houston.



Yom Limmud 2022 (hybrid) Sunday, February 20

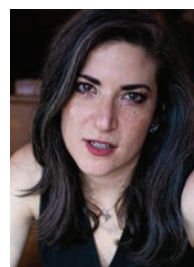
Yom Limmud (Day of Learning) provides a unique opportunity for Jews from all denominations and walks of life to connect with unique Jewish stories and culture from around the globe through music, art, cooking, and general education.

This year’s Yom Limmud will be held at Beth Yeshurun (4525 Beechnut).

Yom Limmud is sponsored by the Jewish Federation of Greater Houston in partnership with the Barish Family/The Chair King.

A complete schedule and an opportunity to pre-register for Yom Limmud will become available in the coming weeks. For more information, visit houstonjewish.org/yomlimmud.

How (and Why) Journalism Gets it Wrong with Batya Ungar-Sargon (in-person) Tuesday, February 22, 7:30 p.m.



Batya Ungar-Sargon

Congregation Emanu El will welcome Dr. Batya Ungar-Sargon to the Barish Sanctuary as part of its Endowment Speaker Series. Dr. Ungar-Sargon’s remarks will be entitled “*How (and Why) Journalism Gets it Wrong.*”

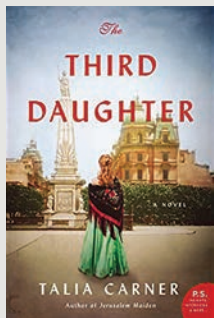
Ungar-Sargon is Deputy Opinion Editor of *Newsweek* and author of the recently released book *Bad News: How Woke Media Is Undermining Democracy*, which explores the recent ideological shifts in mainstream media and their effects across the broader landscape of American democracy.

A contributor to Rabbi Hayon’s recent book, *Inscribed: Encounters with the Ten Commandments*, Ungar-Sargon previously served as Opinion Editor of the *Jewish Forward*, the largest Jewish media outlet in America. She has written extensively for the *New York Times*, the *Washington Post*, *Foreign Policy* magazine, the *New York Review of*

continued on page 15

Sisterhood News & Happenings

January – March 2022



BOOK REVIEW:

The Third Daughter

by Talia Carner

THURSDAY, JANUARY 13, 7:00 PM (digital)

Sisterhood hosts bi-monthly book reviews throughout the year that are open to the public. January's book review will be led by our congregant, Susana Paoloski.

PLEASE NOTE: This book review will be held by Zoom, and the information to access will be emailed ahead of time to those who register.

A summary of our January book selection can be found below:

The late 1800's find fourteen-year-old Batya in the Russian countryside, fleeing endless programs with her family. Desperate her father leaps at the opportunity to marry her to a worldly, wealthy stranger who promises that Batya will have an easy life in America.

Batya's new "husband" does indeed bring her to America: Buenos Aires, a vibrant growing city. But instead of becoming a wife, Batya is one of thousands of women tricked and sold to a brothel. As the years pass, Batya holds on to one dream: to buy herself out of prostitution and bring her family to America. When she gets a dangerous but possibly life-saving opportunity -to help bring down the criminal network that has enslaved so many young women-she agrees to help. But will saving herself mean abandoning her family to the anti-Semitism that plagues Russia?

A powerful story of finding strength in the face of danger and hope in the face of despair. *The Third Daughter* brings to life a dark period of Jewish history and gives a voice to victims whose truth deserves to finally be told.

The historical events in the novel actually took place between 1892 and 1910; however, the pimps' union, Zwi Migdal, operated with impunity for seventy years.

To help us plan for our book reviews and to receive communications about future book reviews, we ask that you kindly **RSVP by Wednesday, January 12**, by visiting our web calendar and completing the form online or by contacting the Sisterhood at sishood@emanuelhouston.org or 713.529.5771, ext. 233.

Afternoon Mah Jongg (in-person) Monday, January 10, 1:00 p.m.

Play Mah Jongg at Emanu El and be a Winner.

Crack your card open, and bam, watch the winds blow jokers your way.

All are invited to join us on the second Monday of the month at 1:00 p.m. for an afternoon of fun with snacks and friends. Bring friends and enjoy!

We plan to meet in the Stillman-Lack Library unless our numbers require a move.

To help us plan accordingly, please **RSVP by Thursday, January 6**, either online by visiting our web calendar at emanuelhouston.org or by contacting the Sisterhood office at 713.529.5771, ext. 233.

MAH JONGG 2022-23

ARE YOU READY FOR A NEW CARD?

DEADLINE JANUARY 28, 2022

CHECKS PAYABLE : SYLVIA BRODY

2004 VERMONT HOUSTON, TX 77019



STANDARD CARD \$9 LARGE CARD \$10

continued next page



CONGREGATION EMANUEL
SISTERHOOD

Music
of the
NIGHT

Saturday, March 19, 2022

A MASKED AFFAIR

A LITTLE BIT OF PURIM A LOT OF BROADWAY

HONORING

Dolores Wilkenfeld

SPOTLIGHTING

Students from The River

FOR FURTHER INFORMATION AND UNDERWRITING OR SPONSORSHIP OPPORTUNITIES
CONTACT [SISHOODDONOR@EMANUELHOUSTON.ORG](mailto:sishooddonor@emanuelhouston.org)



FEATURING

Surprise Broadway Stars

HINT #2

**OUR STAR HAS
ORIGINATED A ROLE IN A
BROADWAY SHOW**

Kinder Building Tour at MFAH (in-person)
Wednesday, January 19, 11:00 a.m.

Whether you are an art aficionada or not, you won't want to miss Sisterhood's docent-led tour of the Nancy and Rich Kinder Building at the Museum of Fine Arts Houston (MFAH). The Kinder Building, located at 5500 Main St., is the MFAH's beautiful new showcase for an international collection of modern and contemporary art. After the tour, join us for lunch or a nosh on your own at Café Leonelli in the Kinder Building.

The cost of the tour is \$15 for Sisterhood members and \$20 for non-members. Payment must be received by the Sisterhood office by Tuesday, January 11. You may mail a check or register online at emanuelhouston.org. For more information, please contact the Sisterhood office at 713.529.5771, ext. 233 or sishood@emanuelhouston.org.

Cooking Like Your Bubbe (digital)
Wednesday, February 9, 6:30 p.m.

Bubbe, safta, abuela, oma! Join your sisters for a fun-filled Zoom evening as we cook along with grandmothers of various cultures, learning their delicious recipes. We hope to share a few cooking secrets your bubbe never told you, too!

There is no cost for this Zoom program. Please RSVP online or by contacting the Sisterhood office at 713.529.5771, ext. 233 or sishood@emanuelhouston.org by **Monday, February 7**.

Information on how to access the Zoom event will be emailed to registrants ahead of the program.

New Traditions Sisterhood Gift Shop

New Traditions is currently open on **Wednesdays and Thursdays from 10:00 a.m. - 2:00 p.m.** or by appointment. The New Traditions gift shop has all your Judaica needs whether you are looking ahead to Passover in April or wanting to stock up on Chanukah goodies for the next Festival of Lights.

By supporting the New Traditions gift shop, you are enabling the Sisterhood to lend additional support to the synagogue.

For more information or to make an appointment, call 713.529.5771, ext. 234.



ENDOWMENT FUND SERIES

Helfman Religious School: A Tree of Life to those who Hold Fast to it

“Although my father has been gone for 11 years, I remember him telling me 40 years ago he wanted to utilize a large portion of his inheritance from his parents to start a school at Emanu El. My dad was and mother still is extremely charitable, but their hearts were always with our congregation. They loved family and children, and wanted to give every child the opportunity to learn and further their Jewish education. They hoped to do something special that would have a lasting effect, and this school, in their name, will always be a huge part of their legacy.”

– Alan Helfman, son of Elaine and Jack Helfman

Since it opened its doors in 1944, the philosophy and foundation of Congregation Emanu El’s Helfman Religious School has remained the same – to provide an innovative, experimental and compelling religious educational program for children and teenagers to learn about Judaism and develop their own sense of Jewish identity.

“We believe students grow in their ability to make choices based on Jewish ethics and values,” states Stefani Carlson, Emanu El’s Director of Congregational Learning. “As an educator and congregant, I am ever grateful for the on-going support of a number of critical Endowment Funds, which make a big difference in the type of education we can provide all families. It is really beautiful that we as a congregation never want finances to stand in the way of families making Jewish choices for their children. Thanks to our diverse, long-standing support, we don’t have to,” she enthusiastically proclaims. There are a number of Endowment funds that make the work of The Helfman Religious School possible. Here we profile several of these and the stories behind them:

The Harold Reingold Religious School Fund

Harold Reingold was the first Religious School Director at Congregation Emanu El. He was hired by Rabbi Robert I. Kahn, and worked with Rabbi Roy Walter until his retirement, after 30+ years of devoted service. “My father was beloved by everyone who knew him,” shares his daughter, Sharon Rauch. “As the temple and religious school grew, he would come home at night with blueprints of the building and try to figure out how and where to place the classes. He would struggle

trying to find space for every student. He spent hours at the temple and loved every minute.” After his passing in 2001, the Fund in his memory was created to enhance religious school programs at The Helfman Religious School. “He loved his Judaism,” adds Sharon. “It was a significant part of his identity.”

In the last several years, this Fund, along with The Edward Wayne Family Fund, The Michael Spolane Education Fund, The Eleanor and Paul Lensky Fund, The Ellen Hurwitz Penner Fund, The Alex and Willie May Goldstein Children’s Fund, and The Lisl Bermann Education Fund have subsidized holiday happenings, family education and retreat programming, and opening and closing programs at the school.

“Congregation Emanu El was my father’s life. He loved every child in the Religious School. He especially loved children who were challenged and took particular delight in helping to guide them and find their way.”

Sharon Rauch, daughter of Harold Reingold

Alan Gaylor Religious School Teacher Assistant Fund

After Alan Gaylor’s passing in 2008, his family wanted to do something to honor his memory. He had 12 grandchildren who went through Emanu El’s religious school where many young Teaching Assistants played a vital role. When the temple budget required some important support for these invaluable assistants, his family thought it was a perfect fit. “My parents were very charitable and very much believed in supporting the synagogue,” shares his daughter Joni Lewis. “They always taught us to work hard, step up, and lead by example. In particular, my dad had a soft spot for people who were trying to get ahead for their families,” she recalls. “He understood the value of working hard and appreciated all who did as well.”

continued next page

Guidance from our past, growth for our future

“Both mom and dad believed Religious School was one of the important spokes to success – supporting kids and education. To be able to perform their best and provide a little extra help ties into principles of what Judaism is about. This is our family’s way of coming full circle, from supporting youth, to ultimately serving on the Board and leaving a lasting legacy.”

Stuart Gaylor, son of Lillian and Alan Gaylor

“My grandmother took her days at the school very seriously and ‘meant business’ when it came to getting a Jewish education. She loved the children at Emanu El – they and the religious school were a huge part of her life.”

Nannette Putterman, granddaughter of Julia Kaplan

students. This fund is used for teacher development and training, enabling the temple to send our teachers to seminars and conferences as well as bring national and international speakers to the congregation to enhance our Jewish education.

The Julia Kaplan Religious School Scholarship Fund

Julia Kaplan, a beloved educator, was the founding principal of our Religious School. “She designed the school’s original curriculum, and did everything from making latkes to providing the hanging fruit for the sukkah,” shares Celine Kaplan, her daughter-in-law. “The Fund was established in her honor for her many years of service to the religious school after 25+ years of involvement. It was originally used to support Religious School arts, like taking students to see *The Diary of Anne Frank*, at the Alley Theater,” she adds.

In addition to this invaluable fund, there are several important funds which make possible a full array of need-based scholarships, enabling educational opportunities for students at all levels. These funds include The Philip G. Lusky Religious School Scholarship Fund, The Cantor-Stone Religious School Fund and The Religious School Scholarship Fund.

The Shirley and Marvin Barish Teacher Enrichment Fund

The incredibly generous Barish family has long contributed to the educational efforts of Emanu El

Endowed Funds which support The Helfman Religious School include:

The Shirley and Marvin Barish Teacher Enrichment Fund

The Harold Reingold Religious School Fund

The Alan Gaylor Religious School Teacher Assistant Fund

The Edward Wayne Family Fund

The Michael Spolane Education Fund

The Eleanor and Paul Lensky Fund

The Ellen Hurwitz Penner Fund

The Alex and Willie May Goldstein Children’s Fund

The Lisl Bermann Education Fund

Scholarship Funds

The Julia Kaplan Religious School Scholarship Fund

The Philip G. Lusky Religious School Scholarship Fund

The Cantor-Stone Religious School Fund Religious School Scholarship Fund

continued next page



Our teacher assistants play an integral role in our Sunday school program. The program which is funded through the Alan Gaylor Religious School Teachers Assistant Fund supports over 50 teacher assistants this year. All teacher assistants must also participate in the Helfman Upper School program.



Be a Part of It

On any financial level, we all have the capacity to impact the future. For additional information on contributing to the temple's Endowment through planned giving and legacy gifts, please contact Anna Shabtay at annas@emanuelhouston.org, or scan the QR code with your cell phone camera.

continued next page



Prior to COVID, the endowment funds have enabled our students to interact and learn from visiting educators. In 2019, our fourth-grade class received a visit from Lior and Noy from the Leo Baeck Education Center in Haifa.



Helfman Religious School hosts multiple family education programs through the year starting with our consecration family education program at the onset of the calendar and continuing with other opportunities for families to engage with other families and our clergy.

An Update on Music at Emanu El

Emanu El has a legacy of beautiful, soul-filled music in worship. From the angelic and majestic sounds of the choir and organ in the Barish sanctuary to the joyful and exuberant sing-along melodies in the Proler Chapel, our congregation has been blessed with musical treasures. Rabbi Pinchas of Koretz said it best:

*Alone I cannot lift my voice in song
Then you come near and sing with me
Our prayers fuse and a new voice soars
Our bond is beyond voice and voice
Our bond is one of spirit and spirit!*

When we pray together in song, we connect with the people around us. When our voices come together, we build new relationships within our community. In this moment, as we prepare to celebrate the retirement of our beloved cantorial soloist, Barbara Loeser, I want to express my gratitude on behalf of the congregation to the members of the Shabbatoners. Their music and leadership have lifted our spirits, enriched our worship, and helped us to feel a connection both to our ancient texts and to God. As we say goodbye to the Shabbatoners, we acknowledge the powerful impact they have had on our congregation over the years.

We are also happy to welcome some new and familiar faces who will be helping to lead some of our worship services over the coming months. Thank you in advance for warmly welcoming them into our sacred spaces.



Laura Broscow is a California native who has been living in Houston for the last several years. She holds a Bachelor of Music in Vocal Performance from University of Arizona, and a Master of Music in Vocal Performance from Michigan State University. Her professional performance credits include gigs with Toledo Opera, Opera Grand

Rapids, Pacific Opera Project, and Mississippi Opera. She also sang the role of Anne Frank in James Whitbourn's piece "Annelies" with the Houston Chamber Choir. This past fall, Laura was the cantorial soloist for the High Holy Days at Houston Hillel.



Cantor Francyne Davis Jacobs earned her undergraduate degree from Brandeis University and her Cantorial degree and MA in Jewish Education from Gratz College. Cantor Jacobs has served congregations in Pennsylvania, New Jersey and all over southeast Texas. Cantor Davis Jacobs teaches Music Together classes for young children and their

caregivers, and leads services at local synagogues. She serves on the board of the Evelyn Rubenstein JCC and is

the current president of the Women Cantors' Network.



Cantor Kat Hastings is a native of Louisville, KY and has lived in Houston since 2011. For the last six years, Cantor Hastings has led High Holy Day services for Congregation Jewish Community North in Spring, TX. She leads a monthly Shabbat service at the Village of River Oaks. Before Houston, she served as cantor at Temple Kol Ami, in

Detroit, MI. She earned her cantorial ordination and a Masters in Sacred Music from Hebrew Union College – Jewish Institute of Religion in New York. She is currently the Executive Assistant to the President and CEO at Collaborative for Children and enjoys singing with International Voices Houston.

Gathering Place Resumes at Congregation Emanu El (in-person) Monday, February 14, 10:00 a.m. – 1:00 p.m.

Congregation Emanu El and CarePartners are excited to share that Gathering Place will resume its monthly meetings in February.

The Gathering Place is a half-day program for people with Alzheimer's and other forms of memory loss held at one of over 50 partner sites throughout the greater Houston area. Emanu El hosts its gathering on the second Monday of each month from September through June.

Care partners participate in crafts, entertainment, movement therapy, lunch and bingo. Family members with memory issues benefit from the stimulation and interaction.



Volunteers and clowns Ha Ha, Zany & Spunky made an appearance at a Gathering Place event in 2017. Emanu El has hosted Gathering Place for 15 years and in 2020, was honored with the 'Partnership Award' by Care Partners. Each month's Gathering Place event includes entertainment and/or special guests to bring smiles to the faces of the clients and caregivers.

continued next page

Due to new protocols, volunteers must go through a CarePartners registration process prior to attending a Gathering. Volunteers must complete a registration form, a background check and view required videos prior to attendance. These guidelines were implemented for safety reasons as that is a priority when it comes to our caregiving families, our Care Team volunteers, and our partnering congregations.

For more information on Emanu El's Gathering Place group, please contact Phyllis Berman at pb_berman@yahoo.com. Those seeking to enroll a person that they are caring for can contact Tom Breaux at tbreaux@carepartnerstexas.org or call 713.682.5995.

Emanu El's partnership in the Gathering Place is generously underwritten by the Riva Bursten Caring Congregation Fund.

An Update from Emanu El Memorial Park

Congregation Emanu El's cemetery, Emanu El Memorial Park, is located at 8341 Bissonnet, near the intersection with Gessner. It is open for visitors daily – including weekends – from 8:00 a.m. to 5:00 p.m.

Recently, out of an abundance of caution and to align ourselves with policy at other Jewish cemeteries in Houston, we have begun requiring professional security during funerals to be arranged through the funeral

homes. In addition to these measures, we also have signs posted reminding our visitors to lock their cars. For larger unveilings, we recommend private security as well, which can be arranged through the temple office. When you are planning your family's unveiling service, please reach out to Alisha Klapholz (alishak@emanuelhouston.org, 713.529.5771, ext. 213) to ensure that it is on our schedule and to arrange security if needed.

Congregation Emanu El's staff, lay leaders and cemetery caretaker put a lot of time and effort into maintaining Emanu El Memorial Park as a beautiful and tranquil space for all of our families and, if there's ever anything we can do to help support you and your family, please let us know.

– *Emanu El Cemetery Committee*

Becker School Priority Registration for members of Congregation Emanu El begins on Monday, February 7

To be included in priority registration, be sure to submit an online application located on our website for children 15 months to 5 years of age. Members who have applied will receive an email with information about registering their child for the 2022-2023 school year. For questions regarding admissions or to schedule a tour, please contact Judy Lazor at 713.535.6400 or judy1@emanuelhouston.org.

Frying Up Latkes with the Emanu El Clergy

Lots of latkes! Members of our clergy team upholding an Emanu El tradition by making latkes for the staff team ahead of the annual staff potluck holiday celebration. This annual celebration allows the staff to celebrate the holiday season with each other.





Becker School

THANK YOU FOR YOUR SUPPORT ON #GIVINGTUESDAY!

Over 88 families contributed more than \$59,000 to the Becker School Scholarship Fund!

Thank you to everyone who donated (as of December 13, 2021).

The Allday Family
Beth Merfish & Dan Coleman
Sherry & Gerald Merfish
Anonymous (8)
Jeri Amundsen & Arthur Feldman
Lee Bar-Eli & Clifford Nash
Jacquelyn Barish
The Binkovitz Family
Meredith & Seth Bleiler
Dawn & Mitch Blitz
Steve & Stefani Carlson
The Crockett Family
The Dailey Family
Alina & Richard Doveve
Nancy Parkans Ehrenkranz
Steven & Rita Engelhardt
Rabbi Josh & Annie Fixler
Peter Fixler
Thelma Fixler
The Fokom Family
Paul & Fredi Franks
Auna & Sam Freedman
Sandy & Andi Gaitz
The Gauthier Family
Stuart & Anita Gaylor
The Giga Family
Marianne & Larry Greenfield
Richard Gruen
The Hawkins Family
Julie & Rabbi Oren Hayon
The Hirshfeld Family
The Hritcko Family
Bryce & Rachel Kaufman
Paul Friedman & Joanna Kornfeld
The Kurtin-Lew Family
Virginia Ann Kennedy & Lawrence B. Lachman
Jennifer & David Lamden
Judy & Allan Lazor
Barbara Black Levine & Irv Levine
Paulette & Mel Levine
Lauren & Russell Libby

Rachael & Barry Lichman
Barbara Loeser
Madeline Lowitz
Michael McGee
Jessica Segal & Danny Miller
Lucy & Peter Mosbacher
Kathy & Stephen Parven
Matt & Jeanne Pasternak
Hannah Brook & Jeffrey Peskin
Aliza & Jason Plotkin
Ronald & Elaine S. Plotkin
Chris & Alison Porter
Alana, Alan, Josie, Jules & Sybil Pulaski
Janine & Charles Pulman
Diane Puschett
Eliza & David Rappaport
Linda & Larry Rauch
Patricia & Mark Rauch
Clarice Jacobson & Brian Rosenzweig
Robin & Rodney Roth
The Rubenstein Family
Brenda & Mansel Rubenstein
Emily & Josh Schaffer
Annalesa & James Schleicher
Phyllis & Steven Segal
Anna & Erez Shabtay
Pranay & Prachee Shah
Christian Simmons
Cantor Rollin Simmons & Rabbi David Segal
Brandon & Emily Stein
Jennifer & David Stockel
Linda Rauch Susman
Rachel & Jesse Teichman
Elizabeth & Luke Townsend
Barry & Patricia Trachtenberg
Rona & L. A. Train
The Wagner & Freilich Families
Judy Weil
Michelle Weisman & KC Collins
Sarah & Adam Williams



The Becker School Scholarship Fund helps ensure that tuition is never a barrier to receiving a Becker education!

Books, and other publications. She has appeared numerous times on MSNBC, NBC, the Brian Lehrer Show, and NPR, amongst other media outlets.

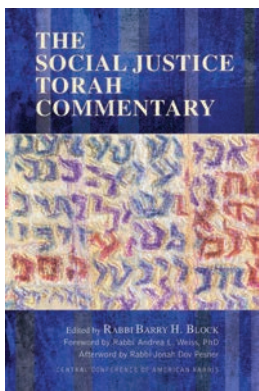
To help us plan appropriately for the evening's events, we ask that you register online by visiting our web calendar at emanuelhouston.org or by calling 713.529.5771.

Emanu El has a longstanding and rich tradition of hosting significant public thinkers to reflect on current events through its Endowment Fund Speaker Series. Recent speakers have included Academy Award-winning actress Marlee Matlin, journalist Carl Bernstein and the Reverend William Barber.

Ungar-Sargon's appearance at Emanu El is generously funded by the Nathan Berg Lecture Series fund, the Caplovitz Lectureship Fund, the Eleanor & Frank Freed Lectureship Fund, Helen & Harry Reichel Lecture Fund, Shirley & Bernard Weingarten Fund, and the Julius Zinn Fund.

Exploring The Social Justice Torah Commentary (digital)

Tuesday, March 1, 6:30 p.m.



What does the Torah have to say about social justice? As the contributors to *The Social Justice Torah Commentary* demonstrate, a great deal.

Join Emanu El on Zoom as the publication's editor Rabbi Barry H. Block leads a panel discussion about this new commentary with three contributors – Rabbis Josh Fixler, David Segal and Emily Langowitz.

A native Houstonian and currently serving Congregation B'nai Israel in Little Rock, Arkansas, Block edited the commentary which features a diverse array of authors that delve deeply into each week's parashah, drawing lessons to inspire *tikkun olam*.

Chapters address key contemporary issues such as racism, climate change, mass incarceration, immigration, disability, women's rights, voting rights, and many more. The result is an indispensable resource for weekly Torah study and for anyone committed to repairing the world.

Classmates at Hebrew Union College – Jewish Institute of Religion (HUC-JIR), our Reform Movement's seminary, Fixler and Langowitz co-authored *Stricken from the Text: Sacred Stories of Reproductive Justice*, centered on parashah *Mishpatim*.

A member of our congregation, Segal penned the contribution, *The Abraham Bind: The Akeidah and Religious Freedom*, based on the Torah portion *Vayeira*.

As part of this program offering, all participants are invited to take advantage of a special 20% off discount off the retail price of *The Social Justice Torah Commentary* utilizing the promo code 20JUSTICE at check through **Tuesday, March 8**.

To register for this program, visit emanuelhouston.org or call 713.535.6414. A Zoom link will be sent ahead of the program.

For more information, contact Jason Plotkin at 713.535.6414 or jasonp@emanuelhouston.org.

7th Annual Second Night Seder (in-person) Saturday, April 16, 6:00 p.m.

Following a two-year hiatus, we are thrilled to invite the congregation and community to our 7th Annual Second Night Seder.

A Passover Seder led by our clergy, our seder features a fully catered meal that includes all the staples from matzoh ball soup to gefilte fish! The meal is catered by Houston Catering Concepts, the preferred caterer of Congregation Emanu El.

Registration will open in mid-January, and the deadline to register is **Wednesday, April 6**. The cost of attending Seder will be shared upon the opening of registration.

Those members of our Congregation seeking financial assistance or interested in making a donation to make seder accessible for members of our community are encouraged to reach out to program director Jason Plotkin at jasonp@emanuelhouston.org or 713.535.6414.

Second Night Seder is generously underwritten by the Susman Fund for Family Programming and the Rabbi Roy & Linda Walter Enrichment Fund.



The Emanu El Volunteer Choir recently performed at the Brookdale for residents. The choir is under the direction of Ann Frohbieter and meets regularly at Emanu El on Tuesday nights at 6:30 p.m. The group will resume its regular Tuesday meeting schedule on Tuesday, January 11.



We appreciate the thoughtfulness of those who remember and honor their friends and loved ones through their generous contributions through December 13, 2021.

ACCESS FOR ALL FUND

To ensure Emanu El is a welcoming, accessible and inclusive community

In Memory of

Linda Colbe Stein

Caren & David Cowan
K. Danziger & M. Latiolais

AUBREY & SYLVIA FARB COMMUNITY SERVICE FUND

To support small and emerging organizations that improve life for underserved Houstonians

In Honor of the Birth of

Micah Band

Ronna & Clayton Spitz

In Memory of

Aubrey Farb

Robert S. Scolnick

Charlotte Frucht

Laurie & Jeff Bricker

Georgeann Goldenberg

Gloria & Joe Pryzant

Selma Klashman

Elaine Kuper, Laurie & Jeff Bricker

BECKER EARLY CHILDHOOD FUND

To provide and enhance Becker Early Childhood Center programs

In Honor of

Barbara Loeser

Susan & Ed Septimus

BECKER EARLY CHILDHOOD SCHOLARSHIP FUND

To provide Becker Early Childhood Center scholarships

In Memory of

Georgeann Goldenberg

Susana Paoloski

Linda Colbe Stein

Marianne & Larry Greenfield

CERSONSKY CEMETERY BEAUTIFICATION FUND

To beautify Emanu El Memorial Park

In Honor of

Linda Colbe Stein

Ted Ruggiero

In Memory of

Peggy & Louis Ashe Gloria Cohn

Sharon & Herb Cohn

CHESTER MARCUS CAMPERSHIP FUND

To provide Greene Family Camp scholarships

In Memory of

Linda Colbe Stein

Shirley Burkorn

CLERGY'S GOOD WORKS FUND

To provide Emanu El's clergy with funds to help individuals in need and to support organizations that benefit the community

In Appreciation of

Rosh Hashanah services

Patti Rounsevell & Kenneth Labowitz

Rabbi Pamela Silk

Madeline Lowitz

In Honor of

Rabbi Josh Fixler

Sharon & Elliot Slusky

Rabbi Oren Hayon

Cheryl & Gary Borden
Houston Jewish Funerals
Inga Leon
Katharyn Fox Slater & Don A. Robins

The Bat Mitzvah of Sophie Blitz

Cheryl & Haran Levy

Ava Silk

Irv & Barbara Black Levine
Cindy & David Senior

The Birth of Aaron Davis Weingast

Barbara & Henry Fasteau

The Speedy Recovery of Celine Kaplan

Rozanne & Howard Rubin

In Memory of

Dorothy Jacobs

Jill & Barry Racusin

Linda Colbe Stein

Charlotte Berkowitz
Carol & Barry Goodfriend

EDIS LEWIS PARKANS EMANU ELDERS FUND

To provide programs for Emanu Elders

In Honor of

The Birthday of Marvin Stein

Al & Judy Fis

In Memory of

Charlotte Frucht

Sue & Stu Baum
Leslie & Scott Bormaster
Michaele & Michael Brown
Shelley Green
Bonnie & Mike Grossfeld
Joan Oshman
Susan & Ed Septimus
Donna & William Zhukovsky

EDWARD WAYNE HUNGER FUND

To feed the hungry of Houston

A Donation

Don Akens
Cynthia & Ben Klein
Richard Wolf
David Odle

In Honor of

Linda & Richard Zoll -

Receiving the 2021 Governor's Volunteers Award for the Volunteers Family of the Year

Donna & William Zhukovsky

The Birthday of Marvin Stein

Sara Astrich

In Memory of

Michael Alexander Ginsberg

Rozanne & Howard Rubin

Arlene Davidson Merson

Lois & Larry Greenberg
Dava & Archer McWhorter

Linda Colbe Stein

Sara Astrich

FLORENCE & BEN BLUM LEADERSHIP FUND

To send Emanu El leadership to URJ Biennials and underwrite leadership programs and speakers

In Honor of

The Speedy Recovery of Barbara Levine

Myra Lipper
Maureen Tiras

In Memory of

Georgeann Goldenberg Linda Colbe Stein

Myra Lipper
Maureen Tiras

FREDELL LACK EICHHORN CANTOR'S MUSIC FUND

To enhance musical programming

In Appreciation of

Cantor Rollin Simmons

Michaele & Michael Brown

In Honor of

Barbara Loeser's Retirement

Irv & Barbara Black Levine

Linda & Richard Zoll - Receiving the 2021 Governor's Volunteers Award for the Volunteers Family of the Year

Marilynne Franks Bleeker

In Memory of

Charlotte Frucht

Linda Schmiege Collins

GENERAL ENDOWMENT FUND

To provide for the general needs of Emanu El and its facilities

A Donation

Dan Steiner

GOCHMAN BECKER EARLY CHILDHOOD FUND

To provide for Transportation Fair and the librarian in Sugar's Library

In Memory of

Georgeann Goldenberg

Dee Dee Dohen

GREENE FAMILY CAMP FUND

To support Greene Family Camp

In Honor of

JJ Silk

Diane Puschett

HAROLD REINGOLD RELIGIOUS SCHOOL FUND

To enhance Helfman Religious School programs

In Honor of

Judy Stein's 50 years of teaching at Emanu El The Birthday of Charlotte Berkowitz

Marilynne & Alford Bleeker

continued next page

In Memory of
Georgeann Goldenberg
Barbara Loeser &
Linda Hayon
Marlene A Rubin

JULIUS NATHAN MUSIC FUND

To provide musical programs
In Honor of
Barbara Loeser's Retirement
Marilynne & Alford
Bleeker

MICHAEL SPOLANE EDUCATION FUND

To enhance Helfman Religious School programs and provide funds for teachers to attend conferences
In Memory of
Georgeann Goldenberg
Aliza & Jason Plotkin

PHILIP G. LUSKY RELIGIOUS SCHOOL SCHOLARSHIP FUND

To provide Helfman Religious School scholarships
In Memory of
Charlotte Frucht
Susan & Sandy Baum

PRAYER BOOK FUND

To provide prayer books for worship
In Memory of
Charlotte Frucht
Judy & Allan Lazor
Linda Colbe Stein
Minna & Julius Hochstein

RABBI ROY & LINDA WALTER ENRICHMENT FUND

To support spiritual and cultural enrichment
In Appreciation of
Rabbi Roy Walter
Stacey & Steven Sumrow

In Honor of
Jane & Jon Pollock
Children & Grandchildren
Rabbi Roy Walter
Milton Finegold

The Birthday of Barbara Rady Kazdan
Sarah, Jessica & Josh
The Marriage of Aaron Walter & Michael Kingsley
Sara Astrich

In Memory of
Linda Colbe Stein
Jacqueline & David
Blinderman
Carol & Larry Fradkin

RELIGIOUS SCHOOL SCHOLARSHIP FUND

To provide Helfman Religious School scholarships
In Memory of
Georgeann Goldenberg
Madeline Lowitz

RICKY SCHNURR CAMPERSHIP FUND

To provide Greene Family Camp scholarships
In Memory of
Charlotte Frucht
Pat & Chuck Green
Alex Nachenberg
Dorothy Schaktman
Larry Barr-Meyer

RIVA BURSTEN CARING CONGREGATION FUND

To support programs that assist people in the community
In Memory of
Robert Grossman
Annette Schwartz
Myra Mayer
Rona Weiner & Family
Linda Colbe Stein
Nancy Peskin
Susan & Ed Septimus

RONALD BROCHSTEIN EARLY CHILDHOOD FUND

To enhance preschool education
In Honor of
The Birthday of Ruthe Berman
Judy Myers
Gail Schnyder
Marianne & Larry
Greenfield
The Speedy Recovery of Sara Astrich
Marianne & Larry
Greenfield

In Memory of
Geane Glaser
Francine & Bradley
Beckman
Cindi & Henry Hochman
Marilyn L Corn
Morris H. Greenfield
Marianne & Larry
Greenfield

Rhoda Priesman
Marilyn & Rob Corn
Marianne & Larry
Greenfield

ROSE GOODFRIEND ISRAEL PILGRIMAGE

To help send Confirmation students to Israel
In Honor of
The Bar Mitzvah of Syd Waldman – 50th Anniversary
Marilynne & Alford
Bleeker

SHIRLEY & MARVIN BARISH TEACHER ENRICHMENT FUND

To provide training programs for Emanu El teachers
In Memory of
Georgeann Goldenberg
Jeff & Dr. Karen
Basen-Engquist

SHIRLEY BARISH MEMORIAL ISRAEL EXPERIENCE FUND

To send Helfman Religious School high school students to Israel
In Memory of
Jill Friedman Fixler
Ken Klein

SISTERHOOD FLOWER FUND

To provide flowers in our worship spaces
In Honor of
Rabbis, Cantor, Teachers & Religious School Staff
The Family of Quinn
Kalba
The Sussman Family
Pat & Howard Sussman,
Laura, Jason, Sydney,
Aidan & Max Buchman
The B'nei Mitzvah of Dana & Matthew Henning
The Henning Family
Quinn Kalba
The Sussman Family
Eden Sussman
The Kalba Family
Mom, Dad, Eli, Theo
Sussman
Pat & Howard Sussman,
Laura, Jason, Sydney,
Aidan & Max Buchman

In Memory of
Grace & Howard Benedikt, Adele Buchman, Joshua Mitnick, Raymond Nealon, Ida & Bernard Sussman

Pat & Howard Sussman,
Laura, Jason, Sydney,
Aidan & Max Buchman

Nason Feldman

Sheri Helfman Feldman
Charlotte Frucht
Sandy Harris
Nora Laufman
Rikki Riley Popkin
Jeri & Marc Shapiro

Norman Getz

Philip Getz
Linda Colbe Stein
Barbara & Allen Pauly
Emily Weingarten, Johanna Goldberg & Sydney Brown
Segal, Wisner &
Weingarten Families

SISTERHOOD FUND

To provide for and enhance Sisterhood programming
In Memory of

Charlotte Frucht

Sylvia & Steven Brody
Linda Chess
Judy & Michael Feinstein
Sandy Frieden
Dorothy & Robert Halpin
Francyne & Kevin Jacobs,
Halle, David & Aaron
Barbara & Geoffrey
Koslov
Cindie & David Kurtz
Eva Loeb
Susan Penn
Shirlee & Mark Rosenthal
Karen & Bill Rubinsky
Cindy & David Senior
Barbara & Jim Rubenstein

Jackie Glassgold

Lori Gibson
Dorothy Jacobs
Barbara & Allen Pauly
Linda Colbe Stein
Ellen & Joel Blumberg
Sylvia & Steven Brody
Marcia Weinstein

SUSMAN FUND FOR FAMILY PROGRAMMING

To support programs for families
In Honor of
Lila Rauch
Robin Susman
Linda Susman
Pam & Andrew Susman

continued next page

In Memory of
Birdie Rauch
Lila Rauch

TEMPLE FUND

To support the needs of
the temple & to fulfill the
mission of Congregation
Emanu El

A Donation

Charlotte Berkowitz
Lisa Blackwell
Pam & John Blumenthal
Patricia Kant
Jennifer & Jeffrey Ross

In Honor of
Shel Vedlitz
Sylvia & Steven Brody
Sharon E. Katz
**The Bar Mitzvah of
Victor Elliott Pesin**
Madgelyn & Richard Pesin
**Syn Waldman – 50th
Anniversary**
Cheryl & Wayne Lidsky
**The Birthday of
Marvin Stein**
Elaine Kapell
**The Marriage of Shelby
Mills & Eric Lynn**
Linda & Paul Lynn

In Memory of
Gladys Slavin Brenner
Philip A. Davidson
Charlotte Frucht
Janice Levine
Mary Schwendeman &
Arlene Gross
Michelle Roth Glauben
Sylvia & Steven Brody
Georgann Goldenberg
Claire & Dick Brooks
Sam Jacobson & Carl
Josehart
Linda & Paul Lynn
Donna & Philip
Tenenbaum

Dorothy Jacobs
Janet & Mickey Frost
Susan & Steven Perin
Rozelle J. Schultz
Herman J. Schultz
Linda Colbe Stein
Herman J. Schultz &
Family
Bettye & Mike Schuman
Vexler & Monterrey Iron
Family
Harold Weiser
Lawrence Weiser
Alice & Ralph Berkman

MEMBERSHIP NEWS

Welcome Our Newest Members

We are pleased to welcome the newest members to our congregational family. Please be sure to introduce yourself to our newcomers as they become a part of our community.

Vikki & Rich Evans

Gary Grossman

Traci Donatto, son Russell

Melaine Moore & Josh Levy, daughter Sivan

New members will be shared in the *Bulletin* regularly. Know someone interested in becoming a part of our community? New to town or looking to find a way to connect with Emanu El? Contact Jason Plotkin at jasonp@emanuelhouston.org or 713.535.6414.



Find Us On YouTube!

Looking for a one-stop shop to catch the latest worship services, musical selections, videos from our schools and more while we are separated during COVID-19?

More than 900 videos of new content created since the pandemic have been posted to Emanu El's YouTube page with dozens and dozens more from the archives also shared.

Find us on YouTube by searching "Emanu El Houston Video" and subscribe today!



Get Social With Us!

Did you know Congregation Emanu El is on Instagram? In addition to our active Facebook pages, be sure to follow us on Instagram to catch snap shots of happenings around the synagogue. From camel sightings to social action, a thriving youth group to clergy in action and more!

Find us on Instagram at [instagram.com/emanuelhouston](https://www.instagram.com/emanuelhouston) or if you are already a member, find us at @emanuelhouston. And yes, please feel free to "check-in" at Emanu El when you are here for events and happenings!

Faith Leaders Coalition Meets at Emanu El

Rabbi Josh Fixler is the president of the Faith Leaders Coalition of Greater Houston. This group is committed to religious diversity, cultural respect, and advocacy for the people of Greater Houston.

FLC held its first in-person lunch and learn since the onset of the pandemic in early December at Emanu El. The gathering featuring Phuc Luc for a program entitled, *"Spirit of Connection: Remembering Well & Healing Well."*



Chanukah in the Becker Classroom

During Chanukah, we were reminded that the light of the candles shine brightest through our youngest learners at Becker School. Becker hosted a Chanukah Happening to celebrate Chanukah.



Warehouse Shabbat Returns at Emanu El

Emanu El's Young Professionals hosted Warehouse Shabbat in November. Traditionally held out in the community, the group hosted this alternate Shabbat experience at Emanu El in a transformed Oshman Multi-Purpose Room to be able to control COVID protocols. Rabbi Josh Fixler and Cantor Rollin Simmons led the service. Be on the lookout soon for another Warehouse Shabbat experience.



continued next page



Emanu El Clergy Visit Brookdale for Chanukah

In the midst of Chanukah, members of the Emanu El clergy team made their way to the Brookdale Senior Living community to lead blessings and sing some traditional Chanukah music with the residents. Our clergy were so happy to be together with the Brookdale community again this Chanukah. In 2020 due to COVID, Rabbi Fixler & Cantor Simmons created a fun Chanukah video that was shared with the residents.

Chanukah Shines Bright at Shabbat

On December 3, members of the Congregation Emanu El community enjoyed dinner before coming together for Shabbat. During the Shabbat service, families and friends gathered around tables throughout the Barish Sanctuary to light their menorahs on what was the sixth day of Chanukah.



A Jewston Chanukah Bazaar

Rabbi Josh Fixler and our Youth & Young Adult Engagement Coordinator Becca Schwartzberg donned their Chanukah sweaters and represented Emanu El at the Jewston Chanukah Bazaar.

More than 70 Jewish 20-somethings attended the event which included booths featuring Chanukah Pong, Semitic Squad Games, trivia and more. Latkes, sufganiyot and plenty of L'chaims were flowing through the evening.





Let me guide you **home.**

Terry Cominsky
REALTOR-ASSOCIATE®

713.558.3331
Terry.Cominsky@SIR.com

Martha
Turner

Sotheby's
INTERNATIONAL REALTY

HOUSTON'S OLDEST JEWISH OWNED
HEADSTONE & MONUMENT COMPANY
BENCHES, BRONZE PLAQUES, CRYPT FACES & RESTORATION



EXCLUSIVELY JEWISH MEMORIALS
VISIT OUR 30,000 SQ. FT. MANUFACTURING FACILITY

ASK FOR SANDY GAITZ
OR BRITTANY BYLO

281-888-5522

*Thank You to the community for
supporting us over the last 20 years*



HOUSTON JEWISH FUNERALS

Jewish-owned and operated since 2001



SCAN OUR QR CODE FOR A MESSAGE FROM OUR STAFF



WATCH NOW

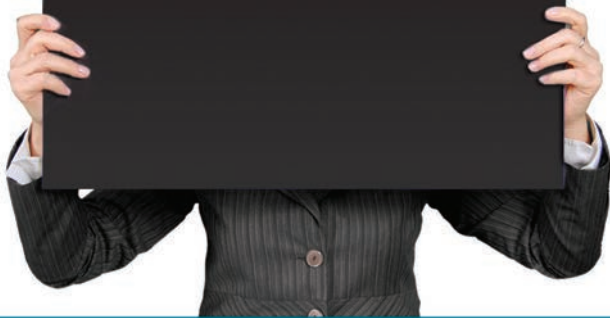
Jewish Heritage... Jewish Traditions... Jewish-owned and operated

Contact us today at (713) 666-0257 | HoustonJewishFunerals.com

ADVERTISE WITH US

Increase your reach to nearly
1700 families each month!

Contact David Lamden at
DavidL@emanuelhouston.org.



WALDMAN FUNERAL CARE

Extraordinary Service. Compassionate Care.

NOW IN OUR OWN LOCATION
SAME EXTRAORDINARY SERVICE
COMPASSIONATE CARE AND ATTENTION TO DETAILS.

Whether you're prepared or not, we are here for you, 24/7.

At Waldman Funeral Care, we know what's important to families: consistently responsive service delivered with warmth and respect for Jewish values, traditions and ceremony.

Committed to guiding, supervising and handling all the details with an assuring combination of compassion and expert professionalism, We take care of all the details so families can focus on taking care of each other.

Call Waldman Funeral Care for more information or a pre-planning consultation.

713-875-4811

Syd@WaldmanFuneralCare.com

www.WaldmanFuneralCare.com

7555 South Freeway · Houston, Texas 77021

Texas Funeral Establishment #4622



Syd Waldman
Funeral Director



MOVE-IN INCENTIVES
NOW AVAILABLE

The Medallion
a symbol of distinction in assisted living

Stephanie Barrocas

713.778.5777

sbarrocas@themedallion.org

6262 N. Braeswood Blvd.
Houston, TX 77074

THEMEDALLION.ORG



RESPIRE CARE NOW AVAILABLE

ASSISTED CARE • INCLUSIVE PRICING

- Assistance with personal care, dressing & on-site beauty salon.
- 24-hour nursing care, visiting physicians, committed staff, & on-site rehabilitation
- Scheduled transportation, housekeeping & laundry
- Medication Management
- Spacious accommodations with kitchenette & personal call system
- Elegant dining room with fine kosher dining & luxurious common areas
- Media room, activity center, library & game rooms
- Heated aqua therapy pool, wellness center, beautiful courtyards & outdoor areas
- Internet, wifi & cable access

FACILITY ID #102491



NEW TRADITIONS

SISTERHOOD JUDAICA SHOP

OPEN WEDNESDAYS & THURSDAYS
10:00 AM - 2:00 PM OR BY APPOINTMENT

Come shop to support the Sisterhood!
New Traditions is your one-stop gift shop for all Judaica essentials, from household items to gifts and more!



21 DAYS OF Gratitude

BEGINNING
TUESDAY, JANUARY 4

REGISTER ONLINE:
EMANUELHOUSTON.ORG



A MELTON CLASS
TAUGHT BY RABBI HAYON

THURSDAYS, JANUARY 27 - MARCH 10

ERJCHOUSTON.ORG

TOT SHABBAT

FEBRUARY 4TH



VISIT OUR WEB CALENDAR TO RSVP
EMANUELHOUSTON.ORG





This Bulletin is printed on recycled paper.



Congregation Emanu El

Oren J. Hayon, Senior Rabbi
Pamela B. Silk, Associate Rabbi
Joshua R.S. Fixler, Associate Rabbi
Roy A. Walter, Rabbi Emeritus
Rollin Simmons, Cantor
David Lamden, Executive Director
Jason Plotkin, Program Director
Anna Shabtay, Director of
Congregational Advancement
Sarah Williams, Early Childhood Director
Stefani Carlson, Director of
Congregational Learning

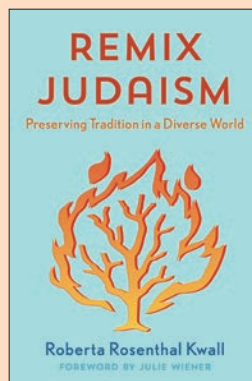
Jeri Amundsen, President
Stuart Gaylor, Senior Vice President
Melissa Carson, Vice President
Ronnie Kurtin, Vice President
Matt Pasternak, Vice President
Alana Pulaski, Vice President

fredi Bleeker Franks, Treasurer
Dawn Blitz, Secretary
Rodney Roth, Honorary President
Andrew Gass, Brotherhood President
Carol Sue Zions, Sisterhood President

EMANUELHOUSTON.ORG

SAVE THE DATE:

Remix Judaism: Preserving Tradition in a
Diverse World with Roberta Kwall (digital)
Tuesday, April 5, 7:00 p.m.



Join us when Congregation Emanu El hosts Roberta Kwall as she discusses the thesis of her widely acclaimed new book, *Remix Judaism: Preserving Tradition in a Diverse World*, as it applies to individuals, parents and grandparents seeking to deepen their connection to Jewish tradition outside of strict compliance with the rules of Jewish law.

Her book demonstrates how developing a richer set of culturally religious norms in the home can provide a foundation for transmissible Jewish tradition and invites readers to construct their own

Jewish journeys with greater mindfulness and intentionality.



LIKE US ON FACEBOOK

www.facebook.com/emanuelhouston