



Congregation Emanu El

# Bulletin

## EDITOR'S NOTE:

Please note that due to print deadlines and the constantly changing environment, that information in this edition of the Bulletin may not reflect the current status of events and worship. If you have any questions about the status of a happening at our synagogue, please visit our website at emanuelhouston.org, or contact us directly at 713.529.5771. Updates will also be shared in email communications. If you are not receiving emails from the synagogue, please call us and we will assist you.

October 7, 2021 | 25 Elul 5781

VOLUME 76 NUMBER 1

## FROM RABBI HAYON



As part of its guidelines by which the Israelites will organize their communal lives in the Promised Land, the Torah establishes a unique agricultural commandment:

*For six years you will sow your land and gather its produce, but in the seventh year, you must leave it alone and let it remain fallow.* [Ex. 23:10]

*Just as the farmers recognized the value of letting their fields rest, we can also recognize the value of slowing down, reconnecting with our loved ones, and nurturing our hobbies and passions.*

This biblical rule is the law of *shmittah*, the “year of release.” During this year, our ancestors were commanded to refrain from working their fields, and to subsist on stored rations and on the produce of their perennial crops which did not require annual re-planting. This allowed the soil to rest for a full year before the Israelites resumed their regular cycles of sowing and harvesting. The *shmittah* year also includes a system for economic “release,” requiring a nullification of certain types of personal debt, thus allowing a fresh start for debtors when the seven-year cycle begins again.

As it happens, this new year of 5782 is one of these *shmittah* years. This means that observant Jews who are punctilious about upholding the requirements of this year will be making adjustments to the foods they eat this year. Even

*continued on page 2*

## Building Peace with Jerusalem Peacebuilders (hybrid)

Wednesday, October 20, 7:00 p.m.

Can the Children of Abraham be at peace?

Join us and learn how during a special evening of conversation with Rabbi Hayon and Rev. Canon Nicholas Porter, Executive Director of Jerusalem Peacebuilders (JPB).



Rev. Canon Nicholas Porter

The two will discuss JPB’s powerful work of bringing together Americans, Israelis, and Palestinians for interfaith understanding, leadership development, and peacebuilding. Each year, JPB works with thousands of youth and adults, both in Israel and in the United States including teens from

*continued on page 3*

## Refugee 101: From A Global Perspective to Local Solutions (digital)

Thursday, November 4, 7:00 p.m.

Join Rabbi Hayon and the team from the Refugee Services office at Interfaith Ministries of Greater Houston (IMGH) on Zoom for this inside look at refugee resettlement.

The Refugee Services staff will offer a global perspective on refugee resettlement and discuss the United States’ refugee resettlement program and IMGH’s work in the context of the collaboration with the U.S. State Department and Episcopal Migration Ministries.

This session will provide a better understanding of the security screening process and the immigration status terminology, as well the services provided to refugee families, supplemental programming, and ways to get involved in supporting refugee families resettling in Houston.

Following the presentation, Rabbi Hayon will moderate a question-and-answer session.

*continued on page 3*

## WORSHIP SERVICES

---

Locations are listed below for those seeking to use the streaming video portal on our website or for those attending in-person. Any changes will be shared via the regular synagogue communications.

Our Friday night services are streamed to our website, Facebook page, Roku channel, and YouTube. Our Saturday morning B'nei Mitzvah services are available solely on our website and our Saturday services offered in the Proler Chapel are offered as an in-person experience.

### **Shabbat Noach** **Friday, October 8**

6:00 p.m., Kabbalat Shabbat, Barish Sanctuary

### **Saturday, October 9**

10:30 a.m., Shabbat Morning Service, Proler Chapel  
10:30 a.m., Shabbat Morning Service, Barish Sanctuary  
B'not Mitzvah of **Emily Pesikoff**, daughter of Heather & Daniel Pesikoff and **Avery Pollock**, daughter of Tara Nutik & Stephen Burrill, Lisa & Adam Pollock

### **Shabbat Lech L'cha** **Friday, October 15**

6:00 p.m., Kabbalat Shabbat, Barish Sanctuary

### **Saturday, October 16**

10:30 a.m., Shabbat Morning Service, Proler Chapel  
10:30 a.m., Shabbat Morning Service, Barish Sanctuary  
Bat Mitzvah of **Evynd Rudin**, daughter of Allison & Steven Rudin

### **Shabbat Vayeira** **Friday, October 22**

6:00 p.m., Kabbalat Shabbat, Barish Sanctuary

### **Saturday, October 23**

10:30 a.m., Shabbat Morning Service, Proler Chapel  
10:30 a.m., Shabbat Morning Service, Barish Sanctuary  
B'nei Mitzvah of **Jules Pulaski**, son of Alana & Alan Pulaski and **Sam Slobin**, son of Stephanie & Todd Slobin

### **Shabbat Chaya Sarah** **Friday, October 29**

6:00 p.m., Kabbalat Shabbat, Barish Sanctuary

### **Saturday, October 30**

10:30 a.m., Shabbat Morning Service, Proler Chapel  
10:30 a.m., Shabbat Morning Service, Barish Sanctuary  
B'nei Mitzvah of **Jacob Caplan**, son of Katharine & Gary Caplan and **Matthew Hearn**, son of Lisa & Robert Hearn

### **Shabbat Toldot** **Friday, November 5**

5:45 p.m., Tot Shabbat Dinner  
6:00 p.m., Kabbalat Shabbat, Barish Sanctuary  
6:30 p.m., Tot Shabbat with Ellen Allard

### **Saturday, November 6**

10:30 a.m., Shabbat Morning Service, Proler Chapel

### **Shabbat Vayetzei** **Friday, November 12**

6:00 p.m., Kabbalat Shabbat, Barish Sanctuary

### **Saturday, November 13**

10:30 a.m., Shabbat Morning Service, Proler Chapel  
10:30 a.m., Shabbat Morning Service, Barish Sanctuary  
B'not Mitzvah of **Sophie Blitz**, daughter of Dawn & Mitch Blitz and **Julia Ziff**, daughter of Lauren & Garrison Ziff

---

## **FROM RABBI HAYON** *continued from page 1*

Israeli state regulators who supervise the production of agricultural products will be updating their official labels which indicate that certain foods have been produced in accordance with the shmittah laws.

But what about for us? What lessons of the “year of release” can we progressive American Jews find in this ancient law?

Personally, I find great wisdom in the concept of shmittah, which reminds us that a planned periods of fallowness will mitigate exhaustion and prudent schedules of crop rotation will increase our productivity in the long run.

All of us have experienced unprecedented exhaustion over the last two years. Many of us have felt that our inner resources are depleted and have despaired of

ever being able to reach the levels of optimism and productivity that we once knew. Perhaps this shmittah year is the perfect time for us to take some guidance from our ancestors’ wisdom and spend some time during which we permit rest and fallowness to ease the strain on our inner lives.

Just as the farmers recognized the value of letting their fields rest, we can also recognize the value of slowing down, reconnecting with our loved ones, and nurturing our hobbies and passions. Maybe the shmittah of 5782 will offer us the opportunity we’ve been waiting for to give ourselves a much-needed break from the hustle and bustle that strain our resources and our emotional well-being.

The concept of a “year of release” every seven years is a notion which preserved the health and sustainability of our ancestors’ fields long ago. Now that we have arrived at our own shmittah year, we too can benefit richly from that ancient wisdom. If we will make space this year to thoughtfully allow the parts of ourselves which are most overworked and exhausted to rest and recover, we will help provide for a healthier, more sustainable future for ourselves and our loved ones in the years ahead.

## BUILDING PEACE WITH JERUSALEM PEACEBUILDERS

continued from page 1

# Jerusalem سلام peace שלום Peacebuilders

the Helfman Religious School program.

JPB is a Christian ministry of interfaith reconciliation that partners with Jewish, Christian and Muslim institutions to provide Middle Eastern educators and youth with the skills, relationships and support they need to be effective leaders and change agents.

Its programs are developed and informed by the faith and professional experience of the Founding Director, Rev. Canon Nicholas Porter. Since 2011, JPB has steadily expanded and now leads humanitarian projects and educational programs in Jerusalem, Israel, and Palestine as well as intensive summer programs in the United States and England involving thousands of participants annually.

This event will be in-person in the Barish Sanctuary and available via live stream through the Barish Sanctuary streaming video page.

## REFUGEE 101: FROM A GLOBAL PERSPECTIVE TO LOCAL SOLUTIONS

continued from page 1

To help prepare for the event, we ask that you register in advance online at [emanuelhouston.org](http://emanuelhouston.org). A Zoom link will be sent out the morning of the event.

For more information, contact Jason Plotkin at [jasonp@emanuelhouston.org](mailto:jasonp@emanuelhouston.org) or 713.535.6414.

### **Book of Memory**

These submissions were not included in the *Book of Memory* that will be distributed during the High Holy Days and are shared as part of our Temple's *Bulletin*.

In Memory of

#### **Bernice (Bernie) Feld**

by Jack and Susan Lee and Family

#### **Bernice (Bernie) Feld**

by Laurie R. Lee and Dico Hassid and Family

#### **Bill Spitz, Joan Spitz, Alvin Solomon**

by Ronna & Clay Spitz

#### **Michael Spolane, Renee Spolane**

by Yvonne & Ronny Spolane

## LIFECYCLE EVENTS

### BIRTHS

**Josephine Shae Danna**, daughter of Sloane & Joseph Danna; granddaughter of Rita & Steven Engelhardt, Cheryl Verlander & Chuck Bracht, Marion Danna, Kay Danna; great-granddaughter of Claudia Verlander and Mary Romeo

**Jack Hudson Friedlander**, son of Lisa & Michael Friedlander; grandson of Barbara & Jim Rubenstein, Fredda & Gary Friedlander; great-grandson of Paula Friedlander, Ruth Steinfeld

**Margaux Stella Gustafson**, daughter of Jenny & Eric Gustafson; granddaughter of Sara Speer Selber, Ronna & Mandy Selber, Stephane & Paul Gustafson; great-granddaughter of Mandel Selber Jr, Joyce Fleiss

### DEATHS

**Henry Bercutt**, father of Tisa & Jay Scot Bercutt, Pamela Anne Bercutt; grandfather of Dylan Bercutt, Dustin Bercutt, Amy Williams, Bram Lowenstein, Coby Lowenstein

**Mary Nell Bleeker**, mother of Marilynne & Alford Bleeker, Joyce Ann & Delmer Dee Bleeker, Wanda Nell Cockerham, Vondale & Joe Bob Mann; sister of Jo Shull, Lonnie Miller; grandmother of nine; great-grandmother of six

**Michelle Roth Glaben**, wife of Barry Glaben; mother of Hayley Glaben & Mitchell Robbins, Blake Glaben; daughter of Evelyn Roth; sister of Robin & Rodney Roth, Lynn & Jason Roth; daughter-in-law of Frieda & Max Glaben; sister-in-law of Linda & Phillip Glaben, Shari & Norm Becker

**Andy Olin**, husband of Emily Olin; father of Grace and Emma Olin; son of Hazel & Tommy Olin

**Fay Patricia Slusky**, mother of Sharon & Elliott Slusky, Lisa & Harvey Slusky; grandmother of Robyn Slusky, Julie Slusky & Brogan Brousseau, Rachel Slusky, Sam Slusky

**Rachelle "Shelly" Stalarow**, wife of Harvey Stalarow; step-mother of Hilary and Staci Stalarow

### A Notice About Bereavement Communications

Bereavement notices for our Temple family are distributed with the permission of the deceased's family, and the timing of these notices is dictated by the family's request. Of course, each family grieves in its own way, and we are grateful for our congregation's patience and understanding with different families' preferences about how their loss is publicized.



### Programming at Emanu El

As Congregation Emanu El gradually migrates back to a robust program calendar, we are currently able to offer three kinds of programs to our community: in-person, online-only and hybrid. The definitions of these categories are as follows:

- **IN-PERSON.** Available for in-person attendance only. These offerings will not be livestreamed or broadcast for online audiences.
- **ONLINE-ONLY.** Designed for viewing and participation on Zoom or on one of our digital platforms (Facebook, YouTube, etc.) only. Please note that, for privacy reasons and contractual considerations, some of our online-only programs will be available for live viewing only and will not be accessible for re-broadcast after the event takes place.
- **HYBRID.** These programs include opportunities for attendees to participate in person or digitally, via Zoom or one of our live-streaming platforms.

When reviewing our program calendar, please make note of any registration requirements (RSVPs may be required), and whether the offering you wish to attend will be offered in-person, online-only, or in a hybrid format. Taking a few moments to confirm these details will help ensure the excellence of our programming and will help us to provide a positive experience for all participants.

If you have a suggestion for a program, or any questions about the details above, please contact Program Director Jason Plotkin at [jasonp@emanuelhouston.org](mailto:jasonp@emanuelhouston.org) or 713-535-6414.

### Young Professionals: A Night with Pam Schuller (in-person) Thursday, October 7, 7:00 p.m.



Comedian **Pam Schuller** is relentlessly funny. Her observations on disability, mental illness, dating, family, and past misadventures have led to brutally honest confessions about what it's like being 4 foot 6 (and a half) and having a whole lot of Tourette Syndrome.

Join the Emanu El Young Professionals as we welcome Pam for an evening of comedy and storytelling. You may know her from BuzzFeed and Dr. Mike Videos, this comedian is known for her use of storytelling, laughter and improvisation to inspire communities to a new understanding of inclusion.

To help us plan, please register at [emanuelhouston.org](http://emanuelhouston.org).

### Self-Care Wellness Check-In (digital) Tuesday, October 19, 7:00 p.m. - 8:30 p.m.

Join Jewish Family Service (JFS) and Emanu El for a self-care wellness check-in led by Gittel Francis, community intervention specialist.

Many of us would not hesitate to help someone in need. It is more challenging to care for and help ourselves.

Join us as we learn tips and tools how to create wellness and self-care check-ins. You will have a chance to share your ideas and gain from group sharing of the joys and joys of life.

This gathering will be held on Zoom and will not be recorded in order to provide a safe space for participants. To help us plan accordingly, we ask that you register at [emanuelhouston.org](http://emanuelhouston.org) and a Zoom link will be sent out prior to the program.

For more information, contact Jason Plotkin at [jasonp@emanuelhouston.org](mailto:jasonp@emanuelhouston.org) or 713-535-6414.

### An Online Murder Mystery! (digital) Sunday, October 24, 7:00 p.m.

We need your help solving a murder mystery!

It's the 1920's in Chicago at the height of the mafia's stranglehold on the city. In the midst of the battle between rival families, one of the family bosses has been murdered! Suspects abound from both the murdered boss' crime syndicate as well as from rival families. Everyone is a potential suspect, even his wife and secret mistress.

The lead detective that was working the case has disappeared as he was getting to close to the unveiling the two killers' identities. With pressure from a corrupt Mayor's office who was known to associate with the slain crime boss, the chief has assigned your team (which is your household and up to one other household) to pick up the case to try and solve this before the killers leave town.

Using evidence, you must solve the murder by the end of the game. Eliminate suspects by going through the evidence until you figure out who the two killers are.

Join us on Zoom to take part in the game! Participants are encouraged to hop on the call by 6:45 p.m. to test their technology and to schmooze with other participants. It is strongly advised to have two devices handy during the course of the game.

To register, visit our website or find the link in synagogue

*continued next page*

communications. A Zoom link will be sent out roughly 60-90 minutes before the game to all registered participants.

For more information, contact Jason Plotkin at [jasonp@emanuelhouston.org](mailto:jasonp@emanuelhouston.org) or 713.535.6414.



**Mental Health First Aid (digital)**  
**Tuesdays, October 26 & November 2,**  
**6:00 p.m. - 9:00 p.m.**

Congregation Emanu El has partnered with Jewish Family Service (JFS) regularly to offer Mental Health First Aid (MHFA) training as part of our congregation and the Houston Jewish community's overall commitment to mental health.

In the MHFA course, you will learn risk factors and warning signs for mental health and addiction concerns, strategies for how to help someone in both crisis and non-crisis situations, and where to turn for help.

MHFA teaches about recovery and resiliency – the belief that individuals experiencing mental health challenges can and do get better and use their strengths to stay well.

Participants will need to complete Part I online prior to taking Part II, which will be offered on consecutive Tuesday evenings. The Tuesday evening sessions will be led on Zoom by MHFA Certified instructors, and there will be short breaks during the trainings.

Once participants complete the course, they will receive a certificate of completion valid for three years from the date of the course. Continuing education credits are also available with prior request.

To register for the above two-part class or for a list of additional MHFA trainings available this fall through JFS, visit our web calendar at [emanuelhouston.org](http://emanuelhouston.org).

**Election Day at Emanu El (in-person)**  
**Tuesday, November 2, 7:00 a.m. - 7:00 p.m.**

We are excited to share that for a second straight year, Congregation Emanu El will serve as a polling location for those who reside in Harris County on Election Day. While we encourage you to vote early, if you decide to vote on Election Day, Congregation Emanu El will be available to you.

For more information about early voting, voting locations, hours of operations, sample ballots and more, please visit [harrisvotes.com](http://harrisvotes.com).

**Tot Shabbat with Ellen Allard (in-person)**  
**Friday, November 5, Dinner at 5:45 p.m.,**  
**Service at 6:30 p.m.**



Families with young children are invited to join Congregation Emanu El for our monthly Tot Shabbat to share a special Shabbat led by a member of our clergy and geared toward families with little ones, ages 0-6.

Join us for Tot Shabbat by visiting our web calendar and registering online at [emanuelhouston.org](http://emanuelhouston.org). Please note that due to capacity considerations, advance registration is required and only open to Becker or Emanu El families.

Our Tot Shabbat will begin with a picnic dinner outside at 5:45 p.m. Families are encouraged to bring picnic blankets or something comfortable to sit on.

An optional dinner will be provided by Houston Catering Concepts and feature pasta with options to enhance your pasta offering. Gluten-free and vegetarian options are available. The cost of the dinner is \$5 per person.

Following dinner, we'll move to the playground for a special musical Tot Shabbat as nationally known musician **Ellen Allard** will join us.

Dubbed "The Queen of Jewish Early Childhood Music," Allard has been performing children's concerts for decades at synagogues, festivals and more – encouraging children and parents alike to join in on the singing, dancing, moving and grooving. Simply put, you won't want to miss it!

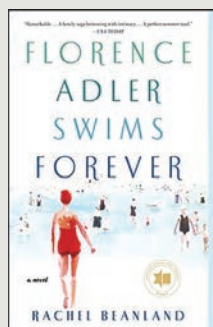
For more information on our Tot Shabbat programming, please contact Jason Plotkin at [jasonp@emanuelhouston.org](mailto:jasonp@emanuelhouston.org) or 713.535.6414.

This program is generously underwritten by the Alex & Willie Mae Goldstein Children's Fund.

*continued on page 13*

# Sisterhood News & Happenings

October – November 2021



## BOOK REVIEW:

*Florence Adler Swims Forever*

by Rachel Beanland

**THURSDAY, NOVEMBER 11, 7:00 PM (digital)**

Sisterhood hosts bi-monthly book reviews throughout the year that are open to the public. November's book review will be led by our congregant, Diane Puschett.

PLEASE NOTE: This book review will be held by Zoom, and the information to access will be emailed ahead of time to those who register.

A summary of our November book selection can be found below:

Atlantic City, 1934. Every summer Esther and Joseph Adler rent their house out to vacationers and move into the small apartment above their bakery, where they raised their two daughters, Fannie and Florence. Florence has returned from college determined to spend the summer training to swim the English Channel. Her sister Fannie, pregnant again after recently losing a baby is on bed rest at Atlantic City Hospital for the duration of her pregnancy and has left her daughter Gussie in Esther's care. At the same time, Joseph has offered hospitality to Anna, a young woman whom he helped emigrate from Nazi Germany.

Esther wants to keep her daughters close and safe, but some matters are beyond her control: Fannie's risky pregnancy-not to mention her always-scheming husband Isaac-and the fact that the heir of a hotel notorious for its anti-Semitic policies seems to be in love with Florence.

When tragedy strikes, Esther makes the decision to hide the truth – at least until Fannie's baby is born – and pulls the family into an elaborate web of secret-keeping and lies, bringing long-buried tensions to the surface that reveal how quickly the act of protecting those we love can turn into betrayal.

Based on a true story, this family saga is a breathtaking portrait of just how far we will go to protect our loved ones and an uplifting portrayal of how the human spirit can endure – and even thrive – after tragedy.”

To help us plan for our book reviews and to receive communications about future book reviews, we ask that you kindly **RSVP by Wednesday, November 10**, by completing the form online, or by contacting the Sisterhood at [sishood@emanuelhouston.org](mailto:sishood@emanuelhouston.org) or 713.529.5771, ext. 233.

## Afternoon Mah Jongg

(in-person)

**Mondays, October 11 & November 8, 1:00 p.m.**

Play Mah Jongg at Emanu El and be a Winner.

Crack your card open, and bam, watch the winds blow jokers your way.

All are invited to join us on the second Monday of the month at 1:00 p.m. for an afternoon of fun with snacks and friends. Bring friends and enjoy!

We plan to meet in the Stillman-Lack Library unless our numbers require a move.

To help us plan accordingly, please **RSVP by Thursday, October 7** for the October gathering and **Thursday, November 4** for the November gathering, either online by visiting our web calendar at [emanuelhouston.org](http://emanuelhouston.org) or by contacting the Sisterhood office at 713.529.5771, ext 233.

## Judaism Through the Arts

**Tour of Museum of Southern Jewish Experience (digital)**

**Wednesday, October 13, 11:00 a.m. - 12:00 p.m.**

Join Sisterhood to experience a tour of the recently opened Museum of the Southern Jewish Experience located in New Orleans. This docent-led Zoom tour will explore the fascinating history of Jews in the South.

Although representing less than one percent of southern states' population, southern cities and towns have had Jewish mayors, sheriffs, council members and civic leaders in high numbers. This unique museum is the answer to the often-heard comment, "I didn't know there were Jews in the South!"

The cost is \$10 for this Zoom program. Please RSVP to the Sisterhood office at 713.529.5771, ext. 233 or [sishood@emanuelhouston.org](mailto:sishood@emanuelhouston.org) by **Monday, October 11**. Registration is also available at [emanuelhouston.org](http://emanuelhouston.org).



## Women's Day (digital) Inspiring Women Facing Challenges Wednesday, November 17, 10:00 a.m.

Join Sisterhood for a special Women's Day event as we welcome two dynamic women from the diverse Houston community who will share their personal stories from immigration adversities to subsequent triumphs.

**Y. Ping Sun** is widely recognized in Houston and around the globe for her generous spirit and a strong commitment to community engagement. Raised in Shanghai during the Cultural Revolution in China, she persevered in school while teachers, scholars and intellectuals were denounced. She graduated from Beijing Language and Culture University and later attended Princeton University on a full scholarship, where she graduated cum laude. Sun then earned a law degree from Columbia University. She came to Houston in 2004 when her husband, David Leebron, became president of Rice University. She currently serves as a University Representative and is of counsel with the law firm of Yetter Coleman, LLP.

**Dr. Joanna Molina Razavi** is a cardiac electrophysiologist at the Texas Heart Institute and Baylor College of Medicine. A native of Tijuana, Mexico, she attended medical school at Universidad Autonoma de Baja California after obtaining the highest score statewide in the medical school entry examination. Dr. Razavi then completed a residency at Baylor College of Medicine and became the first female international graduate of the Texas Heart Institute Fellowship program and the first Hispanic woman to pursue the additional electrophysiology subspecialty training program of cardiology – a highly competitive path few women choose. She has garnered an international reputation as one of the best teachers in her field.

Please don't miss this unique opportunity to learn more about these two inspiring women!

There is no cost for this Zoom program. Please RSVP to the Sisterhood office at 713.529.5771, ext. 233 or [sishood@emanuelhouston.org](mailto:sishood@emanuelhouston.org) by **Monday, November 15**. Registration is also available at [emanuelhouston.org](http://emanuelhouston.org). The Zoom link will be sent to registrants prior to the event.

## MEMBERSHIP NEWS

### Welcome Our Newest Members

We are pleased to welcome the newest members to our congregational family. Please be sure to introduce yourself to our newcomers as they become a part of our community.

**Adam Bocchetto, son Zechariah**  
**Sarah Branfman Bond & Steve Bond**  
**Amanda Croushore & David Goodman,**  
**children Samuel & Caroline**  
**Judy & Mike Dane, daughters Mia & Layla**  
**Danielle Farah & Asher Kohn, daughter Sepideh**  
**Andrea Farb**  
**Brian Franks**  
**Robert Friedberg**  
**Barry Glauben**  
**Jacqueline & Kevin Goldberg, children Eli & Sophie**  
**Joy Ann Greenberg**  
**Marisa Hilliard & Evan O'Neil, daughter Ruby**  
**Lynn & Rabbi Bob Loewy**  
**Sarah & Seth Miller, sons Elliot & Gideon**  
**Meredith-Leigh Pleasants & Ace Factor**  
**Kimberly & Tal Raphaeli, children Leora & Grant**  
**Martin Reichenthal**  
**Nicole & Cory Schloss, son Asher Harrison**  
**Emily & Steven Shannon, son Levi**  
**Lana Rabinovich-Slootsky & Leo Slootsky,**  
**children Miri, Adele and Jacob**  
**Erin & Jacob Slosburg, children Philip & Esther**  
**Lily Celeste & Ben Spector**  
**Lacey & Todd Wallerstein**

New members will be shared in the *Bulletin* regularly. Know someone interested in becoming a part of our community? New to town or looking to find a way to connect with Emanu El? Contact Jason Plotkin at [jasonp@emanuelhouston.org](mailto:jasonp@emanuelhouston.org) or 713.535.6414.

## BECKER SCHOOL SCHOOL NEWS



### Becker Welcomes Students Back for 21-22 School Year

Our Becker School opened its 2021-22 school year on August 25. As we started our school year, our teachers wanted to share their "I Will Be Someone . . ." statements with their friends, families and the Becker community. Miss Alex shares her statement as part of a video released to the Becker community.



## Building Legacy through Shared Blessings

Members of Congregation Emanu El are immensely fortunate to be part of a community where so many have thoughtfully made plans to share their financial resources with the Temple, beyond their lifetimes. By establishing Endowment Funds, supporting current Endowment Funds, and helping grow our Endowment through legacy gifts and planned giving, these families and individuals demonstrate the continuing importance of meeting vital, increasing needs for our congregation's future. Although those who have committed to the long-term sustenance of our spiritual home are at various ages and stages of life, they all share the common desire to ensure they can make a difference when it matters most.

"Five generations of Jewish families created Congregation Emanu El's amazing legacy," explains Rabbi Oren Hayon. "Through their generosity – and that of those who followed them – we have built an Endowment that helps make our sacred work possible. Our Endowment Funds are the backbone of the congregation. Their growth

will ensure our community's continued vitality for generations to come."

"You don't have to be a certain age or have significant resources to plan how you want to leave a legacy," explains Anna Shabtay, the Temple's new Director of Congregational Advancement. "Legacy giving, of any size, can be designed to match your personal circumstances. The act of creating a lifelong legacy empowers you to complete the work of your heart, and to enjoy the peace that it brings. You are assured that what you believe in most will continue, and our congregation's Endowment and Jewish future will be bright."

In the last five years, Emanu El has secured over 60 legacy gifts, the majority going to the Temple's General Fund or other designated funds in our Endowment. Several of these donor stories are highlighted below. By sharing their thoughts on why they became a part of this effort, we can better appreciate the values and priorities that make them who they are and how they hope to be remembered.

"Leaving a planned gift is a beautiful way to give, and we believe everyone should consider a long-term approach, no matter how large or small. For us, it was easy to make a gift from our IRA. If we've done things right in regards to saving and planning for our own lifetimes, there should be enough to be philanthropic for the next generation. The Temple was so supportive during my brother's illness, I wanted to make sure that others could benefit from the same support system in the future. It's not just about now . . . it's what I can do for later. Emanu El must be cared for after I am gone."

**Rachael Tobor**

**Rachael Tobor, pictured with her family in August 2020 as they participated in the first B'nei Mitzvah back in the building during COVID-19.**



*continued next page*



## *Guidance from our past, growth for our future*

“We believe that planned giving is an ongoing conversation about the blessings we can share. We hope that institutions in our community will live on past our lifetime and that the values we hold most dear to us will be carried on through our gifts. With so much uncertainty in the world today, this is also a way to provide continuity and stability. The legacy of leadership and outreach is a hallmark of Emanu El. Our Endowment Giving was modeled from the generation who preceded us . . . L’Dor V’Dor drives us and lives on. We are so happy and grateful to be part of this ongoing effort.”

Anonymous

“As an independent writer and editor, I’ve had the honor and privilege to meet and professionally interview many individuals and donors who’ve shared inspirational and unforgettable stories about making a difference through their actions, leadership and resources. I also watched my parents quietly but impactfully support organizations that mattered, which influenced my philanthropic philosophy. I believe we want people to see us not just for who we are, but for the best that we can be – so I decided to establish a donor advised fund which leaves a percentage of my estate to the temple. As Emanu El has been my life-long spiritual home, it gives me comfort to know that I am making an Endowment Gift that will last beyond my lifetime.”

Nancy Parkans Ehrenkranz



**Rabbi Hayon unfurls the Torah into the hands of parents during a Consecration Family Ed program a few years ago. Consecration is the start of one’s formal Jewish education and a major milestone celebrated across multiple generations of Emanu El families.**

*continued next page*

“I’ve had the opportunity to serve as the congregation’s treasurer, and a member of its Investment Committee for almost 20 years. In turn, I have a knowledgeable understanding of the demographics for Jewish institutions and the need for solid Endowment Funds to insure their and our future. At Emanu El, more than half our funding comes from members who are over 65, so we need to make sure we aren’t leaving a burden for our younger congregants. I also believe it’s important to participate in legacy giving for family, cultural and historical reasons . . . but mostly, to know that our beloved Temple will continue to thrive in perpetuity.”

Dean Putterman



Emanu El has a longstanding commitment to social action work through programs that bring multiple generations of congregation together. Kids’ Meals (pictured) is a social action project that has been in place for over a decade at Emanu El and is generously funded by the Ed Wayne Hunger Fund.



## Be a Part of It

On any financial level, we all have the capacity to impact the future. For additional information on contributing to the Temple’s Endowment through planned giving and legacy gifts, please contact Anna Shabtay at [annas@emanuelhouston.org](mailto:annas@emanuelhouston.org), or scan the QR code with your cell phone camera.

“I grew up in the former Soviet Union and although I was Jewish, religion was never practiced. When I reached a point in my life that intertwining family and faith was a high priority, Emanu El was there. My children attended school here, we regularly attend weekly services together and to all of us, this is our spiritual home. For my kids, it will be their lifelong spiritual home. Given the invaluable role Emanu El plays in our family, it makes sense to leave a planned gift that invests in its future. Our legacy gift recognizes our place here, is aligned with our long-term values, and provides us with a feeling that transcends time.”

Greta Pliskin

Congregation Emanu El would like to graciously thank those who have made provisions in their will or estate for a Legacy gift to the Temple. Their support ensures the future of Congregation Emanu El as their contributions will live on in perpetuity.

Anonymous  
Jeri Amundsen & Arthur Feldman  
Susie & David Askanase  
Karen & Jeff Basen-Enquist  
Lisl Bermann\*  
Barbara & Mark Brookner  
Ira Brown\*  
Laura Mayer Cyprow  
Dee Dee Dochen  
Helen Dreyfus  
Nancy Parkans Ehrenkranz  
Bernice Feld\*  
Steven Fenberg  
fredi & Paul Franks  
Stuart Gaylor  
Anne & Don Graubart  
Rachel & Adam Gutow-Ellis  
Sandy & Don Harris  
Julie & Rabbi Oren Hayon  
Ralph Herring  
Rabbi Samantha & Matt Kahn  
Barbara & Raymond Kalmans  
Elyse & Lewis Kalmans  
JoAnn Klar  
Elizabeth & Matt Krohn  
Pamela Kutner  
Jennifer & David Lamden  
Laurie Lee  
Mark Lensky\*  
Bruce Lessey  
Cheryl & Haran Levy  
Brenda Liebling-Goldberg & Family  
Myra Lipper  
Nicole Longnecker

Rebecca & Jost Lunstroth  
Kathy & Garey Marks  
Benjamin Miller  
Joan Morgenstern  
Ethel Morris\*  
Jeanette Nestvold  
Kathy & Steven Parven  
Ellen Hurwitz Penner\*  
Greta Pliskin  
Richard Plumb\*  
Adam Pollock  
Marilyn Presser  
Becky Proler & Gretchen Gemeinhardt  
Dean Putterman  
Sheryl & Ernest Rapp  
Lila Rauch  
Robin & Rodney Roth  
Cheryl & Michael Rubenstein  
Marlene Rubin  
Richard Schechter  
Esther Shelby\*  
Rabbi Pam & Jeff Silk  
Helen & Andy Spector  
Linda Susman  
Donna & Philip Tenenbaum  
Rachael Tobor & Valerie Turner  
Linda\* & Rabbi Roy Walter  
Eileen & Richard Westerman  
Dolores Wilkenfeld  
Becky & Joe Williams  
Shelly & Vic Wisner  
Ed Wulfe\*

\*Of Blessed Memory

If you have made a provision in your will or estate and you do not see your name or if you are interested in learning more about how to add your name to our Legacy Circle, please contact Anna Shabtay, Director of Congregational Advancement at [annas@emanuelhouston.org](mailto:annas@emanuelhouston.org) or 713.987.3316.



### President's Remarks

Remarks delivered by Emanu El President Jeri Amundsen during the Rosh HaShanah Unplugged service on the evening of September 6.



Jeri Amundsen

Good evening,

It is my honor to join you all tonight to share the beauty of our Rosh Hashana service. Wherever you are sitting, in your living room, a hotel room or here in the Barish Sanctuary, together we will usher in the new year together. I want to welcome all of you – those who are joining us for the first time as new members, our long-standing members, and

our guests. And, as a parent of a Tulane student who evacuated New Orleans last week, I want to offer a special warm welcome to those of you impacted by Hurricane Ida. We are glad to be with you tonight.

Our tradition teaches us that Rosh HaShana is both a time of rejoicing and introspection, a time to celebrate the completion of another year while also taking stock of one's life. We take an inward glance at ourselves and reflect on how we can do better and be better. As I began preparing this message for you tonight, I was guided by that same lens of reflection and celebration as I looked back on this past year at Emanu El.

During the past 16 months, it has been an extraordinary honor and privilege to serve our congregation as President. Working with our dedicated clergy, staff and volunteers to support Emanu El as a comforting, joyful, sacred space has been an unforgettable and inspiring experience.

It has also given me a front row seat to view the many ways our members connect to our synagogue and to their faith: through social action projects, performing arts, adult education, committee work, financial guidance, life cycle events, Torah study, and of course, worship services. From my front row seat, I've seen the happiness and solace our members get from these connections. Many of those opportunities were infringed upon in some way this past year, but Emanu El endeavored to continue as many of those programs as possible with multiple ways to access our programs and even created new ways to engage with our community.

For all of us, the circumstances of the past year triggered feelings of uncertainty, anxiety, frustration, loneliness, and loss. In a year hampered by fewer face-to-face moments, and more civil discord, it has never been more clear how much we need each other, and how important our congregational community is to cultivating meaningful relationships in a reassuring space.

Looking ahead, Emanu El's leadership continues to build on the foundation laid by our founding families: to be a vital, vibrant religious community, dedicated to the survival of Judaism and the Jewish people. Meaningful connections are key to sustaining and growing our

vibrant community: Connections with our clergy, connections with G-d, and connections with each other. We must also strive to ensure that every Jew who walks in our doors or clicks on our Zoom link can bring their whole self to our sacred space, so they can connect with their faith and their community. Our Board of Trustees spent a lot of time exploring this theme this year and, on Yom Kippur afternoon, we will learn and talk more about these goals for creating a place of sacred belonging for everyone at Emanu El.

As we prepare for Rosh HaShanah, let's celebrate our longtime friendships, our new relationships, and the opportunity to make new connections this year.

May the strength of our Emanu El community bolster you and provide you opportunities for prayer, spirituality, learning and meaningful connections.

My family and I wish you all a sweet new year. Shana Tova.

### Medicare Prescription Drug Plan (PDP)

**ATTENTION SENIORS:** Your current PDP sponsor should have or will provide you with an 'Annual Notice of Change' about your current prescription drug plan for 2022. Review that notice, which describes changes in your plan, including changes to the premium, co-pay, and the drugs covered. If you are satisfied with the changes and want to remain in that drug plan, you do not have to do anything to stay in that plan for 2022. However, you might be advised that your current plan will be discontinued or merged with another plan for 2022. If you are in doubt as to whether or not your current plan is the best plan for you, you may want to review your options before accepting that change or staying with your current plan. You have from **Friday, October 15 to Tuesday, December 7, 2021**, to make changes to your Medicare prescription drug coverage. To change your prescription drug plan, **you must sign up by Tuesday, December 7**. The change will be **effective January 1, 2022**.

If you want to review your current Part D plan, the Emanu El Social Action Committee will provide a trained volunteer to assist your analysis of alternatives.

If you know how to contact the person that helped you in the past, please contact them directly. If you are not sure and/or would like a volunteer to contact you between **Friday, October 15 and Tuesday, December 7**, please call Cynthia Pleason at 713.855.9260 and leave your name, phone number and email address to be contacted about scheduling a convenient time to assist you.

When contacted by a volunteer, you will need to have available the following information:

1. Your MyMedicare username & password. If you do not have an account, you will need to create one at [mymedicare.gov](https://mymedicare.gov). The volunteer can assist you in doing so
2. Your new Medicare number

*continued next page*

3. Your drug list: name, dosage and frequency of each
4. The name of your current insurance plan, if any
5. The name of your preferred pharmacy
6. Your zip code

We ask that you do not wait until the last minute to make your call. This year because of COVID, we do not anticipate person to person appointments at this time. All assistance will be provided by email or phone.

## Gathering Place Seeks Volunteers for Re-Launch

Are you interested in becoming more involved with volunteering at the Temple, while also having an impact on the community? Consider becoming a member of our Gathering Place Care Team.

For over 10 years, a dedicated group of volunteers has met on the second Monday of the month, hosting a gathering of adults with memory loss and their

care givers, providing companionship and fun for individuals living with memory loss. Many of the same volunteers began volunteering as members of our AIDS Care Team and have continued their service as part of our Care Team.

Volunteers provide a hot lunch for our participants and arrange for activities such as arts and crafts and musical entertainment, all designed to give caregivers a respite for a few hours. CarePartners, an organization that provide support, education and resources to caregivers and quality care for those living with memory loss and other challenges of aging, provides training to our volunteers and provides support for our team.

We plan to resume the Gathering Place activities in November 2021, following the COVID safety guidelines of both the congregation and CarePartners. If you are interested in becoming a member of our Care Team and helping to create a safe and welcoming environment for adults with memory loss and their care givers, please contact Phyllis Berman at 713.253.6448.

---

## UPCOMING PROGRAMS AT EMANU EL *continued from page 5*

---

### *Dare to Speak: Defending Free Speech for All* (hybrid)

Monday, November 15, 12:00 p.m.



Suzanne Nossel

The Evelyn Rubenstein JCC's Ann and Stephen Kaufman Jewish Books & Arts Festival will be making a stop at Congregation Emanu El as we partner to host **Suzanne Nossel**, author of *Dare to Speak: Defending Free Speech for All*. The Emanu El Sisterhood is a presenting partner in this program.

The CEO of PEN America, Suzanne Nossel, a leading voice in support of free expression, delivers a clear pathway for maintaining honest debate that can be both open and respectful. This necessary guide provides the tools needed to maintain a democratic debate that is open and takes into account diverse opinions and backgrounds in a changing country. Perhaps no topic is more timely, than that explored in this playbook.

For more information and tickets, visit [www.erjcc.houston.org/bookfestival](http://www.erjcc.houston.org/bookfestival). An opportunity to be an online participant with a special rate will also be available through the festival.

### Emanu El Running & Walking Group (in-person)

Wednesdays at 7:45 a.m.

Calling all runners! Calling all walkers!

The New Year is here, the cool weather is soon to be upon

us, and the season of walking and running events has started! Whether you are a seasoned runner looking to set a new record or a walker looking to enjoy a nice morning walk with friends, this is a group for you. All walkers and runners of any age and ability are welcome!

The "EE Runners" started last spring as a group of like-minded people wanting to enjoy a nice lap around Rice University to start the day. Since then, it has organically developed into a social group promoting fellowship and community while exercising and enjoying the outdoors.

**Every Wednesday morning**, the EE Runners meet for an invigorating lap on the trail around Rice University. The groups step off at **7:45 a.m.** from the west parking lot.

In addition to the weekly runs, the EE Runners also hosts walks and runs in some of the most scenic parks around the city. They range from a walk along Buffalo Bayou to running on the trails at Memorial Park. The EE Runners also participate in organized events including the annual Rodeo Run, Houston Half Marathon, and the Chevron Marathon. These events are family friendly and offer different options in distances both for walking and running. All walkers, runners, friends and family are welcome to participate.

The group's next event will be the Houston Half Marathon/10k which takes place on **October 31**. This event is open to both walkers and runners and offers distances of 10k and 13.1 miles. Visit our web calendar at [emanuelhouston.org](http://emanuelhouston.org) to register and walk or run with the team. Follow the steps to register, and you will be automatically added to the team.

For more information, please contact David Kaufman at [hdavidkaufman@gmail.com](mailto:h davidkaufman@gmail.com).





# Helfman Religious School

## 2021-22 Consecration Class

The 2021-22 Helfman Religious School consecration class was celebrated during a special Simchat Torah service on Sunday, September 26 in the Barish Sanctuary. Congregation Emanu El would like to welcome our youngest learners to their formal religious education.

# HELFMAN RELIGIOUS SCHOOL

## CONSECRATION CLASS OF 2021-22



Cantor Rollin Simmons



Rabbi Oren Hayon



Rabbi Pamela Silk



Rabbi Joshua Fixler



Aiden Mayer



Georgia Lurie



Evan Lichman



Josiah Kwartler



Caia Kottler



Zev Kass



Hazel Kass



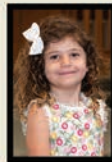
Henry Hittner



Isaac Gordon



Amalia Gordon



Naomi Nash



Andrew Szucs



Theo Moore Sussman



Zachary Solera



Charlie Snelgrove



Natalie Rubenstein



Evie Rubenstein



Maebyn Yoburn



Sidney Witus



Honey Gibbs Vincent



Thomas Turowsky



Danielle Tenenbom



Cathy Winter



Eli Schneider



Blake Michelle Seff



Eli Roth



Isaac Plotkin



Morgan Miles Pickel



Reagan Pfeil



Willoughby Opalek Owen



Ava Nicolayevsky



Avery Muscat



Todd Weiss



Stefani Carlson



Graham Pollock



Roxana Katz



Shaun Libby



Ethan Elam



Charlotte Cort



Etta Coleman-Merfish



Elizabeth Cohen



Marisol Bennett



Harris Bronstein



Beverly Shapiro

Not Pictured: Reese Giga, Riley Giga, Jack Grefe, Ledger Hirsch, Phoebe Horan, Gideon Miller, and Oliver Pittsford



### Get Social With Us!

Did you know Congregation Emanu El is on Instagram? In addition to our active Facebook pages, be sure to follow us on Instagram to catch snap shots of happenings around the synagogue. From camel sightings to social action, a thriving youth group to clergy in action and more!

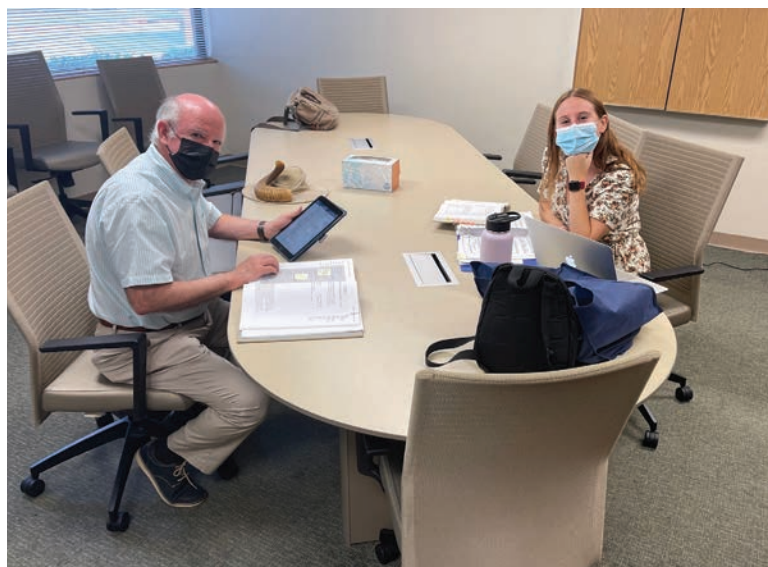
Find us on Instagram at [instagram.com/emanuelhouston](https://www.instagram.com/emanuelhouston) or if you are already a member, find us at @emanuelhouston. And yes, please feel free to “check-in” at Emanu El when you are here for events and happenings!



### Rabbi Hayon Chairs Refugee Services Program Committee for Interfaith Ministries

Rabbi Hayon currently serves as the chair of the Refugee Services Program Committee for Interfaith Ministries for Greater Houston.

Along with fellow IMGH leaders, Rabbi Hayon listens to Ali Al Sudani, Chief Programs Officer for IMGH, as the group discusses an upcoming meeting planned to address needs for incoming refugees from Afghanistan. Emanu El will be sharing resources to help welcome Afghan refugees into Houston and learn together as we explore the challenges that refugees face when coming to the United States.



### New Orleans Clergy Prep for Informal High Holy Days at Emanu El

Rabbi Bob Loewy (left) and Cantorial Soloist Jordan Lawrence of Gates of Prayer in Metairie, La. reviewed their cues ahead of an informal New Orleans Rosh HaShanah morning service. The service was held in the Proler Chapel at 9:30 a.m. on Rosh HaShanah morning. A team of volunteers from New Orleans greeted guests as they arrived at Emanu El and, through the generosity of our preferred caterers the NY Bagel Shop, all guests walked home with challahs to usher in the new year.

### Dr. Peter Hotez Speaks at Emanu El for Shabbat Shuvah

Dr. Peter Hotez spoke at Shabbat Shuvah services this year. During his remarks, Dr. Hotez shared how he learned the concept of tikkun olam (repairing the world), and how it has motivated him to focus his scientific pursuits toward humanitarian goals. The video of Dr. Hotez's presentation can be found on the Emanu El YouTube channel.





We appreciate the thoughtfulness of those who remember and honor their friends and loved ones through their generous contributions through August 13, 2021.

**ABLON FUND FOR THE CREATIVE ARTS**

To provide creative arts programs

In Memory of **Geraldine "Geri" Lee Epstein Hooks**

Juli & Alan Scheinthal & Family

**ACCESS FOR ALL FUND**

To make Emanu El accessible for physically challenged people

**A Donation**

Tyrone Willis

In Honor of

**The Anniversary of Terri & Barry Brown**

**The Birthday of Paul Franks**

Caren & David Cowan

In Memory of

**Michelle Roth Glaubien Mark Kalish**

fredi & Paul Franks

**Sidney Lowitz**

Madeline Lowitz

**William Tarnopol**

Pat & Aaron Fradkin

**AUBREY & SYLVIA FARB COMMUNITY SERVICE FUND**

To support small and emerging organizations that improve life for underserved Houstonians

In Honor of

**The Birthday of Shelly Cyprus**

Susan & Ed Septimus

**Paul Franks**

Kathy & Stephen Parven

In Memory of

**Mark Kalish**

Marsha & Mark Klaff

Eric & Carol Adatto Nelson

**BECKER EARLY CHILDHOOD FUND**

To provide and enhance Becker School programs

In Memory of

**Sarah & Beau Pollock & Family**

Emily & Josh Schaffer

**BECKER EARLY CHILDHOOD SCHOLARSHIP FUND**

To provide Becker School scholarships

In Honor of

**Sarah Williams**

Adam Williams

In Memory of

**Mark Kalish**

Ellen Kalish & Raime &

Mark Estes

**BILL & JOAN SPITZ PRESIDENTIAL LEADERSHIP FUND**

To strengthen the vision of Emanu El's leaders

In Memory of

**Michelle Roth Glaubien**

Jeri Amundsen &

Arthur Feldman

**CERSONSKY CEMETERY BEAUTIFICATION FUND**

To beautify Emanu El

Memorial Park

In Memory of

**Michelle Roth Glaubien**

Joy & Dickie Pulaski

**CLERGY'S GOOD WORKS FUND**

To provide Emanu El's clergy with funds to help individuals in need and to support organizations that benefit the community

**A Donation**

Gene Chamblin

Ellen Wagnon

In Honor of

**Harriet & Stanley Brooks**

Tama & John Klosek

**The Clergy of Emanu El**

Lorraine Wulfe

**Rabbi Oren Hayon**

The Borden Family

Ricki Gerger

**The Anniversary of Terri & Barry Brown**

June & Julian Silverblatt

**The Speedy Recovery of**

**Lisa Mendelovitz**

**Lila Rauch**

Rozanne & Howard Rubin

In Memory of

**Michelle Roth Glaubien**

Cynthia Gilbert

Vivian & Stanley Lipman

Dr. & Mrs. Gary Nimetz

Sara Speer Selber

Dr. Todd & Betsy Siff

**Mark Kalish**

Rozanne & Howard Rubin

**Beatrice "Beadie"**

**Friedberg Lewis**

Tania & Rick Oshman

**Cary Robinson**

Beverly & Howard Robinson

**CONGREGATION EMANU EL BROTHERHOOD**

To enhance Brotherhood programming

In Honor of

**The Birthday of Alford**

**Bleeker**

Kathy & Stephen Parven

In Memory of

**Mary Nell Bleeker**

Jeff & Karen Basen-Engquist

Carol & Gary Brush

Kathy & Stephen Parven

Marlene A Rubin

**EDWARD WAYNE HUNGER FUND**

To feed the hungry of Houston

**A Donation**

Don Akens

Anonymous

Karen Arnold

Sara Astrich

Jacquelyn Barish

Charlotte Berkowitz

Stuart Cohan

Marsha & Joseph Cohen

Sharon & Herbert Cohn

Dee Dee Dochen

Diane Dover

Karen & Larry Feld

Carol & Larry Fradkin

Pat & Aaron Fradkin

Dorothy Furman

Sandy Gaitz &

Andrea Warner-Gaitz

Donald Gardner

Barbara Glave & David Wall

Brenda Liebling-Goldberg

& William Goldberg

Noel & Mickey Graubart

Harriet Grossman

Janis & Jake Isgur

Leah Lax & Susan Baird

Irv & Barbara Black Levine

Alana & Jason Levy

Brenda Lind

Joan & Robert Marshak

Joanie Murland

Jan Pasternak

Jeanne & Matt Pasternak

Janice Poplack &

Michael Epstein

Jennifer & Robert Reichek

Gayle & Richard Rockoff

Rozanne & Howard Rubin

Elaine & Salomon Schein

Shirley Schnoll

Nancy & Alan Shelby

Carol Tuttle

Marilyn Waldman

Irene Weingarten

Brian Wice

Donna & William Zhukovsky

In Memory of

**Michelle Roth Glaubien**

Cheryl & Haran Levy

& Family

Lorraine Wulfe

**Mark Kalish**

Marilyn Waldman

**FLORENCE & BEN BLUM LEADERSHIP FUND**

To send Emanu El leadership to URJ Biennials and to

underwrite leadership

programs and speakers

In Memory of

**Michelle Roth Glaubien**

Myra Lipper

**FREDELL LACK EICHHORN CANTOR'S MUSIC FUND**

To enhance musical

programming

In Honor of

**Sue Baum's Retirement**

Susan & Ed Septimus

**GENERAL ENDOWMENT FUND**

To provide for the general needs of Emanu El and its

facilities

In Honor of

**The Birthday of Paul Franks**

Carol Emery & Rich Skora

In Memory of

**Michelle Roth Glaubien**

Chris & Jeff Cohen

Danielle Kuperman

**GREENE FAMILY CAMP FUND**

To support Greene Family Camp

In Memory of

**Mark Kalish**

Randi & Scott Rubenstein

**Blanch Lipsky**

**Jack Selber**

**Louis Silverman**

Jennifer & Jeffrey Ross

**HAROLD REINGOLD RELIGIOUS SCHOOL FUND**

To enhance Helfman

Religious School

In Memory of

**Mark Kalish**

Stephanie & Todd Slobin

**Rachelle "Shelly" Stalarow**

Ephraim Shapiro &

Beverly Shapiro

*continued next page*

**JULIA KAPLAN RELIGIOUS SCHOOL ENRICHMENT FUND**

*To enhance Helfman Religious School programs*  
In Memory of  
**Charles Kaplan**  
Celine Kaplan

**JULIUS NATHAN MUSIC FUND**

*To provide musical programs*  
In Honor of  
**Sue Baum's Retirement**  
**The Speedy Recovery of Stu Baum**  
Rabbi Gene & Bobbye Levy

**LILLIAN PASTERNAK MITZVAH FUND**

*To support mitzvah projects that improve life for Houstonians*  
In Appreciation of  
**Emanu El's Staff**  
Tori Brooks

**RABBI ROY & LINDA WALTER ENRICHMENT FUND**

*To support spiritual and cultural enrichment*  
In Memory of  
**Michelle Roth Glauben**

Carol & Larry Fradkin  
Ricki & Milton Frankfort  
Richard Wolf

**Mark Kalish**

Lauren & Alan Gordon  
Gary & Starr Borden Wolf  
Seymour Rady, Sylvia  
Aronson Miller, David  
Kazdan

Barbara Rady Kazdan

**Rachelle "Shelly" Stalarow**

Sandy & Richard Jackson

**Linda Cohn Walter**

Celine Kaplan  
Gail & Larry Levinson  
Lanie & Jerry Rose  
Ellie & Jon Tetz  
Lorraine Wulfe

**RICKY SCHNURR CAMPERSHIP FUND**

*To provide Greene Family Camp scholarships*  
In Memory of  
**Mark Kalish**  
Cindy Bass Senior

**RIVA BURSTEN CARING CONGREGATION FUND**

*To support programs that assist people in the community*  
In Honor of  
**The Anniversary of Ellen & Marty Grabois**

**The Speedy Recovery of Stu Baum**

Susan & Ed Septimus

In Memory of

**Fay Colberg**

Susie & Joel Litman  
& Family

**Joyce Fishman Klein**

Myra Mayer

**Rachelle "Shelly" Stalarow**

Susan & Ed Septimus

**Solomon Stopnicki**

Susie Askanase

**ROBERT I. KAHN GALLERY FUND**

*To maintain and enhance the Robert I. Kahn gallery*

In Memory of

**Geraldine "Geri" Lee Epstein Hooks**

Tania & Rick Oshman

**RONALD BROCHSTEIN EARLY CHILDHOOD FUND**

*To enhance preschool education*

In Honor of

**The Anniversary of Sandy & Richard Brochstein**

Janet & Alan Weissman,  
Ryan & Natalie

In Memory of

**Mark Kalish**

Francine & Bradley  
Beckman

**SACHS-PESSES COMMUNITY OUTREACH FUND**

*To present programs on lesbian, gay, bisexual and transgender issues*

In Memory of

**Michelle Roth Glauben**

Kathy & Stephen Parven

**SISTERHOOD FLOWER FUND**

*To provide flowers in our worship spaces*

In Honor of

**Rabbis, Cantor, Teachers & Religious School Staff**

The Frank Family

**The B'nai Mitzvah of Lila Frank**

The Frank Family

**The B'nei Mitzvah of Jack Nodler**

Nancy & Ron Nodler

In Memory of

**Bettie Braunstein Farfel**

Goodfriend Family

**Dan Gerson**

Paula & Irving Pozmanti

**Murray Getz**

Philip Getz

**SISTERHOOD FUND**

*To enhance Sisterhood programming*

**A Donation**

Susie Askanase  
Susan Babendure  
Sue Baum  
Shelly Cyprus  
Lindy Dorn  
Laurie Gass  
Sandy Harris  
Mima Jackson  
Cathy Jankovic  
Arlene Karchmer  
Leda Karchmer  
Madeline Lowitz  
Barbara Mandelstein  
Myra Mayer  
Judy Myers  
Barbie Roth  
Rozanne Rubin  
Susan Septimus  
Anne Siegel  
Irene Weingarten  
Carol Sue Zions

In Honor of

**The Anniversary of Carol Sue & Michael Zions**

Susie & David Askanase

In Memory of

**Mary Nell Bleeker**

Dee Dee & Bob Halpin

**SUSMAN FUND FOR FAMILY PROGRAMMING**

*To support programs for families*

In Honor of

**The Birthday of Lila Rauch**

Diana Brackman

In Memory of

**Curtis Graves**

**Morris Rauch**

Lila Rauch

**Richard Susman**

Linda Susman

**Linda Cohn Walter**

Patricia & Mark Rauch

**TEMPLE FUND**

*To support the needs of the temple and to fulfill the mission of Congregation Emanu El*

In Appreciation of

**Zac Bodner**

Sarah, Adam, & Lois Williams

In Honor of

**High Holy Day Broadcasting**

Kally & Michael Sokolow

**Dr. Martin Grabois, Distinguished Emeritus Professor, Baylor College of Medicine**

Susan & Ed Septimus

**The Anniversary of Sheila & Jerry Kaplan**

Sandra & Sammy Chaskin  
Maralyn Cohen  
Terry Cweigenberg  
Cherill Dubinski  
Marlene Farbstein  
Bruce Fleishman  
Carol & Larry Fradkin  
Pat & Aaron Fradkin  
Bobby Frank  
Jennis Kauffman  
Diane Lapidus  
Maxine & Herman Lapin  
Jack Lapin Family  
Gary Margolis  
Marilyn & Donald Schaffer

**The Bat Mitzvah of Lois Williams**

Sarah & Adam Williams

**The Birthday of Paul Franks**

Susan & Syd Waldman

**Leah Rebecca Fulop**

Madgelyn & Richard Pesin

**Gerald Grogin**

Jay Marks

In Memory of

**Mary Nell Bleeker**

Susan Altschuler  
Donna & Philip  
Tenenbaum

**Bernice "Bernie" Feld**

Janis Goldstein  
Sally Hansel  
Micki & Steven Hirsch  
Blue Stockings

**Michelle Roth Glauben**

Susie & David Askanase  
Jeff & Karen Basen-Engquist  
Claire & Dick Brooks  
Pat & Aaron Fradkin  
Julie & Robert Goodfriend  
Barbara & Raymond  
Kalmans  
Elyse & Lewis Kalmans  
Sheila & Jerald Kaplan  
Judith Krull  
Jack Lee  
Cheryl & Michael Rubenstein  
Stephanie & Todd Slobin  
Donna & Philip Tenenbaum

**Mark Kalish**

Jeri Amundsen &  
Arthur Feldman  
Sue & Stu Baum  
Barbara & Raymond  
Kalmans

Elyse & Lewis Kalmans

**Rachelle "Shelly" Stalarow**

Irv & Barbara Black Levine  
Linda & Michael Shabot



# ADVERTISE WITH US

Increase your reach to nearly  
1700 families each month!

Contact David Lamden at  
DavidL@emanuelhouston.org.



CONGREGATION EMANU EL  
SISTERHOOD

# JUDAISM THROUGH THE ARTS

RSVP: [EMANUELHOUSTON.ORG/EVENT/JTTA2021](http://EMANUELHOUSTON.ORG/EVENT/JTTA2021)



WEDNESDAY  
**OCT 13**  
11:00 AM

MUSEUM OF THE  
**SOUTHERN  
JEWISH**  
EXPERIENCE

## grat·i·tude

/gradə,t(y)ōd/ noun

*Definition: the quality of being thankful; readiness to  
show appreciation for and to return kindness.*

I want to thank everyone for the honor and privilege  
of serving families within the community. It is most  
humbling to be given your trust and the great  
responsibility of taking care of your loved ones.

We serve our families from our hearts.



WALDMAN FUNERAL CARE

**Extraordinary Service. Compassionate Care.**

713-875-4811

[www.WaldmanFuneralCare.com](http://www.WaldmanFuneralCare.com)

Affiliated with Hardin Family Funeral Home



Congregation Emanu El

## PRE-PLANNING WITH PEACE OF MIND

EMANU EL MEMORIAL PARK  
8341 BISSONNET STREET

OFFERED BY EMANU EL MEMORIAL PARK:

- PEACEFUL & CALMING ATMOSPHERE
- WELL-MAINTAINED LANDSCAPE
- BEAUTIFUL OUTDOOR CHAPEL
- PARK OPEN DAILY 8 AM - 5 PM
- MEMBERS & NON-MEMBERS WELCOME
- INTEREST-FREE FINANCING

CALL TO SPEAK WITH OUR PLANNING COORDINATOR  
TODAY AT 713.529.5771 EXT. 213, OR VISIT US ONLINE  
AT [WWW.EMANUELHOUSTON.ORG](http://WWW.EMANUELHOUSTON.ORG).

AN ONLINE



**M**URDER MYSTERY

---


SUNDAY, OCTOBER 24 7:00 PM

---

FIND OUT MORE AND REGISTER  
BY VISITING OUR WEB CALENDAR  
AT [EMANUELHOUSTON.ORG](http://EMANUELHOUSTON.ORG)



Congregation Emanu El



Let me guide you **home.**

Terry Cominsky  
REALTOR-ASSOCIATE®  
713.558.3331  
[Terry.Cominsky@SIR.com](mailto:Terry.Cominsky@SIR.com)

Martha Turner  
**Sotheby's**  
INTERNATIONAL REALTY

**TOT SHABBAT**

FEATURING **ELLEN ALLARD**  
*The Queen of Jewish Early Childhood Music*

**NOVEMBER 5<sup>TH</sup>**  
DINNER 5:45 PM | SERVICE 6:30 PM



VISIT OUR WEB CALENDAR TO RSVP  
[EMANUELHOUSTON.ORG](http://EMANUELHOUSTON.ORG)

**BAGEL SHOP**  
**bakery**



5422 Bellaire Blvd

**Come see us at our  
2<sup>nd</sup> location!  
5422 Bellaire Blvd**

**Now serving New York  
Style bagels, breads,  
bagel sandwiches and  
more.**





This Bulletin is printed on recycled paper.



Congregation Emanu El

Oren J. Hayon, Senior Rabbi  
Pamela B. Silk, Associate Rabbi  
Joshua R.S. Fixler, Associate Rabbi  
Roy A. Walter, Rabbi Emeritus  
Rollin Simmons, Cantor  
David Lamden, Executive Director  
Jason Plotkin, Program Director  
Anna Shabtay, Director of  
Congregational Advancement  
Sarah Williams, Early Childhood Director  
Stefani Carlson, Director of  
Congregational Learning

Jeri Amundsen, President  
Stuart Gaylor, Senior Vice President  
Melissa Carson, Vice President  
Ronnie Kurtin, Vice President  
Matt Pasternak, Vice President  
Alana Pulaski, Vice President

fredi Bleeker Franks, Treasurer  
Dawn Blitz, Secretary  
Rodney Roth, Honorary President  
Andrew Gass, Brotherhood President  
Carol Sue Zions, Sisterhood President

EMANUELHOUSTON.ORG

SAVE THE DATE:

High Holy Day Videos,  
Experiences Available  
on YouTube and our  
website's "Watch" page

All services, worship  
experiences, sermons, and  
multiple musical clips are  
available from this past  
High Holy Days.

Want to watch something  
you enjoyed live or catch a  
moment you heard about  
from a family member or  
friend? Visit the Emanu  
El YouTube channel and  
search for the "High Holy  
Days 2021" playlist.



LIKE US ON FACEBOOK  
[www.facebook.com/emanuelhouston](http://www.facebook.com/emanuelhouston)