



Bulletin

February 6, 2018 | 22 Tevet 5778

VOLUME 72 NUMBER 5

FROM RABBI HAYON



I experienced India as a place of constant stimulus: sensory, spiritual, and intellectual. At every stop I was confronted by new ideas to consider and new memories that jostled for space in my mind.

I write this month's *Bulletin* article after having recently returned from a memorable and impactful trip to India.

I was selected to take part in the program as part of a group of eight Reform rabbis from North America who were invited to spend a week and a half exploring the history and culture of the Jewish community in India.

I must confess that, before embarking on this trip, I wasn't even aware that there was a Jewish community in India at all – but the things I experienced during my travels have opened my eyes to the richness and vibrancy of India's Jewish life, both yesterday and today. I learned a great deal, and have come home with a great deal to share with all of you.

The memories I returned with are now preserved in vivid mental snapshots that will remain with me for a very long

continued on page 2

FROM THE PRESIDENT



Jeff Basen-Engquist
Board President

Groundhog Day is not on our spiritual calendar; the 1993 movie of that title is not our text. Bill Murray's, Phil Connor, found himself stuck in a time loop on Groundhog Day until his character developed some,

well, character. In our worship calendar, we revisit our stories seeking lessons for today. That is the process Murray's Phil Connors eventually adopted to his benefit once he shifted from using his newfound awareness of his situation from manipulating others to improving himself.

continued on page 4

NOAH ARONSON TO SERVE AS ARTIST-IN-RESIDENCE

FEBRUARY 16 - 18

FRIDAY, FEBRUARY 16 | 6 PM

SOULFUL MUSICAL SHABBAT EXPERIENCE
featuring Cantor Simmons, the Shabbatoners & Youth Choir followed by special Oneg

SATURDAY, FEBRUARY 17 | 10:30 AM

INTIMATE SHABBAT EXPERIENCE
with Cantor Simmons & Rabbi Silk

SUNDAY, FEBRUARY 18 | 3:15 PM

FREE CONCERT
as part of Yom Limmud

more information inside this *Bulletin*



WORSHIP SERVICES

Daily

6:00 p.m., Monday through Thursday

Shabbat Mishpatim, Exodus 21:1 – 24:18

Friday, February 9th

6:00 p.m., Kabbalat Shabbat, Proler Chapel

Saturday, February 10th

10:30 a.m., Morning Service, Proler Chapel

Bar Mitzvah of **Noah Siegel**, son of Tess Siegel & Richard Tijerina

Shabbat T'ruman, Exodus 25:1 – 27:19

Friday, February 16th

6:00 p.m., Kabbalat Shabbat, Proler Chapel

Guest Artist-in-Residence Noah Aronson
Oneg Follow Services in Honor of National Jewish Disability & Awareness Month

Saturday, February 17th

10:30 a.m., Morning Service, Proler Chapel

Shabbat T'tzaveh, Exodus 27:20 – 30:10

Friday, February 23rd

6:00 p.m., Kabbalat Shabbat, Proler Chapel

Saturday, February 24th

10:30 a.m., Morning Service, Proler Chapel

10:30 a.m., Morning Service, Barish Sanctuary

Bar Mitzvah of **Kayleigh Horn**, daughter of Laura & Andrew Horn and **Amelia Nuzzo**, daughter of Nancy & Michael Nuzzo

Shabbat Ki Tisa, Exodus 30:11 – 34:35

Friday, March 2nd

5:45 p.m., Rodeo Tot Shabbat Dinner, Feld Hall

6:00 p.m., Kabbalat Shabbat, Proler Chapel

6:30 p.m., Rodeo Tot Shabbat, Oshman Multi-Purpose Room

Saturday, March 3rd

10:30 a.m., Morning Service, Proler Chapel

Shabbat Vayak'heil-P'kuedi; Exodus 35:1-40:38

Friday, March 9th

6:00 p.m., Kabbalat Shabbat, Proler Chapel

Saturday, March 10th

10:30 a.m., Morning Service, Proler Chapel

10:30 a.m., Morning Service, Barish Sanctuary

Bar Mitzvah of **Max Kalba**, son of Sarah Fischer & Gregg Kalba

Shabbat Vayikra, Leviticus 1:1 – 5:26

Friday, March 16th

6:00 p.m., Kabbalat Shabbat, Barish Sanctuary

Heritage Shabbat

Saturday, March 17th

10:30 a.m., Morning Service, Proler Chapel

REMINDER: All Friday night Shabbat services are video streamed on EmanuElHouston.org in addition to our Emanu El Facebook page and Roku channel. Saturday morning services featuring a B'nai Mitzvah are streamed on the Emanu El website and Roku channel.

Congregation Emanu El Bulletin (USPS 399-430) is published monthly by Congregation Emanu El, 1500 Sunset, Houston, Texas 77005. Periodical paid at Houston, Texas. POSTMASTER: send address changes to Congregation Emanu El Bulletin, 1500 Sunset, Houston, Texas 77005.

FROM RABBI HAYON *continued from page 1*

time to come, striking images like:

- A cluster of professional women on their way to work laughing in bright silk saris: saffron, lime and rose;
- A small girl in a glittering chartreuse shalwar kameez daydreaming as she walks alongside the family cow, who noses among heaps of trash, the breath from its nostrils steaming in the morning light;
- An unimaginably vast Mumbai slum, the buildings capped with sagging plastic blue tarps, slouches behind a crumbling stone wall – and suddenly, above the barbed wire, through air that smells like burning tires and wood smoke, floats a child's kite, lavender and bright as springtime.

I experienced India as a place of constant stimulus: sensory, spiritual, and intellectual. At every stop I was confronted by new ideas to consider and new memories that jostled for space in my mind. Of course, the most profound part of the trip for me personally was our introduction to the Jewish community, and those experiences will have a long-term impact on my rabbinic and on my leadership of our beloved community here at Emanu El.

Our tour led us through eight magnificent synagogues, six cities, and four states, concluding in Mumbai, where 90% of today's Indian Jewish population resides. There we visited with local staffers from the Joint Distribution Committee and Mumbai's JCC, and were greeted by members of Mumbai's Reform congregation, who inspired us with their deep commitment to the core principles of Jewish life.

This small community, perhaps one-tenth the size of Houston's Jewish population, is extraordinarily devoted to sustaining its values and its future. Mumbai's 4500 Jews support a synagogue, a Jewish home for the aged, a summer camp, a youth group, Hebrew classes, women's groups, and an innovative tikkun olam program that provides food and education for the impoverished children of Mumbai's slums. "Everyone gives, and everyone shows up," one member of the congregation told me, "because we know that we must."

Members of the Mumbai Jewish community know what is required to ensure its survival: participation, generosity and confident leadership. With few professional staff and the thinnest institutional infrastructure, strong involvement from laypeople is crucial for their community to thrive. I return from my visit in Mumbai inspired by the vision of what it might look like for every Jewish community to know that kind of commitment, in which every one of us feels called – and capable – to step forward into leadership because of the recognition that all of us are personally responsible for the welfare and sustenance of our spiritual homes. As the rabbinic sages of old reminded us: "You are not obligated to complete the work – but neither are you free to desist from it." [Pirke Avot 2:21]

I look forward to sharing more with you about my travels in India: the information I learned, more details about fascinating history of the Indian Jewish community, pictures and stories and recipes that open a remarkable window into the tremendous breadth and diversity of the Jewish people. Until then, shalom and namaste!

Noah Aronson to Serve as Artist-in-Residence at Emanu El during Yom Limmud Weekend



Congregation Emanu El will welcome the talented Noah Aronson as an 'Artist-in-Residence' the weekend of **February 16th-18th**.

Aronson will join Cantor Rollin Simmons, the Shabbatoners and youth choir for a musical Shabbat worship experience on **Friday, February 16th at 6:00 p.m.** The Shabbat service will be followed by an Oneg hosted by the Inclusion Committee to acknowledge National Jewish Disability & Awareness Month.

On **Saturday, February 17th at 10:30 a.m.**, join Aronson, along with Cantor Simmons and Rabbi Silk for an intimate and soulful Shabbat morning service

full of music. We will raise our voices and our spirits with melodies both familiar and new. We look forward to celebrating Shabbat with you!

The weekend will conclude on **Sunday, February 18th at 3:15 p.m.** as Aronson will perform a free concert as part of Yom Limmud at Emanu El. The concert and the Greater Houston Jewish Federation's Yom Limmud are generously endowed by the Barish family and The Chair King.

Aronson released his first solo Jewish album in May 2011, and the title song "Am I Awake" was a winner in the New Voices song competition at New CAJE in 2011. His album "Left Side of the Page," released in 2013, has received widespread acclaim for its musical settings of poetic selections from the *Mishkan Tefilah Prayer Book*.

Aronson is currently serving as the Creative Director of Sacred Music NY, a nonprofit organization he helped to create that organizes concerts around New York City, bringing together spiritual musicians from diverse backgrounds to inspire interfaith dialogue and social change.

Aronson's music is now sung in progressive communities and summer camps worldwide and has been included as part of the Cantorial curriculum at the Hebrew Union College's Debbie Friedman School of Sacred Music in New York City where he currently resides.

Emanu El to Host Yom Limmud

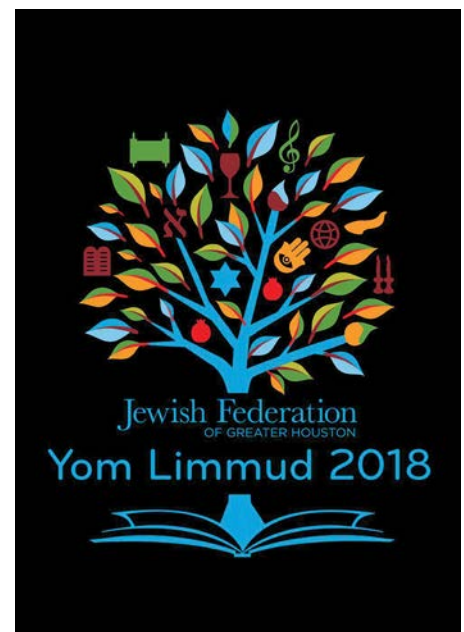
Due to Hurricane Harvey recovery at our neighboring synagogues, Congregation Emanu El has stepped up to host Yom Limmud 2018 on **Sunday, February 18th!** The Jewish Federation of Greater Houston's annual Yom Limmud – or Day of Jewish Learning – provides a unique opportunity for Jews from all denominations and walks of life to come together in one place at one time to learn, exchange ideas, and share experiences.

Scores of seminars featuring presentations by rabbis, cantors, Jewish educators, college professors, cultural arts specialists and other experts are facilitated throughout the day. The event also provides special programming for teachers. A full schedule will be made available on the Yom Limmud web site in mid-January.

Volunteers are sought to make Yom Limmud 2018 a success. If you would like to volunteer, visit <https://www.houstonjewish.org/yomlimmud>. Yom Limmud is generously underwritten by the Barish family and The Chair King.

Yom Limmud Class Offerings By Members of Emanu El Clergy

- **Rabbi Josh Fixler:** *The Torah of Transitions: Navigating Change in our Lives* – 9:30-10:20 a.m.
- **Cantor Rollin Simmons and artist-in-residence Noah Aronson:** *Let it Begin with Me: Songs of Peace and Freedom* – 10:30-11:40 a.m.
- **Rabbi Oren Hayon:** *The 'Hidden Light' of Justice* – 11:30 a.m.-12:20 p.m.
- **Rabbi Pam Silk:** *The Heart's Torah* – 1:30-2:20 p.m.



FROM THE PRESIDENT *continued from page 1*

In congregation life, doing things the same way year-after-year can be both comforting and ineffective. Healthy organizations constantly reassess themselves. One of the responsibilities of our Board of Trustees is to be alert to opportunities for improvement. Two significant such conditions led to projects now reaching their conclusion.

First, after five years of study and consideration, three task forces and numerous measured steps, the Board has approved a change in our approach to what we have always referred to as dues. Synonyms for dues tend to fall into two categories, fees and duties. The former implies support and the latter obligation. The change adopted recognizes both realities. As members of a community, we share responsibilities. And, as a part of a spiritual body, we value member equality as well as individual differences.

Congregation Emanu El will continue to respect the privacy and the financial situations of our members – what we refer to as the Emanu El way.

The new approach is intentionally straightforward. The math, slightly simplified: Those expenses shared by the community are divided by the number of member families, yielding the cost per family unit. That is the starting point. We still have attractive and practical membership levels for new and younger members and a rate for single members. Additionally, we have new ways to recognize those who generously provide support beyond the standard level. Our goals in adopting this Standard Commitment model are transparency for our membership as well as fiscal stability. Thank you to Mark Brookner and Stuart Gaylor and their earlier task forces, and to Rebecca Lunstroth and Rebecca Miller and

their task force for leading the current process.

The other large project is the revision of our 1998 bylaws. Once again, numerous task forces have worked on this. Four years ago, our Board worked with a task force and a consultant to develop and adopt a set of governing principles. We identified certain values (e.g., expanding membership participation by enlarging and diversifying committee membership, maintaining only necessary committees while encouraging a nimbler Task Force approach to short term or specialized projects, etc.) that we endorsed. The current bylaws, the Governance Plan, and the bylaws rewrite by the previous task force led by Elizabeth Krohn and Rick Oshman have been our reference documents. Based on those materials, the Bylaws Task Force Chaired by Richard Schecter has written a thoughtful revision of the bylaws. A vote on adoption of the proposed bylaws will be on the agenda at the April 17th Annual Meeting.

With transparency and communication in mind, both the Dues Task Force and the Bylaws Task Force will be providing *Bulletin* articles, informational meetings, and mailings. Please take advantage of these opportunities to learn about these matters.

One interpretation of Phil Connors' transition is that he performed numerous good deeds before being released from perpetual Groundhog Day to make his future with his sweetheart. While we are fortunately not mystically stuck in the past, the dedication of all those involved and the Board's due diligence enable us to complete these long-term projects, moving us forward to continued success.

Board Notes – January 2018

The first Board Meeting of 2018 took place on January 9th. The Board approved several new congregants for membership. . . . The formal budget process has begun. The Budget Committee is meeting with department heads to review funding requests. . . . The first introductory meeting for the Congregation's new social action partnership with the Community Family Centers was successful. Those in attendance were very enthusiastic. Rabbi Hayon hopes this partnership will be a very consequential and meaningful approach to social justice. . . . The Dues Task Force explained the vision and implementation of the contribution model, which is expected to have several giving levels and should allow Emanu El to maintain its current level of service. No one will be denied membership based on inability to pay the standard contribution. Congregants will receive a letter explaining the new model. . . . The Board discussed several questions presented by the Bylaws Task Force, which pertained to the senior rabbi, the size of the Board, and the Ritual and Music Committee. . . . The Ritual and Music Committee recommended that the "A Time to Pray" service, presently held at the Bayou Center, be moved to Emanu El on Rosh Hashanah afternoon, immediately before Tashlich. The change would allow the full clergy team to be a part of both services, notably Cantor Simmons would be involved in the musical component of each. The Board did not adopt the recommendation. As a decision was necessary regarding the contract with the off-site venue, the Board approved moving all Rosh Hashanah worship to Emanu El. The committee was tasked with coming back to the Board with a recommended plan for Rosh Hashanah services. . . . The Nominating Committee will be appointed soon. To apply, please contact Jeff Basen-Engquist. The Leadership Academy will be held in April as a single, day-long event. . . . David Lamden reported on the status and cost of Hurricane Harvey repairs. Emanu El's flood insurance paid part of the cost, but donations covered the majority of it. . . . The Roof Task Force reported that the roof consultant's initial assessment is that the entire roof of the building needs to be replaced, but that most of the decking can be saved. . . . The Board voted to hire an architectural or similar firm to produce renderings of proposed uses of the proceeds of the 75th Anniversary fundraising campaign. The board of the Endowment Funds of Congregation Emanu El will review the funding requests. . . . Rodney Roth reported that the board of the Endowment Funds just finished working with Robert Reichek to establish the Robert Reichek Youth and Education Fund (more information on page 14).

– submitted by Ben Miller, Board Secretary

Clergy Team, Brotherhood Series Concludes Adult Education Series in February

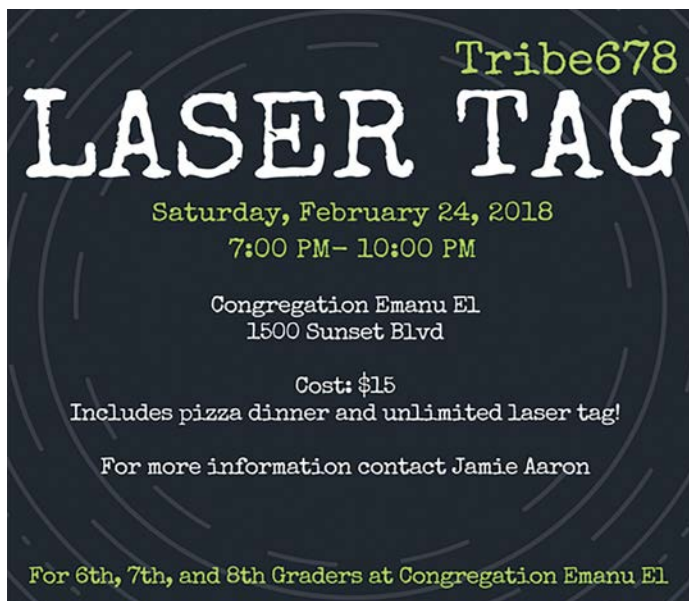
A series of adult education learning sessions open to the entire Congregation, which will focus on the Jewish perspective on current social issues and sponsored by our Emanu El Brotherhood will conclude on **Wednesday, February 7th at 12:00 p.m.** as Rabbi Josh Fixler presents Housing & Homelessness in the Stillman-Lack Library. The session will include lunch.

Brotherhood's Annual Real Men Make Chocolate Matzah

Thursday, March 29th at 6:30 p.m.

Come roll up your sleeves and gather with other men (as well as their kids and special friends) just before Passover to make yummy chocolate matzah treats! Your friends and family will thank you for bringing these awesome treats to your seder! Matzah and awesome toppings provided at no cost.

YOUTH CORNER



Annual Rodeo Tot Shabbat & Dinner Friday, March 2nd

One of the most talked about Shabbats of the year! Join us for a boot scootin' Rodeo Tot Shabbat filled with square dancing, Shabbat blessings and fun on **Friday, March 2nd**.

The evening will begin with a BBQ dinner at 5:45 p.m. in Feld Hall before we take the festivities into the Oshman Multi-Purpose Room at 6:30 p.m. where Rabbi Silk and Cathy Borden will lead our Shabbat service. All children

Calling Young Families! Emanu El Seeks Tot Shabbat Hosts

Are you looking for a way to get more involved? Do your kids want to lead blessings at Friday night services? Is your son or daughter having a birthday and you'd like to honor them in a unique way? The first Friday of each month we are pleased to have a special Tot Shabbat service, geared towards families with little ones ages 0-6.

Each Tot Shabbat presents a rare opportunity for families to interact with each other and get to know our clergy on a more personal level. Each month, Emanu El extends the privilege of hosting a Tot Shabbat to our Young Families who may be interested in becoming more involved. We also invite you to pair up with other families and host as a cohort if that's what you'd prefer.

For more information on hosting responsibilities and what this may entail, contact Jill Patir at (713) 529-5771, ext. 262.

with March birthdays will be invited for a birthday blessing.

The cost of dinner is \$6 for children and \$12 for adults. Vegetarian options will be available. To register, visit www.EmanuElHouston.org.

Young Families' Social Action Group to Host Kickoff Meeting Sunday, March 4th

Let's open up our children's eyes . . . and help make them into mensches!

Congregation Emanu El is launching a young families' social action group with a kickoff meeting for parents on **Sunday, March 4th at 11:00 a.m.** Our goal is to organize meaningful, recurring volunteer opportunities for families with children between the ages of four and eight.

Our goal at the initial meeting is to create a structure – timing of social action opportunities and lay leadership – that will enable parents to work side by side with their children and show them about caring and helping others in the greater Houston community and that they can make a difference. It is also a wonderful way to connect with other Emanu El families.

Get ready to roll up your sleeves! If interested in leading any programs or volunteering with your family, please attend the meeting. If you cannot make it and are interested in being included in future communications about this effort, contact Jason Plotkin at jasonp@emanuelhouston.org or (713) 535-6414.



Becker School

Becker School Parenting for Life Presents ... Parenting 101: Setting the Foundation

Presenters: Veronique Vaillancourt, LCSW, and Marcia Fiman, Family Therapist

Final session to be held on **February 12th at 9:15 a.m.**

Join with other parents to explore different philosophies to create your own approach for raising your children. There is so much information available today on the right way to discipline children that it can be confusing and overwhelming. Discuss and learn about many successful parenting techniques and to develop your system of guidance and discipline for your family. What you learn from others can help you enjoy your role as a parent, and help you gain confidence in your ability to teach your children self-discipline, responsibility, cooperation, and problem-solving skills. The concepts discussed will help you establish a base that will last throughout your years as a parent. You and your children will benefit from any continuing efforts to stay informed as your children journey through their ages and stages.

The Becker children were so thrilled to return to their happy place after winter break and a few extra "snow days." Check out just a few of the many beautiful smiles captured around the school.

Becker School Priority Registration Underway

Becker School Priority registration for the 2018-2019 school year is currently underway. If you are interested in having your child attend our fabulous school or need additional information, please contact Judy Lazor via email at judyl@emanuehouston.org or via phone at (713) 535-6400.



EMANU EL AT A GLANCE THROUGH MARCH 16th

The below information contains a listing of events at Emanu El exclusive of our Temple worship and Shabbat schedule, which can be found monthly on page 2.

As a Congregation, we communicate in many different ways: this calendar is supplemented by information that can be found throughout this edition of the Temple *Bulletin*, in the weekly Shabbat program, available in your weekly Wednesday eLetter, on the Emanu El website: www.emanuelhouston.org, and on our Facebook page.

CALENDAR OF EVENTS

(through March 16, 2018)

FEBRUARY

- 2/6 – Emanu Elders, 11:30 a.m.
- 2/7 – Brotherhood Adult Ed Series: *Housing & Homelessness*, 12:00 p.m.
- 2/8 – Work of Our Hands, 10:00 a.m.
- 2/8 – Judaism Through the Arts, 12:30 p.m.
(at Museum of Fine Arts Houston)
- 2/11 – Annual Commitment Process Informational Session, 10:30 a.m.
- 2/12 – Becker School Parenting for Life . . . Parenting 101: Setting the Foundation, 9:15 a.m.
- 2/12 – Gathering Place, 10:00 a.m.
- 2/16 – Shabbat Services with Artist-in-Residence Noah Aronson, 6:00 p.m.
- 2/18 – Yom Limmud, All Day
- 2/20 – Kids Meals, 9:30 a.m.
- 2/21 – Patricia Bernstein Presents *Ten Dollars to Hate: The Texas Man Who Fought the Klan*, 7:00 p.m.
- 2/22 – Annual Commitment Process Informational Session, 7:00 p.m.
- 2/25 – Helfman Purim Carnival, 11:00 a.m. – 1:00 p.m.
- 2/27 – Sack Lunches for SEARCH, 9:30 a.m.
- 2/28 – Signed, Sealed Megillah: An Emanu El Purim Celebration (6:00 p.m. dinner, 7:00 p.m. Megillah/Schpiel & 8:00 p.m. Adult Reception)

MARCH

- 3/2 – Rodeo Tot Shabbat
(dinner at 5:45 p.m., service at 6:30 p.m.)
- 3/4 – Young Families Social Action Kickoff, 11:00 a.m.
- 3/8 – Work Of Our Hands, 10:00 a.m.
- 3/8 – Book Review: *Small Great Things*
by Jodi Picoult, 7 p.m.
- 3/12 – Gathering Place, 10:00 a.m.
- 3/16 – Heritage Shabbat, 6:00 p.m.

NEXT BULLETIN TO BE ISSUED: TUESDAY, MARCH 6th

OUR TEMPLE FAMILY

IN THE COMMUNITY

Jewish Family Services held their Annual Meeting at Emanu El in late January. **Mark Brookner** ended his term as President of JFS while fellow congregant **Joy Kaplan** was installed as President. Additionally, **Philip Tenenbaum** was presented with the 2018 Shirley & Allen Becker Leadership Award. Philip is a Vice President on the board of JFS.

BIRTHS

Shayna Miriam Gilden, daughter of Alyssa & Craig Gilden; granddaughter of Jan & Jay Gilden, Judy & Donald Kaye; great granddaughter of Adele Leff

DEATHS

Selma Baskin, mother of David & Juli Baskin; grandmother of Danielle, Alexandra & Brianna Baskin.

Lenore Fenberg, mother of Steven Fenberg & Harry De Jonge, Carole & Jay Fenberg; sister-in-law of Marvin Barish

Harry Krull, brother of Marla Radoff

Stephen Zimmerman, son of Stanley Zimmerman

Our clergy want to know . . .

If you or a loved one is sick or hospitalized please let us know.

Contact the synagogue at (713) 529-5771, so that our rabbis can reach out and visit and be a source of strength and support.

Visiting the sick and praying for those who are ill are important and meaningful mitzvot.

Rabbi Hayon Visits India

Rabbi Oren Hayon of Congregation Emanu El joined colleagues from the Central Conference of American Rabbis (CCAR) in India for a Jewish heritage and history tour. The Rabbi is pictured at the memorial to Mahatma Gandhi during this tour.



Emanu El Hosts Renown Journalist Carl Bernstein as Endowment Fund Speaker

In late January, Congregation Emanu El hosted Carl Bernstein as its Endowment Fund Speaker. Bernstein presented, *An Evening with Carl Bernstein – Washington, the media, the Presidency, from the Age of Nixon to the Age of Trump.*

Special thanks to our Friends of the Endowment (as of press date) for enabling our Congregation to be enriched by such dynamic programming: Joel Abramowitz and Rita Bergers, Susie and David Askanase, Jacquelyn Barish, Marvin Barish, Karen and Jeff Basen-Engquist, Gloria and Larry Brenner, Barbara and Mark Brookner, Claire and Dick Brooks, Shelly Cyprus, Angie and Grant Dorfman, Barry Feig, Marcia and Keith Fiman, Carol and Larry Fradkin; fred and Paul Franks, Martha and Donald Freedman, Wendy Hawkins and Avrim Fishkind, Amy and David Kapiloff, Paul Kaplan and Margy Newman, Linda Kates, David Odle, Karen and Murry Penner, Robin and Rodney Roth, Linda and M. Michael Shabot, Helen and Andrew Spector, Linda Susman, Becky and Joe Williams, Carol and Michael Wilk, Dolores Wilkenfeld, Lorraine and Ed Wulfe, Linda and Richard Zoll.

My Generation Celebrates Shabbat at Emanu El

Fifty members of 'My Generation' came together for Shabbat dinner following services on Friday, January 19th. Emanu El's social group for those 65 and older were welcomed by Rabbi Josh Fixler before an evening of socializing and dining. A February event was set to include a day at the National Museum of Funeral History & Kim Son Restaurant. Check your Temple Bulletin and other communications for other upcoming happenings.



From Dues to Annual Commitment – A Nearly 75-Year Journey

Informational sessions: Sunday, February 11th at 10:30 a.m. and Thursday, February 22nd at 7:00 p.m.

Do you ever wonder how your annual dues are determined? For most of Congregation Emanu El's nearly 75-year history, we have used what is known as a "Fair Share" model. That meant that annually we asked each family to contribute 2% of their household income as "dues" to the congregation. This largely allowed us to care for our facility, hire amazing clergy and staff and offer outstanding programming.

While the "Fair Share" dues model worked for many years, we, like many other congregations around the country wanted a more transparent way of meeting our financial obligations. Also, we wanted to adopt an approach that recognizes congregants' contributions not as dues but rather as annual commitments to support our congregation.

This year we will implement what is commonly known as a "Standard Dues Model." This model sets a "standard" membership commitment at the actual cost to keep a congregation running, on a per family basis, based on its size and budget. In other words, total budgetary costs not otherwise supported through alternative sources of revenue are divided by the number of member families, establishing the cost per family of operating the congregation.

At the beginning of each fiscal year each family will complete and return a "Commitment Form" that will let our Accounting Office know both how much you are committing for the year, and how you would like to be billed. That will allow us to set up accounts appropriately for the year and will give us the ability to forecast annual income.

Emanu El's core values will not change. We remain committed to being accessible to every person seeking Jewish community, and it will remain our policy that financial capacity will never be a barrier to membership. Anyone who cannot afford the standard commitment will take the same steps they do now and reach out to have a brief confidential conversation with the Executive Director, Program Director or Membership Director, during which a comfortable and appropriate commitment amount can be set. Similarly, families who give in excess of this standard contribution will be encouraged to continue their generous support.

Finally, all members in good standing, no matter the commitment amount, will have the same full membership privileges and access as they do now.

We will be hosting two informational sessions at Emanu

El to explain the new system in more detail and to present drafts of the Commitment Forms you will be receiving in March. This will allow you to ask questions and understand the new system before it is fully implemented.

This change does not come lightly; Emanu El's leadership has been entertaining this for several years and has done significant research and due diligence. We want you to understand how your Temple is financially sustained, and we are committed to making this transition as transparent and comfortable as possible.

We hope you will join us for one of the informational sessions and we look forward to and appreciate your continued support.

Informational sessions to be held: **Sunday, February 11th at 10:30 a.m. and Thursday, February 22nd at 7:00 p.m.**

Welcome Our Newest Members

We are pleased to welcome the newest members to our congregational family. Please be sure to introduce yourself to our newcomers as they become a part of our community.

Steven & Ariel Becker, daughter Lily

Deneb Corkidi, daughter Azeret

Dmitry & Yulia Kiselenko, son Sebastian

Phillip Pyle II & Leah Binkovitz, daughter Sadie

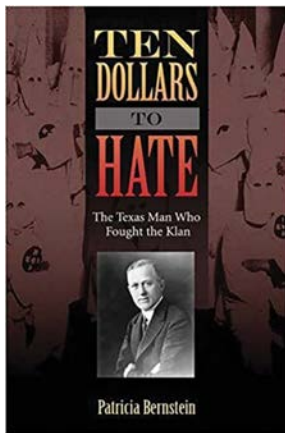
New members will be shared in the Temple *Bulletin* regularly. Know someone interested in becoming a part of our community? New to town? Or looking to find a way to connect with Emanu El? Contact Jill Patir at (713) 529-5771, ext. 262 or JillP@emanuelhouston.org.

Membership Portal Currently Unavailable

We apologize for the inconvenience, but our membership portal is currently unavailable as we transition to a new membership database software for the first time in over a decade. Our staff is currently in the process of familiarizing themselves with our new software so that they can better serve you upon launch.

Stay tuned for information on how you can access the member portal as part of a new website in the coming months.

Patricia Bernstein Presents *Ten Dollars to Hate: The Texas Man Who Fought the Klan* Wednesday, February 21st at 7:00 p.m.



The issues of organized hate that were so prevalent in the early 1920s are front and center in terms of what we are dealing with today. Congregant Patricia Bernstein shares from the book she wrote which tells the story of the massive Ku Klux Klan of the 1920s – by far the most “successful” incarnation since its inception in the ashes of the Civil War – and the first prosecutor in the nation to successfully convict and jail

Klan members. Dan Moody, a twenty-nine-year-old Texas district attorney demonstrated that Klansmen could face serious punishment for taking the law into their own hands – in this case, for the vicious flogging of a young World War I vet suspected of having illicit relations with a local widow.

Moody’s story is one of how the group was combatted and serves as an excellent segue into how to fight hate in today’s society.

Bernstein was born in El Paso and grew up in Dallas, a member of Dallas’ Temple Emanu-El congregation. She graduated from Smith College with a Degree of Distinction in American Studies. She founded her own public relations agency, Bernstein & Associates, in Houston in 1983, now in business for over 30 years. She has published numerous newspaper and magazine articles in such venues as *Texas Monthly*, *Cosmopolitan* and *The Smithsonian Magazine*, and three books. Her first book was *Having a Baby: Mothers Tell Their Stories* with Simon & Schuster, a collection of first-person accounts of childbirth from the 1890s to the 1990s. Her second book was *The First Waco Horror: The Lynching of Jesse Washington* and the *Rise of the NAACP* with Texas A&M University Press.

This event is free and open to the public.

Celebrate Purim with Emanu El

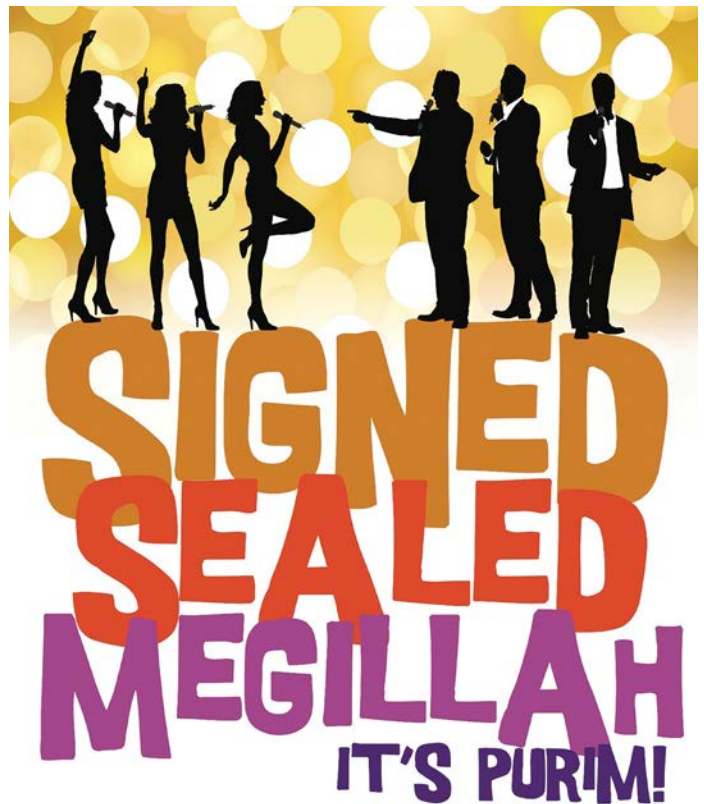
Two great events – Purim Carnival on February 25th & Purim Schpiel, Dinner on February 28th

Congregation Emanu El is celebrating Purim with two separate events!

Helfman Religious School will host a Purim Carnival on Sunday, February 25th from 11:00 a.m. to 1:00 p.m. The carnival will feature inflatables, games, prizes, a “jail”, music, face painting, Henna, pie toss, confetti eggs, a hot dog lunch, hamantashen and more.

For more information on sponsorship levels, ticket information and volunteer opportunities, please visit www.EmanuElHouston.org. Additional information is also available in the Helfman Herald or by contacting Marcia Fiman at marcia.nadel@sbcglobal.net.

All proceeds benefit the many school programs including teacher-in-service, Greene Family Camp scholarships, happenings and other activities.



Signed, Sealed, Megillah . . . It’s Purim!

Join us for an evening of silliness and song on **Wednesday, February 28th at 7:00 p.m.** as we hear a lively megillah reading, spin our groggers and sing our favorite Motown tunes together.

Our schpiel will be performed by clergy and staff, with special appearances by our volunteer and youth choirs. Motown-inspired costumes encouraged for all ages with a chance to show them off during a costume parade! The schpiel will be preceded by our annual “Purim & Pasta” dinner which is \$6 for children and \$12 for adults. Vegetarian options available and of course, there will be hamantashen! Students in the Helfman Religious School’s Upper School are complimentary. Online payments for the dinner are accepted by visiting www.EmanuElHouston.org.

The schpiel and megillah reading will be followed by an adults-only reception.

continued next page



Emanu El Youth Choir Participating in "Jewish Community Day" at Rice Baseball

7th Annual Kiddush Cup Classic Monday, March 5th

Congregation Emanu El is excited to announce that its annual Kiddush Cup Classic will be held on **MONDAY, MARCH 5TH** at Braeburn Country Club, 8101 Bissonnet St. The Kiddush Cup has been Congregation Emanu El's primary fundraiser and we are thankful to all individuals, agencies and corporations that have continued to support this great day of community. It is still not too late to enter as a team or player. Sponsorship opportunities begin at \$500 in addition to in-kind sponsors for auction items or other tournament player gifts/incentives. For more information, visit www.EmanuElHouston.org or call (713) 529-5771.

Current Sponsors (as of press date) listed below:

Silver Sponsor: Holmes Smokehouse
Bronze Sponsors: Absolute Marble & Granite, Butler-Cohen Design & Build, Origin Bank, UBS Financial Services
Closest-to-the-Pin Sponsor: Waldman Funeral Care
Hat Sponsor: Distinctive Life/Houston Jewish Funerals
Hole Sponsors: Mark Brookner, M. Penner
Hole-in-One Sponsor: Westside Lexus
Long Drive Sponsor: Judge Bob Schaffer
In-Kind Sponsors: 8th Wonder Brewery, Dolphin Graphics, Helfman River Oaks Chrysler Jeep Dodge, Kenny & Ziggy's, Michael Klein's Fine Jewelry

Heritage Shabbat Friday, March 16th at 6:00 p.m.

We are excited to announce that Congregation Emanu El will host a Classical Reform service on **Friday, March 16th at 6:00 p.m.** in the Barish Sanctuary.

The second 'Heritage Shabbat' of this series, this service's Shabbat worship will be inspired by musical selections from the Golden Age of Classical Reform music composed during the 19th and 20th centuries. Cantor Rollin Simmons will be joined by Emanu El's adult and youth choirs, in addition to our professional octet for the service, creating a beautiful and collaborative sound unique to this event. Attendees will have the opportunity to hear moving and awe-inspiring music in a style traditionally reserved for the High Holy Days.

An Oneg Shabbat follows this service.

Community Invited to Take Part in Game, Festivities
Rice University will be hosting a "Jewish Community Day" on **Sunday, March 25th at 1:00 p.m.** as the Owls' baseball team takes on Western Kentucky.

As part of the festivities, the Congregation Emanu El youth choir will be singing the national anthem under the direction of Cantor Rollin Simmons just prior to first pitch.

A special event ticket package for the game is available by visiting www.riceowls.com/JCD and utilizing "promo code" JCD. The package includes reserved seating in a designated section, an exclusive Jewish Community Day t-shirt and an opportunity for kids to run the bases post-game. The cost is \$15 for general admission and \$20 for chair backs per person.

5th Annual Second Night Seder Saturday, March 31st at 6:00 p.m.

The Congregation and community are invited to join us for our annual 5th Annual Second Night Seder on **Saturday, March 31st at 6:00 p.m.**

A Passover Seder led by our clergy, our seder features a catered meal with all the staples from matzoh ball soup to gefilte fish! Registration is currently open on the Emanu El website, www.EmanuElHouston.org, and a registration form also appears in this issue of the Temple Bulletin on page 12.

The cost is \$35 for member, \$40 for non-member. Children are \$18. **The deadline for Seder registration is Thursday, March 22nd.** A very limited number of seats at a cost of \$50 per person will be available for those who register after the deadline.

Those members of our Congregation seeking financial assistance or interested in making a donation to make seder accessible for members of our community are encouraged to reach out to program director Jason Plotkin at jasonp@emanuelhouston.org or (713) 535-6414.



Please join



Congregation
Emanu El

Rabbi Joshua Fixler, Rabbi Oren Hayon,
Rabbi Pamela Silk & Cantor Rollin Simmons

for Congregation Emanu El's

Second Night Seder

Saturday, March 31, 2018 | 6:00 pm

Kindly RSVP By Thursday, March 22, 2018

Reserve your spot online at emanuelhouston.org or by returning the form below to
Congregation Emanu El, 1500 Sunset Blvd, Houston, TX 77005



I (we) would like to reserve:

Individual Seating

Number of adult **members** (\$35 each) _____ Number of adult **non-members** (\$40 each) _____

Number of **children** 12 & under (\$18 each) _____

Beginning March 23, a limited amount of spaces will be available for \$50 per person.

Family Table of 10 \$360

Name on Table _____ Number of Tables _____

Dietary Information (please indicate the number in your party)

Vegetarian _____ Gluten-Free _____

In my absence or in addition to my reservation, I (we) would like to donate \$_____ to allow our Seder to be accessible to those in need of financial assistance or are new to our community.

Payment Information:

Name _____

Address _____ City/State/Zip _____

Enclosed is my check for \$_____, made payable to Congregation Emanu El.

Please charge my ticket(s) / table(s) to:

Visa MasterCard American Express Amount \$_____

Cardholder Name _____ Expiration _____

Card Number _____ Security Code _____

Phone _____ Email _____

Preferred Seating (optional):

If available, please seat me with one of the following Emanu El affinity groups:

Houston Area Jewish Singles (50's and 60's)

My Generation (65+)

Classic Connections (50's and 60's)

Emanu El Young Professionals

CELEBRATE PURIM WITH EMANU EL

HELFMAN RELIGIOUS SCHOOL CARNIVAL



SUNDAY, FEBRUARY 25

11 AM - 1 PM

GAMES • MUSIC • FACE PAINTING • PIE TOSS • PRIZES
HAMANTASHEN • CONFETTI EGGS • HOT DOGS & MORE!

For information on tickets, sponsorship levels and volunteer opportunities, please visit us online at emanuelhouston.org. Additional information is also available in the Helfman Herald or by contacting Marcia Fiman at marcia.nadel@sbcglobal.net.

All proceeds benefit the many school programs Helfman Religious School offers including teacher in-services, Greene Family Camp scholarships, happenings and other activities.

SIGNED
SEALED
MEGILLAH
IT'S PURIM!



WEDNESDAY, FEBRUARY 28

PURIM & PASTA DINNER 6 PM

SCHPIEL 7 PM

Join us for an evening of silliness and song as we hear a lively megillah reading, spin our groggers and sing our favorite Motown tunes together. Our schpiel will be performed by clergy and staff, with special appearances by our volunteer and youth choirs. Motown-inspired costumes encouraged for all ages with a chance to show them off during a costume parade!

The schpiel will be preceded at 6 pm by our annual "Purim & Pasta" dinner, which is \$6 for children and \$12 for adults. Vegetarian options will be available and, of course, there will be hamantashen! Students enrolled in the Helfman Religious School's Upper School are complimentary. Online payments for the dinner can be made by visiting emanuelhouston.org. The schpiel and megillah reading will be followed by an adults-only reception.

Congregation Emanu El Welcomes New Endowment Fund

The Endowment Fund Committee of Congregation Emanu El, under Endowment Foundation Chairman Rodney Roth, is pleased to announce the creation of The Robert Reichek Youth and Young Adult Endowment Fund.

Due to the generosity of Jennifer and Robert Reichek, this new fund will help underwrite programs for those who are 21 years old or younger, which build the Jewish community by supporting congregational initiatives that focus on youth and young adults at Congregation Emanu El. These initiatives will specifically be projects, which the congregation cannot undertake without this endowment support.

We thank the Reichek family as well as all of our families who have made endowment gifts that continue to allow us to provide scholarships and innovative programming for our congregation. If you would like to discuss a gift to the endowment or creating a named fund, please contact David Lamden, Executive Director, or Rodney Roth, Chairman of the Congregation Emanu El Endowment Foundation.

Emanu El Delivers Over 3,500 Pounds of Food to Second Servings in 2017



Volunteers from Second Servings pick-up food from Congregation Emanu El during 2017. Second Servings was the beneficiary of over 3,500 pounds food from Emanu El during the calendar year.

Congregation Emanu El's commitment to feeding the hungry in the Houston area took on new life in 2017 as the synagogue provided over 3,500 pounds of food to Second Servings over the course of the calendar year. Founded in 2014, Second Servings is Houston's only prepared food rescue organization.

During the last year, Second Servings has picked up food from countless events at the Reform synagogue ranging from Kiddush luncheons to the Hurricane Harvey Day Camp run at Emanu El in partnership with the Evelyn Rubenstein Jewish Community Center and the Union for Reform Judaism's Greene Family Camp.

Emanu El is one of countless partners in the community ranging from hotels and arenas to cafeterias and caterers.

With one of every five people in the greater Houston area facing food insecurity, Second Servings can redirect perfectly edible surplus food away from landfills to the people who really need it.

Groups and organizations on the receiving end of food donations from Emanu El in 2017 included the George R. Brown's Hurricane Shelter, Loaves & Fishes, Covenant House, Magnificat House, ReCENTER, The Beacon, The Center, U.S. Vets, the Emergency Aid Coalition and the Women's Home.

In addition, Emanu El's Brotherhood donated over 1,000 foil pans in honor of Myra Lipper – the 2017 Ernest Krautkopf Congregant of the Year at Emanu El – to Second Servings during the month of May. These tins and similar supplies donated at the time enable Second Servings to collect food from its many partner organizations.

In total, the donations from Emanu El served roughly a dozen of the organizations that Second Servings directs support to throughout the greater Houston area. This effort with Second Servings is one of several at Emanu El specifically geared towards fighting Houston's hunger. Monthly social action projects held at the synagogue include making over 1,000 sack lunches a month for Kids Meals and putting together sandwiches for SEARCH. For more information on Congregation Emanu El, contact program director Jason Plotkin at (713) 535-6414 or JasonP@emanuelhouston.org. Second Servings is under the direction of Executive Director Barbara Bronstein, who can be reached at (713) 824-6605 or Bbronstein@secondservingshouston.org.

Congregation Emanu El Opens Door for Rentals

Do you know a corporation or organization looking to rent space for an event or series of happenings? Or are you looking to host an event to celebrate a simcha? Congregation Emanu El has the space for you... and at a relatively affordable cost!

Available spaces include but are not limited to our outside classrooms, board room, Stillman-Lack Library, Oshman Multi-Purpose Room, Proler Chapel, Barish Sanctuary and Feld Hall.

Over the last few years, Emanu El has hosted an increasing amount of outside groups. Many of these rentals have been by "word of mouth" and have led to professional development seminars, guest lecturers, a pair of summer camps, storytelling and even a line dancing competition happening within the confines of the synagogue's campus.

The outside rentals have been of great benefit to not only the bottom line of the synagogue's budget, but to creating relationships within the greater Houston community that have helped expand Emanu El's reach in promoting events such as our Evening with Carl Bernstein, the Collectors' Car Show and the Holiday Shuk.

If you or someone you may know are interested in renting space at the synagogue, please contact Jason Plotkin at jasonp@emanuelhouston.org or (713) 535-6414.

Congregation Emanu El Expands Worship Accessibility with Addition of Roku Channels



Congregation Emanu El has taken another step in making its worship services and activities accessible around the world with the announcement of two Roku channels – one featuring the Barish Sanctuary and the other, the Proler Chapel.

The Roku channels will allow anyone around the world to have access to the Congregation's live and on-demand content including Shabbat services, High Holy Day services, special events, sermons and various musical selections.

“We are proud that Emanu El is one of just a handful of synagogues around the country to have Roku as part of the myriad of ways to tune into our worship and other activities,” said Jason Plotkin, program director at Congregation Emanu El. “Since the impact of Hurricane

Harvey, we have noticed significant increases in the amount of individuals who take advantage of watching our services remotely particularly those from outside the Houston area who became virtually connected with us during the storm.”

The channels are free for those who have Roku devices, which enable users to stream digital media content to their television using a broadband internet connection. Roku devices can be purchased from most local electronic retailers or various online distributors.

When logged into a Roku device, users can search for ‘Congregation Emanu El Houston’ to access content from the Barish Sanctuary and ‘Emanu El Houston Proler Chapel’ for similar content from the Proler Chapel. In addition to its new Roku channels, Emanu El currently broadcasts its Friday night worship and High Holy Day services on both its website (www.EmanuElHouston.org) and Facebook page (www.facebook.com/emanuelhouston).

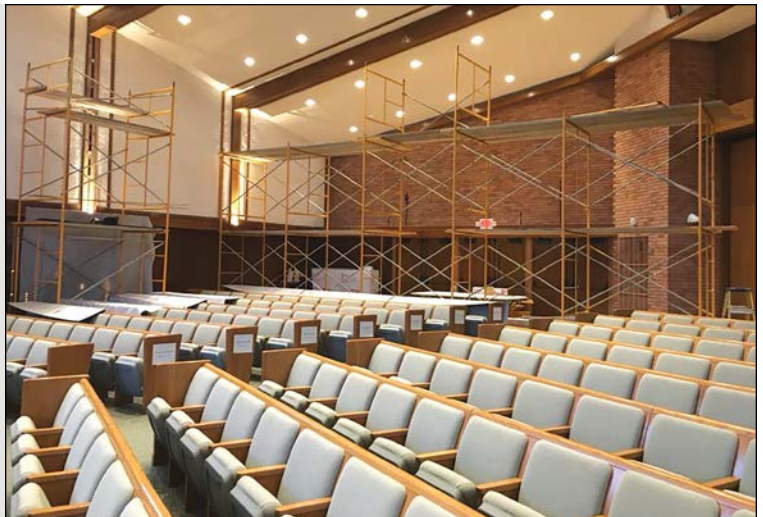
Saturday morning services held in the Sanctuary are broadcast on the web site and the primary Roku channel. Some special events are also broadcast on the varying platforms, pending contractual agreement(s) with guest speakers or performers.

Individuals seeking live content on Roku or the web site should check with the synagogue to verify which location(s) that services are being held in order to ensure that they are viewing the proper channel.

For more information on Emanu El's live and on-demand content available on Roku, Facebook, YouTube or the Emanu El website, please contact Plotkin at (713) 535-6414 or JasonP@emanuelhouston.org.

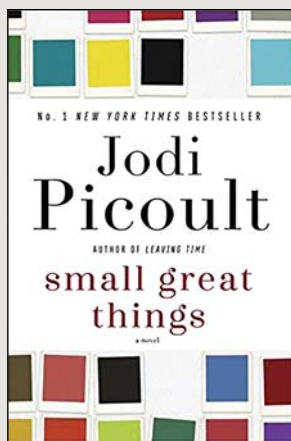
Barish Sanctuary Repairs Underway

Scaffolding in the Barish Sanctuary? In late January, renovations related to damages sustained during Hurricane Harvey began in the sanctuary. This project in the Sanctuary is one of the final tasks left to restore the building from the impact of the storm. By the time this edition of the *Bulletin* hits homes, the project in the Sanctuary should be completed.



Sisterhood News & Happenings

Spring 2018



BOOK REVIEW:
Small Great Things,
by Jodi Picoult
THURSDAY, MARCH 8TH
7:00 PM

*Reviewed by Lisa Stone, Goldensohn Fellow,
Anti-Defamation League*

Small Great Things is a 2016 fiction about Ruth Jefferson, an experienced labor and delivery nurse. Ruth begins a routine checkup on a newborn, only to be told by hospital administration that she's been removed from care of this baby. The parents are white supremacists and don't want Ruth, who is African-American, to touch their child. The next day, Ruth is the only nurse available when the baby goes into cardiac distress. Does Ruth obey orders not to touch the child or intervene? Following the consequences of her decision, Ruth leads the reader into the underworld of both blatant and covert racism.

A reception will follow this book review. Please RSVP to the Sisterhood office at sishood@emanuelhouston.org or (713) 529-5771, ext. 259 to help us properly plan for the evening.



Sisterhood to Hold Annual Judaism Through the Arts at MFAH Thursday, February 8th

Sisterhood is invited to attend Judaism Through The Arts Series¹¹ at the Museum of Fine Arts Houston, **Thursday, February 8th** at a time to be announced. Helga Aurisch, curator, will present *Passion for Perfection: The Straus Collection*. This wonderful program will be preceded by delicious desserts. Following the presentation we are invited to tour the exhibit. We will learn about the Straus family, founders of Macy's Department Store, and their fascinating family collection.

In its eleventh year, Congregation Emanu El Sisterhood and the Museum of Fine Arts Houston is presenting Judaism Through the Arts. Sisterhood and MFAH invite you to an illustrated lecture on "Passion for Perfection", featuring the Italian Renaissance art collection of the Straus family.

As part of the presentation we will learn about the Straus family that started Macy's in New York City and why this Jewish family collected Christian art. Helga Aurich, curator of European art, will present the program on Thursday, February 8th, from 12:30 to 3:00 p.m. in the Beck Building, mezzanine level in the American

General Conference Room, located at 1001 Bissonnet St. Refreshments will be served.

Parking for museum members is \$6 for 4 hours in the garage located on Montrose Blvd. Carpooling or taking the train are advised. Please RSVP by contacting the Sisterhood office at sishood@emanuelhouston.org or call (713) 529-5771, ext. 233. There is no charge for this event, but it is necessary to register.

Sisterhood Goes to The Theatre February 25th at 2:30 p.m.

Join Sisterhood for an enjoyable production of the hilarious play ANN at Stages Theatre, 3201 Allen Pkwy. This solo performance written by Emmy award winner Holland Taylor is a portrait of Ann Richards, the legendary late Governor of Texas, described as "tough as nails and funny as hell." After playing to sold-out audiences in Texas, ANN went on to win critical acclaim in New York, Chicago and at the Kennedy Center in Washington, DC.

Tickets may be purchased by calling the box office (713) 527-0123 from 12:00 to 6:00 p.m. The deadline for the special rate has passed.

Dinner arrangements are in progress following the show at an additional charge. We hope you will share this delightful event with us.

SAVE THE DATE:
Wednesday, March 21st

Emanu El's Sisterhood Annual Fundraiser:
Dancing with the Jewish Stars

So you think you can dance? Emanu El Sisterhood is hosting, *Dancing With The Jewish Stars*, **Wednesday, March 21st**, 1500 Sunset Boulevard. Four of our very own will team up with professional dancers for a judged dance competition. It's winner-take-all (trophy and bragging rights). You won't want to miss this afternoon of delicious food, fun, entertainment and an opportunity to support the Temple. The dance contestants will be announced in your formal invitation.

All patrons at the fundraiser are eligible for a Special Patron Drawing. The winner will receive a two-night stay at the luxurious 5 Star Windsor Court Hotel in New Orleans including dinner for two in the hotel's top-rated restaurant, The Grill Room.

For more information please contact the Sisterhood office at (713) 529 5771, ext.233 or sishood@emanuelhouston.org

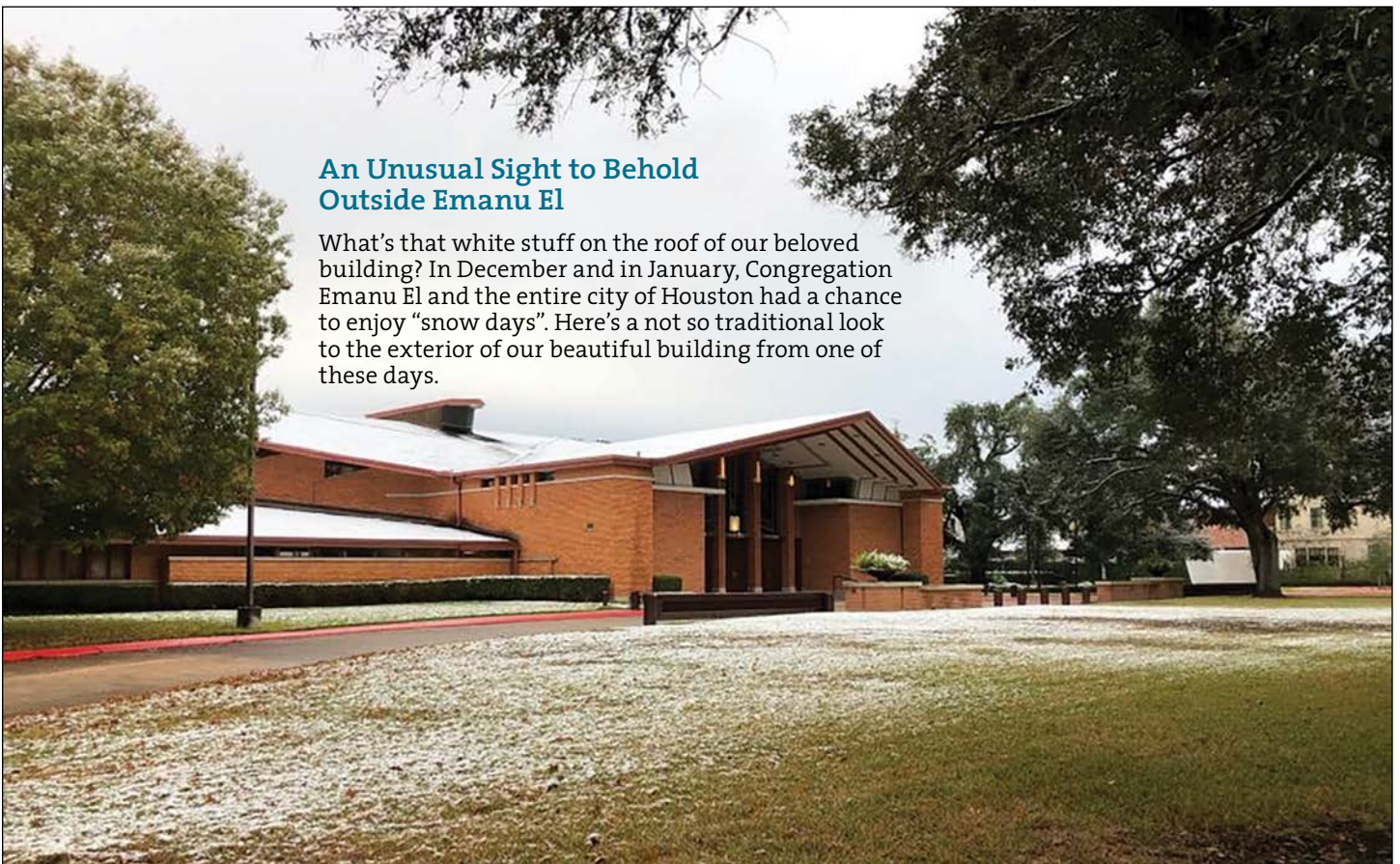
Emanu El Sisterhood
presents



Dancing
with the
Jewish Stars

**An Unusual Sight to Behold
Outside Emanu El**

What's that white stuff on the roof of our beloved building? In December and in January, Congregation Emanu El and the entire city of Houston had a chance to enjoy "snow days". Here's a not so traditional look to the exterior of our beautiful building from one of these days.





We appreciate the thoughtfulness of those who remember and honor their friends and loved ones through their generous contributions.

ACCESS FOR ALL

To make Emanu El accessible for physically challenged people

In Memory of

Harry Krull

Barbie & Lennie Roth

AUBREY & SYLVIA FARB COMMUNITY SERVICE FUND

To support small and emerging organizations that improve life for underserved Houstonians

A Donation

Susie & David Askanase
Ryan Berger
Sandy & Don Harris
Susan Morris
Carol Sue & Michael Zions
Linda & Richard Zoll

In Honor of

Aubrey Farb's Birthday

Steven Fenberg

Joy Hecht's Birthday

Emily W. Stein

Blake & Morgan Zeitman's Birthdays

Michael Zeitman

In Memory of

Toba Buxbaum

Steve Buxbaum

Lenore Fenberg

Susan & David Morris
Robert Schaffer

BECKER EARLY CHILDHOOD SCHOLARSHIP FUND

To provide Becker Early Childhood Center scholarships

A Donation

Melissa, Charles & Megan Carson

In Honor of

The Speedy Recovery of

Allen Becker

Lila Rauch

In Memory of

Lenore Fenberg

Judy & Allan Lazor

Amy Marks

Rae & Paul Engel & Family

Cecile Wexler Schuman

Joanie Murland

Stephen Zimmerman

Rochelle & Alan Jacobson

BECKER EARLY CHILDHOOD FUND

To provide & enhance Becker Early Childhood Center programs

In Memory of

Rozelle Schultz

Kathy & Garey Marks

CARY PASTERNAK CEMETERY FUND

To maintain & enhance Emanu El Memorial Park

In Honor of

Shel Vedlitz

Barbara & Raymond Kalmans

CERSONSKY CEMETERY BEAUTIFICATION FUND

To maintain and enhance Emanu El Memorial Park

In Memory of

Helga & Rolf Monroy

Ursula Corbett

Micky & Sidney Nagar

Joseph Nagar

Stuart Rawitscher

Kelly & James Cersonsky

Sophia Rodriguez

Sandra & M.H. "Butch" Cersonsky

CLERGY'S GOOD WORKS FUND

To provide Emanu El's clergy with funds to help individuals in need and support organizations that benefit the community

A Donation of Emanu El's commitment to providing services to refugees

Tracey Blumrosen

Marlene Finkelstein

Rabbi Josh Fixler

Donna Fraley

Rabbi Oren Hayon

Pam Jenkins

JoAnne Karnuth

Paula Katz

Cynthia & Ben Klein

David Lamden

Judy Lazor

Margy Newman

Elizabeth Townsend

Rabbi Roy Walter

Evon Zions

Donation of Gift Cards to Families Impacted by Hurricane Harvey

Temple Anshe Hased/Rabbi

Emily Losben-Ostrov

The Jewish Federation of

Greater Washington

Temple Beth Zion/Rabbi

Jonathan Freirich

In Appreciation of

Rabbi Oren Hayon

Natalie & Earl Littman

For Flood Relief

David Berkley

Rachael Tobor

In Honor of

Rabbi Oren Hayon

Amanda & Marc

Eichenbaum

Ted Roggen's Birthday

Carole & M. M. Feld, Jr.

Rabbi Pamela Silk

Amanda & Marc Eichenbaum

Shel Vedlitz

Marilyn Waldman

The Speedy Recovery of

Marianne Greenfield

Carol & Barry Goodfriend

Dorothy & Albert

Krafcheck

In Memory of

Herb Brochstein

Marie Brochstein

Rozelle Schultz

Marianne & Larry

Greenfield

Stephen Zimmerman

Carole & M.M. Feld, Jr.

Bitsy Proler

Miriam Selig & Adolph

Scheiman

DOLORES & BUDDY WILKENFELD COMMUNICATIONS FUND

To enhance Emanu El's communications with congregants

In Honor of

Harold Miller's Birthday

Barbara & Raymond

Kalmans

EDIS LEWIS PARKANS EMANU ELDERS FUND

To provide programs for Emanu Elders

In Honor of

Sylvia Brody's Birthday

Sara Astrich

In Memory of

Edis Lewis Parkans

Connie Russell

EDWARD WAYNE HUNGER FUND

To feed the hungry of Houston

In Memory of

Lloyd Parkans

Julie & Drew Alexander

FLORENCE & BEN BLUM LEADERSHIP FUND

To send Emanu El leadership to URJ Biennials and underwrite leadership programs and speakers

In Honor of

Joy Kaplan

Myra Lipper

In Memory of

Lenore Fenberg

Helaine Grogin

Jed Howard

Rozelle Schultz

Myra Lipper

FREDELL LACK EICHHORN CANTOR'S MUSIC FUND

To enhance musical programming

In Honor of

Rose Kamin's Birthday

Sheila & Jerry Kaplan

GENERAL ENDOWMENT FUND

To provide for the general needs of Emanu El and its facilities

In Honor of

Rabbi Silk

Sharon Wadler

In Memory of

Joan Rush Spitz

Jack J. Rush

William Spitz

HAROLD REINGOLD RELIGIOUS SCHOOL FUND

To enhance Helfman Religious School programs

In Honor of

The Speedy Recovery of

Marianne Greenfield

Sharon & Bradley Rauch

HELEN & HARRY REICHEK LECTURE FUND

To provide and enhance congregation programs

In Memory of

Lenore Fenberg

Jennifer & Robert Reichek

JASON & DAVID MARCUS PLAYSPACE FUND

To maintain and enhance the playground

In Honor of

The Bar Mitzvah of

Malcolm Mazow

Brittany & Matthew

Marcus & Todd Marcus

Sandy Marcus & Stan

Poladsky

JEAN & JULIAN GOLDBERG CHILDREN'S FUND

To provide arts programs for children

In Honor of

Dottie & Kurt Berk's Anniversary

Jean Goldberg
Arlene & Jack Rawitscher
Sydney & Ted Roggen

Ted Roggen's Birthday

Jean Goldberg

The Speedy Recovery of Jean Goldberg

Sondra Ross

In Memory of
**Jacob Eisenstein
Ron Suchart**

Jean Goldberg

PHILIP G. LUSKY RELIGIOUS SCHOOL SCHOLARSHIP FUND

To provide Helfman Religious School scholarships

In Memory of

Philip Lusky

Gary Goodfriend

PRAYER BOOK FUND

To provide prayer books for worship

In Memory of

Gloria Cohn

Sharon & Herb Cohn
Judy & Allan Lazor

Lenore Fenberg

Carol & Gary Brush

Arnold Sachs

Delwin Beene

RABBI ROY WALTER ENRICHMENT FUND

To support spiritual and cultural enrichment

In Honor of

Rabbi Roy Walter

Sheila & Jerry Kaplan

Rabbi Roy Walter & Douglas Mann

Julie Miller & Bruce Mann

The Birth of Benjamin Nathan Kessler

Madgelyn & Richard Pesin

The Speedy Recovery of Marianne Greenfield

Sheila & Jerry Kaplan

Linda & Marvin Stein

Janet Lipnick

Hilda & Bobby Frank

In Memory of

Jake Fradkin

Carol & Larry Fradkin

Beppino Giovannella

Heather & Daniel Pesikoff

Helaine Grogin

Sue Sue & Don Aron

Laurie & Milton Boniuk

Martin Keeler

Madgelyn & Richard Pesin

Barney Kogen

Sue Sue & Don Aron

Rozelle Schultz

Hilda & Bobby Frank

RICKY SCHNURR CAMPERSHIP FUND

To provide Greene Family Camp scholarships

In Honor of

Dottie & Kurt Berk's Anniversary

Gladys Schnurr

Natalie & Earl Littman's Anniversary

Ted Roggen's Birthday

Cindy & David Senior

The Speedy Recovery of Jean Goldberg

Marianne Greenfield

Gladys Schnurr

In Memory of
Barbara Cohen

Don & Larry Barr-Meyer

Rozelle Schultz

Gladys Schnurr

RIVA BURSTEN CARING CONGREGATION FUND

To support programs that assist people in the community

In Honor of

The Speedy Recovery of Shelly Cyprus

Sara Astrich

In Memory of
Leyla Kornhaber

Rosanne & Gary Van Gelder

Max Littwitz

Ruthe & Marty Berman

Rozelle Schultz

Sandy & Randy Herzstein

ROBERT I. KAHN SOCIAL JUSTICE FUND

To present annual lectures by Reform scholars

In Memory of

Jed Howard

Barbara & Raymond Kalmans

RONALD BROCHSTEIN EARLY CHILDHOOD FUND

To enhance preschool education

In Memory of

Harold Eisen

Sharon & Herb Cohn

ROSE GOODFRIEND ISRAEL PILGRIMAGE

To help send Confirmation students to Israel

In Memory of

Brent N. Goodfriend

Gary Goodfriend

SARAH & ADOLPH BLUMENFELD KLEI KODESH SACRED OBJECTS FUND

To purchase and maintain Emanu El's sacred objects

A Donation

Norman Blumenfeld

SHIRLEY & MARVIN BARISH TEACHER ENRICHMENT FUND

To provide training programs for Emanu El teachers

In Honor of

The Barish Family

Katherine Wildman

In Memory of
Lenore Fenberg

Susie & David Askanase

Sara Astrich

Jacquelyn Barish

Karen & Jeff Basen-

Engquist

Susan & Edward Kahn

Bonnie, Jacob, Jessica,

Hannah & Max Maurer

Joanie Feder Murland

Tania & Rick Oshman

Ruth G. Palmer

Kathy Parven

Sylvia Solomon

Dolores Wilkenfeld

Sharon & Mark Wise

SHIRLEY BARISH MEMORIAL ISRAEL EXPERIENCE FUND

To send Helfman Religious School high school students to Israel

A Donation

The Chair King, Inc.

In Memory of
Selma Baskin

Marlene Rubin

STILLMAN-LACK MEMORIAL LIBRARY FUND

To maintain and enhance the Stillman-Lack Library

In Memory of

Jed Howard

Caroline & Edward Kuntz

Martin Keeler

Genesis Class

SUSMAN FUND FOR FAMILY PROGRAMMING

To support programs for families

In Memory of

Richard Susman

Linda Rauch Susman

Susman Family

TEMPLE FUND

To support the needs of the temple and to fulfill the mission of Congregation Emanu El

A Donation

Anita & Robb Hodgkins

Help After Hurricane Harvey

Fran & Mark Berg

Michelle & Arthur Buring

Nancy Parkans

Ehrenkranz & Alan

Parkans

Lindsey & Drew Karklin

Cynthia & Ben Klein

Sharon Krueger

Linda Lesser

Joyce & Sanford Lobliner

Robert Mendelson

Lillian Putterman

Don Robins & Katharyn

Fox Slater

Carolyn & Harry Rosenthal

Victor Shainock

Congregation Emanu El

Sisterhood

Carol & Sanford Slobin

Sylvia Solomon

Leslie & Brett Tatar

Westchester Reform

Temple

In Honor of
Phyllis & Allen Applebaum's Anniversary

Sharon & Herb Cohn

The Bar Mitzvah of Max Ginsburg

Sandy & Andi Gaitz

The 2nd Bar Mitzvah of Barry Goodfriend

Vivian & Jerry Cyprus

In Memory of
Davna Brook

Vivian & Jerry Cyprus

Morris Edelson

Sue & Larry Frieden

Beppino Giovannella

Rozanne & Howard Rubin

Harry Mellon

The Boenig Family

Ruth Schnitzer

Vivian & Jerry Cyprus

Mary Schultz

Herman Schultz

Rozelle Schultz

Sara Astrich

Melanie Lewis

Linda & Marvin Stein

Cecile Wexler Schuman

Gerry Karkowsky & Family

Fannie & Carl Weil

Judy Weil

Stephen Weil

Rusty Zainfeld

Joy & Harris Jacobs

Rozanne & Howard Rubin

Stephen Zimmerman

Joan Green Jeffrey

John M. Thomas



This Bulletin is printed on recycled paper.



Congregation Emanu El

Oren J. Hayon, Senior Rabbi
Pamela B. Silk, Associate Rabbi
Joshua R.S. Fixler, Assistant Rabbi
Roy A. Walter, Rabbi Emeritus
Rollin Simmons, Cantor
David Lamden, Executive Director
Jason Plotkin, Program Director
Paula Katz, Early Childhood Director
Stefani Carlson, Director of
Congregational Learning

Jeff Basen-Engquist, President
Rodney Roth, Senior Vice President
Stuart Gaylor, Vice President
Bruce Lessey, Vice President
Greta Pliskin, Vice President
Laurie Lee, Vice President
Nicole Longnecker, Treasurer
Ben Miller, Secretary
Rebecca Lunstroth, Honorary President
Lewis Kalmans, Brotherhood President
Marc Weinstein, Sisterhood President

EMANUELHOUSTON.ORG



Chicken Soup
Cookoff
Sunday, April 8th

More than 40 of Houston's Top Restaurants of all Cuisines including American, Italian, Japanese, Thai and Jewish Deli will compete at Emanu El on **Sunday, April 8th from 11:00 a.m. – 2:00 p.m.** in our bi-annual Chicken Soup Cookoff!

Tickets are now on sale at www.ChickenSoupCookoff.com. All of the income from this event goes to charities, including the Houston Food Bank and Emergency Aid Coalition.

The event is organized by the Brotherhood of Congregation Emanu El and a team of volunteers from across the Congregation.



LIKE US ON FACEBOOK

www.facebook.com/emanuelhouston