



# Bulletin

January 7, 2020 | 10 Tevet 5780

VOLUME 74 NUMBER 4

## FROM RABBI HAYON



*2020 promises to be an enriching and exciting year for the sacred community we share at Emanu El.*

At the beginning of January in each, people all around the world set aside time to formulate their resolutions for the New Year. We might resolve to take better care of our health, to read more books, or to spend more time with friends and family.

One of the most familiar and universal new year's resolutions, though, is the commitment to lose weight in the New Year. And so, inspired by that well-known tradition, I want to use this month's *Bulletin* to suggest three ways for you to consider losing weight (figuratively, not literally!) in 2020:

Lose the weight of your possessions. Many of us have closets full of clothing we rarely wear, shelves holding books we will not read, and garages containing unused sports or hobby equipment. Many of these belongings do not contribute any sense of joy or fulfillment to our lives, regardless of how much we may once have loved them. This month, consider cleaning out some of your unused possessions. Many social-service agencies would love to receive the gift of your donated goods – or, if you're

*continued on page 2*

## Marlee Matlin to serve as 2019-20 Endowment Speaker



Congregation Emanu El, in partnership with the 2020 ReelAbilities Houston Film & Arts Festival, is excited to announce that Academy Award-

winning actress, author and activist Marlee Matlin will present *Nobody's Perfect: Achieving Inclusion, Diversity and Access* on **Thursday, January 30 at 7:30 p.m.**

The event, taking place at Emanu El, is part of the congregation's 2019-20 Endowment Series and kicks off the eighth annual, ten-plus-days ReelAbilities Houston Film & Arts Festival, which is produced by the JFS Alexander Institute for Inclusion.

*continued on page 8*

## Cantor Rollin Simmons Featured In *Longing And Belonging: Songs Of Home*

Community invited to free **January 26** concert at Congregation Emanu El



Cantor Rollin Simmons

Through a dynamic presentation of song, Cantor Rollin Simmons will take audiences through a musical exploration of the meanings, feelings and concepts of home in a free concert at the synagogue on **Sunday, January 26, from 4:00 – 5:30 p.m.**

The concert's theme, *Longing and Belonging: Songs of Home*, inspired a repertoire which features Cantor Simmons performing the music of Leonard Bernstein, Kurt Weill, Simon and Garfunkel and more.

"Is home a place you dream about, an unattainable idyllic scene that you can never quite reach? Is home the feeling when you know you are with people you love and

*continued on page 2*

## WORSHIP SERVICES

---

### Shabbat Va-y'chi, Genesis 47:28 – 50:26

Friday, January 10

6:00 p.m., Kabbalat Shabbat, Proler Chapel

Saturday, January 11

10:30 a.m., Morning Service, Proler Chapel

### Shabbat Sh'mot, Exodus 1:1 – 6:1

Friday, January 17

6:00 p.m., Kabbalat Shabbat, Proler Chapel

Saturday, January 18

10:30 a.m., Morning Service, Proler Chapel

10:30 a.m., Morning Service, Barish Sanctuary

B'not Mitzvah of **Caroline Elizabeth Byrnes**, daughter of Courtney & Jeremy Byrnes and **Ashley Tyler Ringold**, daughter of Melanie & Daniel Ringold

### Shabbat Va-eira, Exodus 6:2 – 9:35

Friday, January 24

6:00 p.m., Kabbalat Shabbat, Proler Chapel

Saturday, January 25

10:30 a.m., Morning Service, Proler Chapel

10:30 a.m., Morning Service, Barish Sanctuary

B'not Mitzvah of **Leah Hoffmann**, daughter of Karin & Lorin Hoffmann and **Carly Peleg**, daughter of Lori & Leeor Peleg

### Shabbat Bo, Exodus 10:1 – 13:16

Friday, January 31

6:00 p.m., Kabbalat Shabbat, Proler Chapel

Saturday, February 1

10:30 a.m., Morning Service, Proler Chapel

10:30 a.m., Morning Service, Barish Sanctuary

B'not Mitzvah of **Addison Paige Berger**, daughter of Rachel & Michael Berger and **Caroline Remy De Leef**, daughter of Dawn & Peter De Leef

### Shabbat B'shalach, Exodus 13:17 – 17:16

Friday, February 7

6:00 p.m., Kabbalat Shabbat, Barish Sanctuary

6:30 p.m., Tot Shabbat, Proler Chapel

Saturday, February 8

10:30 a.m., Morning Service, Proler Chapel

10:30 a.m., Morning Service, Barish Sanctuary

B'nei Mitzvah of **Samuel Robert Rudin**, son of Allison & Steven Rudin and **Gavin Sherman**, son of Riana & Greg Sherman

**REMINDER:** All Friday night Shabbat services are video streamed on our website as well as our Emanu El Facebook page and Roku channel. Saturday morning services featuring a B'nai Mitzvah are streamed on our website and Roku channel.

---

Congregation Emanu El Bulletin (USPS 399-430) is published monthly by Congregation Emanu El, 1500 Sunset, Houston, Texas 77005. Periodical paid at Houston, Texas. POSTMASTER: send address changes to Congregation Emanu El Bulletin, 1500 Sunset, Houston, Texas 77005.

## FROM RABBI HAYON *continued from page 1*

feeling enterprising, you can sell or trade them online. (And if you haven't set seen one, the episodes of Marie Kondo's "Tidying Up" series can be a great inspiration. Catch them on YouTube or Netflix.)

Lose the weight of an overprogrammed calendar. All of us feel overwhelmingly busy these days, whether our days are taken up with care of children, parents, social obligations or our own personal needs. Our brains and souls need plenty of quiet time so that we can be more reflective, grateful, and creative, but many of us are attached to the constant insistence of obligations and social media. Take a bit of time to look through your monthly calendar and identify one or two things that can be removed, then use those newfound hours to do something healthy for yourself or something kind for the world, and recapture the lost art of quiet tranquility in 2020.

Lose the weight of guilt and shame. The pressures of our modern world seem to be particularly effective at making us feel guilty or ashamed about our abilities, our appearances, and our accomplishments. This year, commit some time and energy to take care of yourself and remember that you are lovable and valuable just the way you are. Cultivating a practice of prayer, meditation, or exercise can help with your self-affirmation, as can the development of a fulfilling relationship with a therapist or supportive friend. All of us need periodic reminders about our own innate worth and beauty.

2020 promises to be an enriching and exciting year for the sacred community we share at Emanu El. I hope that all of us – individually and collectively – will be successful in casting off the burden of some extra weight, in order to liberate our minds and hearts to more eagerly share in the principled work of this holy place.

---

## CANTOR ROLLIN SIMMONS FEATURED IN *LONGING AND BELONGING: SONGS OF HOME*

*continued from page 1*

support you? We call a home a mikdash m'at - a little sanctuary: a place of safety, a place of shelter, a place of quiet, and a place to welcome guests," says Cantor Simmons. "Throughout our lives, we all struggle to find a sense of connectedness, of belonging, of home. This genre-defying concert will explore how the concept of home fits into our lives."

Performing with Cantor Simmons are vocalists Emily Moses and Alexandra Venzke along with Phillip Hall on piano, David Goldstein on bass and Starlic Williams on percussion. A reception will follow the concert.

Free and open to the public, tickets to the, *Longing and Belonging: Songs of Home*, concert and reception are required by visiting [www.emmanuelhouston.org](http://www.emmanuelhouston.org) or calling 713.529.5771.

For more information, visit the Emanu El website or contact Jason Plotkin at 713.535.6414 or [jasonp@emmanuelhouston.org](mailto:jasonp@emmanuelhouston.org).

### IN THE COMMUNITY

**Dee Dee Dochen** has been named chair of Houston's eighth annual, citywide ReelAbilities Houston Film and Arts Festival, set for February 11-20. The festival uses the arts as a vehicle to educate, celebrate and change perceptions about individuals with disabilities.

### WEDDINGS

**Kristy Gomez & Jared Novy**

### BIRTHS

**Lyla Louise Dodd**, daughter of Amy & Andrew Dodd; granddaughter of Ellen Berkson Ecker, Bill Ecker, and Maureen & Michael Dodd

**Madeline Mae "Maddie" Eber**, daughter of Michelle & Michael Eber; granddaughter of Annette & Scott Ernstein, Debbie & Jon Eber

**Irving Charles Pasternak**, son of Willa & Joshua Pasternak; grandson of Vicki & Herb Pasternak, Chris Strickling and David Kramer

**Morris Isai Santos Penner**, son of Elizabeth Santos & Ryan Penner; grandson of Karen & Murry Penner, Clementina & Santiago Santos; great-grandson of Barbara & Harris Hauser, Judy Penner

**Tanner Ellis Pickei**, son of Laurie & Ross Pickei; grandson of Patti & Dan Steiner, Heide & Don Pickei; great-grandson of Shirley & Sonny Landsberg, Charles Steiner, Selma Glaser, Seymour Kirschner, Pat Meinzer

**Hyatt Lev Rubenstein**, son of Jodi & Michael Rubenstein; grandson of Mark Rubenstein, Betsy Rubenstein, Janine & Charles Pulman

### DEATHS

**Leonid Buryakovsky**, husband of Rena Buryakovsky; father of Vadim Buryakovsky & Marina Kagan, Inna Buryakovsky; grandfather of Maya Buryakovsky Pomroy & Matt Pomroy, Veronica & Sergey Bukhman, Xinyi & Michael Bukhman, Tracy & Larry Buryakovsky, Eva Buryakovsky; great-grandfather of Madelyn Pomroy, Emma Pomroy, Lily Bukhman, Sophie Bukhman, Samuel Bukhman, Moses Buryakovsky; brother of Ludmila Buryakovsky

**Harold Caplan**, father of Leslie Cohan & Richard Caplan, Hildy & Mike Caplan, Isolda Celeghin & Jim Caplan, Carolyn & Bill Caplan; grandfather of Koby, Kailey & Henry, Danny, Leah & Elon, Lindsey & Jared, Jennifer & Justen, Tina & Henry, Sara, Joseph; great-grandfather of Jackson, Preston, Roland

**Morrie Glesby**, father of Susan Gale Glesby, Nancy Sorenson Glesby & Gary Steven Glesby; grandfather of Lauren Glesby Mahan, Tracy Sarah Glesby & William Worthington; brother-in-law of Lila Rauch

**Norman Kleiman**, father-in-law of Amelia Ribnick Kleiman; father of daughters Pamela and Carolyn Kleiman and Stephanie Robinson; grandfather of Brett Kleiman and Jacklyn Kleiman

**Robyn Saghian**, wife of Sion Saghian; mother of Rachel & Michael Saghian, Lindsay & Elan Tavor, Kimberly Saghian; daughter of Loretta Roman, sister of David Roman

**Emily Weingarten Stein**, mother of Shelley & Vic Wisner, Sharon & Mike Segal, Irene Weingarten; grandmother of Adam Weingarten, Whitney & Daniel Weingarten, Elaine & Mark Weingarten, Lauren & Oren Marouni, Eedan & Shawn Ishak, David Wisner, Jonathan Wisner; step-mother of Marsha & Lonnie Schooler, Paula & Rick Stein, Ronnie Stein, Julie Stein, Joanne & John Litlow; great-grandmother of Sloane

**Odessa Davis Wexler**, mother of Sue & Dan Wexler, Penni Nachman Wexler; grandmother of Marcy & Jason Laviage, Stuart Wexler, Courtney Wexler, Angie & Corbett Nachman, Nicholas Nachman; great-grandmother of Morgan, Zac, Kaden, Alex and Evan; sister-in-law of Seymour Wexler

#### A Notice About Bereavement Communications

Bereavement notices for Our Temple Family are distributed with the permission of the deceased's family, and the timing of these notices is dictated by the family's request. Of course, each family grieves in its own way, and we are grateful for our congregation's patience and understanding with different families' preferences about how their loss is publicized.



## Police Chief Art Acevedo Visits Emanu El for Power Breakfast

Our Power Breakfast series continued in November with Houston Police Chief Art Acevedo. Acevedo discussed community policing, hate crimes and protecting our places of worship during a conversation with Rabbi Hayon. The police chief also shared how Houstonians can get involved by learning more about judges and bail reform. Acevedo was our second Power Breakfast guest, following Houston Astros beat writer Chandler Rome this past summer. The next guest in our Power Breakfast series will be announced in the coming weeks.



## Past Presidents Gather for Annual Lunch

In December, our past presidents and founding families were celebrated during a Heritage Shabbat service. A month prior, the past presidents along with current President Rodney Roth and Senior Vice President Jeri Amundsen gathered at the synagogue for lunch and catching up on the current goings on at Congregation Emanu El. This gathering of past presidents has been an annual event each fall.



## Emanu El Youth Choir Performs at Brookdale

The Congregation Emanu El Youth Choir, under the direction of Cantor Simmons, visited the Brookdale Galleria in early December to perform Chanukah songs with the residents. Mazel Tov to this group of exceptionally talented young singers!



## EE75 Ever Forward: A Celebration

The selection of photos below is just a sampling of pictures from our EE75 Ever Forward: A Celebration, which took place on Saturday, November 16. The event was chaired by Elyse Kalmans and Cheryl Levy, with over 300 guests in attendance.

Ever Open, a film celebrating 75 years of Emanu El made its premiere during the evening. The piece, directed by Steven Fenberg and produced by Carrithers Studio, will be made available to the congregation in January.



### A Stylish, Red Carpet Welcome to Emanu El

Guests arriving at the synagogue for the 75th celebration entered through Feld Hall by way of a red carpet. A stylish car from the 1940's also greeted guests.

### Emanu El's Clergy In A Reimagined Feld Hall

Various spaces around the Emanu El campus were transformed for the celebration. Most notably were Feld Hall, which serves as a backdrop for this photo of our clergy, and the Proler Chapel which, for the first time in recent memory, had its chairs removed to allow room for a sushi bar and assorted food stations. The sushi came by way of Uptown Sushi, with the cuisine provided by Houston Catering Concepts and desserts by Dessert Gallery.



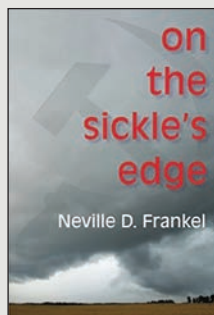
### David Caceres Band on Stage at EE75 Ever Forward

The David Caceres Band led off the evening in Feld Hall providing a "big band" feel for the guests. Other musical performances included the Divisi Strings in the Proler Chapel and a late-night musical display by DJ Senega in Feld Hall.



# Sisterhood News & Happenings

January – February  
2020



## BOOK REVIEW:

*On the Sickle's Edge*,  
by Neville D. Frankel  
THURSDAY, JANUARY 9  
12:30 PM

Reviewed by Ellen Grabois. Spanning three continents and four generations of a family, this historical drama, political thriller, and poignant love story is told through the voices of three characters: South-African born Lena, transported to Latvia and, later, trapped in the U.S.S.R.; her granddaughter, Darya, a Communist whose disillusionment with Soviet ideology places her family at mortal risk; and Steven, a painter from Boston who stumbles into the tangled web of his family's past.

Against the roiling backdrop of twentieth-century Russia and Eastern Europe, the novel delivers a sweeping tale of love and loss, secrets and survival.

Book reviews are open to the public; however, reservations are requested so we can plan accordingly. Make a reservation online by visiting our web calendar or by calling the Sisterhood office at 713.529.5771, ext. 233.

## Sisterhood Visits Maryam Islamic Center Thursday, January 23, 9:00 a.m.

Sisterhood invites you to enjoy a day of learning and sharing at the Maryam Islamic Center, located at 504 Sartartia Rd., in Sugar Land. We will tour the mosque as guests of their interfaith department and speak with women of the Islamic faith, who will share with us a better understanding of the diverse community in which we live.

After our visit, we will have lunch at Kim Son Restaurant, 12850 Southwest Fwy., in Stafford. A bus will pick up participants from Congregation Emanu El at **9:00 a.m.** and return to the synagogue at approximately **3:00 p.m.** This event is limited to 39 guests and is free, except for lunch on your own.

Please **RSVP by Friday, January 17** by contacting the Sis-terhood office at 713.529.5771, ext. 233 or [sishood@emanuelhouston.org](mailto:sishood@emanuelhouston.org) or registering online at [www.emanuelhouston.org](http://www.emanuelhouston.org).

## Judaism Through the Arts Thursday, February 6, 1:00 – 3:00 p.m.

Join Sisterhood at the Museum of Fine Arts Houston (MFAH) for a fascinating program of Judaism Through the Arts. This unusual program will focus on Norman Rockwell's painting, *Freedom of Worship*, part of the internationally touring exhibition of Norman Rockwell: American Freedom at the MFAH.

In addition to a discussion of this iconic painting, Helga Aurisch, curator of European art, will coordinate a multi-media presentation of significant objects from



**Norman Rockwell's *Freedom of Worship* will be the focus of this year's Judaism Through the Arts program hosted at the Museum of Fine Arts Houston.**

the Jewish, Christian, Islamic, Hindu and Buddhist collections by the curatorial staff of each department.

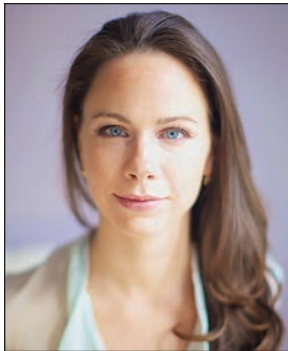
*continued next page*

---

One highlight will be the recently acquired Montefiore Machzor, a beautifully illuminated High Holy Days manuscript created in 1310. This presentation will be followed by a tour of the Rockwell exhibit and a viewing each of the exceptional religious objects that were discussed.

Space is limited, so please **RSVP by Monday, February 3**, either online by visiting our web calendar or by contacting the Sisterhood office at [sishood@emanuelhouston.org](mailto:sishood@emanuelhouston.org) or at 713.529.5771, ext. 233.

## Sisterhood Announces Barbara Pierce Bush as 2020 Fundraiser Speaker



Congregation Emanu El Sisterhood, in partnership with the Barbara Bush Literacy Foundation and Houston Public Library, will hold its annual fundraising event, *Words Change the World* on **Thursday, March 26, 2020, at 11:00 a.m.** This year's guest speaker will be Barbara Pierce Bush, humanitarian and co-founder and Board Chair of

Global Health Corps.

A Yale University graduate with a degree in Humanities, Ms. Bush co-founded Global Health Corps, which mobilizes a global community of young leaders to build the movement for health equity. She has worked with the Red Cross Children's Hospital in South Africa and UNICEF in Botswana, is a member of UNICEF's Next Generation Steering Committee and the UN Global Entrepreneurs Council.

Named one of *Newsweek's* Women of Impact in 2013, she released *Sisters First*, a *New York Times* best seller written with her twin sister and co-author Jenna Bush Hager.

Barbara Pierce Bush is also a supporter of her family's foundation, the Barbara Bush Literacy Foundation, created to improve the quality of lives through the power of literacy. The Foundation, established by Neil and Maria Bush, is dedicated to helping eradicate the literacy crisis in Houston. The Sisterhood's partnership with the Foundation will donate part of the proceeds raised by Words Change the World to make an impact on the local community by donating children's books to the Harris County Public Library's Curiosity Cruiser.

A moderated conversation with Barbara Pierce Bush will **begin at 11:30 a.m.**, followed by a Texas-style lunch. Congregation Emanu El's Sisterhood has a strong dedication to community service and social action as well as progressive Jewish values. Co-chairs for this year's event are Kathy Parven and Shelley Wisner.

Invitations for the event will be sent out in mid-January and registration will subsequently open up online at [emanuelhouston.org/sisterhood](http://emanuelhouston.org/sisterhood) or by calling the Sisterhood office at 713.529.5771.

For additional information, contact the Sisterhood office at 713.529.5771 or email [sishood@emanuelhouston.org](mailto:sishood@emanuelhouston.org).

## Mahj Cards for 2020 on Sale Now

The Congregation Emanu El Sisterhood has 2020 cards currently. A regular card is just \$8, and a large print card is \$9. To secure your card today, please mail your check to Sylvia Brody at 2004 Vermont, Houston, TX 77019, or bring your check to the Sisterhood office. The deadline to secure your card is **Wednesday, January 15**.

---

## UPCOMING PROGRAMS AT EMANU EL

### Taste of Talmud: Lunch Time Text Study Class Continues on Thursday, January 16, 12:30 p.m.

Bring your lunch and join Director of Congregational Learning Stefani Carlson for an introduction to rabbinic text study. No previous experience necessary: we will study with translation side-by-side the original text. This class is scheduled for the third Thursday of the month.

### Immigration: Current Crisis, Future Hope

Thursday, February 13, 7:00 p.m.

Immigration is constantly in the news.

During this program, experts will share with the congregation about the current immigration situation,

both legal and illegal, and how it affects each of us.

This event is sponsored by the Sisterhood and Brotherhood.

#### SPEAKERS INCLUDE:

**Brett Perlman, JD**, President and CEO of the Center for Houston's Future

**Tatiana Obando**, Refugee and Immigration Center for Education and Legal Services

**Gordon J. Quan**, Attorney, Board Certified in Immigration and Nationality Law.

This event is open to the public, though registration is requested online at [www.emanuelhouston.org](http://www.emanuelhouston.org) or calling 713.529.5771. A dessert reception follows.

## MARLEE MATLIN TO SERVE AS 2019-20 ENDOWMENT SPEAKER *continued from page 1*

Tickets are \$10 and can be purchased through Emanu El's website or by calling 713.529.5771. A private reception with Marlee Matlin will be held before the event for Emanu El Endowment underwriters and sponsors of ReelAbilities Houston.

Matlin's appearance coincides with a significant milestone, the 30th anniversary of the signing of the Americans with Disabilities Act (ADA), which was signed into law by President George H.W. Bush in 1990. The ADA prohibits discrimination based on disability while also requiring employers to provide reasonable accommodations to employees with disabilities. The law also established accessibility requirements for public spaces.

### ABOUT MARLEE MATLIN:

Matlin, who lost her hearing when she was only 18 months old, has never let her challenges dictate her future or deter her dreams. Matlin achieved worldwide critical acclaim for her film debut in Paramount Pictures' *Children of a Lesser God*, for which she received the Academy Award for Best Actress. At 21, she became the youngest recipient of the Best Actress Oscar and only one of four actresses to receive the honor for her film debut. In addition to the Oscar, Matlin received the Golden Globe Award for Best Actress in a Drama in 1986.

Along with a successful Hollywood career, Matlin has dedicated herself to raising awareness for many humanitarian causes, including diversity and LGBT rights. She is a staunch advocate for children and a champion for those struggling against domestic abuse and addiction, battles she knows well.

In 2015, Matlin developed "Marlee Signs," the first celebrity-driven app that teaches the basics of American Sign Language (ASL) on mobile devices. In 2016, Matlin returned for her third appearance at the Super Bowl, signing the *National Anthem* alongside Grammy-winning and Platinum-selling artist Lady Gaga. In support of the Starkey Hearing Foundation, Matlin has also helped raise awareness for better hearing health for millions of deaf and hard of hearing children and adults in developing countries.

Since winning the Oscar and Golden Globe for *Children of a Lesser God*, Matlin has starred in numerous features including *Walker*, *The Player*, *Hear No Evil*, *It's My Party*, and *What the Bleep Do We Know*. She has also starred in TV films *Bridge to Silence*, *Against Her Will: The Carrie Buck Story*, *Dead Silence*, *Freak City*, *Where the Truth Lies*, and Hallmark Hall of Fame's *Sweet Nothing in my Ear*.

Matlin also starred in her own NBC series *Reasonable Doubts* opposite Mark Harmon and the Emmy Award-winning *Picket Fences*. Matlin was twice nominated for a Golden Globe Award for Best Actress in a Television Drama as well as the People's Choice Award. She has been nominated for four Emmy awards for her appearances on *Seinfeld*, *Picket Fences*, *The Practice* and *Law and Order: SVU*.

Matlin starred for seven years on the award-winning drama *The West Wing*, and has made numerous guest appearances including *ER*, *Desperate Housewives*, *CSI: New York*, *Extreme Makeover: Home Edition*, *Desperate Housewives*, *Nip/Tuck*, *CSI*, *Glee* and *Family Guy*. In 2007 Matlin joined *The L Word* for three seasons. From 2011 to 2017, Matlin starred in the Peabody Award-winning series, *Switched at Birth*. Matlin was a series regular on the third season of the ABC drama *Quantico*.

Matlin broke barriers once again when she starred on ABC's *Dancing with the Stars*, and in 2015 returned to the stage after a 30-year hiatus by making her Broadway debut in the revival of the Tony Award-winning musical *Spring Awakening*.

In 2009, Matlin published her New York Times best-selling autobiography *I'll Scream Later* and has authored three novels for children: *Deaf Child Crossing*, *Nobody's Perfect* and *Leading Ladies*.

Matlin makes her home in the Los Angeles area with her husband, a law enforcement officer and their four children.

Matlin's appearance at Emanu El is generously underwritten by the endowment funds of the synagogue including the Nathan Berg Lectureship Fund, the Caplovitz Lectureship Fund, the Eleanor & Frank Freed Lectureship Fund, the Helen & Harry Reichel Lectureship Fund, the Shirley & Bernard Weingarten Fund and the Julius Zinn Fund.

Previous Endowment Fund speakers at Emanu El have included the late Governor Mario Cuomo, actor Joshua Malina, Reverend William Barber and journalist Carl Bernstein.

### ABOUT REELABILITIES HOUSTON FILM & ARTS FESTIVAL:

ReelAbilities Houston Film & Arts Festival is annually produced by the JFS Alexander Institute for Inclusion in collaboration with the Mayor's Office for People with Disabilities and supported by lead sponsors TIRR Memorial Hermann, founding partner, and Cornerstone Home Lending. The Festival showcases and leverages the unique contributions of people with disabilities, with the mission to foster inclusion, erase stigmas, change perceptions and create pathways to employment in the nation's most diverse city.

The event will include ASL interpretation, real-time captioning and accessible seating. Additional accommodation requests should be made 72 hours in advance by contacting Andie Palagi, Festival Coordinator, at 713.986.7808 or [ReelAbilities@jfshouston.org](mailto:ReelAbilities@jfshouston.org).

For more information on Matlin's appearance at Emanu El, contact Jason Plotkin at 713.535.6414 or [jasonp@emanuelhouston.org](mailto:jasonp@emanuelhouston.org).

For information on ReelAbilities Houston, contact Andie Palagi, Festival Coordinator, at 713.986.7808 or [ReelAbilities@jfshouston.org](mailto:ReelAbilities@jfshouston.org).





# Helfman Religious School



## Greene Family Camp (GFC) Camperships

Are you planning to send your child to Greene Family Camp this summer? Campership awards are worth half of tuition for Helfman Religious School students. Encourage your child(ren) to apply. **Please write names on the back of the projects.** Grade-level projects are based on current grade enrollment.

Campership applications are due to the religious school office by **Friday, January 31, 2020.**

### 3rd & 4th Grade Drawing Contest: “My Own Personal Enthusiasm for Judaism”

This topic can mean many different things to people; therefore, the completed drawing must be accompanied with a short paragraph describing the drawing and its meaning.

### 5th Grade Essay Writing: “My Very Own Program for Greene Family Camp”

Imagine developing a unique program of your very own for camp. What kind of program would it be? What would it involve and how would you involve others? (1-2 pages, double spaced)

### 6th & 7th Grade Essay: “Why I wish to spend my summer at GFC”

A summer spent at GFC can be one full of excitement, friendship, and Judaism all rolled into one. What draws you to the camp atmosphere? One essay will be chosen from each grade. (2 pages, double-spaced)

### 8th Grade Drawing Contest: “My Own Personal Enthusiasm for Judaism”

This topic can mean different things to different people; therefore, the completed drawing must be accompanied by a short paragraph describing the drawing and its meaning.

### 9th Grade Poetry Contest: “Being Jewish”

Express your thoughts and feelings creatively by writing a poem. In verse or rhyme, enlighten us with what “being Jewish” means to you.

Camperships include: Brotherhood Camperships, Sisterhood Camperships, Chester Marcus Religious School Community Committee Campership, Connie Reischer Campership, Ricky Schnurr Campership.

Children who have previously won a campership are not eligible to win again.

## Helfman Religious School Celebrates Chanukah with Happening

The Helfman Religious School headed to the fourth floor of the Gaylor Parking Facility on a recent Saturday. A relay race with kids running with pool noodle “candles” to be “lit” with tissue paper flames by a teacher assistant; art featuring scratch-off dreidels and snack featuring apple slices and dough nuts.



## Helfman Religious School Engagement Series: Yoga

The Helfman Religious School Committee is excited to present the second in our Parent Engagement series.

Bring your mat (or borrow one of ours) and join us for Coffee and Yoga on **Sunday, February 2.** Coffee and healthy snacks will be available starting at **9:30 a.m.**, with yoga class beginning at **11:00 a.m.**

We are grateful to Eden Perry, Emanu El congregant and certified yoga teacher, for providing this class for our Helfman Religious School parents.

To help us plan accordingly, please register at [www.emanuelhouston.org](http://www.emanuelhouston.org) or by calling 713.529.5771.



## Becker School

### 2020-2021 Registration for Becker School

Becker School Priority Registration for the 2020-2021 School Year begins **Monday, January 27**. Families who are members of Emanu El receive priority for enrollment.

If you are interested in your child attending Becker, please be sure to submit an online application at [emanuelhouston.org/form/beckeradmissions.html](http://emanuelhouston.org/form/beckeradmissions.html).

If you would like to schedule a tour of Becker School or have any questions about the admissions process, please contact Judy Lazor at 713.535.6400 or [judy1@emanuelhouston.org](mailto:judy1@emanuelhouston.org).

### Tot Shabbat in February Friday, February 7, 6:30 p.m.

Families with young children are invited to join Congregation Emanu El for our monthly Tot Shabbat! Due to building considerations, this month's Tot Shabbat will include a service without dinner. To accommodate our families who need to feed their children or make a pit stop at home, our service will begin at 6:30 p.m.

A short and sweet Oneg will follow the Tot Shabbat. Our popular Rodeo Tot Shabbat will take place on **Friday, March 6**, with **dinner at 5:45 p.m.** and the **service to follow at 6:30 p.m.**

For more information, contact Jason Plotkin at [jasonp@emanuelhouston.org](mailto:jasonp@emanuelhouston.org) or 713.535.6414.

### Becker School Presents Parenting Workshop

Sessions begin **Tuesday, February 4** with offerings at **9:15 a.m. or 7:00 p.m.**

Join us for this four-part parenting workshop that will teach you the most powerful parenting tips we know! Get strategies to use now.

This unique parenting workshop will offer you research-backed parenting tips and techniques that can enhance your relationship with your child, return control to you as a parent, help you avoid the number one mistake we make as parents, and give you skills you can use right away to make things better.

Even if things are going well at your house, this information helps you set the foundation you want for your family. We will meet **four Tuesdays**, with class times at **9:15 – 10:15 a.m.** or **from 7:00 – 8:00 p.m.** beginning **Tuesday, February 4**, with our last class meeting **Tuesday, February 25**. Cost for the class are \$200 for one parent or \$300 for two people from the same family.

Becker School is offering this workshop in conjunction with Houston Family Therapy Associates. Lynn McLean, LCSW-S, Registered Play Therapist-Supervisor teaches parent classes and offers individual parent coaching at the museum district child and family therapy practice she founded in 2004. Her staff includes therapists dedicated to the use of play therapy to support children.

For more information, contact Houston Family Therapy Associates at 713.936.0633 or Leslie Strug at [leslies@emanuelhouston.org](mailto:leslies@emanuelhouston.org) or call 713 535-6400. To register, visit [www.emanuelhouston.org](http://www.emanuelhouston.org) or call Strug at the aforementioned number.

## MEMBERSHIP NEWS

### Welcome Our Newest Members

We are pleased to welcome the newest members to our congregational family. Please be sure to introduce yourself to our newcomers as they become a part of our community.

**Abigail & Howard Reiner**

**Heather Williamson, children Aria and Oliver**

**Boris & Galina Yoffe**

New members will be shared in the Bulletin regularly. Know someone interested in becoming a part of our community? New to town? Or looking to find a way to connect with Emanu El? Contact Elizabeth Townsend at [elizabetht@emanuelhouston.org](mailto:elizabetht@emanuelhouston.org) or 713.529.5771, ext. 222.

## UPCOMING PROGRAMMING OFFERINGS FOR AFFINITY GROUPS & SPECIAL INTERESTS AT EMANU EL

Congregation Emanu El is actively seeking to create groups within our community to serve various ages, stages and interests. Are you interested in forming a group like the offerings listed below?

Contact Elizabeth Townsend at 713.529.5771, ext. 222 or [elizabethht@emanuelhouston.org](mailto:elizabethht@emanuelhouston.org), or Jason Plotkin at 713.535.6414 or [jasonp@emanuelhouston.org](mailto:jasonp@emanuelhouston.org).

### Monthly Mahj at Emanu El – Two Opportunities to Play First Thursdays, 5:30 p.m. & Third Mondays, 1:00 p.m.

Our next first-Thursday evening group of Mahj players in the Stillman-Lack Library takes place on **Thursday, February 6**.

A nominal \$5 fee covers drinks and dinner. Novice and advanced players welcome! The next edition in the series will be **Thursday, March 5**.

For more information and to RSVP, please contact Elizabeth Townsend at [elizabethht@emanuelhouston.org](mailto:elizabethht@emanuelhouston.org) or 713.529.5771, ext. 222. You may also RSVP online by visiting our website calendar.

The third-Monday afternoon group continues on **Monday, February 20**, following a break in January due to MLK day. Please RSVP to the Sisterhood at [sishood@emanuelhouston.org](mailto:sishood@emanuelhouston.org) or 713.529.5771, ext. 233.

### My Generation's Bingo Blastoff Sunday, January 12, 5:00 p.m.

Start 2020 off right by joining My Generation – Emanu El's social group for those 65 and older – for an evening of Bingo and schmoozing.

The evening will include light supper, wine, good company and Bingo! Prizes will be awarded to the winners, and a good time will be had by all. The cost for the evening is \$15 per person, and advance registration is required so we can plan accordingly.

Reservations can be made online or by calling the synagogue at 713.529.5771. For more information, contact Jason Plotkin at 713.535.6414 or [jasonp@emanuelhouston.org](mailto:jasonp@emanuelhouston.org).

### The Classics: Post-Shabbat Dinner Friday, January 17, following 6:00 p.m. Shabbat services

Cheers to 2020! Save the Date as the Classics – Emanu El's social group for members in their 50s and 60s – hosts a dinner to kick off the new year and give farewell to the last!

We will enjoy services together with the Shabbatones,

then share a delicious Shabbat dinner at the synagogue featuring Mediterranean cuisine as well as gluten-free and vegetarian options.

The cost for dinner is \$12, and reservations can be made online or by calling the synagogue at 713.529.5771. For more information, contact Jason Plotkin at 713.535.6414 or [jasonp@emanuelhouston.org](mailto:jasonp@emanuelhouston.org).

### My Generation: Experience the Epic Story of Texas & American West at the Bryan Museum Wednesday, February 12, 8:45 a.m.

Join My Generation – Emanu El's group for 65 & older – for a docent-led tour of the Bryan Museum in Galveston, located inside an orphanage that survived the storm of 1900. During the two-hour tour, the group will experience the epic story of Texas and the American West through art, artifacts and touch screen displays that make history come alive.

The group will **meet at Emanu El at 8:45 a.m.** before heading to Galveston on an air-conditioned bus. The cost of tour is \$12 per person. The museum is maintained at 65 degrees, and comfortable attire is recommended.

Following the tour, the bus will head to the Gypsy Joynt, a lively burger spot located in a historical building formerly owned by Jewish residents of Galveston. There are plenty of options for this pay-your-way lunch.

The group is expected to return to the synagogue by 4:00 p.m. Space is limited to the first 39 registrants, and the registration deadline is **Tuesday, February 4**.

To register, visit us online or call 713.529.5771. For more information, contact Jason Plotkin at [jasonp@emanuelhouston.org](mailto:jasonp@emanuelhouston.org) or 713.535.6414.

### The Classics: For the Love of Chocolate ... and Wine! Saturday, February 15 at 4:00 p.m.

Like wine? Love chocolate?? Join the Classics – the congregation's social group for members in their 50's and 60's – for an afternoon of chocolate and wine tasting.

You'll be surprised at the different wine and chocolate pairings that we will share! Our scrumptious tasting will take place at Nos Caves Vin, located at 2501 Wroxtton. We are required to limit participation to 25, so RSVP online at our website or by calling the synagogue at 713.529.5771. The cost to participate is \$18 per person.

Questions? Contact fred Bleeker Franks at [fredi.bleeker@gmail.com](mailto:fredi.bleeker@gmail.com)

*continued next page*



---

## Saturday Bereavement Group to Begin in January

First session to be held on January 25

Emanu El will host a bereavement group on **Saturday mornings at 9:15 a.m.** The group will meet for 12 sessions between, **concluding on April 11**. Participants are not required to attend all sessions but are strongly encouraged to attend as many as possible.

The group will be facilitated by Mallory Minberg, M.Ed., LPC, who currently works as a staff psychotherapist at the Menninger Clinic, Bellaire Outpatient Office.

Advance Registration is required. Contact Donna Fraley at [donnaf@emanuelhouston.org](mailto:donnaf@emanuelhouston.org) or 713.529.5771, ext. 212.

### Our clergy want to know . . .

If you or a loved one is sick or hospitalized please let us know.

Contact the synagogue at 713.529.5771, so that our rabbis can reach out and visit and be a source of strength and support.

Visiting the sick and praying for those who are ill are important and meaningful mitzvot.

---

### Donations to the Sisterhood Flower Fund

For donations to the Sisterhood Flower Fund (for the Shabbat handout) please make checks payable to "Congregation Emanu El Sisterhood" and mail or drop off to Donna Fraley at the synagogue, 1500 Sunset Blvd, Houston, TX 77005. Donations can also be made online at [www.EmanuElHouston.org](http://www.EmanuElHouston.org). Please make sure to specify which Shabbat service(s) you would like your flower fund donation listed. **In order to ensure the donations are listed, we ask that they be at the synagogue no later than the Wednesday before Shabbat.**

## EMANU EL AT A GLANCE THROUGH FEBRUARY 18

The below information contains a listing of events at Emanu El exclusive of our worship and Shabbat schedule, which can be found monthly on page 2.

As a congregation, we communicate in many ways. This calendar is supplemented by information that can be found throughout this edition of the *Bulletin*, the weekly Shabbat program, the weekly eLetter, on our website, and on our Facebook page.

### CALENDAR OF EVENTS

#### JANUARY

- 1/7 – Emanu Elders, 11:30 a.m.
- 1/9 – Work of Our Hands, 10:00 a.m.
- 1/9 – Sisterhood Book Review: *On the Sickle's Edge*, 12:30 p.m.
- 1/12 – My Generation Bingo Blitz, 5:00 p.m.
- 1/13 – Gathering Place, 10:00 a.m.
- 1/16 – Taste of Talmud: Lunch Time Text Study, 12:30 p.m.
- 1/17 – Classics' Post Shabbat Dinner, following 6:00 p.m. Shabbat services
- 1/22 – Kids' Meals, 9:30 a.m. (off-cycle date due to MLK)
- 1/23 – Sisterhood Visit to Maryam Islamic Center, 9:00 a.m.
- 1/25 – Bereavement Group First Session, 9:15 a.m.
- 1/26 – Cantors Concert, 4:00 p.m.
- 1/28 – Sack Lunches for SEARCH, 9:30 a.m.
- 1/30 – Marlee Matlin Presents *Nobody's Perfect: Achieving Inclusion, Diversity and Access*, 7:30 p.m.

#### FEBRUARY

- 2/3 – Helfman Parent Engagement/Yoga, 11:00 a.m.
- 2/4 – Emanu Elders, 11:30 a.m.
- 2/6 – Sisterhood's Judaism Through the Arts, 1:00 – 3:00 p.m. (MFAH)
- 2/6 – Emanu El Mahj Night, 5:30 p.m.
- 2/7 – Tot Shabbat, 6:30 p.m. (no dinner offering)
- 2/10 – Gathering Place, 10:00 a.m.
- 2/13 – Work of Our Hands, 10:00 a.m.
- 2/13 – Immigration: Current Crisis, Future Hope, 7:00 p.m.
- 2/15 – Classics' For the Love of Chocolate & Wine, 4:00 p.m. (Nos Caves Vin)
- 2/17 – Emanu El Mahj Afternoon, 1:00 p.m.
- 2/18 – Kids' Meals, 9:30 a.m.

**NEXT BULLETIN TO BE ISSUED: TUESDAY, FEBRUARY 4**

---

### Congregation Emanu El Sisterhood Wins WRJ Award



**Shirley Burkom (left) and then-Sisterhood President Diane Puschett were amongst a crew of Sisterhood members who spent hours assisting in the operations of Hurricane Harvey Day Camp. Their efforts and that of the Emanu El Sisterhood netted the organization a 'Gold Or Ami Award' by the Women of Reform Judaism.**

Congregation Emanu El Sisterhood has been chosen as a Gold 2020 Or Ami Award winner by the Women of Reform Judaism (WRJ) for its devoted participation in Hurricane Harvey Houston Day Camp.

Hurricane Harvey, the horrendous disaster that caused destruction and devastation to the lives of so many in the Houston community demonstrated outstanding acts of Tikkun Olam at Congregation Emanu El, Houston. Sisterhood played a major role in performing mitzvot of which the congregation and the community are immensely proud and grateful.

With partners in place, Hurricane Harvey Houston Day Camp was organized in 24 hours. Operation began August 31, 2017 and ended September 7, 2017. The camp was free to all participants and was funded by the URJ's Disaster Relief Fund. Arrangements were made by Greene Family Camp and the Evelyn Rubenstein Jewish Community Center and hosted by Congregation Emanu El to provide a safe place for those who needed childcare while focusing on restoring their lives or helping others who were impacted by the wake of Hurricane Harvey.

A major issue to be addressed for this huge undertaking was preparing and serving food. Sisterhood was called upon to manage the kitchen and food preparation. Sisterhood volunteers answered the call and those who were able helped to plan, prepare, cook and serve meals to more than 200 children for breakfast, lunch and dinner each day, with the addition of at least 100 meals for adults. Volunteers arrived at 8:00 a.m. to prepare for breakfast and left 12 hours later after planning the schedule and menu for the next day.

Every effort was made to accommodate the needs and preferences of the children. The Congregation welcomed all and provided a secure place for adults to share a meal, discuss their situations and seek guidance. Parents joined their children for dinner. There was food for all who entered the synagogue.

Inwardly and outwardly, we offer a place ever open to the people of our city.

The greatest reward for this arduous task which was a "labor of love" was hearing "thank you for paying attention to my child" from grateful parents who were so appreciative of the attention our sisterhood gave to their children. We were even told that "we make the best grilled cheese that they ever tasted." It brings great pleasure and gratification to know that Sisterhood was able to offer comfort and support that meant so much to so many at a time of such great upheaval in their lives.

Despite the devastating problems surrounding Hurricane Harvey Day Camp, it was a great opportunity to witness so many acts of mercy, kindness and Tikkun Olam by a community who demonstrated how it is possible for something wonderful and miraculous to emerge when all unite to work together.

### World Zionist Congress Elections Kick Off January 21



The World Zionist Congress elections are coming soon, and our congregation's votes are critical to maintaining a large Reform presence! The election is our chance to have the Reform Movement's voice and priorities heard in Israel. It's a powerful way to combat the discrimination the Reform Movement often faces from the Israeli government.

For example, because of the robust Reform Movement vote in the last WZC elections, we were able to have the largest number of seats in the North American delegation, 56 out of 145. We were then able to ensure that over \$4,000,000 a year (\$20 million over 5 years) of financial support goes to our Reform movement in Israel.

*continued next page*

In addition, we were able to appoint key professionals to carry out our Reform Jewish values within Israel's national institutions that help implement Reform values such as equality, pluralism, and the commitment to a two-state solution.

The Reform Movement has also joined forces with Israeli political parties to influence Israeli society in matters of conversion, marriage and divorce, religious pluralism, gender rights, and combatting racism; as a result, we have passed key resolutions in the World Zionist Organization's policy body for equality, transparency, and pluralism.

**Elections will be held from January 21 to March 11.** All voting will be completed online and will be accessible from mobile devices. It is a simple process and will take only a few minutes.

All members of Congregation Emanu El are eligible to vote, and we need everyone to vote in order to make sure our voices are heard.

Register to Vote (REQUIRED FOR ALL). You can register to vote in the US election for the 38th World Zionist Congress. Follow these simple steps to register to vote.

1. Click the Voter Registration button on the bottom left of the page.
2. Fill in your information and submit the form.
3. Check your email or SMS to receive your verification number and enter the number you received.
4. Proceed to payment and hit submit.
5. YOU ARE NOW REGISTERED TO VOTE!

In a few moments you will receive a "PIN Code" by email or SMS. Voting opens on January 21, 2020 and you will use this PIN Code to vote. You will receive a reminder notice with your PIN Code before then.

Watch our website, social media and congregational emails for more information on how to vote, or contact Fredi Bleeker Franks (fredi.bleeker@gmail.com) or Barbara Loeser (bloeser@sbcglobal.net) to learn more about the World Zionist Organization and the election.

## Community-Wide Yom Limmud to be Hosted at Beth Israel Sunday, February 16

The Jewish Federation of Greater Houston's annual Yom Limmud will take



place at Congregation Beth Israel, located at 5600 N. Braeswood.

Since 1995, the Federation has brought together Jews from all denominations to one place at one time each year to learn, shop, schmooze, nosh, sing and play together. More than 70 local rabbis, cantors, and Jewish professionals will present sessions on a wide variety of topics.

Yom Limmud is generously endowed by Chair King Backyard Store and the Barish Family. Online registration is available on the Federation website at [houstonjewish.org/yomlimmud](http://houstonjewish.org/yomlimmud). Don't miss this day to celebrate being Jewish! We anticipate sharing the sessions that members of the Emanu El family are presenting in the February edition of the *Bulletin*.

Congregation Emanu El looks forward to welcoming Yom Limmud back to our congregation in 2021.

## Congregation Emanu El Celebrates Carol & Barry Goodfriend on Over 12 Years & 100,000+ Sack Lunches of Service to Kids Meals

This past December, the volunteers and team involved in Congregation Emanu El's partnership with Kids' Meals celebrated the chairmanship of lay leaders Carol & Barry Goodfriend.

The Goodfriends have spent the last 12 and a half years chairing the synagogue's monthly efforts to make sack lunches for Kids' Meals, which tackles childhood hunger in the greater Houston area. Over 100,000 sack lunches have been made during the Goodfriends' tenure in this lay leadership role.



Pictured from left to right are Rabbi Oren Hayon, Barry Goodfriend, Donnie Bundman and Carol Goodfriend. Bundman along with Ron Nodler will fill the lay leader positions that will be vacated by the Goodfriends, who promised to still volunteer at Emanu El's monthly project with Kids' Meals.





We appreciate the thoughtfulness of those who remember and honor their friends and loved ones through their generous contributions through December 15, 2019.

**ACCESS FOR ALL**

*To ensure Emanu El is a welcoming, accessible and inclusive community*

In Honor of

**The Bar Mitzvah of JJ Silk**

Kathy Guttman

**The Bat Mitzvah of**

**Katharyn Fox Slater**

Caren & David Cowan

**The Speedy Recovery of**

**Renee Gerber**

Pat & Aaron Fradkin

In Memory of

**Jay Albert**

Pat & Aaron Fradkin

**ALAN GAYLOR TEACHER ASSISTANT FUND**

*To support Helfman Religious School teacher assistants*

In Memory of

**Jay Albert**

Joni Gaylor & Gary Lewis

**AUBREY & SYLVIA FARB COMMUNITY SERVICE FUND**

*To support small and emerging organizations that improve life for underserved Houstonians*

In Memory of

**Jay Albert**

Shelly Cyprus

Linda & Harris Miller

**Harold Caplan**

Linda & Harris Miller

**Emily Weingarten-Stein**

Dee Dee Dochen

Linda & Harris Miller

**BARBARA & MARK BROOKNER CAMBERSHIP FUND**

*To provide scholarships to send Helfman Religious School students to Greene Family Camp*

In Honor of

**The Bar Mitzvah of JJ Silk**

Kathy & Stephen Parven

**BECKER EARLY CHILDHOOD SCHOLARSHIP FUND**

*To provide Becker Early Childhood Center scholarships*

In Honor of

**The Bar Mitzvah of JJ Silk**

Judy & Allan Lazor

**The Birth of Benjamin**

**Leonard Parven**

Kathy & Stephen Parven

In Memory of

**Jay Albert**

Sara, Steve & Stephanie

Astrich

**Harold Caplan**

Joanie Murland

**BECKER EARLY CHILDHOOD FUND**

*To provide and enhance Becker Early Childhood Center*

In Memory of

**Jay Albert**

Anonymous

**Harold Caplan**

Barbara Loeser

**Claire Wolosky**

Sharon & Elliott Slusky

**CERSONSKY CEMETERY BEAUTIFICATION FUND**

*To maintain and enhance Emanu El Memorial Park*

In Memory of

**Ruth May**

Eileen Cersonsky

Kelly & James Cersonsky

Muriel Mendell

**Micky & Sidney Nagar**

Brad Nagar & Reid

Sutton

**Nathan Tudzin & Libbye**

**Faden-Cohen**

Shirley Tudzin

**CLERGY'S GOOD WORKS FUND**

*To provide Emanu El's clergy with funds to help individuals in need and to support organizations that benefit the community*

In Appreciation of

**Rabbi Roy Walter**

Kathy Guttman

In Honor of

**Rabbi Oren Hayon**

Jeffrey Miller

**Cheryl Levy serving as Co-Chair of Emanu El's 75th Anniversary**

Adele & Steve Croft

**Barbara Miller's Birthday**

Linda & Richard Stanley

**Rabbi Pamela Silk**

Cindy & David Senior

Sallye Wolf

**Shel Vedlitz**

Rita Blumenfeld

Cherill Dubinski

**The Bar Mitzvah of**

**Landon Lord**

Marlene & Brian Lord

**JJ Silk**

Carol & Larry Fradkin

Andi & Sandy Gaitz

Madeline Gold

Gail Shinbaum &

William Soffar

Susan & Syd Waldman

**The Speedy Recovery of**

**Barry Goodfriend**

Rozanne & Howard Rubin

**Franklin Roth**

Sheila & Jerry Kaplan

In Memory of

**Jay Albert**

Carol & Barry Goodfriend

Sheila & Jerry Kaplan

**Joan & Gerald Berenson**

Charlotte Axelrad

**Harold Caplan**

Carol & Barry Goodfriend

Gail Shinbaum &

William Soffar

**Saul Jacobson**

Ina Perlman

**Ruth May**

Carol & Barry Goodfriend

Sheila & Jerry Kaplan

Cheryl & Haran Levy

Ina Perlman

**Ann Rath**

Paula & Leo Gorelkin

**Jenny Susman**

Sallye Wolf

**Emily Weingarten-Stein**

Karen & Larry Feld

Barbara & Jim Rubenstein

Linda & Richard Stanley

Mona & David Tanner

**EDIS LEWIS PARKANS EMANU ELDERS FUND**

*To provide programs for Emanu Elders*

In Memory of

**Nancy Coben**

**Ruth May**

Sylvia & Steven Brody

**EDWARD WAYNE HUNGER FUND**

*To feed the hungry of Houston*

**A Donation**

The Heimbinder Family

Foundation

In Honor of

**The Bar Mitzvah of JJ Silk**

Irv & Barbara Black Levine

**The Speedy Recovery of**

**Sandy Harris**

Sara Astrich

Diane Puschett

In Memory of

**Emily Weingarten-Stein**

Sara Astrich

**GENERAL ENDOWMENT FUND**

*To provide for the general needs of Emanu El and its facilities*

In Appreciation of

**Robin & Rodney Roth**

Kathy Guttman

In Memory of

**Isidore Spitz**

William Spitz

**GREENE FAMILY CAMP FUND**

*To support Greene Family Camp*

In Honor of

**The Bar Mitzvah of JJ Silk**

Lisa Damen

Donna Fraley

Joy, Nic, Evelyn, Leo &

Lillie Krohn

Lorraine & Bruce Lessey

Diane Puschett

Gay Yellen & Don Reiser

Rona Weiner

In Memory of  
**Harold Caplan**  
**Emily Weingarten-Stein**  
Jennifer & Jeffrey Ross

**HAROLD REINGOLD**  
**RELIGIOUS SCHOOL FUND**  
*To enhance Helfman Religious School scholarships*  
In Memory of  
**Ruth May**  
Sharon & Bradley Rauch

**JEAN & JULIAN GOLDBERG**  
**CHILDREN'S FUND**  
*To provide arts programs for children*  
In Memory of  
**Emily Weingarten-Stein**  
Sondra Ross

**MAX & LOUISE**  
**BAMBERGER MEMORIAL FUND**  
*To create and promote programs that strength Emanu El's support for Israel*  
In Memory of  
**Stuart Bamberger**  
Nicci & Harvey Arsham

**RABBI ROY WALTER**  
**ENRICHMENT FUND**  
*To support spiritual and cultural enrichment*  
In Appreciation of  
**Evelyn & Franklin Roth**  
Kathy Guttman

In Honor of  
**Rabbi Roy Walter**  
Family of Rita Atlas  
Lauren & Darren Baum  
**The Speedy Recovery of LA Train**  
Claudia & Joel Selzer

In Memory of  
**Jay Albert**  
Irene Weingarten & Family  
**Bob Friedberg**  
Carol & Larry Fradkin  
**Ruth May**  
Julie & Peter Schneider  
Sharon & Elliott Slusky  
**Elaine Levy Proler**  
Sara Astrich

**RICKY SCHNURR**  
**CAMPERSHIP FUND**  
*To provide Greene Family Camp scholarships*  
In Honor of  
**Marilyn Ozaroff**  
Gayle Schnurr  
**Rose Sandler's Birthday**  
Elsa Laufman  
Gladys Schnurr

In Memory of  
**Stuart Bamberger**  
**Ruth May**  
**Eugene Wilkenfeld**  
Gladys Schnurr

**RIVA BURSTEN CARING**  
**CONGREGATION FUND**  
*To support programs that assist people in the community*  
In Honor of  
**The Speedy Recovery of Sandy Harris**  
**Joy Pulaski**  
Pat & Aaron Fradkin

**ROBERT I. KAHN SOCIAL JUSTICE FUND**  
*To send congregants to the Consultation on Conscience at the Religious Action Center*  
In Memory of  
**Saul Jacobson**  
Cindy & Brett Perlman

**RONALD BROCHSTEIN**  
**EARLY CHILDHOOD FUND**  
*To enhance preschool education*  
In Memory of  
**Jay Albert**  
Sandy & Richard Brochstein

**SISTERHOOD FUND**  
*To maintain and enhance the Sisterhood*  
In Memory of  
**Harold Caplan**  
Barbara & Allen Pauly  
**Jackie & Leon Glassgold's anniversary**  
The Gibson Family

**STILLMAN-LACK**  
**MEMORIAL LIBRARY FUND**  
*To maintain and enhance the Stillman-Lack Memorial Library*  
In Honor of  
**The Bar Mitzvah of JJ Silk**  
Caroline & Edward Kuntz

**SUSMAN FUND FOR FAMILY PROGRAMMING**  
*To support programs for families*  
In Honor of  
**Rona Weiner**  
Diana Brackman

In Memory of  
**Jan Finegold**  
Diana & Adam Brackman  
**Morris Glesby**  
Diana Brackman & Allen Becker  
**Jennifer Susman**  
Diana Brackman & Allen Becker  
Carol & Ronnie Rauch  
The Sprung Family  
**Richard Susman**  
Linda Susman  
**Eugene Wilkenfeld**  
Diana Brackman

**TEMPLE FUND**  
*To support the needs of the Temple and to fulfill the mission of Congregation Emanu El*  
**A Donation**  
Eva & Abraham Fenster  
Stephen Weil

In Appreciation of  
**Barbara & Allen Pauly**  
Kathy Guttman

In Honor of  
**Jeri Amundsen & Arthur Feldman**  
Sandy & Louis Gordon  
**Laurie Lee & Dico Hassid**  
Steven Fenberg  
**Cheryl Levy for being Co-Chair of Ever Forward to celebrate 75 years of Emanu El**  
**Elyse Kalmans for being Co-Chair of Ever Forward to celebrate 75 years of Emanu El**  
Donna & Philip Tenenbaum  
**Victor Elliott Pesin's Birthday**  
Madgelyn & Richard Pesin

**Rabbinical Staff**  
Gloria & Ben Tobor  
**Rose Sandler's Birthday**  
Barbara & Raymond Kalmans  
Carol & Michael Wilk  
**Helen Simkin's Birthday**  
Elaine Kuper

**Shel Vedlitz**  
Ginger Kaplan  
**The Bar Mitzvah of JJ Silk**  
Gloria & Ben Tobor  
**The Speedy Recovery of Sandy Harris**  
Gloria & Ben Tobor  
**Robert Mendelson**  
Pat & Aaron Fradkin

In Memory of  
**Jay Albert**  
Barbara & Raymond Kalmans  
Carol & Michael Wilk  
**Saul Jacobson**  
Barbara & Raymond Kalmans  
Gloria & Ben Tobor  
**Larry Layne**  
Rolaine Abramson  
Linda & Jerry Rubenstein

**Ruth May**  
Kathy & Drew Berkman  
Sharon & Dan Brener  
Evan Epstein  
Barbara & Raymond Kalmans  
Joy & Joe Kaplan  
Millicent Lewis  
Herman Schultz  
Aileen & Mark Weycer  
Carol & Michael Wilk  
Dolores Wilkenfeld

**Robyn Saghian**  
Laurie Lee & Dico Hassid  
**Emily Weingarten-Stein**  
Perri & Aaron Fink

**Harold S. Weiser**  
Weiser/Berkman Families

**Lawrence "Buddy" Weiser**  
Alice & Ralph Berkman

**Eugene Wilkenfeld**  
Sherry & Leonard Dubin  
Carol & Barry Goodfriend  
Barbara & Barry Lewis  
Lynne & Eugene Lipsitz  
Minnette Robinson  
Nancy & Frank Simon  
Carol & Michael Wilk

**Joseph Zerefsky**  
Paul Zarefsky





**LONGING AND BELONGING**

**SONGS OF HOME**

FEATURING CANTOR ROLLIN SIMMONS  
*and guests*

**SUNDAY, JANUARY 26, 2020**  
4:00 PM - 5:30 PM

FREE & OPEN TO THE PUBLIC      RECEPTION TO FOLLOW

 Congregation Emanu El



**MARLEE MATLIN**

**PRESENTS**

*Nobody's Perfect:  
Achieving Inclusion,  
Diversity & Access*

**AT EMANU EL**

**1.30.2020**

Mayor's Office for People with Disabilities

Host City Organizer **jfs** Alexander Institute for Inclusion

**ReelAbilities** FILM FESTIVAL | HOUSTON

*Local Jewish Ownership Makes the Difference*



- Alan Eisenman
- Andy Starr
- Richard Rosenberg
- Cheryl Rosenberg
- Mark Kaufman
- Dolores Wilkenfeld
- Robert Caplan
- Les Fox
- Jeff Friedman

 **Houston Jewish Funerals**  
Serving the Jewish Community since 2001

*Jewish Heritage... Jewish Traditions... Jewish-owned and operated*

**713.666.0257** • [HoustonJewishFunerals.com](http://HoustonJewishFunerals.com)



## grat·i·tude

/gradə,t(y)ōd/ noun

Definition: the quality of being thankful; readiness to show appreciation for and to return kindness.

I want to thank everyone for the honor and privilege of serving families within the community. It is most humbling to be given your trust and the great responsibility of taking care of your loved ones.

We serve our families from our hearts.



WALDMAN FUNERAL CARE

**Extraordinary Service. Compassionate Care.**

713-875-4811

[www.WaldmanFuneralCare.com](http://www.WaldmanFuneralCare.com)

Affiliated with Hardin Family Funeral Home

# Going beyond the call of duty.



I would love to guide you through the Real Estate process.

**TERRY COMINSKY**

Realtor-Associate®

Circle of Excellence | Hall of Fame

713.558.3331

[terry.cominsky@sothebyshomes.com](mailto:terry.cominsky@sothebyshomes.com)

Martha  
Turner

**Sotheby's**  
INTERNATIONAL REALTY

# SECOND NIGHT SEDER

THURSDAY, APRIL 9<sup>TH</sup>

6:00 PM



REGISTRATION OPENING SOON!

[EMANUELHOUSTON.ORG](http://EMANUELHOUSTON.ORG)



Break the fast with Congregation Emanu El's preferred caterer, Houston Catering Concepts and New York Deli & Coffee Shop!




PLACE YOUR ORDERS TODAY!

[WWW.HOUSTONCATERING.COM](http://WWW.HOUSTONCATERING.COM)



VOL. I

CONGREGATION EMANUEL  
SISTERHOOD



**WORDS**  
change the  
**WORLD**


SISTERHOOD LUNCHEON  
FEATURING BARBARA PIERCE BUSH

**WEDNESDAY, MARCH 26**  
11:30 AM - 1:00 PM

FIND OUT MORE:  
EMANUELHOUSTON.ORG/SISTERHOOD

2020

HOUSTON'S OLDEST JEWISH OWNED  
HEADSTONE & MONUMENT COMPANY  
BENCHES, BRONZE PLAQUES, CRYPT FACES & RESTORATION



EXCLUSIVELY JEWISH MEMORIALS  
VISIT OUR 30,000 SQ. FT. MANUFACTURING FACILITY

ASK FOR SANDY GAITZ  
OR LINDA SPENCER

**281-888-5522**



*Your home. Our expertise.®*



**Melinda Gordon**  
713.256.9145 | mgordon@bernsteinrealty.com



**Judy Levin**  
713.204.8807 | jlevin@bernsteinrealty.com

PLEASE CONTACT US FOR A FREE MARKET EVALUATION OF YOUR HOME!

**713.932.1032 | BernsteinRealty.com | @BernsteinRealty**



This Bulletin is printed on recycled paper.



Congregation Emanu El

Oren J. Hayon, Senior Rabbi  
 Pamela B. Silk, Associate Rabbi  
 Joshua R.S. Fixler, Assistant Rabbi  
 Roy A. Walter, Rabbi Emeritus  
 Rollin Simmons, Cantor  
 David Lamden, Executive Director  
 Jason Plotkin, Program Director  
 Paula Katz, Early Childhood Director  
 Stefani Carlson, Director of  
 Congregational Learning

Rodney Roth, President  
 Jeri Amundsen, Senior Vice President  
 Todd Slobin, Vice President - Personnel  
 Helen Dreyfus, Vice President - Education  
 Dawn Blitz, Vice President - Committees/  
 Volunteers  
 Ben Miller, Vice President - Committees/  
 Volunteers  
 Stuart Gaylor, Treasurer  
 Laura Mayer, Secretary  
 Jeff Basen-Engquist, Honorary President  
 Andrew Gass, Brotherhood President  
 Claire Brooks & Carol Sue Zions,  
 Sisterhood Presidents

EMANUELHOUSTON.ORG

SAVE THE DATE:

7th Annual Second Night Seder  
Thursday, April 9, 6:00 p.m.

It's not too early to start thinking about Second Night Seder at Congregation Emanu El. This multi-generational evening led by the Congregation Emanu El clergy team features a fully catered meal by Houston Catering Concepts that will include all the traditional seder items from matzoh ball soup to gefilte fish.

Registration opens later this month with a deadline of **Wednesday, April 1** or upon our 350-participant capacity being achieved.

For more information, contact Jason Plotkin at 713.535.6414 or [jasonp@emanuelhouston.org](mailto:jasonp@emanuelhouston.org).



LIKE US ON FACEBOOK

[www.facebook.com/emanuelhouston](http://www.facebook.com/emanuelhouston)