



Bulletin

OCTOBER 3, 2022 | 8 TISHRI 5783

VOLUME 77 NUMBER 1

FROM RABBI HAYON



Sukkot is meant to be a time when we open our hearts to each other, sharing conversation and a meal with those we love, or those we have only just met.

Just four short days after the shofar’s final note is blown and Yom Kippur comes to an end, we welcome the next Jewish festival this autumn: Sukkot. The requirements of its observance are laid out in the 23rd chapter of the *Book of Leviticus*, which describes in detail the obligations of how we are to uphold *Chag HaSukkot*, translated literally as “*The Festival of Booths*.”

Elsewhere in the Torah, however, this holiday is called by a different name. In the *Book of Exodus*, the text instructs us to celebrate the fall harvest with the observance of *Chag HaAsif*, which literally means “*The Festival of Ingathering*.” It is clear from the context of these two sections of the Torah that both citations are referring to the same holiday. What special insight are we to gain from this second, lesser-known name of this festival, and what is the “ingathering” it is meant to celebrate?

The easiest answer to this question is that the “asif” – “ingathering” – refers to the collection of autumn produce and the annual acknowledgment of a bountiful harvest for which our ancestors would joyfully give thanks in ancient days. But there is a second answer as well. It is not only fruit and vegetables that our Torah commands

continued on page 2



Sukkot on Sunset

Celebrate the joy of Sukkot together this season as we gather in our new Sukkah for a variety of activities throughout the festival. Sukkot on Sunset is back to kick off the festivities with food and fun for the whole family, delicious BBQ and a beautiful service in our Sukkah in the Sculpture Garden. Check out page 9 for the complete schedule of events throughout the week of Sukkot.



Music at Emanu El Season Preview

Inside this issue is your sneak peek at the line up for the inaugural season of Music at Emanu El! Delight in musical events throughout the year covering a wide array of Jewish music. Get a glimpse of the full schedule of events on page 11.

WORSHIP SERVICES

Friday night services are streamed on our website, Facebook page, Roku channel, and YouTube. Saturday morning B'nei Mitzvah services are available solely on the website and Saturday services take place in Proler Chapel as an in-person experience only. Any changes will be shared via the regular synagogue communications.

Shabbat Shuvah Saturday, October 1

10:30 a.m., Shabbat Morning Service, Proler Chapel
Shabbat Schmooze & Schmear, immediately following services

OUTDOOR HIGH HOLY DAY FAMILY EXPERIENCE Sunday, October 2

9:00 a.m., 7112 Newcastle St.

Cemetery Service Sunday, October 2

5:00 p.m., Emanu El Memorial Park, 8341 Bissonnet St.

KOL NIDRE Tuesday, October 4

7:30 p.m., Evening Service, Barish Sanctuary

YOM KIPPUR Wednesday, October 5

9:00 a.m., Children's Service, Barish Sanctuary
10:30 a.m., Morning Service, Barish Sanctuary
12:30 p.m., Afternoon Experience, various locations
3:30 p.m., Healing & Wholeness, Barish Sanctuary
4:30 p.m., Yizkor, Barish Sanctuary
5:30 p.m., N'ilah, Barish Sanctuary

Shabbat Haazinu Friday, October 7

6:00 p.m., Kabbalat Shabbat, Proler Chapel

Saturday, October 8

10:30 a.m., Shabbat Morning Service, Proler Chapel

Shabbat Chol HaMo-eid Sukkot Friday, October 14

6:00 p.m., Kabbalat Shabbat, Proler Chapel

Saturday, October 15

10:30 a.m., Shabbat Morning Service, Proler Chapel
10:30 a.m., Shabbat Morning Service, Barish Sanctuary
Bar Mitzvah of **Owen Bloom**, son of Jeff & Sara Bloom

Shabbat B'reishit Friday, October 21

6:00 p.m., Kabbalat Shabbat, Proler Chapel

Saturday, October 22

10:30 a.m., Shabbat Morning Service, Proler Chapel
10:30 a.m., Shabbat Morning Service, Barish Sanctuary
B'nei Mitzvah of **Ryan Berger**, son of Eric Berger & Lauren Brackman Berger, and **Eli Weinberg**, son of Jeffrey & Jamie Weinberg

Shabbat Noach Artist-in-Residence Weekend with Dan Nichols Friday, October 28

6:00 p.m., Kabbalat Shabbat

Saturday, October 29

10:30 a.m., Shabbat Morning Service, Proler Chapel
10:30 a.m., Shabbat Morning Service, Barish Sanctuary
B'nei Mitzvah of **Owen Leif**, son of Joshua & Jessica Leif, and **Brody Mark**, son of Brandon & Jenny Mark

Shabbat Leck L'cha Friday, November 4

5:45 p.m., Tot Shabbat Dinner, location to be determined
6:00 p.m., Kabbalat Shabbat, Proler Chapel

Saturday, November 5

10:30 a.m., Shabbat Morning Service, Barish Sanctuary
Shabbat Schmooze & Schmear, immediately following services

Friday, November 11

6:00 p.m., Heritage Shabbat, Proler Chapel

Saturday, November 12

10:30 a.m., Shabbat Morning Service, Proler Chapel
10:30 a.m. Shabbat Morning Service, Barish Sanctuary

TOT SHABBAT Friday, November 4

For families with children up to age 5, a short joyous, lively service geared for our youngest members. Come early for a laid-back pre-service dinner.

FROM RABBI HAYON *continued from page 1*

to gather on Sukkot; we are also invited to gather **each other** into the fragile huts we build each fall. Sukkot is meant to be a time when we open our hearts to each other, sharing conversation and a meal with those we love, or those we have only just met.

Congregation Emanu El Bulletin (USPS 399-430) is published monthly by Congregation Emanu El, 1500 Sunset, Houston, Texas 77005. Periodical paid at Houston, Texas. POSTMASTER: send address changes to Congregation Emanu El Bulletin, 1500 Sunset, Houston, Texas 77005.

This year at temple, our program calendar will include an expanded list of offerings for Sukkot. We are excited for you to join us in Emanu El's new, larger sukkah, which will accommodate an "ingathering" of even more friends, both old and new. I look forward to sharing the rich harvest of this season with you and our entire congregational family.

Join us for this year's Sukkot on Sunset celebration on **Sunday, October 9 from 4:00 p.m. - 7:00 p.m.**

LIFECYCLE EVENTS

WEDDINGS

Robert Nathan & Jordan Magidson

Molly James & Zachary Freedman

BIRTHS

August Iverson Cruz, son of Megan & John Cruz; grandson of Rhonda & Seth Freedman; great grandson of Helen Simkin

Benjamin George Christie, son of Ellen & Jacob Christie; grandson of Heidi Kaplan & Peter Christie, Sandra & Vlad Shmunis.

DEATHS

Terre Brook, wife of Edward M. Brook; mother of Tammy & Tom Miller and Debbie & Fred Lowe; stepmother of Julie & Drew Alexander, Helen & John Brook, and Sara Brook; step-grandmother of Sasha & Kevin Alexander, Amy Alexander, Jennifer Kagan, Lindsey Brook, and Natalie Brook; step-great-grandmother of Aurora, Darek, and Zoe Alexander

Dr. Joseph Engler, father of Susan & Andrew Engler, Debra & Alan Engler, Myrna & David Engler and Judy & Larry Sax; grandfather of Ashley & Jonah Lopatin, Maggie & Asa Lopatin, Amy Engler, Kelly Engler, Rebecca Sax, and Nicole Sax; great-grandfather of Gray, Lily, Noah, and Tessa

Marianne Greenfield, wife of Dr. Larry Greenfield; mother of Elizabeth & Matt Krohn, Deborah Zissman, and Michelle & Howard Stone; grandmother of Jeremy Balkin, Shana & Andy Balkin, Mallory & Harrison Botwin, Joy & Nic Krohn, Suzie & Jonathan Reckles, Meredith & Seth Bleiber, Heather & Doug Fishman, Tamara & Eric Zissman, Mindy & Mark Spellman, and Christina & Alex Stone; great-grandmother of many; sibling of Kathy & Glen Duval and Linda & Richard Stanley

Stan Gritz, son-in-law of our member Shirley Schnoll; husband of Amy Schnoll Gritz; stepfather of Sonia Spaw; brother-in-law of Holly Hunsicker and Beth Ann Scher

Miles Schlesinger, great-grandson of our member Victor Shainock; son of Jackie & Reed Schlesinger; grandson of Julie Shainock Pearson & Scott Pearson

Alma Wadler, mother of our member Ira & Sharon Wadler; grandmother of Vanessa & Andrew Wadler and Rachel Wadler; great-grandmother of Robert, Ava, and Julia Wadler

A Notice About Bereavement Communications

Bereavement notices for our temple family are distributed with the permission of the deceased's family, and the timing of these notices is dictated by the family's request. Of course, each family grieves in its own way, and we are grateful for our congregation's patience and understanding with different families' preferences about how their loss is publicized.



Find Us On YouTube!

Looking for a one-stop shop to catch the latest worship services, musical selections, videos from our schools and more?

Tons of new content has been created since the pandemic and has been posted to Emanu El's YouTube page, with dozens and dozens more from the archives also shared.

Find us on YouTube by searching "Emanu El Houston Video" and subscribe today!

Our clergy want to know . . .

If you or a loved one is sick or hospitalized please let us know.

Contact the synagogue at 713.529.5771, so that our rabbis can reach out and visit and be a source of strength and support.

Visiting the sick and praying for those who are ill are important and meaningful mitzvot.

SISTERHOOD NEWS & HAPPENINGS

November 2022



BOOK REVIEW:

Mah Jongg Mondays by Fern Bernstein

THURSDAY, NOVEMBER 10, 7:00 PM - 8:30 PM

Join the Sisterhood for a review of the book, *Mah Jongg Mondays: A Memoir of Friendship, Love, and Faith*, reviewed by Carol Sue Zionts. Bernstein illustrates the benefits of Monday Mah Jongg threading the mental challenge, support and deep bonds of devoted friendships.

This heartwarming story illustrates the wonderful things that can happen when five women are destined to come together to play an old Chinese game, sitting around a table with tiles, dice and a mah jongg card.

WOMEN'S DAY, SAVE THE DATE!

Navigating the Future: Challenges Facing Nonprofits (in-person)

Thursday, November 17, 10:00 a.m.

Celebrate Women's Day at Congregation Emanu El with your sisters by joining Amy Davis from KPRC News who will moderate a panel of distinguished nonprofit leaders on the problems they are facing and their plans to overcome them. Don't miss this exciting and thought-provoking conversation followed by lunch. Sisterhood members: \$20, non-members: \$25.



Special guests for the panel discussion include:

MODERATOR: Amy Davis – Consumer Investigative Reporter for KPRC Channel

Elena Marks – President and CEO of Episcopal Houston Foundation

Martin Cominsky – President and CEO of Interfaith Ministries for Greater Houston

Brian Greene – President and CEO of Houston Food Bank

Register online by visiting our web calendar at emanuelhouston.org or contact Sisterhood at 713.529.5771, ext. 233 or sishood@emanuelhouston.org by **Friday, November 11**.



Amy Davis



Get Social With Us!

Did you know Congregation Emanu El is on Instagram? In addition to our active Facebook pages, be sure to follow us on Instagram to catch snap shots of happenings around the synagogue. From camel sightings to social action, a thriving youth group to clergy in action and more!

Find us on Instagram at [instagram.com/emanuelhouston](https://www.instagram.com/emanuelhouston) or, if you are already a member, find us at [@emanuelhouston](https://www.instagram.com/emanuelhouston). And yes, please feel free to “check-in” at Emanu El when you are here for events and happenings!



Helfman Religious School

Helfman Religious School is back in session! Take a peek into all the marvelous learning experiences already happening within our community!





Becker School is off to a stellar start this school year and brimming with happy children!

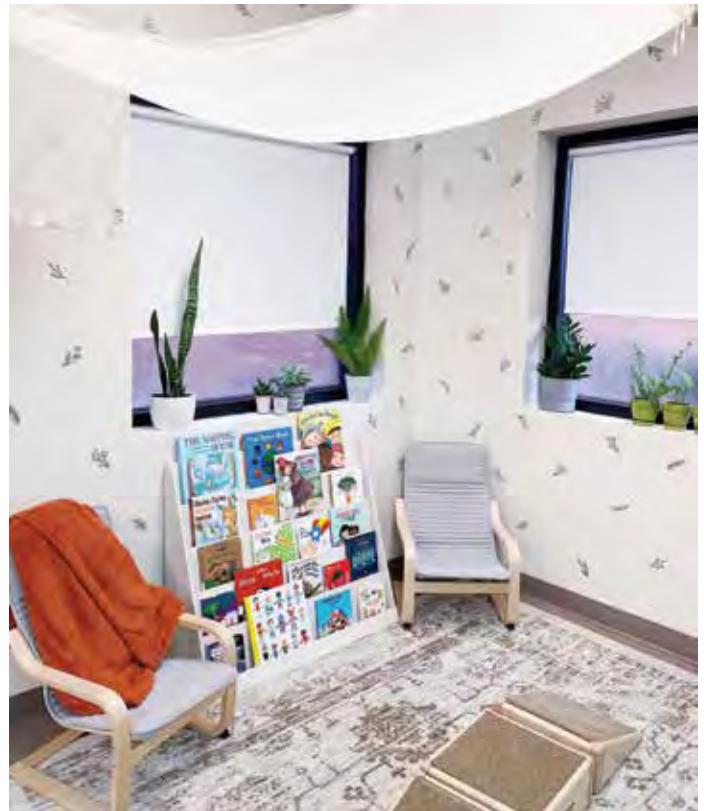
Teachers spent time this summer learning about classroom environments and the notion of the classroom as the third teacher. This led to beautiful classroom renovations where teachers have created intentional spaces that encourage students to wonder about the world around them and create their own path of learning.

We are open for in-person tours and encourage families to reach out to Judy Lazor (judy@emanuelhouston.org) to schedule a tour.

Becker Presents Coffee & Conversation Thursday, October 20, 9:15 a.m. – 10:15 a.m.

Join us for Coffee & Conversation during which we will learn from registered and licensed Dietitian Nutritionist, Sara P. Gonzalez, MS, RDN/LDN, IBCLC. She will discuss early childhood nutrition and how to help our selective eaters. Please drop off your children in carpool, then park in our west lot or parking garage. We will be in the youth lounge with coffee and tea.

Questions? Contact: elizabeth@emanuelhouston.org.



Jewish Federation of Greater Houston Community Updates

The Jewish Federation of Greater Houston is here to move our community from strength to strength by serving as the leading fundraiser, convener, and connector for our Jewish community. Recently, the Federation completed its 2022 Annual Campaign, raising more than \$17.7 million to support local organizations and programs as well as efforts in Israel and overseas. The Federation is pleased to announce important ways it is supporting and engaging with the community.

New Community Security Director Hired by the Federation

Thanks to the generosity of Joan and Stanford “z’l” Alexander, the Federation was able to launch Houston’s Jewish Community Security Program and hire its first director. Alfred “Al” Tribble, a former special agent for the FBI with more than 27 years of experience, began in this role in June.

This position supports the entirety of our Jewish community. Tribble will work with leadership at our synagogues, schools, and other Jewish institutions to provide training, do threat assessments, and serve as our community liaison with law enforcement.

Because of the rise in antisemitism and gun violence, including specific incidents in Pittsburgh, Poway, and Colleyville, the Federation has undertaken this effort to help maintain community safety.

The first Town Halls on Security were held in September at West Houston Jewish Community Center and Emery/Weiner School. Community members are invited to attend. Please visit houstonjewish.org/security for additional information related to online trainings provided by Secure Community Network (SCN).

Federation Launches Listening Project

This fall the Federation will be launching a community listening project, *Hineni Houston: Come and Be Heard*. Its purpose is to get input from as many in the local Jewish community as possible to gather input on the future of Houston’s Jewish community. This fall community volunteers will hold listening sessions varying from individual interviews to group feedback sessions to open spaces where individuals can submit thoughts in writing. From **December 2-4**, a Hineni Houston Listening Weekend will be held at multiple locations throughout our community. If you would like to learn more or participate in a listening event, please email hello@houstonjewish.org.

Community Mission to Israel Returns this November

You are invited to join the Federation’s community Mission to Israel this fall from **November 7-13**. You can customize your trip by choosing from four track options and select additional electives to enhance your trip. Participants also will visit Federation-supported programs in Israel and enjoy a special Shabbat in Jerusalem. Don’t miss this first-class experience.

Mission Chairs are Leslie and Russ Robinson. Learn more and register now at houstonjewish.org/mission2022. Register today! Limited spots remain!

MEMBERSHIP NEWS

Welcome Our Newest Members

We are pleased to welcome the newest members to our congregational family. Please be sure to introduce yourself to our newcomers as they become a part of our community.

**Tawnia & David Adelman, daughter Sophia
Julie & Dan Cotuno, children Grayson & Lexi
Elizabeth Essner & Nils d’Aulaire, children
Ella & Penelope
Marni & Ariel Farahi, son Jamie
Bernadine Franklin
Jacqueline Franklin & Louis Williams,
son Ethan
Paula & Jonathan Goldberg, children Alex,
Emma, & Olivia
Amy & Eric Heppen, son Owen
Carol & David Kahn
Lorna & Lester Klebe
Melissa & Jason Lacombe, daughter Maddie
Mark Lipkin
Yael & Gopi Mohan, children Lilia, Misha,
& Talia
Samuel Panter, son Luke
Sarah & Daniel Richmond, children Lily,
& Sylvia
Alisha & Jonathan Risch, children Jacob,
Madelyn, & Rebecca
Annie & Greg Rosenfeld, son Beau
Ellen Safier & Efrain Bleiberg
Annie & Christopher Schechter,
daughter Edison
Sarah Schwartz, children Lucy & Margot
Ashly & Jose Tamayo, children Charlize,
Liberty, & Orion**

New members will be shared in the *Bulletin* regularly. Know someone interested in becoming a part of our community? New to town or looking to find a way to connect with Emanu El? Contact Anna Shabtay at annas@emanuelhouston.org or 713.529.5771, ext. 261.

Programming at Emanu El



Congregation Emanu El

SCHMOOZE & SCHMEAR

Join us on the first Saturday of each month for an engaging and spiritual prayer service at 10:30 a.m., then stay after the service for a nosh.

Saturday October 1
Following Services
(in-person)



MADCAP COMEDY

Ken Ludwig's LEND ME A SOPRANO

DIRECTED BY
ELEANOR HOLDRIDGE

**Night out at the Alley Theatre:
Lend Me A Soprano
October 8, 8:00 p.m. – 10:00 p.m.**

Adult theater lovers, this one's for you! Come out for a night at the Alley Theatre to see Ken Ludwig's latest play, *Lend Me A Soprano*, a screwball comedy guaranteed to leave you teary-eyed with laughter. Group ticketing available at various price levels. An optional group dinner will be held beforehand. Please register online at emanuelhouston.org/calendar. For more details, please contact Amy Hartley at amyh@emanuelhouston.org.

Taste of Talmud

**October 6, 12:30 p.m. - 1:30 p.m.
(digital)**

Do you want all the benefits of a book discussion group without the need to commit to extensive reading ahead of time? Do you want to connect with both your Judaism and a fun group of people? If your answer to any of these questions is yes, then join us for A Taste of Talmud, our monthly study of rabbinic texts, led by Director of Congregational Learning Stefani Carlson.



Stefani Carlson

No experience or Hebrew knowledge required: all texts are provided in translation. Join us on Zoom – all are welcome in our virtual beit midrash (house of study)! For more information, contact Stefani Carlson at stefanic@emanuelhouston.org or 713.529.5771, ext. 251.

Widow 2 Widow is Back!

Sunday, October 23, 3:00 p.m. – 6:00 p.m.

If you are a woman who has lost a significant other, you're invited to join the Widow 2 Widow ladies at Emanu El for their first comeback event of the year: Gathering with Games! Bring your mah jongg, canasta, or scrabble sets and join us for a laid-back afternoon in the Board Room full of fun, laughter and a light dinner.

Please register in advance online. The cost for this program is \$18 per person. Questions? Contact Rona Weiner at ronaweiner777@gmail.com or Marilyn Waldman nicmar@aol.com.

continued next page

SUKKOT

Congregation Emanu El is celebrating Sukkot in new ways this year with these not-to-be-missed events related to community and social action with gratitude for being together. See you there!



Sukkot on Sunset

October 9, 4:00 p.m. – 7:00 p.m.
Sculpture Garden and Feld Hall

The fun will include all the favorites, including our rock-climbing wall, hayrides, bounce houses, crafts, and live music. This event has been enhanced to include something for everyone, including delicious BBQ, refreshments and an Erev Sukkot service in the Sukkah! The cost for this event is \$5 for individual member passes (three people or less), \$20 for a member family pass (four people or more) and \$10 per person for non-member passes. Register online today by visiting our web calendar at emanuelhouston.org and join us!

YP JED Talk in the Sukkah

**Monday, October 10,
8:00 p.m. – 9:00 p.m.**

Join accomplished actor and author Alexandra Silber for an evening of story and song. Coming off her recent stint as the lead in the Alley Theatre's production of *Lend Me A Soprano*, Ms. Silber will share the story of her life's journey, which has taken her to Broadway and London's East End, and even to *Fiddler on the Roof's* Anatevka. Join us to learn about Ms. Silber's Jewish journey and to fulfill the mitzvah of eating in the Sukkah! Drinks and dessert will be provided. Register online today by visiting our web calendar at emanuelhouston.org.



Alexandra Silber

Postcards to Get out the Vote!

Wednesday October 12, 6:00 p.m. – 7:00 p.m.

Come enjoy the Emanu El sukkah and help the Social Justice Core Team and EEVotes write postcards to engage under-represented voters around Texas and encourage them to vote. This simple act of non-partisan service can make a huge difference in voter turnout.

Friday Night Shabbat Oneg (in-person)

Friday October 14, following services

Our weekly gathering as a congregation will be followed by a special light oneg in our gorgeous new

Sukkah. As Rabbi Hayon states, "Sukkot is meant to be a time when we open our hearts to each other." Come gather with your community and connect with your temple family.

Spirits in the Sukkah (in-person)

Saturday, October 15, 7:00 p.m.



Complete your Sukkot celebrations with Spirits in the Sukkah under the stars! Open to all adults 21 and up, come enjoy tastings of the uniquely-Texan spirits from William Price Distilling while enjoying hors d'ouvres, lively music and L'chaims! Price is \$20 per person.

**THE HOUSTON TEXANS
WOULD LIKE TO WELCOME**

**HOUSTON SYNAGOGUES &
CONGREGATIONS FOR OUR JEWISH HERITAGE GAME**

Preferred rate tickets and Texans kippah's are available on the attached link & QR code for purchase

**Kippah's only available for the first 150 purchasers or before 9/30*

HOUSTON TEXANS VS. TENNESSEE TITANS
OCTOBER 30 | 3:05 PM

<https://fevo.me/texansjewishheritage>

continued next page



Note From Cantor Simmons



Cantor Simmons

Emanu El has always been a hub of excellence when it comes to music. We now continue this tradition with a new annual musical series, as we welcome some of the best Jewish musicians from around the country, highlight the talent and spirit within our own Emanu El community, and begin a new partnership with The Shepherd School of Music.

Jewish music is a difficult entity to define. Is it music with a specific sound, or music by a Jewish composer, or music sung in Hebrew? These categories cannot even begin to define this genre. Through the musical events of our Music at Emanu El series, we will explore the vast range of music that can be considered Jewish.

Dan Nichols, a world-renowned Jewish musician, will launch our inaugural season, as our artist-in-residence at the end of October. Dan brings his classically trained vocals, brilliant guitar playing, and authentic spirit to create a sense of joy and wonder in worship and learning. I have been honored to experience his prayer-leading and teaching over the years, and I can say it is a truly magical experience to be in his presence.

We are privileged to begin a new partnership with The Shepherd School of Music, just across the street from us at Rice University. Two concerts of our series will be led by cellist Kathy Audas, in collaboration with her colleagues under direction from faculty members Brinton Smith and Norman Fischer. We are so blessed to

have Brinton play Kol Nidre every year during our Yom Kippur evening service. These wonderful concerts will feature the music of Jewish composers across different time periods allowing us to experience the music while learning more about it and the composers.

We are thrilled to include members from our beloved Emanu El community as part of our series. In December, we will present our annual volunteer choir Holiday Showcase. If you haven't attended this event in the past, I encourage you to join us for a fun and joyful evening full of your favorite showtunes, performed by our talented and energetic volunteer choir, bedecked in sparkles, and led by the legendary Ann Frohbieter. Our beloved pianist, Phillip Hall, will be bringing his choir, The Phillip Hall Singers, to join us for an engaging evening of music for our Shabbat worship on MLK weekend.

To close out the year, we will celebrate Israel's 75th birthday with a special concert. I am honored to bring in my talented colleagues Cantors David Berger, Galit Dadoun-Cohen and Leigh Korn to collaborate with me on a program that will span many genres, from chazzanut to Israeli folk song to art songs by Israeli composers and more.

We hope you will join us for these exciting events – it will be quite a year!

Cantor Rollin Simmons

To become a Friend of Music at Emanu El, or to learn more about this year's programs, please visit emanuelhouston.org/worship/mee or call Anna Shabtay, 713.529.5771, ext. 261.

Music at Emanu El Is
Supported by the:

HJCF
Houston Jewish
Community Foundation

LINEUP OF EVENTS

Dan Nichols
October 28-30



**MLK Shabbat With
The Phillip Hall Singers**
January 13, 2023



Shepherd School Of Music Concerts
November 13, 2022 and February 12, 2023



**Israel @ 75: Celebrating the
Hope in Harmony**
Yom Ha'atzmaut – Israel's 75th Birthday
April 25, 2023



**Emanu El Volunteer Choir Holiday
Showcase**
December 11, 2022





Welcome Home Baskets

Join us in *tikkun olam* as we welcome 40 families to their new homes. Social Action has always been at the heart of Congregation Emanu El.

In collaboration with Interfaith Ministries and Jewish Family Services, Sisterhood is leading the way in this congregation-wide initiative to assist newly arrived immigrant families. Each family will be provided with a 'Welcome Home Basket' of essential items necessary as they move into their empty apartment.

Join us in Tikkun Olam as we welcome 40 families to their new homes. Social Action has always been at the heart of Congregation Emanu El. In collaboration with Interfaith Ministries and Jewish Family Services, Sisterhood is leading the way in this congregation-wide initiative to assist newly arrived immigrant families. Each family will be provided with a 'Welcome Home Basket' of essential items necessary as they move into their empty apartment.

How you can help:

- **Donate items or Gift cards:** Volunteers will be in the portico to help unload in person donations on **October 9, 3:30 – 5:30 p.m.** when you come for Sukkot on Sunset or **November 13, 10:00 a.m. – 12:00 p.m.** Show to to Sukkot on Sunset with a donation and your name will be entered in a raffle to win a prize!
- **Drop off items to donation bins** in the rotunda at your convenience during Temple business hours.
- **Amazon and Target Gift Registries:** Help by gifting donations directly from the registry links found at emanuelhouston.org/welcomehomebaskets.
- **Donate funds to help** by visiting our webpage at emanuelhouston.org/welcomehomebaskets, and clicking "Donate Online."
- **Help through Amazon and Target** by simplifying the ordering process with items delivered directly to Emanu El. Visit the webpage to find the links for donating directly through Amazon and Target.
- **Volunteer** to sort items, assemble baskets and/or deliver baskets to families. Email: welcomedbasket22@gmail.com to volunteer.

New/Like New Items Needed by Families include:

Linens; Kitchen items: Utensils, tools, dishware, mugs, pots and pans; Small appliances: coffee maker, toaster, kettle, etc.; Basic Paper Products: toilet paper, paper towels; Cleaning Supplies: dish soap, body soap, detergent; Basic Tools: hammer, screwdriver, measuring tape.



Simchat Torah: Jazz, Java and Jive with Dee Dee & Mike (in-person) Sunday October 16, 7:00 p.m.

Come celebrate Simchat Torah with Dee Dee and Mike as they present their energetic "Jazz, Java and Jive" to Congregation Emanu El in a relaxed coffee-house-vibe setting. A delightful hour of genre-transitioning music, Dee Dee and Mike will perform favorites from an extensive list of favorite jazz, Jewish and pop songs that they've sung together and individually throughout their 25-year musical friendship.

This joyful evening will include drinks and refreshments, and a brief intermission from the musical program so we can share some holiday-themed study with temple clergy. Please register in advance online by visiting our web calendar at emanuelhouston.org.



A collaboration of synagogues and community partners enabling food security and nutritional self-sufficiency in Houston.



HOW

- Together with The Way Home, a program of the Houston Coalition for the Homeless, we identify apartment communities that house formerly homeless families and individuals.
- We partner with Second Servings of Houston to bring their PopUp Grocery Store Program, which provides healthy food choices, to a selected apartment community.
- Synagogue volunteers set up and assist at the monthly PopUp Grocery Store.
- Apartment residents can select nutritious food at the PopUp Grocery Store at no cost.
- Onsite and virtual nutritionists and dieticians enable residents to begin or continue their journey toward food security and making healthy food choices.



WHY

- More than 16% of Houstonians are food insecure and have limited or uncertain access to enough food, especially healthy options.
- Demand at the Houston Food Bank soared 30% in 2021, adding to food access issues.
- Food insecurity can have significant negative implications on a person's health.
- The model of enabling and teaching aligns with the Jewish values of Tzedakah (justice and righteous giving). We can help food-insecure Houstonians most when we supply healthy food and offer tools and skills to become more self-sufficient.



WHO

Collaborating Partners: [Houston Coalition for the Homeless](#), [Second Servings of Houston](#), [UT Health](#). **Advisory Partners:** [Target Hunger](#), [Emergency Aid Coalition](#), [City of Houston](#)



VOLUNTEER WITH US
FoodandFaithCollaborative@gmail.com



We appreciate the thoughtfulness of those who remember and honor their friends and loved ones through their generous contributions through September 14, 2022.

ACCESS FOR ALL FUND

To ensure Emanu El is a welcoming, accessible, and inclusive community

In Memory of
Martin Grabois
Carol Tuttle

BECKER EARLY CHILDHOOD FUND

To provide and enhance the Becker School

In Memory of
Michael Epstein
Arthur Kotlen
Evelyn Roth
Tracey, Dean & Jenna Blumrosen

BECKER EARLY CHILDHOOD SCHOLARSHIP FUND

To provide Becker School scholarships

In Honor of
The Birthday of Robert Schaffer
Barbara & Don Schaffer

CHESTER MARCUS CAMPERSHIP FUND

To provide Greene Family Camp scholarships

In Memory of
Bradley Borden
Anonymous
Joni & Bob Kaiser
Lynette Rauch
Marlene Rubin

CLERGY'S GOOD WORKS FUND

To provide Emanu El's clergy with funds to help individuals in need and to support organizations that benefit the community

In Appreciation of
The Emanu El Clergy
Kathryn & Jonathan Paine
Rabbi Oren Hayon
Stacey & Johnny Siegel

In Honor of
The Anniversary of Pat & Aaron Fradkin
Rozanne & Howard Rubin

In Memory of
Stanford Alexander
Carole & M.M. Feld, Jr.
Terre Brook
Adele & Steve Croft
June & Julian Silverblatt
Michael Epstein

Eileen & Dr. Richard Barrett
Sonia & Peter Benjamin
Robert J. Carpenter, Jr.
Dee Dee Dochen
Yvonne Gold
Tom Greider
Terri & Joseph Gugenheim
Carol & Leonard Hoffman
Susan & David Morris
Daniel, Heather, Isabelle, & Emily Pesikoff
Kitty & Richard Rabinow
Susan G. Rivkind &

Richard L. Zucker
Helen & Larry Rose
Linda & Allen Rosenzweig
Margaret & Paul Salmonsens
Barbara Samuels
June & Julian Silverblatt
Ellie & Jon Tutz
Cory Walker
Diane Winegar

Lois Frankel
Martin Grabois
Jerome Kosoy
Paula & Irving Pozmantier

Jerold B. Katz
Susan & Gerald Anhalt
Nicole & Evan H. Katz

Arthur Kotlen
Susan & Ed Kahn
Paula & Irving Pozmantier
Helen & Larry Rose

Sadye Rosmarin
Marie Brochstein
Frank Yelin
Sonia & Peter Benjamin
Sharon & Robert Bishin

EDWARD WAYNE HUNGER FUND

To feed the hungry of Houston

In Honor of
The Anniversary of Rona & L.A. Train
The Birthday of Rona Train
Marsha Wallace

In Memory of
Minnie Duval
Kathleen & Glen Duval
Jerome Kosoy
Marlene Rubin

ETERNAL FLAME FUND

To provide for the general needs of Emanu El and its facilities

In Appreciation of
Rabbi Pamela Silk
fredi Bleeker Franks

In Memory of
Jackie Cutler
Laurel & Dennis Brown
Jean Albert Duval
Marianne & Larry Greenfield

Michael Epstein
Stan Gritz
Myra Lipper
Martin Grabois
Laurel & Dennis Brown

Jerome Kosoy
Marilyn Waldman
Evelyn Roth
Jan & Rick Sander

FLORENCE & BEN BLUM LEADERSHIP FUND

To send Emanu El leadership to URJ Biennials and underwrite leadership programs and speakers

In Memory of
Terre Brook
Sara Astrich
Sylvia & Steven Brody
Robert Reichlin
Celia Weingarten & Webberman & Engelberg Families

FREDELL LACK EICHHORN CANTOR'S MUSIC FUND

To enhance musical programming

In Memory of
Michael Epstein
Gloria & Joe Pryzant

JULIA KAPLAN RELIGIOUS SCHOOL ENRICHMENT FUND

To enhance Helfman Religious School programs

In Memory of
Jim Rubenstein
Dee Dee & Bob Halpin

JULIUS NATHAN MUSIC FUND

To provide musical programs

In Memory of
Michael Epstein
Aliza & Jason Plotkin

RABBI ROY & LINDA WALTER ENRICHMENT FUND

To support spiritual and cultural enrichment

In Appreciation of
Rabbi Roy Walter
Barry, Hayley, Blake, & Mitchell Glauben

In Honor of
Rabbi Roy Walter
Bobbi & Leon Daily
The Anniversary of Rozanne & Howard Rubin
Shirley & Leonard Lebow
The Anniversary of Rona & L.A. Train

Claudia & Joel Selzer
The Birthday of Helen & Martin Mark
Joy & Harris Jacobs
The Birthday of Rona Train
Claudia & Joel Selzer

In Memory of
Bradley Borden
Sylvia & Marty Mintzer
Michael Epstein
Linda & Harris Miller

continued next page

Michelle Roth Glauben
Barry, Hayley, Blake, &
Mitchell Glauben
Linda Walter
Bobbi & Leon Daily

**RELIGIOUS SCHOOL
SCHOLARSHIP FUND**
*To provide Helfman
Religious School
scholarships*
In Appreciation of
Helfman Teachers & Staff
Kathryn & Jonathan Paine

**RICKY SCHNURR
CAMBERSHIP FUND**
*To provide Greene Family
Camp scholarships*
In Memory of
Bradley Borden
Gladys Schnurr

**RIVA BURSTEN CARING
CONGREGATION FUND**
*To support programs
that assist people in the
community*
In Honor of
**The Marriage of Stefi
Harris & Robert Tobor**
Susan & Ed Septimus

In Memory of
Jerome Kosoy
Rona Weiner

**RONALD BROCHSTEIN
EARLY CHILDHOOD FUND**
*To enhance preschool
education*
In Honor of
**The Birthday of Fredi
Franks**
Phyllis Turkel

In Memory of
Lisa Chernow
Phyllis Turkel
Joe B. Gerson
Marianne & Larry
Greenfield

**SARAH & ADOLPH
BLUMENFELD KLEI
KODESH SACRED OBJECTS
FUND**
*To purchase and maintain
Emanu El's sacred objects*
In Memory of
Adolph Blumenfeld
Norman L. Blumenfeld

**SHIRLEY BARISH
MEMORIAL ISRAEL
EXPERIENCE FUND**
*To send Helfman Religious
School students to Israel*
In Memory of
Marvin Barish
Anonymous
Martha Barvin
Elizabeth Greenfield
Krohn & Matt Krohn
Kathy & Garey Marks
The Milin Family
Elaine & Morris Rutchik
Linda & Richard Zoll

**SISTERHOOD FLOWER
FUND**
*To provide flowers in our
worship spaces*
In Honor of
**The Bar Mitzvah of
Noah Sonabend**
The Sonabend Family
**The Bat Mitzvah of Amelia
Rose Paine**
Kathryn & Jonathan Paine

In Memory of
**Margie & James C.
Baldwin, Esther & Harry
Paine, Geraldine & Milton
Popkin, Athol & Baxter
Taylor, & Alfred Barritt
Taylor**
Kathryn & Jonathan Paine

**Sophie & Jerome
Bormaster & Jeff
Donsky**
Janis & Peter Oxer,
Dr. Greg & Robby Rauch,
& Kelly Rauch
**Kaitlin Elizabeth Brynes,
Sarah & Abe Fink, Frances
& Arnold Roseman, Barry
Roseman, Cookie Senior,
& Roger Sofer & Nason
Feldman**
Barbara & Donald
Roseman, Courtney &
Jeremy Brynes, Caroline,
Emerson & Pearson,
Ashley & Gavin Roseman,
Sara, Brooke & Davis

**Carolyn & Bob Cooper,
Ruth & Sam Davidson,
Arlene & Bob Merson,
Jerry Waldman, & Minnie
Waldman**
Nicole & Kevin Cooper,
Rebekah, Caroline &
Shayna Cooper, Allison
& Todd Waldman, Jacob
& Emery Waldman, &
Marilyn Waldman
Michael Epstein
Bette & Richard Pesikoff
Bettie Braunstein Farfel
Linda Lesser & Family
Murray Getz
Philip Getz & Family
Sarah Rabinow Pesikoff
Bette & Richard Pesikoff
Marsha Tsuchida
Rose Marie & Ron
Wagman

SISTERHOOD FUND
*To provide for the
Sisterhood*
In Honor of
The Emanu El Sisterhood
Chris Kahn

**SOL & HELEN LAUFMAN,
BILL LAUFMAN COLLEGE
DINNER FUND**
*To provide Emanu
El college students
opportunities to
have dinner with the
congregation's rabbis*
A Donation
Molly Ann Kaplan

**STILLMAN-LACK
MEMORIAL LIBRARY
FUND**
*To maintain and enhance
the Stillman-Lack
Memorial Library*
In Memory of
Alma Sylvia Wadler
Diane Lewis

**SUSMAN FUND FOR
FAMILY PROGRAMMING**
*To support programs for
families*
In Honor of
**The Speedy Recovery of
Lila Rauch**
Rozanne & Howard Rubin

In Memory of
Morris Rauch
Lila Rauch
Richard Susman
Linda Rauch Susman

TEMPLE FUND
*To support the needs of the
temple and to fulfill the
mission of Congregation
Emanu El*
In Honor of
Our Holy Lunches
Kathy & Garey Marks
**The Anniversary of Pat &
Aaron Fradkin**
Carol & Michael Wilk
**The Anniversary of Sara &
Ari Kessler**
Madgelyn & Richard Pesin
**The Birthday of Barry
Goodfriend**
Shirley & Maury
Gurwitch

In Memory of
Elaine Altschuler
Schirley Schnoll
Marvin Barish
Kathy & Garey Marks
Terre Brook
Carol & Michael Wilk
Michael Epstein
Madeleine Appeal
Sylvia & Steven Brody
Margery Loeb
David Odle
Jennifer & Doug
Rosenzweig
Laurie Silver
Donna & Philip
Tenenbaum
Carol & Michael Wilk

Stan Gritz
Sylvia & Steven Brody
Jerold B. Katz
Carol & Larry Fradkin
Linda & Richard Zoll
Irv Kauffman
Linda Rubenstein
Arthur Kotlen
Holly S. Hunsicker
Jill & Herb Kalman
Lynne Lipsitz
Anne Schultz Lewis
Herman J. Schultz
Evelyn Roth
Kathy & Garey Marks

ADULT LEARNING

Congregation Emanu El is a compassionate congregation focused on caring for our community through all ages and stages. Take a look at our newest offerings.

Basic Judaism (in-person)

**Sunday mornings, October 9 – November 16,
9:00 a.m. – 10:30 a.m.**

Seeking to learn more about Judaism or refresh what you learned years ago?

Join us for the fall semester of this fabulous multi-session class. Taught by our clergy, the topics of Jewish history, Jewish denominations and Shabbat will be covered. No homework, tests or quizzes, just come and learn for the sake of learning. Class size is limited.

Pre-registration is required, please contact Shira Moses at shiram@emanuelhouston.org.

Adult Hebrew (in-person)

Sunday mornings, beginning October 9

9:00 a.m. – 10:30 a.m. – Beginning Adult Hebrew
10:30 a.m. – 12:00 p.m. – Intermediate Adult Hebrew

Two terrific yearlong adult Hebrew classes are about to begin. The beginning class will focus on learning the Hebrew aleph bet and help students acquire the skills to decode simple words and phrases.

The intermediate level class is for those who are familiar with the Hebrew letters and vowels and are ready to start stringing words together to increase prayer reading fluency.

A class fee of \$180 applies. Come try the first couple sessions for no cost to see if it is a good fit.

Pre-registration is required. Please contact Shira Moses at shiram@emanuelhouston.org to register.

Savvy Caregiver (in-person)

**Tuesdays, October 11 -
November 15,
2:00 p.m. - 4:00 p.m.**

Offered in collaboration with The Amazing Place, Savvy Caregiver is a six-week program for those caring for individuals with Alzheimer's and related dementias, covering disease progression, behavior management and caregiver self-care. The class is structured to enable sharing among participants.



Dr. Peggy Determeyer

Dr. Peggy Determeyer is the McGee Fellow and Director of HHCI CARES (Caregiving, Aging, Resilience, Education, and Spirituality). She received her PhD in healthcare ethics and policy from the University of Texas Medical Branch (Galveston), her MDiv from the Perkins School of Theology (Southern Methodist University), her MBA from the Wharton School (University of Pennsylvania), is a board-certified chaplain, and is a board-certified healthcare ethicist.

Please register online by visiting our web calendar at emanuelhouston.org or contact Amy Hartley at amyh@emanuelhouston.org.

Spiritual Eldering (in-person)

**Tuesdays, November 1, 8 & 15,
10:00 a.m. – 11:00 a.m.**

Our lifespans are longer than ever. And yet, too often, older adults are put (or put themselves) “out to pasture,” merely existing instead of truly living. Meanwhile, we’ve come to treat natural stages of decline and death as medical dilemmas to be dreaded and avoided. How shall we transform the above? How shall we consider losses of former status and identity, reframing our goals towards mindful living and spiritual eldering? How shall we effectively disseminate perennial wisdom into an ever-evolving society? And how shall we respect the natural lifecycle, using the latter stages of physical life to contemplate legacy and eternity?



Rabbi Seth Stander

Rabbi Seth Stander is Community Aging Specialist of HHCI CARES (Caregiving, Aging, Resilience, Education, and Spirituality). Seth connects community members with resources related to caregiving, aging in place, long-term care facility placement, advanced care planning, and more. Additionally, Seth facilitates caregiver/grief/ethical support for individuals/couples/families. Finally, Seth teaches HHCI CARES’ “Aging with Grace” series and periodic “Lunch and Learn” sessions. Seth attended the Hebrew Union College-Jewish Institute of Religion, where he was ordained in 1999. He has served as congregational rabbi, chaplain, and long-term care ombudsman.

Please register online by visiting our web calendar at emanuelhouston.org or contact Amy Hartley at amyh@emanuelhouston.org.

Burials & Bagels

Sunday, October 30,
10:00 a.m. (in-person)

Join us for an informal education session to learn about pre-planning for yourself and your loved ones over breakfast. Guests will have an opportunity to speak with three Jewish funeral homes about their futures and purchase plots from Emanu El Memorial Park.



This event is open to the public. **RSVPs are requested by October 24** online at emanuelhouston.org/burialsandbagels.

Honoring Veterans at Emanu El Memorial Park Cemetery

If you have a loved one laid to rest at Emanu El Memorial Park that served in any branch of the U.S. Armed Forces, Emanu El would like to honor them. Please email their full name and branch served in to christians@emanuelhouston.org.

ATTENTION SENIORS: Medicare Prescription Drug Plan (PDP)

Your current Prescription Drug Plan (PDP) sponsor should have provided you with an Annual Notice of Change about your current prescription drug plan for 2023. The notice describes changes in your plan, including changes to the premium, co-pay, and the drugs covered.

If you are satisfied with the changes and want to remain in that Drug Plan, you do not have to do anything to stay in that plan for 2023. However, you might be advised that your current plan will be discontinued or merged with another plan for 2023. If you are in doubt about whether your current plan is the best plan for you, you may want to review your options before making a decision.

Changes can be made to your Medicare Prescription Drug Coverage **from October 15 to December 7, 2022**. To change your Prescription Drug Plan, **you must sign up by December 7, 2022**. The change will be **effective January 1, 2023**.

If you wish to review your current Part D plan, the Emanu El Social Action Committee can provide a trained volunteer to assist you. For assistance, during the window **October 15 - December 7**, contact the person that helped you previously or call Cynthia Pleason at 713.855.9260 (leave your name, phone number and



Emanu El Votes

**It's Nonpartisan. It's Civic Engagement.
It's a Mitzvah.**

BE A VOTER! Make voting easier for yourself this **November 8**. All congregants are invited to participate in the EE Votes Expo, part of the offerings on Yom Kippur afternoon from 2:30 p.m. -3:20 p.m.!

You'll get answers to questions about mail-in voting, early voting, who's on the ballot, and how to make a voting plan. Representatives from the Harris County Elections Office are even bringing some of the new voting machines so that you can practice voting on them!

JOIN OUR TEAM! We need volunteers to make nonpartisan calls to congregants urging them to vote in November. Training is provided for all volunteers.

It will be a fun way to fulfill our Jewish value of civic engagement and meet new friends. To volunteer, email eevotes@emanuelhouston.org.

email address, and you will be contacted to schedule a convenient time to assist you).

When contacted by a volunteer, please have the following information available:

- MyMedicare username & password. If you do not have an account, you will need to create one. The volunteer can provide assistance to do so.
- Your new Medicare Card (Medicare number and the date enrolled in Part A & Part B)
- Drug list: name, dosage and frequency of each medication
- Name of current insurance plan, if any
- Name of preferred pharmacy
- Zip code

DO NOT WAIT until the last minute to call. There will be no in-person appointments this year. All assistance will be provided by email or phone.

If you want to sign up for a Medicare Part D (drug) plan for the first time, you will need to create a personal account at mymedicare.gov. Call Cynthia Pleason at 713.855.9260, and a volunteer will assist you with setting up your account.

Thank You to the community for supporting us over the last 20 years



HOUSTON JEWISH FUNERALS

Jewish-owned and operated since 2001



SCAN OUR QR CODE FOR A MESSAGE FROM OUR STAFF



WATCH NOW

Jewish Heritage... Jewish Traditions... Jewish-owned and operated
Contact us today at (713) 666-0257 | HoustonJewishFunerals.com

**YOUR VALUES. YOUR FAMILY.
MAY BOTH ENRICH YOUR LIFE
THROUGHOUT 5783.**

During this season of reflection, may the blessings of life and love be your guide into a New Year that's full of happiness, health and fulfillment.

At Waldman Funeral Care, we focus on all the details so you can focus on your family.

**L'SHANA TOVA FROM OUR
FAMILY TO YOURS.**



WALDMAN FUNERAL CARE

Extraordinary Service. Compassionate Care.



Syd Waldman
Funeral Director

713-875-4811 · Syd@WaldmanFuneralCare.com

www.WaldmanFuneralCare.com

Texas Funeral Establishment #4622



SOLD!

*May I help you sell
Your home?*

Call today to schedule an appointment.

Terry Cominsky

REALTOR-ASSOCIATE®
Circle of Excellence, Hall of Fame

713.443.1610

terry.cominsky@bjr.com



MEYERLAND | 5902 Hummingbird

Remodeled Modern Farmhouse designed home with an open floor plan and backyard oasis.

4 BEDROOMS | 3 BATHS
Offered at \$499,999

Martha
Turner

Sotheby's
INTERNATIONAL REALTY

ADVERTISE WITH US

Increase your reach to nearly
1700 families each month!

Contact David Lamden at
DavidL@emanuelhouston.org.



HOUSTON'S OLDEST JEWISH OWNED
HEADSTONE & MONUMENT COMPANY
BENCHES, BRONZE PLAQUES, CRYPT FACES & RESTORATION



EXCLUSIVELY JEWISH MEMORIALS
VISIT OUR 30,000 SQ. FT. MANUFACTURING FACILITY

ASK FOR SANDY GAITZ
OR BRITTANY BYLO

281-888-5522



RESPIRE CARE NOW AVAILABLE

ASSISTED CARE • INCLUSIVE PRICING

- Assistance with personal care, dressing & on-site beauty salon.
- 24-hour nursing care, visiting physicians, committed staff, & on-site rehabilitation
- Scheduled transportation, housekeeping & laundry
- Medication Management
- Spacious accommodations with kitchenette & personal call system
- Elegant dining room with fine kosher dining & luxurious common areas
- Media room, activity center, library & game rooms
- Heated aqua therapy pool, wellness center, beautiful courtyards & outdoor areas
- Internet, wifi & cable access

FACILITY ID #102491



MOVE-IN INCENTIVES
NOW AVAILABLE

The Medallion
a symbol of distinction in assisted living

Stephanie Barrocas

713.778.5777

sbarrocas@themedallion.org

6262 N. Braeswood Blvd.
Houston, TX 77074

THEMEDALLION.ORG





Congregation
Emanu El

1500 Sunset Boulevard
Houston, Texas 77005
T 713-529-5771 F 713-529-0703

EMANUELHOUSTON.ORG



This Bulletin is printed on recycled paper.



Congregation Emanu El

Oren J. Hayon, Senior Rabbi
Pamela B. Silk, Associate Rabbi
Joshua R.S. Fixler, Associate Rabbi
Roy A. Walter, Rabbi Emeritus
Rollin Simmons, Cantor
David Lamden, Executive Director
Anna Shabtay, Director of
 Congregational Advancement
Sarah Williams, Early Childhood Director
Stefani Carlson, Director of
 Congregational Learning

Stuart Gaylor, President
Adam Pollock, Senior Vice President
Alana Pulaski, Vice President
Matt Pasternak, Vice President
fredi Bleeker Franks, Vice President
Ben Miller, Vice President

Philip Tenenbaum, Treasurer
Dawn Blitz, Secretary
Jeri Amundsen, Honorary President
Andrew Gass, Brotherhood President
Carol Sue Zions, Sisterhood President

EMANUELHOUSTON.ORG

SAVE THE DATE:

Warehouse Shabbat
Friday, November 18,
Love Dance Houston
(2206 Edwards St.)
Doors open at 7:30 p.m.,
Service begins at 8:00 p.m.

Join Rabbi Fixler, Cantor Simmons and their live band for Warehouse Shabbat! This rockin' adults-only worship event has been designed to be a dynamic, lively and musical prayer experience to rejuvenate your heart and uplift your spirit. The November installment will be in the Sawyer Yards Art District in Washington Heights. Come enjoy local desserts and drinks during this memorable Shabbat experience!



LIKE US ON FACEBOOK

www.facebook.com/emanuelhouston