



Congregation Emanu El

# Bulletin

SEPTEMBER 8, 2022 | 9 ELUL 5782

VOLUME 76 NUMBER 12

## FROM RABBI HAYON



*I pray that this year will bring renewal and rejoicing to us all, and that all of us will experience the deeply satisfying sensation of feeling “found” – spiritually and communally – in the new year.*

A well-known story is told about the great Hasidic master, the Maggid of Mezritch. As the story goes, the rabbi was deep in concentration when his young son ran into his study, crying bitterly.

“What’s wrong, my son?” the great rabbi asked the boy.

“I was playing hide-and-seek with my friends,” the child explained between sobs. “I found a perfect hiding place, and I waited and waited for my friend to come find me. But it took an awfully long time, and so I gave up and came out of my hiding place. But my friend was nowhere to be seen! He must have given up. I was hiding but he never came to find me...”

As the boy wept, the Maggid took him into his arms and soon he, too began to cry.

“But why are you crying, father?” asked the child.

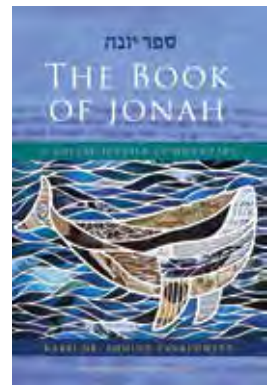
“My child,” he responded, “I am crying because I know that the Almighty feels the same pain. ‘I am hiding,’ God says, ‘but no one comes to seek Me.’”

At various times in our lives, all of us have experienced the sensation of feeling lost and alone, isolated and longing for connection. Sometimes the feeling of disconnection has been social or professional; other times, it has been a discomfiting truth in our spiritual lives. However, all of us are granted an annual chance

*continued on page 2*

## Exploring Elul Through *The Book of Jonah* Saturdays, September 3, 10, 17 & 24

Elul, the Hebrew month that precedes the High Holy Days, is traditionally a time of preparation and introspection. Join us during our Gems of Torah Study class for five weeks of learning focused on *The Book of Jonah*, the traditional haftarah text for Yom Kippur afternoon, using selections from *The Book of Jonah: A Social Justice Commentary* by Rabbi Dr. Shmuly Yanklowitz.



These thoughtful sessions will be held on Zoom, led by members of the clergy and our Director of Congregational Learning. We will explore traditional and modern texts and commentaries that will help us prepare our spirits and enrich our experience of the Days of Awe.

*continued on page 2*



## Watch for the launching of our new *Music at Emanu El* series

Throughout the year, we will be presenting musical events which will cover a wide variety of Jewish music, from Dan Nichols to students from the Shepherd School of Music and more.

Stay tuned for details!

## WORSHIP SERVICES

---

*Shabbat worship is the weekly spiritual recharge at Congregation Emanu El. We gather in a communal exhale, embracing the end of the week with prayer, song, meditation, study, rest, and renewal.*

### **Shabbat Ki Teitzei** **Friday, September 9**

6:00 p.m., Kabbalat Shabbat, Proler Chapel

### **Saturday, September 10**

10:30 a.m., Shabbat Morning Service, Proler Chapel  
10:30 a.m., Shabbat Morning Service, Barish Sanctuary  
Bar Mitzvah of **Noah Sonabend**, son of Michael & Rona Sonabend

### **Shabbat Ki Tavo** **Friday, September 16**

6:00 p.m., Kabbalat Shabbat, Proler Chapel

### **Saturday, September 17**

10:30a.m., Shabbat Morning Service Proler Chapel  
10:30 a.m., Shabbat Morning Service, Barish Sanctuary  
Bar Mitzvah of **William Burger**, son of Courtney & Charles Burger, and **Wyatt Greenberg**, son of Cory & Andrew Greenberg

### **Shabbat Nitzavim** **Friday, September 23**

6:00 p.m., Kabbalat Shabbat, Proler Chapel

### **Saturday, September 24**

10:30a.m., Shabbat Morning Service Proler Chapel

### **EREV ROSH HASHANAH** **Sunday, September 25**

5:00 p.m., Rosh HaShanah Unplugged, Barish Sanctuary

### **Monday, September 26**

9:00 a.m., Children's Service, Barish Sanctuary  
10:30 a.m. Rosh HaShanah Morning Service, Barish Sanctuary  
6:00 p.m., Tashlich Service, Bill Coats Bridge (Hermann Park)

### **Shabbat Vayeilech** **Friday, September 30**

6:00 p.m., Shabbat Shuvah, Barish Sanctuary

### **Saturday, October 1, 2022**

10:30a.m., Shabbat Morning Service Proler Chapel

### **OUTDOOR HIGH HOLY DAY FAMILY EXPERIENCE** **Sunday, October 2**

9:00 a.m., Nature Discovery Center (7112 Newcastle)  
5:00 p.m., Cemetery Service, Emanu El Memorial Park (8341 Bissonnet)

### **KOL NIDRE** **Tuesday, October 4**

6:00 p.m., Barish Sanctuary

### **YOM KIPPUR** **Wednesday, October 5**

9:00 a.m., Children's Service, Barish Sanctuary  
10:30 a.m., Morning Service, Barish Sanctuary  
12:30 p.m. – 3:20 p.m., Afternoon Experience  
3:30 p.m., Healing & Wholeness, Barish Sanctuary  
4:30 p.m. Yizkor, Barish Sanctuary  
5:30 p.m., N'ilah, Barish Sanctuary

\*Friday night services are available in person and online via our website, Facebook page, Roku and YouTube channels. Saturday services are in-person only in Proler Chapel.

---

### **FROM RABBI HAYON** *continued from page 1*

for reprieve: every year, the approach of the High Holy Days lend us a renewed opportunity to feel the joy and relief of reunion and reconnection.

The observance of the High Holy Days at temple this year will give us the chance to take an active role in easing some of the feelings of loneliness and isolation that we have experienced over the past few years. Our congregation and its worship spaces are, I hope, one place where all of us can feel at ease and at home, and this year I want to make a special request for you to plan to join us in person so that all of us can pray, sing, learn and reunite with each other.

Our congregational staff and clergy are assembling a lineup of services and programs that will be a moving and meaningful way for all of us to reconnect this year. The High Holy Day services of repentance and celebration will give us the chance to feel ourselves seen,

acknowledged, and appreciated. Just as the little boy in that Hasidic story longed to be, these holidays will provide us the experience of having, at last, been “found” – by the Emanu El community, by the texts and melodies of Jewish tradition, and by the presence of God, which perpetually seeks to discover us anew in an embrace of reunion.

If you've not already done so, I urge you to solidify your plans for the holidays soon. Look at your calendar and speak to your loved ones so you can confirm the dates and times when you'll come to temple to experience this year's stirring and uplifting services together. This year will be the perfect time to return to family traditions – or to create some new ones! – of togetherness and celebration.

I pray that this year will bring renewal and rejoicing to us all, and that all of us will experience the deeply satisfying sensation of feeling “found” – spiritually and communally – in the new year.

---

### **EXPLORING ELUL THROUGH THE BOOK OF JONAH**

Register for these learning opportunities online at [emanuelhouston.org/hhdworship](http://emanuelhouston.org/hhdworship) so that we can send you the article each week.

## LIFECYCLE EVENTS

### BIRTHS

**Cayden James Barr-Meyer**, son of Noa & Benjamin Barr-Meyer; grandson of Donald & Larry Barr-Meyer

**Lennon Tofsky**, daughter of Mindy & Kevin Tofsky; granddaughter of Elyse & Howard Schultz and Pam & Neil Tofsky

### DEATHS

**Bradley Borden**, son of Beverly Borden; stepson of Mildred Borden; brother of Valerie Burman (Darryl); husband of Cathy Borden; father of Ashley Solano (Elias), stepfather of Sarah Kronman (Michael) and Katelyn Shelley (Cody Myers); grandfather of Liam, Aaron, & Gabriella

**Lisa Chernow**, daughter of our member Charlotte Berkowitz; sister of Linda, Cynthia, Mathew, and Barbara

**Michael Epstein**, husband of Janice Poplack; father of Andrew Epstein and Tracy Pesikoff (Joshua); grandfather of Jonah and Lily

**Jerold Katz**, husband of Judith Katz; father of Evan Katz (Nicole), Lenny Katz (z"l), Lissy (Joshua) and Scott (Cindy, z"l); grandfather of Alexandra, August, Beatrice, Moses, Rachel, Rebecca, Roxana, and Samuel

**Arthur Kotlen**, father of Melanie & Les Schwartzberg, Michael Kotlen, and Risa & David Streusand; grandfather of Gail Cervantes, Caryn & Louis Schwartzberg, Lauren Kotlen & Joseph Kitch, Molly & Joel Rabinovitz, Jackie & Evan Streusand, Abby Streusand & Gabe Greenberg, and Jenna & Elan Kahalnik; great-grandfather of Graiden, Mia, Lila, William, Alex, Siena, Chiara, Isabel, Adra, Raziell, Rayna, Ezi, Asa, and Shai

**Minnette Robinson**, sister of Claire Richker, Mallory Robinson, Shirley Arsham (Sheldon), and Anita Stewart (George); mother of Howard Robinson (Beverly), Mindy Brown (Steve), and Russ Robinson (Leslie); grandmother of Daniel (Katherine), Adam (Johanna), Michael, Nash (Kathleen), and Alex (Alex); great-grandmother of Lennon, Oliver, Maxwell, Lincoln, Elleson, Margot, Lucy, and Isadora

**Louis Stoler**, brother of Jane Kadosh (Naftalii) and John Stoler (z"l); father of Elizabeth Bell (Christopher), Zachary Stoler (Dena), and Andrew Stoler (Nicole)

**Frank Yelin**, husband of Linda Yelin; father of Lewis (Teresa), Melanie (Eric), and Julie Beth; grandfather of Rachael, Daniel, Sean, and Callie

#### A Notice About Bereavement Communications

Bereavement notices for our temple family are distributed with the permission of the deceased's family, and the timing of these notices is dictated by the family's request. Of course, each family grieves in its own way, and we are grateful for our congregation's patience and understanding with different families' preferences about how their loss is publicized.



#### Find Us On YouTube!

Looking for a one-stop shop to catch the latest worship services, musical selections, videos from our schools and more?

Tons of new content has been created since the pandemic and has been posted to Emanu El's YouTube page, with dozens and dozens more from the archives also shared.

Find us on YouTube by searching "Emanu El Houston Video" and subscribe today!

## Our clergy want to know . . .

If you or a loved one is sick or hospitalized please let us know.

Contact the synagogue at 713.529.5771, so that our rabbis can reach out and visit and be a source of strength and support.

Visiting the sick and praying for those who are ill are important and meaningful mitzvot.

## UPCOMING PROGRAMS AT EMANU EL

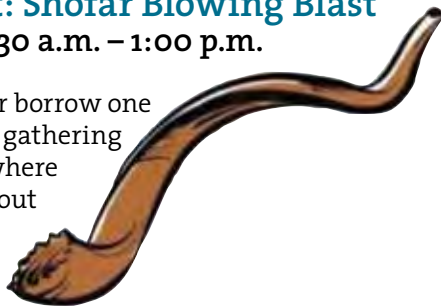
### Programming at Emanu El

When reviewing our program calendar, please note any registration requirements (RSVPs may be required), and whether the offering you wish to attend will be offered in-person, online, or in a hybrid format.

If you have a suggestion for a program or any questions about the details above, please contact Programming & Engagement Coordinator Amy Hartley at AmyH@emanuelhouston.org or 713.529.5771, ext. 216.

### Sound & Spirit: Shofar Blowing Blast September 18, 11:30 a.m. – 1:00 p.m.

Bring your Shofar (or borrow one of ours) for a special gathering led by Rabbi Fixler where you will learn all about shofar blowing and have a blast. Enjoy some snacks and stop by the gift shop for a new shofar and all your High Holy Day needs.



### Emanu El Votes

#### Emanu El Votes

Calling for Volunteers!! The goal of EE Votes is to provide information to make voting easier in November, and we need your help. Will you help make nonpartisan calls to congregants to encourage them to vote? Will you volunteer for the EE Votes Expo, our Yom Kippur afternoon event, where we'll answer questions about mail-in and early voting and learn how to use the new voting machines?

Email us at eevotes@emanuelhouston.org to sign up to volunteer. The EE Votes Task Force will provide training for all volunteers the week of **September 18**. Join us in this fun and fulfilling expression of our Jewish and civic values!

### Work of Our Hands (in-person) Thursday, September 8, 10:00 a.m.

The second Thursday of the month we host a group that enjoys companionship and knitting and/or crocheting shawls, bonnets, booties, lap blankets, etc. for patients in the Texas Medical Center. This mitzvah covers patients of

all ages at MD Anderson. Please check-in at the Rotunda. Questions? Contact Donnie Bundman at dbundman@gmail.com.

### Snack Packs for SEARCH Tuesday, September 27, 10:00 a.m.

SEARCH, Houston's Mobile Outreach team, distributes snack packs and sack lunches to individuals who are experiencing homelessness and living on the streets. With meetings on the fourth Tuesday of the month at 10:00 a.m. volunteers fill bags with an assortment of non-perishable snack items. Often, the packs provide the only food our neighbors have that day, and they are truly grateful. Please register in advance to Sandy Harris at sdharr@comcast.net.



### Kids' Meals (in-person) Tuesday, September 20, 9:30 a.m.

Join us as we prepare close to 1,000 sack lunches as Kids' Meals works to end hunger amongst children on the third Tuesday of the month. Open to participants of all ages, to get on the volunteer mailing list, please contact Donnie Bundman at dbundman@gmail.com.

Emanu El's involvement with Kids' Meals is made possible through the generosity of the Ed Wayne Hunger Fund.

### Moved? New Email Address? Want the *Bulletin* via Email?

As a reminder, please let us know when you have moved or changed email addresses so we can make sure our records are up to date! Please call the synagogue at 713.529.5771 or contact jessiec@emanuelhouston.org to submit an update.

Additionally, congregants have the option to receive the *Bulletin* via email instead of print. This helps save costs but also ensures an on-time delivery when there are issues with the US Postal Service. Contact stephanief@emanuelhouston.org if you would like to receive the *Bulletin* via email.



### Emanu El Welcomes Ashly Tamayo New Assistant Director at Becker School



**Ashly Tamayo**

We're thrilled to introduce Amy Tamayo as the new Assistant Director at Becker School.

Ashly has worked with children for over 20 years, beginning in her teens and early 20s. After having her first child while serving in the Navy, she pursued a career in child development. After having

her second child, her household became a Navy certified Child Development Home and was a licensed Family Care provider in San Diego, CA for six years.

Ashly began teaching in a classroom setting after her third child was born. During her time at San Diego Hebrew Day school between 2015-2020, she taught in the infant nursery, the toddler classroom, as an assistant

teacher for PreK-2, PreK-4, and as a lead teacher for two years in PK-3.

Through a grant from the Leichtag Foundation, Ashly was offered a fellowship at Coastal Roots Farm in Encinitas, CA, where she helped create and pilot the farm's educational programs from 2016-2022. She has loved sharing her passion for environmental education and Jewish values with students while enhancing learning experiences through music and art. She loves to play the guitar and use her love of music as a way to connect with children.

Ashly's husband recently retired from the Navy after 20 years of active duty service. Both he and Ashly are native Texans who have been living in San Diego since 2002 on military orders. Together they have children, ages 14, 16 and 18. The family loves outdoor adventures, such as river rafting, camping, hiking, road trips, and visiting national parks. They also have a beagle mix, a cat, and a bearded dragon.

#### MEMBERSHIP NEWS

### Welcome Our Newest Members

We are pleased to welcome the newest members to our congregational family. Please be sure to introduce yourself to our newcomers as they become a part of our community.

**Matt Breitel & Yaffa Fredrick**

**Samantha Krouse**

**Teri Mendelovitz, children Landon & Mikayla**

**Naomi & Arnold Revzin**

**Lindsay Stewart, children Brayden & Jordan**

**Mindy & Kevin Tofsky, daughter Lennon**

New members will be shared in the *Bulletin* regularly. Know someone interested in becoming a part of our community? New to town or looking to find a way to connect with Emanu El? Contact Anna Shabtay at [annas@emanuelhouston.org](mailto:annas@emanuelhouston.org) or 713.529.5771, ext. 261.



### Get Social With Us!

Did you know Congregation Emanu El is on Instagram? In addition to our active Facebook pages, be sure to follow us on Instagram to catch snap shots of happenings around the synagogue. From camel sightings to social action, a thriving youth group to clergy in action and more!

Find us on Instagram at [instagram.com/emanuelhouston](https://www.instagram.com/emanuelhouston) or if you are already a member, find us at [@emanuelhouston](https://www.instagram.com/@emanuelhouston). And yes, please feel free to "check-in" at Emanu El when you are here for events and happenings!

# SISTERHOOD NEWS & HAPPENINGS

September – October 2022

## SISTERHOOD BOOK REVIEW:

*An Observant Wife* by Naomi Ragan

THURSDAY, SEPTEMBER 8, 7:00 PM – 8:30 PM

Sisterhood hosts bi-monthly book reviews throughout the year that are open to the public.

To help us plan for our book reviews, we ask that you kindly RSVP by completing the online registration form found on our web calendar at [emanuelhouston.org](http://emanuelhouston.org) or by contacting the Sisterhood at [sishood@emanuelhouston.org](mailto:sishood@emanuelhouston.org) or 713.529.5771, ext. 233.

In this rich and compassionate novel, *An Observant Wife*, Naomi Ragan continues the love story between newly observant California-girl Leah and ultra-Orthodox Yaakov from *An Unorthodox Match*. From the joy of their wedding day, surrounded by supportive friends and family, Yaacov and Leah are soon plunged into their new lives together as Yaacov leaves his beloved Yeshiva to work in the city, and Leah confronts the often-agonizing restrictions imposed by religious laws governing even the most intimate moments of their married lives.

Adding to the difficulties is the hostility of some in the community who continue to view Leah as a dangerous interloper, questioning her sincerity and adherence to religious laws and spreading outrageous rumors.

Compromise and love lead Leah and Yaakov on their future path with happiness and contentment.

This event will be held online through Zoom. The Zoom information to access the program will be emailed to participants after registering.

## Learning About Emanu El's History

MONDAY, SEPTEMBER 19, 10:00 AM – 11:30 AM

Take a walk down memory lane and learn about the interesting history of Congregation Emanu El! Leading us on this fascinating journey will be Dr. Josh Furman, Associate Director of the Jewish Studies Program and Curator of the Houston Jewish History Archive at Rice University. This event will take place in the Fondren Library on the Rice University campus. Don't miss this unique opportunity to learn about Congregation Emanu El's history! Open to all Emanu El members, there is no cost for this program.

Please join us afterward for a “no host” lunch at Cleburne Cafeteria, 3606 Bissonnet St.

**TRANSPORTATION OPTIONS:** Walk to the Fondren Library from Emanu El's West Parking Lot via escort, Carpool from Emanu El to the Rice campus (parking cost is self-pay), or make your own arrangements. Register online at [emanuelhouston.org/calendar](http://emanuelhouston.org/calendar) or contact Sisterhood at 713.529.5771, ext. 233 or [sishood@emanuelhouston.org](mailto:sishood@emanuelhouston.org) by **Monday, September 12.**



## Welcome Home Baskets: Baskets of Care

Kick-Off: Sunday, October 3:30 p.m. - 5:30 p.m.

Calling all congregants! Join Sisterhood in supporting “Welcome Home Baskets,” an important social action project providing 40 baskets full of useful housewarming, culturally appropriate items for Houston's newly arrived immigrants, as well as families in need. VPs Susie Askanase and Amy Kapiloff are leading this congregation-wide effort and are working with Interfaith Ministries and Jewish Family Service on this initiative.

Emanu El members are urged to participate in this meaningful project by dropping off new or gently used items such as kitchen pots and pans, dishes, silverware, bath towels, cleaning products, basic tools (hammers and screwdrivers), children's books, and simple art for walls. In conjunction with “Sukkot on Sunset,” the kick-off and first drop-off day is October 9. Items can be brought to the west entrance of the synagogue at the rotunda and handed to volunteers.

Find out more at [emanuelhouston.org/welcomehomebaskets](http://emanuelhouston.org/welcomehomebaskets).



# Helfman Religious School

## Welcome Home to Helfman Religious School!

We are looking forward to a great year of learning and community building at Helfman Religious School! We will be continuing to build on the curricular changes we made last year, with a new set of quarterly Middot (Jewish Values) spotlights.

This fall, we will be focusing on inclusion, using the Jewish teaching that all people are created *B'tzelem Elohim*, in the image of God. We are partnering with the Congregation Emanu El Sacred Belonging Task Force to help shape the learning for our faculty and students.

We are also excited to have created a new inclusion specialist role on our faculty: Rachel Kossar, a longtime Helfman teacher and a Licensed School Counselor, will be moving from the classroom to serve as Counselor and Parent Education Specialist. Rachel will be working with our teachers to help ensure that Helfman is a place where all students are welcome and supported in their learning.

It is particularly exciting to be able to welcome parents and family members back into the building alongside our students. Our lively 9:00 a.m. T'filah services, led by our clergy and amazing song leading TAs, are once again open to family members.

The other part of Rachel's new position is facilitating a series of parent education and engagement programs, the first of which will be a session with comedian and inclusion activist Pam Schuller on **Sunday, October 9**.

We are also thrilled to be piloting a new series of religious school community Shabbat dinners. The first one, for the entire school, will be held on **Friday, September 2**. Subsequent months' dinners will provide the opportunity for families with children in the same grade levels to get to know one another better. Be on the lookout for more details on these and other exciting programs in the Helfman Herald e-letters.

Opening Day for Helfman Religious School is **Sunday, September 11** for grades PreK-7. Upper School classes for grades 8-12 begin after Yom Kippur on **Wednesday, October 12**. It's not too late to enroll! Please contact Elizabeth Townsend for more information at [elizabethth@emanuelhouston.org](mailto:elizabethth@emanuelhouston.org). We can't wait to see you!

## Enroll now for the Helfman Religious School 2022-2023 School Year

The first day of Helfman Religious School is **Sunday, September 11**. Register now! To enroll online, visit [emanuelhouston.org/helfman](http://emanuelhouston.org/helfman). Click "Enrollment," log into your account and fill out all required information. Payment of the \$125 per child, non-refundable, registration fee is necessary to confirm your enrollment. Payment must be made online. We will confirm enrollment(s) once the forms are complete and the registration fee is paid. The balance of the tuition will then be added to your account. Questions? Contact Elizabeth Townsend, [elizabethth@emanuelhouston.org](mailto:elizabethth@emanuelhouston.org).

## Consecration 2022

To celebrate the beginning of their religious education at Emanu El, our Consecration students and families will participate in a special ceremony on the morning of **Sunday, October 16**, during religious school hours. As part of this special occasion, each student will receive their own Torah.

## Consecration Family Education Program Sunday, September 18, 9:00 a.m.

Students and parents of all kindergarten and 1st – 3rd graders who are participating in Consecration are invited to make a special cover for their Torah. Students will take a group photo as well as record videos for the music portion of the service. Please have your child come dressed appropriately for the Consecration picture on **Sunday, September 18**: dress; skirt and blouse; or long pants (no jeans) and shirt (tie and jacket are optional). Stay tuned for more information!

To participate in Consecration, your child must be enrolled in Helfman Religious School or a Jewish day school. Contact Elizabeth Townsend with any questions at [elizabethth@emanuelhouston.org](mailto:elizabethth@emanuelhouston.org) or 713.535.6400.

## Calling All Emanu El Recent Alumni

Calling on all recent high school graduates! We know that you are in different places and have different needs this year, but we hope to continue to provide you with the same fun, heartwarming connection that our alumni have come to expect. To ensure that we know the best ways to reach you this fall, please reach out to Jessie Cassorla at [jessiec@emanuelhouston.org](mailto:jessiec@emanuelhouston.org) with your name, new address, and plans for the fall, or complete the form online at [emanuelhouston.org/form/eealumni2022](http://emanuelhouston.org/form/eealumni2022).

## HIGH HOLY DAY SCHEDULE

Below please find a snapshot of the High Holy Days featuring the schedule and pertinent information. Additional information including our guest pass policy for this year, parking, and more will arrive to our congregants in an upcoming mailout.

### SERVICE SCHEDULE

#### S'LICHOT

**Saturday, September 17, 9:00 p.m.**

S'lichot Movie Screening- More information available on our website at [emanuelhouston.org/hhdworship](http://emanuelhouston.org/hhdworship)

#### ROSH HASHANAH

**Sunday, September 25**

**High Holy Day Kickoff Reception, 4:00 p.m.**

**Rosh HaShanah Unplugged, 5:00 p.m.**

**Monday, September 26**

**Children's Service, 9:00 a.m.**

**Morning Service 10:30 a.m.**

**Tashlich**, immediately following morning service  
(Bill Coates Bridge)

#### SHABBAT SHUVAH

**Friday, September 30, 6:00 p.m.**

#### OUTDOOR HIGH HOLY DAY FAMILY EXPERIENCE

**Sunday, October 2, 9:00 a.m.**

Nature Discovery Center (7112 Newcastle St.)

#### CEMETERY SERVICE

**Sunday, October 2, 5:00 p.m.**

Emanu El Memorial Park (8431 Bissonnet St.)

#### KOL NIDRE

**Tuesday, October 4, 7:30 p.m.**

#### YOM KIPPUR

**Wednesday, October 5**

**Children's Service, 9:00 a.m.**

**Morning Service 10:30 a.m.**

**Afternoon Experience, 12:30 p.m.**

**Healing & Wholeness, 3:30 p.m.**

**Yizkor, 4:30 p.m.**

**N'ilah, 5:30 p.m.**

[Break the Fast immediately following N'ilah]

### HIGH HOLY DAY GENERAL INFORMATION

#### USHER IN THE HOLIDAYS!

Make a difference this season by becoming a High Holy Day Usher! We are looking forward to welcoming everyone in person for the High Holy Days this year and need your help greeting and assisting attendees to find appropriate seating. Other than attending a mandatory

training session in August, volunteers can commit to as little as one service during the holidays. Sign up here: [emanuelhouston.org/hhdworship](http://emanuelhouston.org/hhdworship). Questions? Contact David Lamden, Executive Director, at [DavidL@emanuelhouston.org](mailto:DavidL@emanuelhouston.org).

#### PASSES

High Holy Day passes are sent to all members in good standing, by mail. We accept passes from other congregations and also welcome military personnel, college students with ID, and out-of-town patients receiving treatment in the Texas Medical Center along with their families. Additionally, we offer reciprocity passes to members in good standing at other congregations.

If you know members of the community who have moved to Houston since last High Holy Days, we would like to have them to join us. Please ask them to contact Anna Shabtay at 713.529.5771, ext. 261 or [annas@emanuelhouston.org](mailto:annas@emanuelhouston.org) to arrange for newcomer passes.

We always encourage people who don't meet any of the criteria above to become part of this wonderful congregation where finances are never a barrier to membership. However, there are also guest pass options available for non-members. If you would like more information about these options, please contact David Lamden, Executive Director, at 713.529.5771, ext. 221.

#### RECIPROCITY

Are you heading out of town for the High Holy Days? If you are planning to worship at a URJ congregation in another community, you are eligible for reciprocity. A form to request reciprocity passes is available online through our website at [emanuelhouston.org/hhdworship](http://emanuelhouston.org/hhdworship). Please fill out this form to help your Emanu El team and those at your destination synagogue.

#### PARKING

Please remember to bring your passes! Only individuals with High Holy Days passes or handicap placards will be permitted entry to the Emanu El campus. All parking on Floors 1 and 2 of the Gaylor Parking Facility will be reserved for handicap-accessible use. The West Lot is reserved for Rabbi's Circle members with a required special pass. Because there is limited garage parking on Floors 3 and 4, we encourage you to park at the satellite locations. Buses will run continually from the satellite parking lots to and from Emanu El.

For Erev Rosh HaShanah and Kol Nidre, park at the Medical Clinic of Houston at 1707 Sunset Blvd. The parking garage entrance is located on Rice Blvd. On Rosh HaShanah and Yom Kippur Day, parking will be available at Rice University. Additional information

*continued next page*



---

about our off-site parking locations at Rice University for the daytime services will be shared prior to the start of High Holy Days.

### UBER TO EMANU EL FOR SERVICES

Emanu El is subsidizing Uber by \$5 per trip on Rosh HaShanah and Yom Kippur. These vouchers are valid for up to two hours prior and two hours following our services, and users must have one end of the route (pick-up or drop-off) located within .25 miles of the synagogue in order to be eligible.

Uber or ride-share service pick-up and drop-off must occur at the north entry to the Barish Sanctuary, as the Sunset Drive entrance will not be accessible. Please note that there will be separate Uber vouchers for the two days of Rosh HaShanah and the two days of Yom Kippur. Links to access the vouchers are available on our website at [emanuelhouston.org/hhdworship](http://emanuelhouston.org/hhdworship).

### CHILDCARE

Childcare for children ages 15 months to 8 years is available during both Rosh HaShanah and Yom Kippur morning services. Registration in advance MUST be received in order to prepare for the appropriate number of caregivers. The cost is \$10 per child, per service. A light snack will be provided; however, children with allergies are encouraged to bring their own snacks.

The registration deadline for Rosh HaShanah is **Wednesday, September 21**; the Yom Kippur registration deadline is **Friday, September 30**. Visit us online to register or contact Sarah Kronman at 713.529.5771 or [sarahk@emanuelhouston.org](mailto:sarahk@emanuelhouston.org).

### LIVE STREAMING

You can watch all High Holy Day services live-streamed four ways:

- **Emanu El website:** [emanuelhouston.org](http://emanuelhouston.org)
- **Facebook:** [facebook.com/emanuelhouston](https://facebook.com/emanuelhouston)
- **Roku device:** search for the Congregation Emanu El Houston channel

Archived videos of services and sermons will become available at the same digital locations.

### SERVICES ON TV

Our primary worship opportunities will be available on public access television through Houston Media Source.

HMS broadcasts on channel 17 on Comcast/Xfinity – the primary cable provider in Houston proper. The broadcasts are also available on AT&T U-Verse, Sudden Link and Phonoscope on channel 99. Please note that some high-

rises and multi-unit dwellings, and some areas may not be included in this availability due to various restrictions.

Please visit [emanuelhouston.org/hhdworship](http://emanuelhouston.org/hhdworship) to view our broadcast schedule.

### ACCESSIBILITY

For wheelchair or accessibility accommodation, submit a request form online at [emanuelhouston.org/hhdworship](http://emanuelhouston.org/hhdworship), or contact Christian Simmons at [christians@emanuelhouston.org](mailto:christians@emanuelhouston.org), and be sure to include the services you plan to attend. Preferred seating will be provided to those who give advance notice.

Those requesting special-needs seating may be granted a maximum of four additional seats for family members. These seats will be held for up to 15 minutes prior to the beginning of services.

The deadline for Rosh HaShanah is **Wednesday, September 21**, and Yom Kippur is **Friday, September 30**.

### HEARING LOOP

The Barish Sanctuary is equipped with an Induction Loop System which transmits audio signals directly to one's telecoil (T-coil)-equipped hearing aid.

### CLOSED CAPTIONING

Brotherhood provides closed captioning for our High Holy Day worship. The Brotherhood provides this service at all on-site Rosh HaShanah and Yom Kippur services. For those watching remotely, we will use the StreamText platform and will provide the appropriate URL in upcoming synagogue communications.

### HUNGER FUND

Congregation Emanu El's longstanding commitment to fighting hunger is made possible by contributions to the Edward Wayne Hunger Fund.

Donations to the Hunger Fund support emergency food needs in the Houston area, our partners in the community helping to fight hunger, and our ongoing projects with SEARCH Homeless Services and Kids' Meals.

Please return the envelope enclosed in your High Holy Day packet to the synagogue or drop it off at the Rotunda during the High Holy Days. Donations can also be made online at [emanuelhouston.org/giving](http://emanuelhouston.org/giving).



We appreciate the thoughtfulness of those who remember and honor their friends and loved ones through their generous contributions through August 14, 2022.

**ACCESS FOR ALL FUND**

*To ensure Emanu El is a welcoming, accessible, and inclusive community*

In Honor of

**The Anniversary of Rona & L.A. Train**

**The Birthday of Rona Train**

Pat & Aaron Fradkin

In Memory of

**Brad Borden**

Sara Speer Selber

**BARBARA & MARK**

**BROOKNER CAMPSHIP FUND**

*To provide scholarships to send Helfman Religious School students to Greene Family Camp*

In Memory of

**Stanford Alexander**

**Marvin Barish**

**Alan Fisherman**

**Lissa Rantor Streusand**

Jennifer & Jeffrey Ross

**BECKER EARLY**

**CHILDHOOD FUND**

*To provide and enhance the Becker School*

In Honor of

**The Birthday of Judge**

**Robert Schaffer**

Jack Schaffer and Family

**BECKER EARLY**

**CHILDHOOD**

**SCHOLARSHIP FUND**

*To provide Becker School scholarships*

In Honor of

**The Anniversary of**

**Rozanne & Howard**

**Rubin**

Rona & LA Train

In Memory of

**Max Greenfield**

Marianne & Larry Greenfield

**Jerome Kosoy**

Judy & Allan Lazor

**CECILE & EMANUEL**

**WULFE CONFIRMATION AWARD FUND**

*To provide a scholarship to send an outstanding Confirmation student to a Jewish Youth Group event*

In Memory of

**Ed Wulfe**

Cathy & Reggie Guettner Allison & Tem Nieto

**CERSONSKY CEMETERY**

**BEAUTIFICATION FUND**

*To maintain and enhance Emanu El Memorial Park*

In Memory of

**Brad Borden**

**David N. Miller**

Barbara Miller

**CHESTER MARCUS**

**CAMPSHIP FUND**

*To provide Greene Family Camp scholarships*

In Memory of

**Brad Borden**

Jeff & Karen Basen-Engquist

Dottie & Kurt Berk Serena Brooks & Lewis Wilkenfeld

Carol & Gary Brush Deborah & Gary Burman

Lorri Feiwell fredi & Paul Franks

Carol & Barry Goodfriend Cathy & Buster Irby

The Kasman Family Saranne & Livingston

Kosberg Trudy Kwartler

Linda Lesser

Stephanie Newell

Kathy & Stephen Parven

Paula & Irving

Pozmantier

Loralee Robbins

Marlene Rubin

Beverly Shapiro

Karen Skolnik

Cathy & Ronnie Winter

**CLERGY'S GOOD WORKS FUND**

*To provide Emanu El's clergy with funds to help individuals in need and to support organizations that benefit the community*

In Honor of

**Barbara & Raymond**

**Kalmans' new home**

Judy Myers

**The Anniversary of**

**Cheryl & Haran Levy**

Adele & Steve Croft

**The Anniversary of**

**Rozanne & Howard**

**Rubin**

Jennis Kauffman

In Memory of

**Frank Yelin**

Sonia & Peter Benjamin

Marsha & Marty Block

**EDWARD WAYNE HUNGER FUND**

*To feed the hungry of Houston*

In Honor of

**The Anniversary of**

**Rozanne & Howard**

**Rubin**

Carol & Barry Goodfriend

In Memory of

**Brad Borden**

Linda & Paul Lynn

**Minnie Duval**

Kathleen & Glen Duval

**ETERNAL FLAME FUND**

*To provide for the general needs of Emanu El and its facilities*

**A Donation**

Clarice Jacobson & Brian Rosenzweig

In Memory of

**Stanford Alexander**

Carol & Michael Wilk

**Jackie Cutler**

Laurel & Dennis Brown

**Minnie Duval**

Linda & Richard Stanley

**Martin Grabois**

Sylvia & Steven Brody

Laurel & Dennis Brown

Rachel Katz

**William Rosenthal**

Marianne & Larry

Greenfield

**Evelyn Roth**

Sue Sue & Don Aron

**FREDELL LACK EICHHORN CANTOR'S MUSIC FUND**

*To enhance musical programming*

In Memory of

**Brad Borden**

Ilene & Jack

Zimmermann

**JASON & DAVID MARCUS PLAYSPACE FUND**

*To maintain and enhance the playground*

In Honor of

**The Anniversary of**

**Rozanne & Howard**

**Rubin**

Rhonda & Seth Freedman

*continued next page*

In Memory of  
**Lois Rauch Frankel**  
**Bernice Friedlander**  
**& Nancy Friedlander**  
**Brochstein**  
**Helen Maltz**  
Ruby Sondock

**JULIA KAPLAN RELIGIOUS  
SCHOOL ENRICHMENT  
FUND**

*To enhance Helfman  
Religious School programs*  
In Honor of  
**The Anniversary of**  
**Rozanne & Howard**  
**Rubin**  
Celine Kaplan

**JULIUS & HARRIET ZINN  
FUND**

*To provide and enhance  
congregation programs*  
In Honor of  
**The Birthday of**  
**Cherill Dubinski**  
Sharon & Harvey Zinn

In Memory of  
**Minnette Robinson**  
Sharon & Harvey Zinn

**MILTON POPKIN  
LIFELONG ADULT JEWISH  
EDUCATION FUND**

*To promote an  
understanding of other  
religions and cultures*  
In Appreciation of  
**Beatrice & Josephine Paine**  
Linda Popkin &  
Stephen Paine

In Honor of  
**The B'nei Mitzvah of**  
**Amelia Paine**  
Linda Popkin &  
Stephen Paine

In Memory of  
**Geraldine "Mo-Mo"**  
**Popkin**  
**Frank Yelin**  
Linda Popkin &  
Stephen Paine

**RABBI ROY & LINDA  
WALTER ENRICHMENT  
FUND**

*To support spiritual and  
cultural enrichment*  
In Appreciation of  
**Dee Dee Dochen**  
Linda & Harris Miller

In Honor of  
**Rabbi Roy Walter**  
Leslie Goldman Tepper

**The Anniversary of**  
**Rozanne & Howard**  
**Rubin**

Terry Cweigenberg  
**The Birthday of**  
**Cherill Dubinski**  
Julie Stein

In Memory of  
**Brad Borden**  
Carol & Larry Fradkin  
Sylvia & Marty Mintzer

**Louis Stoler**  
Susan Levit Hammer  
& Family  
**Frank Yelin**

Lauren & Alan Gordon  
Sandy & Michael Wexler

**RELIGIOUS SCHOOL  
SCHOLARSHIP FUND**

*To provide Helfman  
Religious School  
scholarships*  
In Memory of  
**Joseph Loeser, Sr.**  
Marianne & Larry  
Greenfield

**RICKY SCHNURR  
CAMBERSHIP FUND**

*To provide Greene Family  
Camp scholarships*  
In Memory of  
**Brad Borden**  
Sydney Roggen  
**Geri Rich**  
Cynthia & David Senior

**RIVA BURSTEN CARING  
CONGREGATION FUND**

*To support programs  
that assist people in the  
community*  
In Memory of  
**Frank Yelin**  
Susan & Ed Septimus

**ROBERT I. KAHN GALLERY  
FUND**

*To maintain and enhance  
the Robert I. Kahn Gallery*  
In Memory of  
**Sylvia B. Kaufman**  
Pam Kaufman &  
Dennis Keierleber

**RONALD BROCHSTEIN  
EARLY CHILDHOOD FUND**

*To enhance preschool  
education*  
In Memory of  
**Minnie Duval**  
Marianne & Larry  
Greenfield

**ROZELLE & ROBERT I.  
KAHN LIFELONG ADULT  
JEWISH EDUCATION FUND**

*To present annual lectures  
by Reform scholars*  
In Honor of  
**The Birthday of**  
**fredi Franks**  
Susan & Syd Waldman

**SARAH & ADOLPH  
BLUMENFELD KLEI  
KODESH SACRED OBJECTS  
FUND**

*To purchase and maintain  
Emanu El's sacred objects*  
In Memory of  
**Adolph Blumenfeld**  
Norman L. Blumenfeld

**SHIRLEY & MARVIN  
BARISH TEACHER  
ENRICHMENT FUND**

*To provide training  
programs for Emanu El  
teachers*  
In Memory of  
**Marvin Barish**  
Sylvia & Steven Brody  
Don Grefe & Janice Pierce  
Celine Kaplan  
Barbara & Barry Lewis

**SHIRLEY BARISH  
MEMORIAL ISRAEL  
EXPERIENCE FUND**

*To send Helfman Religious  
School students to Israel*  
In Memory of  
**Marvin Barish**  
Susie & David Askanase  
Robin & Jordan Davis  
Melvin Dow  
Stewart A. Feldman  
Cheryl & Bill Freed,  
Tyler & Leslie Freed,  
Russell Freed, & Sol  
Freed  
Carol & Barry Goodfriend  
Marianne & Larry  
Greenfield  
Harriet Grossman  
Susan & Edward Kahn  
Elizabeth Greenfield  
Krohn & Matt Krohn  
Kathy & Garey Marks  
Melinda & Morris Mintz  
Susan & David Morris  
Diane Puschett  
Linda Susman  
Carol & Michael Wilk

**SISTERHOOD FLOWER FUND**

To provide flowers in our worship spaces

In Honor of

**The Anniversary of  
Rozanne & Howard  
Rubin**

Susan & Steven Perin

**The B'nei Mitzvah of  
Amelia Paine**

Kathryn & Jonathan  
Paine

In Memory of

**Margie & James C. Baldwin,  
Esther & Harry Paine,  
Geraldine & Milton  
Popkin, Athol & Baxter  
Taylor, & Alfred Barritt  
Taylor**

Kathryn & Jonathan  
Paine

**Bradley Keith Cyprus**

Shelly Cyprus

**Bettie Braunstein Farfel**

The Farfel Family

**Isador Max Poborsky**

Sheila & Jerald Kaplan

**Arlene & Ted Roggen**

Sydney Roggen

**SISTERHOOD FUND**

To provide for the Sisterhood

In Honor of

**Rabbi Roy Walter**

Bobby Frank

In Memory of

**Evelyn Roth**

Linda Susman

**SUSMAN FUND FOR  
FAMILY PROGRAMMING**

To support programs for families

In Honor of

**The Anniversary of  
Rozanne & Howard  
Rubin**

Jill & Barry Racusin

**The Birthday of**

**Judy Osborn**

Lila Rauch

Claudia & Joel Selzer

In Memory of

**Morris Rauch**

Lila Rauch

**TEMPLE FUND**

To support the needs of the temple and to fulfill the mission of Congregation Emanu El

In Honor of

**The Anniversary of**

**Rozanne & Howard Rubin**

Lindy & Sandy Kahn

Barry & Nanette

Putterman

Phyllis Selber

**The Birthday of  
Cherill Dubinski**

Ina Perlman

Carol & Michael Wilk

**The Birthday of Barry  
Goodfriend**

Shirley & Maury

Gurwitch

**The Birthday of Judy  
Osborn**

Phyllis Selber

Laurie & Alan Selzer

**The Birthday of**

**Joan Pleason**

Laurie & Alan Selzer

In Memory of

**Elaine Altschuler**

Schirley Schnoll

**Martin Grabois**

Phyllis Selber

**Jerold Katz**

Barbara & Donald

Roseman

**Irv Kauffman**

Linda Rubenstein

**Bernie Lauterbach**

**Marsha Tsuchida**

**Elaine Zuckerbrod**

Betsy Kusin

**Evelyn Roth**

Betsy Kusin

Linda & Ronald Turboff

**Louis Stoler**

Bobette & Lowell

Friedman

# NEW TRADITIONS

**SISTERHOOD JUDAICA SHOP**

CONGREGATION EMANU EL

## New Traditions - 60% off sale on all jewelry

Stock up on gifts or treat yourself. This sale won't last long! Be ready for High Holy Days with our huge selection of cards, shofars, talit, hostess gifts, kids books as well as the two volume set of *Mishkan HaNefesh*.

**Hours: Monday - Friday, 10:00 a.m. - 1:00 p.m.** or by appointment. To make an appointment, call 713.529.5771, ext. 234.







### Emanu El and the Astros

With over 80 congregants in attendance, the Houston Astros beat the Texas Rangers!

We had a blast at the Ball Park cheering our Home Team to victory.

We were so busy cheering that we couldn't even take a picture of everyone but here are some of those that were able to join us!

What a great night!







## Burials & Bagels

OCTOBER 30 | 10:00 AM

Join us for an informal education session to learn about pre-planning for yourself and your loved ones over breakfast. Guests will have an opportunity to speak with three Jewish funeral homes about their futures and purchase plots from Emanu El Memorial Park.

This event is open to the community.

Kindly RSVP online by October 24:

[EMANUELHOUSTON.ORG/BURIALSANDBAGELS](http://EMANUELHOUSTON.ORG/BURIALSANDBAGELS)



Congregation Emanu El

HOUSTON'S OLDEST JEWISH OWNED  
HEADSTONE & MONUMENT COMPANY  
BENCHES, BRONZE PLAQUES, CRYPT FACES & RESTORATION



EXCLUSIVELY JEWISH MEMORIALS  
VISIT OUR 30,000 SQ. FT. MANUFACTURING FACILITY

ASK FOR SANDY GAITZ  
OR BRITTANY BYLO

**281-888-5522**



MOVE-IN INCENTIVES  
NOW AVAILABLE

*The Medallion*  
a symbol of distinction in assisted living

Stephanie Barrocas

**713.778.5777**

[sbarrocas@themedallion.org](mailto:sbarrocas@themedallion.org)

6262 N. Braeswood Blvd.  
Houston, TX 77074

[THEMEDALLION.ORG](http://THEMEDALLION.ORG)



## RESPIRE CARE NOW AVAILABLE

ASSISTED CARE • INCLUSIVE PRICING

- Assistance with personal care, dressing & on-site beauty salon.
- 24-hour nursing care, visiting physicians, committed staff, & on-site rehabilitation
- Scheduled transportation, housekeeping & laundry
- Medication Management
- Spacious accommodations with kitchenette & personal call system
- Elegant dining room with fine kosher dining & luxurious common areas
- Media room, activity center, library & game rooms
- Heated aqua therapy pool, wellness center, beautiful courtyards & outdoor areas
- Internet, wifi & cable access

FACILITY ID #102491





*Thank You to the community for supporting us over the last 20 years*



**HOUSTON JEWISH FUNERALS**

Jewish-owned and operated since 2001



SCAN OUR QR CODE FOR A MESSAGE FROM OUR STAFF



WATCH NOW

*Jewish Heritage... Jewish Traditions... Jewish-owned and operated*  
**Contact us today at (713) 666-0257 | [HoustonJewishFunerals.com](http://HoustonJewishFunerals.com)**



**WALDMAN FUNERAL CARE**

Extraordinary Service. Compassionate Care.

**IN THE NEIGHBORHOOD AND  
PART OF THE COMMUNITY**

At your time of need, we provide compassionate support and expert guidance.

We're here for you.

We'll visit with you any time.

Your place or ours.

We focus on the details, so that you can focus on your family.



Syd Waldman  
Funeral Director

**WE SERVE OUR FAMILIES FROM OUR HEART.**  
Extraordinary Service. Compassionate Care.

**713-875-4811**

[www.WaldmanFuneralCare.com](http://www.WaldmanFuneralCare.com)

CHEVRA RADISHA OF HOUSTON APPROVED

Texas Funeral Establishment License #4622



Let me guide you **home.**

**Terry Cominsky**

REALTOR-ASSOCIATE®

713.558.3331

[Terry.Cominsky@SIR.com](mailto:Terry.Cominsky@SIR.com)

Martha  
Turner

**Sotheby's**

INTERNATIONAL REALTY



This Bulletin is printed on recycled paper.



Congregation Emanu El

**Oren J. Hayon**, Senior Rabbi  
**Pamela B. Silk**, Associate Rabbi  
**Joshua R.S. Fixler**, Associate Rabbi  
**Roy A. Walter**, Rabbi Emeritus  
**Rollin Simmons**, Cantor  
**David Lamden**, Executive Director  
**Anna Shabtay**, Director of  
Congregational Advancement  
**Sarah Williams**, Early Childhood Director  
**Stefani Carlson**, Director of  
Congregational Learning

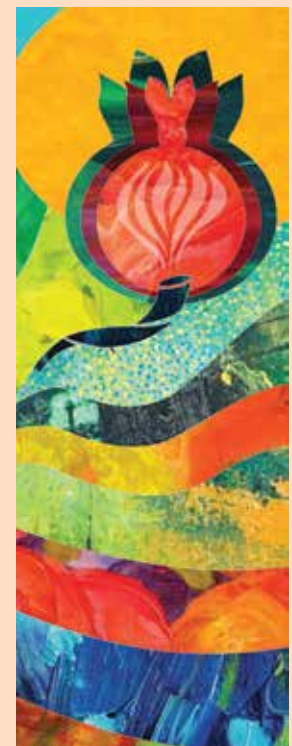
**Stuart Gaylor**, President  
**Adam Pollock**, Senior Vice President  
**Alana Pulaski**, Vice President  
**Matt Pasternak**, Vice President  
**fredi Bleeker Franks**, Vice President  
**Ben Miller**, Vice President

**Philip Tenenbaum**, Treasurer  
**Dawn Blitz**, Secretary  
**Jeri Amundsen**, Honorary President  
**Andrew Gass**, Brotherhood President  
**Carol Sue Zionts**, Sisterhood President

EMANUELHOUSTON.ORG

## High Holy Day Packets

If you haven't already received your High Holy Day packet in the mail, you will shortly! This packet will provide all the information you need, including your passes and a schedule of worship and family opportunities. It also contains helpful links for resources and activity registrations, and a Tashlich service program for you to enjoy a beautiful service at its new location.



LIKE US ON FACEBOOK

[www.facebook.com/emanuelhouston](http://www.facebook.com/emanuelhouston)