



Supplement of

Influence of irrigation on root zone storage capacity estimation

Fransje van Oorschot et al.

Correspondence to: Fransje van Oorschot (f.vanoorschot@tudelft.nl)

The copyright of individual parts of the supplement might differ from the article licence.

Supplement

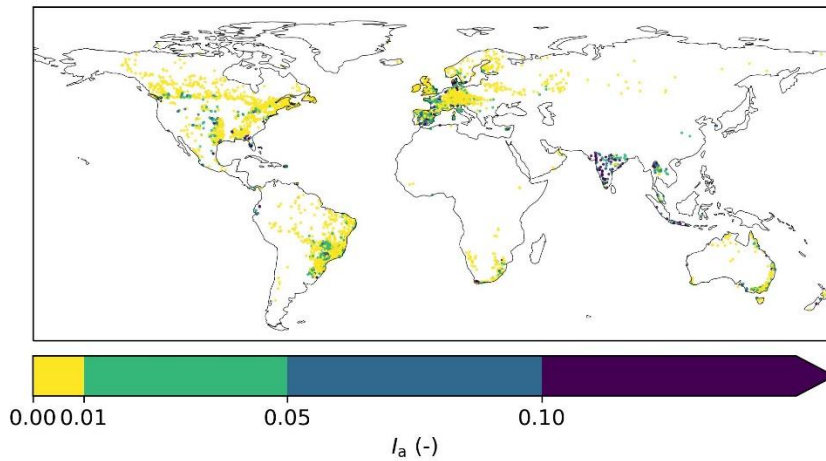


Figure S 1 Irrigated area fraction (I_a) stratified in the four groups used in Fig. 7 with dots representing the catchment outlets (Siebert et al., 2015)

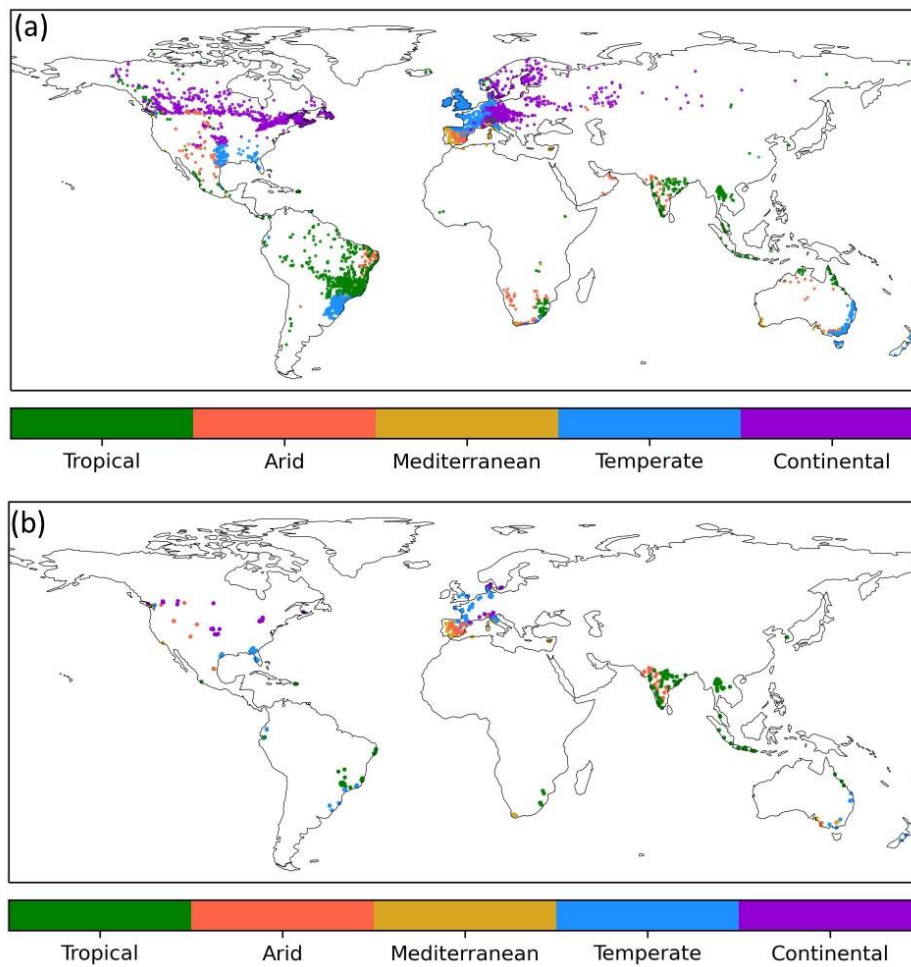


Figure S 2. Climate zone stratification used in Fig. 8b. (a) shows all study catchments and (b) catchments with $I_a > 0.05$. The following classification based on Köppen-Geiger is used: tropical (Af, Am, Aw), arid (BWh, BWk, BSh, BSk), temperate dry summer (Cfa, Cfb, Cfc), Mediterranean (Csa, CSb), and continental (Dfa, Dfb, Dfc, Dfd) (Beck et al., 2018).

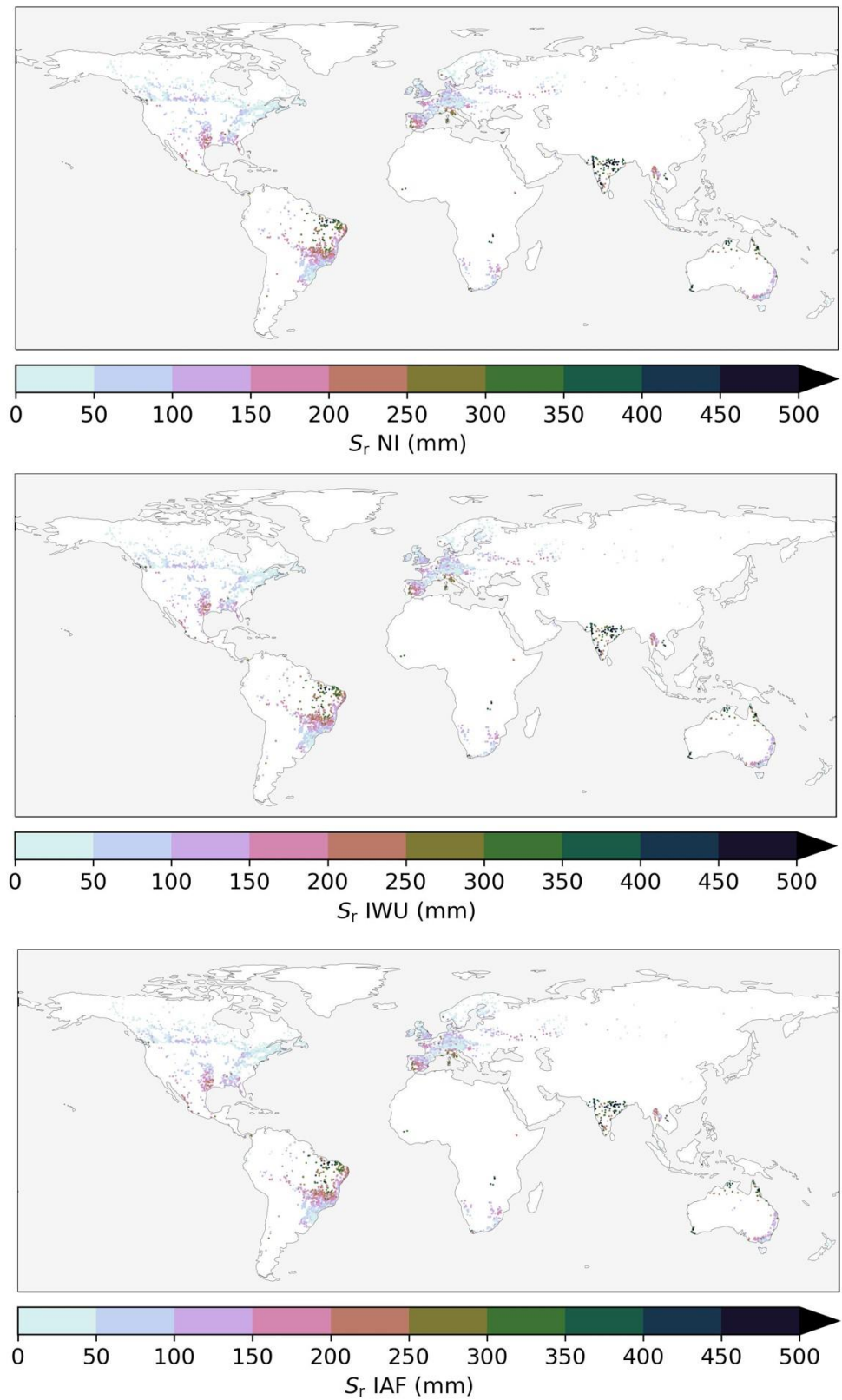


Figure S 3. Catchment S_r in mm for (a) the No Irrigation (NI) case, (b) the IWU irrigation case, and (c) the IAF irrigation case (Table 1), with dots representing catchment outlets.

$(IWU - IAF)/IAF$

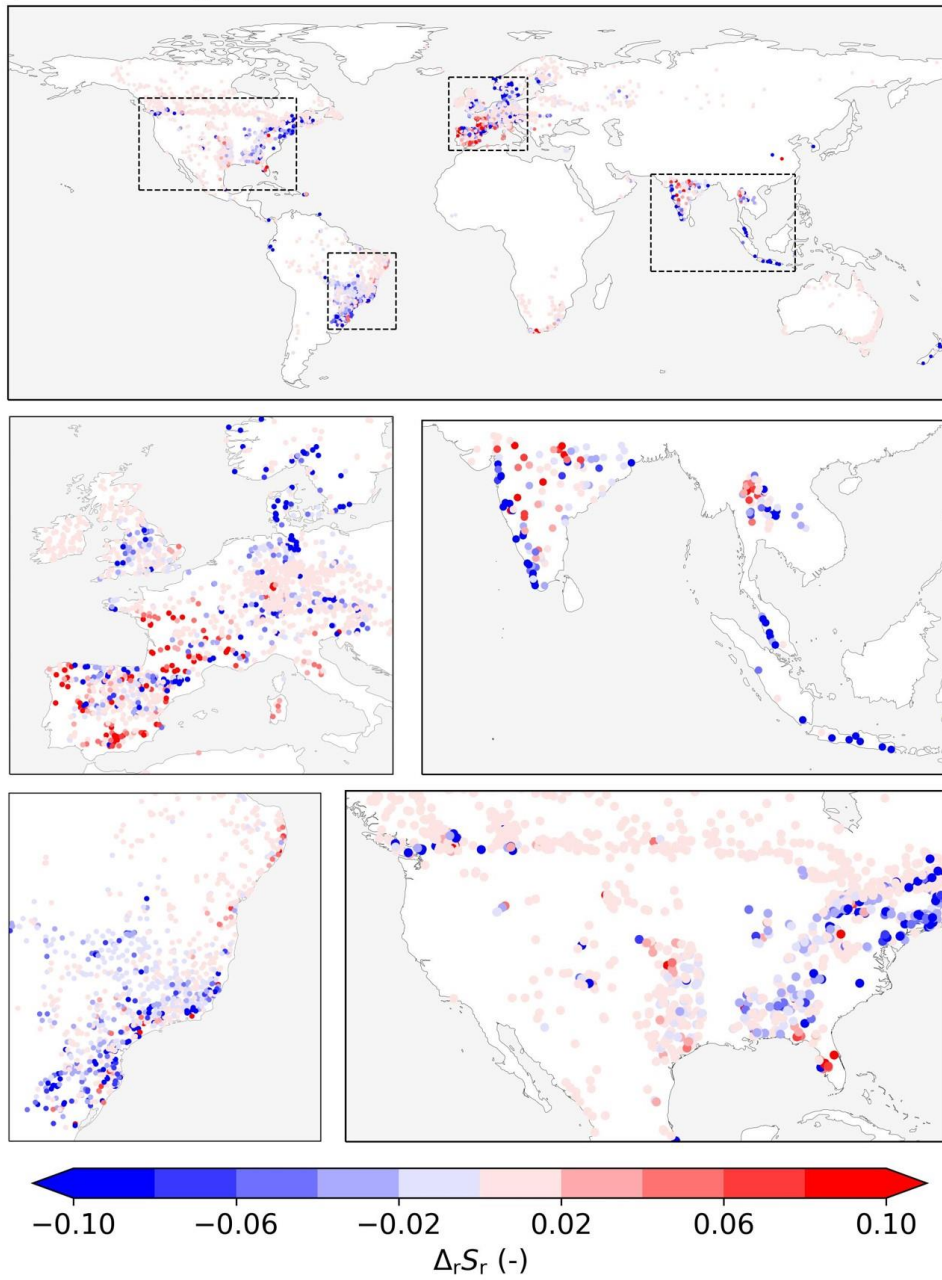


Figure S 4. Relative difference in S_r ($\Delta_r S_r$ (-)) for IWU compared to IAF ($(IWU-IAF)/IAF$). See Table 1 for details on the irrigation cases.