



**HAL**  
open science

# Energy management and power planning of a microgrid with a PV-based active generator for Smart Grid Applications

Frédéric Colas, Di Lu, Vladimir Lazarov, Bruno François, Hristiyan Kanchev

► **To cite this version:**

Frédéric Colas, Di Lu, Vladimir Lazarov, Bruno François, Hristiyan Kanchev. Energy management and power planning of a microgrid with a PV-based active generator for Smart Grid Applications. IEEE Transactions on Industrial Electronics, 2011, 58 (10), pp.P. 4583-4592. 10.1109/TIE.2011.2119451 . hal-00713617

**HAL Id: hal-00713617**

**<https://hal.science/hal-00713617>**

Submitted on 2 Jul 2012

**HAL** is a multi-disciplinary open access archive for the deposit and dissemination of scientific research documents, whether they are published or not. The documents may come from teaching and research institutions in France or abroad, or from public or private research centers.

L'archive ouverte pluridisciplinaire **HAL**, est destinée au dépôt et à la diffusion de documents scientifiques de niveau recherche, publiés ou non, émanant des établissements d'enseignement et de recherche français ou étrangers, des laboratoires publics ou privés.

# Energy management and power planning of a microgrid with a PV-based active generator for Smart Grid Applications

**Abstract**— The development of energy management tools for consumers and next generation PV installations, including storage units, provides flexibility to distribution system operators. In this paper the aggregation and implementation of this new energy management method for business customers in a microgrid power system is presented. The proposed energy management system is organized according to different functions and is implemented in two parts: a central energy management of the microgrid and a local power management at the customer side. The central and local management systems exchange data and orders through a communication network. The power planning is designed according to the prediction for PV power production and the load forecasting by taking into account the capabilities of dispatched customers. According to received grid power references, additional functions are also designed to manage locally the power flows between the various sources. Application to the case of a hybrid supercapacitor battery based PV active generator is presented.

**Index Terms**—Smart grids, sustainable energy, power planning, energy management, micro grid, renewable energy prediction, load forecasting

## I. INTRODUCTION

The need to reduce pollutant gas emissions and the liberalization of the electricity market have led to a large scale development of distributed renewable energy generators in electrical grids [1]. Nowadays renewable energy generators, such as photovoltaic or wind power generators, are used to reduce fuel consumption and greenhouse gas emissions. However, the output power fluctuation of renewable energies may cause excess variations of the grid's voltage and frequency. In recent years, storage systems have been used to design active generators, which are able to provide an energy reserve with a less fluctuating output power [2-4]. As example, fig. 1 shows a home application with PV panels and a demand response capability via some controllable loads and storage units. During the day this home application may be a power producer or a consumer – also known as a “prosumer”.

A few years ago, Energy boxes (E-boxes) were developed in order to follow energy consumption [5].

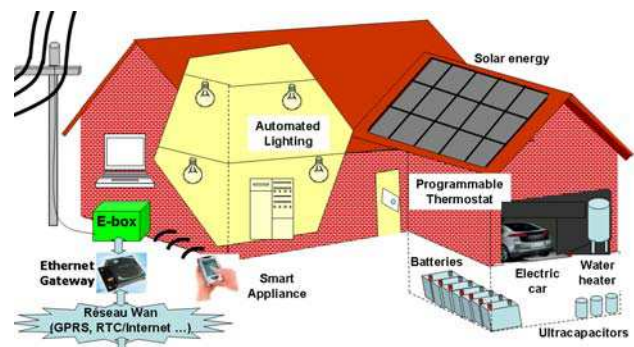


Fig.1. Prosumer with load demand response and production capabilities.

They have been upgraded to increase consumer satisfaction with the option for automatic control of some loads. Customer-enabled management provides opportunities for consumption adaptation to time pricing and new grid services for higher quality power supply (Yellow Strom's meter, Linky meter, ...). In this paper we consider advanced E-boxes with on-board intelligence, which receive signals from the grid operator and are able to reduce home demand or increase power production as in the NEDO project of Ohta City [6].

Considerable research activity is focused on the integration of large amounts of Distributed Energy Resources (DER) in the electrical system. The attention is now oriented toward the use of DER for improving grid operation by contributing to ancillary services, increasing the energy reserve and reducing CO<sub>2</sub> emissions. In practice, new facilities are expected to reduce congestion, to minimize the production costs and to maintain the frequency and voltage. These developments require a fundamental redesign of the grid control. Here an aggregated architecture of an urban power system is considered as means to facilitate the integration of distributed prosumers both in the electrical system and in the market.

In this study home applications are coordinated with conventional production units by a central Energy Management System (EMS) to form a microgrid (fig. 2). The global objective consists in matching the total power production to demand in an optimal way [7,8]. This concept is pertinent in the framework of smart grids through the combined use of an additional communication network within an intelligent energy management system and local controllers [9,10]. This scheme is a step between current grid requirements and future needs.

This paper tackles the problem of the optimal planning of smart grids in the presence of prosumers. A coordinated management of energy resources is proposed through a communication network. An E-box exchanges data with the central EMS and receives references. In section II, the paper recalls the organization of the embedded local energy management of a prosumer. Section III is focused on the general scheme of the microgrid EMS. Finally, our planning and long-term energy management is detailed in the fourth section. Section V describes the local controller in charge of the coordination of home energy resources whose function is to satisfy grid power references. Experimental results are presented in the last section.

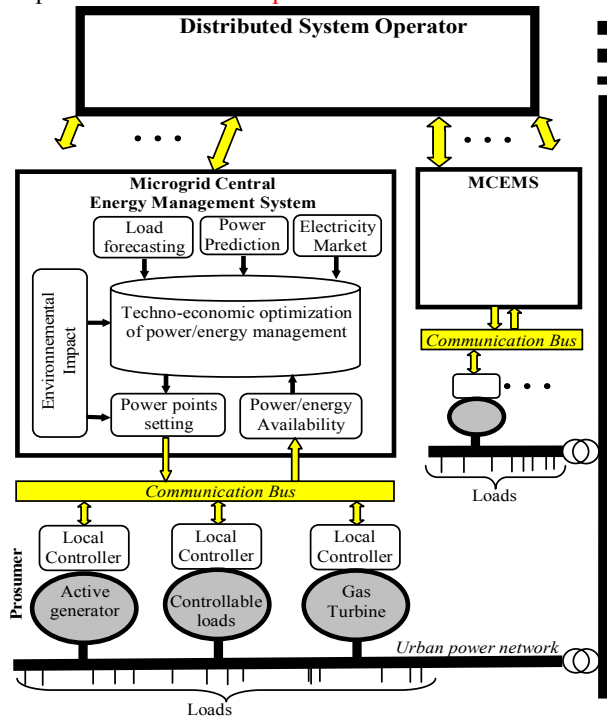


Fig.2. Framework of the central energy management system.

## II. LOCAL ENERGY MANAGEMENT

To facilitate the presentation of theoretical developments a single prosumer and a micro gas turbine are considered in this microgrid (fig. 3). The E-box integrates three functions: a load manager, an advanced meter and a local energy management.

The load manager enables customers to automatically pre-program appliances to turn on when prices are lower or to create energy consumption habits, such as: uninterrupted supply of critical loads, time programmable use, etc. Moreover it can reduce a part of the home power demand when the grid is under stress by disconnecting offered controllable loads [11]. An advanced meter feeds the local energy management system as well as the load manager. Moreover the utility is able to ping the meter.

Photovoltaic panels are associated with a storage system, which includes a set of batteries as a long-term storage device [12, 13] and a set of ultracapacitors as a fast dynamic power regulator [14, 15] (fig. 1). These are coupled via a DC bus by choppers and are connected to the

microgrid by a three-phase inverter [16]. The interesting aspect of this hybrid generator is that it is able to deliver a prescribed power level ( $P_{ag\_ref}$ ) like a conventional generator (for example, a gas micro turbine). The local energy management thus allows the use of PV energy according to the grid operator requirement also at times when the sun is not shining. In this case batteries are tapped to provide the required power. To highlight the difference to conventional PV panels, this concept is called an active generator. Excess PV energy is stored in batteries for use when needed and the local real time power control is performed with ultracapacitors.

The E-box gives a remote control of facility to the grid operators to allow faster adjustments to conditions and to give more flexibility to re-route power in a certain offered margin.

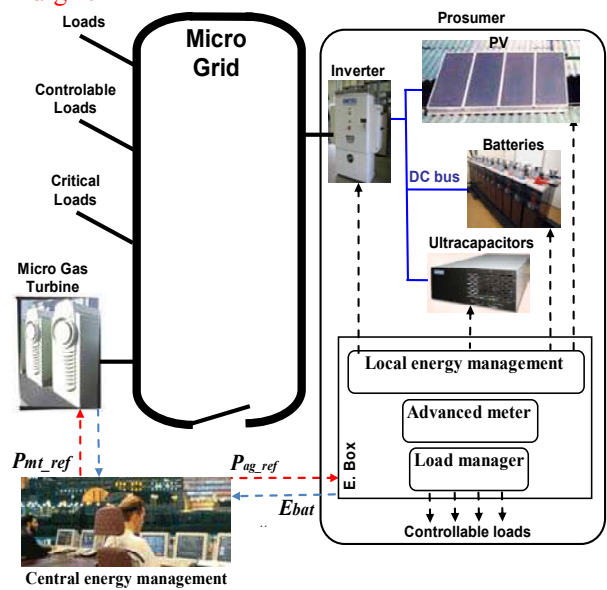


Fig.3. Microgrid integration of a prosumer and a micro gas turbine.

## III. MICROGRID ENERGY MANAGEMENT

From a general point of view the task of the central EMS is to manage the power and the energy between sources and loads into the microgrid. The real and reactive power production must then be shared among the Distributed Energy Resource (DER) units (here a single prosumer) and the gas microturbine. So the central energy management system must assign real and reactive power references and also other appropriate control signals to the DER units, conventional production units and controllable loads. Microgrid management is analyzed through various functions that are classified in a timing scale (fig. 4).

Long-term energy management includes:

- the hourly "RES production forecast" including the time dependency of the prime source, environmental impacts and cost of generation,
- the management of controllable loads that may be disconnected/shed according to the supervision requirement,
- the provision of an appropriate level of power reserve capacity according to the electricity market and the load

demand forecast,

- the maintenance intervals.

**Short-term** power balancing includes:

- the RMS voltage regulation and primary frequency control,
- the real time power dispatching among internal sources of a DER (PV generator, batteries, ultracapacitors for our example in fig. 1).

According to the different management objectives, the proposed energy supervision system is implemented in two locations: a central EMS of the whole micro grid for the long-term energy management, and a local energy management system in the E-box for the **short-term** power balancing.

A communication between these two management units is set up because the data acquisition and information about the states of each resource (such as the energy capacity and the real-time produced power) are very important for the central EMS of the microgrid. The control orders from the microgrid central energy management are also sent to the local supervisor (fig. 2).

In order to integrate active generators into the electrical system, the central energy management has to be upgraded. Several functions in the central EMS have to be modified or created as power prediction of the renewable energy, load forecasting, energy storage reserve, peak shaving, maximized use of renewable energy source, reduction of CO<sub>2</sub> emissions and new power planning (fig. 4). In the next section a long-term energy management is proposed.

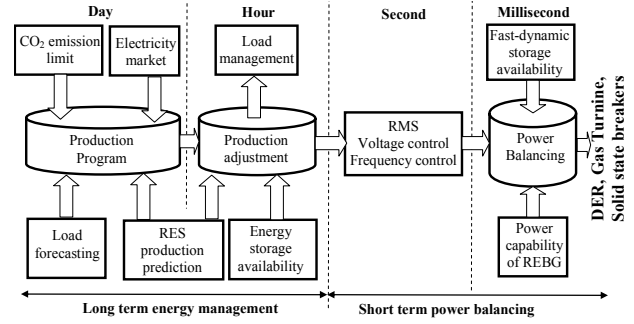


Fig.4. Timing classification of control functions for EMS.

#### IV. LONG-TERM ENERGY MANAGEMENT

##### A. PV power prediction and load forecasting

In the case study, the naturally poor predictability of the level of solar energy is a weakness for the purpose of its use in an electric system. Photovoltaic panels provide electrical power only during the day with a power peak around the midday. Meanwhile huge production variations may occur.

According to the weather forecasting and the historic database of PV power, a 24-hour-ahead approximated PV power prediction profile ( $\tilde{P}_{PV\_24h}$ ) can be obtained each half an hour (fig. 5). The load forecasting is also very important for the energy management.

Based on historic electrical power production demands, the behavior of the loads can be forecast and estimated. Several factors influence the load in the electrical network: the weather situation (temperature, cloud coverage, etc.), economic activity (huge modifications of load forecasting are necessary during the holiday periods), standard working hours, etc.

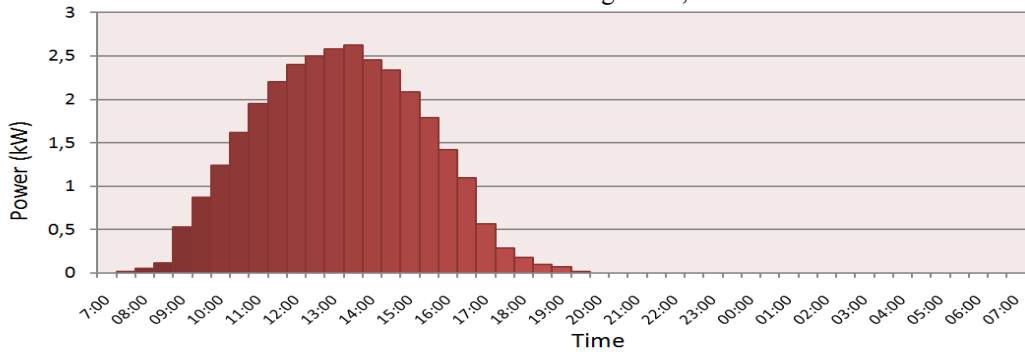


Fig. 5. 24-hour-ahead PV power prediction ( $\tilde{P}_{PV\_24h}$ ).

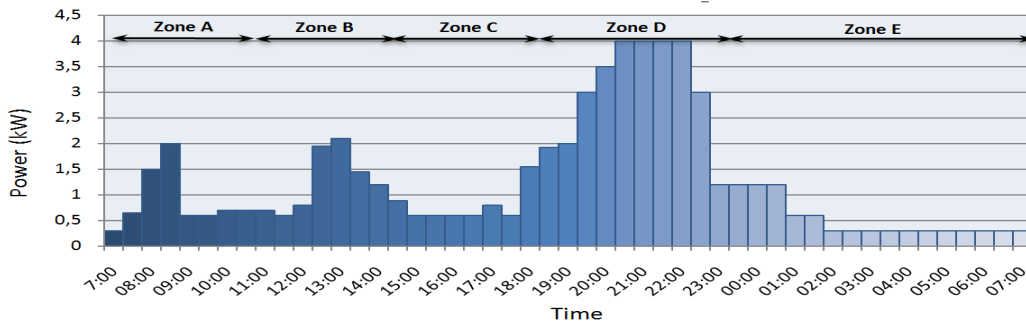


Fig. 6. 24-hour-ahead load forecasting ( $\tilde{P}_{Load\_24h}$ ).

“Classic” methods of load forecasting are based on meteorological information and historic consumption data [17]. A 24-hour-ahead load forecasting profile ( $\tilde{P}_{Load\_24h}$ ) is given in fig. 6 with data recorded each half hour.

We have set out the pattern of daily home power consumption in time-related categories: the morning peak (fig.6, zone A), the lunch peak (fig.6, zone B), the sag in the afternoon (fig.6, zone C), the evening peak (fig.6, zone D) and the night sag (fig.6, zone E).

### B. Energy estimation

For the energy estimation, the initial time point is considered as the start of the day ( $t_0$ ) and the day’s duration is named ( $\Delta t$ ) (fig. 7). Both parameters depend on the season and the weather conditions.

The scheduled energy of the PV production during each 1/2h interval can be calculated with data from the PV power prediction as:

$$\tilde{E}_{PV\_1/2h} = \int_{t_0+nTe}^{t_0+(n+1)Te} \tilde{P}_{PV\_24h}(t)dt = Te \cdot \tilde{P}_{PV\_24h}(t_0 + nTe) \quad (1)$$

with  $Te=30\text{min}$  and  $n \in \{0,1,\dots,47\}$ .

In order to plan the production program, the energy, which is demanded by the load is also estimated during the same interval:

$$\tilde{E}_{Load\_1/2h} = \int_{t_0+nTe}^{t_0+(n+1)Te} \tilde{P}_{Load\_24h}(t)dt = Te \cdot \tilde{P}_{Load\_24h}(t_0 + nTe) \quad (2)$$

The rated power of the micro gas turbine ( $P_{MGT\_max}$ ) is 33kW. In order to minimize energy losses and air pollution at each start of the gas turbine, the gas turbine should always work. Therefore, in the case of low power demand, the turbine is forced to work with a low power level ( $P_{MGT\_min}$ ); corresponding to the minimum energy:

$$\tilde{E}_{MGT\_1/2h\_min} = \int_0^{Te} P_{MGT\_min} dt = Te \cdot P_{MGT\_min} \quad (3)$$

Because of the rated power of the batteries ( $P_{bat\_max}$ ), the exchanged energy during 1/2h with the batteries is limited as:

$$\tilde{E}_{bat\_1/2h\_max} = \int_0^{Te} P_{bat\_max} dt = Te \cdot P_{bat\_max} \quad (4)$$

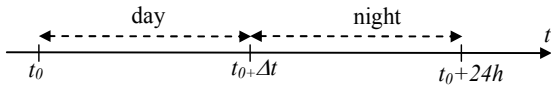


Fig. 7 Time axis for the PV power application

### C. Setting of half-hour power references

In this studied case two power sources are considered: a PV based active generator (at the prosumer home) and a micro gas turbine. Because of the renewable energy benefits (less gas emission and low operating cost), the PV based active generator is considered the prior source, and the micro gas turbine a back-up source for the missing energy. The objective is to set one charging/discharging cycle for batteries every day. The depth of discharge is maintained between 0% and 70% during normal operation to increase the battery lifetime. Here the storage battery capacity is 10 kWh. Moreover the rated

battery power ( $P_{bat\_max}$ ) is also considered.

According to daily predictions of the available power and energy from the PV ( $\tilde{P}_{PV\_24h}, \tilde{E}_{PV\_1/2h}$ ) and the required power and energy of the loads ( $\tilde{P}_{Load\_24h}, \tilde{E}_{Load\_1/2h}$ ), a power production planning for the prosumer ( $P_{AG\_ref0}$ ) and for the micro turbine ( $P_{MGT\_ref0}$ ) must be determined. The central energy management system refreshes the power references each 30 minutes. As no power is available from PV panels during the night, power references are calculated separately for the night and for the day.

In the day ( $t_0 < t < t_0 + \Delta t$ ), and for each 1/2h period, two cases are considered.

**Case 1:** If the available PV energy added with the minimum gas turbine energy is less than the demanded load energy ( $\tilde{E}_{PV\_1/2h} + \tilde{E}_{MGT\_1/2h\_min} < \tilde{E}_{load\_1/2h}$ ), the PV panels can work with a Maximum Power Point Tracking (MPPT) algorithm and all PV power is injected in the grid. The micro gas turbine has to generate the missing power:

$$P_{AG\_ref0} = \tilde{P}_{PV\_24h} \quad (5)$$

$$P_{MGT\_ref0} = \tilde{P}_{Load\_24h} - P_{AG\_ref0} \quad (6)$$

**Case 2:** Otherwise, the available PV energy added to the minimum gas turbine energy is more than the demanded load energy. Priority is then given to the renewable energy for the electrical production so that the micro gas turbine works with minimum power and the active generator power is limited to the missing power:

$$P_{AG\_ref0} = \tilde{P}_{Load\_24h} - P_{MGT\_min} \quad (7)$$

$$P_{MGT\_ref0} = P_{MGT\_min} \quad (8)$$

The excess PV energy will be managed by the local controller (paragraph V).

The energy management during the night ( $t_0 + \Delta t < t < t_0 + 24h$ ) depends on the available energy from batteries in homes. This energy can be estimated or communicated by the E-box to the central EMS. In the night two cases are also distinguished. For both cases batteries have to be discharged in order to be ready for charging the next day at  $t_0$ . According to the stored energy ( $\tilde{E}_{bat}(t_0 + nTe)$ ) and the rated energy ( $\tilde{E}_{bat\_1/2h\_max}$ ), the available energy of batteries during the next 1/2h is obtained:

$$\tilde{E}_{bat\_1/2h\_rest}(t) = \min[\tilde{E}_{bat\_1/2h\_max}, \tilde{E}_{bat}(t_0 + nTe)] \quad (9)$$

**Case 1:** If the available stored battery energy, added to the minimum gas turbine energy is more than the demanded energy from loads ( $\tilde{E}_{bat\_1/2h\_rest} + \tilde{E}_{MGT\_1/2h\_min} > \tilde{E}_{load\_1/2h}$ ), priority is given to the active generator for the electrical production since it has enough previously stored energy from PV panels. The gas turbine will work with minimum power:

$$P_{AG\_ref0} = \tilde{P}_{Load\_24h} - P_{MGT\_min} \quad (10)$$

$$P_{MGT\_ref0} = P_{MGT\_min} \quad (11)$$

**Case 2: Otherwise**, the stored battery energy added with the minimum gas turbine energy is less than the demanded energy from the loads. Then the power reference of the active generator is calculated in order to discharge batteries and the gas turbine must generate the missing power:

$$P_{AG\_ref0} = \frac{\tilde{E}_{bat\_1/2h\_rest}}{Te}, \quad (12)$$

$$P_{MGT\_ref0} = \tilde{P}_{Load\_24h} - P_{AG\_ref0}. \quad (13)$$

#### D. Implementation and obtained results

In order to illustrate the theoretical results, the power planning (24h-ahead) of the load forecasting (fig. 6) is considered, as well as the estimated PV power (fig. 5) with  $t_0 = 7h00$  and  $\Delta t = 12h30$ . Estimations of the required energy for the loads ( $\tilde{E}_{Load\_day}$ ) and the available energy from the PV panels ( $\tilde{E}_{PV\_day}$ ) during the day ( $t_0 < t < t_0 + \Delta t$ ) show that too much renewable energy is available (fig. 8).

As the gas microturbine must produce the minimum energy during the day, the surplus energy is estimated as:

$$\Delta\tilde{E} = \tilde{E}_{PV\_day} - \tilde{E}_{Load\_day} + \tilde{E}_{MGT\_day\_min} < E_{bat\_max}. \quad (14)$$

$$\tilde{E}_{MGT\_day\_min} = \int_{t_0}^{t_0+24h} P_{MGT\_min} dt \quad (15)$$

This energy can be stored in batteries. The required energy from the gas microturbine for night operation is then deduced (fig. 9):

$$\tilde{E}_{MGT\_night} = \tilde{E}_{Load\_night} - \tilde{E}_{bat\_night}. \quad (16)$$

With  $\tilde{E}_{bat\_night} = \Delta\tilde{E}$ .

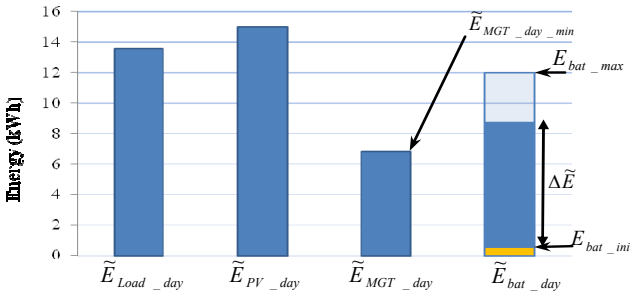


Fig. 8. Energy analysis for the day.

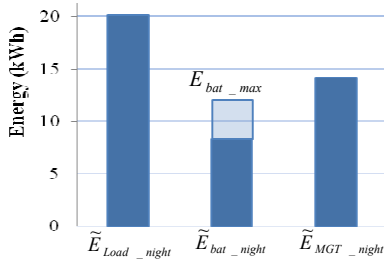


Fig. 9. Energy analysis for the night.

As a communication network exists, it is easy to replace the estimated value of the battery energy with a sensed value, which is sent by the E-box at the beginning of the night ( $t_0 + \Delta t$ ). Between 7h00 and 9h00, the PV power is not enough (fig. 5); the power reference is well calculated for the gas microturbine (fig. 10).

After 9h00 the turbine power reference is set to the minimum value until 17h00. At 19h30, the power reference for the prosumer is adapted to discharge batteries; the peak value of the turbine power reference is reduced (fig. 10). Fig. 11 shows the sensed value of the PV power and the theoretical one, which can be generated with a MPPT algorithm. Between 11h00 and 12h30 the available PV power exceeds the requested power from loads. Fig. 11 shows that all the PV power is not delivered to the grid. The local energy management system has stored or limited part of the available PV power; the implementation is detailed in the next section.

Fig. 12 shows that the real sensed value of the total load power may be significantly different from the 24h-ahead estimated one. The task of the primary control is to eliminate these errors. This primary control is included inside each local energy management of generators.

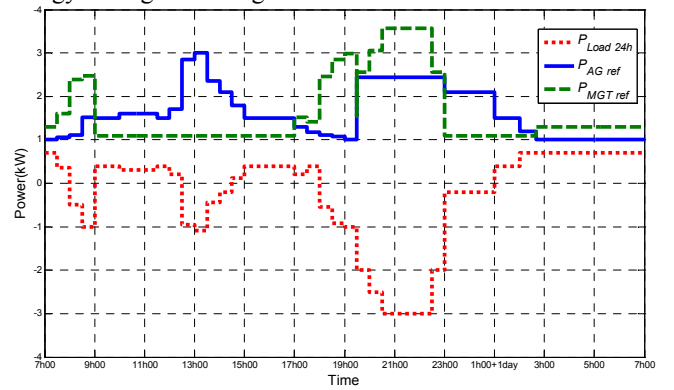


Fig. 10. Power references from the power planning in the central energy management.

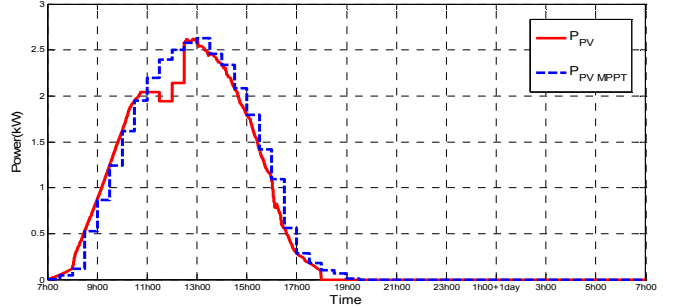


Fig. 11. The measured PV power and the estimated PV power.

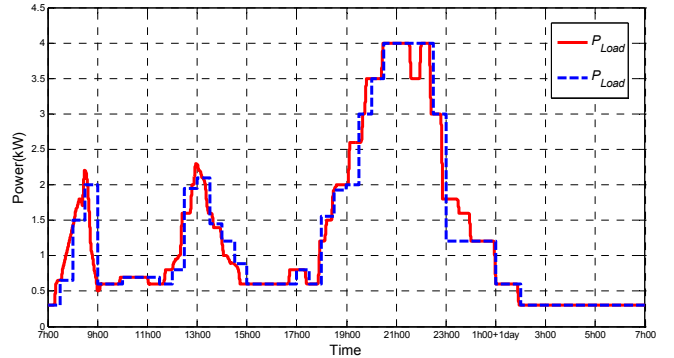


Fig. 12. The measured load and the estimated load.

## V. LOCAL CONTROLLER OF THE PV ACTIVE GENERATOR

### A. Local energy management

The central EMS sends a requested power reference  $P_{AG\_ref0}$  to the active generator each half of an hour. The local controller has to distribute this power reference inside the PV active generator.

In the active generator of the prosumer, two different types of energy storage technologies are coupled with the PV generator. Lead acid batteries are chosen because of their low cost and their wide availability. They can be used as long-term energy storage in case of PV overproduction. In the case of PV energy shortage, they will be used to provide power. However PV panels are not an ideal source for battery charging as the output is unreliable and is dependent on weather conditions. It can cause deep discharging, undercharging and overcharging of batteries. They may damage batteries and shorten their lifetime [18, 19]. Therefore, in order to optimize battery use, a single charging/discharging cycle is set during the day. Moreover, during every half of an hour, the battery charging power reference ( $P_{bat\_ref0}$ ) is constant.

The charging of batteries is decided if the available PV power in MPPT ( $\tilde{P}_{PV\_24h}$ ) is higher than the requested power reference ( $P_{AG\_ref0}$ ) and if batteries are not full (fig. 13). The State Of Charge ( $\tilde{SOC}$ ) has to be estimated [20, 21] and compared with the maximum value ( $\tilde{SOC}_{max}$ ).

The night case is simpler as the PV power is null. The batteries are considered as the main source until that the minimum value of the batteries  $\tilde{SOC}$  is achieved.

For security reasons the obtained battery power reference is limited to the rated power value ( $P_{bat\_max}$ ).

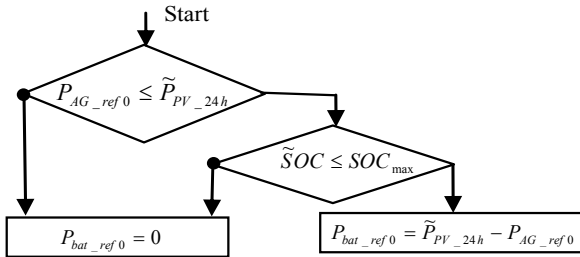


Fig.13. Flow diagram of the battery charging for the battery management.

### B. Primary frequency regulation

The central energy management system sends a wished power reference  $P_{AG\_ref0}$  to the active generator each half of an hour. This quantity is the planned exchanged power of the active generator in a long time range. As uncertainties exist in the load forecasting but also in the PV power prediction, a primary frequency control must be used to adjust the power production of generators in real time in order to achieve the real-time power balancing. A primary frequency control has been implemented onto the active generator in order to ensure the short-term power balancing (fig. 3).

The grid frequency control is a conventional solution to the real-time power balancing [22, 23]. When the frequency deviation exceeds a pre-defined threshold value, the controller

is activated to increase or decrease the power for restoring the power balance. The primary frequency control contribution of the generator is based on a droop constant, which gives the additional power that is supplied as a function of the frequency deviation [24-26] (fig. 14):

$$\Delta P_{AG\_ref}(t) = -k\Delta f(t) = -k(f_0 - \hat{f}(t)). \quad (17)$$

$f_0$  the frequency in the normal operation (50 Hz for our case study),  $\hat{f}$  is the sensed value of the frequency. The power/frequency constant is calculated as:

$$k = \frac{1}{s} \frac{P_{AG\_rated}}{f_0}$$

with the droop:  $s = 5\%$  and  $P_{AG\_rated}$  is the maximum available power, which can be exported to the microgrid.

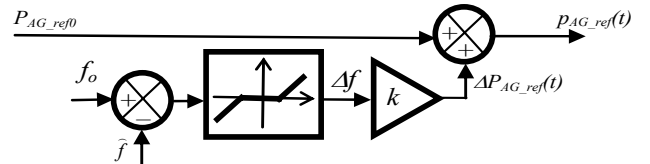


Fig.14. Droop controller for primary frequency control.

### C. Real-time power balancing inside the active generator

The active generator has to provide the real time power reference ( $p_{AG\_ref}(t)$ ), which is the sum of the secondary power reference ( $P_{AG\_ref0}$ ) with the primary power reference ( $\Delta P_{AG\_ref}(t)$ ).

In the active generator of the prosumer, batteries are used to provide guaranteed energy to the microgrid operator. The real-time power balancing must be implemented by a power buffer with fast dynamic capabilities. Ultracapacitors are fast dynamic storage systems with high power exchange capabilities. They are suitable for the optimal charging of the battery and for supplying peak power to the grid if necessary, but their energy density is low.

The real time power balancing depends on the availability of the ultracapacitors. They can be checked if the sensed value of the ultracapacitor voltage ( $\hat{u}_{uc}$ ) is in the security domain, i.e. between a minimum value ( $u_{uc\_min}$ ) and a maximum value ( $u_{uc\_max}$ ). In this "Storage mode", ultracapacitors can be used to increase or decrease the exchanged power with the grid in order to represent a faithful real-time power reference ( $p_{AG\_ref}(t)$ ).

If ultracapacitors are over-loaded ( $\hat{u}_{uc} > u_{uc\_max}$ ), excess PV power can not be stored in them so the produced PV power must be limited to satisfy the real time power reference. This mode is called "PV Limitation Mode".

If the PV power is insufficient and ultracapacitors are discharged it is not possible to supply the real time power reference. This mode is called "No real time power dispatching mode". Thus, one algorithm (corresponding to one operating mode) is executed and calculates power references for each source according to the selected operating mode and the measured quantities (fig. 16). These power references are then

transformed to current or voltage references for closed loop controls [27].

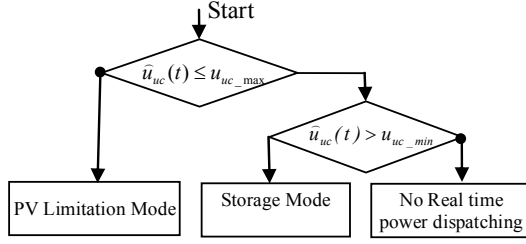


Fig.16. Selection of operating modes.

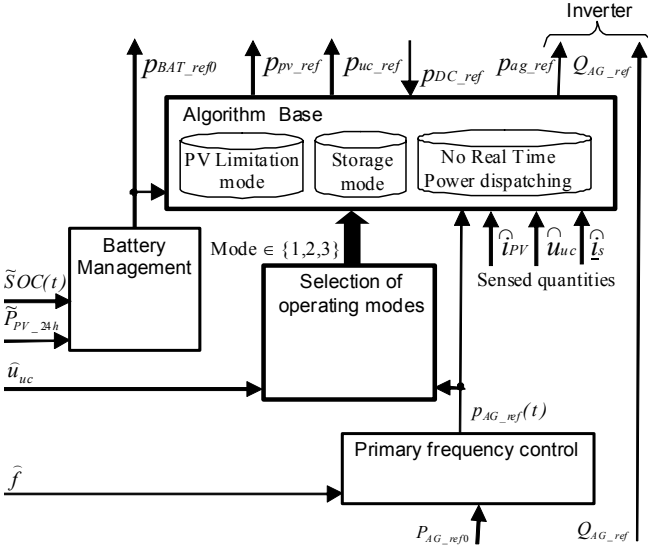


Fig. 17. Organization of the power control of the local controller.

#### D. Real-time power dispatching

The real-time power dispatching among the batteries, the ultracapacitors and the PV generator must be set in order to deduce the prescribed power references.

##### • Mode N°1 (Storage mode)

For this mode the produced electric power from PV panels may be higher or lower than the power reference ( $p_{AG\_ref}(t)$ ). Moreover, ultracapacitors are available and can be used to compensate for this difference. So the active generator can deliver the electric power to meet grid power references.

During the day, the photovoltaic panels are working in MPPT with a particular algorithm ( $f_{MPPT}$ ), which requires the sensed value of the PV current  $\hat{i}_{pv}$ :

$$p_{pv\_ref} = f_{MPPT}(\hat{i}_{pv}). \quad (18)$$

For the theoretical analysis, batteries and ultracapacitors are assumed to be in generating mode. The power flow from the sources to the grid is described in the Fig. 18. The total exchanged power with both storage units is called  $p_{sto}$ . The exchanged power with the capacitor of the DC bus is called  $p_{DC}$ . In fig.18 this power is composed of a positive part ( $p_{DC\_load}$  to increase the DC voltage if necessary) and a

negative part ( $p_{DC\_disload}$  to decrease the DC voltage if necessary). Modelling equations of the power flow are summarized in table I.

If the resistor of the grid filter ( $R$ ) is known, losses can be estimated with the sensed grid currents ( $\hat{i}_s$ ):

$$\tilde{L}_{filter} = 3 \cdot R \cdot \hat{i}_s^2 \quad (19)$$

They are used to calculate the total AC power reference ( $p_{AC\_ref}$ ), which must be supplied by the grid power electronic inverter (control equation  $R4c$  in table 1) [28]. Part of this power is required to regulate the DC bus ( $p_{DC\_ref}$ ).

This power reference is taken into account in the power flow management ( $R3c$  in table 1). The reference of the exchanged power with both storage units is calculated by using an estimation of the produced PV power ( $R2c$ ). Then the power reference for ultracapacitors is obtained by taking into account the value sensed of the batteries' power ( $\hat{p}_{bat}$ ) in the control equation ( $R1c$ ).

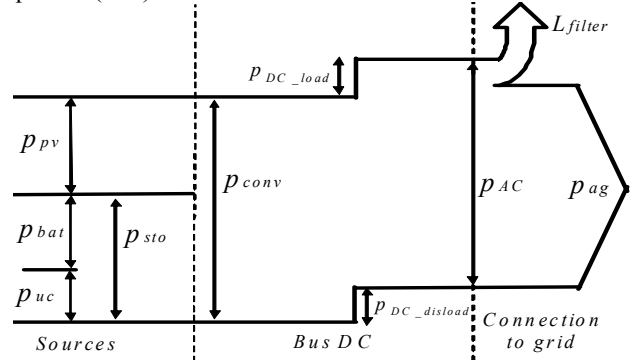


Fig. 18. Power flow in the storage mode.

TABLE I.  
MODELING AND CONTROL EQUATIONS OF THE POWER

Modeling equations	Power management
$p_{sto} = p_{bat} + p_{uc}$ (R1)	$p_{uc\_ref} = p_{sto\_ref} - \hat{p}_{bat}$ (R1c)
$p_{conv} = p_{pv} + p_{sto}$ (R2)	$p_{sto\_ref} = p_{conv\_ref} - \tilde{p}_{pv}$ (R2c)
$p_{AC} = p_{conv} - p_{DC}$ (R3)	$p_{conv\_ref} = p_{AC\_ref} + p_{DC\_ref}$ (R3c)
$p_{ag} = p_{AC} - \tilde{L}_{filter}$ (R4)	$p_{AC\_ref} = p_{ag\_ref} + \tilde{L}_{filter}$ (R4c)

##### • Mode N°2 (Limitation mode)

In this mode ultracapacitors cannot be used to manage the real time power dispatching because they are fully charged. If the available power from the PV panels (in MPPT,  $\tilde{p}_{PV\_MPPT}$ ) is more than the required power reference, it is not possible to send all PV power into storage units. Hence, ultracapacitors have to be setup in a stand by mode:

$$p_{uc\_ref}(t) = 0 \quad (20)$$

The produced power from the PV panels must be limited to the power reference set point:

$$p_{pv\_ref}(t) = p_{conv\_ref}(t) - p_{bat\_ref}(t) \quad (21)$$

The PV converter controller can reduce the PV power production by regulating the voltage across the PV panels ( $u_{pv}$ ).



### Mode N°3 (No real time power dispatching mode)

In this mode, ultracapacitors are **disloaded and so cannot be discharged anymore**. They cannot be used to give more power if the PV power is not enough for the power supply. Hence ultracapacitors have to be setup in stand by:

$$p_{uc\_ref}(t) = 0 \quad (22)$$

And the PV panels must work in MPPT.

## VI. EXPERIMENTAL RESULTS OF A CASE STUDY

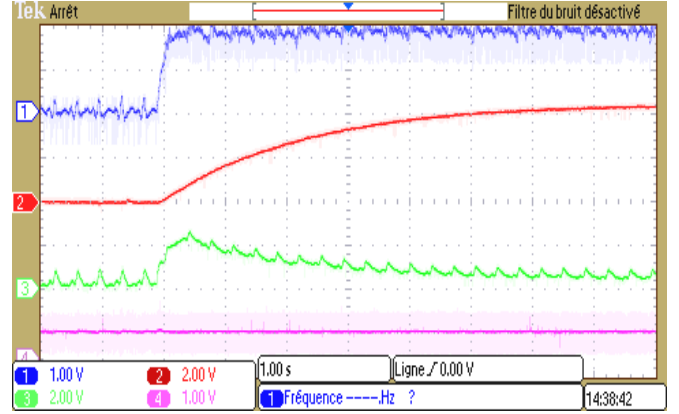
In order to test our energy management, a prototype of the studied active generator has been built. A set of 10kWh batteries and two 112kW (peak power) ultracapacitor modules are used as storage components. The control system is implemented into a DSpace card (fig. 18). Experimental results are presented when the hybrid generator is operated in the storage mode **and** uses ultracapacitors.

In night mode, there is no electrical production from PV power. Fig. 19 shows the variation of the grid power and the powers from both storage units when a step change of the grid power reference ( $P_{AG\_ref0}$ ) from 0 to 200W occurs. The batteries are ordered to be discharged. However, **their** power increases slowly and can not instantaneously satisfy **a sudden power change**. Experimental results show that the ultracapacitors are discharged with a high power **in order** to meet this power reference.

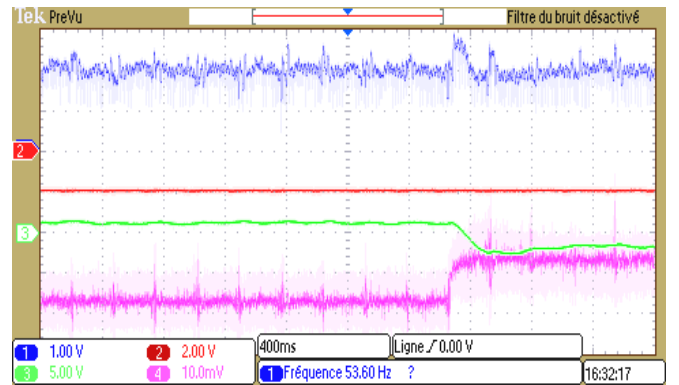
The second experimental test **presented** corresponds to **daytime operation**. A constant 200W power reference ( $P_{AG\_ref0}$ ) is received. The batteries are charged with a power of 100W. In presented experimental results the PV power production varies from 300W to 450W (fig. 20). When the PV production **increases** quickly, the ultracapacitors help to perform the power balancing while charging more power with a higher current. The sensed batteries' power remains constant and variations of the generated grid power **are smaller**.



Fig. 18. Prototype hybrid system for the experimental test.



$P_{AG\_mes}$ (Ch1): 100W/div;  $p_{bat\_mes}$ (Ch2): 50W/div ;  
 $P_{uc\_mes}$ (Ch3): 50W/div;  $u_{dc\_mes}$ (Ch4): 150V/div.  
 Fig. 19. Experimental results in the night mode.



$P_{AG\_mes}$ (Ch1): 100W/div;  $p_{bat\_mes}$ (Ch2): 100W/div ;  
 $P_{uc\_mes}$ (Ch3): 150W/div;  $p_{PV\_mes}$ (Ch4): 150W/div.  
 Fig. 20. Experimental results in the day mode.

## VII. CONCLUSION

In this paper a microgrid organization is studied in order to define **the** roles and **the** required control systems for massive dispersed PV generators' integration in the electrical system. The main problem is that the output power from most renewable energy based generators fluctuates **depending on** weather conditions **when the power quality of the grid may decrease**. A solution **is proposed** to promote and coordinate more efficiently conventional and **PV-based** generators in the plan to lower energy costs for **customers**, to achieve energy independence and **to** reduce greenhouse gas emissions. This work falls into the framework of Smart Grids since the solution relies on an enhanced energy management system and a communication network.

**Power** planning has been proposed to perform the day-ahead power scheduling for the conventional and PV generators. The presented scheme relies on PV power predictions and load forecasting. **The scheme also sets out plans** for the use of the distributed battery storage. Power references are communicated to customers. An open local controller inside an energy box has been developed and presented in order to satisfy grid operator requirements according the local state of **the** sources (state of **the batteries' charge, solar radiation, etc**). At the customer side, two storage technologies are used to enable grid demand

management and renewable energy integration. Batteries are used to ensure an energy reserve for the grid operator. **Supercapacitors are used to balance fast power variations coming from the PV generator and from the primary frequency control.** A strategy has been presented to drive them according to the solar energy resources and grid requirements. Experimental results of the proposed smart grid solution for planning and operating the microgrid are presented. Currently, further research is **aimed at hypothetical** business cases associated with smart grids and distributed resource integration to provide more value to the microgrid management.

## VIII. ACKNOWLEDGMENT

This work is supported by the French National Agency for Research (ANR SuperEner Project) and the AUF.

## REFERENCES

- [1] M. Liserre, T. Sauter, J. Y. Hung, "Future Energy Systems, integrating renewable energy sources into the smart power grid through industrial electronics", *IEEE Industrial Electronics magazine*, pp18-37, vol. 4, no1, march 2010.
- [2] T. Zhou, B. François, "Modelling and control design of hydrogen production process for an active wind hybrid power system", *International Journal of Hydrogen Energy*, Elsevier, vol.34, 2009, pp 21-30.
- [3] I. Hadipaschalis, A. Poullikkas, V. Efthimiou, "Overview of current and future energy storage technologies for electric power applications", *Renewable and sustainable energy reviews*, 13, 2009, pp 1513-1522.
- [4] M.E. Glavin, P.K.W. Chan, S. Armstrong, W.G. Hurley, "A stand-alone photovoltaic supercapacitor battery hybrid energy storage system", *13<sup>th</sup> Power electronics and motion control conference*, 2008, CDROM.
- [5] J. Hirsch, "Performance of open-standard PLV technologies on ERDF distribution network", *Metering '09*, 9-10 June 2009, London, UK
- [6] R. Hara, H. Kita, T. Tanabe, H. Sugihara, A. Kuwayam, S. Miwa, "Testing the technologies – Demonstration Grid-Connected Photovoltaic projects in Japan", *IEEE PES Power & Energy Magazine*, May-June 2009, p. 77-85.
- [7] N. Hatziaargyriou, H. Asano, R. Iravani, C. Marnay, "Microgrids", *IEEE Power&Energy magazine*, pp78-94, july/august 2007.
- [8] B. Kroposki, R.Lasseter, T. Ise, S. Morozumi, S. Papathanasiou, N. Hatziaargyriou, "Making microgrids work", *IEEE Power&Energy magazine*, May-June 2008.
- [9] D. Lu, B. Francois, "Strategic framework of an energy management of a microgrid with photovoltaic-based active generator", *Electromotion 2009 EPE chapter*, Lille, 1-3 July 2009, CD-ROM.
- [10] M. Mcranaghan, A. Chuang, "Functions of a Local Controller to Coordinate Distributed Resources in a Smart Grid", *IEEE PES General Meeting*, 20-24 July 2008, CD-ROM.
- [11] X. Vallvé, A. Graillot, S. Gual, H. Colin, "Micro storage and demand side management in distributed PV grid-connected installations", *9<sup>th</sup> international conference, Electrical power quality and utilization*, Barcelona, 9-11 October 2007, CD-ROM.
- [12] S.J. Chiang, K.T. Chang, C.Y. Yen: Residential photovoltaic energy storage system, *IEEE Transactions on Industrial Electronics*, vol. 45, iss. 3, pp385 – 394, June 1998.
- [13] G. Delille, B. Francois, "A review of some technical and economic features of energy storage technologies for distribution systems integration", *Ecological Engineering and Environment Protection*, No1, p. 40-49, ISSN 1311-8668, 2009.
- [14] C. Abbey and G. Joos, "Supercapacitor Energy Storage for Wind Energy Applications", *IEEE Transactions on Industrial Electronics* vol.43, iss.3, pp.769-776, May 2007.
- [15] F. Baalbergen, P. Bauer, J.A. Ferreira, "Energy Storage and Power Management for Typical 4Q-Load", *IEEE Transactions on Industrial Electronics*, vol.56, iss.5, pp. 1485 - 1498, May 2009.
- [16] E. Figueres, G. Garcera, J. Sandia, F-G Espin, J. Rubio, "Sensitivity study of the dynamics of three-phase photovoltaic inverters with an LCL grid filter", *IEEE Transactions on Industrial Electronics*, vol.56, no.3, March 2009.
- [17] RTE (Réseau de Transports d'Electricité) de France, "Consommation française d'électricité caractéristiques et méthode de prevision", web site <http://www.rte-france.com/>
- [18] R. Kaiser, "Optimized battery-management system to improve storage lifetime in renewable energy systems", *Journal of Power Sources*, Vol. 168, Iss. 1, 25 May 2007, pp58-65.
- [19] M. Lafoz, L. Garcia-Tabarés, M. Blanco, "Energy management in solar photovoltaic plants based on ESS", *Power Electronics and Motion Control Conference, EPE-PEMC 2008*. 13<sup>th</sup>, Poznan, 1-3 Sept. 2008, CD-ROM.
- [20] Y. Lee, W. Wang, T. Kuo, "Soft computing for battery state of charge (BSOC) estimation in battery string systems", *IEEE Transactions on Industrial Electronics*, vol.55, no.1, January 2008
- [21] R. Kaiser, "Optimized battery-management system to improve storage lifetime in renewable energy systems", *Journal of Power Sources*, Vol. 168, Iss. 1, 25 May 2007, pp58-65.
- [22] J. Morren, S. W. H. de Haan, J. A. Ferreira, "Contribution of DG units to primary frequency control", *European transactions on electrical power*, 2006, 16, pp. 507-521
- [23] V. Courtecuisse, B. Robyns, B. François, M. Petit, J. Deuse, "Variable speed wind generators participation in primary frequency control", *Wind engineering*, vol. 32, no3, pp 299-318, 2008.
- [24] J. Vasquez, J. Guerrerro, A.Luna, P. Rodriguez, R. Teodorescu, "Adaptive droop control applied to voltage source inverters operating in grid-connected and islanded mode", *IEEE Transactions on Industrial Electronics*, vol.56, no.10, October 2009
- [25] B. Awad, J.Wu, N. Jenkins, "Control of distributed generation", *Elektrotechnik & Informationstechnik*, August 2008
- [26] P. Li, P. Degobert, B. Robyns, B. Francois, "Participation in the frequency regulation control of a resilient microgrid for a distribution network", *International Journal of Integrated Energy Systems*, vol.1, no1, January-June 2009.
- [27] D. Lu, T. Zhou, H. Fakhm, B. Francois, "Design of a power management system for a PV station including various storage technologies", *13<sup>th</sup> International Power Electronics and Motion Control Conference, EPE-PEMC 2008*, Poznan, 1-3 septembre 2008, 9-2008, CD-ROM.
- [28] D. Lu, T. Zhou, H. Fakhm, B. Francois, "Application of Petri Nets for the energy management of a photovoltaic based power station including storage units", *Renewable energy*, Elsevier, vol. 35, Iss. 6, pp. 1117-1124, 2010.