

Supplementary material to:

The global chemistry transport model TM5: description and evaluation of the tropospheric chemistry version 3.0

V. Huijnen¹, J. Williams¹, M. van Weele¹, T.P.C. van Noije¹, M.C. Krol^{2,3,4}, F. Dentener⁵, A. Segers⁶, S. Houweling^{3,7}, W. Peters^{2,8}, A.T.J. de Laat¹, K.F. Boersma¹, P. Bergamaschi⁵, P.F.J. van Velthoven¹, P. Le Sager¹, H.J. Eskes¹, F. Alkemade¹, M.P. Scheele¹, P. Nédélec⁹, H.-W. Pätz¹⁰

¹Royal Netherlands Meteorological Institute, De Bilt, The Netherlands

²Dept. of Meteorology and Air Quality, Wageningen University, Wageningen, The Netherlands

³SRON Netherlands Institute for Space Research, Utrecht, The Netherlands

⁴Institute for Marine and Atmospheric Research Utrecht (IMAU), Utrecht, The Netherlands

⁵European Commission, Joint Research Centre, Institute for Environment and Sustainability, 21027 Ispra (VA), Italy

⁶TNO Built Environment and Geosciences, Department of Air Quality and Climate, Utrecht, The Netherlands

⁷Institute for Marine and Atmospheric Research Utrecht (IMAU), Utrecht, The Netherlands

⁸NOAA Earth System Research Laboratory, Boulder, CO, USA

⁹CNRS, Laboratoire d'Aérodynamique, 31400 Toulouse, France

¹⁰ICG-2, Forschungszentrum Jülich, Jülich, Germany

Correspondence to: V. Huijnen (huijnen@knmi.nl)

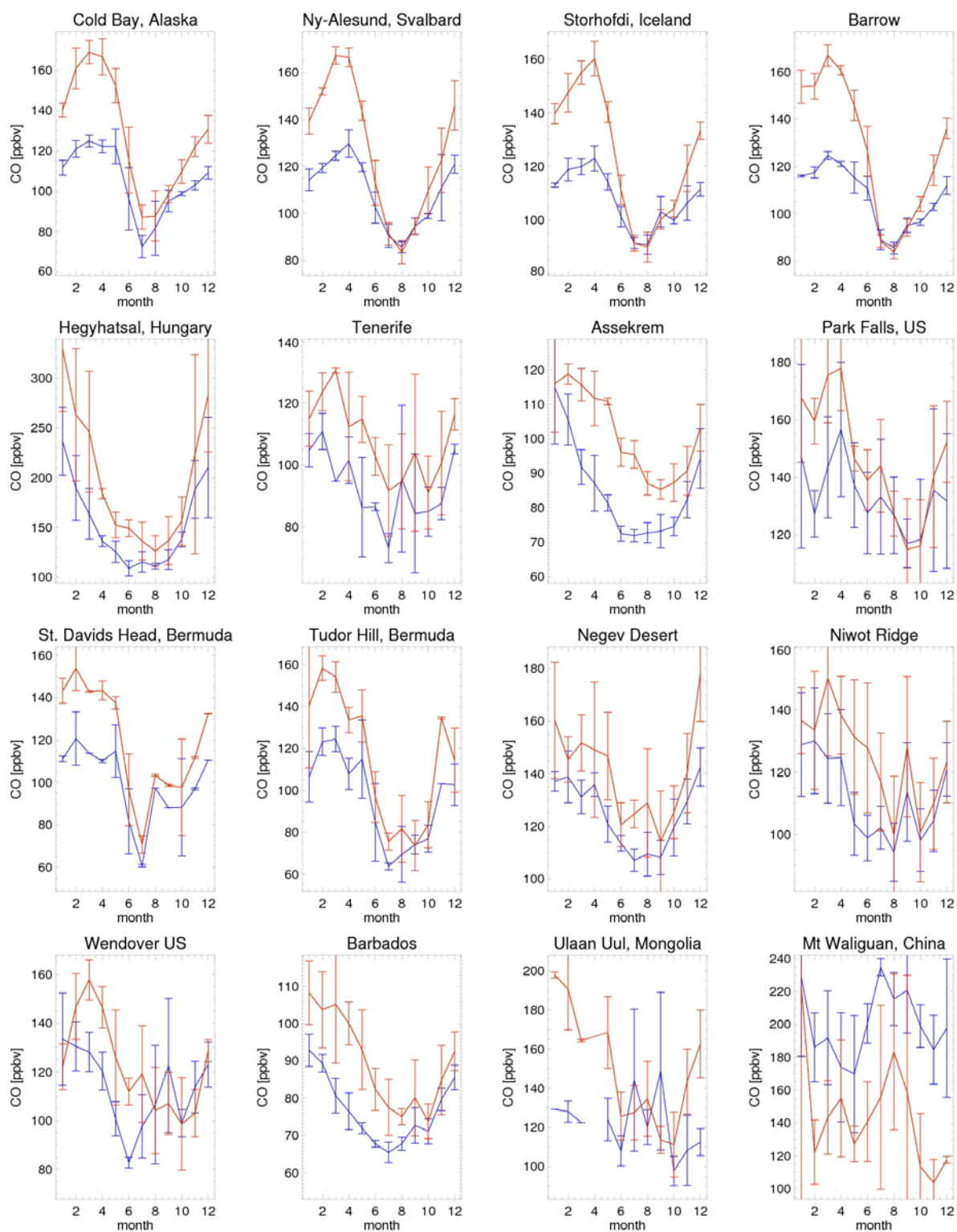


Figure S1. A comparison of the annual cycle in surface CO concentrations from TM5 (blue) to GMD station measurements (red). Model data has been sampled at the time of the observations and the bars indicate the standard deviations of the monthly mean.

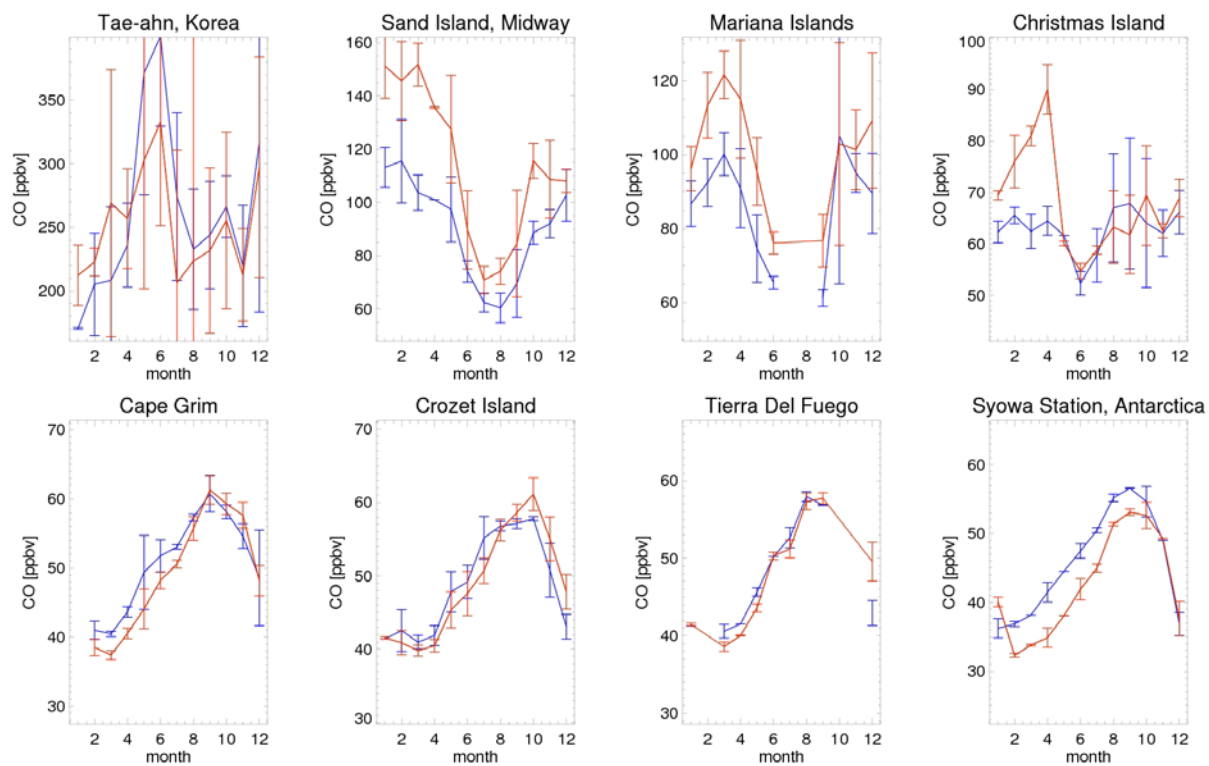


Figure S1. Continued.

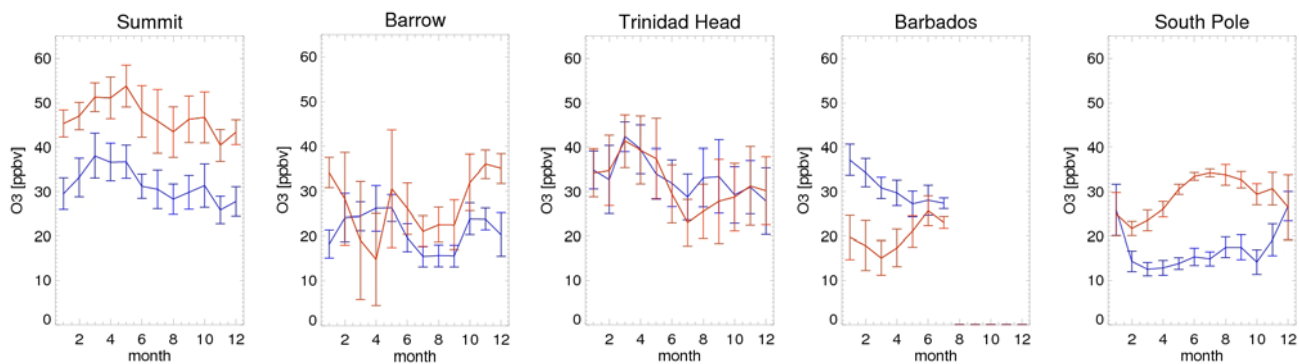


Figure S2. A comparison of the monthly mean concentrations in surface O₃ concentrations from TM5 (blue) to GMD station measurements (red). Model data has been sampled at the time of the observations and the bars indicate the standard deviations of the monthly mean.

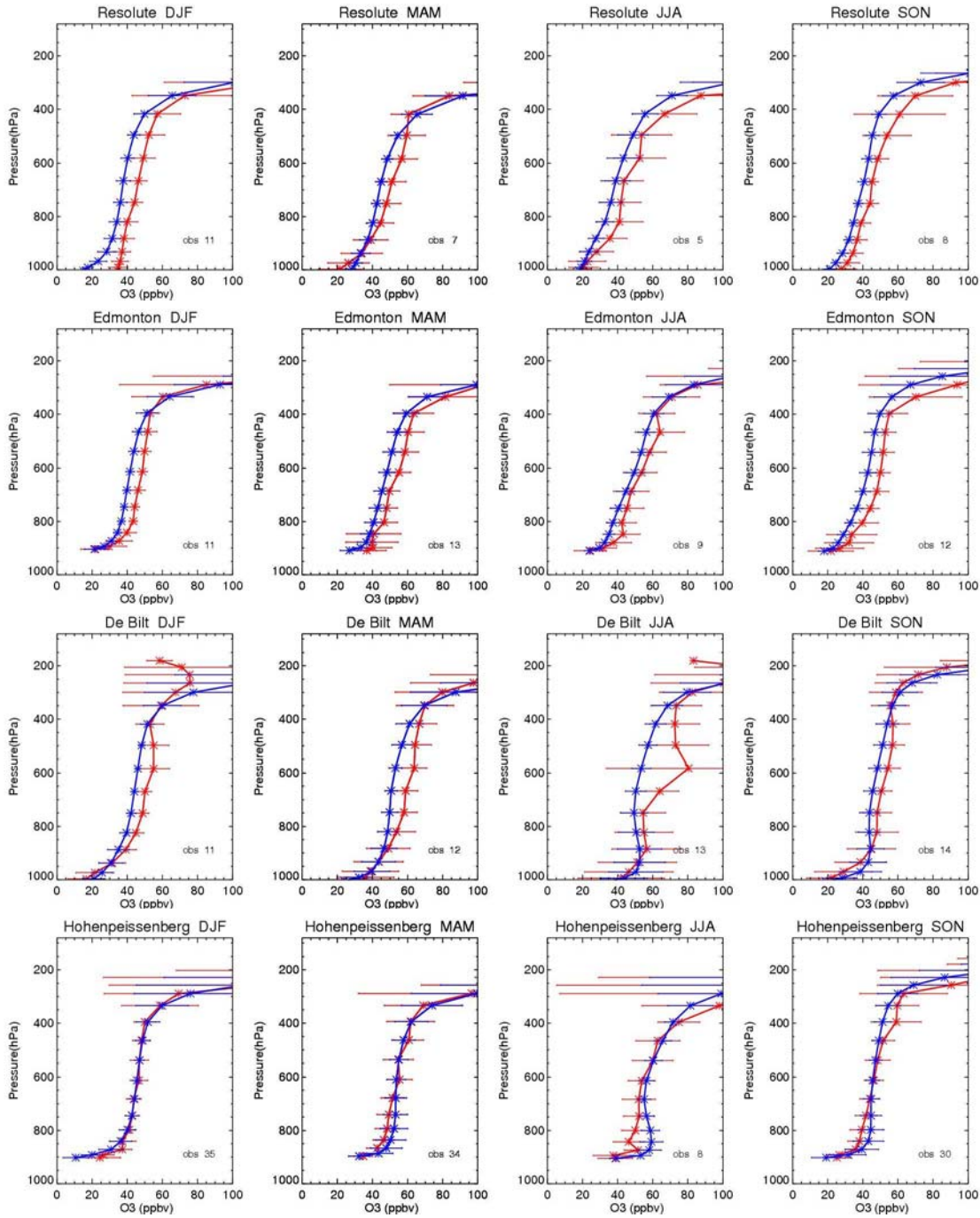


Figure S3. Comparison of seasonally averaged modeled ozone profiles (blue) to WOUDC sonde observations (red). The bars indicate the standard deviations of the monthly mean. Stations are: Resolute (74°N, 95°W), Edmonton (53°N, 114°W), De Bilt (52°N, 5°E), Hohenpeissenberg (47°N, 11°E), Naha (26°N, 127°E), Cotonou (6°N, 2°E), Paramaribo (5°N, 55°W), San Christobal (0°S, 89°W), Sepang Airport (2°N, 101°E), Nairobi (1°S, 36°E), Natal (5°S, 35°W), Samoa (14°S, 170°W), La Reunion (21°S, 55°E), Neumayer (70°S, 8°W).

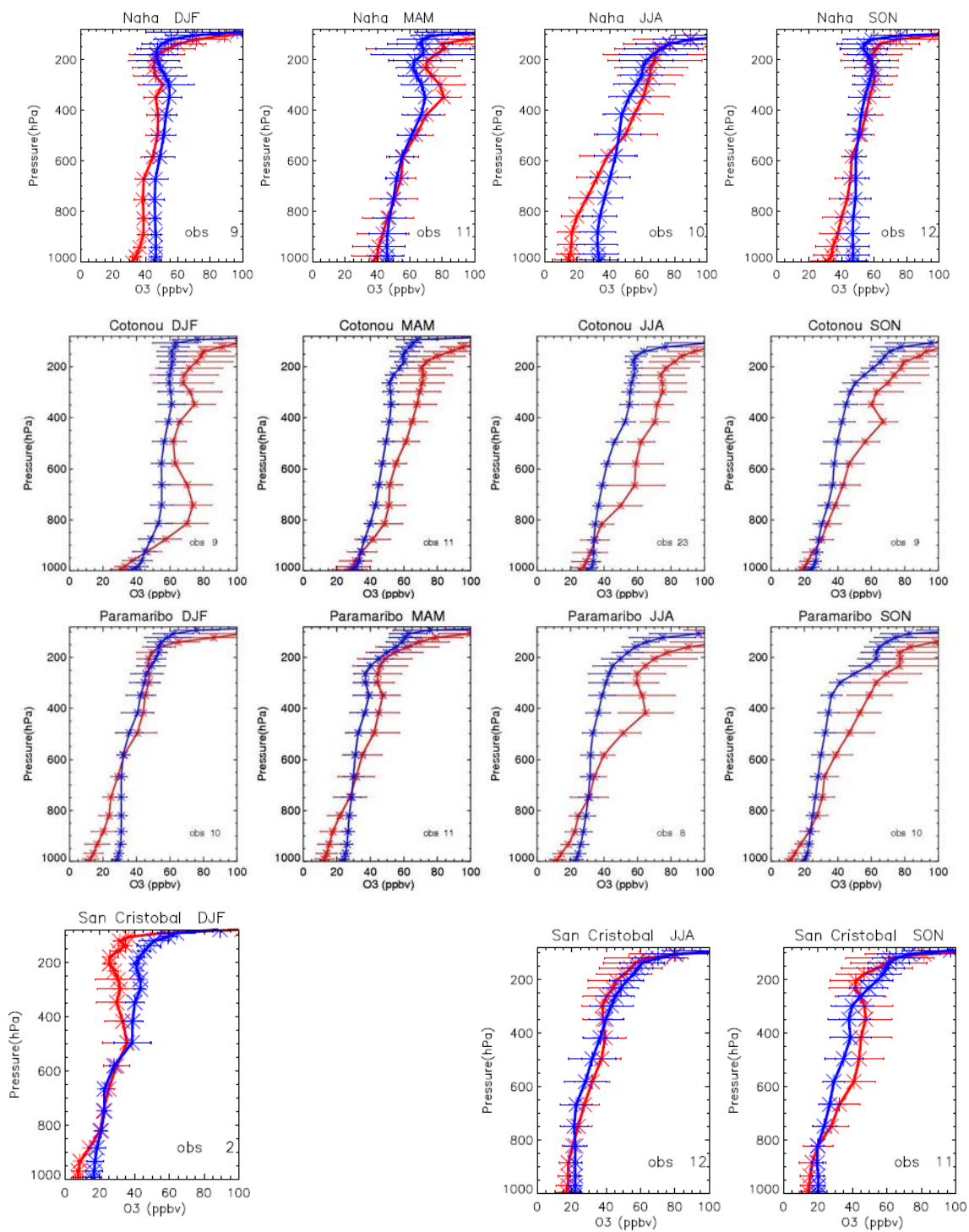


Figure S3. Continued.

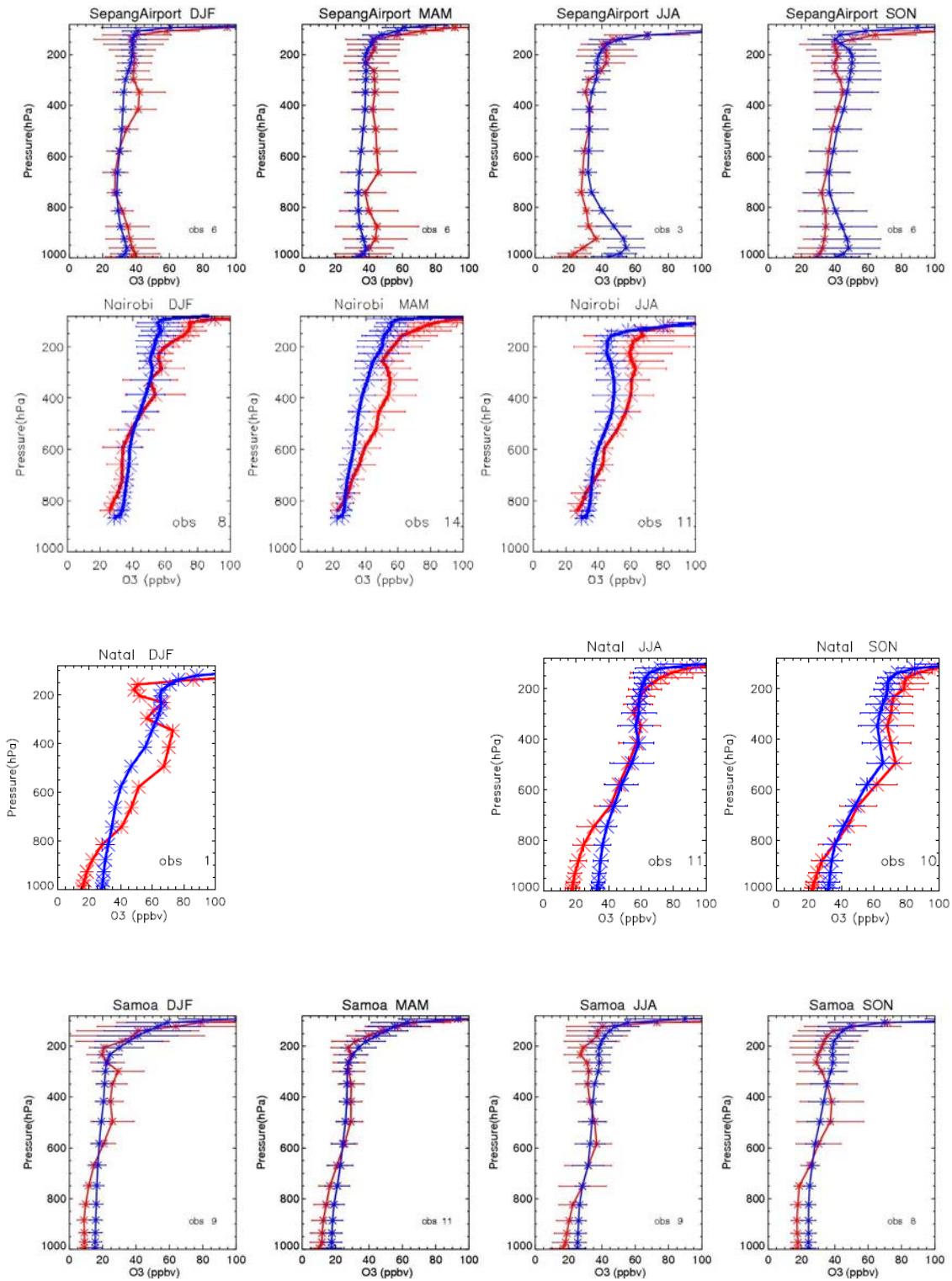


Figure S3. Continued.

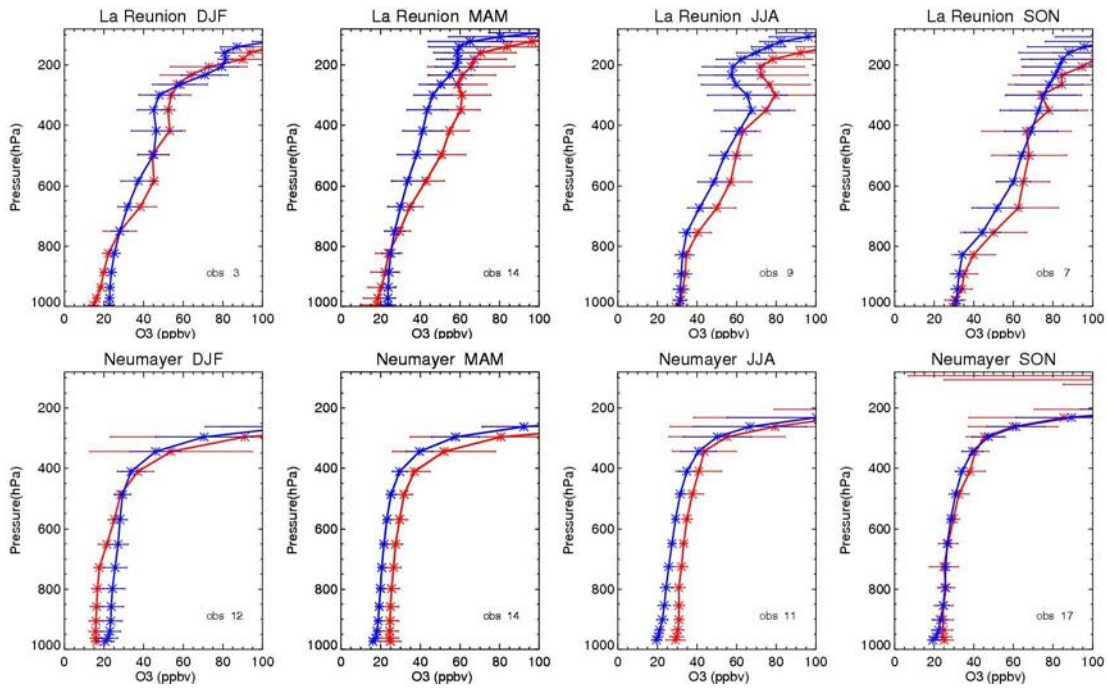


Figure S3. Continued.