



Advancing policies and practices that  
sustain working lands, connected  
landscapes, and native species

# Conservation Innovation Grant

## *Economic Solutions for Scaling Conflict Reduction*

“Our goal is to produce reliable information on the costs and effectiveness of techniques used to reduce conflict with large carnivores”

Implement and evaluate non-lethal predator control

Facilitate peer-to-peer learning

Synthesize Results for farm bill planning

Integrate collective experience



# Regional Conservation Partnership Program

*Increasing access to cost-sharing*

*Dedicated capacity for conservation technical and financial assistance to producers operating on landscapes that currently are or are likely to be occupied by large predators, with a focus on wolves and grizzly bears.*

**ADAPT**

**INNOVATE**

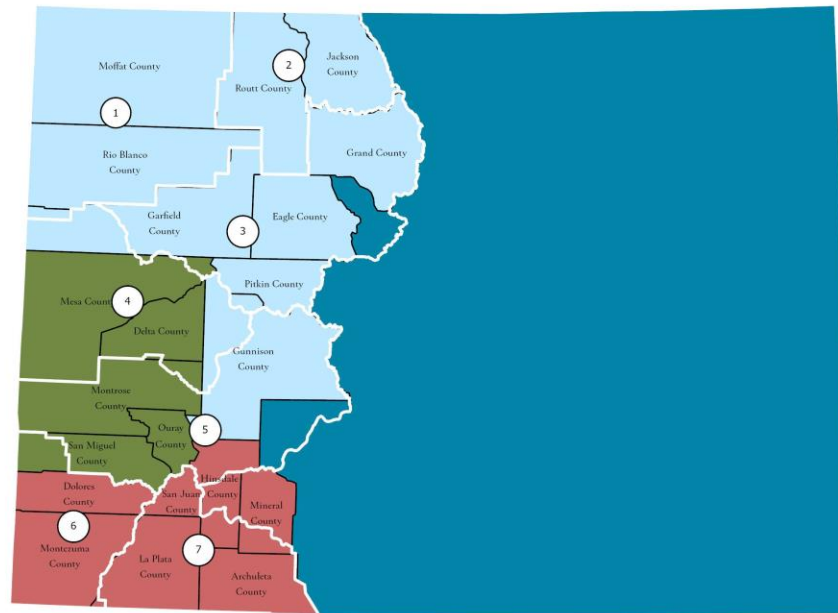
**COLLABORATE**



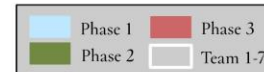
*Photo by Erika Peterman*

# Regional Conservation Partnership Program

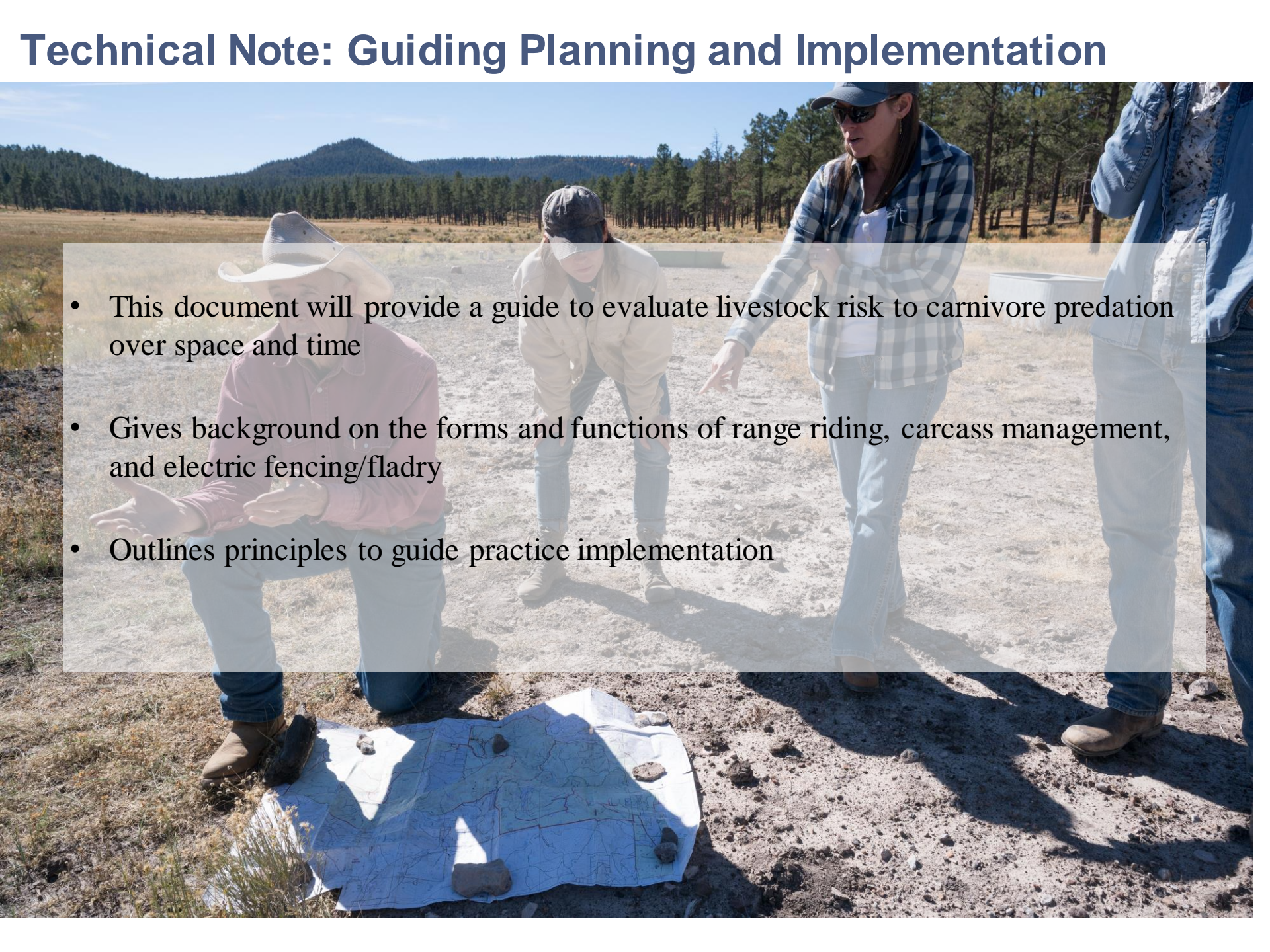
*Increasing access to cost-sharing*



Participating Counties - Colorado



# Technical Note: Guiding Planning and Implementation

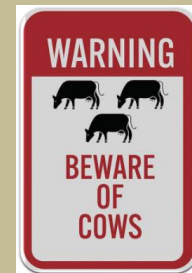
- 
- A photograph showing four people in a field. One person is kneeling on the left, looking at a map on the ground. Another person is standing in the center, looking down. A third person is standing on the right, pointing towards the map. A fourth person is partially visible on the far right. The background shows a field with trees and a mountain in the distance.
- This document will provide a guide to evaluate livestock risk to carnivore predation over space and time
  - Gives background on the forms and functions of range riding, carcass management, and electric fencing/fladry
  - Outlines principles to guide practice implementation

# Risk Assessment Framework

## Factors to Consider

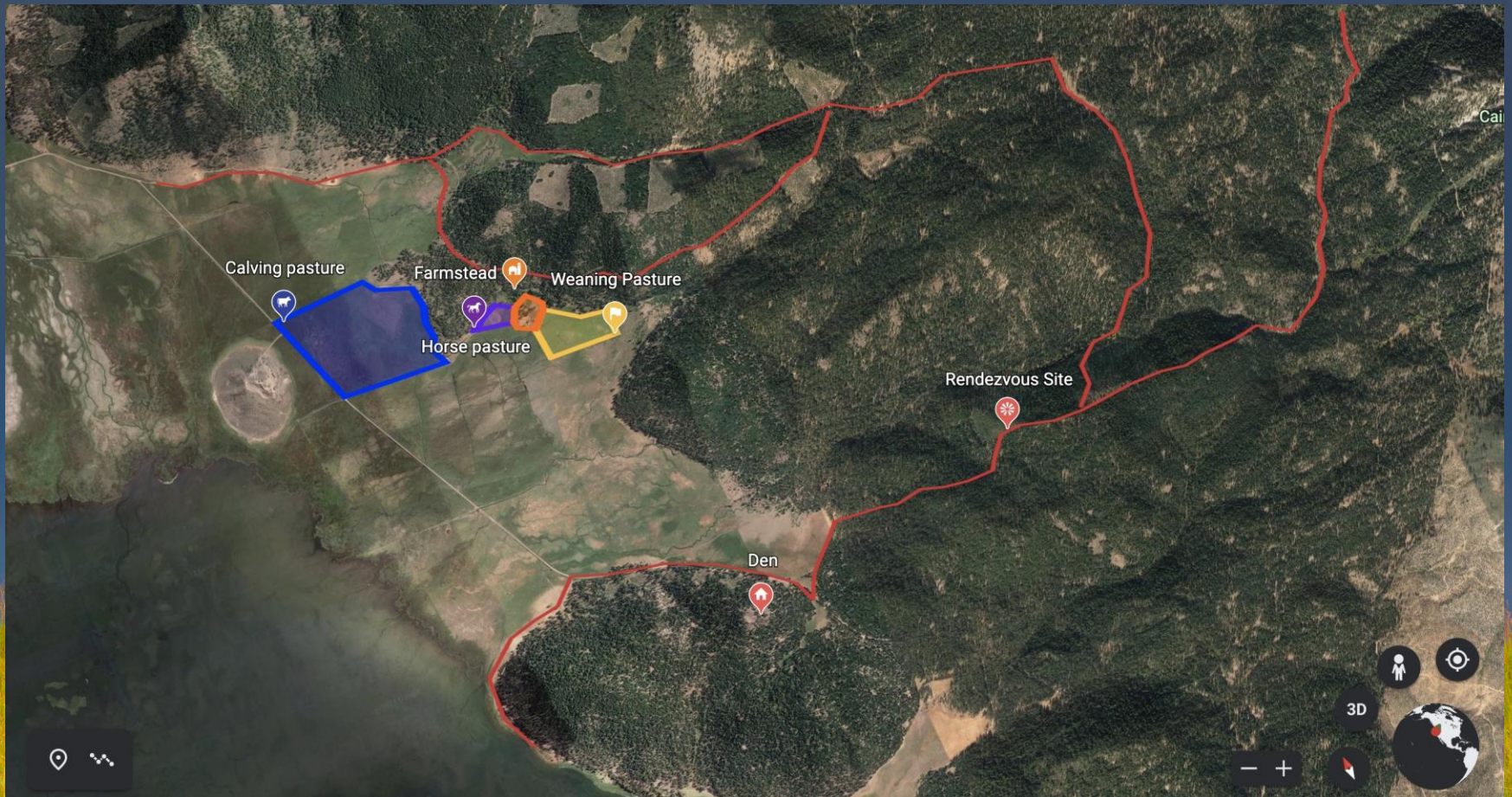
- **Species:** livestock, predators and prey
- **Place:** biotic and abiotic conditions
- **Time:** temporal setting and changes over time
- **Disturbance:** events that influence behavior and ecosystem dynamics
- **Landscape/Land Use:** size, shape, and relationships

These five factors were adapted from Dale et al. 2000. Ecological Principles and Guidelines for Managing the Use of Land, a report of the Ecological Society of America Committee on Land Use



# Ranch Landscape Stratification

Ranch landscape stratification - conflict prevention techniques support **localized, spatial and/or temporal separation between predators and livestock** within a **dynamic working-wild landscape**, leading to more permeable **habitats that allow for wildlife movements** within and across **connected, working landscapes**.



# Working Wild Challenge

*Increasing the Influence of Landowners*

# Thank You!

*Photo by Erika Peterman*

