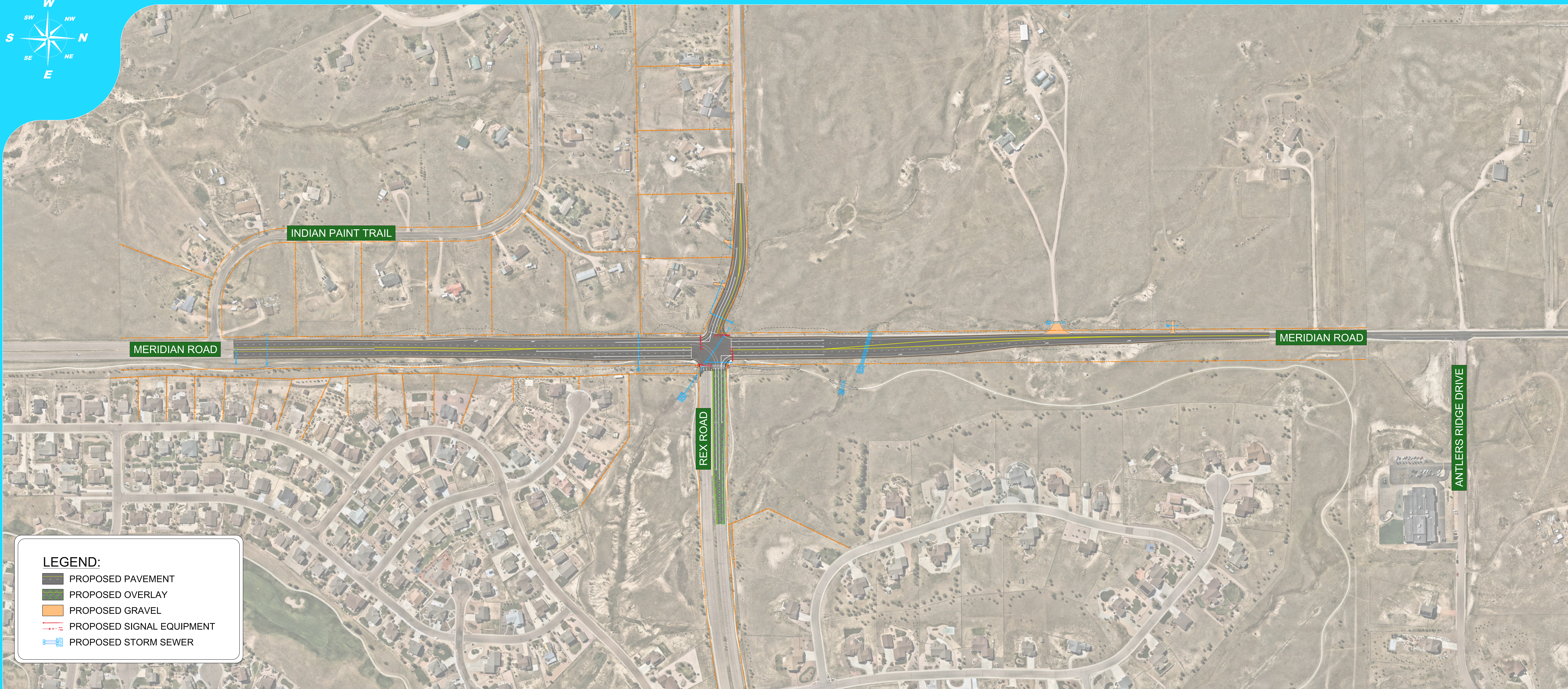
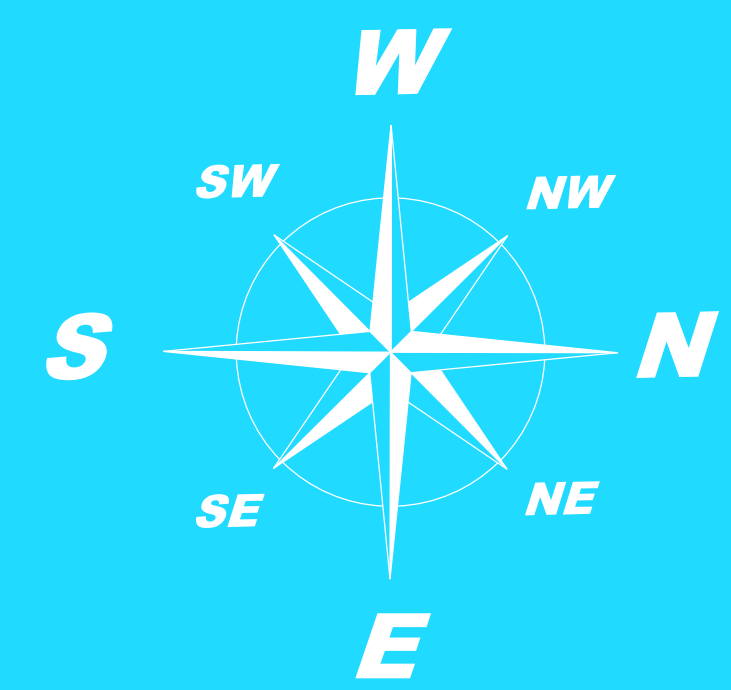


# REX ROAD AND MERIDIAN ROAD INTERSECTION SIGHT DISTANCE ISSUES





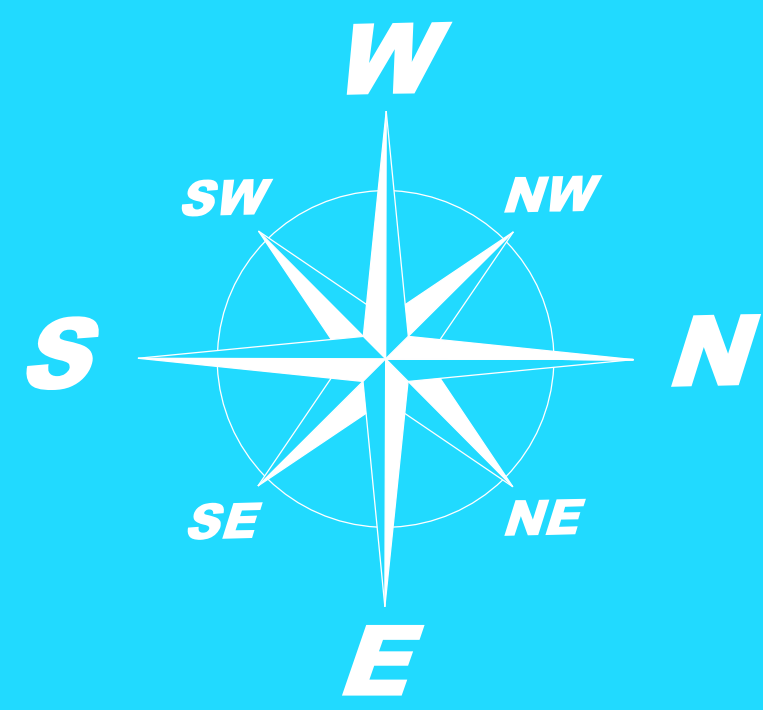
**LEGEND:**

- PROPOSED PAVEMENT
- PROPOSED OVERLAY
- PROPOSED GRAVEL
- PROPOSED SIGNAL EQUIPMENT
- PROPOSED STORM SEWER

# REX ROAD AND MERIDIAN ROAD INTERSECTION IMPROVEMENTS

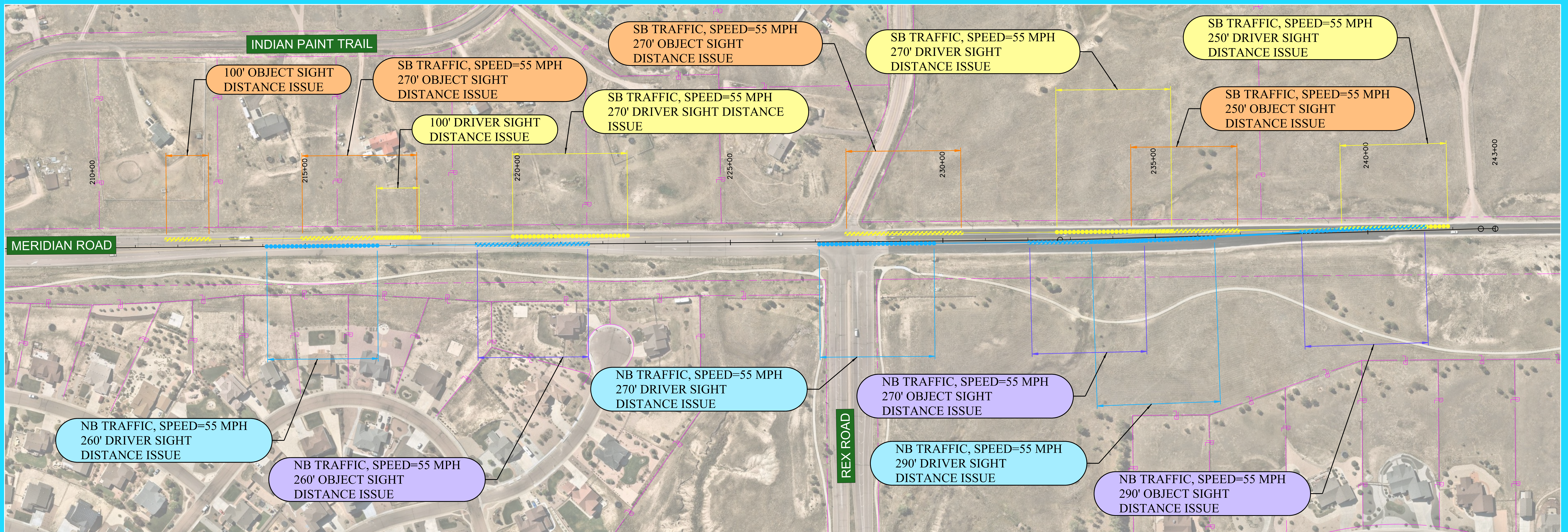
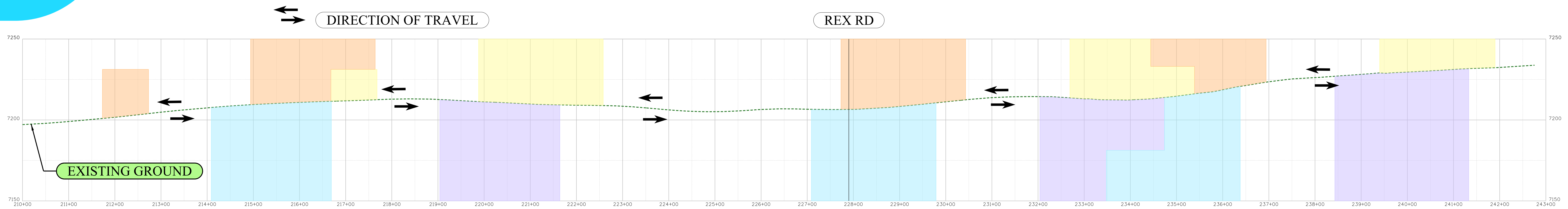
## PROJECT OVERVIEW



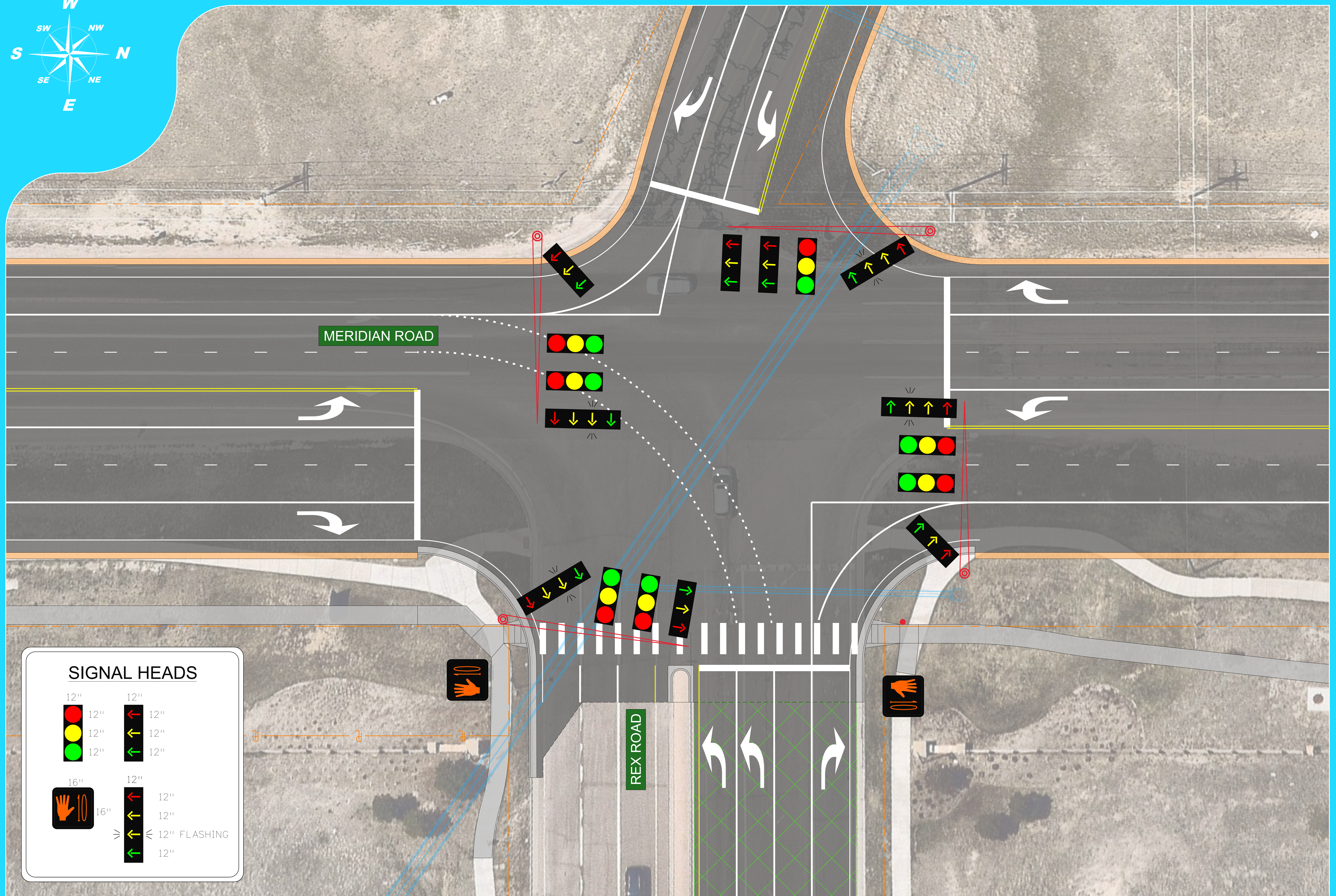
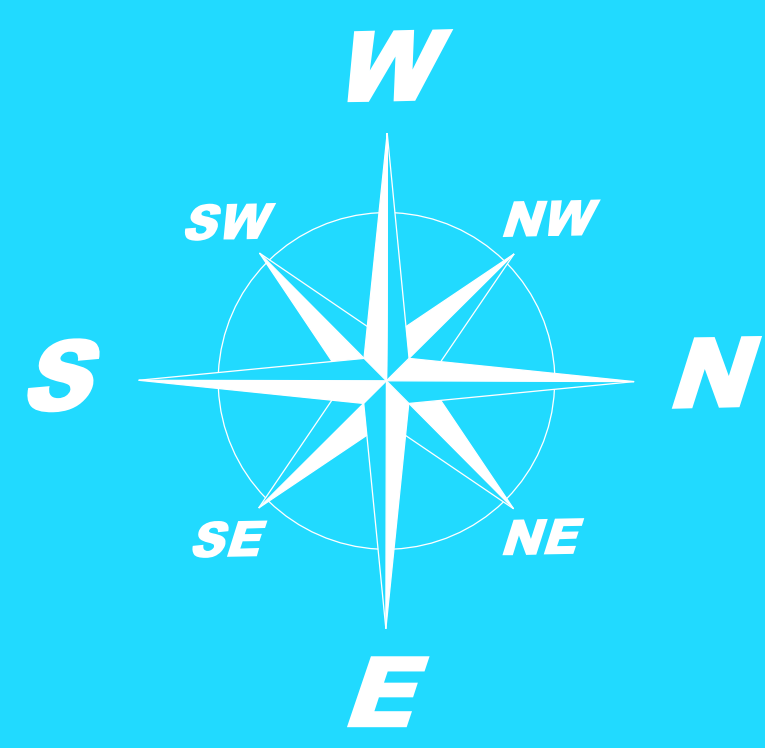


SB DRIVERS IN THE YELLOW AREA TRAVELING AT MORE THAN 55MPH CANNOT SEE OBJECTS IN THE ORANGE AREA

NB DRIVERS IN THE BLUE AREA TRAVELING AT MORE THAN 55MPH CANNOT SEE OBJECTS IN THE PURPLE AREA



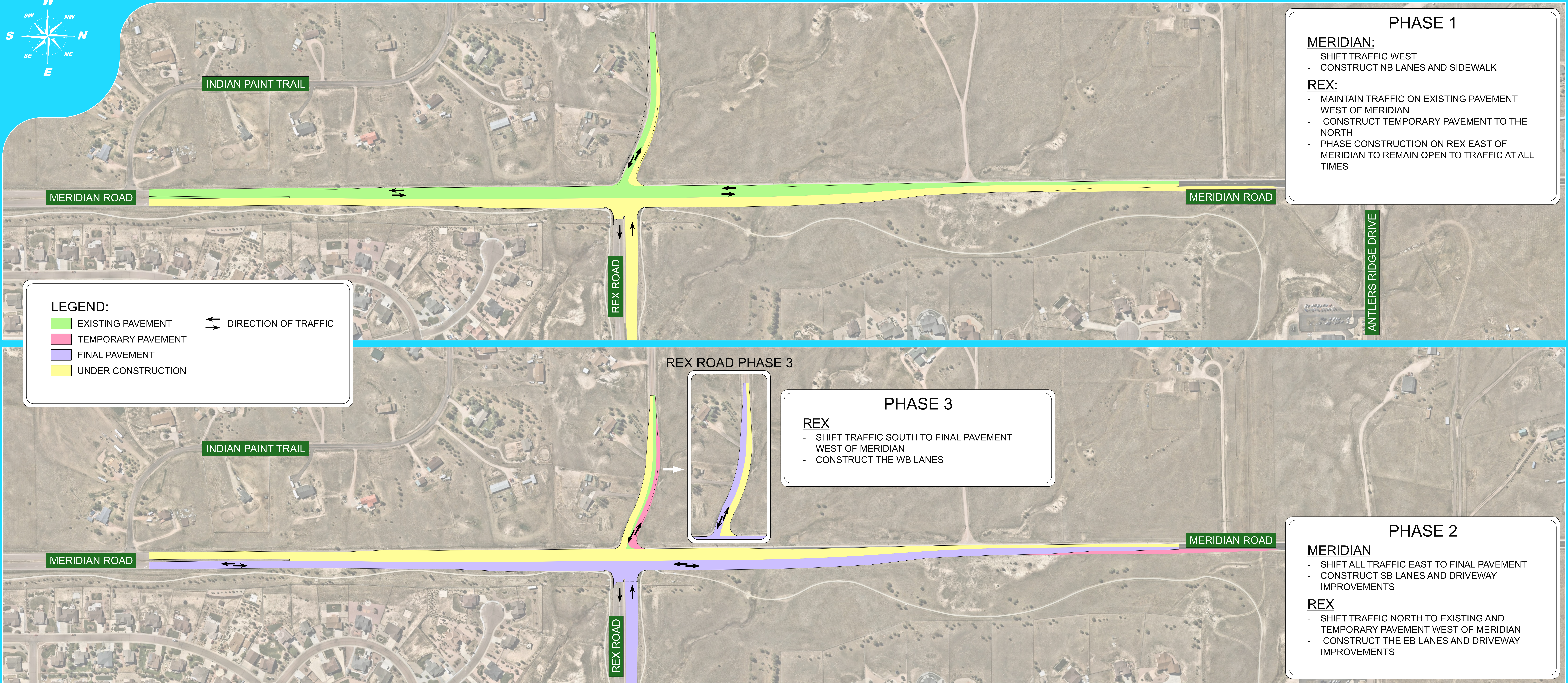
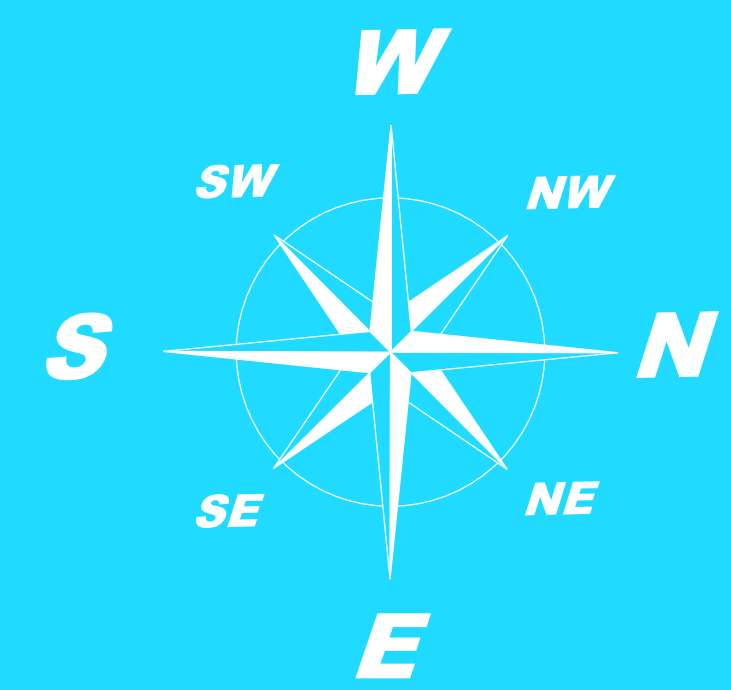
# REX ROAD AND MERIDIAN ROAD EXISTING SIGHT DISTANCE ISSUES - 55 MPH



**SIGNAL HEADS**

12"	12"	12"	12"
12"	12"	12"	12"
12"	12"	12"	12"
16"	16"	12"	12"
16"	16"	12"	12"
		12" FLASHING	12"
		12"	12"

# REX ROAD AND MERIDIAN ROAD INTERSECTION IMPROVEMENTS - SIGNAL LAYOUT



### PHASE 1

- MERIDIAN:**
- SHIFT TRAFFIC WEST
  - CONSTRUCT NB LANES AND SIDEWALK
- REX:**
- MAINTAIN TRAFFIC ON EXISTING PAVEMENT WEST OF MERIDIAN
  - CONSTRUCT TEMPORARY PAVEMENT TO THE NORTH
  - PHASE CONSTRUCTION ON REX EAST OF MERIDIAN TO REMAIN OPEN TO TRAFFIC AT ALL TIMES

### LEGEND:

- █ EXISTING PAVEMENT
- █ TEMPORARY PAVEMENT
- █ FINAL PAVEMENT
- █ UNDER CONSTRUCTION
- DIRECTION OF TRAFFIC

### PHASE 3

- REX**
- SHIFT TRAFFIC SOUTH TO FINAL PAVEMENT WEST OF MERIDIAN
  - CONSTRUCT THE WB LANES

### PHASE 2

- MERIDIAN**
- SHIFT ALL TRAFFIC EAST TO FINAL PAVEMENT
  - CONSTRUCT SB LANES AND DRIVEWAY IMPROVEMENTS
- REX**
- SHIFT TRAFFIC NORTH TO EXISTING AND TEMPORARY PAVEMENT WEST OF MERIDIAN
  - CONSTRUCT THE EB LANES AND DRIVEWAY IMPROVEMENTS

# REX ROAD AND MERIDIAN ROAD INTERSECTION IMPROVEMENTS POSSIBLE CONSTRUCTION PHASING