



WELCOME TO EL PASO COUNTY PUBLIC INFORMATION MEETING



REX & MERIDIAN INTERSECTION IMPROVEMENTS PROJECT - PUBLIC INFORMATION MEETING

6 - 7:30 p.m. (Presentation begins at 6:15 p.m. followed by Q&A)

Falcon Fire Protection District Headquarters, Community Room
7030 Old Meridian Road, Peyton, CO 80831

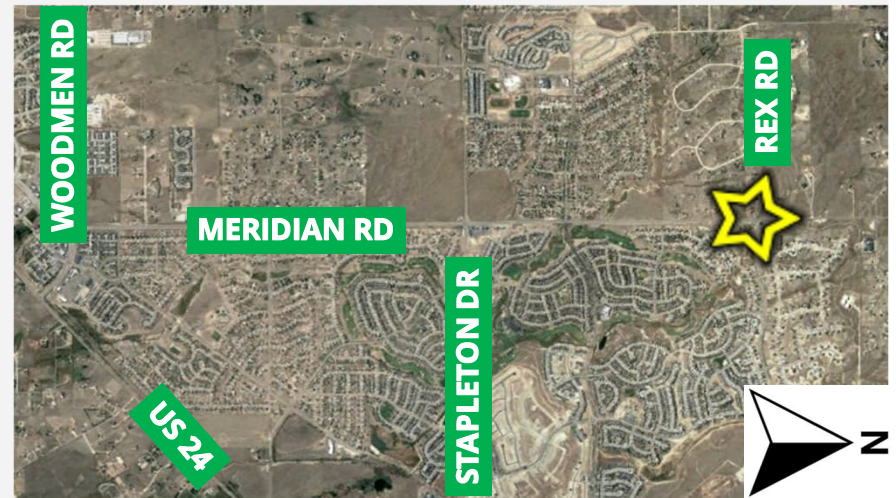


PROJECT DESCRIPTION

El Paso County has designed improvements for the Rex Road at Meridian Road intersection north of Falcon.

Improvements consist of installing a traffic signal, improving sight distance, widening Meridian Road to four lanes, adding turn lanes on Rex Road, pavement reconstruction of both Rex and Meridian roads, stormwater improvements, and utility relocations.

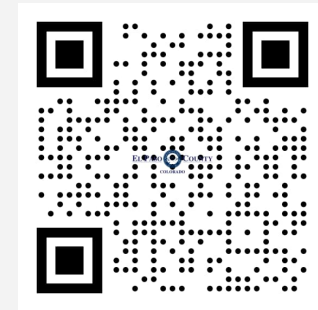
Construction Start – early 2024;
Completion – late 2025





MEETING AGENDA

- Introductions/Agenda:** Lisa Bachman, Meeting Facilitator
- Welcoming Remarks:** El Paso County Commissioner Carrie Geitner,
District 2
- Presentation/Q&A:** Josh Palmer, El Paso County
Omar Lopez, El Paso County
Wes Suchsland, AECOM
- Q&A/Next Steps:** Lisa Bachman



NOTE: Tonight's PowerPoint presentation and displays can be viewed on the El Paso County project webpage at: <https://www.elpasoco.com/>



PROJECT OVERVIEW

Project Background

- Design activities
 - Traffic Impact Study
 - Engineering design
- Right-of-Way impacts
- Bid process





PROJECT OVERVIEW

Reasons for the Project

- Improved traffic operations and safety
 - Increased growth and development
 - Poor sight distances
 - Poor level of service at the intersection
 - Improved ADA facilities crossing Rex Road

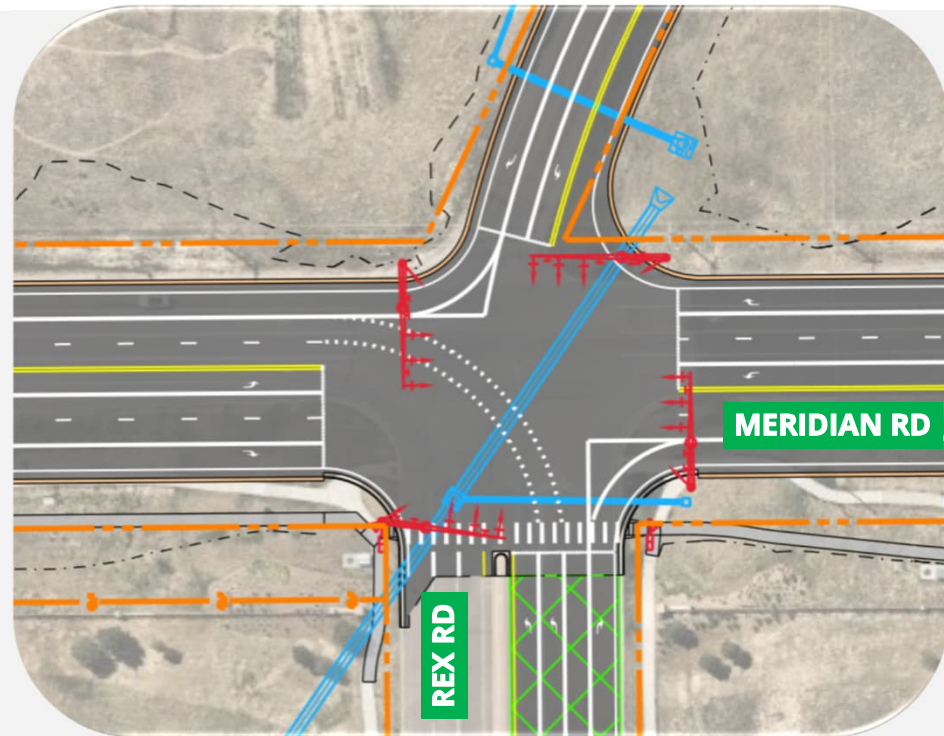




PROJECT OVERVIEW

Corridor Upgrades

- Drainage
- Roadside safety
- Additional travel lanes
- Traffic signal
- Pedestrian crossing





PROJECT OVERVIEW

Funding

- The project carries an estimated cost of \$8.5 million, covering construction and utility relocation expenses, which is sourced from El Paso County's Road Impact Fee funds.
- These funds originate from fees assessed to property owners in unincorporated El Paso County upon receiving approval for new development contributing to increased traffic.
- The Road Impact Fee Program commenced on December 1, 2012 and bases the amount of the fee on the type of use established with a new development.



PROJECT BENEFITS

- Enhances overall safety - improving existing intersection and stopping sight distance issues by flattening out some hills adjacent to the intersection as well as improving the shoulders and roadside ditches in this vicinity.
- Increases capacity not only at intersections but also along the entire roadway, allowing for smoother traffic flow. Adding through lanes on Meridian and turn lanes on Rex to help improve traffic operations.
- Improve traffic flow and reduce delay experienced by drivers on Rex Road.





SIGHT DISTANCE CORRECTIONS

Stopping sight distance deficiencies

- Terrain blocks driver's view of objects/vehicles in roadway
- Drivers need nearly 500 feet to stop for obstructions at 55mph
- The project will soften hills and raise low points

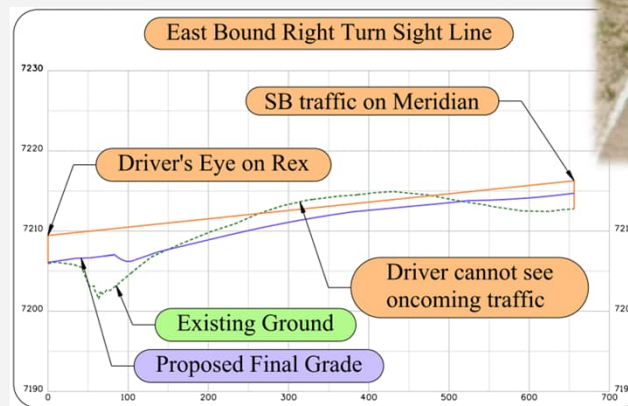
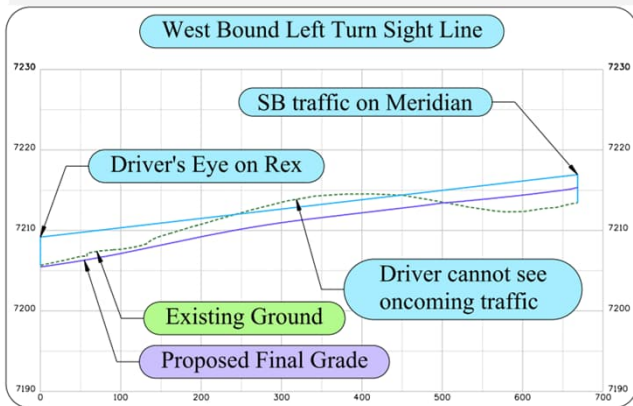




SIGHT DISTANCE CORRECTIONS

Intersection sight distance deficiencies

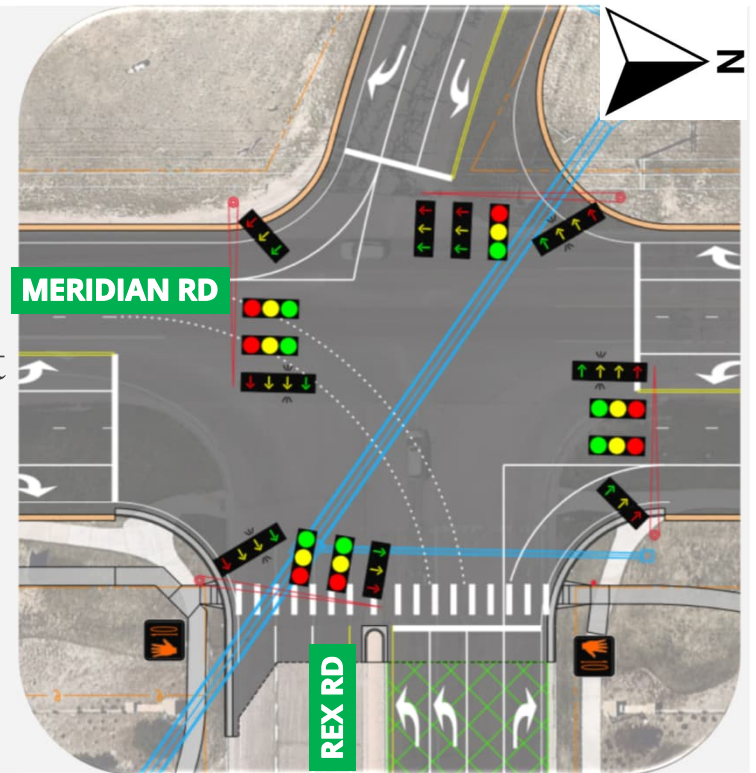
- Turning from Rex Rd to Southbound Meridian Rd
- Terrain blocks driver's view of oncoming traffic
- Soften hills and raise low points





TRAFFIC SIGNAL

- Traffic Study followed County criteria
- Traffic counts from 2019 and 2023
 - Existing condition is stop-control on Rex Rd
- New lane configuration for each direction
 - Meridian Rd – 2 thru lanes & dedicated right and left turn lanes
 - Rex Rd – 1 thru lanes & dedicated right and left turn lanes
- Signal configuration
 - Includes ADA signal for east Rex Rd





CONSTRUCTION

- Begin early 2024 and complete late 2025
- Proposed Phase 1
 - Traffic remains on existing pavement
 - Meridian Road
 - Build new northbound lanes
 - Rex Road
 - Build temporary westbound lanes

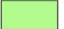





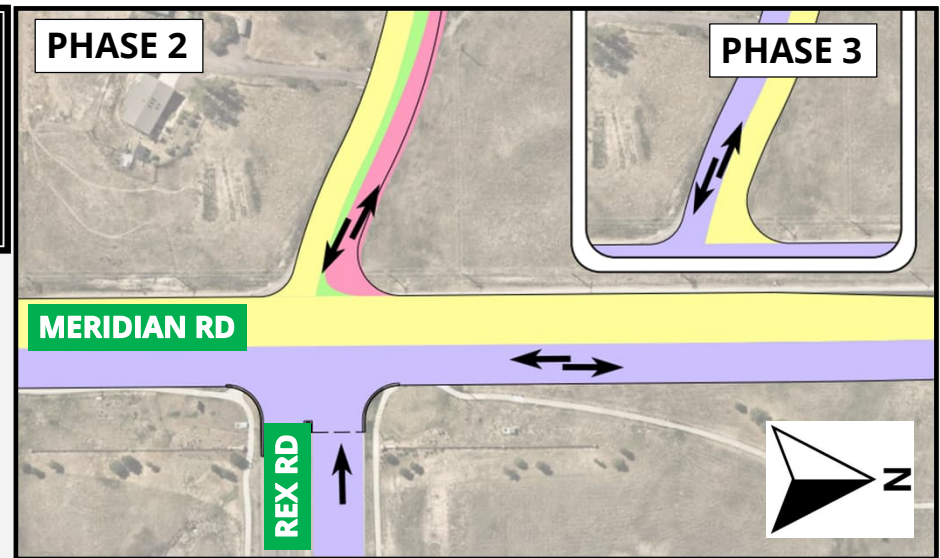
LEGEND:	
	EXISTING PAVEMENT
	TEMPORARY PAVEMENT
	FINAL PAVEMENT
	UNDER CONSTRUCTION



CONSTRUCTION

- Proposed Phase 2
 - Meridian Road
 - Shift traffic to new northbound lanes
 - Build new southbound lanes and re-build driveways
 - Rex Road
 - Shift traffic to temporary westbound lanes
 - Build new eastbound lanes and re-build driveways

LEGEND:	
	EXISTING PAVEMENT
	TEMPORARY PAVEMENT
	FINAL PAVEMENT
	UNDER CONSTRUCTION



- Proposed Phase 3 for Rex Road
 - Shift traffic to new eastbound lanes
 - Build new westbound lanes



Q&A PROTOCOLS

- If you have a question or comment, please raise your hand.
- So that everyone can hear, we will bring the microphone to you, alternating between sides of the room.
- State your name; keep your question/input brief so that everyone has an opportunity to participate.
- To enable as much input as possible within the time we have, if something has already been said, please don't repeat it.
- As there may be different opinions, listen & hear with **mutual respect**.
- Use the Comment Forms to submit additional input or questions.



NEXT STEPS

All comment forms and input from this meeting will be collected and provided to the County.

Tonight's PowerPoint presentation and displays are available on the County project webpage at: <https://www.elpasoco.com/>



Additional information and project schedule will be communicated to the public through the e-newsletter. Please provide your email address in the lobby at the sign-in table.



THANK YOU!

Stay Informed:

To receive project update e-newsletters:

send an email to:

RexMeridianImprovements@gmail.com

Project Phone: 719-428-0208

Project Website: <https://www.elpasoco.com/>





Omar Lopez
El Paso County Project Manager
OmarLopez@ElPasoCo.com

Wes Suchsland
AECOM – Consultant Project Manager
Wes.Suchsland@AECOM.com