

Johnston

XTension

ENGINEERS

DISQUALIFYING

CIRCUMVENTIONAL

Regrouping

Hundredth

Compartmentalization

BOLSTERED

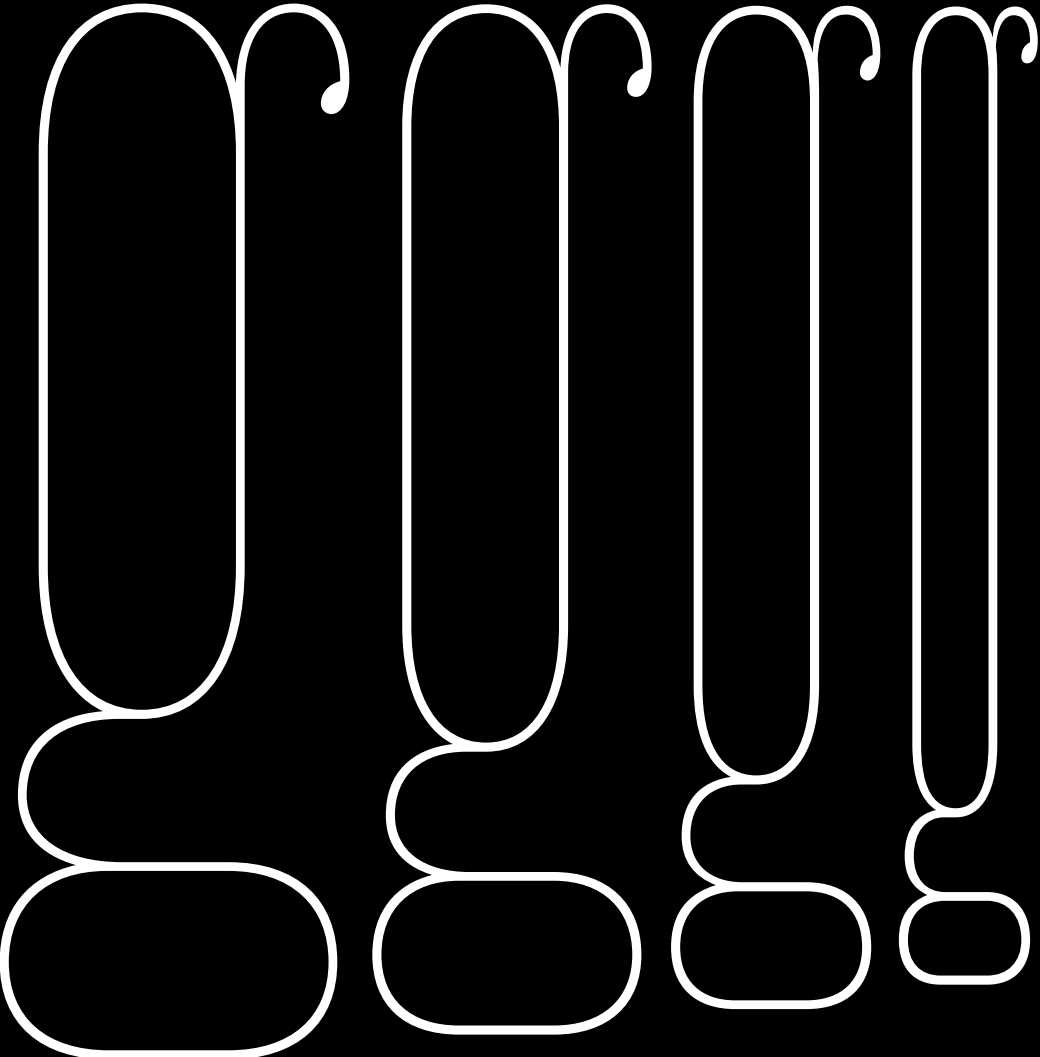
MASTERPIECES

QUANTUM SCIENCE

Greasepaint

Mathematically

Electrocardiographic



Anthropomorphizing

Buckminsterfullerene

Spectrophotometers

Disappointingly

Postmodernism

Longue-twisters

Sensationalistic

Uninterpretable

Mathematicians

Forward Looking

Innovations

Well intentioned

Embellishments

abcdefghijklmnopqrstuvwxyz

ABCDEFGHIJKLMNOPQRSTUVWXYZ

Wischiefmakin

Comment

Wordprocessing

Advertisements

Nonjettionable

Nonconformists

Phototypesetter

Indenestimator

Antykwę wymyślono praktycznie
czasach, kiedy nastąpiło upowsze
druku w Europie, i choć druki ksy
formy drukowej rzeźbionej w drev
wsze druki złożone ruchomą czci
z Biblią Gutenberga) były drukow
to jednak również pierwszymo anty

Z POCZĄTKU WOBEC ANTYKW, CZ
WZOROWANYCH NA PISMACH Z
EPOK, STOSOWANO OKREŚLENIE
ANTIQUA, POPRZEZ PORÓWNANIE
ROZPOWSZECZONEGO WÓWCZ
GOTYCKIEGO, ZWANEGO LITTE
ODRĘCZNE PISMO GOTYCKIE WYDA

KHI SẮP CHỮ, NHỮNG NGƯỜI THỜ CÁT CÁC

TRONG MỘT CÁI KÈ, NHỮNG CHỮ NÀO THỜ

NHẤT THÌ CÁT Ở KÈ DƯỚI "LOWERCASE" ĐỂ

KHI ĐÓ, CÁC CHỮ IN HOA THÌ ĐƯỢC CÁT TRỞ

NHỮNG KÈ TRÊN "UPPER CASE". TỪ NÀY BẮC

PHÁP, CÁC HỘP KIM ĐƯỢC CHỮ IN PHẢI ĐƯỢC

HOẶC KIM NÓNG QUẢ Ở CÁC NHẢ MẮC TÍNH

Dangerously falling toxicity
Dangerously falling toxicity

Square terminals and dots
font-feature-settings: 'ss01'

Rambling banana parade
Rambling banana parade

Tailed R and a
font-feature-settings: 'ss02'

EFFECTIVE FESTIVITIES
EFFECTIVE FESTIVITIES

Simplified E and F
font-feature-settings: 'ss03'

Monumental Minimalism
Monumental Minimalism

Simplified h, n, m
font-feature-settings: 'ss04'

Fettuccine & Mostaccioli
Fettuccine & Mostaccioli

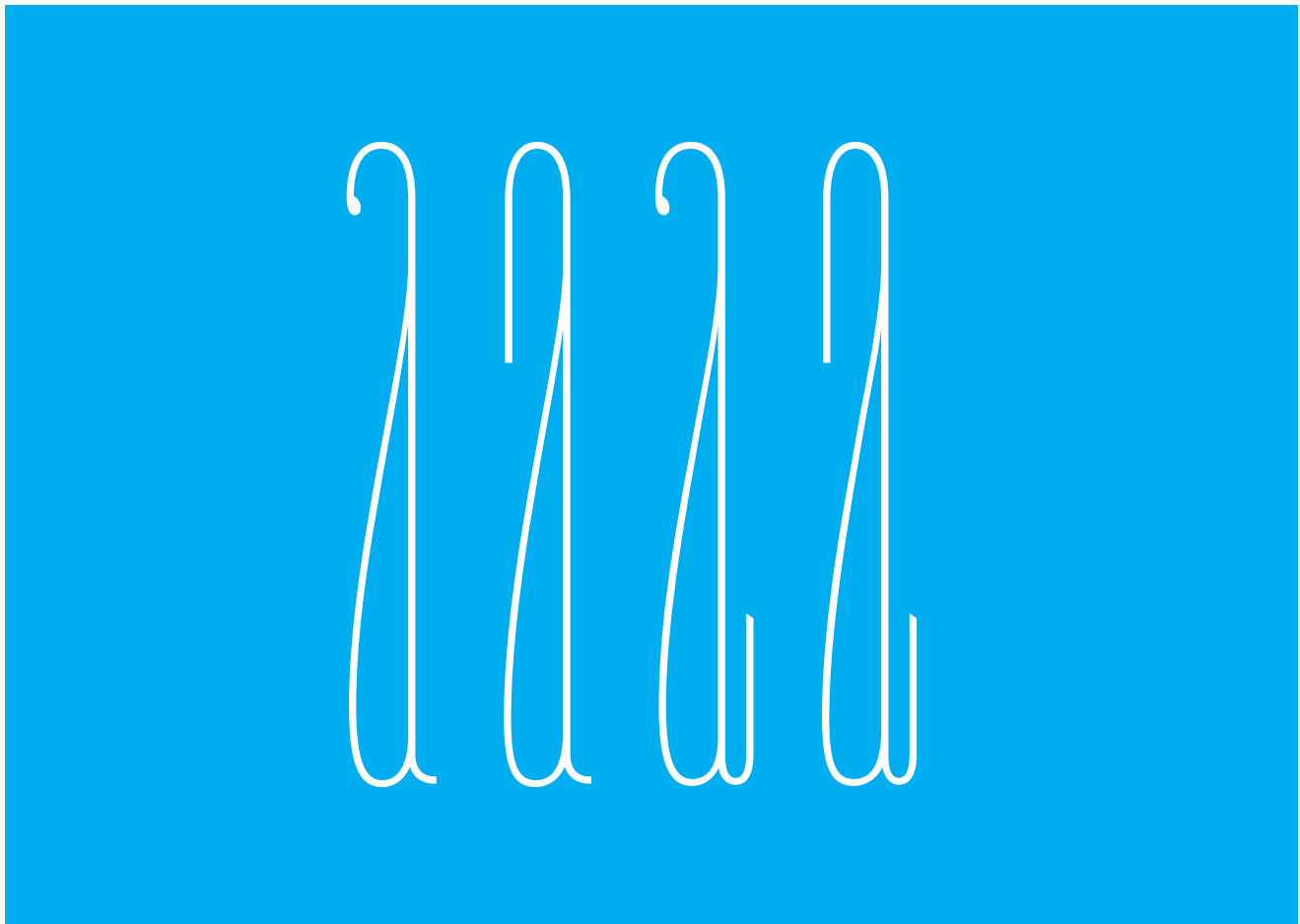
Simplified c
font-feature-settings: 'ss05'

Fettuccine & Mostaccioli
Fettuccine & Mostaccioli

Simplified t
font-feature-settings: 'ss06'

\$79,772,197 & \$17,496,274
\$79,772,197 & \$17,496,274

Simplified 7
font-feature-settings: 'ss07'



Job Clarendon is a bracketed slab serif based on the Condensed Clarendons of nineteenth century British and American poster typography. Under the guidance of Clarendon-enthusiast Bethany Heck, I drew this Hairline style far thinner than any of its Victorian predecessors, and we hope this is only the beginning. Job Clarendon's simple and confident forms make it feel industrial-strength even at the thinnest possible weight, while its ball terminals lend it a touch of gracefulness.

David Jonathan Ross draws letters of all shapes and sizes for custom and retail typeface designs. A native of L.A., he began drawing type at Hampshire College, continued at The Font Bureau, and now publishes visually imaginative and technically advanced designs at his own foundry and through the Font of the Month Club.

Bethany Heck is a multi-disciplinary designer, writer, and assembler of stellar teams. She's devoted to advancing typographic practice across all design disciplines and runs the Font Review Journal, a project devoted to examining the intersection of typeface design and the way type is used by designers.

Supported Languages include:

Afrikaans, Albanian, Alsatian, Basque, Bislama, Breton, Catalan, Chamorro, Croatian, Czech, Danish, Dutch, English, Estonian, Faroese, Finnish, Flemish, Franco-Provençal, French, Frisian, Friulian, Galician, German, Greenlandic, Hungarian, Icelandic, Indonesian, Irish, Italian, Kurdish (Latin), Ladin, Latin, Latvian, Lithuanian, Luxembourgish, Malay, Manx Gaelic, Moldovan, Norwegian (Bokmål, Nynorsk), Occitan, Polish, Portuguese, Rhaeto-Romance, Romanian, Romansh, Sami (Inari, Lule, Northern, Skolt, Southern), Scottish Gaelic, Slovak, Sorbian, Slovenian, Spanish, Swahili, Swedish, Tagalog, Turkish, Uzbek (Latin), Vietnamese, Walloon, Welsh.

DJR

P.O. Box 461
Conway, MA 01341
USA

www.djr.com
david@djr.com
+1 339.224.7687