



Influence and optimization of the electrodes position in a piezoelectric energy harvesting flag

Miguel Piñeirua, Olivier Doaré, Sébastien Michelin

► **To cite this version:**

Miguel Piñeirua, Olivier Doaré, Sébastien Michelin. Influence and optimization of the electrodes position in a piezoelectric energy harvesting flag. *Journal of Sound and Vibration*, Elsevier, 2015, 346, pp.200-215. <10.1016/j.jsv.2015.01.010>. <hal-01136838>

HAL Id: hal-01136838

<https://hal-ensta.archives-ouvertes.fr/hal-01136838>

Submitted on 29 Mar 2015

HAL is a multi-disciplinary open access archive for the deposit and dissemination of scientific research documents, whether they are published or not. The documents may come from teaching and research institutions in France or abroad, or from public or private research centers.

L'archive ouverte pluridisciplinaire **HAL**, est destinée au dépôt et à la diffusion de documents scientifiques de niveau recherche, publiés ou non, émanant des établissements d'enseignement et de recherche français ou étrangers, des laboratoires publics ou privés.

Influence and optimization of the electrodes position in a piezoelectric energy harvesting flag

Miguel Piñeirua* and Olivier Doaré†

Unité de Mécanique (UME), ENSTA-Paristech, 91761 Palaiseau, France

Sébastien Michelin‡

LadHyX-Département de Mécanique, École Polytechnique, Route de Saclay, 91128 Palaiseau, France

Fluttering piezoelectric plates may harvest energy from a fluid flow by converting the plate's mechanical deformation into electric energy in an output circuit. This work focuses on the influence of the arrangement of the piezoelectric electrodes along the plate's surface on the energy harvesting efficiency of the system, using a combination of experiments and numerical simulations. A weakly non-linear model of a plate in axial flow, equipped with a discrete number of piezoelectric patches is derived and confronted to experimental results. Numerical simulations are then used to optimize the position and dimensions of the piezoelectric electrodes. These optimal configurations can be understood physically in the limit of small and large electromechanical coupling.

arXiv:1501.04303v1 [physics.flu-dyn] 18 Jan 2015

* miguel.pineirua@ensta-paristech.fr

† olivier.doare@ensta-paristech.fr

‡ sebastien.michelin@ladhyx.polytechnique

I. INTRODUCTION

In recent years, a significant research effort has been dedicated to the development of new flow energy-harvesting systems and the characterization of their efficiency. Many of such systems are based on flow-induced vibrations of structures, such as vortex-induced vibrations [1–3], flutter of wing profiles [4–6], of cylinders in axial flows [7, 8], or flags [9–12]. The present work focuses on the latter, and considers a flag covered with piezoelectric patches that convert mechanical deformation into electric charge transfer inside an output circuit.

In this article the term *flag* refers in fact to a clamped-free plate in an axial flow. It is well-established that such structure can undergo strong self-sustained oscillations once a critical flow velocity is overpassed (see the recent review by Ref. [13] and references therein). These oscillations originate from an instability of the equilibrium position, resulting from the interaction of the flow forces with the solid’s inertia and rigidity. This instability can be predicted from the linearized dynamics equations and different methods and models have been proposed depending on the aspect ratio of the flag, ranging from two-dimensional models (large span, [14, 15]) to slender body models (short span, [16]). The general case of a three dimensional fluid flow around a rectangular plate showed the limits of applicability of both models [17, 18]. Linear analysis is however not able to predict the amplitude of flapping in the saturated regime, hence it is necessary to consider the nonlinear dynamics of the flag to be able to determine how much energy can be harvested. Beyond full numerical simulations of the coupled fluid-solid problems, simplified fluid-solid nonlinear models have been proposed in the limit of two-dimensional flows [19, 20] or slender body problems [8, 21].

Piezoelectric patches have traditionally been studied to couple structural mechanics to electrical circuits in the context of passive damping of structural vibrations [22], of active control of vibrations [23] and of course energy harvesting [24–27]. The use of a piezoelectric flag to convert the kinetic energy of a flow was initially introduced by Ref. [1], to produce energy from the flapping of a flexible membrane forced by the wake of an upstream obstacle. In the last five years, several experimental, numerical and theoretical studies have been conducted to study the possibility to exploit the flutter instability itself using piezoelectric plates [10, 11, 28, 29]. In these works, the plate was either entirely or partially covered by one piezoelectric pair [28, 29], or completely covered by a large amount of small piezoelectric elements, so that a continuous model for a homogenous plate can be considered [10, 11]. In the latter case and for purely resistive output circuits, it was shown that the maximum efficiency is obtained for large mass ratio when the timescale of the electrical circuit is equal to the fluid-solid instability timescale [11]. For practical applications, however, only a finite number of piezoelectric elements can realistically be used. The goal of the present article is therefore to provide some understanding on the impact of such a discrete coverage on the dynamics and performance of the system, a critical question that has remained so far unanswered.

In contrast with simplified representations of the energy harvesting process (e.g. pure damping, [30]), such an approach provides a fully-coupled description of the fluid-solid-electric problem, taking into account both the transfer of energy from the solid motion to the output circuit and the feedback effect of the piezoelectric patches on the flag’s dynamics. The nonlinear dynamics of the flag (even in the absence of any piezoelectric coupling) exhibit strong inhomogeneities of the local deformation and motion along the plate: near the clamped leading edge, the flag has little displacement but significant curvature, while near the free trailing edge, the flag has zero curvature but undergoes large displacements. Local stretching and compression of the piezoelectric patches resulting from the flag deformation are responsible for the charge transfer in the output circuit; the location along the structure of the device converting mechanical to electrical energy is therefore expected to strongly affect the efficiency of the system. A similar question was recently addressed in Refs. [7, 8] in the case of a pure damping model.

The present work focuses on the optimization of the distribution of a small set of piezoelectric elements (one, two or three pairs) positioned on a plate in an axial flow. In section II, the physical model and equations are presented for the fluid-solid-electric system with a finite number of discrete piezoelectric patches. A method of simulation based on the weakly nonlinear form of these equations is presented that is appropriate to obtain the nonlinear dynamics near the instability threshold. The influence of the number of piezoelectric elements on the stability of the system is investigated in section III. In section IV, the impact of this arrangement on the nonlinear dynamics and energy harvesting efficiency is studied using experiments and numerical simulations. Finally, a parametric numerical study is performed to determine the optimal arrangements in the case of one, two or three piezoelectric elements.

II. PHYSICAL MODEL

The system considered in this work consists of an elastic flexible plate of length L and width H immersed in an axial flow of uniform density ρ and velocity U_∞ . The plate is inextensible and clamped at its leading edge. For simplicity only purely two-dimensional motions of the plate are considered. The plate’s geometry is therefore completely determined by the local orientation of the plate with respect to the flow, $\theta(S, T)$, where S is the curvilinear coordinate along the plate and T is time. A finite number N_p of piezoelectric electrodes of length L_{pi} and width H are attached on each

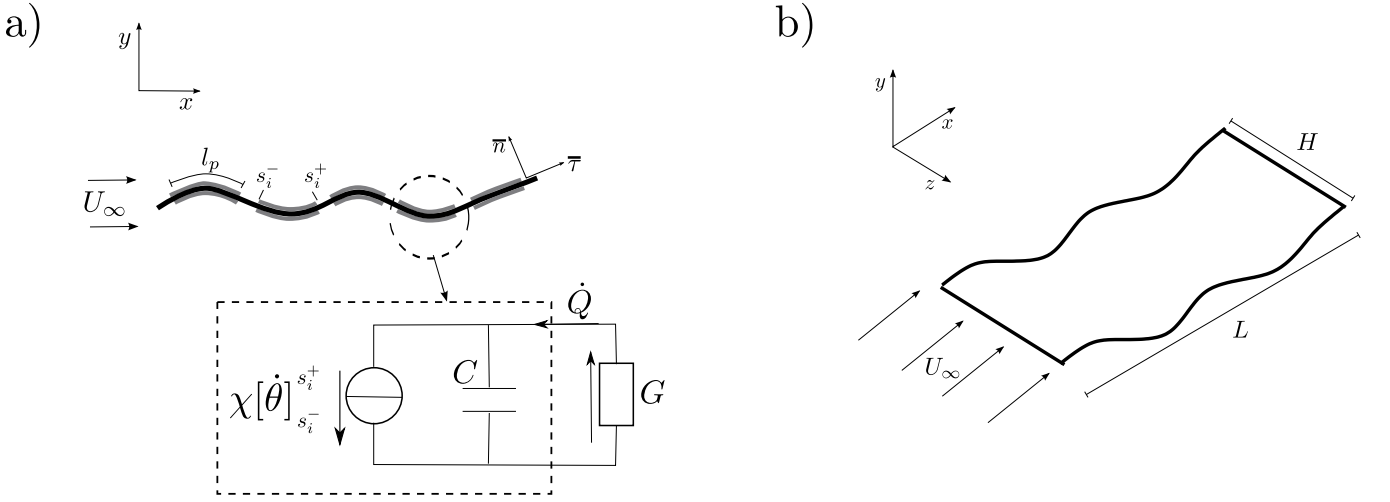


FIG. 1. (a) Two dimensional flapping of a flexible plate covered by pairs of piezoelectric patches. (b) Flexible plate flapping in uniform axial flow.

side of the plate. For each piezoelectric patch pair, the negative electrodes are shunted across the plate while their positive electrodes are connected to an external circuit. The charge (per unit length in the streamwise direction) in each piezo pair is given by [10]:

$$Q_i = \frac{\chi}{L_{pi}} [\theta]_{S_i^-}^{S_i^+} + CV_i, \quad (1)$$

with V_i the voltage between the positive electrodes of the i th piezo pair whose left and right edges are positioned at S_i^- and S_i^+ respectively. $C = C_i/L_{pi}$ is the equivalent capacitance per unit length of the piezo pair and χ is the mechanical/piezoelectrical conversion factor of the piezoelectric material. Considering that each electrode is connected to a purely resistive circuit, Ohm's law leads to:

$$\frac{\partial Q_i}{\partial T} + GV_i = 0, \quad (2)$$

where $G = G_i/L_{pi} = 1/R_i L_{pi}$ is the conductivity per unit length of the harvesting circuit, with R_i the circuit's resistance.

The voltage V_i between the positive electrodes also generates an internal torque in the piezoelectric patches, and thus on the flexible plate, so that the total internal torque in the plate and piezoelectric patches assembly is obtained as

$$M = B \frac{\partial \theta}{\partial S} - \chi \sum_{i=1}^{N_p} V_i F_i, \quad (3)$$

where B is the flexural rigidity, which depends on the respective thickness, Young's modulus and Poisson's ratio of the two constitutive materials [10]. In equation (3), $F_i(S)$ is the polarization function of the i th patch. In the present approach, $F_i(S) = H_s(S - S_i^-) - H_s(S - S_i^+)$, with H_s the Heaviside step function. The conservation of momentum then leads to [11]:

$$\mu \frac{\partial^2 \mathbf{X}}{\partial T^2} = \frac{\partial}{\partial S} \left(F_t \boldsymbol{\tau} - \frac{\partial}{\partial S} \left(B \frac{\partial \theta}{\partial S} - \chi \sum_{i=1}^{N_p} V_i F_i \right) \mathbf{n} \right) - P \mathbf{n}, \quad (4)$$

where $\mathbf{X}(S, T)$ is the local plate position and μ is the mass per unit length of the assembly. F_t is the internal tension in the plate that enforces inextensibility and P is the pressure force density exerted by the surrounding fluid over the plate. In Eq. (4), \mathbf{n} and $\boldsymbol{\tau}$ are the unit normal and tangent vectors to the plate (see Figure 1). Following previous works on flapping flag modeling [8, 21], P is decomposed into a reactive part P_{reac} accounting for potential flow effects (e.g. added mass), corrected by a resistive part P_{res} accounting for the form drag on the plate resulting from lateral

flow separation:

$$P = P_{\text{reac}} + P_{\text{res}} = m_a \rho H^2 \left(\dot{w} - (wu)' + \frac{1}{2} w^2 \kappa \right) + \frac{1}{2} \rho C_d H |w| w, \quad (5)$$

where m_a is the added mass coefficient of the transverse section ($m_a = \pi/4$ for a rectangular plate [31]), and $C_d = 1.8$ the drag coefficient [32]. w and u are respectively the normal and longitudinal components of the plate's velocity relative to the fluid flow, such that $\dot{\mathbf{X}} - U_\infty \mathbf{e}_x = u \boldsymbol{\tau} + w \mathbf{n}$, with \mathbf{e}_x the unitary vector in the x direction.

In the present approach, it is assumed that the electrode does not affect the density and bending rigidity of the sandwich plate that are considered homogeneous along the assembly (see [33] for a study on the passive damping of vibrating beams including this effect). Also, in the approach followed in this work, P_{res} accounts for the effect of the lateral flow detachment in the form of a drag. Flow detachment from the trailing edge and wake dynamics are only accounted through the reactive term which models the advection of added fluid momentum (see Ref. [34] for more details). Other models exist that consider the influence of an unsteady wake [19, 35].

A. Non-dimensional equations

Using L , L/U_∞ , $U_\infty \sqrt{\mu/c}$ and $U_\infty \sqrt{\mu c}$ as characteristic length, time, voltage and charge respectively, equations (1)–(4) become in non-dimensional form:

$$q_i = v_i + \frac{\alpha}{U^* \gamma_i} [\theta]_{s_i^-}^{s_i^+}, \quad (6)$$

$$\beta \frac{\partial q_i}{\partial t} + v_i = 0, \quad (7)$$

$$\begin{aligned} \frac{\partial^2 \mathbf{x}}{\partial t^2} &= \frac{\partial}{\partial s} (f_\tau \boldsymbol{\tau}) - \frac{1}{U^{*2}} \frac{\partial^2}{\partial s^2} \left(\frac{\partial \theta}{\partial s} \mathbf{n} \right) - (M^* p_{\text{res}} + M^* H^* m_a p_{\text{reac}}) \mathbf{n} \\ &+ \frac{\alpha}{U^*} \sum_i v_i [\delta'(s - s_i^-) - \delta'(s - s_i^+)] \mathbf{n}, \end{aligned} \quad (8)$$

with clamped-free boundary conditions. The problem is characterized by the following non-dimensional parameters:

$$\text{- the non dimensional velocity } U^* = LU_\infty \sqrt{\frac{\mu}{B}}, \quad (9)$$

$$\text{- the electro-mechanical coupling factor } \alpha = \frac{\chi}{\sqrt{BC}}, \quad (10)$$

$$\text{- the fluid-solid inertial ratio } M^* = \frac{\rho LH}{\mu}, \quad (11)$$

$$\text{- the non dimensional plate span } H^* = \frac{H}{L}, \quad (12)$$

$$\text{- the non dimensional electrode length } \gamma_i = \frac{L_{pi}}{L}, \quad (13)$$

$$\text{- the tuning coefficient of the fluid-solid and electric systems } \beta = \frac{U_\infty C}{LG}. \quad (14)$$

B. Weakly non-linear form of the equations

Equation (8) is projected onto the x and y directions in order to obtain two equations for $x(s, t)$ and $y(s, t)$ respectively. The horizontal projection is used to eliminate the tension term f_τ from the y projection. Finally, x and its derivatives are eliminated using the inextensibility condition. Keeping terms up to $O(y^3)$ one obtains a weakly non-linear equation for $y(s, t)$ (see also Ref. [21] for the case of a non-piezoelectric plate):

$$L(y) + f_m(y) + \frac{1}{U^{*2}} f_B(y) - \frac{\alpha}{U^*} f_\chi(y, v) + M^* f_{\text{res}}(y) + M^* H^* m_a f_{\text{reac}}(y) = 0, \quad (15)$$

where

$$L(y) = \ddot{y} + \frac{1}{U^*2} y^{(4)} - \frac{\alpha}{U^*} \sum_i v_i (\delta'(s - s_i^-) - \delta'(s - s_i^+)) + M^* H^* (y'' + 2\dot{y}' + \dot{y}), \quad (16)$$

$$f_m(y) = y' \int_0^s (\dot{y}'^2 + y' \ddot{y}') ds - y'' \int_s^1 \int_0^s (\dot{y}'^2 + y' \ddot{y}') ds ds', \quad (17)$$

$$f_B(y) = 4y' y'' y''' + y'^2 y^{(4)} + y''^3, \quad (18)$$

$$f_\chi(y, v_1..v_{N_p}) = \frac{1}{2} y'^2 \sum_i v_i (\delta'(s - s_i^-) - \delta'(s - s_i^+)) + y' y'' \sum_i v_i (\delta(s - s_i^-) - \delta(s - s_i^+)), \quad (19)$$

$$f_{\text{res}}(y) = \frac{1}{2} C_D |y' + \dot{y}| (y' + \dot{y}), \quad (20)$$

$$\begin{aligned} f_{\text{reac}}(y) = & -\frac{1}{2} y'' y'^2 + \dot{y}' y'^2 - 3y'' y' \dot{y}' - 2\dot{y}' y' \dot{y}' - \frac{1}{2} y'' \dot{y}'^2 + y' \int_0^s (\dot{y}'^2 + y' \ddot{y}') ds \\ & + 2(y'' + \dot{y}') \int_0^s \dot{y}' y' ds - y'' \int_s^1 y' (y'' + 2\dot{y}' + \ddot{y}) ds. \end{aligned} \quad (21)$$

Equation (16) corresponds to the linearized dynamics while Equations (17)–(21) correspond to nonlinearities related to inertia, stiffness, piezoelectric coupling, resistive and reactive flow effects, respectively.

C. Numerical method

A Galerkin decomposition is used to solve Equation (15): the vertical displacement y is expanded as a superposition of clamped-free beam eigenmodes $\phi_p(s)$,

$$y(s, t) = \sum_{p=1}^{\infty} X_p(t) \phi_p(s). \quad (22)$$

Next, equation (15) is projected on the same set of eigenmodes. Details of the Galerkin projection can be found in A. After truncation to N linear modes, the resulting coupled system of equations is integrated numerically using a semi-implicit step-adaptive fourth order Runge-Kutta method.

D. Harvested energy and harvesting efficiency

Once the dynamics of the piezoelectric flag is obtained using the method above and a limit-cycle oscillation is reached, the total energy harvested by the system is computed as the energy dissipated in all the resistive circuits. In dimensional form, this reads as

$$P_e = \left\langle \sum_{i=1}^{N_p} G_i V_i^2 \right\rangle, \quad (23)$$

with $\langle \cdot \rangle$ the temporal average over one oscillation period. The harvesting efficiency $\eta = P_e/P_f$ is then computed as the fraction of the fluid kinetic energy flux P_f through the vertical cross-section occupied by the flag that is actually harvested and dissipated in the output circuits. Using the non-dimensional variables defined above, this can be written as

$$\eta = \frac{1}{M^* \beta A^*} \left\langle \sum_{i=1}^{N_p} \gamma_i v_i^2 \right\rangle, \quad (24)$$

with $A^* = A/L$ and A the flapping amplitude of the flag.

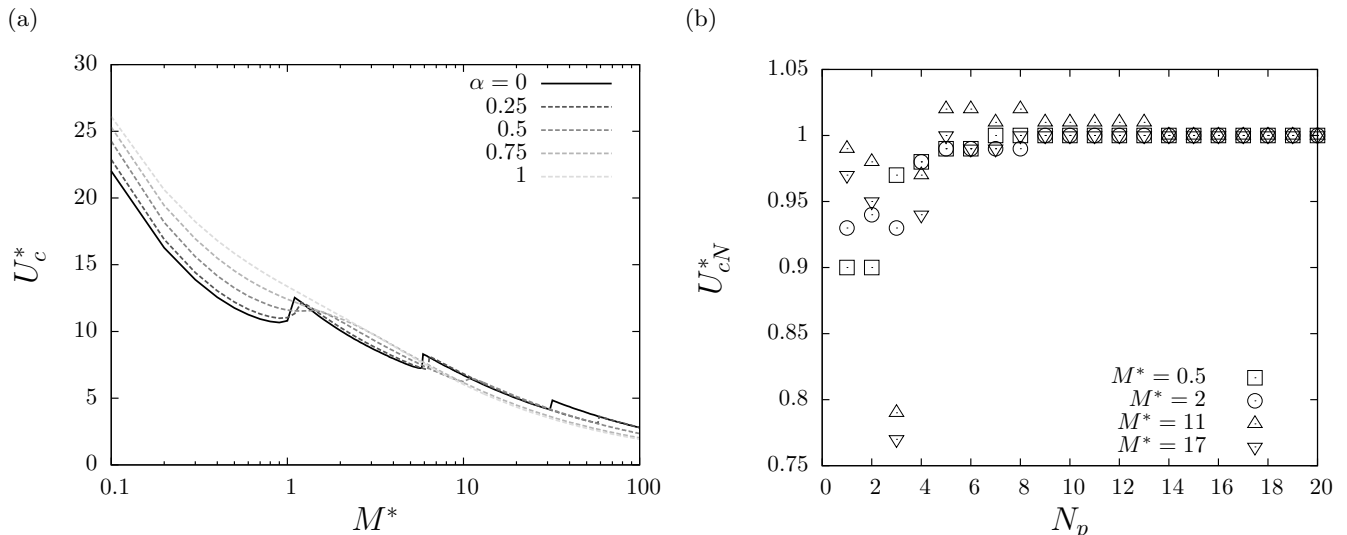


FIG. 2. (a) : Evolution of the stability threshold as a function of M^* for different values of the coupling factor α , $\beta = 1 = cst$, $N_p = 100$. (b) : Impact of the number of electrodes on the critical stability threshold. Values of U_c^* are normalized using the critical value corresponding to $N_p = 100$.

III. FLAPPING INSTABILITY : LINEAR ANALYSIS

As a first validation of our model, we investigate the effect of the piezoelectric arrangement of the flag on its stability for a continuous coverage ($s_{i+1}^- = s_i^+$), and a large number of piezoelectric patches. Beyond a critical value U_c^* of the flow velocity the system becomes unstable to flutter [13]. Figure 2 (left) shows the critical velocity U_c^* as a function of the mass ratio M^* for different values of the coupling coefficient and a large number of small piezoelectric patches ($N_p = 100$). Without piezoelectric coupling, U_c^* is a decreasing function of M^* . Cusps in the curve represent a switch in the mode becoming unstable at the lowest flow velocity (see for example [17]). These results match that obtained in Ref. [11] using a continuous model, thus indicating that for a large amount of piezoelectric patches, the present discrete model indeed converges to the continuous framework.

The electro-mechanical coupling also clearly influences the stability threshold of the flag. In the coupled case ($\alpha \neq 0$) and for small values of M^* , the damping induced by the electro-mechanical coupling increases the critical velocity U_c^* . This effect is more important as the coupling factor α is increased. However, for high values of M^* , the electro-mechanical coupling has a destabilizing effect, which was interpreted in Ref. [10] in terms of negative energy waves present on the non-dissipative flag [36–38].

Several previous studies have focused on the limit of the continuous coverage of the plate by infinitesimal patches ($N_p \gg 1$, [10, 11, 39]). The discrete approach considered here allows us to investigate the convergence of the results with N_p and the applicability of the continuous approach to experimental situations where a finite and often small number of patch pairs is considered. Figure 2 (right) indeed shows a rapid convergence of the critical velocity for $N_p > 12$, beyond which the results of the continuous model are recovered [10, 11, 39]. Moreover, it also shows that using fewer patches can significantly modify the stability threshold, positively or negatively, which motivates the present study on a finite number of piezoelectric pairs.

The rapid convergence of the results beyond $N_p \approx 10$ can be understood as follows: for the values of the mass ratio considered, the dominant unstable mode is of low order resulting in typical wavelengths greater than half a flag length. For a large enough number of patches, the patch length is small enough that the entire mode structure is well captured and the discrete nature of the piezoelectric coverage has no influence.

IV. OPTIMIZATION OF THE ELECTRODES' POSITION

During its self-sustained flapping motion, the flag undergoes complex and non-uniform deformations. Electric charge transfer between the patches' electrodes is intimately linked to the local deformation of the flag. An important challenge for maximizing the amount of energy harvested by such a device therefore lies in the correct positioning of the electrodes. When the electromechanical coupling is large, the piezoelectric patches can significantly modify the flag's dynamics resulting in a non-trivial optimization process.

In order to address this question, we first present a set of preliminary experiments exploring the impact of electrode size and position on the global energy harvesting efficiency of the system. Experimental results are then compared to numerical simulations based on the physical model presented in section II. In the last part of this section, a parametric study is performed based on numerical simulations using more complex geometrical configurations, to identify optimal positioning of the electrodes.

A. Experimental study of the role of electrode size and position

The aim of the experiments described below is to obtain some preliminary evidence of the impact of size and position of the electrodes on the harvested energy. For this purpose we have focused on a simple configuration consisting of a flexible piezo-electric plate covered by a single pair of electrodes of variable length and position, immersed in an axial wind flow of speed U_∞ (figure 3-a). Two different experimental configurations are considered (see figure 3-b for a graphical description of the experiments):

- *Experiment 1*: the length of the electrode L_p is varied while one of its extremities is fixed at the clamped edge of the plate,
- *Experiment 2*: the length of the electrode is also varied but with one if its extremities fixed to the free edge of the plate.

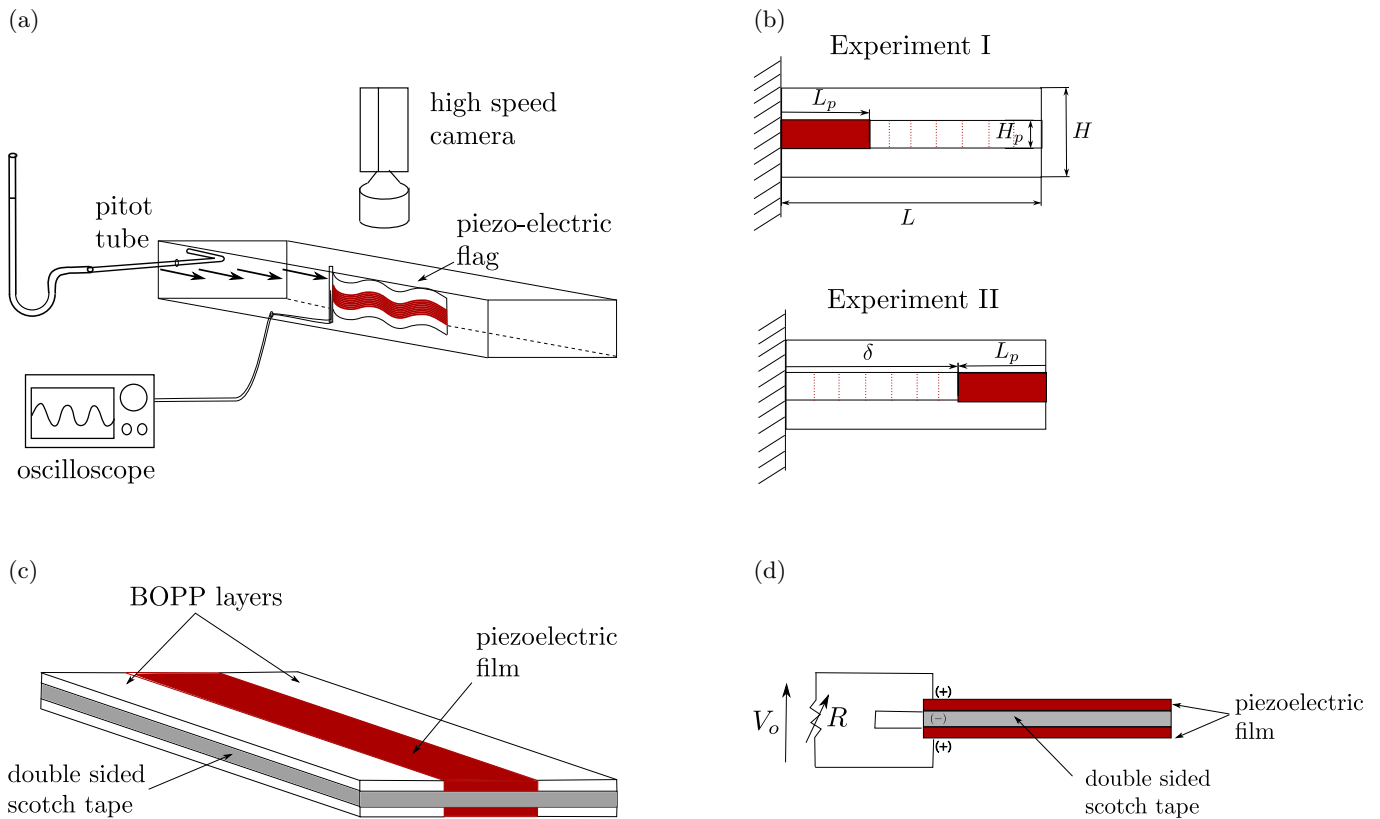


FIG. 3. (a) Description of the experimental setup. (b) Graphic representation of the electrode size and distribution for experiments 1 and 2. (c) Schematic of the multilayer composition of the piezoelectric flag. (d) Connection diagram of the harvesting circuit.

In these experiments, the plates include a center core consisting of a double sided adhesive tape of length $L = 12$ cm, width $H = 2.5$ cm and thickness $h_s = 100 \mu\text{m}$. Both sides of the tape are partially covered by a piezoelectric PVDF film of the length L and width $H_p = 0.3H$, with its negative polarity facing inwards. The thickness of the piezoelectric films is $h_p = 40 \mu\text{m}$ for experiment 1 and $h_p = 50 \mu\text{m}$ for experiment 2. The remaining free surface at both sides of the scotch tape is covered by a layer of *Innova* biaxially oriented polypropylene (BOPP) film of exactly the same thickness as that of the piezoelectric film. Figure 3-c shows a schematic view of the plate composition. The

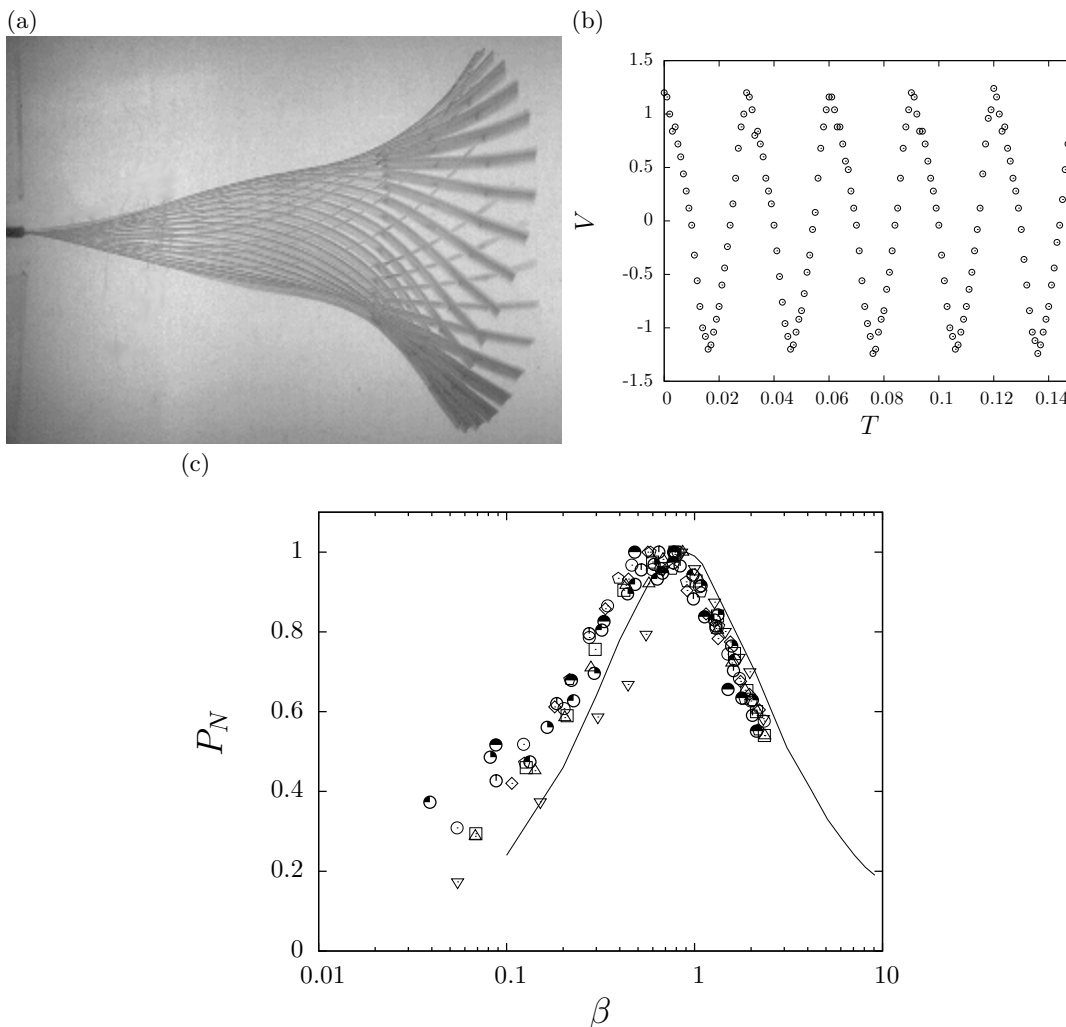


FIG. 4. Top left: Image sequence of the flag deformation over one oscillation period. Top right : Voltage signal generated by the piezoelectric patches during a typical experiment. Bottom : Normalized dissipated power P_N as a function of the tuning parameter β . Data corresponds to experiment 1, different symbols correspond to different values of L_p . The normalized power P_N is calculated as $P_N = P/P_{max}$ for each given value of L_p . The solid line corresponds to a numerical simulation using $L_p = 1$.

piezoelectric PVDF films are covered with an external Cr/Au which serves as the electrode. In both experiments this Cr/Au layer is sectioned in order to adjust the desired value of δ and L_p . The objective of covering only one third of the width of the plate with piezoelectric film is to reduce the impact of the sectioning process on the global rigidity of the plate.

For each experiment and a given electrode length and position, the experimental procedure is as follows : the piezoelectric plate is placed in a wind tunnel of rectangular transversal section 10 cm wide and 5 cm high with transparent walls that allow visual access from the outside [40]. The negative electrodes of the piezoelectric films are shunted while a resistance R is connected between the positive electrodes (see figure 3-d). Once the system is set we proceed to generate a wind flow inside the tunnel. Initially at rest, the wind velocity is gradually increased until the plate starts to flap in a self sustained oscillatory regime (upper left image in figure 4), at which point the voltage V_o generated along the resistance R is measured (figure 4, upper right). The power dissipated in the resistance is then calculated as the temporal average $P_e = \langle V_o^2/R \rangle$, for a 5 second time frame. The resistance R is varied in order to find the value of β that maximizes the dissipated power. Indeed, it is expected that the harvesting efficiency or damping presents a maximum between the extreme values $\beta = 0$ (short circuit condition) and $\beta = \infty$ (open circuit condition). The value of β maximizing the efficiency corresponds to a tuning of the flapping frequency to the characteristic timescale of the RC circuit consisting of the piezoelectric capacitance and output resistor [11]. Figure 4 (bottom) shows a good agreement between experiments and simulations obtained from the model described in section II. The discrepancies observed between the experimental and numerical results are mainly due to small differences in

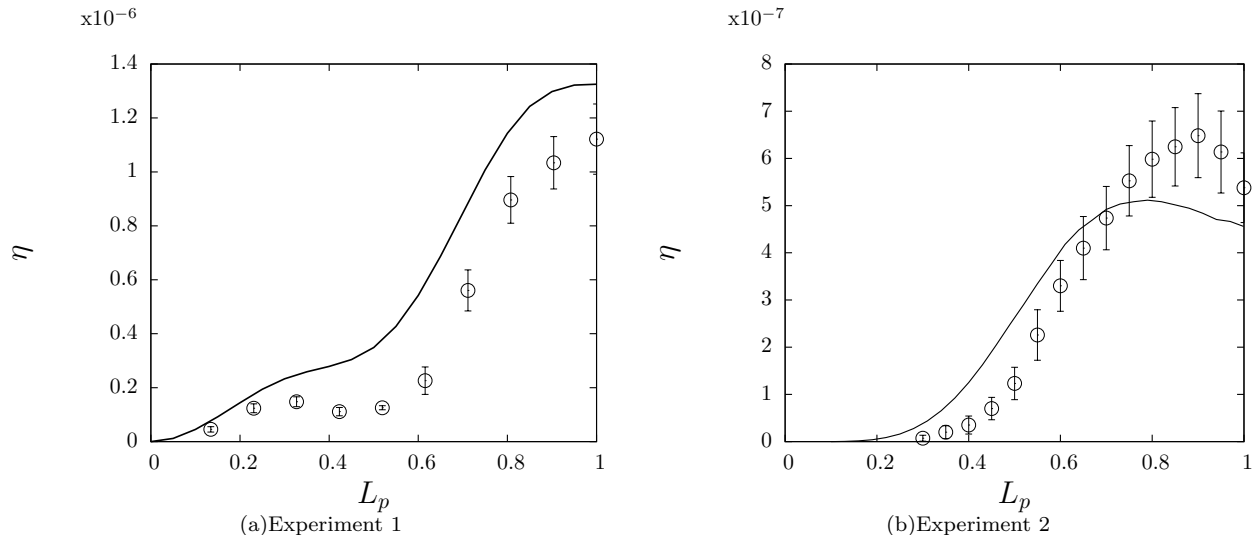


FIG. 5. (a) : Harvesting efficiency as a function of the electrode length L_p for experiment 1. Experimental parameters are : $U^* = 14.6$, $M^* = 0.68$, $H^* = 0.3$, $\beta = 0.8$ and $\alpha = 0.073$. (b) : Harvesting efficiency as a function of the electrode length L_p for experiment 2. Experimental parameters are : $U^* = 15.7$, $M^* = 0.61$, $H^* = 0.3$, $\beta = 0.8$ and $\alpha = 0.062$. Error bars correspond to the error propagation of the standard deviation of V_o used to calculate the dissipated power $P_e = \langle V_o^2/R \rangle$ during a 5 second time frame. Solid line corresponds to numerical simulations.

the flapping frequency of the flag, mainly caused by the error in the estimated value of the plate rigidity B used in the simulations. It is important to remark that the optimal β value remains fairly constant regardless of the size and position of the electrodes, a direct consequence of the flapping frequency remaining unchanged when changing the electrode position and size. This result was also confirmed in our numerical simulations.

Once the optimal value of β is identified, synchronized voltage measurements and image capturing of the flapping plate are carried out using an oscilloscope and a high speed camera placed over the wind tunnel. Finally, the efficiency of the system is computed as P_e/P_f (see section II).

Figure 5 shows the evolution of the harvesting efficiency of the piezoelectric flag with the electrode's length L_p for both experiments 1 and 2. A good qualitative agreement is observed between the experimental results and the numerical simulations corresponding to the same non-dimensional parameters. For experiment 1 (left panel), the maximum efficiency is achieved when the electrode occupies the whole length of the plate. For experiment 2 (right panel), the maximum efficiency is achieved when the upstream extremity of the patches is located at $s \approx 0.1$. Quantitative discrepancies between experimental and simulation results are, as mentioned previously, due to errors in the estimation of the plate rigidity B used in our simulation. Although an effort has been made during the experiments in order to reduce the impact of the electrode sectioning on the plate rigidity, this effect exists, and it is not accounted for in the theoretical model of the plate. Discrepancies in the absolute efficiency values between the two experiments have their origin in the difference between coupling coefficients of each experiment: $\alpha = 0.073$ for experiment 1 and $\alpha = 0.062$ for experiment 2.

The good agreement between experiments and simulations also validates the model presented in section II and motivates its use in the parametric study of more complex geometries presented in the remainder of this section.

B. Parametric study

In this subsection, simulation results for the energy harvesting efficiency are presented in the three cases sketched in figure 6:

- : I: One single electrode with variable length L_p and variable position along the flag surface (two-parameter problem)
- : II: Two electrodes of variable length covering the whole surface of the flag (one-parameter problem)
- : III: Three electrodes of variable length covering the whole surface of the flag (two-parameter problem)

For each case, we analyze the influence of size and distribution of the electrodes on the energy harvesting efficiency, defined as in the experimental case and expressed in non-dimensional form in Equation (24).

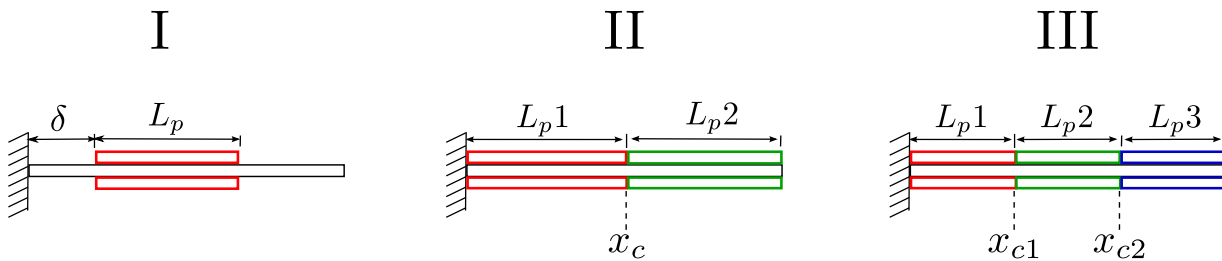


FIG. 6. Three cases of study in the energy harvesting efficiency of the piezoelectric flag.

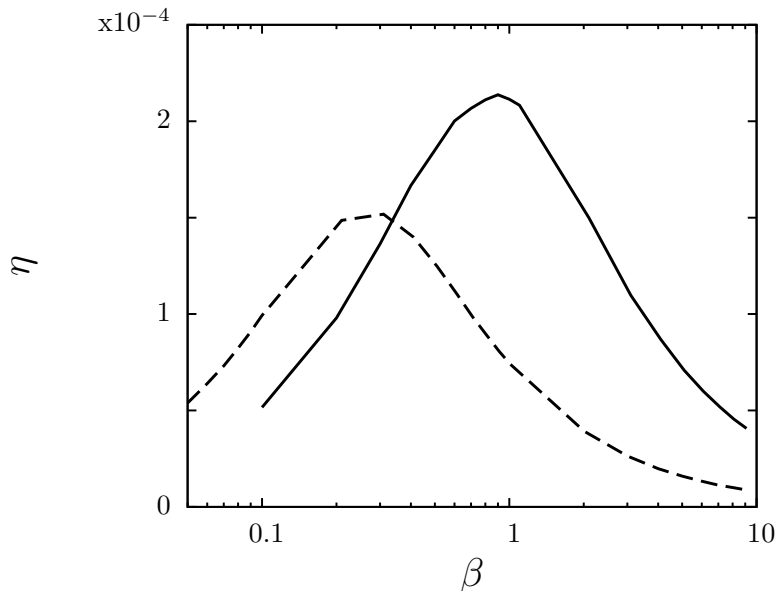


FIG. 7. Energy harvesting efficiency of a single electrode with $L_p = 1$ as a function of β for $M^* = 0.6$, $U^* = 13$ and $\alpha = 0.25$ (solid line) and $M^* = 10$, $U^* = 8.25$ and $\alpha = 0.25$ (dashed line).

A strong dependence of the efficiency on the system's physical parameters such as the mass ratio M^* , β , U^* and α is observed [11]. Before exhibiting results of geometry optimizations, it is necessary to select a representative set of these parameters. First of all, due to the weakly-nonlinear nature of the model used in the present work, the accuracy of the results is restricted to flow velocities U^* near the flapping instability threshold. Far from threshold this model exhibits discrepancies with previous simulations and a fully-nonlinear model of the system should be considered [11]. Thus, all the results presented further in this work correspond to near threshold situations (U^* is close to U_c^*), and hence, depend on the value of M^* selected.

Secondly, two typical values of the mass ratio M^* will be considered: $M^* = 0.6$, which corresponds to a plate in a low density fluid (*i.e.* flag in air), and $M^* = 10$ which corresponds to a plate in a dense fluid (*i.e.* light plate in water). For each case, the flow velocity U^* is adjusted to a typical value just above the instability threshold: $U^* = 13$ and 8.25, respectively.

As explained in the previous section, maximum energy harvesting is achieved when the flapping timescale and the RC circuit timescale compare. Hence, the optimal value of β will depend on the flapping frequency, which in turn depends on the mass ratio M^* [15]. On figure 7 the efficiency η in a typical single electrode configuration is plotted as function of β for two different values of M^* . One then observes that higher values of M^* tend to reduce the optimal value of β . Indeed, while for $M = 0.6$ the optimal tuning parameter is $\beta \sim 1$ (as in the experimental case), for $M^* = 10$ the value of β is about 0.3. In the following, these optimal values for β are retained.

The influence of the coupling coefficient α , the electrode position and geometry on the flapping frequency has then been tested. No significant impact on the flapping frequency, and consequently on the optimal value of β has been observed. This is expected to result from the relatively low coupling coefficients α considered.

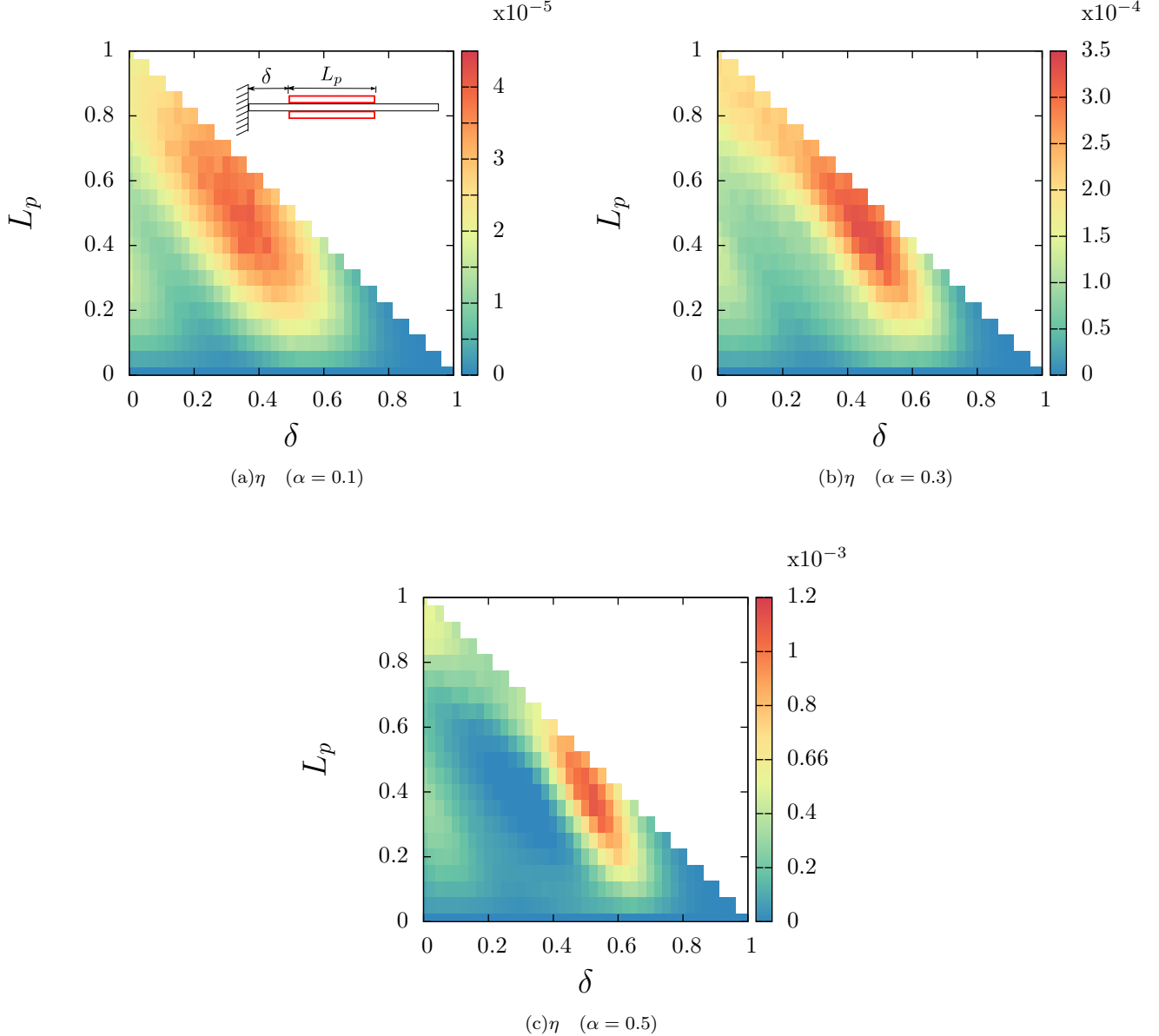


FIG. 8. Colormaps of the efficiency η in the (L_p, δ) plane; for all cases, $M^* = 0.67$, $U^* = 13$ and $\beta = 1$.

Case I : single electrode

We consider here the case of one electrode of length L_p that partially covers the surface of the plate. It is attached at a distance δ from the clamped end. Figure 8 presents the efficiency of the harvesting system as a function of δ and L_p , for fixed values of $M^* = 0.67$, $U^* = 13$ and $\beta = 1$, and increasing values of the electro-mechanical coupling factor α . Each colored rectangle of these plots corresponds to one single numerical simulation.

We observe that regardless of the value of α , the maximum efficiency is found for values of $\delta \neq 0$ and electrode lengths $0.35 < L_p < 0.5$. In these cases, the electrode is mainly located on the downstream half of the clamped-free plate. Moreover, the maximum efficiency region is observed to change as the electro-mechanical coupling factor α is increased. For small values of α (~ 0.1), the maximum efficiency region on the (L_p, δ) space extends from long electrodes $L_p = 0.8$ placed at $\delta = 0.2$ to smaller electrodes of length $L_p \sim 0.4$ and $\delta \sim 0.45$ (Figure 8a). As the coupling factor α is increased the maximum efficiency is also increased. Simultaneously, the maximum efficiency region shrinks and migrates in the (L_p, δ) plane to a new optimal configuration for an electrode of length $L_p \sim 0.4$

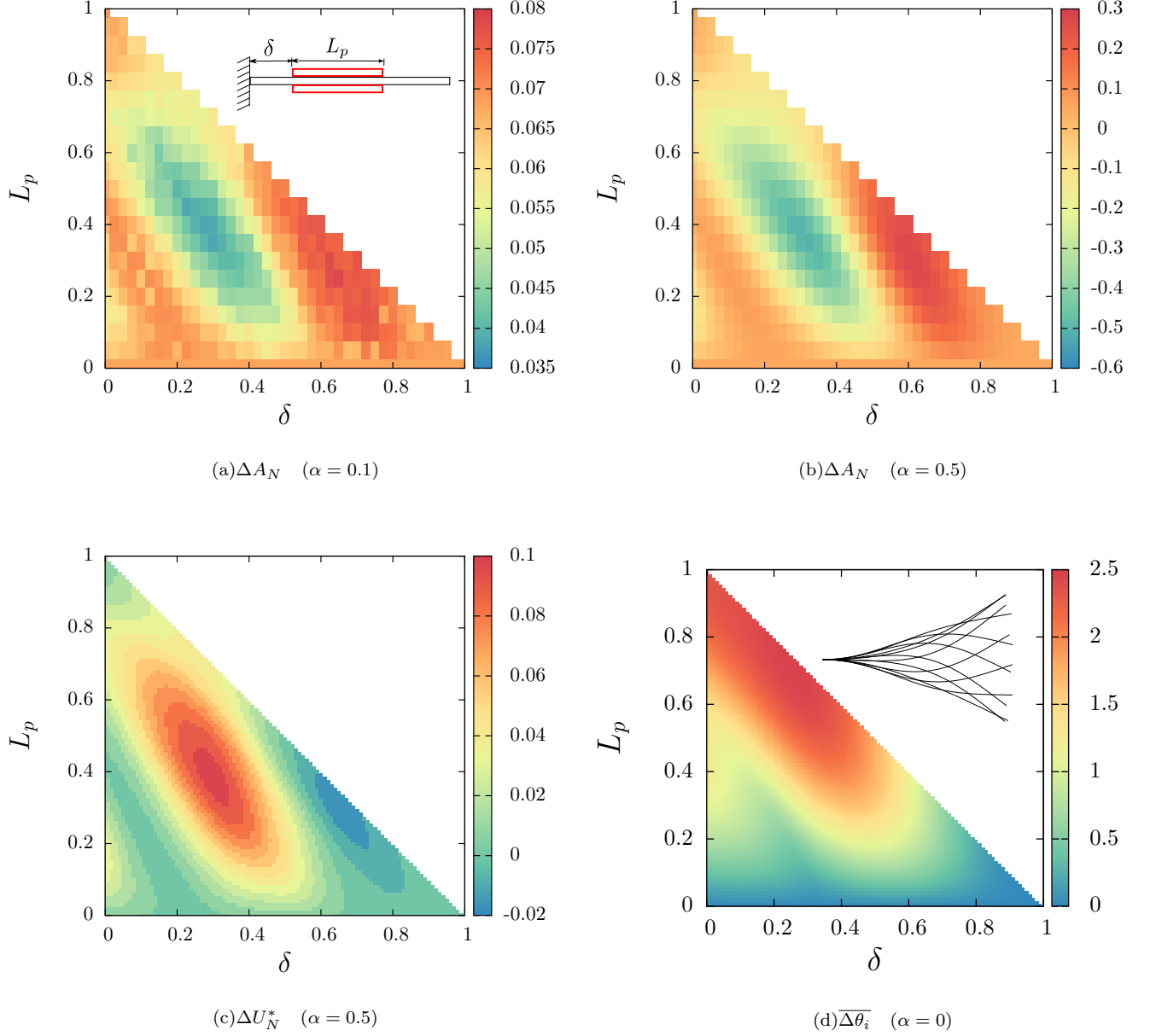


FIG. 9. Normalized flapping amplitude difference $\Delta A_N = (A - A_0)/A_0$ in the (L_p, δ) plane for (a) $\alpha = 0.1$ and (b) $\alpha = 0.5$ respectively, where A_0 corresponds to the flapping amplitude with no coupling ($\alpha = 0$). (c) Normalized critical fluid velocity $\Delta U_N^* = (U_c^* - U_{c0}^*)/U_{c0}^*$ as a function of the electrode position in the (L_p, δ) plane where U_{c0} corresponds to the flapping critical flow velocity with no coupling ($\alpha = 0$). (d) $\overline{\Delta \theta_i}$ integrated over one oscillation cycle for a plate with no piezo-electrical coupling. The mode shape of the fluttering flag over one oscillation cycle is depicted in the inset. Other parameters are $M^* = 0.67$, $U^* = 13$ and $\beta = 1$.

and $\delta \sim 0.55$ (Figure 8c).

To explain this difference in the optimal configuration, the influence of the geometrical parameters (δ, L_p) on the flapping amplitude is represented on figure 9(a,b) for small and large values of α . These figures show the normalized relative flapping amplitude $\Delta A_N = (A - A_0)/A_0$ in the (δ, L_p) plane for $\alpha = 0.1$ and $\alpha = 0.5$, respectively, where A_0 is the flapping amplitude obtained with no coupling ($\alpha = 0$). Comparison of these figures show that α only impacts the general magnitude of the amplitude fluctuation, and does not modify the parameter values leading to maximum (or minimum) amplitude. In particular, the maximum flapping amplitude corresponds to the optimal efficiency region achieved for high coupling. At large coupling, maximizing the flapping amplitude seems therefore to

be the optimal strategy. These maximum flapping amplitudes are also associated with the largest reduction of the critical flow velocity (Figure 9c) which is consistent with the generally observed result that the flag flapping amplitude is a monotonically increasing function of $U^* - U_c^*$ in the vicinity of the threshold.

On the other hand, when the coupling coefficient is small, the flapping flag dynamics is only marginally modified by the energy transfers to the piezoelectric patches. In that case, and neglecting the feedback coupling of the piezoelectric, the amplitude of the equivalent current generator (Figure 1a) can be directly obtained using Equation (6) from the kinematics of the flag *in the case of no coupling*. More specifically it is proportional to the relative rotation rate $[\dot{\theta}]_{s_i^-}^{s_i^+}$ of the two edges of the piezoelectric patch. Maximum efficiency is therefore achieved for low coupling when $\overline{\Delta\theta_i}$ is maximum, where

$$\overline{\Delta\theta_i} = \left\langle |\dot{\theta}(s_i^+) - \dot{\theta}(s_i^-)| \right\rangle, \quad (25)$$

a result consistent with Figures 8(a) and 9(d).

Before presenting some results at a higher value of the mass ratio, let us summarize the results obtained so far:

- For weakly coupled systems ($\alpha = 0.1$), the piezoelectric coupling has no influence on the flapping amplitude and the efficiency scales with $\overline{\Delta\theta_i}$ (figure 9d).
- For strongly coupled systems ($\alpha = 0.5$), the piezoelectric coupling α has an influence on the flapping amplitude which in turn also influences the efficiency. It was finally shown that the effect of α on ΔA_N can be directly deduced from that of α on ΔU_N .

For $M^* = 10$ and $\alpha = 0.25$, we observe different local maxima of the efficiency in the (δ, L_p) plane. They correspond to an electrode of length $L_p \sim 0.2$ at $\delta \sim 0.3, 0.5$ (absolute maximum) and 0.75 respectively. The presence of several local maxima with shorter electrodes is explained by the fact that a larger M^* leads to a higher order for the mode selected by the instability [41]: each local maximum corresponds to the localization of the piezoelectric patches in the zones of maximum curvature. This is confirmed by the strong correlation of the maximum efficiency with $\overline{\Delta\theta_i}$ during the oscillating cycle (Figure 10c).

It should also be pointed out that the maximum efficiency for $M^* = 10$ is about 2.5 times bigger than that for $M^* = 0.67$. This result stems from the difference in mode structures at higher mass ratio: a shorter wave length penalizes long electrodes that only react to the average flag curvature along their length. It also suggests that for higher M^* a larger number of smaller electrodes occupying the remaining free space on the plate surface could eventually increase the total efficiency even more. This aspect is investigated further in the following.

Case II: two electrodes

The case of two electrodes covering the entire plate is now considered for the same values of M^* , U^* and β as in previous case, and depends on a single parameter namely the length of the first piezoelectric electrode x_c (see figure 6). For $M^* = 0.67$, the maximum efficiency is obtained for $x_c \sim 0.35$ (Figure 11 a) and is approximately twice as large as the efficiency obtained for a single electrode covering the entire flag ($x_c = 0$ or $x_c = 1$), and represents a 6% increase of the efficiency in comparison with the optimized one-electrode configuration detailed in Case I. In this new optimal situation, the second electrode covers the most significant part of the plate's surface. Also, it is observed that for the same electrode's length, the downstream electrode leads to the largest energy harvesting, a result that is somehow expected because this region corresponds to the largest deflections of the flag.

For $M^* = 10$, two local maxima are observed around at $x_c \sim 0.5$ and $x_c \sim 0.7$. Figure 11(b) confirms that the downstream piezoelectric pair contributes the most to the efficiency for each maximum. However, the maximum efficiency of the two electrodes configuration is slightly smaller than that of case I, a consequence of the full coverage of the plate by the two electrodes, in particular near the leading edge where the local rotation vanishes. Due to the dominant mode structure at large M^* , shorter electrodes (either when using three or more electrodes or by choosing to cover only a fraction of the plate's surface) are therefore expected to improve again the efficiency.

Case III: three electrodes

We finally turn to the case of full coverage by three electrodes, described by the positions of the left edge of the first and second piezoelectric patches, x_{c1} and x_{c2} respectively.

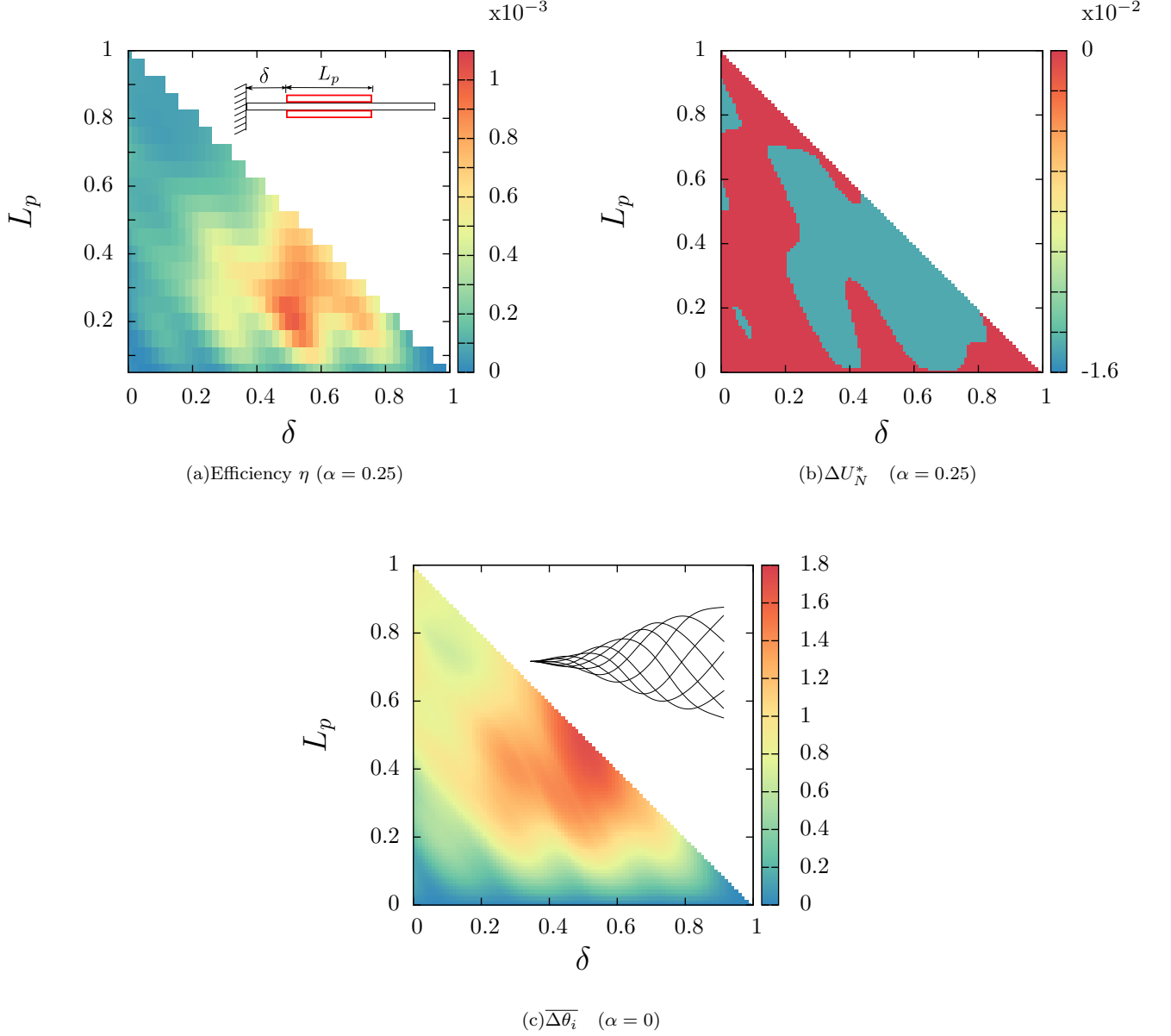


FIG. 10. (a) Evolution of the efficiency η with (L_p, δ) for $\alpha = 0.25$, $M^* = 10$, $U^* = 8.25$ and $H^* = 0.5$. (b) Normalized critical fluid velocity $\Delta U_N^* = (U_c^* - U_{c0}^*)/U_c^*$. (c) $\overline{\Delta\theta_i}$ integrated over one oscillation cycle for a plate with no piezo-electrical coupling. The mode shape of the fluttering flag over one oscillation cycle is depicted in the inset.

For $M^* = 0.67$ the maximum efficiency is reached for $x_{c1} \sim 0.4$ and $x_{c2} \sim 0.9$ (left plot in figure 12). In this configuration, the second electrode is approximately the same as in the maximum efficiency configuration of case I. The presence of two additional electrodes results however in a 20% increase of the efficiency in comparison with case I.

For $M^* = 10$, the arrangement of maximum efficiency ($x_{c1} = 0.5, x_{c2} = 0.7$) is again related to the optimal configuration of case I, with the second electrode of length $L_p = 0.2$ positioned at $\delta = 0.5$. Taking advantage of the deformation mode, the third electrode of length $L_p = 0.3$ and positioned at $\delta = 0.7$ contributes in almost the same amount to the efficiency as the second electrode. As a result, the total efficiency of the three electrode configuration is about three times higher than that of cases I and II.

This clearly demonstrates that for higher mass ratios, a larger number of electrodes results in significant improvements of the efficiency, while this strategy only leads to moderate improvements for lower M^* .

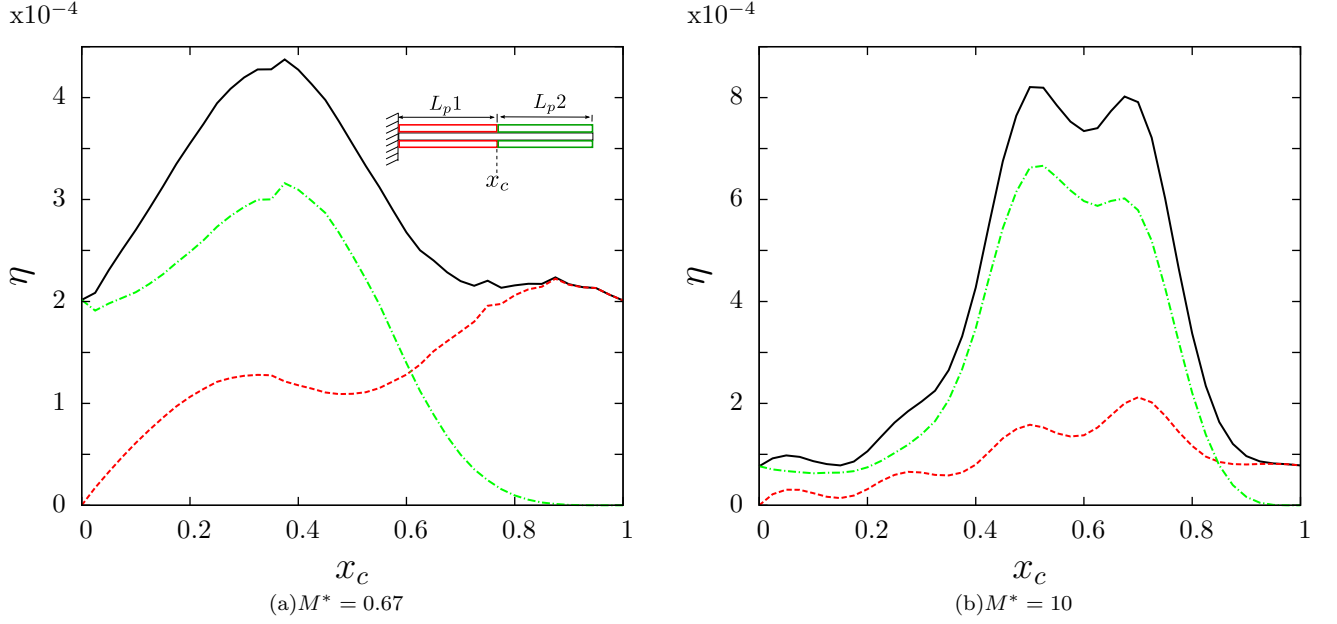


FIG. 11. Energy harvesting efficiency for a piezoelectric plate covered by two electrodes of variables size for (a) $M^* = 0.67$ and $U^* = 13$, and (b) $M^* = 10$ and $U^* = 8.25$. In both cases $\alpha = 0.25$ and $H^* = 0.5$. Each figure shows the total efficiency of the two electrode configuration (solid), as well as the efficiency of electrode 1 (dashed) and electrode 2 (dash-dotted).

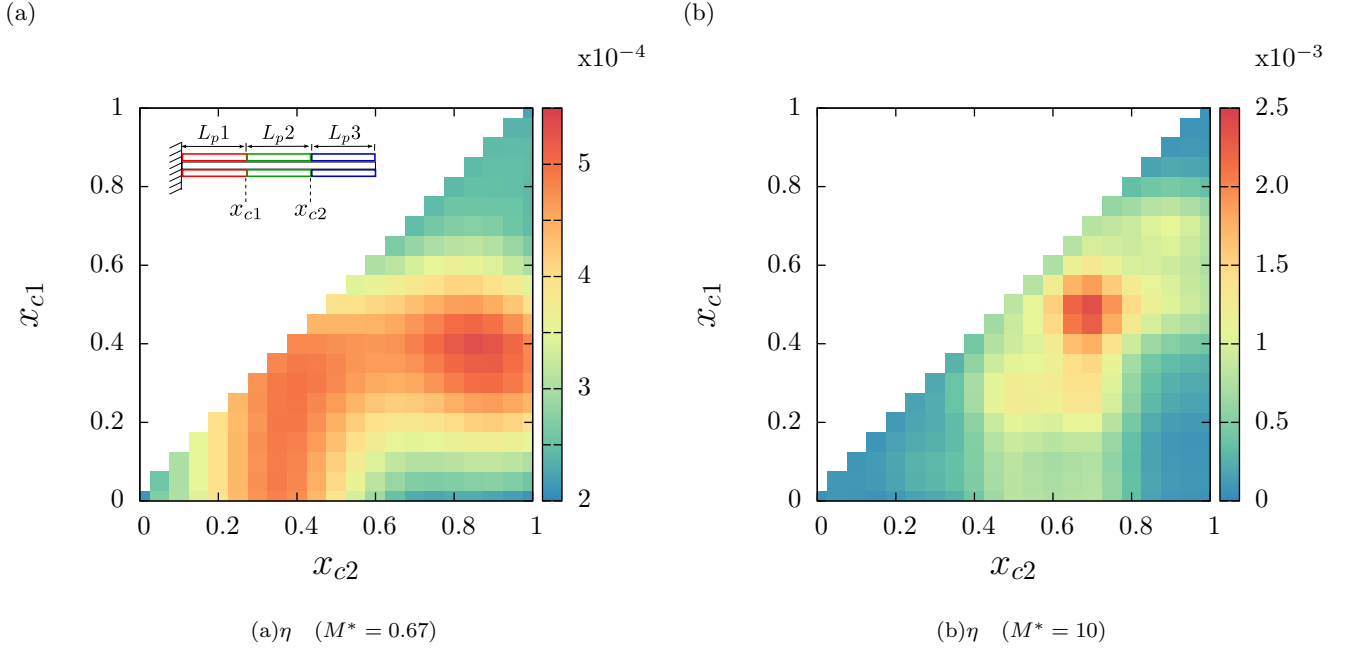


FIG. 12. Energy harvesting efficiency for a piezoelectric plate covered by three electrodes of variables size. (a) : $M^* = 0.67$ and $U^* = 13$. (b) : $M^* = 10$ and $U^* = 8.25$. In both cases $\alpha = 0.25$ and $H = 0.5$.

V. CONCLUSIONS

This article investigated the possibility of converting kinetic energy of a flow into electrical energy through elastic deformation of a fluttering plate using piezoelectric effect, a problem that has received growing attention in recent years. A critical question lies in the optimization of the energy transfers between the fluid, solid and electric circuit. The present work focused on the role and influence of the location of the piezoelectric electrodes on the efficiency of

the harvester, explicitly describing the discrete nature of the piezoelectric coverage of the flag and hence, allowing for a better representation of the experimental and practical situations.

To address this problem, the present work used a combination of theoretical analysis and experiments. A weakly nonlinear model considering a plate with a discrete number of piezoelectric patches pairs was developed and confronted to the experimental results. It was then used to determine geometries that maximize the energy harvesting efficiency in three different test cases: (1) one electrode partially covering the plate, (2) two electrodes fully covering the plate and (3) three electrodes fully covering the plate. For each configuration, the optimal geometries were described and analyzed.

The results presented in this work emphasize the critical role of the piezoelectric elements positioning: because the electric charge transfer responsible for the powering of the output circuit is solely given by the relative change of orientation of the flag between both ends of the patch, the placement of this patch must be carefully designed to take full advantage of the non-uniform flag deformation and its specificities, in particular the dependence of the mode shape with the mass ratio. In the case of a single electrode and small values of the mass ratio, the present study in fact shows that a greater amount of energy can be harvested when positioning the electrodes on the downstream half of the flag. At a higher value of the mass ratio, more than one optimal positioning are found, which is a consequence of more spatial oscillations of the unstable mode shape. Using a larger number of electrodes allows to improve the efficiency of the system particularly for higher mass ratios, where the modal structure corresponds to a shorter wavelength and is therefore better suited to shorter electrodes that are able to capture the flag's deformation best.

The work in this paper extends the results obtained in the context of damping or energy harvesting of vibrating plates in still fluid [33, 42] to flow-induced instabilities and more than one piezoelectric patch. The present results allow to conclude that the optimal location for piezoelectric energy harvesting along the plate is on the downstream half, and in that regard are reminiscent of the conclusions of Ref. [8] obtained for a pure damping model of the energy harvesting process. In both cases, the local deformation of the flag is driving the energy harvesting process, either through changes in the local curvature or in the relative orientation at both ends of the piezoelectric patches, and the response of the deformation of the flag to the presence of energy harvesting plays a critical role in determining the optimal location for large coupling coefficient. Both approaches however differ in the relevant measure of flag deformation (either curvature or relative orientation), which also impacts the detail of the optimal location for the damping or piezoelectric patches.

In the case of weakly coupled systems, it was also shown that the amount of harvested energy can be directly predicted from the kinematics of the flapping flag obtained for zero piezoelectric coupling. Maximizing the harvested energy hence requires to determine the positioning that will ensure a maximum relative variation of the orientation between the two ends of the piezoelectric components. In the case of strongly coupled system, the positioning of the electrodes may influence the flapping amplitude, and consequently the efficiency, because of the feedback effect of the piezoelectric patches on the flag dynamics. Near the stability threshold, the flapping amplitude can be directly related to the critical velocity fluctuations: in that regard, linear stability analysis may be a great tool to estimate the impact of the piezoelectric coverage on the efficiency in the case of large coupling.

ACKNOWLEDGMENTS

This work was supported by the ‘‘Laboratoire d’Excellence’’ LASIPS (project PIEZOFLAG), and the French National Research Agency ANR (Grant ANR-2012-JS09-0017). S.M. also acknowledges the support of a Marie Curie International Reintegration Grant within the 7th European Framework Program (Grant PIRG08-GA-2010-276762).

Appendix A

The vertical displacement y is expanded on clamped-free beam eigenmodes $\phi_p(s)$,

$$\mathbf{y} = \sum_{i=1}^N \phi_i(s) q_i(t). \quad (\text{A1})$$

After truncation to N linear modes, equation (15) is projected along mode p . Projection of the forces $L(y)$, f_m , f_B , f_χ , f_{res} and f_{reac} are given in this appendix. Projection of $L(y)$ along mode p reads,

$$L^p(y) = \ddot{q}_p + \lambda_p^4 q_p - \frac{\alpha}{U^*} \sum_i^{N_p} v_i (\phi'_p(s_i^+) - \phi'_p(s_i^-)) + M^* H^* \left(\ddot{q}_p + \sum_{i=1}^N a_i^p q_p + 2 \sum_{i=1}^N b_i^p \dot{q}_p \right), \quad (\text{A2})$$

where

$$a_i^p = \int_0^1 \phi_p \phi_i'' ds, \quad (\text{A3})$$

$$b_i^p = \int_0^1 \phi_p \phi_i' ds. \quad (\text{A4})$$

For $f_m(y)$ we have:

$$f_m^p(y) = \sum_{i,j,k=1}^N (q_i \dot{q}_j \dot{q}_k + q_i q_j \ddot{q}_k) (c_{i,j,k}^p + d_{i,j,k}^p), \quad (\text{A5})$$

with

$$c_{i,j,k}^p = \int_0^1 \phi_p \phi_i' \int_0^{s'} \phi_j' \phi_k' ds ds', \quad (\text{A6})$$

$$d_{i,j,k}^p = \int_0^1 \phi_p \phi_i'' \int_1^{s'} \int_0^{s''} \phi_j' \phi_k' ds ds'' ds'. \quad (\text{A7})$$

The term $f_B(y)$ projects as:

$$f_B^p(y) = \sum_{i,j,k=1}^N q_i q_j q_k (e_{i,j,k}^p + 4f_{i,j,k}^p + g_{i,j,k}^p), \quad (\text{A8})$$

where

$$e_{i,j,k}^p = \int_0^1 \phi_p \phi_i'' \phi_j'' \phi_k'' ds, \quad (\text{A9})$$

$$f_{i,j,k}^p = \int_0^1 \phi_p \phi_i' \phi_j'' \phi_k''' ds, \quad (\text{A10})$$

$$g_{i,j,k}^p = \int_0^1 \phi_p \phi_i' \phi_j' \phi_k^{(4)} ds. \quad (\text{A11})$$

The mechanical-electrical coupling term f_χ gives

$$f_\chi^p(y, v_1 \dots v_{N_p}) = \frac{1}{2} \sum_{j,k=1}^N q_j q_k \sum_{i=1}^{N_p} v_i \left(A_{j,k}^p(s_i^+) - A_{j,k}^p(s_i^-) \right), \quad (\text{A12})$$

with

$$A_{j,k}^p = \phi_j' \phi_k' \phi_p' + \phi_j'' \phi_k' \phi_p + \phi_j' \phi_k'' \phi_p - 2\phi_p \phi_j' \phi_k''. \quad (\text{A13})$$

For the resistive term f_{res} we have :

$$f_{res}^p(y) = \frac{1}{2} C_D t_{j,k}^p, \quad (\text{A14})$$

where

$$t_{j,k}^p = \int_0^s \phi_p \sum_{i,j=1}^N |\phi'_i q_i + \phi_i \dot{q}_i| (\phi'_j q_j + \phi_j \dot{q}_j) ds. \quad (\text{A15})$$

Notice that unlike the other coefficients $t_{j,k}^p$ is a function of time. It is due to the presence of the absolute value. This coefficient must then be recalculated at each time step.

Finally, for f_{reac} we have:

$$\begin{aligned} f_{\text{reac}}^p(y) = & - \sum_{i,j,k=1}^N \left(\frac{1}{2} \beta_{i,j,k}^p + \varpi_{i,j,k}^p \right) q_i q_j q_k + \sum_{i,j,k=1}^N (\eta_{i,j,k}^p - 3\zeta_{i,j,k}^p - 2\varsigma_{i,j,k}^p) q_i q_j \dot{q}_k \\ & - 2 \sum_{i,j,k=1}^N \xi_{i,j,k}^p \dot{q}_i \dot{q}_j q_k - \frac{1}{2} \sum_{i,j,k=1}^N \sigma_{i,j,k}^p q_i \dot{q}_j \dot{q}_k + \sum_{i,j,k=1}^N \psi_{i,j,k}^p (q_i \ddot{q}_j q_k + q_i \dot{q}_j \dot{q}_k + 2\dot{q}_i \dot{q}_j q_k) \\ & + 2 \sum_{i,j,k=1}^N \varphi_{i,j,k}^p q_i \dot{q}_j q_k - \sum_{i,j,k=1}^N \varrho_{i,j,k}^p q_i q_j \ddot{q}_k \end{aligned} \quad (\text{A16})$$

with:

$$\beta_{i,j,k}^p = \int_0^1 \phi_p \phi'_i \phi'_j \phi''_k ds, \quad (\text{A17})$$

$$\eta_{i,j,k}^p = \int_0^1 \phi_p \phi'_i \phi'_j \phi'_k ds, \quad (\text{A18})$$

$$\zeta_{i,j,k}^p = \int_0^1 \phi_p \phi'_i \phi''_j \phi'_k ds, \quad (\text{A19})$$

$$\xi_{i,j,k}^p = \int_0^1 \phi_p \phi_i \phi'_j \phi'_k ds, \quad (\text{A20})$$

$$\sigma_{i,j,k}^p = \int_0^1 \phi_p \phi''_i \phi_j \phi_k ds, \quad (\text{A21})$$

$$\psi_{i,j,k}^p = \int_0^1 \phi_p \phi'_i \int_0^{s'} \phi'_j \phi'_k ds ds', \quad (\text{A22})$$

$$\varphi_{i,j,k}^p = \int_0^1 \phi_p \phi''_i \int_0^{s'} \phi'_j \phi'_k ds ds', \quad (\text{A23})$$

$$\varrho_{i,j,k}^p = \int_0^1 \phi_p \phi''_i \int_{s'}^1 \phi'_j \phi'_k ds ds', \quad (\text{A24})$$

$$\varsigma_{i,j,k}^p = \int_0^1 \phi_p \phi''_i \int_{s'}^1 \phi'_j \phi'_k ds ds', \quad (\text{A25})$$

$$\varpi_{i,j,k}^p = \int_0^1 \phi_p \phi''_i \int_{s'}^1 \phi'_j \phi''_k ds ds'. \quad (\text{A26})$$

-
- [1] G.W. Taylor, J.R. Burns, Kammann S.M., Powers W.B., and T.R. Welsh. The Energy Harvesting Eel: A Small Subsurface Ocean/River Power Generator. *IEEE Journal of Oceanic Engineering*, 26(4):539–547, 2001.
 - [2] M. M. Bernitsas, K. Raghavan, Y. Ben-Simon, and E. M. H. Garcia. VIVACE (Vortex Induced Vibration Aquatic Clean Energy): A New Concept in Generation of Clean and Renewable Energy From Fluid Flow. *Journal of Offshore Mechanics and Arctic Engineering*, 130:041101–1, 2008.
 - [3] C. Grouthier, S. Michelin, and E. de Langre. Energy harvesting by vortex-induced vibrations in slender structures. In *Proceedings of the ASME 2013 32nd International Conference on Ocean, Offshore and Arctic Engineering OMAE2013*, Nantes, France, 2013.
 - [4] A. Erturk, W. G. R. Vieira, Jr. C. De Marqui, and D. J. Inman. On the energy harvesting potential of piezoaeroelastic systems. *Applied Physics Letters*, 96(18):184103, 2010.

- [5] M. Bryant, E. Wolff, and E. Garcia. Aeroelastic flutter energy harvester design: the sensitivity of the driving instability parameters. *Smart Materials and Structures*, 20:125017, 2011.
- [6] Q. Xiao and Q. Zhu. A review on flow energy harvesters based on flapping foils. *Journal of Fluids and Structures*, 46:174–191, 2014.
- [7] K. Singh, S. Michelin, and E. de Langre. Energy harvesting from axial fluid-elastic instabilities of a cylinder. *Journal of Fluids and Structures*, 30:159–172, 2012.
- [8] K. Singh, S. Michelin, and E. de Langre. The effect of non-uniform damping on flutter in axial flow and energy harvesting strategies. *Proceedings of the Royal Society A*, 468:3620–3635, 2012.
- [9] L. Tang, M.P. Paidoussis, and J. Jiang. Cantilevered flexible plates in axial flow: Energy transfer and the concept of flutter-mill. *Journal of Sound and Vibration*, 326:263–276, 2009.
- [10] O. Doaré and S. Michelin. Piezoelectric coupling in energy-harvesting fluttering flexible plates: linear stability analysis and conversion efficiency. *Journal of Fluids and Structures*, 27(8):1357–1375, 2011.
- [11] S. Michelin and O. Doaré. Energy harvesting efficiency of piezoelectric flags in axial flows. *Journal of Fluid Mechanics*, 714:489–504, 2013.
- [12] D. T. Akcabay and Y. L. Young. Hydroelastic response and energy harvesting potential of flexible piezoelectric beams in viscous flow. *Physics of Fluids*, 24(5):054106, 2012.
- [13] M. J. Shelley and J. Zhang. Flapping and bending bodies interacting with fluid flows. *Annual Review of Fluid Mechanics*, 43:449–465, 2011.
- [14] A. Kornecki, E. H. Dowell, and J. O’Brien. On the aeroelastic instability of two-dimensional panels in uniform incompressible flow. *Journal of Sound and Vibration*, 47(2):163–178, 1976.
- [15] C. Q. Guo and M. P. Paidoussis. Stability of Rectangular Plates With Free Side-Edges in Two-Dimensional Inviscid Channel Flow. *Journal of Applied Mechanics*, 67(1):171–176, 2000.
- [16] C. Lemaitre, P. Hémon, and E. de Langre. Instability of a long ribbon hanging in axial air flow. *Journal of Fluids and Structures*, 20(7):913–925, 2005.
- [17] C. Eloy, C. Souilliez, and L. Schouveiler. Flutter of a rectangular plate. *Journal of Fluids and Structures*, 23(6):904–919, 2007.
- [18] O. Doaré, M. Sauzade, and C. Eloy. Flutter of an elastic plate in a channel flow: Confinement and finite-size effects. *Journal of Fluids and Structures*, 27(1):76–88, 2011.
- [19] S. Alben. Simulating the dynamics of flexible bodies and vortex sheets. *Journal of Computational Physics*, 228(7):2587–2603, 2009.
- [20] S. Michelin, S. G. Llewellyn Smith, and B. J. Glover. Vortex shedding model of a flapping flag. *Journal of Fluid Mechanics*, 617:1–10, 2008.
- [21] C. Eloy, N. Kofman, and L. Schouveiler. The origin of hysteresis in the flag instability. *Journal of Fluid Mechanics*, 691:583–593, 2012.
- [22] N.W. Hagood and A. von Flotow. Damping of structural vibrations with piezoelectric materials and passive electrical networks. *Journal of Sound and Vibration*, 146(2):243–268, 1991.
- [23] A. Preumont. *Vibration Control of Active Structures: An Introduction*. Kluwer Academic Publishers, 2nd edition, 2002.
- [24] E. Lefevre, A. Badel, C. Richard, L. Petit, and D. Guyomar. A comparison between several vibration-powered piezoelectric generators for standalone systems. *Sensors and Actuators A: Physical*, 126(2):405–416, 2006.
- [25] S. R. Anton and H. A. Sodano. A review of power harvesting using piezoelectric materials (2003–2006). *Smart Materials and Structures*, 16:1–21, 2007.
- [26] N. Elvin and A. Erturk. *Advances in energy harvesting methods*. Springer, 2013.
- [27] Y. Y. Chen, D. Vasic, Y. P. Liu, and F. Costa. Study of a piezoelectric switching circuit for energy harvesting with bistable broadband technique by work-cycle analysis. *Journal of Intelligent Material Systems and Structures*, 24(2):180–193, 2013.
- [28] J. A. Dunnmon, S. C. Stanton, B. P. Mann, and E. H. Dowell. Power extraction from aeroelastic limit cycle oscillations. *Journal of Fluids and Structures*, 27(8):1182–1198, 2011.
- [29] D. T. Akcabay and Y. L. Young. Scaling the dynamic response and energy harvesting potential of piezoelectric beams. *Applied Physics Letters*, 101(26):264104, 2012.
- [30] L. Tang, M.P. Paidoussis, and J. Jiang. Cantilevered flexible plates in axial flow: Energy transfer and the concept of flutter-mill. *Journal of Sound and Vibration*, 326:263–276, 2009.
- [31] R.D. Blevins. *Flow-induced vibration*. 1990.
- [32] P. Buchak, C. Eloy, and P. Reis. The clapping book: wind-driven oscillations in a stack of elastic sheets. *Phys. Rev. Lett.*, 105:194301, 2010.
- [33] O. Thomas, J. F. Deü, and J. Ducarne. Vibrations of an elastic structure with shunted piezoelectric patches: efficient finite element formulation and electromechanical coupling coefficients. *International Journal for Numerical Methods in Engineering*, 80(2):235–268, OCT 8 2009.
- [34] M.J. Lighthill. Large-amplitude elongated-body theory of fish locomotion. *Proc. Roy. Soc. B*, 179:125–138, 1971.
- [35] R. M. Howell, A. D. Lucey, P. W. Carpenter, and M. W. Pitman. Interaction between a cantilevered-free flexible plate and ideal flow. *Journal of Fluids and Structures*, 25(3):544–566, 2009.
- [36] T. B. Benjamin. The threefold classification of unstable disturbances in flexible surfaces bounding inviscid flows. *Journal of Fluid Mechanics*, 16(3):436–450, 1963.
- [37] R. A. Cairns. The role of negative energy waves in some instabilities of parallel flows. *Journal of Fluid Mechanics*, 92:1–14, 1979.
- [38] O. Doaré. Dissipation effect on local and global stability of fluid-conveying pipes. *Journal of Sound and Vibration*,

- 329(1):72–83, 2010.
- [39] P. Bisegna, G. Caruso, and F. Maceri. Optimized electric networks for vibration damping of piezoactuated beams. *Journal of Sound and Vibration*, 289(4-5):908–937, 2006.
- [40] O. Doaré, D. Mano, and J. C. Bilbao Ludena. Effect of spanwise confinement on flag flutter: Experimental measurements. *Physics of Fluids*, 23:111704, 2011.
- [41] C. Eloy, R. Lagrange, C. Souilliez, and L. Schouveiler. Aeroelastic instabilities of cantilevered flexible plates in uniform flow. *Journal of Fluid Mechanics*, 611:97–106, 2008.
- [42] Y. Liao and H. A. Sodano. Optimal placement of piezoelectric material on a cantilever beam for maximum piezoelectric damping and power harvesting efficiency. *Smart Materials and Structures*, 21(10):105014, 2012.