



Lipoic acid decreases Mcl-1, Bcl-xL and up regulates Bim on ovarian carcinoma cells leading to cell death.

Perrine Kafara, Philippe Icard, Marilyne Guillamin, Laurent Schwartz,
Hubert Lincet

► **To cite this version:**

Perrine Kafara, Philippe Icard, Marilyne Guillamin, Laurent Schwartz, Hubert Lincet. Lipoic acid decreases Mcl-1, Bcl-xL and up regulates Bim on ovarian carcinoma cells leading to cell death.. Journal of Ovarian Research, BioMed Central, 2015, 8, pp.36. <10.1186/s13048-015-0165-z>. <inserm-01187953>

HAL Id: inserm-01187953

<http://www.hal.inserm.fr/inserm-01187953>

Submitted on 28 Aug 2015

HAL is a multi-disciplinary open access archive for the deposit and dissemination of scientific research documents, whether they are published or not. The documents may come from teaching and research institutions in France or abroad, or from public or private research centers.

L'archive ouverte pluridisciplinaire **HAL**, est destinée au dépôt et à la diffusion de documents scientifiques de niveau recherche, publiés ou non, émanant des établissements d'enseignement et de recherche français ou étrangers, des laboratoires publics ou privés.



RESEARCH

Open Access



Lipoic acid decreases Mcl-1, Bcl-x_L and up regulates Bim on ovarian carcinoma cells leading to cell death

Perrine Kafara^{1,2,3}, Philippe Icard^{1,2,3,4}, Marilyne Guillamin^{1,2,3}, Laurent Schwartz⁴ and Hubert Lincet^{5,6,7*}

Abstract

Background: Ovarian carcinoma is the leading cause of death from gynecological cancer because there is risk of chemoresistance. As previously demonstrated in our laboratory, Alpha-lipoic acid (LA), a co-factor for metabolic enzymes, suppresses the tumor growth. In this study, we have researched the mechanisms that are responsible for the activity of LA.

Methods: We have studied the mechanisms of LA in two ovarian cancer cell lines, a cisplatin sensitive one, IGROV1 and its resistant counterpart, IGROV1-R10. These cells have been exposed to lipoic acid at various concentrations. Cell proliferation, cell cycle repartition and nuclear staining with DAPI were recorded. Western blot analyses were performed to detect various proteins implied in apoptotic cell death pathways. To investigate the formation of ROS, the oxidation of CM-DCFH₂-DA were also determined.

Findings: LA suppressed growth proliferation and induced apoptosis in both ovarian cell lines. Moreover, LA provoked a down regulation of two anti-apoptotic proteins, Mcl-1 and Bcl-x_L protein and a strong induction of the BH3-only protein Bim. Furthermore, LA induced ROS generation which could be involved in the CHOP induction which is known to activate the Bim translation.

Conclusions: Our results reveal novel actions of LA which could explain the anti-tumoral effects of the LA. Therefore, LA seems to be a promising compound for ovarian cancer treatment.

Keywords: Lipoic acid, Mcl-1, Bcl-x_L, Bim, ovarian cancer, ROS

Findings

Background

Alpha-Lipoic acid (LA) is a naturally antioxidant lipophilic compound synthesized in small amounts by plants and animals, including humans. It is an essential co-factor for mitochondrial enzymes (e.g. pyruvate dehydrogenase (PDH), succinate dehydrogenase (SDH)) [1, 2] involved in tricarboxylic acid cycle (TCA). Furthermore, LA has antioxidant and redox-regulating properties [3]. The reduced form of LA known as dihydrolipoic acid is the predominant form that interacts with reactive oxygen species (ROS), although the oxidized forms can also

inactivate free radicals [4]. Beneficial effects of LA in several non tumoral pathologies have been described [5]. In cancer studies, LA suppressed the proliferation of cells such as bladder, breast, colon, hepatoma, and lung [6–11] without effect on normal cells [12] such as liver, ovarian, neurons and hepatocytes [13–15]. These effects could induce the apoptosis that is impaired in cancer.

Apoptosis is under the control of Bcl-2 family members, promoting or inhibiting this process [16]. Death signals activate and/or induce pro-apoptotic members such as Bim which promotes activation of pro-apoptotic effectors (Bax and Bak) and releasing apoptogenic factors from mitochondria [17]. Bim, is one of the most potent BCL-2 homology (BH) 3-only molecules, in terms of cell killing [18], and has also clearly overlapping functions in p53-dependent and p53-independent apoptosis. Anti-apoptotic members, such as Bcl-2, Bcl-x_L and Mcl-1,

* Correspondence: hubert.lincet@univ-lyon1.fr

⁵UMR INSERM U1052, CNRS 5286, Centre de Recherche en Cancérologie de Lyon, Lyon, France

⁶ISPB, Faculté de Pharmacie de Lyon, 8 avenue Rockefeller, F69373 Lyon, Cedex 08, France

Full list of author information is available at the end of the article

overexpressed in numerous human malignancies, contribute to cell survival and drug resistance [19, 20]. Bcl-x_L overexpression has been found associated with chemoresistance and its decrease involved in apoptosis [21, 22]. Moreover, *MCL-1* gene, frequently amplified in human cancers [20], is associated with chemoresistance and relapse [19, 20, 23]. The reduction of Mcl-1 expression leads to apoptosis in numerous cancer cells [22–26]. This reduction is notably induced by glucose privation [27].

Many cancer cells preferentially enhance aerobic glycolysis and transform a significant part of glucose in lactate, even in the presence of oxygen, a common feature of tumor growth described as the Warburg effect [28]. This metabolism furnishes a significant share of ATP and essential intermediates required for tumor proliferation [29]. Its inhibition arrests cancer cell growth [26, 30–32]. The Warburg effect should be in relation with inactivation of PDH and/or over-activation of LDH [29]. The PDH inactivation disconnects TCA from glycolysis, and in place of pyruvate, glutaminolysis replenishes TCA cycle. LA may reactivate PDH and could be a promising molecule to counteract tumor metabolism [2].

In this study, we examined effect of LA on cellular growth of two human ovarian carcinomas and the molecular mechanisms involved. We found LA demonstrated anti-proliferative effect, induced cell cycle arrest and apoptosis. In our model, the anti-tumoral effects of LA might involve, at least partially, from its property to decrease Mcl-1 and Bcl-x_L and to up regulate the BH3 only protein Bim through CHOP induction.

Materials & methods

Cell lines and culture conditions

The IGROV1 cell line was kindly provided by Dr. J. Bénard (Institut Gustave Roussy, Villejuif, France). The variant highly chemoresistant cell line, IGROV1-R10, was established as previously described by Poulain *et al.* [33]. Cells were grown in RPMI-1640 medium + Gluta-max™ (Gibco Life Technologies, Cergy-Pontoise, France) supplemented with 10 % fetal calf serum, 33 mM sodium bicarbonate (Gibco Life Technologies, Cergy Pontoise, France). Cells were maintained at 37 °C in a 5 % CO₂ humidified atmosphere and split twice a week by trypsinization.

Lipoic acid

Lipoic acid (LA) was purchased from Meda Pharma (Bad Homburg v.d.h, Germany). This compound is pre-conditioned in a bulb for a volume of 24 ml. This solution contains 600 mg alpha-lipoic acid. The other ingredients are Trometamol (known by its synonym Tris) and water for the injectable. Data were obtained from the supplier. 5.10⁵ cells were seeded in 25 cm² flask day before treatment. When cells have reached their

exponentially growing phase, they were treated 24 h later continuous manner. The solution is put directly into the flasks at the concentration studied (0.1; 0.5 and 1 mM).

siRNA synthesis and Transfection

All siRNAs used in these studies were chemically synthesised by Eurogentec (Liege, Belgium) and were received as annealed oligonucleotides. The sequence of the double-stranded RNA used to inhibit Bim expression (denoted siBim) is anti-sense 5'-uaacagucguaagauaacctt-3'. Control siRNA (noted siCTRL) was purchased from Eurogentec (Eurogentec Negative Control SiRNA). According to the manufacturer's instruction, exponentially growing cells were seeded the day before to reach around 50 % confluence at the time of transfection. The transfection has been described by Lepleux *et al.* [31].

Proliferation analysis

Cell number and viability were estimated at various times after the beginning of treatment by a semi-automated image-based cell analyzer (Cedex XS Analyser, Roche Applied Science, Meylan, France) using the trypan blue exclusion method.

Analysis of cellular DNA content by flow cytometry

Cells were prepared for flow cytometry as detailed [22, 31]. Briefly, adherent and detached cells were pooled, washed in PBS and fixed in 70 % ethanol, centrifuged then incubated for 30 min at 37 °C in PBS. Pellets were collected and resuspended for staining with Propidium Iodide (PI) using the DNA Prep Reagent Kit (Beckman-Coulter, Villepinte, France). Samples were then analysed using Gallios flow cytometer (Beckman Coulter) equipped with a blue diode at 22 mW. The fluorescence of Propidium Iodide was collected in the FL3 channel with a 620 nm bandpass filter. The doublets were excluded from analysis using an area versus peak DNA content histogram. The singulets were analysed in a single-parameter histogram.

Gallios software was used for data acquisition. Kaluza Software (Beckman Coulter) was run for data analysis.

Nuclear morphology study with 4',6-diamidino-2-phenylindole (DAPI)

After treatment, both detached and adherent cells were pooled after trypsinization, collected on polylysine-coated glass slide by cytocentrifugation, and fixed in ethanol/chloroform/acetic acid solution (6:3:1). The preparations were treated as described by Lepleux *et al.* [31].

Western immunoblotting

Adherent cells were rinsed with deionized water and lysed with lysis buffer (pH 8.8 30 mmol.L⁻¹ Tris buffer containing 6 mol.L⁻¹ urea, 2 mol.L⁻¹ thiourea, 2 %

CHAPS, 1X protease inhibitor Mix. Western blot were carried out as described [22]. The membrane was either incubated overnight at 4 °C in T-TBS-milk 5 % with the following primary antibodies: anti-Mcl-1 (Santa Cruz Biotechnology), anti-Noxa (Calbiochem), and anti-actin (Millipore). Cleaved and total Caspase 3, PARP, Bcl-x_L, Bim and CHOP were purchased from Cell Signaling Technology (Ozyme, Saint Quentin en Yvelines, France). Membranes were washed with T-TBS and incubated with anti-rabbit or anti-mouse secondary antibodies. Revelation was carried out using ECL Prime detection reagent (GE Healthcare, Orsay, France).

RNA extraction and real-time quantitative reverse transcription-PCR (qRT-PCR)

Total RNAs were extracted using the TRIzol® (Invitrogen, LifeTechnologies, Cergy Pontoise, France). The qRT-PCR was carried out as described [34]. Primer and probe sequences for real-time detection of Bim mRNA (assay ID#Hs00708019_s1), Mcl-1 mRNA (assay ID#HS00172036_m1) and endogenous control gene GAPDH mRNA [34] were purchased from Applied Biosystems. Bim and Mcl-1 transcripts were quantified relative to GAPDH and normalized to control untreated cells by the comparative 2^{ΔΔCt} method.

Measurement of ROS with CM-DCFH₂-DA probe

The probe CM-DCFH₂-DA was used to assess the production of ROS according to manufacturer's instructions. The CM-DCFH₂-DA passes through the cell membrane and once inside the cell is converted to the non-fluorescent derivative dichlorofluorescein, which in turn remains inside the cell and reacts with intracellular ROS to produce the DCF. To study the time-dependent effect of α-LA on ROS production, 5.10⁵ cells were exposed to 0.5 or 1 mM of α-LA for 3 h, 6 h or 24 h, and were incubated with 5 μM CM-H₂DCFDA (C6827, Molecular probes) for 30 min at 37 °C in dark. The ROS scavenger NAC (3 mM) (Sigma-Aldrich, France) was added 1 h before LA treatment (1 mM). After, adherent cells were washed out the excess probe with PBS and then trypsinized. The fluorescence of DCF was measured in the FL1 channel with a 525 nm bandpass filter on Gallios flow cytometer (Beckman Coulter). Gallios software was used for data acquisition. Kaluza Software (Beckman Coulter) was run for data analysis. The results were treated and presented as means ± standard errors of the means (SEM) of three independent experiments using GraphPad Prism5 software.

Results

Effects of lipolic acid on cell growth and cell cycle

To explore the therapeutic potential effect of LA for ovarian cancer treatment, we evaluated its effect on cell

growth and cell cycle distribution. For studying cellular growth, Cisplatin-sensitive (IGROV1) and cisplatin-resistant (IGROV1-R10) human cell lines, were cultured either in absence or in presence of LA (0.1, 0.5 and 1 mM). In each cell line, cell growth was significantly reduced in a dose-dependent manner, whereas control cells increased 3–4 folds (Fig. 1a). LA (1 mM) strongly inhibited cell growth at each time point tested, and the number of viable cells remaining close to seeding after 72 h (Fig. 1a). At 0.5 mM, this inhibition was also clear, but delayed after 48 h treatment. At this time, we studied cellular morphology, distribution in the different phases of cell cycle and DAPI nuclear staining. At LA 0.1 mM, no effect was detected in both cell line (Fig. 1b). From LA 0.5 mM, IGROV1 and IGROV1-R10 cells were less confluent, as compared to untreated cells or treated with LA 0.1 mM (Fig. 1b, upper line of each panel). IGROV1 and IGROV1-R10 showed an important percentage of cells in sub-G1 phase (21.1 %, and 27.5 % respectively) in response to LA 1 mM (Fig. 1b, lower line of each panel). These results were confirmed by DAPI nuclear staining which showed more features of cell death, e.g. nuclear condensations and fragmentations (as named apoptotic bodies) (Fig. 1b, middle line of each panel) and also by PARP cleavage which has been found but not a caspase-3 cleavage from 0.5 mM in IGROV1 and resistant counterpart IGROV1-R10 cells (Fig. 1c).

After 72 h of treatment (0.5 and 1 mM), in each cell line, many rounded cells were detected, suggesting detached cells; a phenomenon which seemed dose-dependent (Fig. 1d, upper line of each panel). The cell cycle repartition revealed that percentage of cells in sub-G1 phase is drastically increased at 72 h as compared to 48 h in both cell lines and is also increased in a concentration-dependent manner reaching 53.4 % at LA 1 mM (Fig. 1d, lower line of each panel). Moreover, DAPI staining revealed numerous apoptotic bodies after exposure to 0.5 or 1 mM LA (Fig. 1d middle line of each panel). At this time, we can see that a caspase-3 activation which was accompanied by a strong decrease of the full length PARP (116 kDa) (Fig. 1e).

These results indicated that LA inhibited cellular proliferation and induced a sub-G1 peak associated caspase-3 activation. The cell detachment observed in flasks, might be associated with cell death and deregulation of apoptosis-related proteins.

Effect of lipolic acid on expression of the apoptosis-related proteins

We tested whether the effect of LA (0.5 or 1 mM) was associated with a modulation the expression of the apoptosis-related proteins, Bcl-x_L, Mcl-1 and Bim. At 24 h after exposure to LA, no protein variation was detected (data not shown). Anti-apoptotic Mcl-1 protein

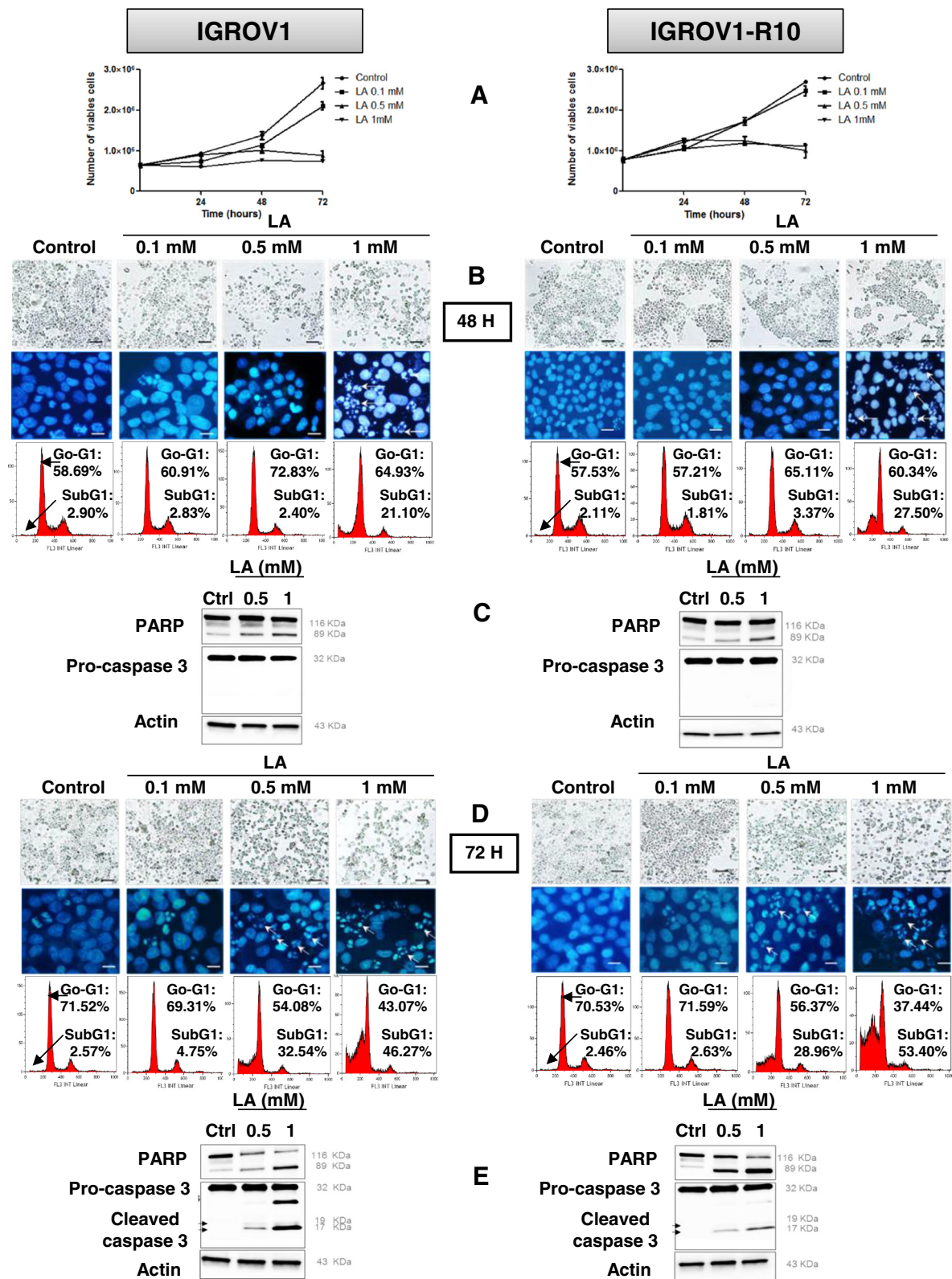


Fig. 1 (See legend on next page.)

(See figure on previous page.)

Fig. 1 Lipoic acid induces apoptosis in IGROV1 and IGROV1-R10 ovarian carcinoma cell lines. IGROV1 (left panel) and IGROV1-R10 (right panel) were treated to a continuous exposure to 0.1; 0.5 and 1 mM of lipoic acid (LA) and effects of this treatment were analyzed after 48 h and 72 h. **a:** Cell Viability was expressed as number of viable cells determined by the trypan blue exclusion method. Graphics were realized and are presented as means \pm standard errors of the means (SEM) of three independent experiments using GraphPad Prism5 software. **b** and **d:** Morphological features of the cells observed by photon microscopy (upper line of each panel) and nuclear features of the cells after DAPI staining (middle line of each panel) were then studied, Bars: 20 μ m. DNA content histograms obtained by flow cytometry (lower line of each panel) after a 48 h treatment (**b**) or a 72 h treatment (**d**). For each condition, the percentage in sub-G1 and G0-G1 phases is indicated. **c** and **e:** Protein expression levels of PARP (native and cleaved forms), caspases-3 (pro and cleaved forms) were assessed in control or LA-treated (0.5 or 1 mM) cells at 48 h (**c**) and 72 h (**e**) by western blot using a specific anti-PARP and anti-caspase-3 antibody. Expression of actin was measured as a loading control. Western blots shown are from one experiment representative of at least three independent experiments and cell lysates

level was reduced in a concentration-dependent manner after a 48 h exposure to LA 0.5 - 1 mM in both cell lines (Fig. 2a upper panel) and Mcl-1 expression was almost abolished after 72 h exposure to the LA concentrations (Fig. 2b lower panel), and was concomitant with the induction of apoptosis (PARP cleavage, caspase-3 activation) (Fig. 1e). For the same conditions, a concomitant reduction of Bcl-x_L level was found (around 20-30 %) (Fig. 2b lower panel).

Interestingly, Bim was induced by LA in a dose and time-dependent manner with occurrence of BimEL and BimS forms at 72 h (Fig. 2a and b).

To determine whether the inhibition of Mcl-1 protein and the increase of Bim were due to a reduction of mRNA, we performed qRT-PCR. Whatever the time and the LA concentration, no decrease in Mcl-1 mRNA was observed (Fig. 3a). On the contrary, LA induced a low up-regulation of Bim mRNA in both cell lines (Fig. 3b).

siRNA-mediated Bim inhibition decreases the cell death in response of lipoic acid

To study the importance of Bim in the response of our model to LA, we tested the impact of Bim targeting by siRNA on cell death of IGROV1 and IGROV1-R10, 24 h after transfection exposed to LA 1 mM (Fig. 4a). We first checked the efficacy by showing a complete extinction of this protein in both cell lines after 48 h of siRNA transfection. In contrary, Bim expression was not modified in transfected cells with control siRNA (siCTRL) (Fig. 4b).

siBim combination with LA (1 mM) abrogated the cytotoxic effect of LA. Indeed, 48 h after treatment, a decrease percentage of cells in sub-G1 peak, reaching 15 % for IGROV1 and 9 % for IGROV1-R10 was observed when Bim was silenced, as compared to cells treated with LA alone, (Fig. 4c right column of each panel and Fig. 4d right column of each panel).

The DAPI nuclear staining confirmed these results, showing in both cell lines that exposure with siBim and LA 1 mM, strongly decreased these nuclear characteristics of apoptosis (nuclear condensations and fragmentations), which were strongly observed in response to LA treatment alone (Fig. 4c middle column of each panel and Fig. 4d middle column of each panel).

We investigated the impact of targeting Bim by siRNA on the apoptosis induction in our models 48 h after LA treatment. In response to siBim and LA exposure, we observed an inhibition of caspase-3 cleavage and also a decrease of Mcl-1 and Bcl-x_L proteins (Fig. 4e). These results demonstrate that Bim is involved in LA-mediated apoptosis despite a decrease of two anti-apoptotic proteins in IGROV1 and IGROV1-R10 cells.

Lipoic acid may induced the Endoplasmic Reticulum stress response and accumulation of ROS

Because Bim is frequently induced by Endoplasmic Reticulum (ER) stress response via the C/EBP homologous protein (CHOP) expression, we investigated this pathway in response to LA by detecting CHOP. CHOP was strongly expressed at 72 h in IGROV1-R10 from LA 0.5 mM (Fig. 5a right panel) and was correlated with the induction of Bim expression (Fig. 2b right panel).

In order to determine whether LA treatment generates the ROS in our models, we measured by a converting reaction of DCFH₂-DA to DCF 3 h and 6 h after LA exposure.

At 0.5 mM LA, we measured a slightly increased ROS generation in IGROV1 and IGROV1-R10 cells from 3 h and more important at 6 h in IGROV1-R10 vs IGROV1 cells (data not shown). However, the ROS production was more efficient at 1 mM LA whatever the time after treatment (e.g. at 6 h 140 % in IGROV1 and 170 % in IGROV1-R10) (Fig. 5b-c). Interestingly, pretreatment with ROS scavenger NAC (3 mM) decreased α -LA-induced ROS (Fig. 5b-c).

Discussion

Ovarian cancer is the fifth most frequent cause of cancer death in women, often diagnosed at an advanced stage. Despite radical surgery and a frequent good response to a first-line platinum-based chemotherapy, the 5-year survival rate is about 20 % - 30 % for stage III and IV disease [35]. Thus, discovery of new treatments is fundamental to overcome chemoresistance and improve survival. In this perspective, lipoic acid (LA) molecule which demonstrated a low toxicity in various pathologies (in particular, neurological sequels of chemotherapies)

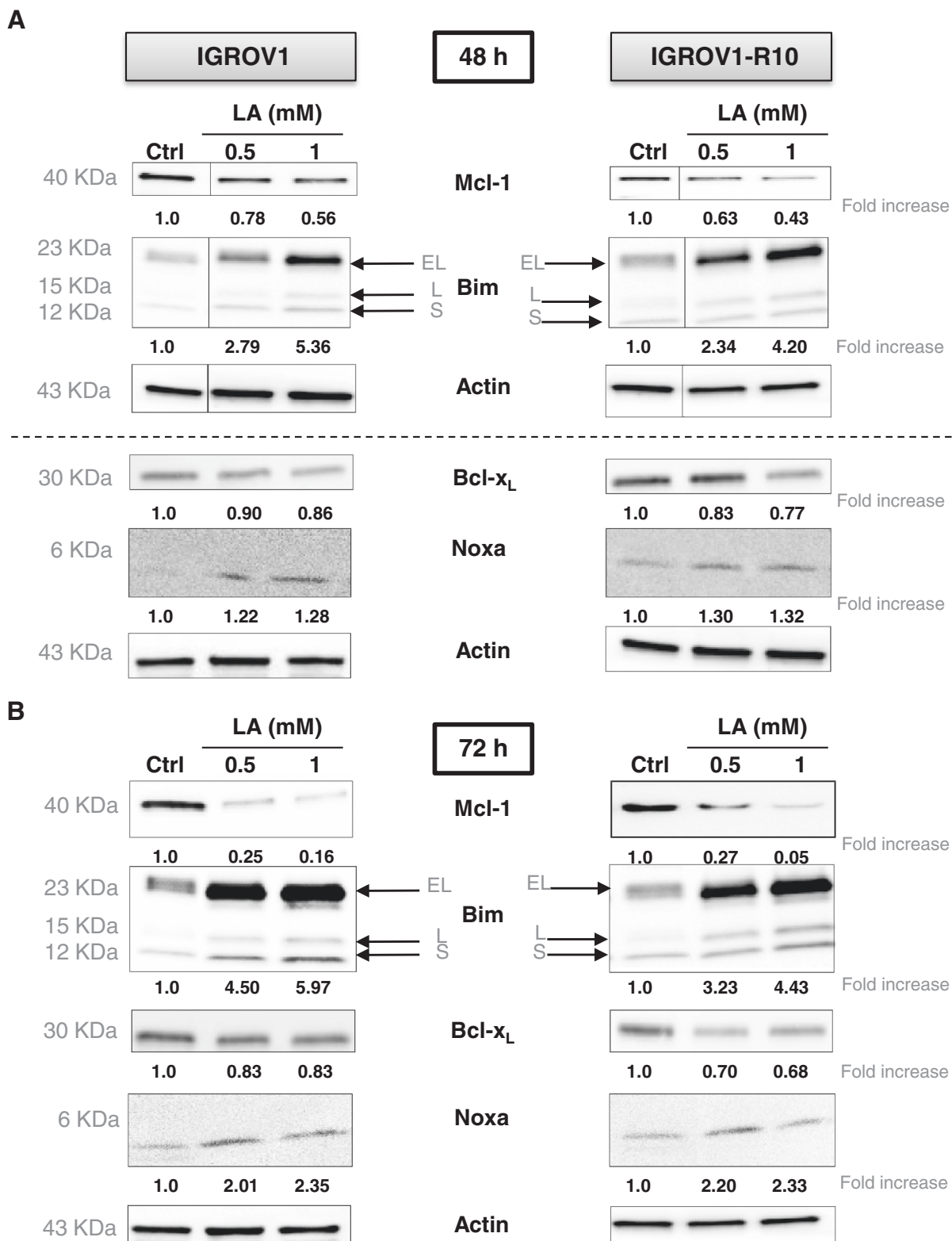


Fig. 2 (See legend on next page.)

(See figure on previous page.)

Fig. 2 Lipoic acid modulates Bcl-2 proteins family expressions. After 48 h (a) or 72 h (b) of LA treatment on IGROV1 (left panel) and IGROV1-R10 (right panel) cell lines, whole cell lysates were immunoblotted for the indicated proteins and actin was loaded as control. The relative densitometry values were quantified by Image J® software and are shown on the bottom. Western blots shown are from one experiment representative of at least three independent experiments and cell lysates. Moreover, on Fig. 2a, there are two different strips of actin both blots were carried out independently of one another

could be essential to be tested clinically, if its efficiency is demonstrated in preclinical studies.

In this study, we demonstrated in two human ovarian cancer cell lines, one highly chemoresistant, that LA suppressed the proliferation and induced the cell death in both cell lines by decreasing of Mcl-1 and Bcl-x_L expression, two anti-apoptotic proteins; whereas the induction of CHOP could promote Bim transcription.

In our study, the inhibition of proliferation was time- and concentration-dependent, and was in accordance with other studies in breast, neuroblastoma, colon, and bladder cancer cells [6, 9, 11]. We showed that LA treatment provokes the cell detachment in flasks. This phenomenon could be due to down-regulation of β1-

integrin expression [36] and reduces the MMPs-2 and MMP-9 activities [37]. Thus, all data show that LA has the high capacity to inhibit cell growth of numerous cancer cell lines.

First, in cellular cycle and morphology studies, we showed that LA treatment resulted in a slight reduction in the growth through the G1 arrest of the cell cycle, a result in agreement with previous studies [7, 10]. The arrest of the cell cycle was accompanied by a cellular accumulation in the sub-G1 phase, which is a characteristic of cell death. The nuclear morphology revealed fragmentation and condensation which are typical of apoptosis. This apoptosis was also supported by PARP and complete caspase-3 cleavages, in particular at 72 h of

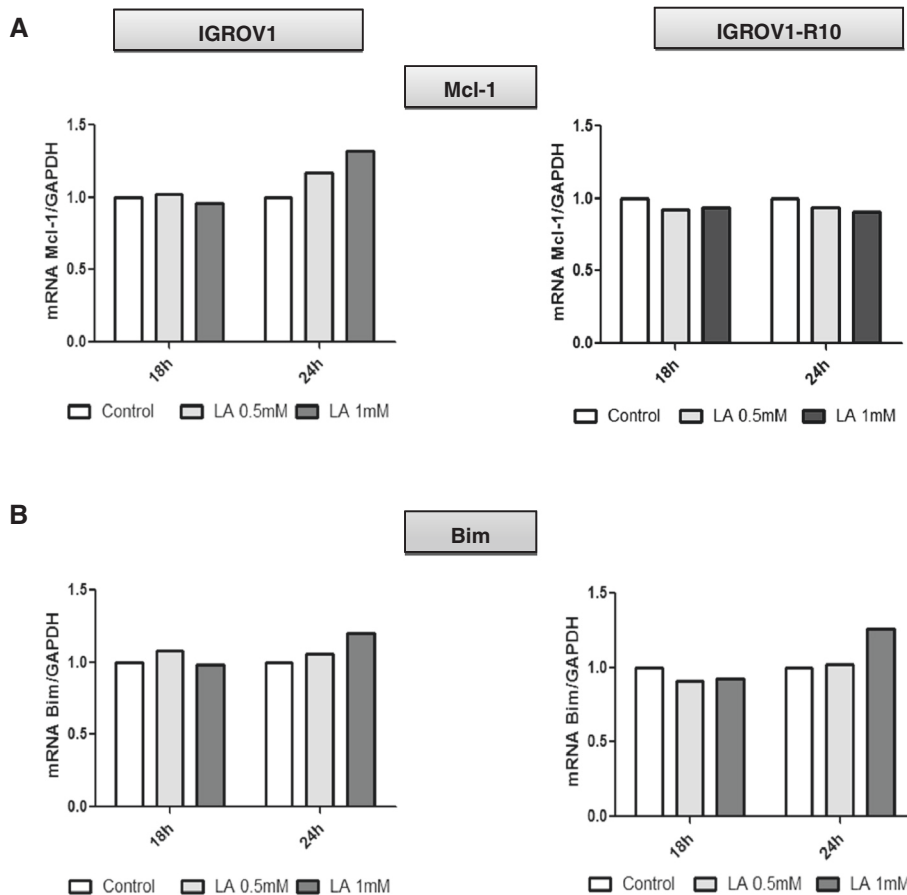


Fig. 3 Lipoic acid regulates Mcl-1 and Bim mRNA levels. Mcl-1 (a) and Bim (b) mRNA levels in IGROV1 (left panel) and IGROV1-R10 (right panel) treated with LA different times was assessed by real-time quantitative reverse transcription PCR. Data are normalized with GAPDH mRNA levels used as an endogenous control. Results are expressed as relative to the levels in control cells set as one. This analysis was performed only 2 times

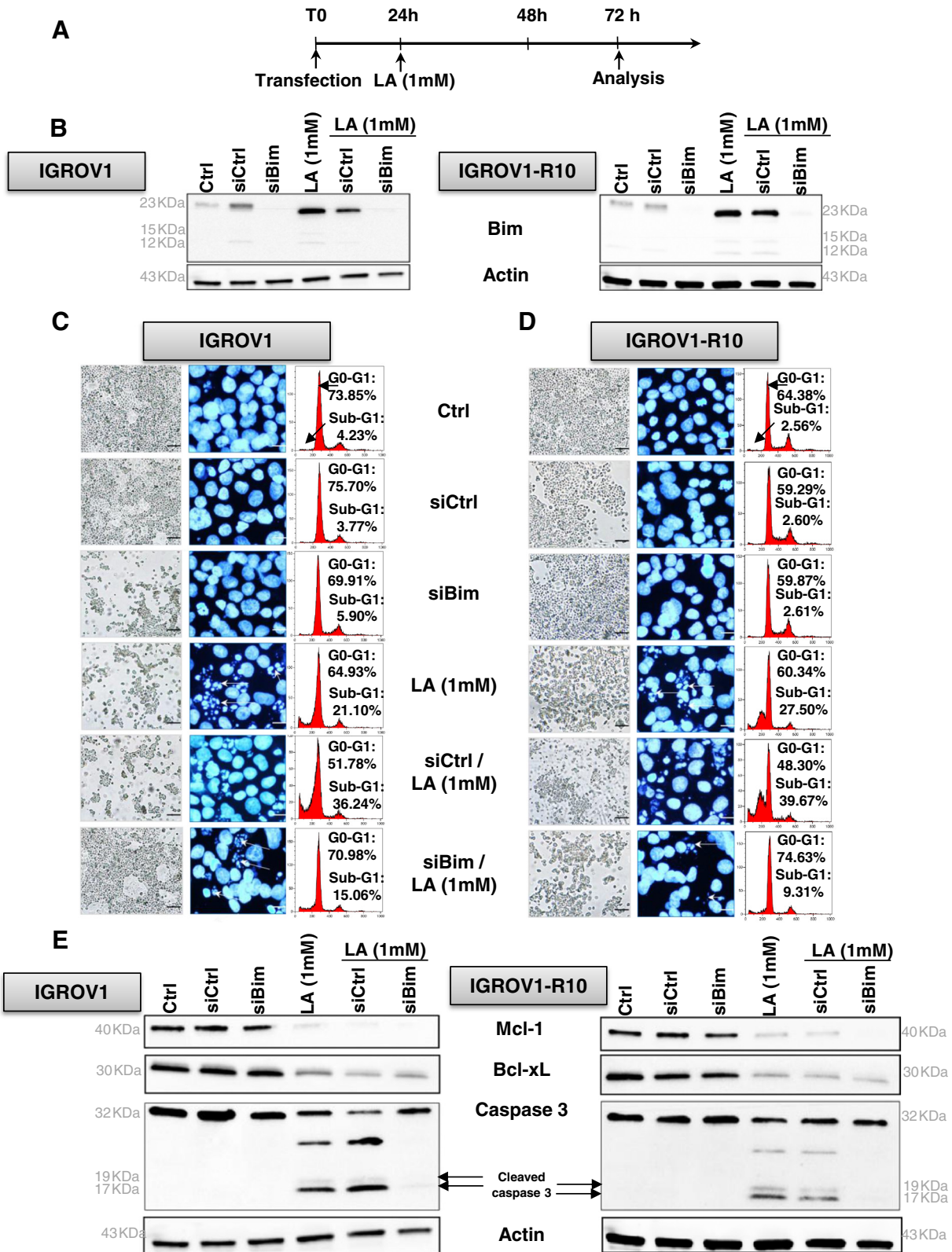


Fig. 4 (See legend on next page.)

(See figure on previous page.)

Fig. 4 siBim attenuates lipoic acid induced-apoptosis 72 h after transfection. **a:** The cells were treated following protocol of exposure regarding the treatment by lipoic acid (1 mM) administered 24 h after transfection with either 20nM nonspecific siRNA control (siCTRL) or siBim, as described in materials and methods section. **b:** Bim protein expression level was assessed in control or treated-cells at 72 h post-transfection of IGROV1 (left panel) and IGROV1-R10 (right panel) by western blot. Actin protein is used as a loading control. Actin is a same actin that in Fig. (4e). This blot was performed in the same experiment as that of blot in Fig. 4e. Western blots shown come from one experiment representative of at least three independent experiments and cell lysates. **c-d:** Morphological features of the cells observed by photon microscopy (left column of each panel) and nuclear features of the cells after DAPI staining (middle column of each panel) were then studied, Bars: 20 μm. DNA content histograms obtained by flow cytometry (right column of each panel) after a 48 h of LA treatment in IGROV1 [c] and IGROV1-R10 [d] cell lines were studied. For each condition, the percentage of sub-G1 and G0-G1 phases is indicated. **e:** Bcl-x_L, Mcl-1, caspases-3 (pro and cleaved forms) protein expression levels were assessed in control or treated-cells at 72 h post-transfection of IGROV1 (left panel) and IGROV1-R10 (right panel) by western blot. Actin protein is used as a loading control. Actin is a same actin that in Fig. (4b). This blot was performed in the same experiment as that of blot in Fig. 4b. Western blots shown are from one experiment representative of at least three independent experiments and cell lysates

treatment in both cell lines. However, a more rapid caspase 3 cleaved was observed in Fig. 4e. It is likely that this difference is due to the transfection process. Indeed to make a transfection, the flasks were seeded with 375 000 cells (results presented in Fig. 4e), less than the 500 000 cells required to seed both cells lines for none transfected experiments (Fig. 1c-e). Thus, it is likely that the difference in seeding accelerates the effect of LA. In that

sense, the cleavage of caspase 3, was weaker in Fig. 4e, an attenuation that could indicate a cleavage starting at this time.

It is also noteworthy that LA induced from 48 h, a complete down expression of Mcl-1, an anti-apoptotic protein often up-regulated in cancer cells [25, 38, 39]. LA induced also a strong up-regulation of Bim, a BH3-only protein which is essential for apoptosis of various

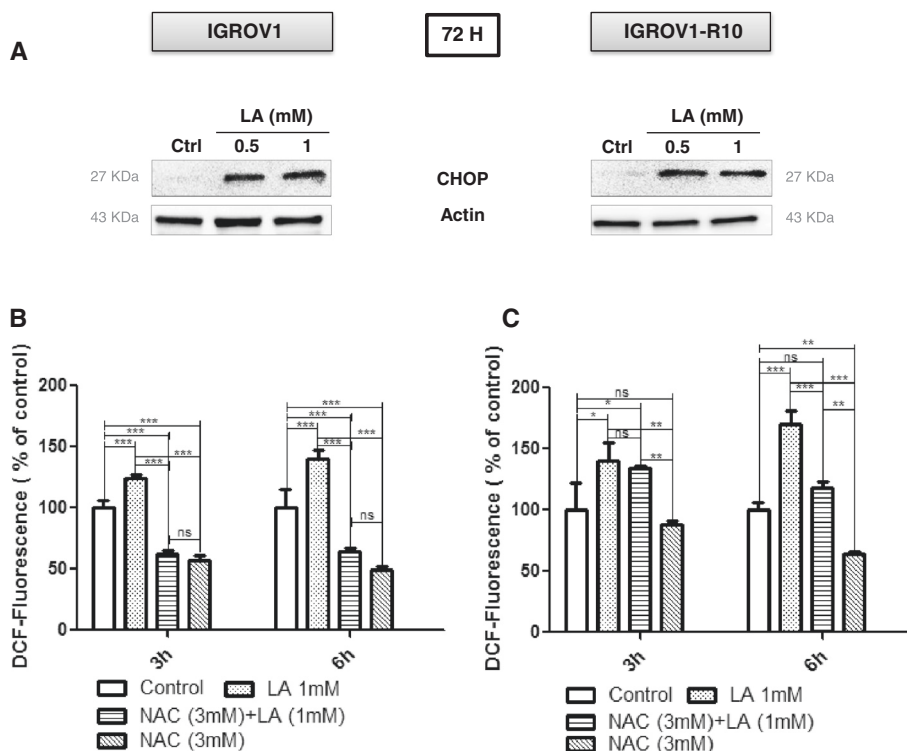


Fig. 5 Lipoic acid induces ER stress and increases ROS generation in IGROV1 and IGROV1-R10. **a:** ER stress protein expression was assessed in IGROV1 (left panel) and IGROV1-R10 (right panel) cell lines by immunoblot using an antibody which recognizes CHOP protein. The blot shown is representative of three independent experiments and cell lysates. **b-c:** ROS production was measured by flow cytometry using CM-DCFH2-DA probe. Histograms show that 3 or 6 h of LA treatment (1 mM) increased ROS production compared to control and ROS scavenger (NAC). Bars represent the mean of $n = 3$ independent biological replicates \pm SEM. Graphics were realized and are presented using GraphPad Prism5 software. ROS levels in treated vs no treated cells in IGROV1 or IGROV1-R10 were analyzed by One-way analysis of variance (ANOVA) with post hoc analysis using Newman-Keuls multiple comparison test was used for parametric data. A p value of <0.05 was considered statistically significant. * $p < 0.5$; ** $p < 0.1$; *** $p < 0.01$

cell types, including epithelial cells, endothelial cells, neurons, and lymphocytes [18, 40]. We next investigated the impact of siRNA-mediated Bim inhibition on the apoptosis of IGROV1 and IGROV1-R10 cells, in response to LA exposure (1 mM). We observed in the Fig. 4b that siCTRL + LA induced a slowly decrease of Bim expression protein in both cell lines whereas there were an increase of cell death (subG1 peak) in both cell lines. This “contradictory” result is very likely due to the transfection process, which weakens some cells, leading a part of them to cell death. In this condition, Bim silencing diminished apoptotic cell death, as observed by the morphological and nuclear features (Fig. 4b-c left

column of each panel). Cell cycle analysis by cytometry revealed that siBim followed by LA (1 mM) reduced the drop of cells in sub-G1 peak, as compared LA treatment alone: 15 % vs 21.1 % in IGROV1 and 9.3 % vs 27.5 % in IGROV1-R10 cells (Fig. 4b-c right column of each panel).

Likewise, Bim silencing is correlated with an absence of activated-caspase-3 and of PARP cleavage after LA exposure. In consequence, this loss of Bim expression seemed to partially protect our ovarian carcinoma cell lines from death. Similarly, a low expression level of Bim was found significantly correlated with poor survival, notably for patients with melanomas [41] and glioblastomas multiform [42].

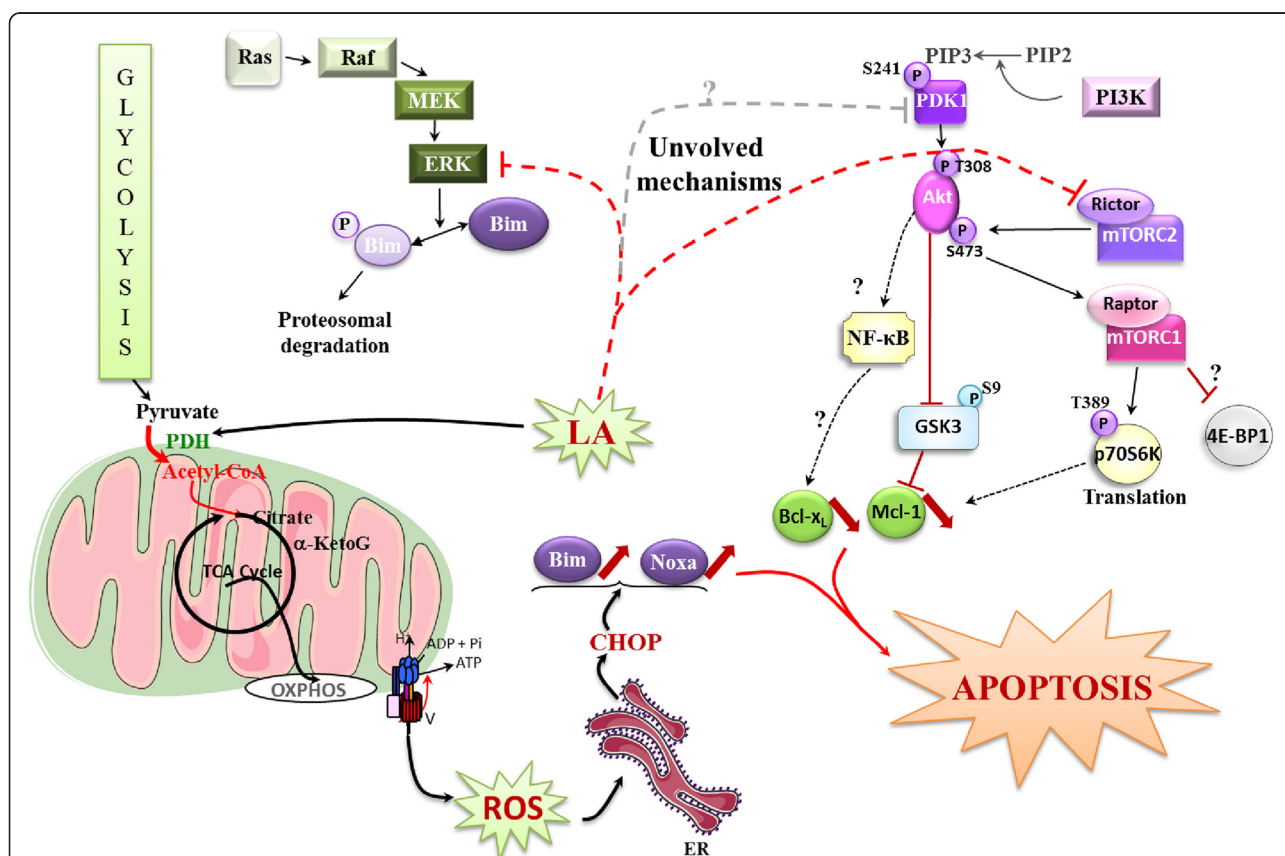


Fig. 6 Schematic representation of the role of liponic acid in sensitive or chemoresistant ovarian carcinoma cells. LA induces major apoptosis by up-regulation of Bim associated with down-regulation of Bcl-x_L and Mcl-1. In explaining the Bim induction, the role of CHOP is highly suggested. CHOP induction would result from the over production of ROS induced by the reconnection of the TCA cycle and glycolysis induced by LA. In the metabolism of cancer cells, a disconnection between glycolysis and TCA cycle favours cancer cells growth. Liponic acid reactivates PDH activity and thus, reconnects the glycolysis to the TCA cycle. This process leads to cell death presumably by generating oxidative stress characterized by ROS production. ROS promote ER stress; a process inducing CHOP expression. This expression upregulates the BH3 only pro-apoptotic factor Bim. On the other hand, LA is involved in the inhibition of Bcl-x_L and Mcl-1, two major anti-apoptotic proteins, which conspire with bim to induce major apoptotic death. We suppose that the inhibition of Bcl-x_L and Mcl-1 translates by the inactivation of PI3K/Akt/mTOR and ERK pathways, characterized by a decrease of various targets (such as PDK1, AKT, mTORC1, p70S6K...) leading to activation of GSK3. These assumptions which remain to be studied, are shown in blurred. Abbreviations: Acetyl-CoA: acetyl coenzyme a, α-KetoG: α-Ketoglutarate, OXPHOS: oxidative phosphorylation, ER: endoplasmic reticulum, Bim: Bcl-2 interacting mediator of cell death, PI3K: Phosphoinositide 3 kinase, PIP2: Phosphoinositide (3,4) biphosphate, PIP3: Phosphoinositide (3,4,5) triphosphate, mTORC1 or 2: mammalian target of rapamycin complex 1 or 2, Akt: protein kinase B, p70S6K: p70 S6 kinase, 4-EBP1: 4-E binding protein 1, GSK3: glycogen synthase kinase 3, NF-κB: nuclear factor-kappaB, Mcl-1: myeloid cell leukemia sequence 1, Ras: Rous Avian Sarcoma, MEK: MAPK/ERK kinase, ERK: extracellular signal-regulated MAP kinase

The up-regulation of Bim under LA treatment prompted us to investigate other anti-apoptotic proteins such Bcl-x_L and Mcl-1, but not Bcl-2, which was not expressed in our cells. Both Bcl-x_L and Mcl-1 have been implicated to protect ovarian cancer cells from chemotherapy-induced apoptosis [23, 43], their concomitant decrease appearing essential to trigger the cell death [25].

In our study, we observed that LA treatment decreased Bcl-x_L expression (around 20-30 % vs control cells) more effectively than in the chemoresistant IGROV1-R10 cell lines. This treatment was more effective on the reduction of Mcl-1 expression (around 20-60 %) which was observed earlier, since 48 h after exposure (Fig. 2a upper panel).

The mechanisms which link LA treatment with the decrease of Bcl-x_L expression remain to be further studied. However, in order to explain the decrease of Bcl-x_L expression, we can hypothesize that this decrease could be due to the inactivation of Akt which induced a down-regulation of one of its target, NF-κB. Indeed, NF-κB expression has been widely observed in diverse tumor types, in response to hyperactivation of Akt [44], and protects cells against cell death through activation of genes such as Bcl-2 and Bcl-x_L [45].

In parallel, we explored the role of ROS production in the up-regulation, knowing that LA is known to induce apoptosis via the production of ROS during mitochondrial respiration from 0.5 mM [15, 46]. Because, this ROS production could be involved in the CHOP induction which is known to activate the Bim translation [47], we studied Bim expression. We found a moderately increase in the level of the *bim* mRNA upon treatment with LA (1 mM) (Fig. 3b), although it was difficult to assert if this increase was significant. Another explanation is that the high expression of CHOP and Bim should be due, at least in part, to the stabilization of these proteins, which are not properly degraded. In that sense, ROS could induce a high ER stress, leading to misfolded proteins. These proteins should be degraded in first by the proteasome and thus, Bim and CHOP would be not degraded as rapidly as they are produced. Furthermore, the ROS production is associated with the induction of proteasome activity leading to the down-regulation of anti-apoptotic proteins such as cellular inhibitor of apoptosis protein 1 and 2 (cIAP-1 and -2) and Mcl-1 [48]. Thus, in our conditions, LA slightly increase the ROS production which also might be down-regulate the Mcl-1 expression. ROS have been shown to be initiators and major contributors of endoplasmic reticulum (ER) stress [49]. Whereas numerous investigations revealed that ER stress could be either a cause, or a result, of increased ROS generation [50], we investigated if the CHOP, a pro-apoptotic transcription factor, was induced by ER stress [51]. We observed that LA treatment highly induced CHOP, which is known to

bind an element in the promoter of the gene encoding Bim protein [47]. This induction of CHOP was associated with concomitant Bim and Noxa up-regulation (Fig. 2a-b), two factors crucial for induction of executing apoptosis [50, 52, 53]. Because LA induced Mcl-1 down-regulation and knowing that ER stress was known to induce Bim and Noxa upregulation [53]. Then, we investigated Noxa expression. In response to LA exposure, we observed an induction of Noxa in dose and time-dependent manner. This expression of Noxa is in line with CHOP expression associated with ER stress [53]. Moreover, the PERK protein plays a major role in tethering the ER to mitochondria thereby promoting the rapid transfer of ROS signals [51, 53].

In summary, we demonstrated that LA induced massive apoptotic cell death through inhibition of the two anti-apoptotic proteins Mcl-1 and Bcl-x_L, and induction of the pro-apoptotic BH3-only protein Bim in two human ovarian cancer cells (one sensitive and one resistant to cisplatin). We found the induction of Bim was crucial in this process, because its blockage by siBim drastically reduced apoptosis. We showed that LA promoted massive cell death through an increase of ROS, a phenomenon that could lead to Bim, Noxa through CHOP induction (Fig. 6). The pan-inhibitor effects of LA could be further investigated and incite to test this molecule *in vivo* studies [11, 54].

Abbreviations

CHOP: C/EBP homologous protein (CHOP); LA: Lipoic acid; PDK1: Phosphoinositide-dependent kinase-1; PERK: protein kinase RNA-like endoplasmic reticulum kinase; PDH: Pyruvate dehydrogenase; PFK1: Phosphofructokinase 1; NAC: N-acetylcysteine; ROS: Reactive oxygen species; SDH: Succinate dehydrogenase; TCA: Tricarboxylic acid cycle.

Competing interests

The authors declare that they have no competing interests.

Authors' contributions

PK and MG have made substantial contributions to conception and design, or acquisition of data, or analysis and interpretation of data. PI, LS and HL have been involved in drafting the manuscript or revising it critically for important intellectual content. PI and HL have given final approval of the version to be published. Each author has participated sufficiently in the work to take public responsibility for appropriate portions of the content. All authors agree to be accountable for all aspects of the work.

Acknowledgments

This work was supported by the Ministère de l'Enseignement Supérieur et de la Recherche, the "Ligue Contre le Cancer" (Calvados and Manche committees) and the Crédit Agricole. Perrine Kafara was the recipient of a doctoral fellowship from the "Association Coeur et Cancer".

Author details

¹INSERM, U 1199, Unité BioTICLA, Caen F-14032, France. ²Normandie Université France, Caen, France. ³Centre de Lutte Contre le Cancer François Baclesse, Avenue du Général Harris, Caen, BP5026 14076 Cedex 05, France. ⁴UMR 7161, Laboratoire d'Informatique LIX, Ecole Polytechnique, 91128 Palaiseau Cedex, France. ⁵UMR INSERM U1052, CNRS 5286, Centre de Recherche en Cancérologie de Lyon, Lyon, France. ⁶ISPB, Faculté de Pharmacie de Lyon, 8 avenue Rockefeller, F69373 Lyon, Cedex 08, France. ⁷Université de Lyon 1, Lyon, France.

Received: 16 March 2015 Accepted: 2 June 2015

Published online: 12 June 2015

References

- Bilska A, Wlodek L. Lipoic acid - the drug of the future? *Pharmacol Rep.* 2005;57:570–7.
- Packer L, Roy S, Sen CK. Alpha-lipoic acid: a metabolic antioxidant and potential redox modulator of transcription. *Adv Pharmacol.* 1997;38:79–101. 79–101.
- Shay KP, Moreau RF, Smith EJ, Smith AR, Hagen TM. Alpha-lipoic acid as a dietary supplement: molecular mechanisms and therapeutic potential. *Biochim Biophys Acta.* 1790;2009:1149–60.
- Packer L, Kraemer K, Rimbach G. Molecular aspects of lipoic acid in the prevention of diabetes complications. *Nutrition.* 2001;17:888–95.
- de Oliveira AM, Rondo PH, Luzia LA, D'Abronzio FH, Illison VK. The effects of lipoic acid and alpha-tocopherol supplementation on the lipid profile and insulin sensitivity of patients with type 2 diabetes mellitus: a randomized, double-blind, placebo-controlled trial. *Diabetes Res Clin Pract.* 2011;92:253–60.
- Feueracker B, Pirsig S, Seidl C, Aichler M, Feuchtinger A, Bruchelt G, et al. Lipoic acid inhibits cell proliferation of tumor cells in vitro and in vivo. *Cancer Biol Ther.* 2012;13:1425–35.
- Yoo TH, Lee JH, Chun HS, Chi SG. alpha-Lipoic acid prevents p53 degradation in colon cancer cells by blocking NF-kappaB induction of RPS6KA4. *Anticancer Drugs.* 2013;24:555–65.
- Na MH, Seo EY, Kim WK. Effects of alpha-lipoic acid on cell proliferation and apoptosis in MDA-MB-231 human breast cells. *Nutr Res Pract.* 2009;3:265–71.
- Michikoshi H, Nakamura T, Sakai K, Suzuki Y, Adachi E, Matsugo S, et al. alpha-Lipoic acid-induced inhibition of proliferation and met phosphorylation in human non-small cell lung cancer cells. *Cancer Lett.* 2013;335:472–8.
- Dozio E, Ruscica M, Passafaro L, Dogliotti G, Steffani L, Marthyn P, et al. The natural antioxidant alpha-lipoic acid induces p27(Kip1)-dependent cell cycle arrest and apoptosis in MCF-7 human breast cancer cells. *Eur J Pharmacol.* 2010;641:29–34.
- Schwartz L, Guais A, Israel M, Junod B, Steyaert JM, Crespi E, et al. Tumor regression with a combination of drugs interfering with the tumor metabolism: efficacy of hydroxycitrate, lipoic acid and capsaicin. *Invest New Drugs.* 2013;31:256–64.
- Vig-Varga E, Benson EA, Limb TL, Allison BM, Goebel MG, Harrington MA. Alpha-lipoic acid modulates ovarian surface epithelial cell growth. *Gynecol Oncol.* 2006;103:45–52.
- Cremer DR, Rabeler R, Roberts A, Lynch B. Safety evaluation of alpha-lipoic acid (ALA). *Regul Toxicol Pharmacol.* 2006;46:29–41.
- Piotrowski P, Wierzbicka K, Srnialek M. Neuronal death in the rat hippocampus in experimental diabetes and cerebral ischaemia treated with antioxidants. *Folia Neuropathol.* 2001;39:147–54.
- Simbula G, Columbano A, Ledda-Columbano GM, Sanna L, Deidda M, Diana A, et al. Increased ROS generation and p53 activation in alpha-lipoic acid-induced apoptosis of hepatoma cells. *Apoptosis.* 2007;12:113–23.
- Garcia-Saez AJ. The secrets of the Bcl-2 family. *Cell Death Differ.* 2012;19:1733–40.
- Goldstein JC, Waterhouse NJ, Juin P, Evan GI, Green DR. The coordinate release of cytochrome c during apoptosis is rapid, complete and kinetically invariant. *Nat Cell Biol.* 2000;2:156–62.
- Zhang LN, Li JY, Xu W. A review of the role of Puma, Noxa and Bim in the tumorigenesis, therapy and drug resistance of chronic lymphocytic leukemia. *Cancer Gene Ther.* 2013;20:1–7.
- Krishna S, Low IC, Pervaiz S. Regulation of mitochondrial metabolism: yet another facet in the biology of the oncoprotein Bcl-2. *Biochem J.* 2011;435:545–51.
- Brotin E, Meryet-Figuère M, Simonin K, Duval RE, Villedieu M, Leroy-Dudal J, et al. Bcl-XL and MCL-1 constitute pertinent targets in ovarian carcinoma and their concomitant inhibition is sufficient to induce apoptosis. *Int J Cancer.* 2010;126:885–95.
- Villedieu M, Deslandes E, Duval M, Heron JF, Gauduchon P, Poulain L. Acquisition of chemoresistance following discontinuous exposures to cisplatin is associated in ovarian carcinoma cells with progressive alteration of FAK, ERK and p38 activation in response to treatment. *Gynecol Oncol.* 2006;101:507–19.
- Lincet H, Kafara P, Giffard F, Abeillard-Lemoisson E, Duval M, Louis MH, et al. Inhibition of Mcl-1 expression by citrate enhances the effect of Bcl-xL inhibitors on human ovarian carcinoma cells. *J Ovarian Res.* 2013;6:72.
- Varin E, Denoyelle C, Brotin E, Meryet-Figuère M, Giffard F, Abeillard E, et al. Downregulation of Bcl-xL and Mcl-1 is sufficient to induce cell death in mesothelioma cells highly refractory to conventional chemotherapy. *Carcinogenesis.* 2010;31:984–93.
- Li G, Zhang S, Fang H, Yan B, Zhao Y, Feng L, et al. Aspirin overcomes Navitoclax-resistance in hepatocellular carcinoma cells through suppression of Mcl-1. *Biochem Biophys Res Commun.* 2013;434:809–14.
- Simonin K, N'diaye M, Lheureux S, Loussouarn C, Dutoit S, Briand M, et al. Platinum compounds sensitize ovarian carcinoma cells to ABT-737 by modulation of the Mcl-1/Noxa axis. *Apoptosis.* 2013;18:492–508.
- Zhang X, Varin E, Allouche S, Lu Y, Poulain L, Icard P. Effect of citrate on malignant pleural mesothelioma cells: a synergistic effect with cisplatin. *Anticancer Res.* 2009;29:1249–54.
- Meynet O, Zunino B, Haplo L, Pradelli LA, Chiche J, Jacquin MA, et al. Caloric restriction modulates Mcl-1 expression and sensitizes lymphomas to BH3 mimetic in mice. *Blood.* 2013;122:2402–11.
- WARBURG O. On the origin of cancer cells. *Science.* 1956;123:309–14.
- Icard P, Lincet H. A global view of the biochemical pathways involved in the regulation of the metabolism of cancer cells. *Biochim Biophys Acta.* 1826;2012:423–33.
- Kruspig B, Nilchian A, Orrenius S, Zhivotovsky B, Gogvadze V. Citrate kills tumor cells through activation of apical caspases. *Cell Mol Life Sci.* 2012;69:4229–37.
- Lepleux C, Abeillard-Lemoisson E, Duval M, Icard P, Lincet H. siPGK1 Sensitizes Chemoresistant Human Ovarian Cancer Cell Lines to Cisplatin. *Anticancer Res.* 2012;32:4277–86.
- Zhang X, Deslandes E, Villedieu M, Poulain L, Duval M, Gauduchon P, et al. Effect of 2-deoxy-D-glucose on various malignant cell lines in vitro. *Anticancer Res.* 2006;26:3561–6.
- Poulain L, Lincet H, Duigou F, Deslandes E, Sichel F, Gauduchon P, et al. Acquisition of chemoresistance in a human ovarian carcinoma cell is linked to a defect in cell cycle control. *Int J Cancer.* 1998;78:454–63.
- Jebahi A, Villedieu M, Petigny C, Brotin E, Louis MH, Abeillard E, et al. PI3K/mTOR dual inhibitor NVP-BE235 decreases Mcl-1 expression and sensitizes ovarian carcinoma cells to Bcl-x-targeting strategies, provided that Bim expression is induced. *Cancer Lett.* 2014;10.
- Cannistra SA. Cancer of the ovary. *N Engl J Med.* 2004;351:2519–29.
- Yamasaki M, Iwase M, Kawano K, Sakakibara Y, Suiko M, Ikeda M, et al. alpha-Lipoic acid suppresses migration and invasion via downregulation of cell surface beta1-integrin expression in bladder cancer cells. *J Clin Biochem Nutr.* 2014;54:18–25.
- Lee HS, Na MH, Kim WK. alpha-Lipoic acid reduces matrix metalloproteinase activity in MDA-MB-231 human breast cancer cells. *Nutr Res.* 2010;30:403–9.
- McKee CS, Hill DS, Redfern CP, Armstrong JL, Lovat PE. Oncogenic BRAF signalling increases Mcl-1 expression in cutaneous metastatic melanoma. *Exp Dermatol.* 2013;22:767–9.
- Simonin K, Brotin E, Dufort S, Dutoit S, Goux D, N'diaye M, et al. Mcl-1 is an important determinant of the apoptotic response to the BH3-mimetic molecule HA14-1 in cisplatin-resistant ovarian carcinoma cells. *Mol Cancer Ther.* 2009;8:3162–70.
- Roulston A, Muller WJ, Shore GC. BIM, PUMA, and the achilles' heel of oncogene addiction. *Sci Signal.* 2013;6, e12.
- Dai DL, Wang Y, Liu M, Martinka M, Li G. Bim expression is reduced in human cutaneous melanomas. *J Invest Dermatol.* 2008;128:403–7.
- Cartron PF, Loussouarn D, Campone M, Martin SA, Vallette FM. Prognostic impact of the expression/phosphorylation of the BH3-only proteins of the BCL-2 family in glioblastoma multiforme. *Cell Death Dis.* 2012;3:e421. doi:10.1038/cddis.2012.150. e421.
- Tomasina J, Malzert-Freon A, Giffard F, Brotin E, Louis MH, Abeillard E, et al. Sensitization of ovarian carcinoma cells to Bcl-xL-targeting strategies through indirect modulation of Mcl-1 activity by MR22388, a molecule of the triptentone family. *J Ovarian Res.* 2013;6:38–6.
- Aggarwal BB, Sung B. NF-kappaB in cancer: a matter of life and death. *Cancer Discov.* 2011;1:469–71.
- Casanellas E, Gozzelino R, Marques-Fernandez F, Iglesias-Guimaraes V, Garcia-Belinchon M, Sanchez-Osuna M, et al. NF-kappaB activation fails to protect cells to TNFalpha-induced apoptosis in the absence of Bcl-xL, but not Mcl-1, Bcl-2 or Bcl-w. *Biochim Biophys Acta.* 1833;2013:1085–95.
- Kleinkauf-Rocha J, Bobermin LD, Machado PM, Goncalves CA, Gottfried C, Quincozes-Santos A. Lipoic acid increases glutamate uptake, glutamine synthetase activity and glutathione content in C6 astrocyte cell line. *Int J Dev Neurosci.* 2013;31:165–70.

47. Puthalakath H, O'Reilly LA, Gunn P, Lee L, Kelly PN, Huntington ND, et al. ER stress triggers apoptosis by activating BH3-only protein Bim. *Cell*. 2007;129:1337–49.
48. Min KJ, Seo BR, Bae YC, Yoo YH, Kwon TK. Antipsychotic agent thioridazine sensitizes renal carcinoma Caki cells to TRAIL-induced apoptosis through reactive oxygen species-mediated inhibition of Akt signaling and downregulation of Mcl-1 and c-FLIP(L). *Cell Death Dis*. 2014;5:e1063. doi:10.1038/cddis.2014.35. e1063.
49. Yuzefovych LV, Ledoux SP, Wilson GL, Rachek LI. Mitochondrial DNA damage via augmented oxidative stress regulates endoplasmic reticulum stress and autophagy: crosstalk, links and signaling. *PLoS One*. 2013;8, e83349.
50. Sena LA, Chandel NS. Physiological roles of mitochondrial reactive oxygen species. *Mol Cell*. 2012;48:158–67.
51. Verfaillie T, Rubio N, Garg AD, Bultynck G, Rizzuto R, Decuypere JP, et al. PERK is required at the ER-mitochondrial contact sites to convey apoptosis after ROS-based ER stress. *Cell Death Differ*. 2012;19:1880–91.
52. Zhou Y, Shu F, Liang X, Chang H, Shi L, Peng X, et al. Ampelopsin Induces Cell Growth Inhibition and Apoptosis in Breast Cancer Cells through ROS Generation and Endoplasmic Reticulum Stress Pathway. *PLoS One*. 2014;9, e89021.
53. Verfaillie T, van VA, Garg AD, Dewaele M, Rubio N, Gupta S, et al. Pro-apoptotic signaling induced by photo-oxidative ER stress is amplified by Noxa, not Bim. *Biochem Biophys Res Commun*. 2013;438:500–6.
54. Schwartz L, Buhler L, Icard P, Lincet H, Steyaert JM. Metabolic treatment of cancer: intermediate results of a prospective case series. *Anticancer Res*. 2014;34:973–80.

**Submit your next manuscript to BioMed Central
and take full advantage of:**

- Convenient online submission
- Thorough peer review
- No space constraints or color figure charges
- Immediate publication on acceptance
- Inclusion in PubMed, CAS, Scopus and Google Scholar
- Research which is freely available for redistribution

Submit your manuscript at
www.biomedcentral.com/submit

