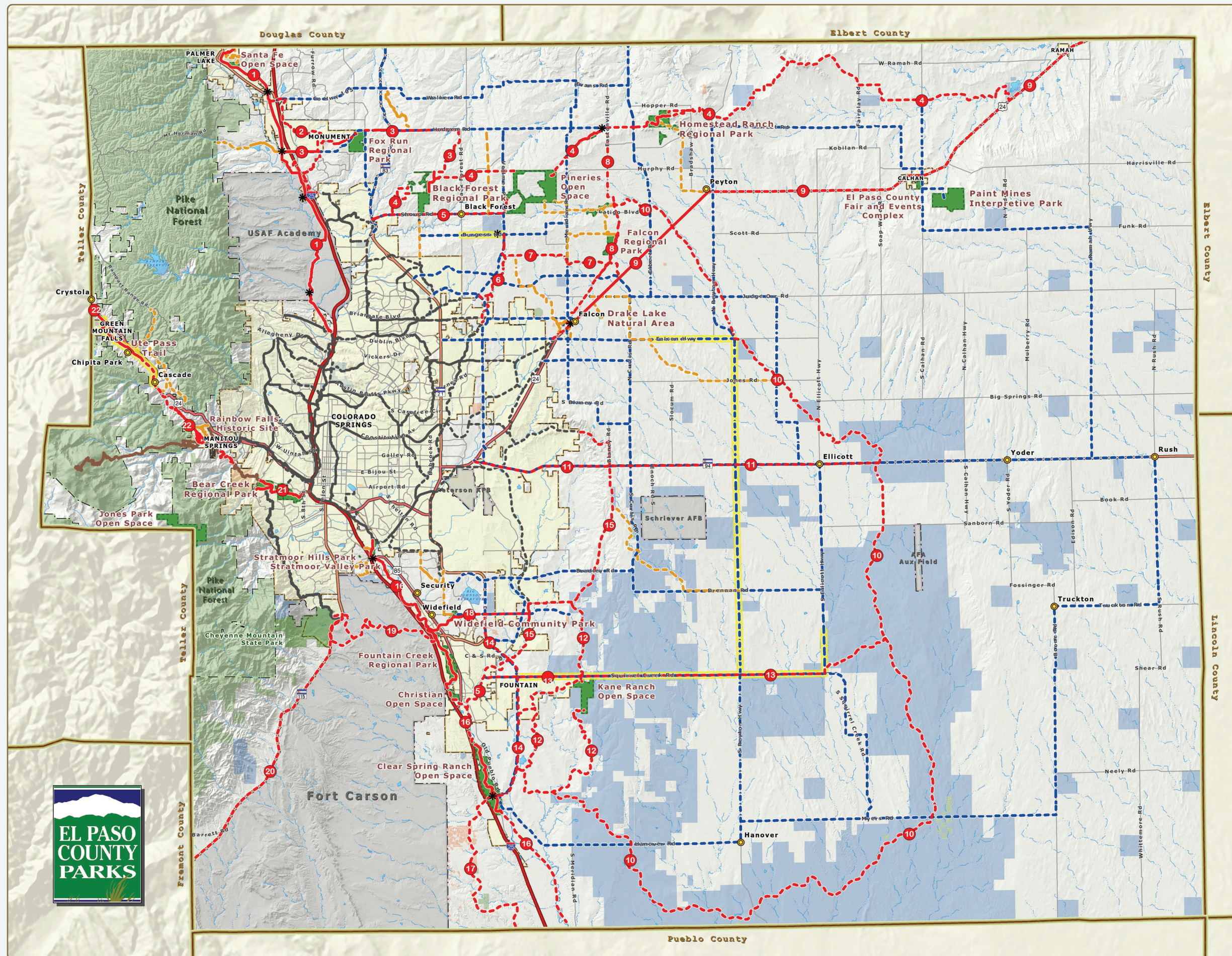


Trails Master Plan



Legend

Existing & Proposed Regional Trails

1 New Santa Fe Trail	12 Kane Ranch Trail
2 Jackson Creek Trail	13 Squirrel Creek Trail
3 Fox Run Trail	14 South Powers Blvd Trail
4 Palmer Divide Trail	15 Jimmy Camp Creek Trail
5 Black Forest Trail	16 Fountain Creek Trail
6 Sand Creek Trail	17 Fountain Creek West Trail
7 Arroya Lane Trail	18 Crews Gulch Trail
8 Eastonville Trail	19 Chamberlain Trail
9 Rock Island Trail	20 Highway 115 Trail
10 Great Plains Trail	21 Bear Creek Trail
11 Highway 94 Trail	22 Ute Pass Trail

Completed Primary Regional Trails
 Proposed Primary Regional Trails
 Completed Secondary Regional Trails
 Proposed Secondary Regional Trails
 Proposed Bicycle Routes
 Trails By Others
 Existing City Trails
 Proposed City Trails
 2040 MTCF Multimodal Projects

Base Map Information

* EPC Trailheads	Interstate Highways
EPC Parks	Major Highways
State Land Board	State Highways
Incorporated Cities	Major Roadways
Military Areas	Railroads
Pike National Forest	Lakes & Reservoirs
County Boundary	Creeks - Perennial
Unincorporated Towns	Creeks - Intermittent

Miles
 2 1 0 2 4 6 8 10
 Scale = 1:145,500

June 2022
 COPYRIGHT 2022 by the Board of County Commissioners, El Paso County, Colorado. All rights reserved. No part of this document or data contained herein may be reproduced, used to prepare derivative products, or distributed without the specific written approval of the Board of County Commissioners, El Paso County, Colorado. This document was prepared from the best data available at the time of printing. El Paso County, Colorado, makes no claim as to the completeness or accuracy of the data contained herein.

