



10/15/2020

TDG Architecture

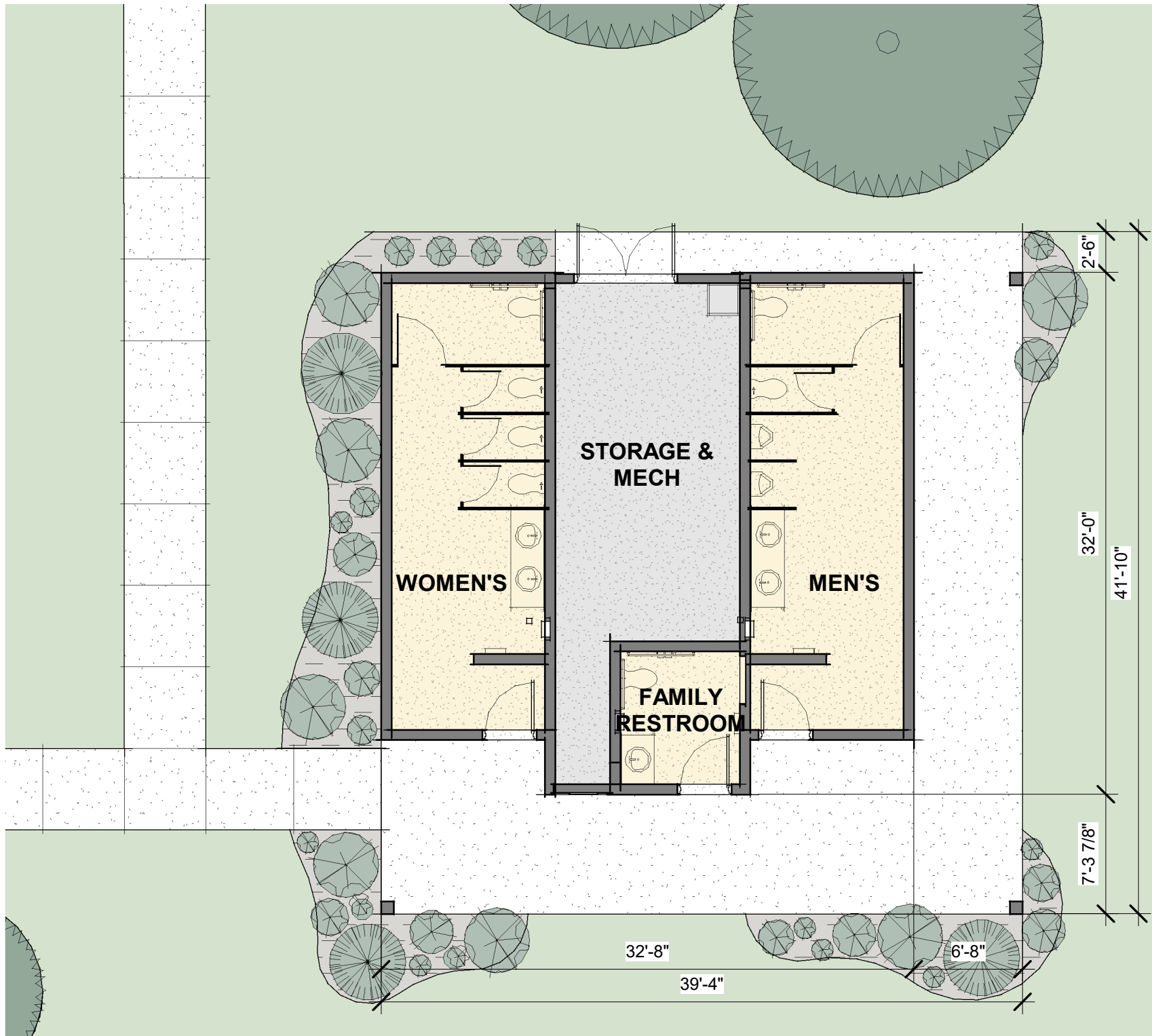
201 E. Las Animas Street, Ste. 113
 COS 80903 (719)623-5641

Site Plan

Bear Creek Restrooms

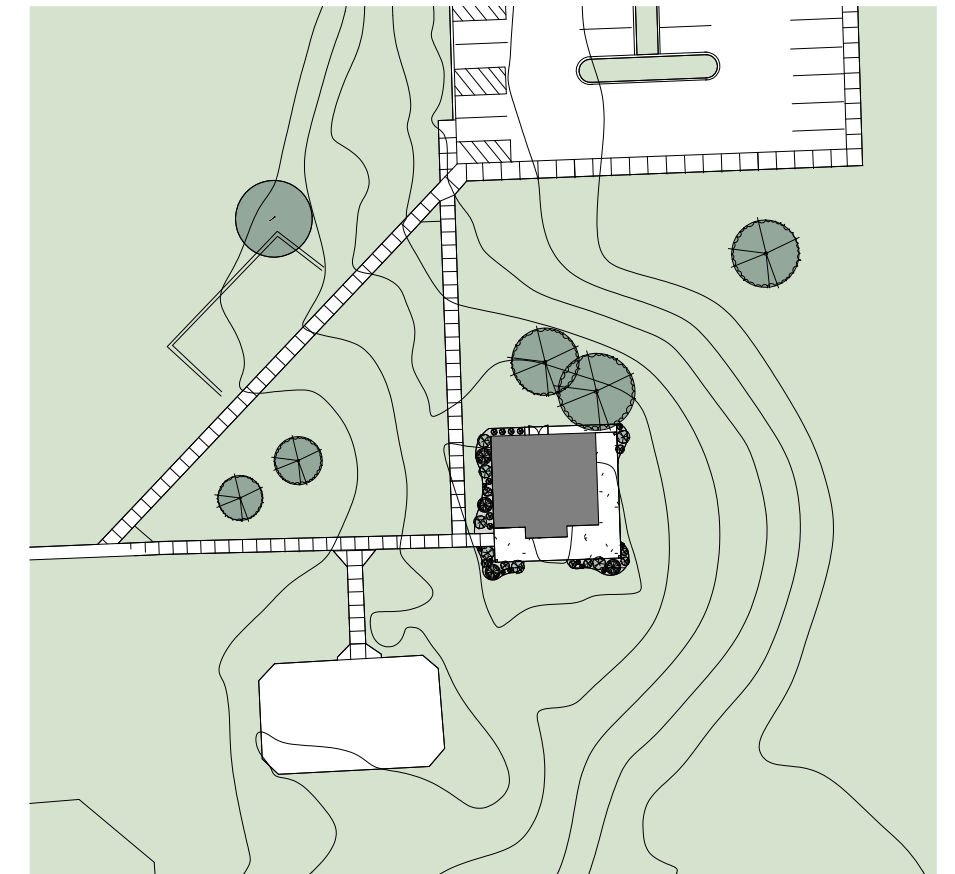
Bear Creek Regional Park
 Colorado Springs, CO 80906





1 FLOOR PLAN
1/8" = 1'-0"

BUILDING	848 SF
COVERED	640 SF
TOTAL	1488 SF



2 SITE PLAN
1" = 60'-0"



3 VIEW LOOKING NORTHEAST
NO SCALE

10/15/2020

TDG Architecture

201 E. Las Animas Street, Ste. 113
COS 80903 (719)623-5641

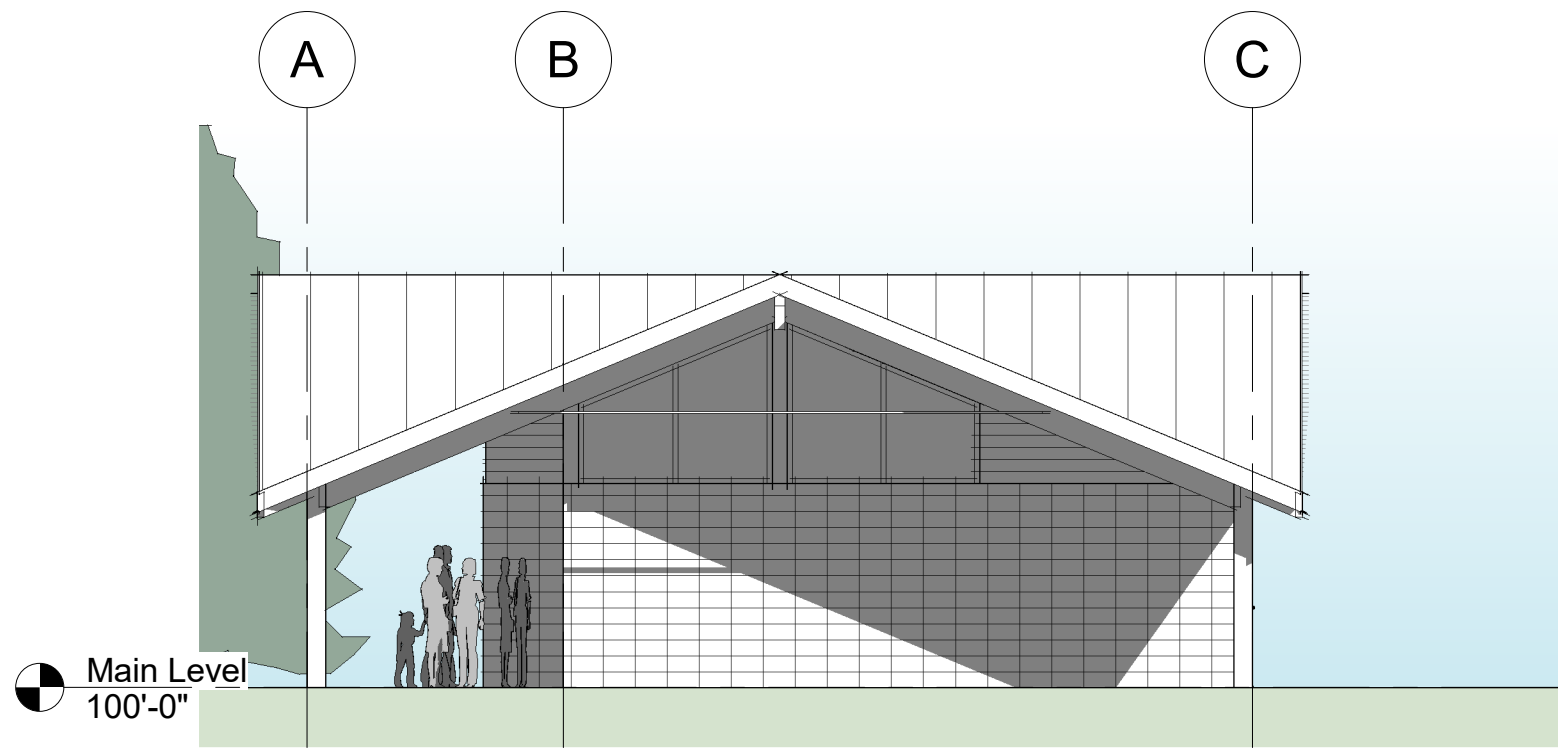
Floor Plan

Bear Creek Restrooms

Bear Creek Regional Park
Colorado Springs, CO 80906

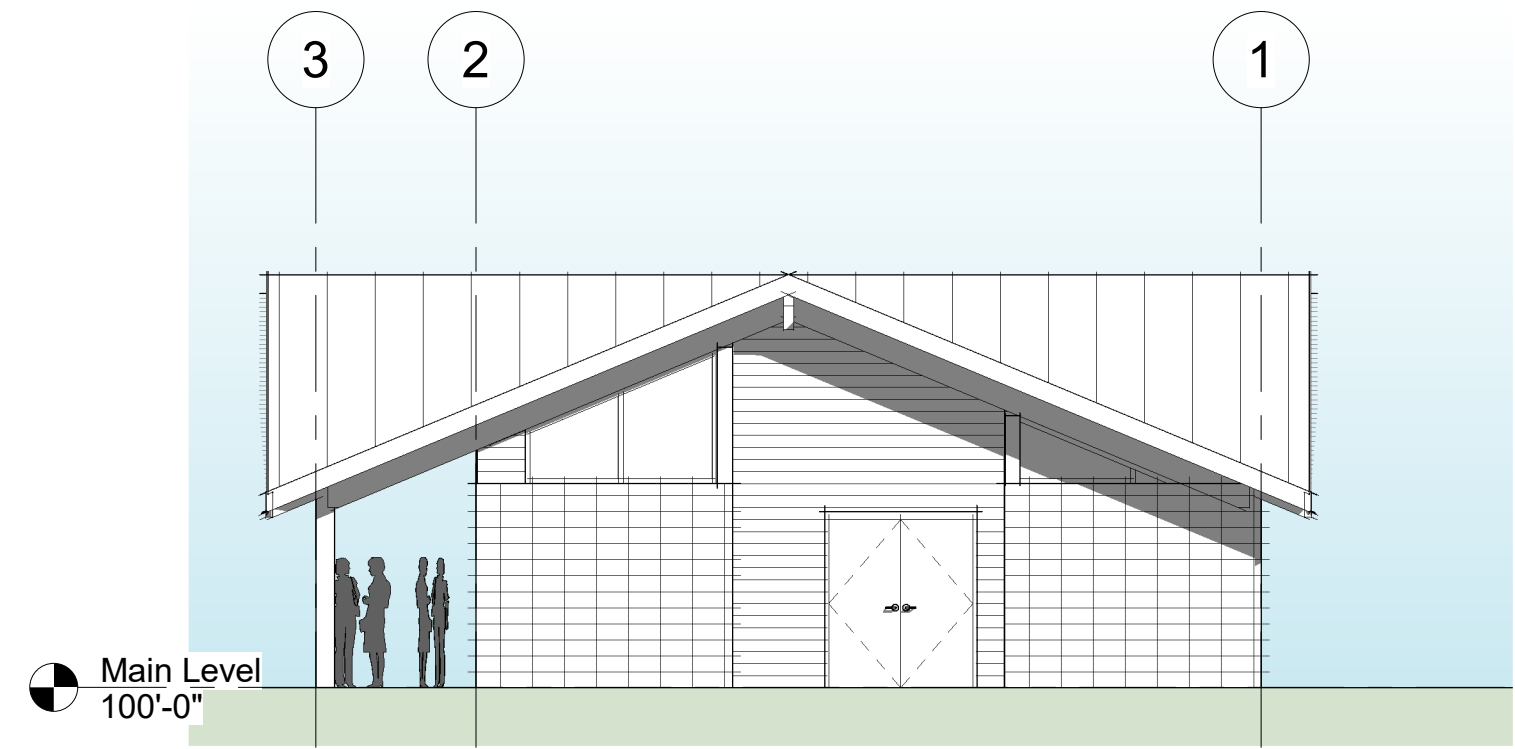


EL PASO COUNTY



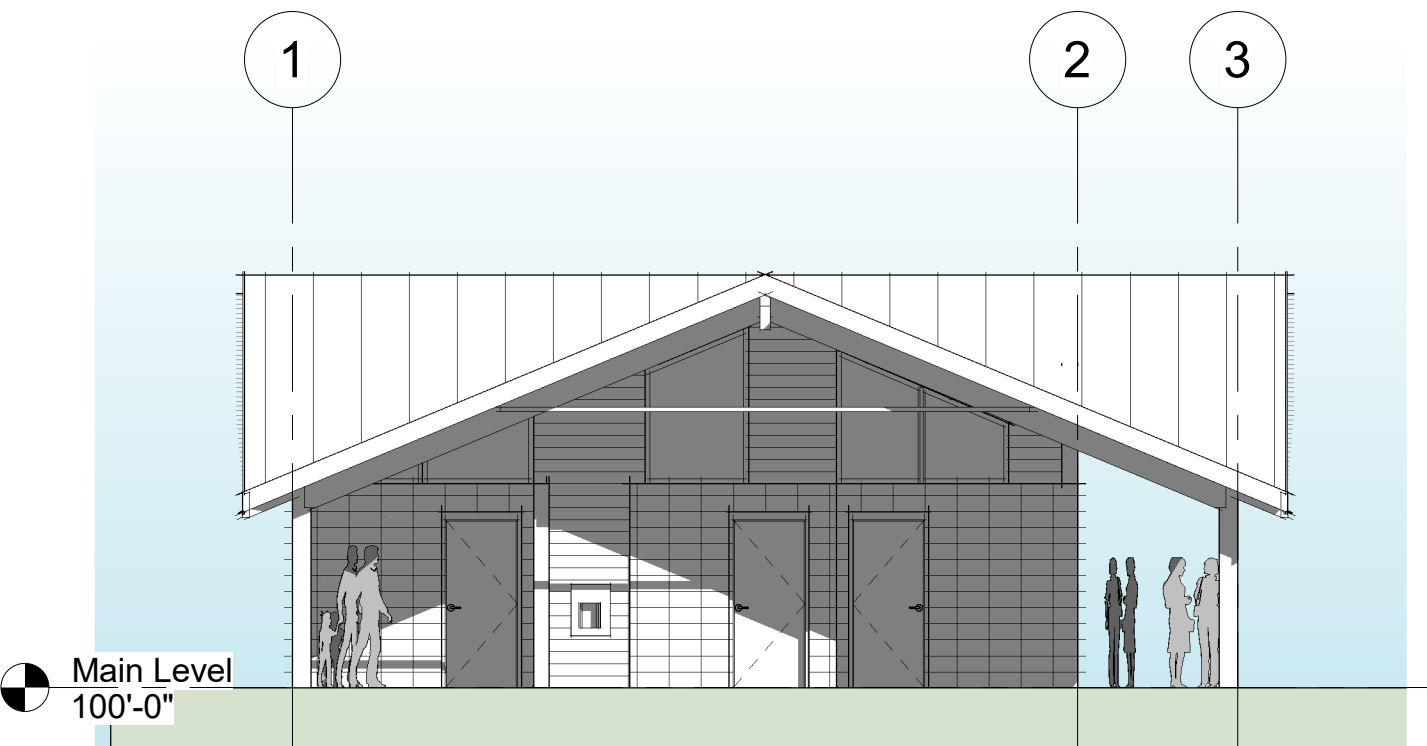
Main Level
100'-0"

1 PRESENTATION - EAST ELEVATION
1/8" = 1'-0"



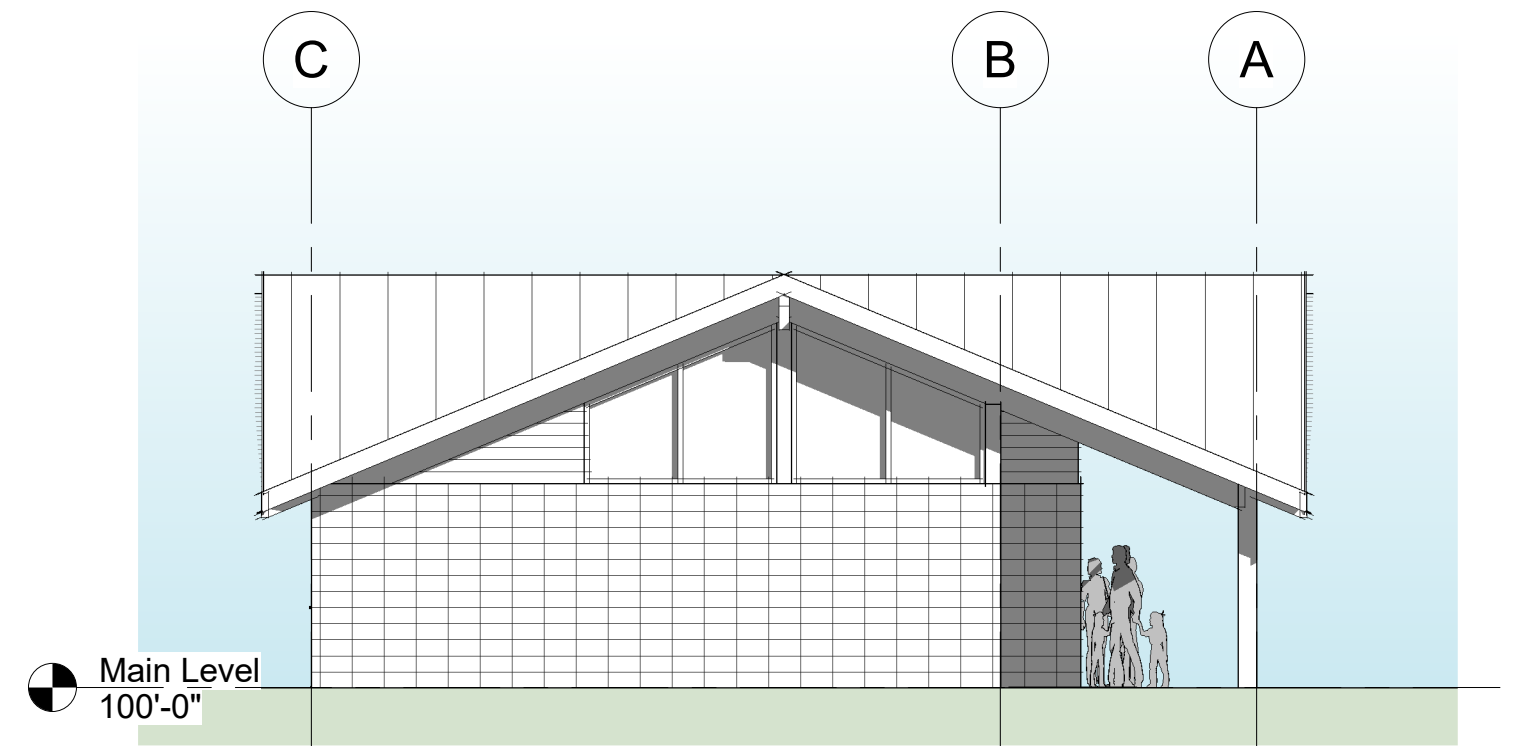
Main Level
100'-0"

2 PRESENTATION - NORTH ELEVATION
1/8" = 1'-0"



Main Level
100'-0"

3 PRESENTATION - SOUTH ELEVATION
1/8" = 1'-0"



Main Level
100'-0"

4 PRESENTATION - WEST ELEVATION
1/8" = 1'-0"

10/15/2020

TDG Architecture

201 E. Las Animas Street, Ste. 113
COS 80903 (719)623-5641

Elevations

Bear Creek Restrooms

Bear Creek Regional Park
Colorado Springs, CO 80906





10/15/2020

TDG Architecture

201 E. Las Animas Street, Ste. 113
COS 80903 (719)623-5641

Southeast Rendering

Bear Creek Restrooms

Bear Creek Regional Park
Colorado Springs, CO 80906





10/15/2020

TDG Architecture

201 E. Las Animas Street, Ste. 113
COS 80903 (719)623-5641

Approach from Pavilions

Bear Creek Restrooms

Bear Creek Regional Park
Colorado Springs, CO 80906





10/15/2020

TDG Architecture

201 E. Las Animas Street, Ste. 113
COS 80903 (719)623-5641

Approach from Parking

Bear Creek Restrooms

Bear Creek Regional Park
Colorado Springs, CO 80906

