

West Natural Gas Region

Federal Energy Regulatory Commission Market Assessments



**West Day-Ahead Natural Gas Prices
Averaged Annually/Seasonally**

Federal Energy Regulatory Commission **Market Assessments**

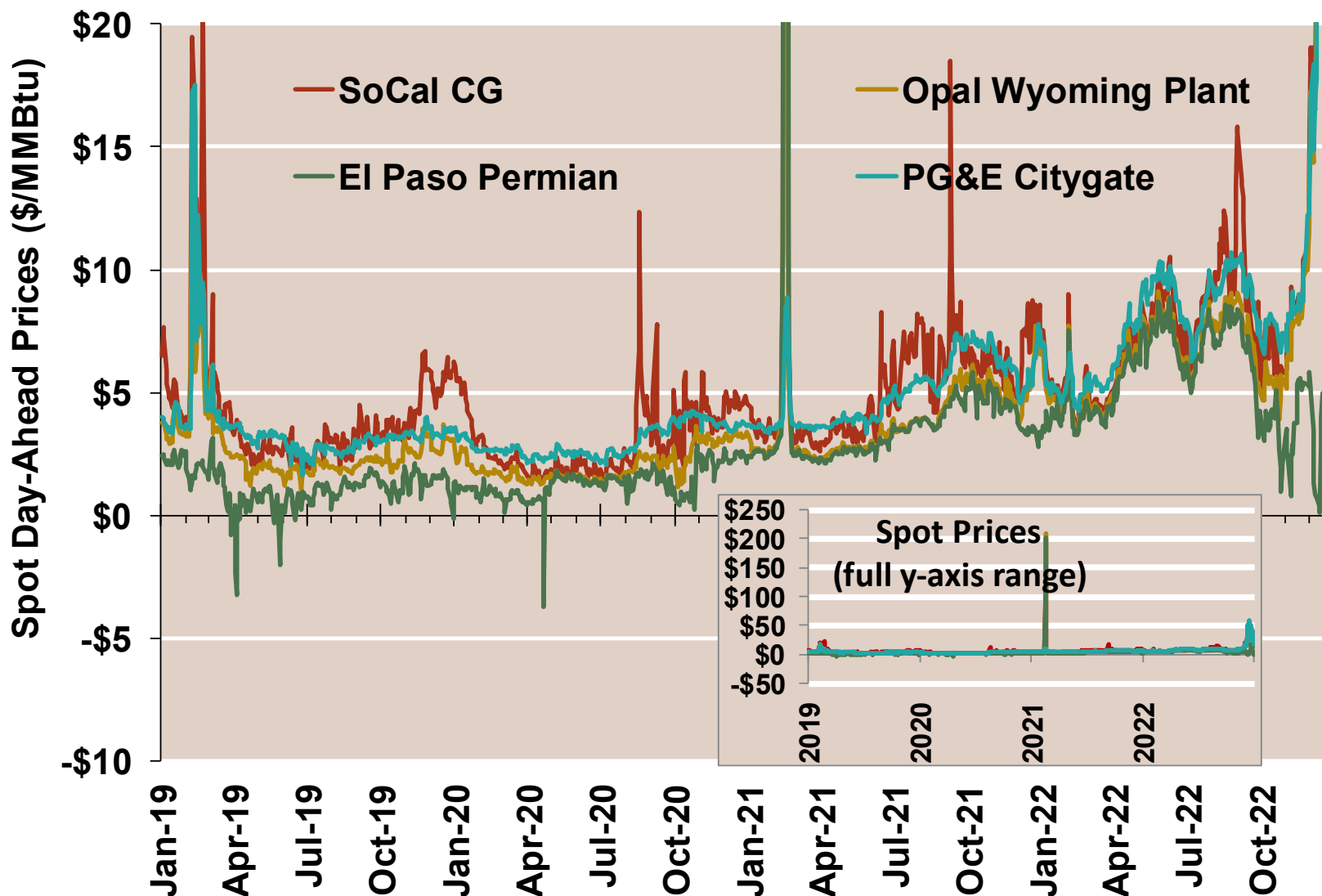
	Average Day Ahead Prices (\$/MMBtu)	SoCal CG	Opal Wyoming Plant	El Paso Permian	PG&E CG	Henry Hub
2020	Annual	3.05	2.05	1.34	3.01	2.00
	Summer	2.69	1.83	1.27	2.93	1.89
	Winter 2020/2021	6.39	6.12	6.67	3.83	3.15
2021	Annual	6.25	5.12	5.13	5.01	3.87
	Summer	5.55	3.84	3.58	5.19	3.86
	Winter 2021/2022	5.62	4.87	4.09	5.56	4.51
2022	Annual	9.33	8.29	5.41	9.64	6.42
	Summer	8.24	6.98	6.34	8.53	7.44
	Winter 2022/2023	19.54	18.27	4.04	19.99	5.52

Source: Data derived from S&P Global Platts data

Note: Averages are based on trading days when prices are published.

West Daily Day-Ahead Prices

Federal Energy Regulatory Commission Market Assessments

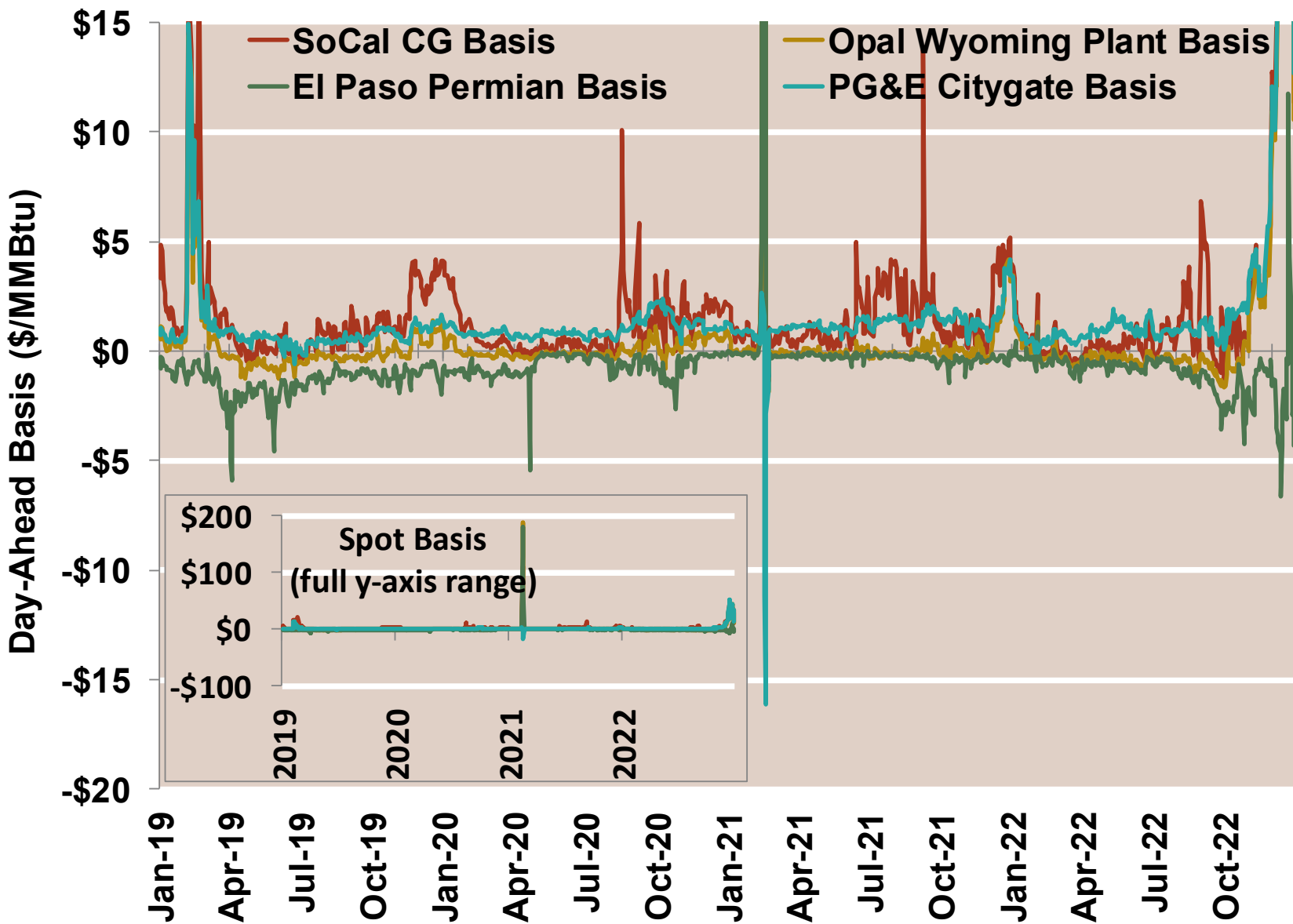


Source: Data derived from S&P Global Platts data

Note: The inset graphic shows spot prices for the full y-axis range *not* the 30-day moving average.

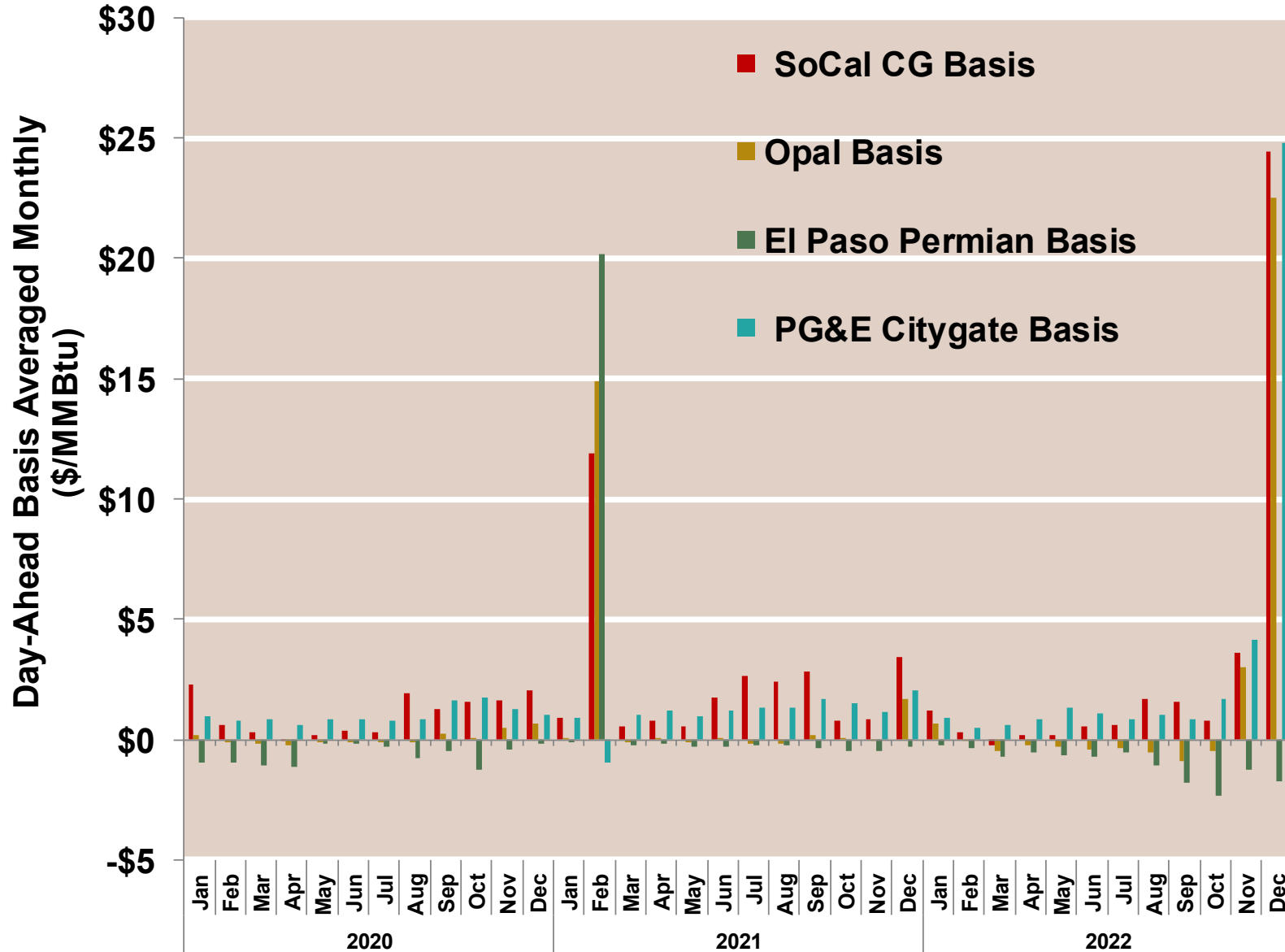
West Daily Day-Ahead Basis

Federal Energy Regulatory Commission Market Assessments



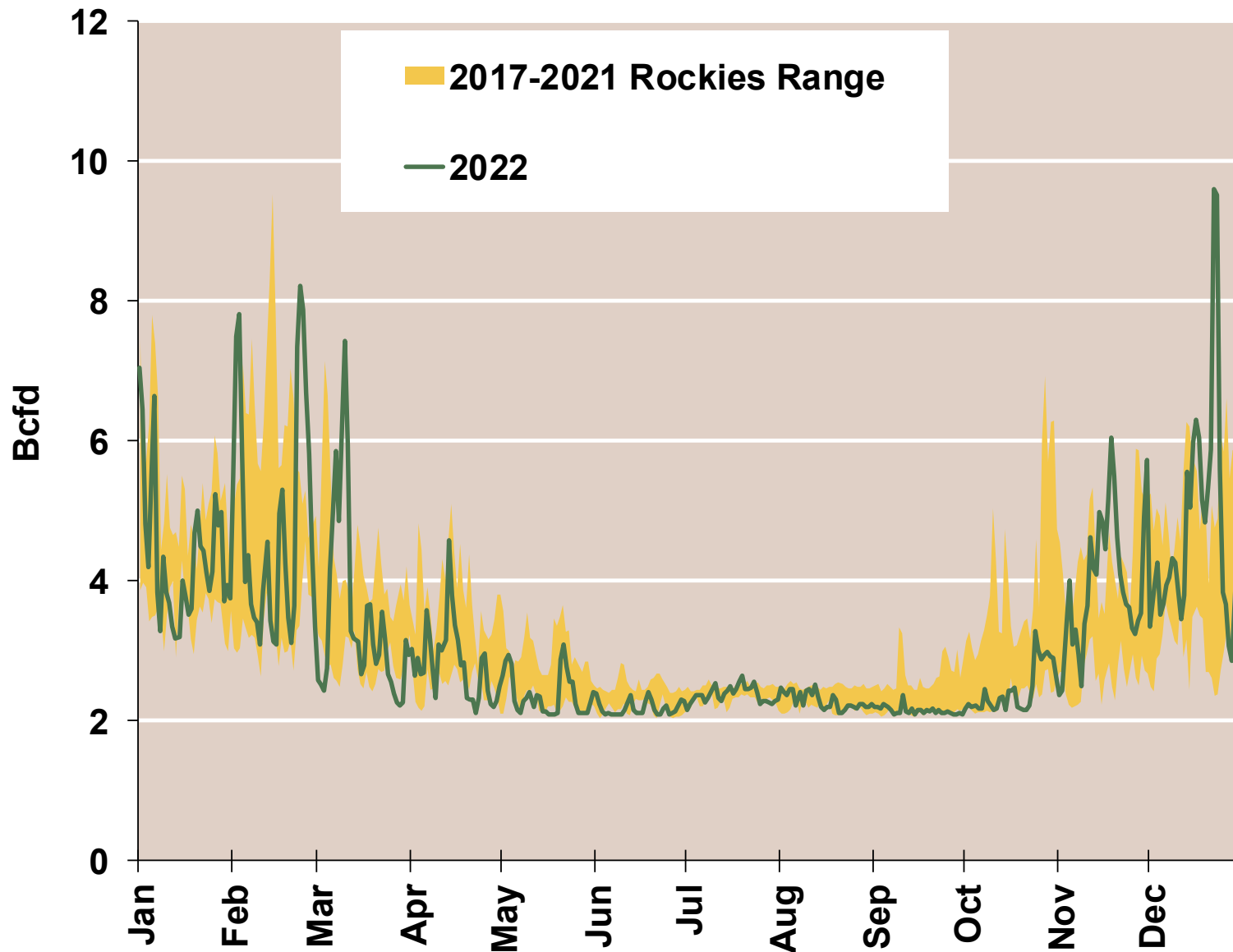
West Day-Ahead Basis Averaged Monthly

Federal Energy Regulatory Commission Market Assessments



Daily Rockies Natural Gas Demand All Sectors

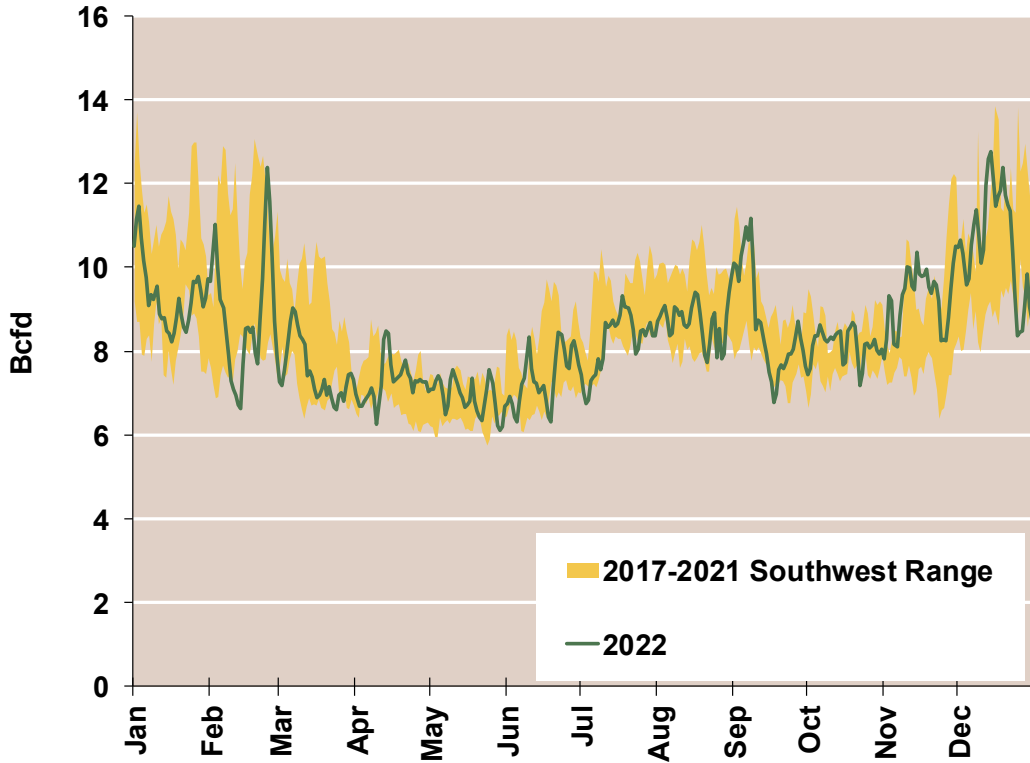
Federal Energy Regulatory Commission Market Assessments



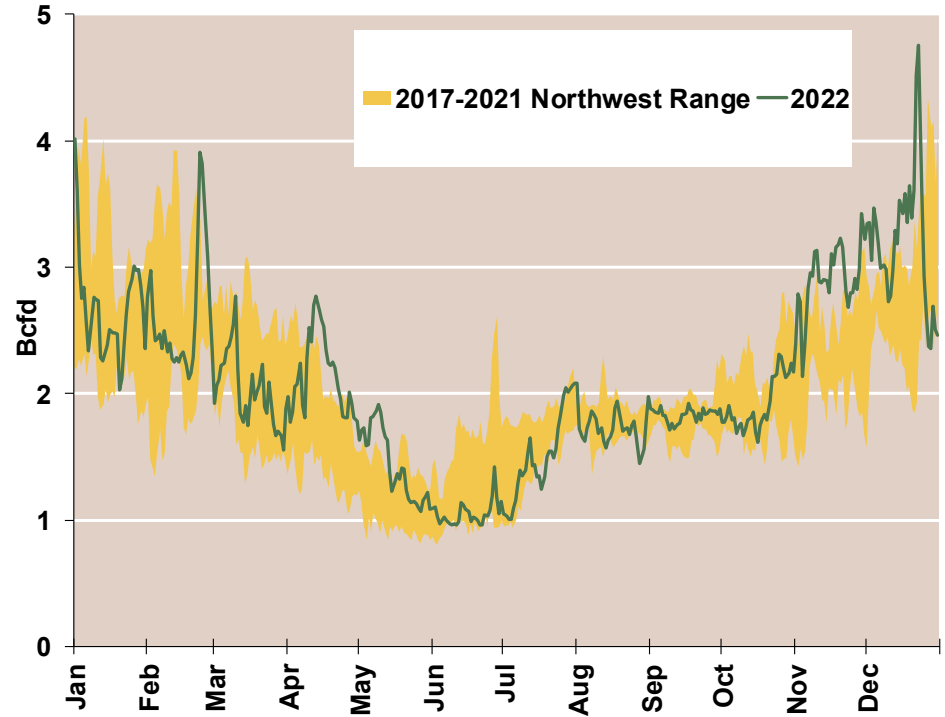
Daily Southwest and Northwest Natural Gas Demand All Sectors

Federal Energy Regulatory Commission Market Assessments

Southwest



Northwest



Source: Derived from S&P Global Bentek Energy data

Note: Data derived from interstate natural gas pipeline flows.

West Natural Gas Consumption for Power Generation

Federal Energy Regulatory Commission Market Assessments

