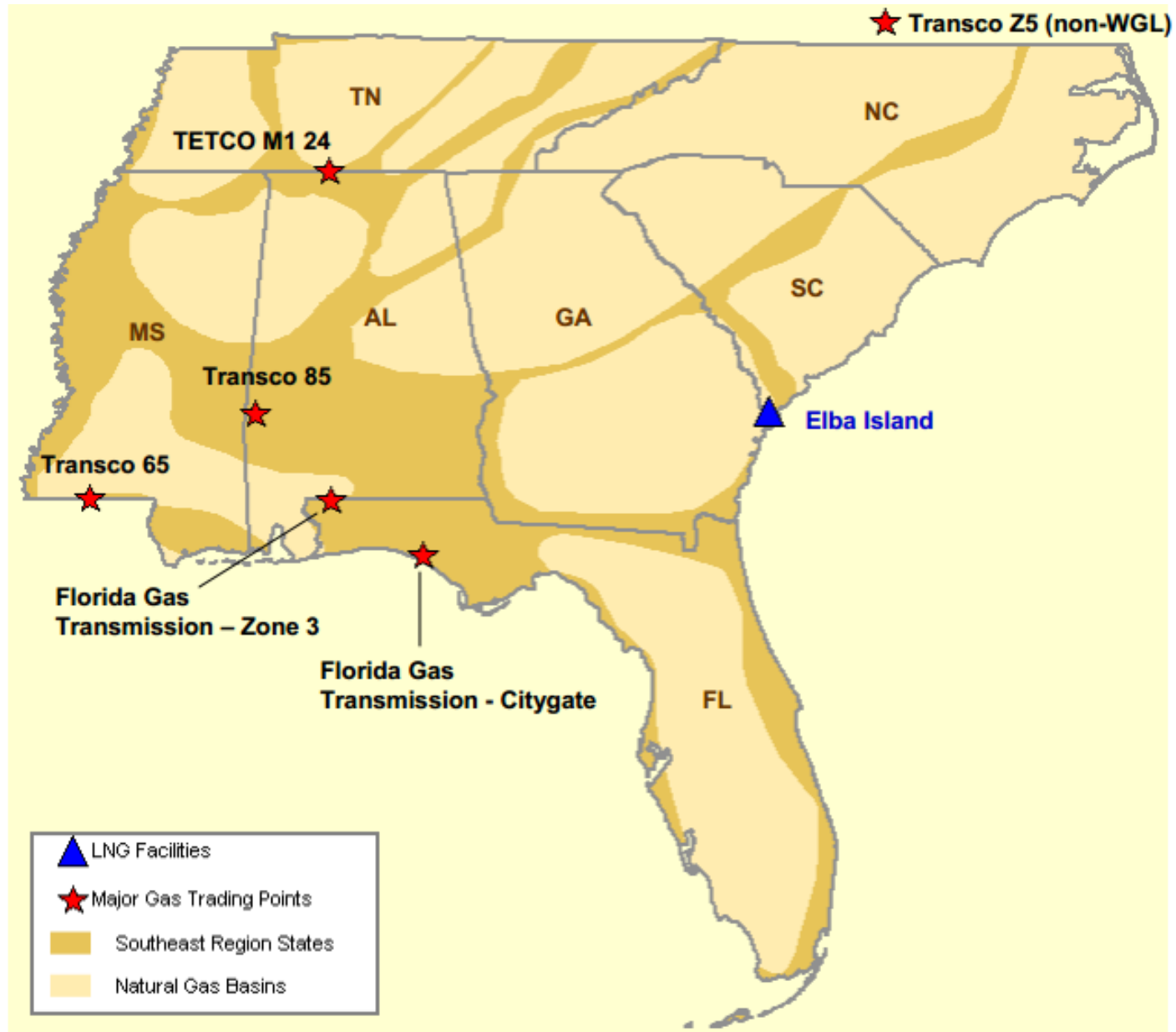


# Southeast Natural Gas Region

Federal Energy Regulatory Commission Market Assessments



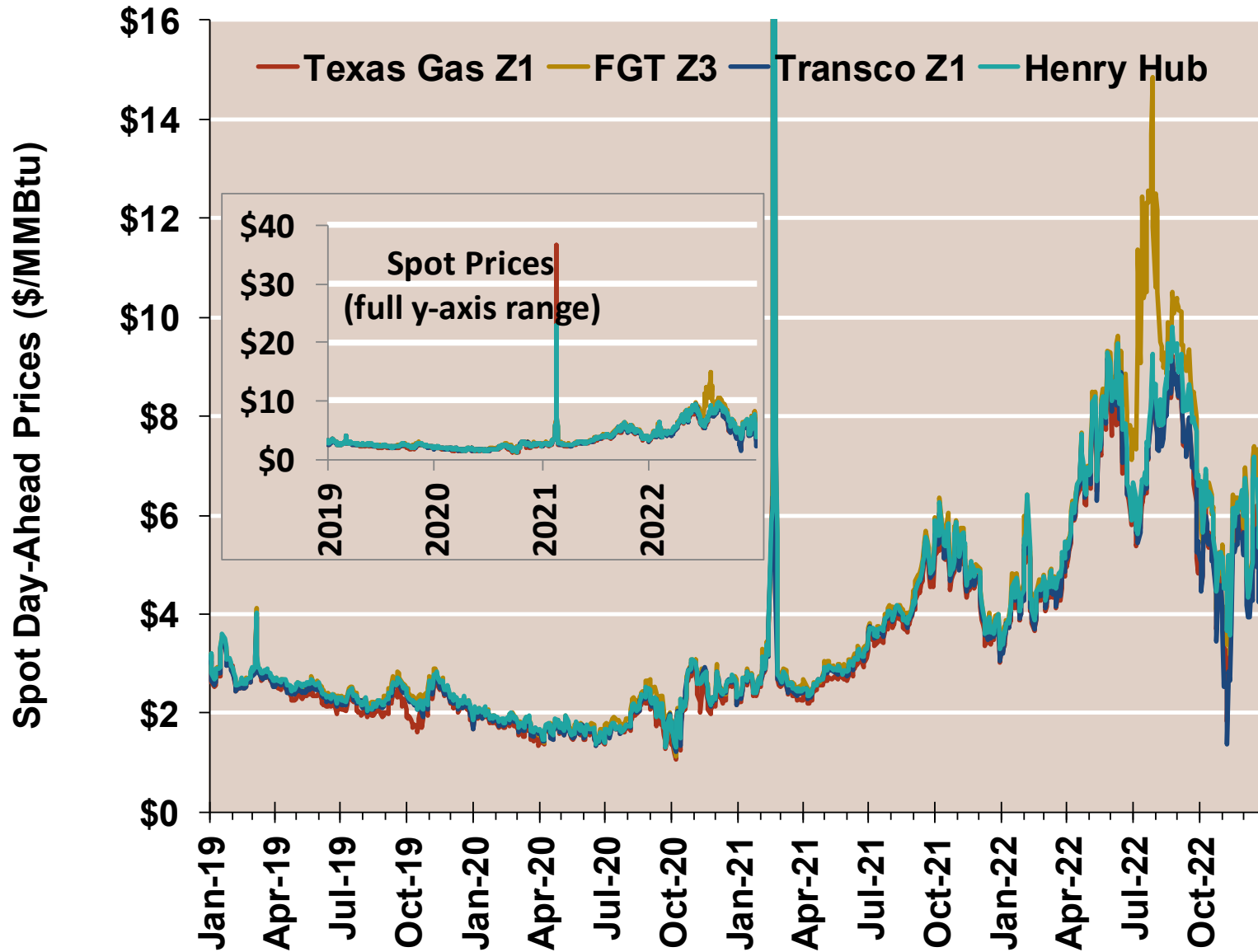
**Southeast Day-Ahead Prices  
Averaged Annually/Seasonally**

Federal Energy Regulatory Commission **Market Assessments**

	Average Day Ahead Prices (\$/MMBtu)	FGT Z3	Texas Gas Z1	TZ1	Henry Hub
<b>2020</b>	<b>Annual</b>	2.03	1.86	1.96	<b>2.00</b>
	<b>Summer</b>	1.95	1.77	1.85	<b>1.89</b>
	<b>Winter 2020/2021</b>	3.15	3.15	2.64	<b>3.15</b>
<b>2021</b>	<b>Annual</b>	3.92	3.75	3.63	<b>3.87</b>
	<b>Summer</b>	3.94	3.67	3.80	<b>3.86</b>
	<b>Winter 2021/2022</b>	4.56	4.28	4.35	<b>4.51</b>
<b>2022</b>	<b>Annual</b>	6.98	5.96	5.94	<b>6.42</b>
	<b>Summer</b>	8.34	6.92	7.01	<b>7.44</b>
	<b>Winter 2022/2023</b>	5.65	4.97	4.45	<b>5.52</b>

# Southeast Day-Ahead Prices

Federal Energy Regulatory Commission Market Assessments

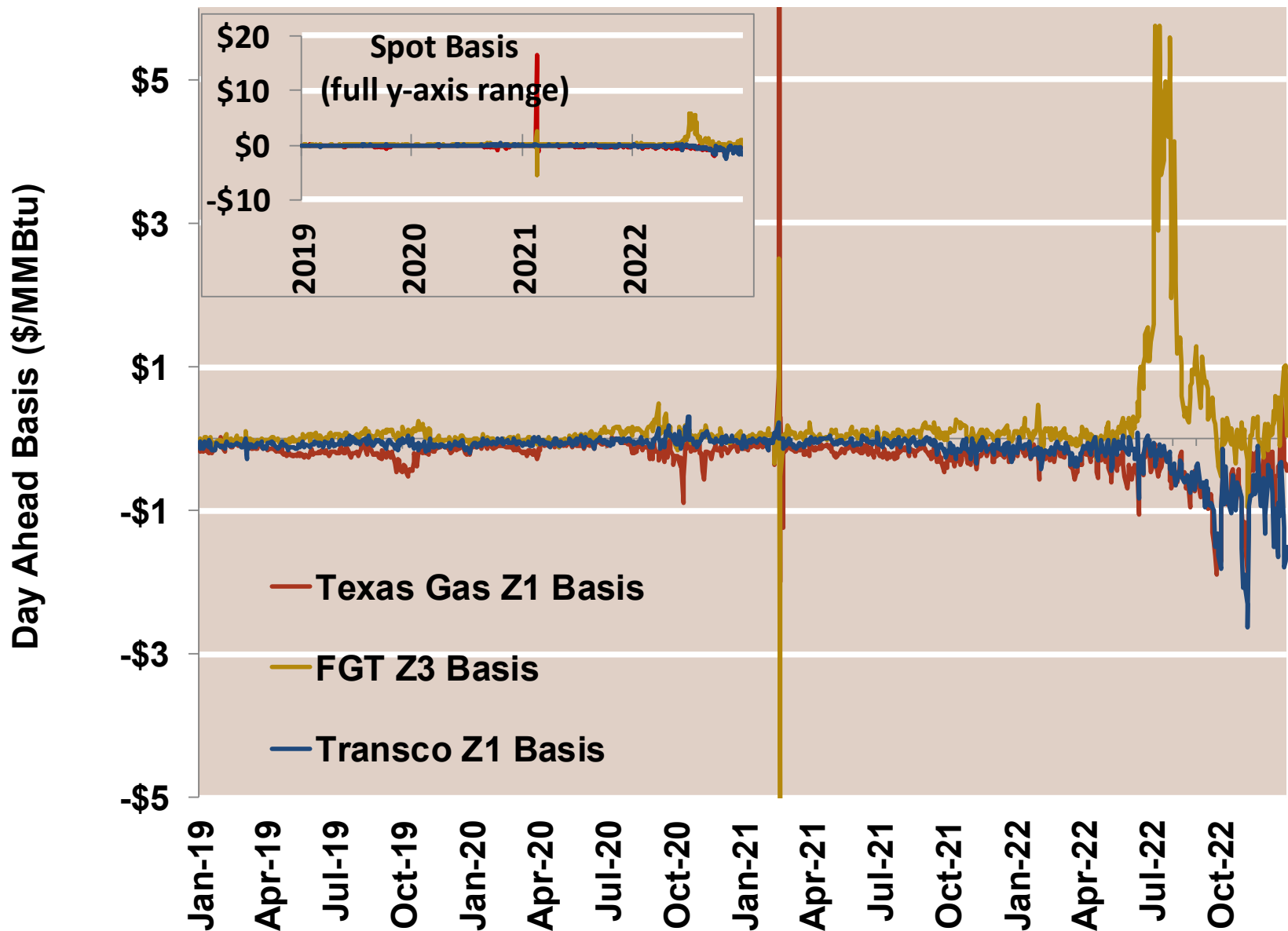


Source: Derived from S&P Global Platts data

Note: The inset graphic now shows spot prices for the full y-axis range *not* the 30-day moving average.

# Southeast Day-Ahead Basis

Federal Energy Regulatory Commission Market Assessments

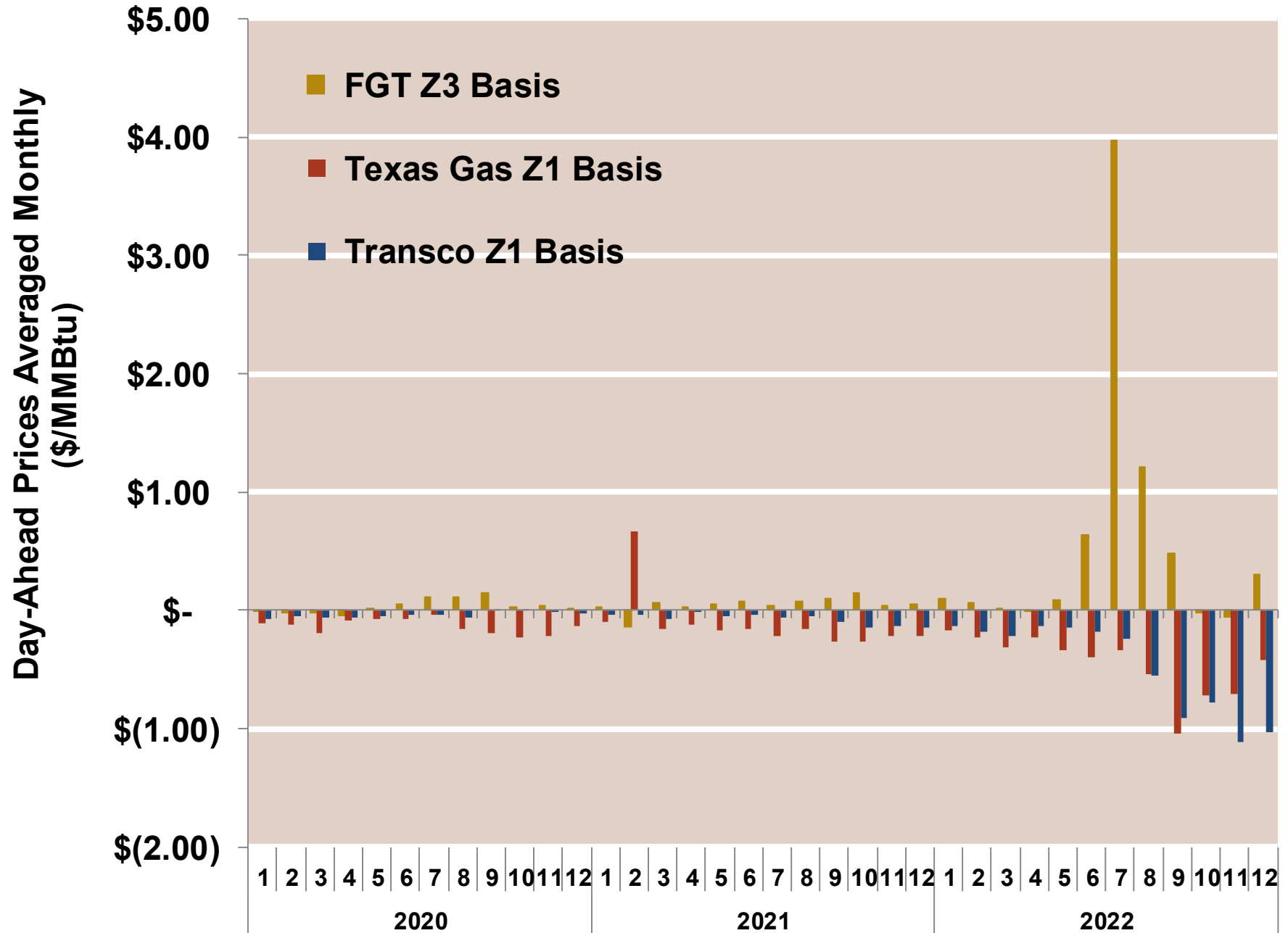


Source: Derived from S&P Global Platts data

Note: The inset graphic now shows spot basis for the full y-axis range *not* the 30-day moving average.

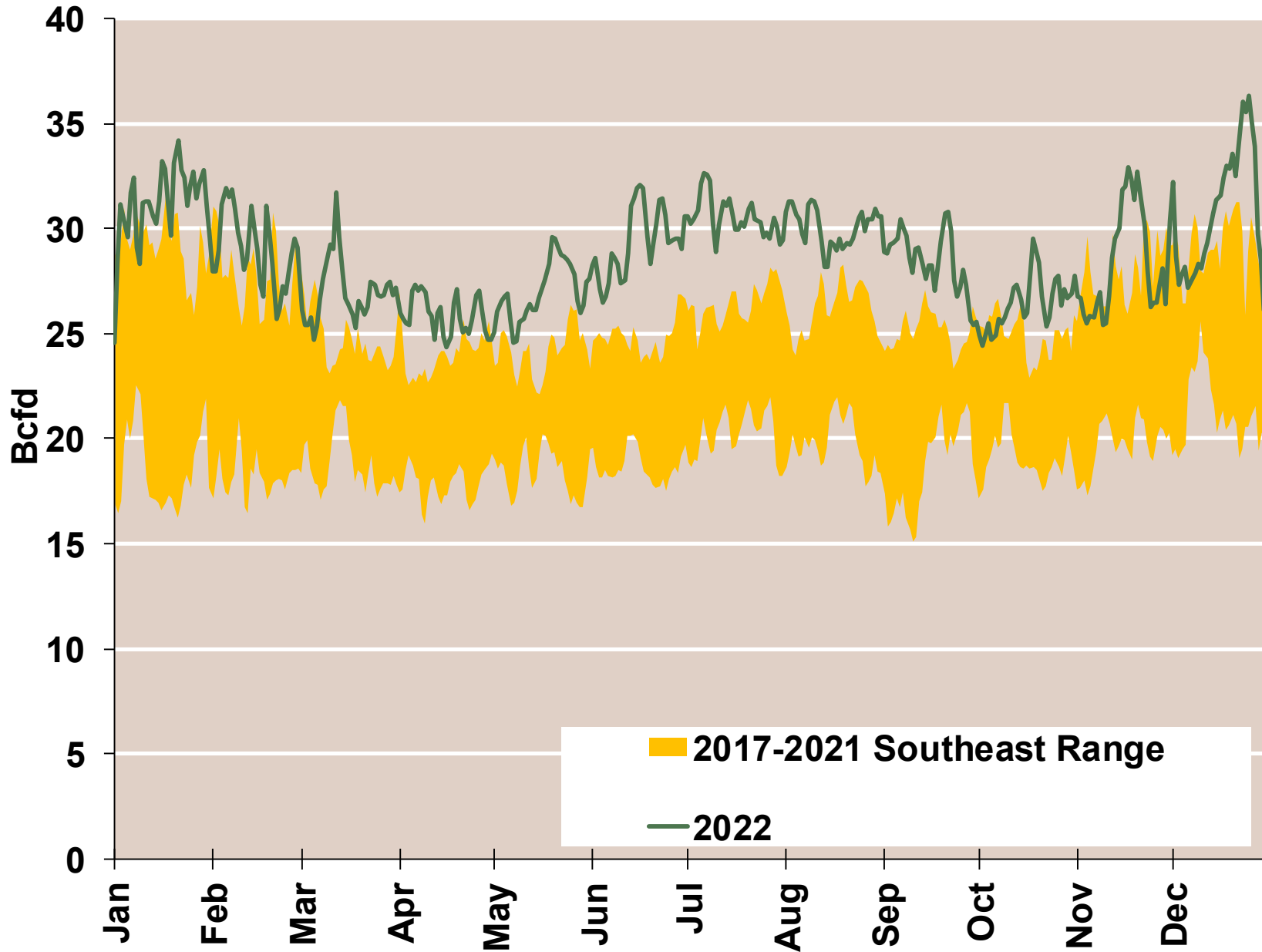
# Southeast Basis to Henry Hub Averaged Monthly

Federal Energy Regulatory Commission Market Assessments



# Daily Southeast Natural Gas Demand All Sectors

Federal Energy Regulatory Commission Market Assessments



# Southeast Natural Gas Consumption for Power Generation

Federal Energy Regulatory Commission Market Assessments

