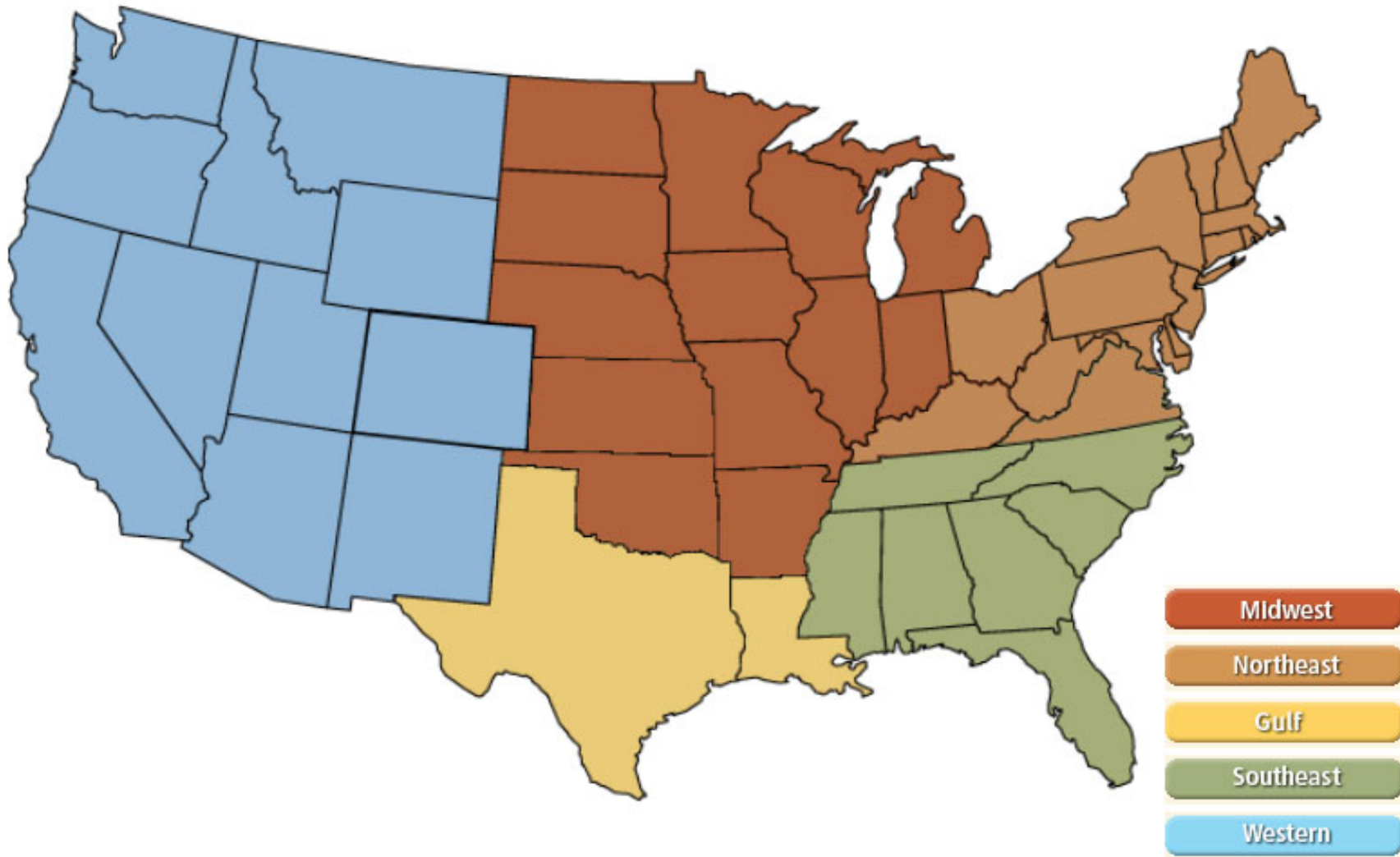


National

Federal Energy Regulatory Commission **Market Assessments**



NOAA 3 Month Outlook

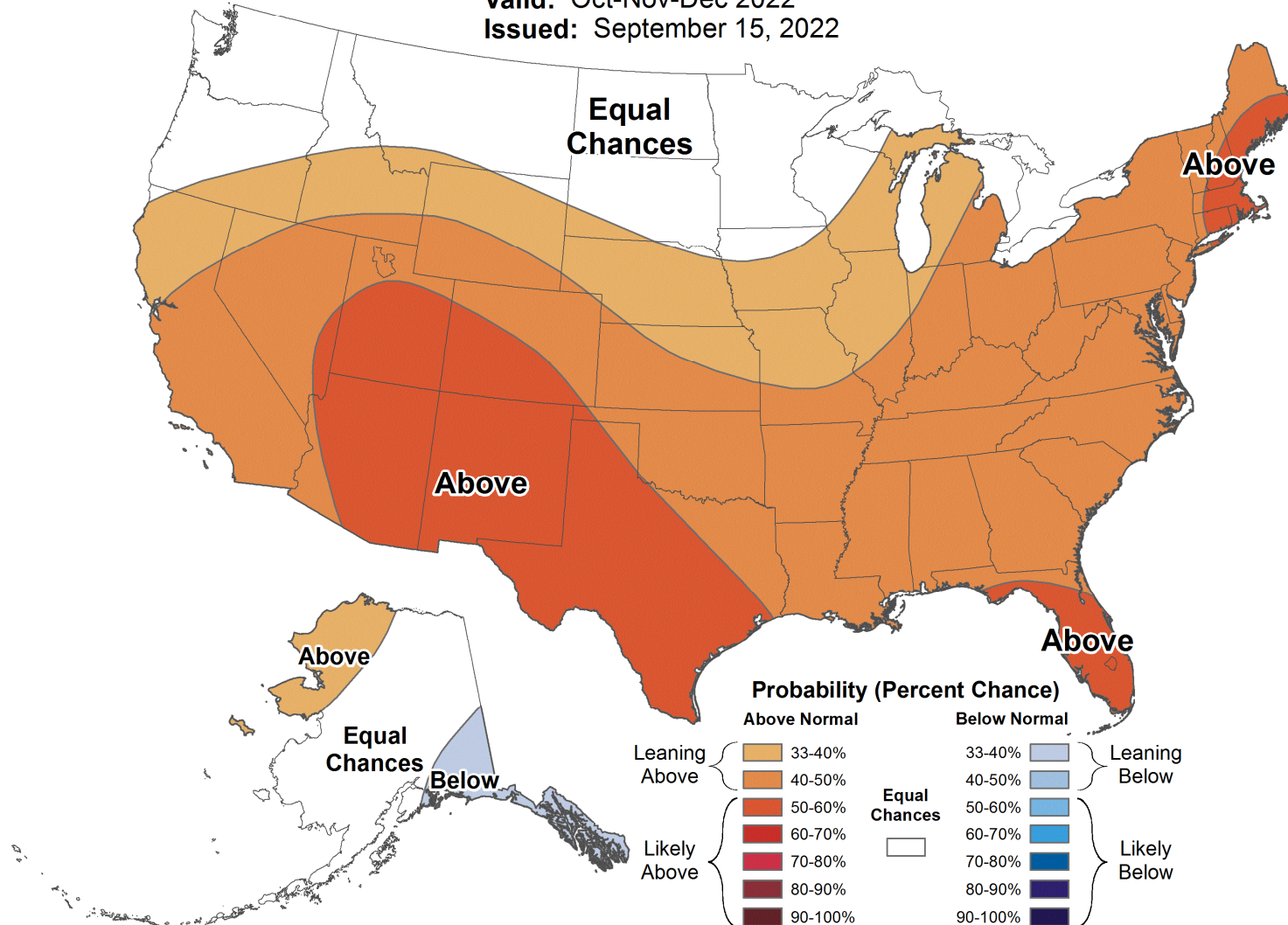
Federal Energy Regulatory Commission **Market Assessments**



Seasonal Temperature Outlook

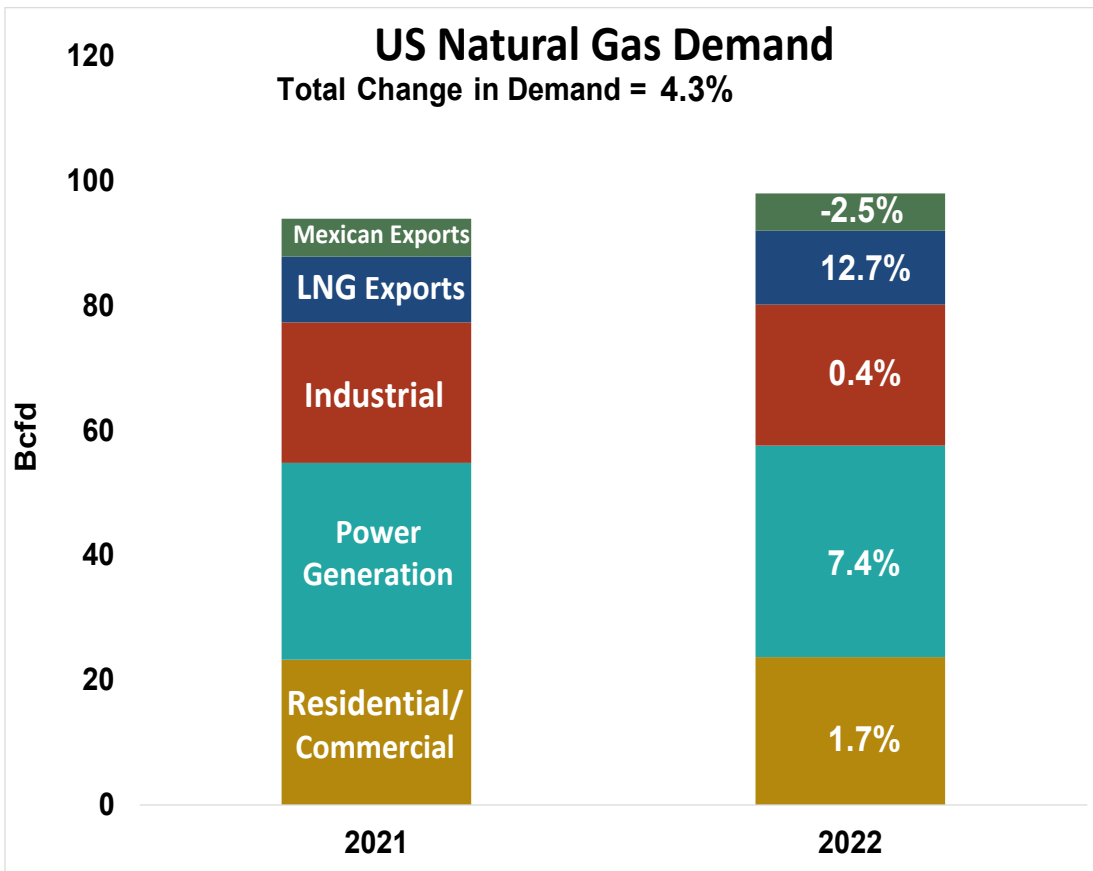
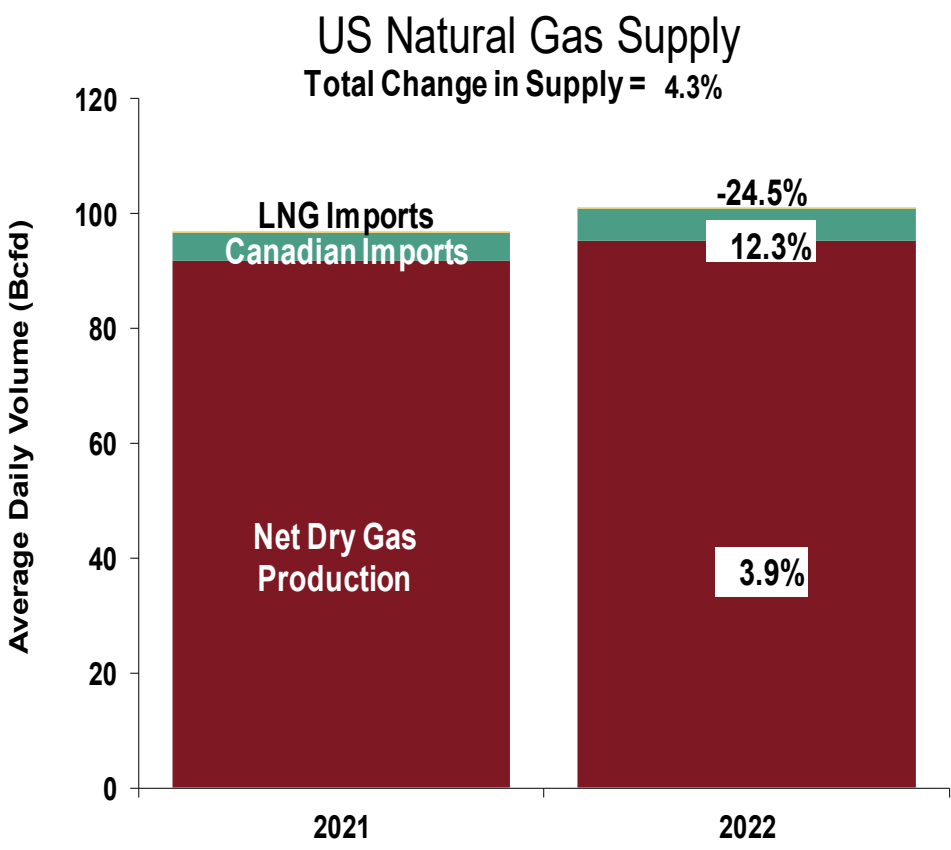


Valid: Oct-Nov-Dec 2022
Issued: September 15, 2022



U.S. NG Supply and Demand Sep-21 YTD vs. Sep-22 YTD

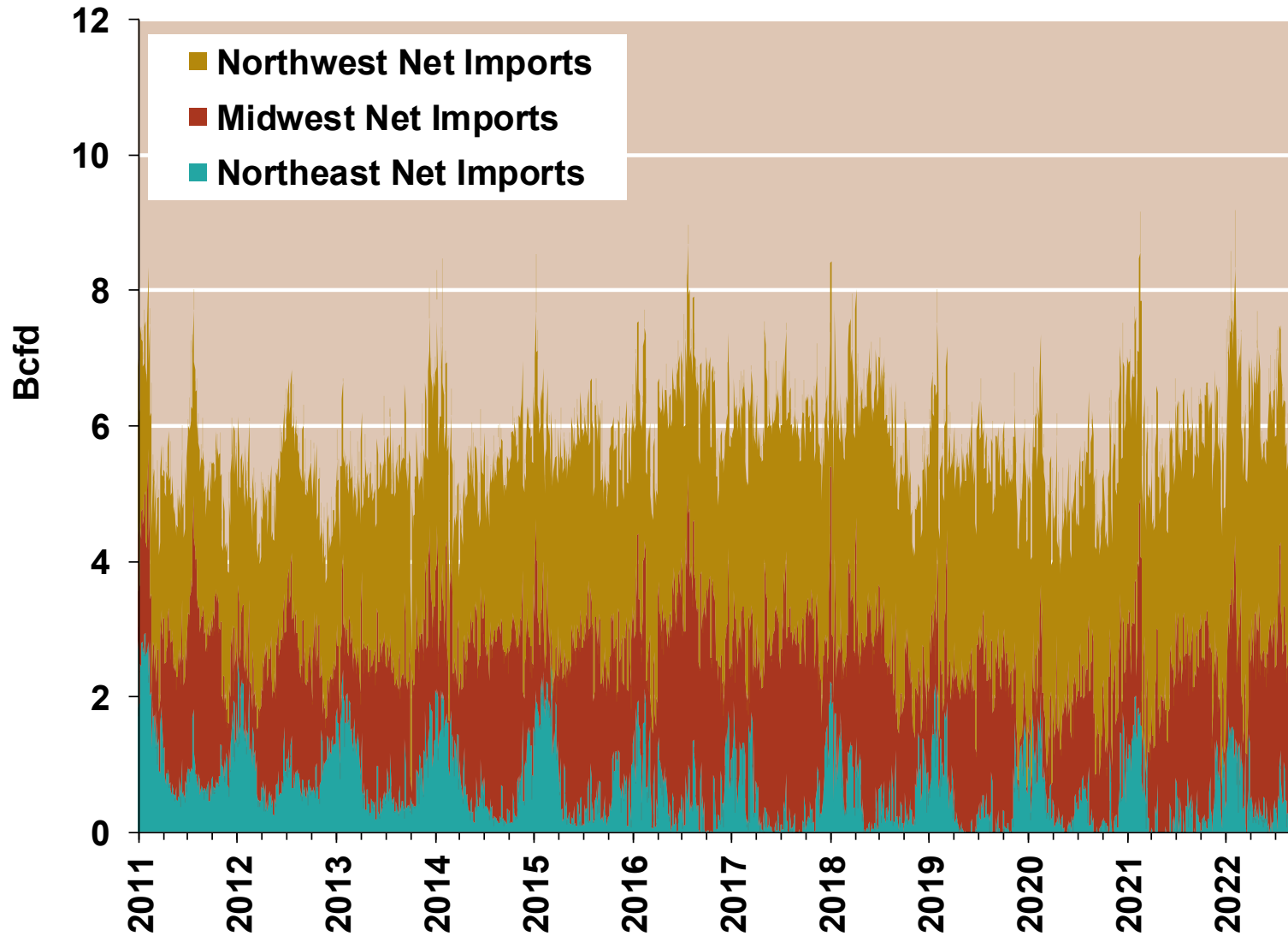
Federal Energy Regulatory Commission **Market Assessments**



Note: Balance includes all amounts not attributable to other categories.
 Source: Derived from S&P Global Bentek Energy data

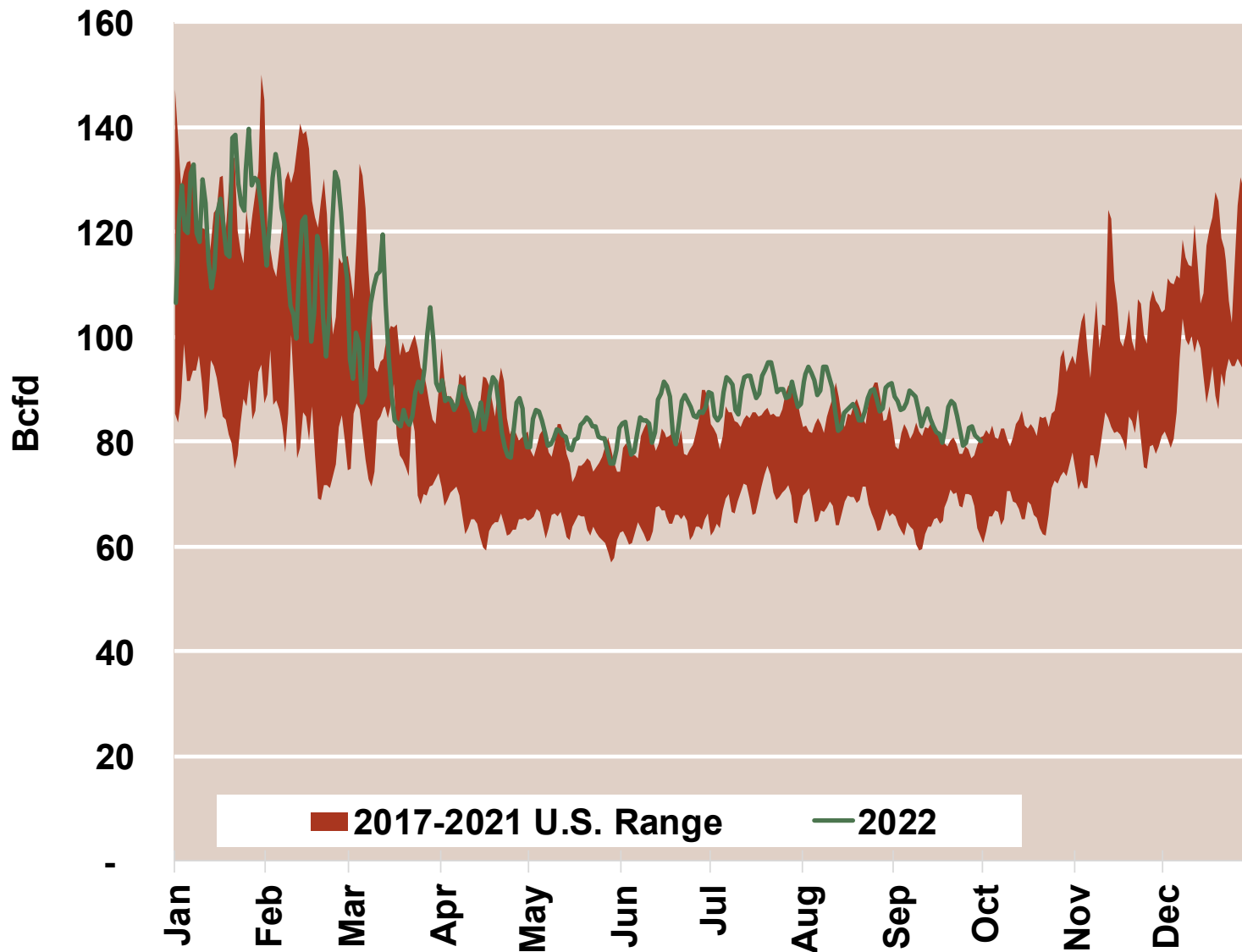
Regional Canadian Imports

Federal Energy Regulatory Commission **Market Assessments**



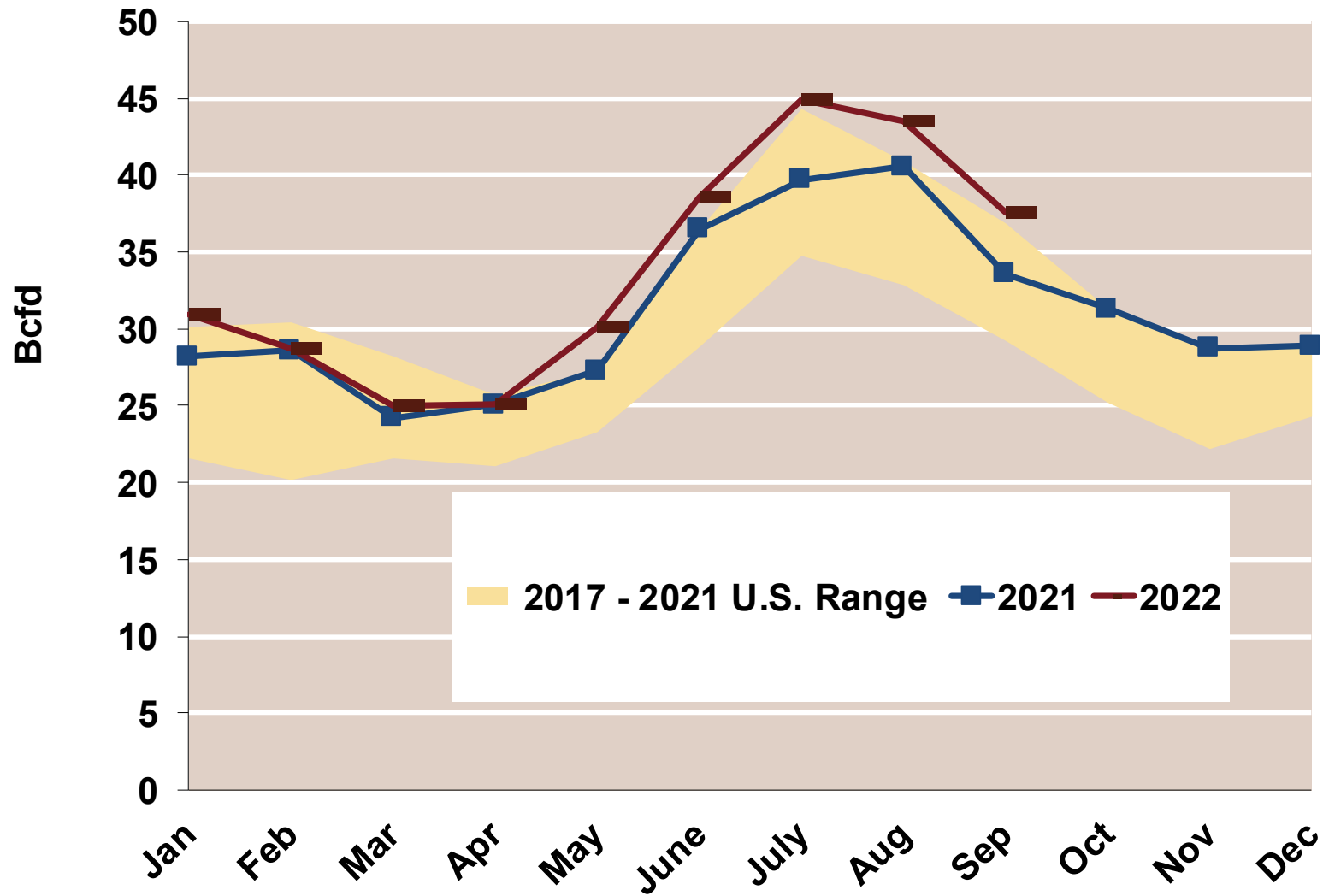
Total U.S. Natural Gas Demand All Sectors

Federal Energy Regulatory Commission **Market Assessments**



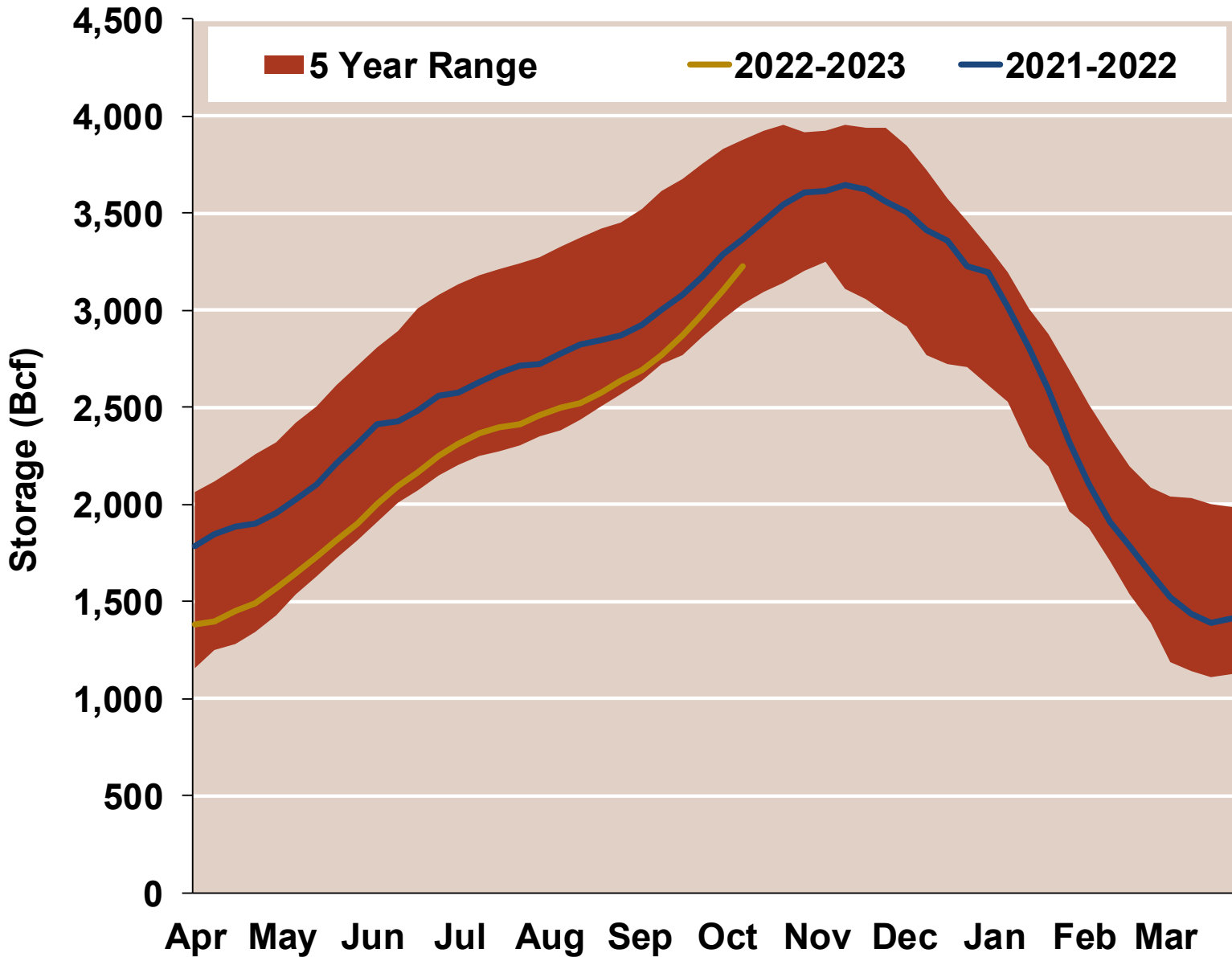
U.S. Natural Gas Consumption for Power Generation

Federal Energy Regulatory Commission **Market Assessments**



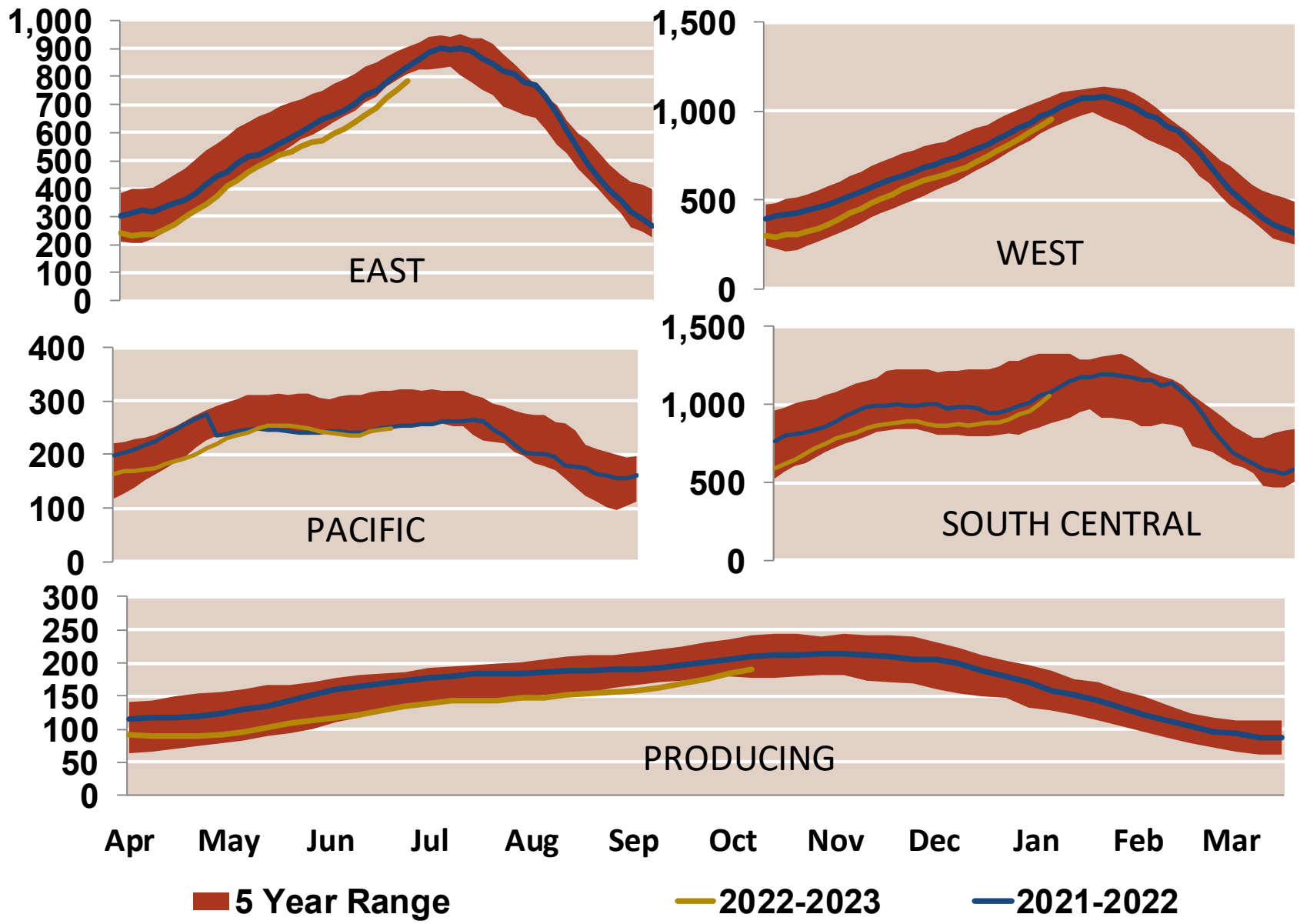
EIA Storage Inventories

Federal Energy Regulatory Commission **Market Assessments**



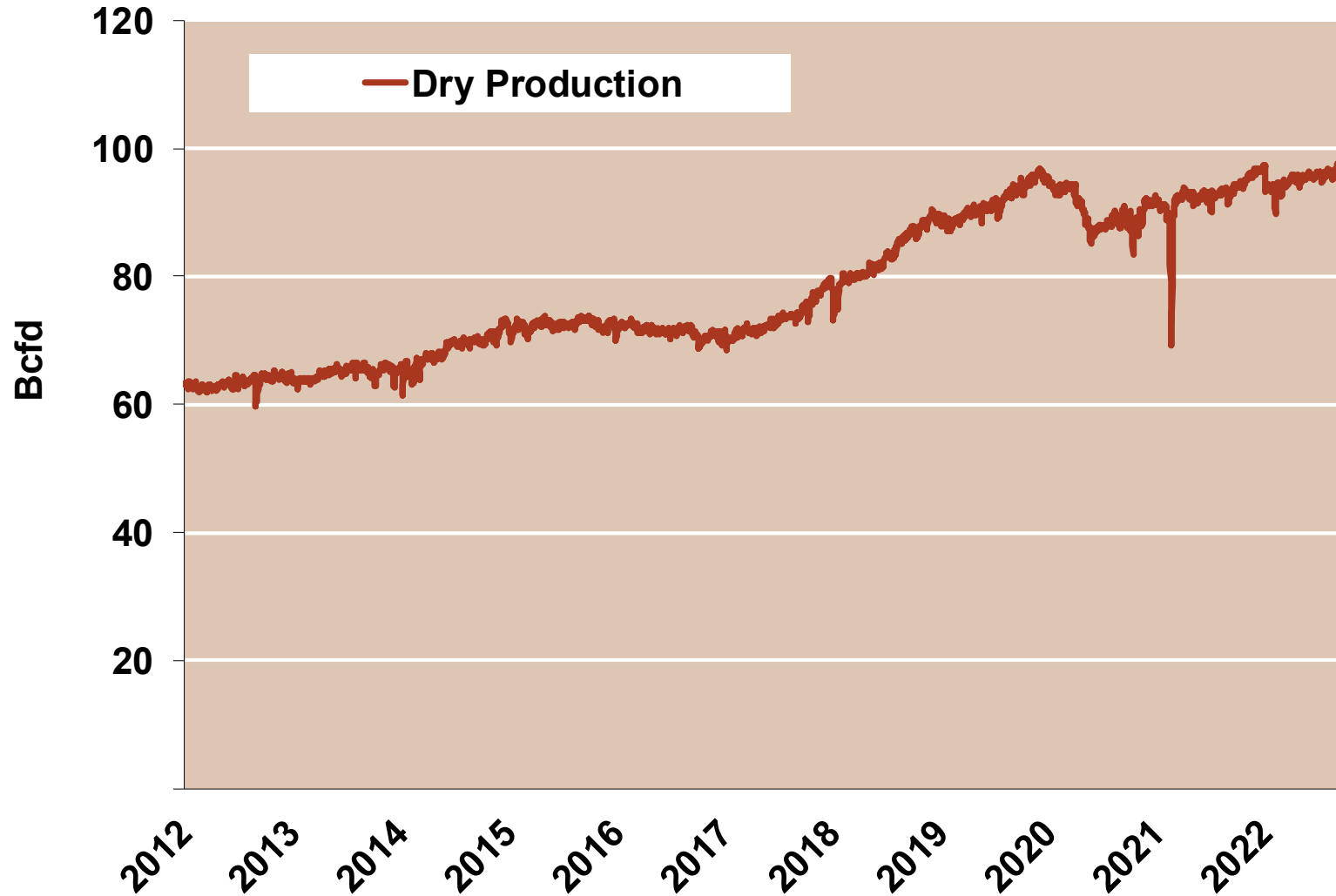
EIA Storage Inventories

Federal Energy Regulatory Commission **Market Assessments**



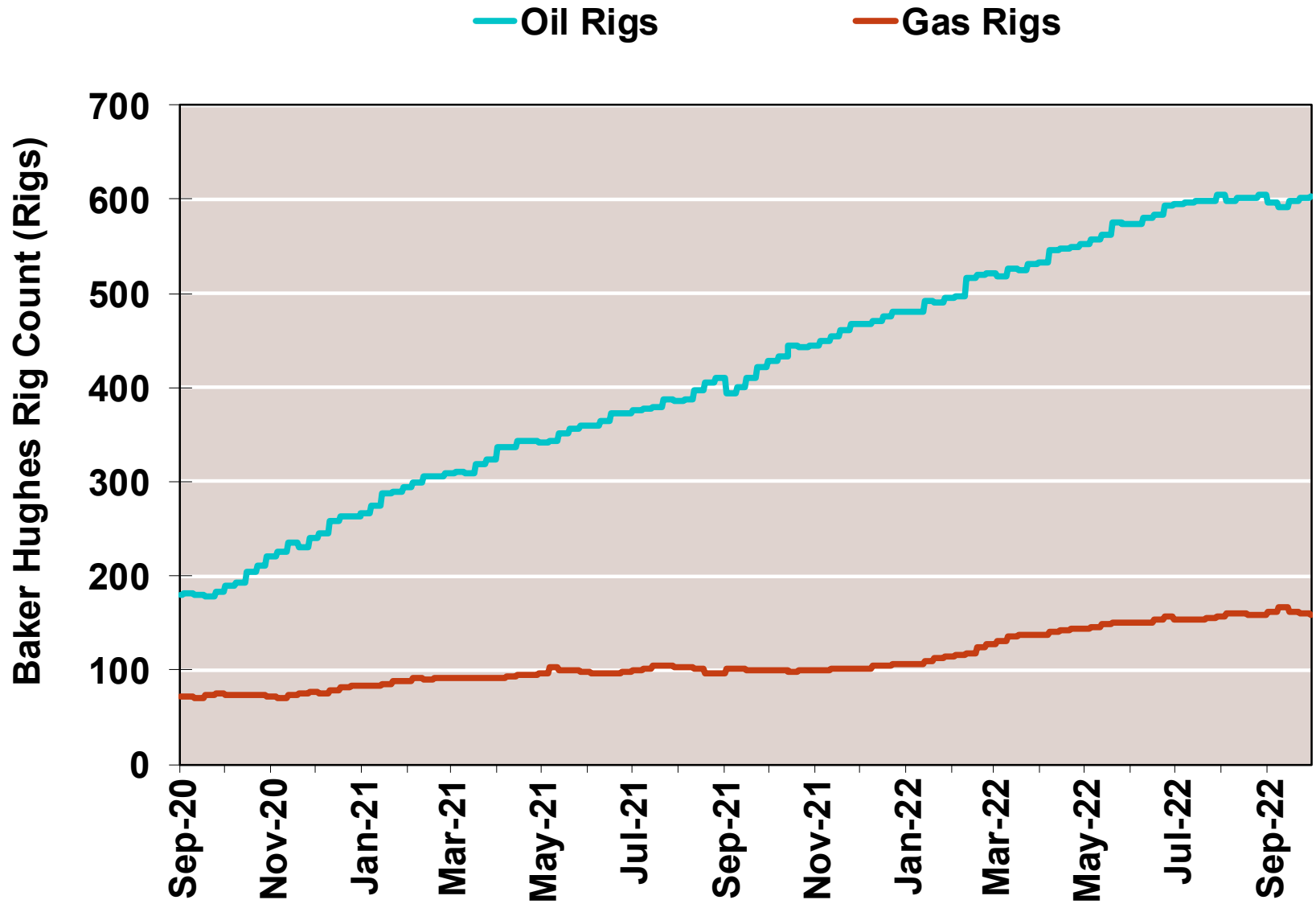
Monthly U.S. Dry Gas Production – Lower 48 States

Federal Energy Regulatory Commission **Market Assessments**



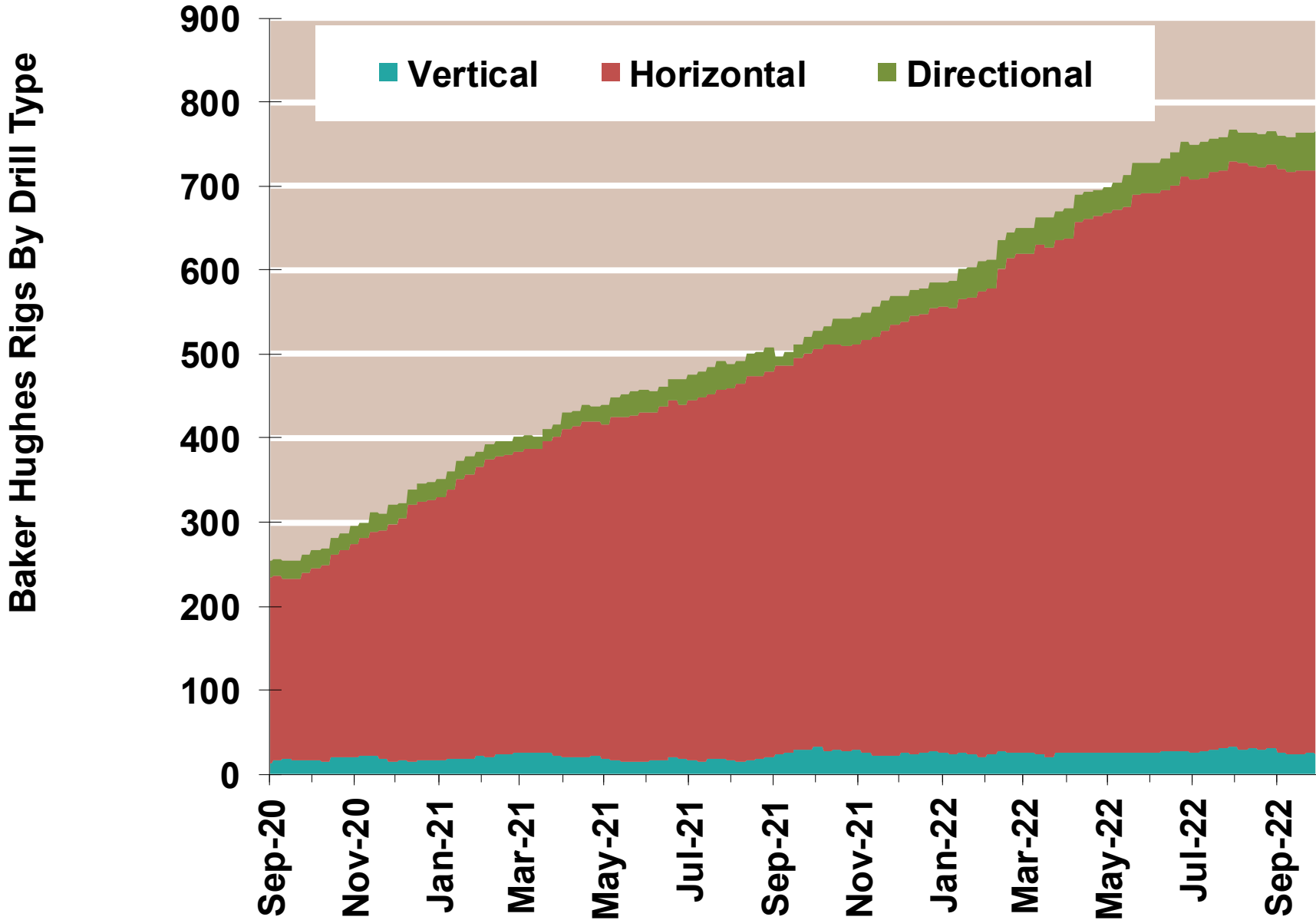
NG Rigs by Fuel Type

Federal Energy Regulatory Commission **Market Assessments**



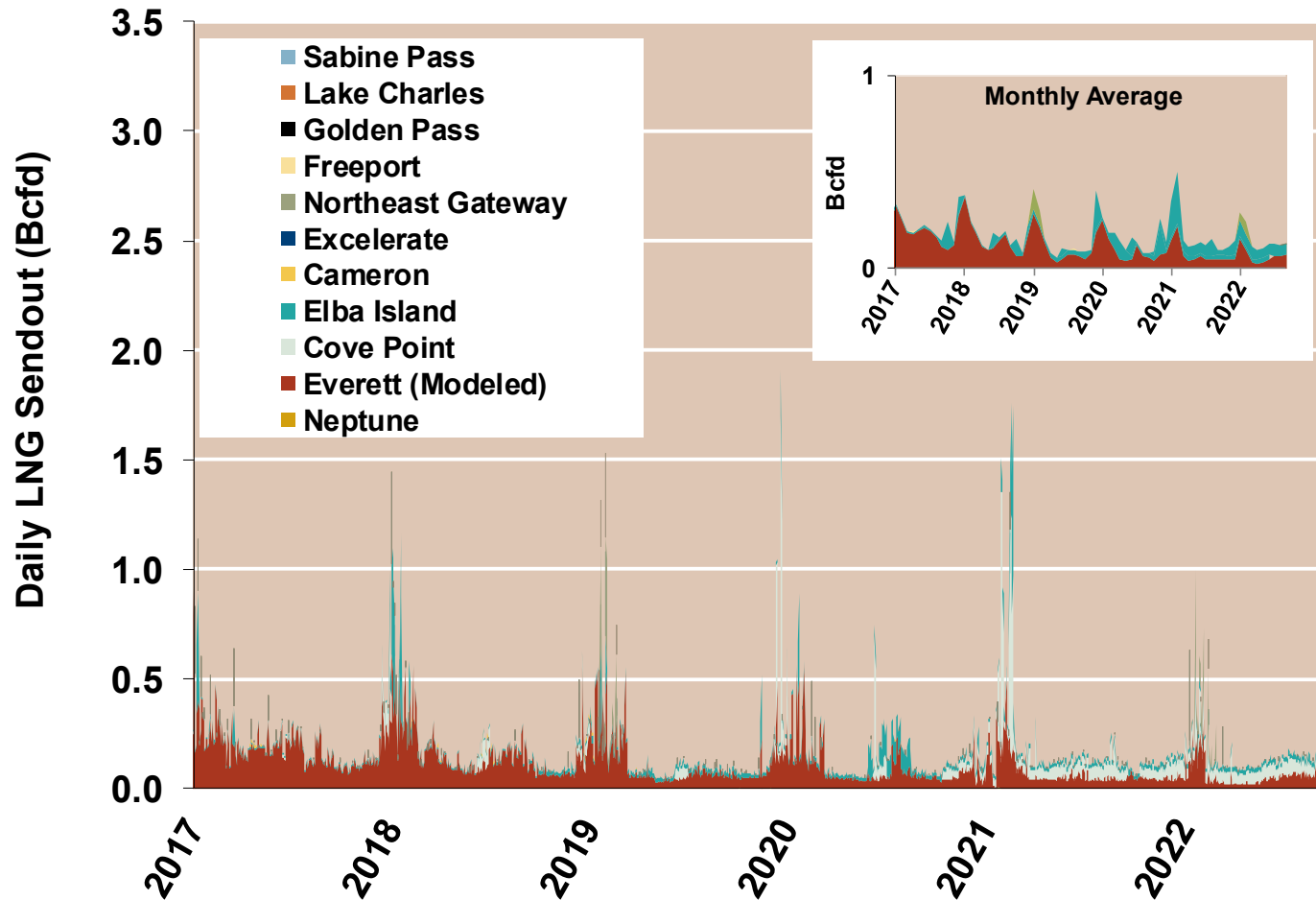
NG Rig by Direction

Federal Energy Regulatory Commission **Market Assessments**



Daily Gas Sendout from Existing U.S. LNG Facilities

Federal Energy Regulatory Commission **Market Assessments**



Notes: Everett data includes flows onto the AGT and TGP interstate lines, plus estimates of flows to the Mystic 7 power plant, Keyspan Boston Gas, and LNG trucked out of the terminal. Excludes flows to the Freeport LNG which flows via intrastate pipelines.

Source: Derived from S&P Global Bentek Energy data

Updated: Oct-2022

U.S. Exports of LNG

Federal Energy Regulatory Commission **Market Assessments**

