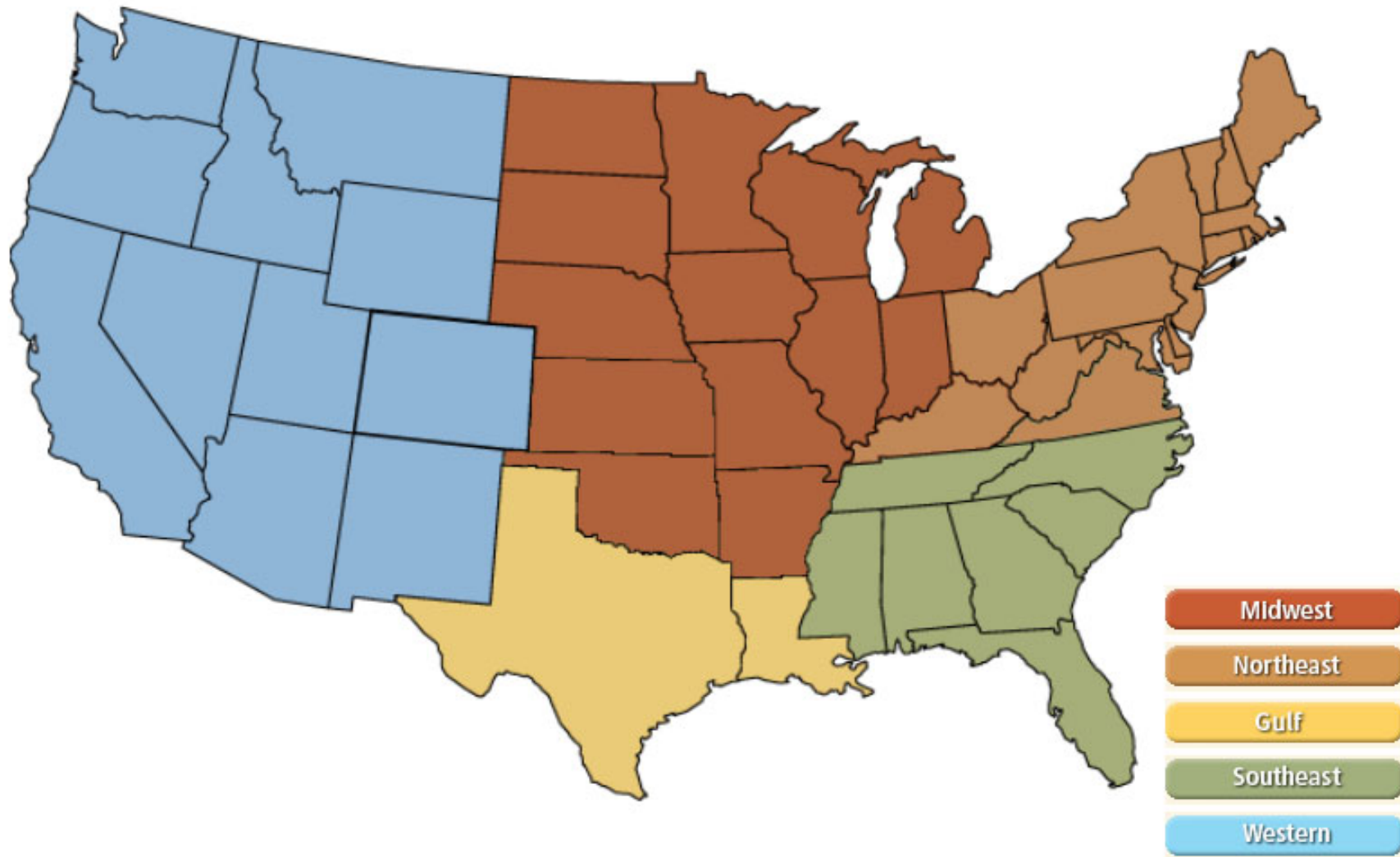


# National

Federal Energy Regulatory Commission **Market Assessments**



# NOAA 3 Month Outlook

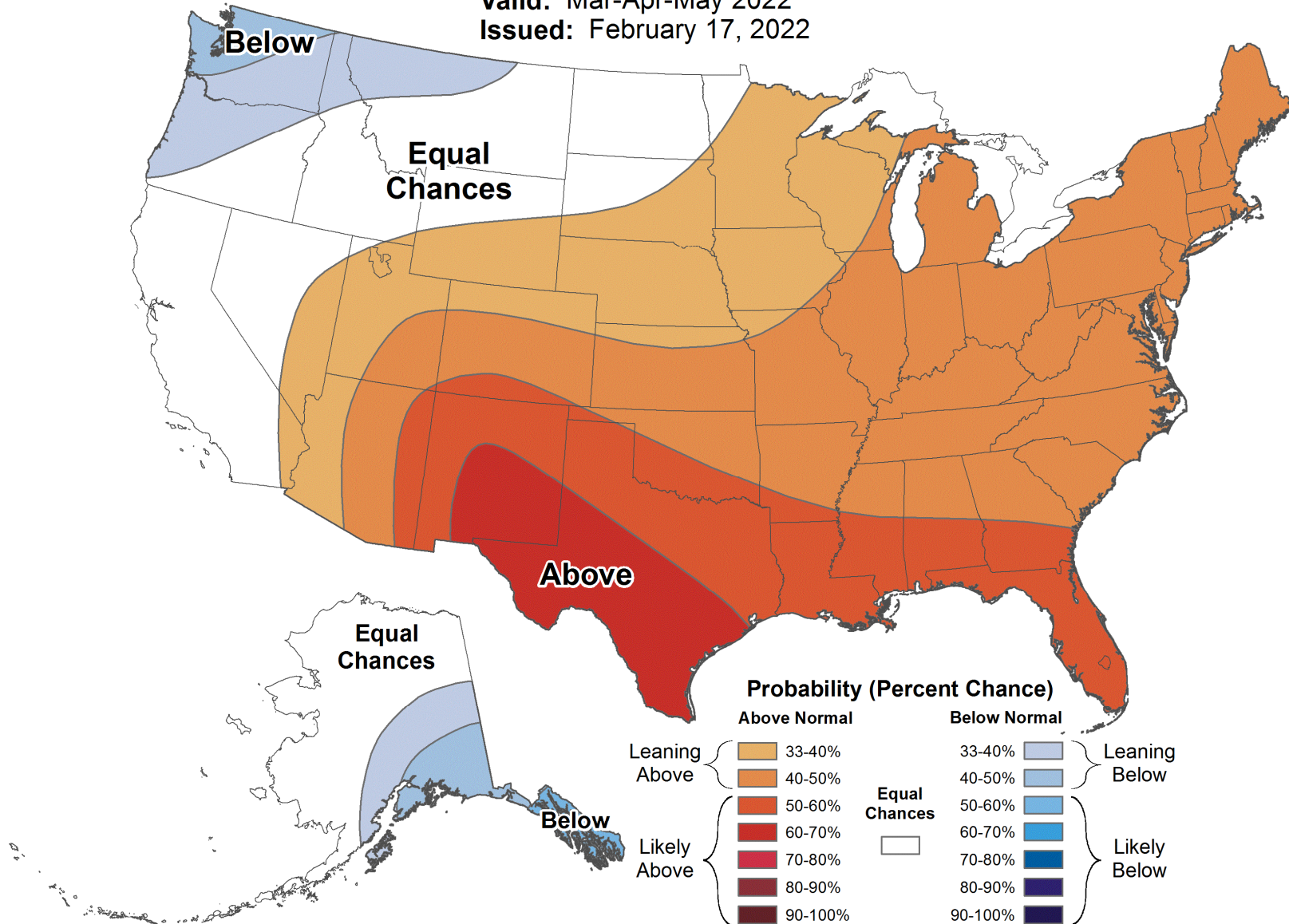
Federal Energy Regulatory Commission **Market Assessments**



## Seasonal Temperature Outlook

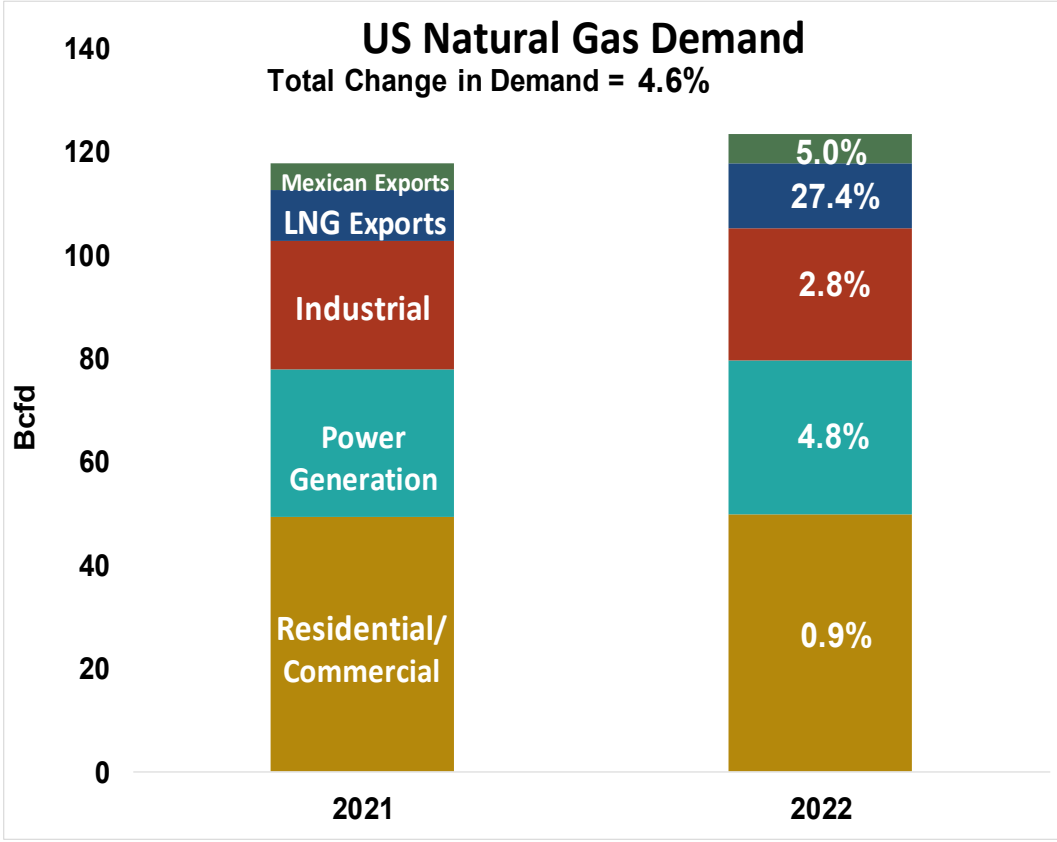
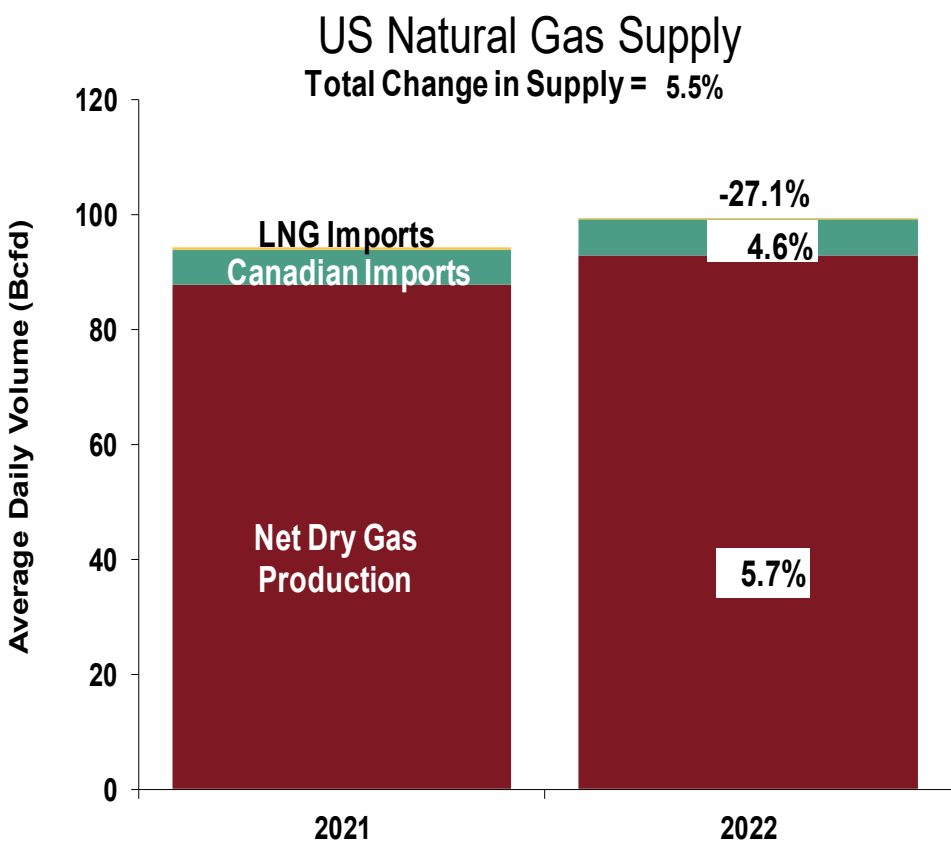


Valid: Mar-Apr-May 2022  
Issued: February 17, 2022



# U.S. NG Supply and Demand Feb-21 YTD vs. Feb-22 YTD

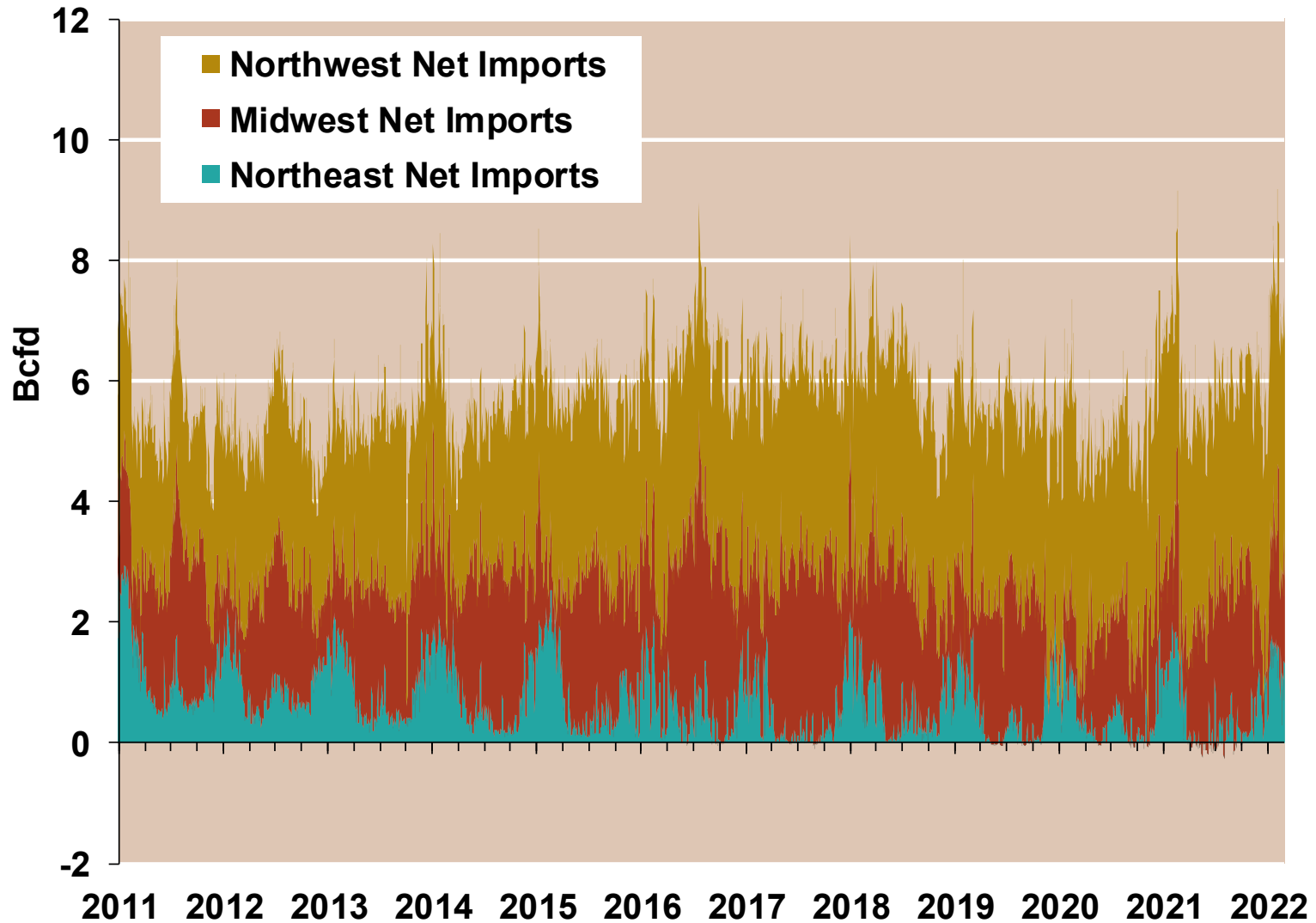
Federal Energy Regulatory Commission **Market Assessments**



Note: Balance includes all amounts not attributable to other categories.  
 Source: Derived from S&P Global Bentek Energy data

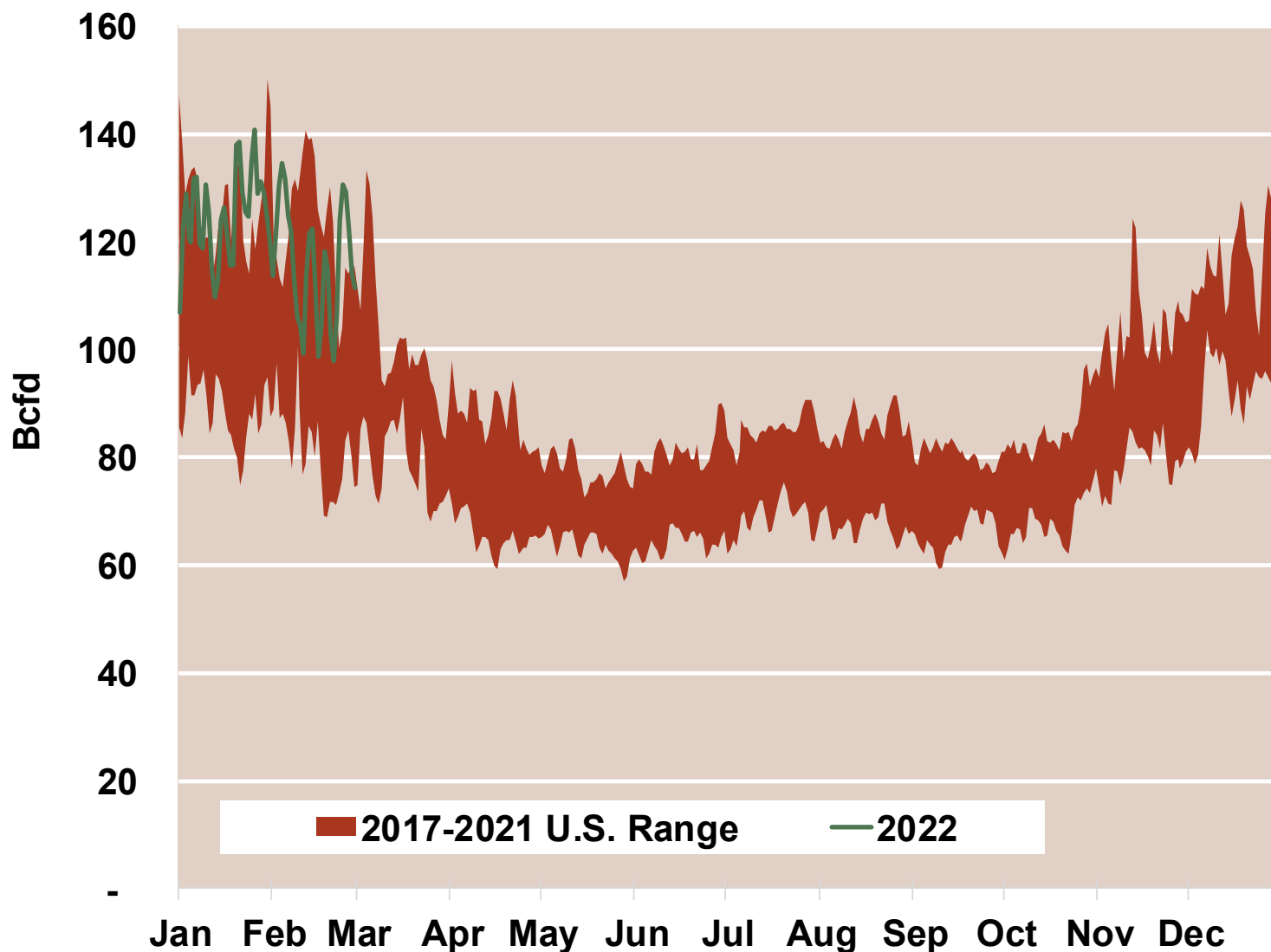
# Regional Canadian Imports

Federal Energy Regulatory Commission **Market Assessments**



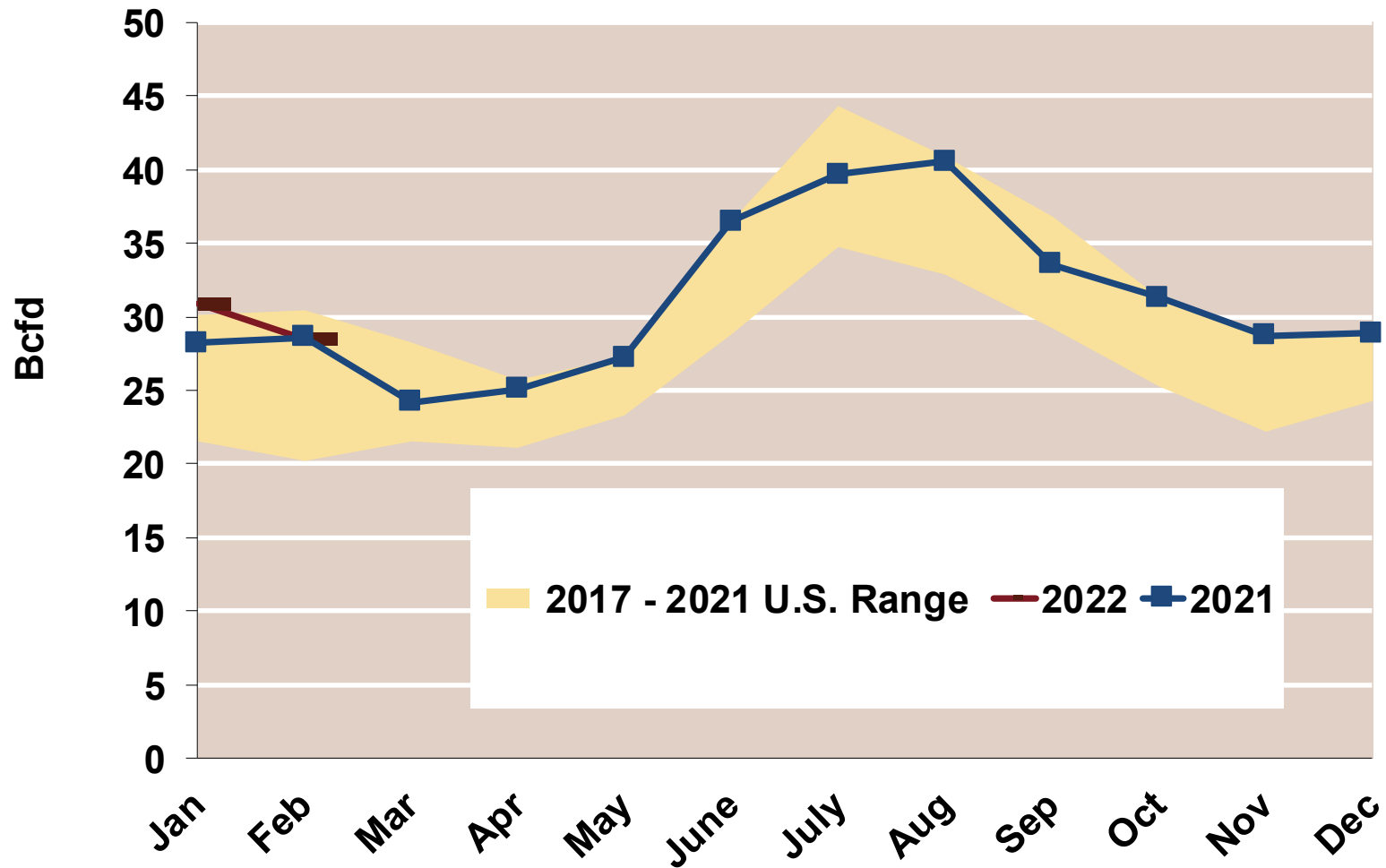
# Total U.S. Natural Gas Demand All Sectors

Federal Energy Regulatory Commission **Market Assessments**



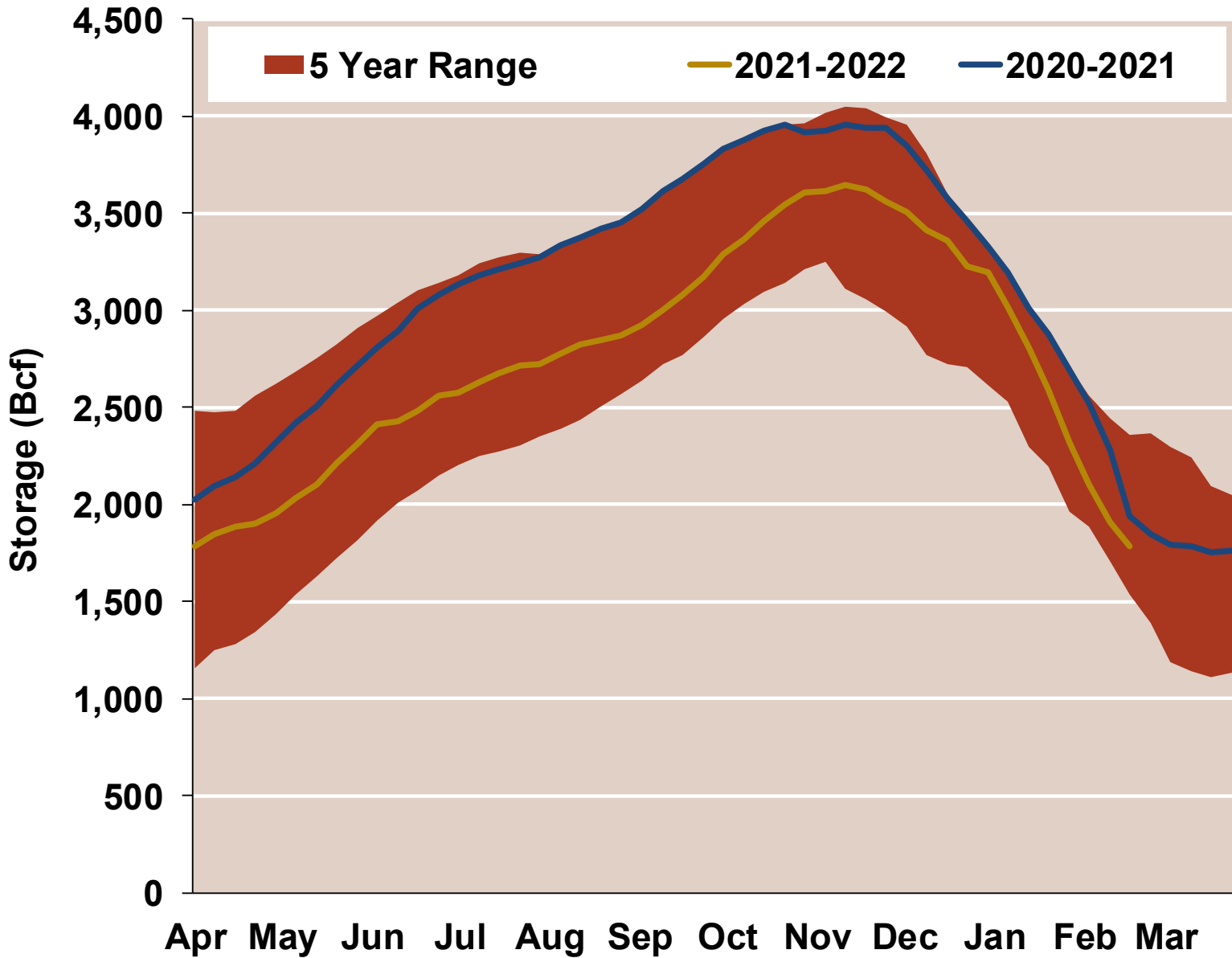
# U.S. Natural Gas Consumption for Power Generation

Federal Energy Regulatory Commission **Market Assessments**



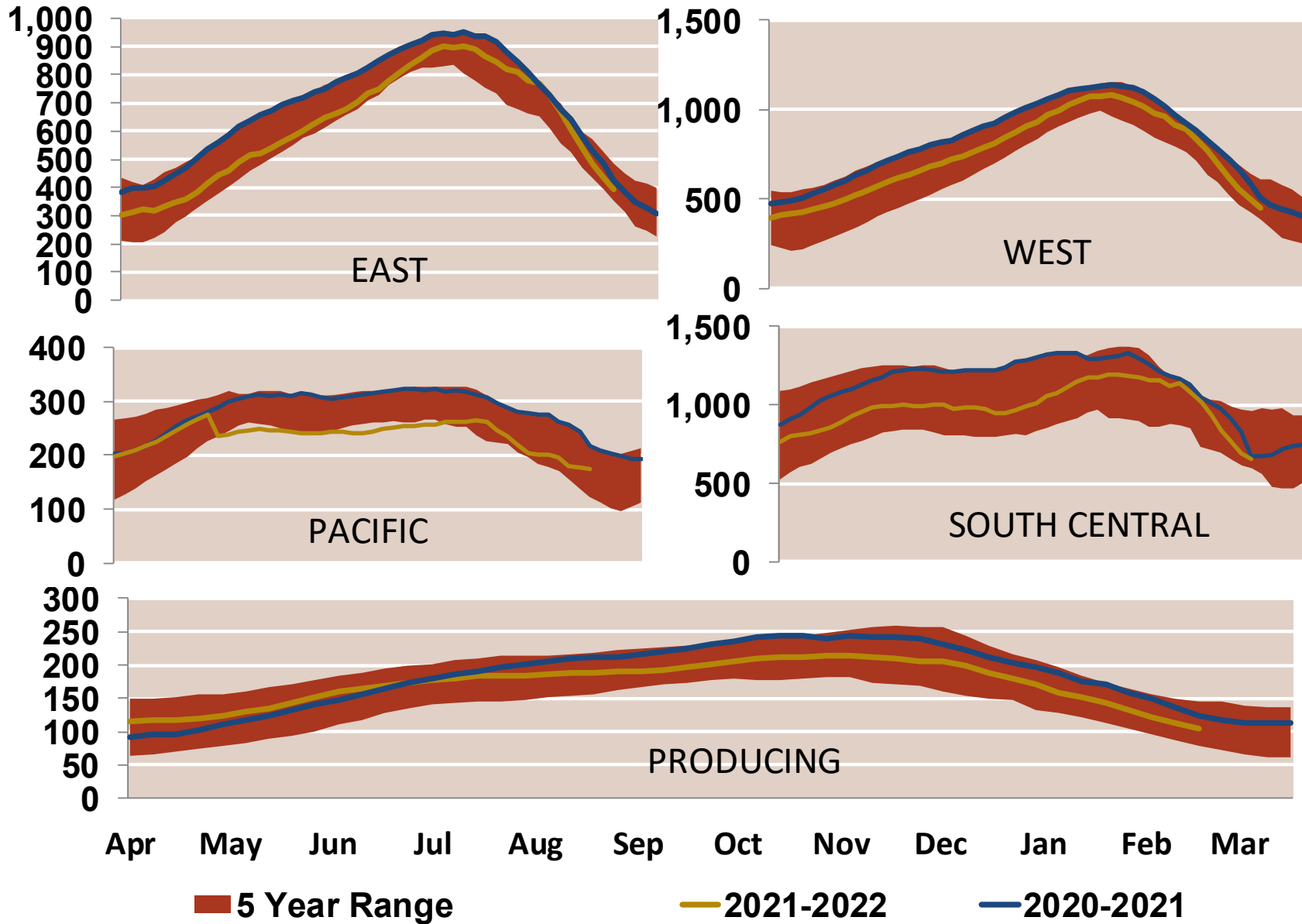
# EIA Storage Inventories

Federal Energy Regulatory Commission **Market Assessments**



# EIA Storage Inventories

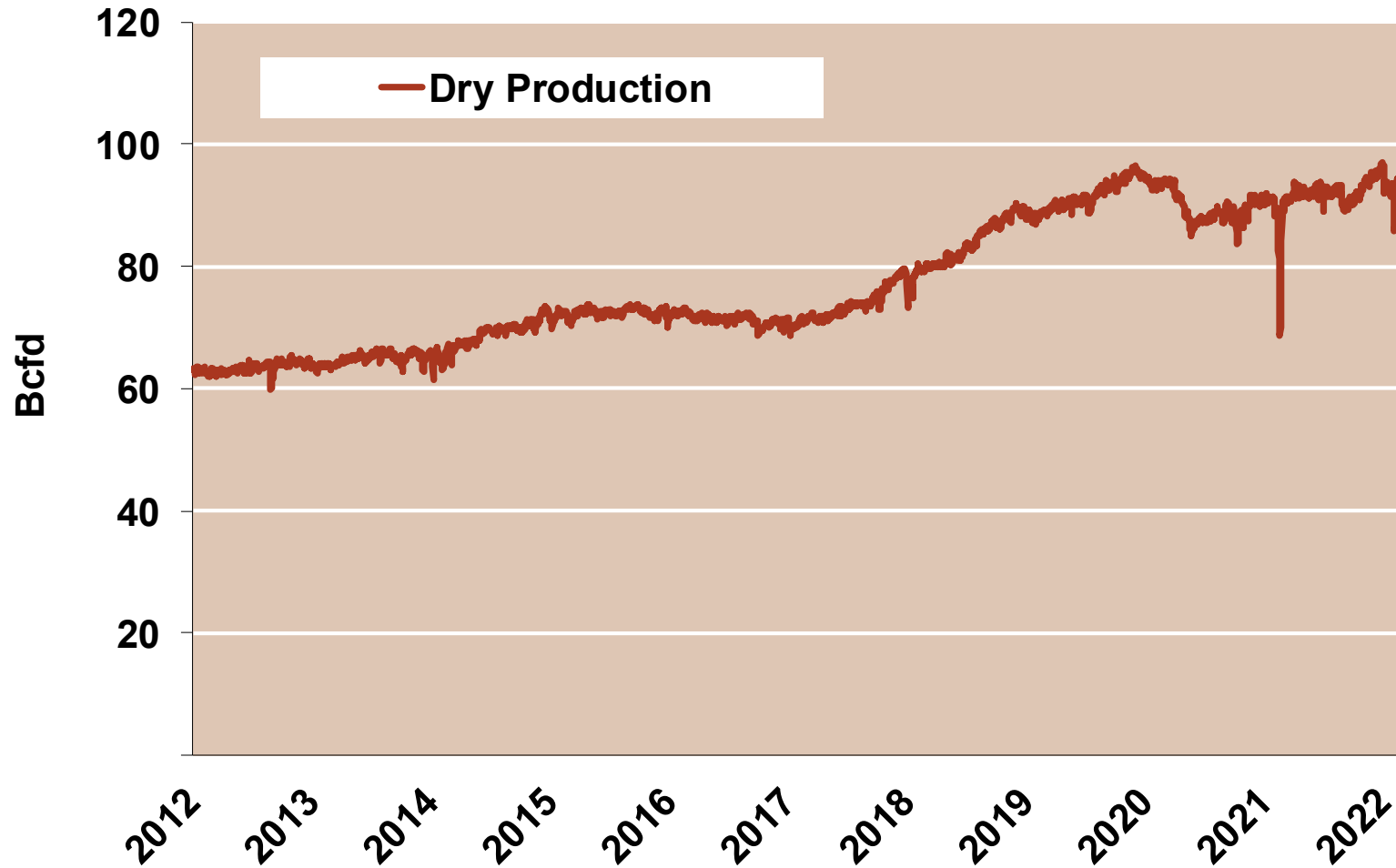
Federal Energy Regulatory Commission **Market Assessments**





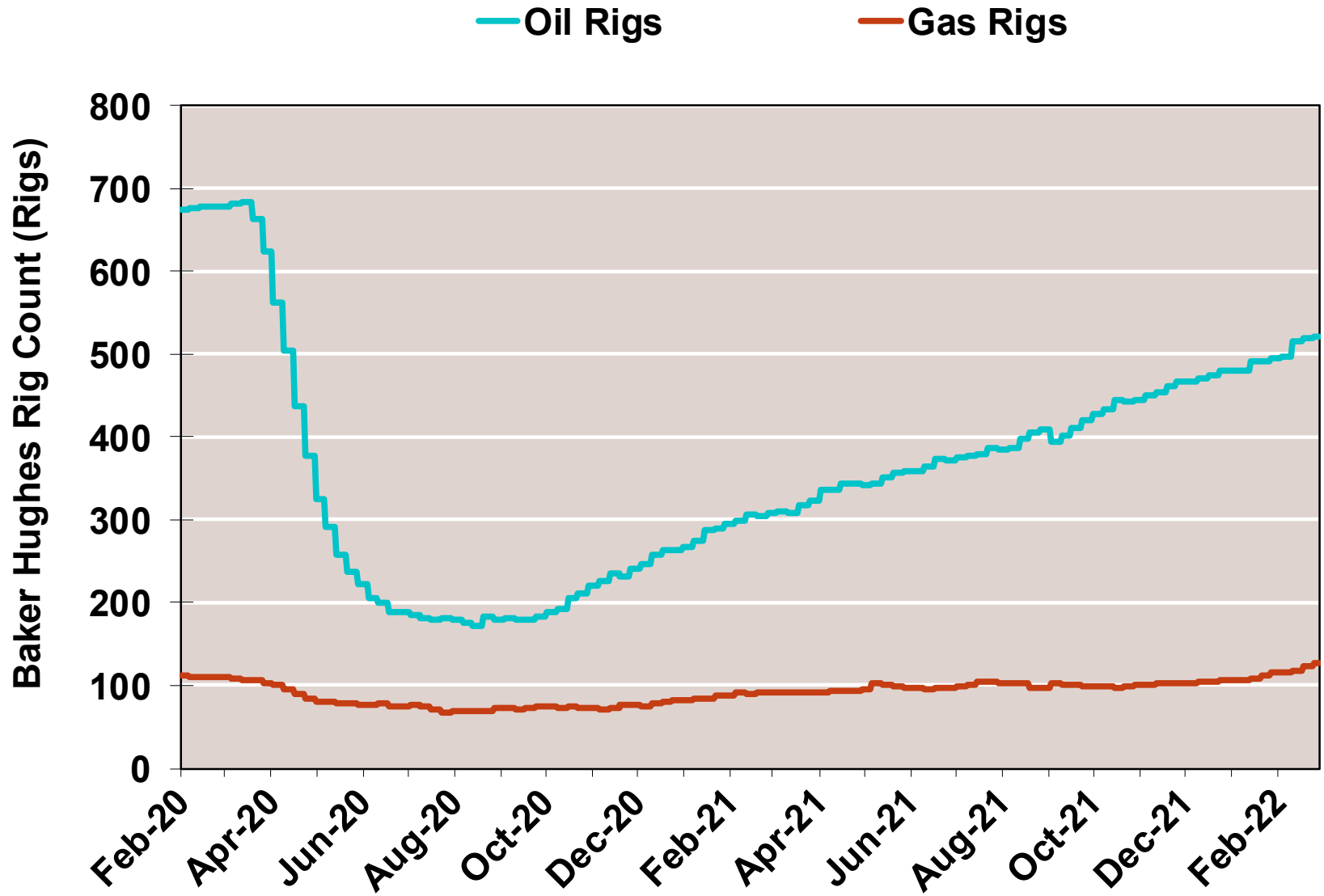
# Monthly U.S. Dry Gas Production – Lower 48 States

Federal Energy Regulatory Commission **Market Assessments**



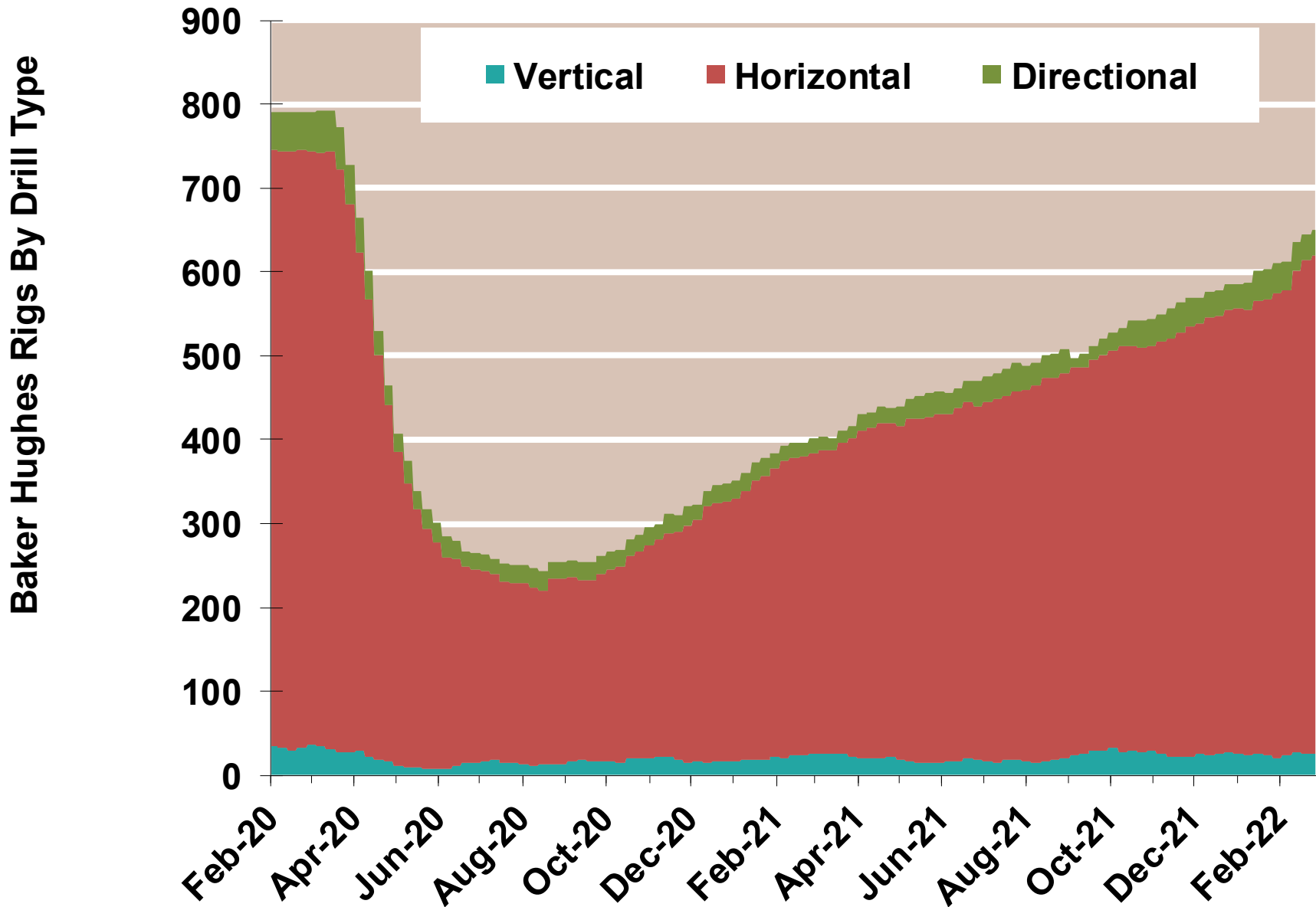
# NG Rigs by Fuel Type

Federal Energy Regulatory Commission **Market Assessments**



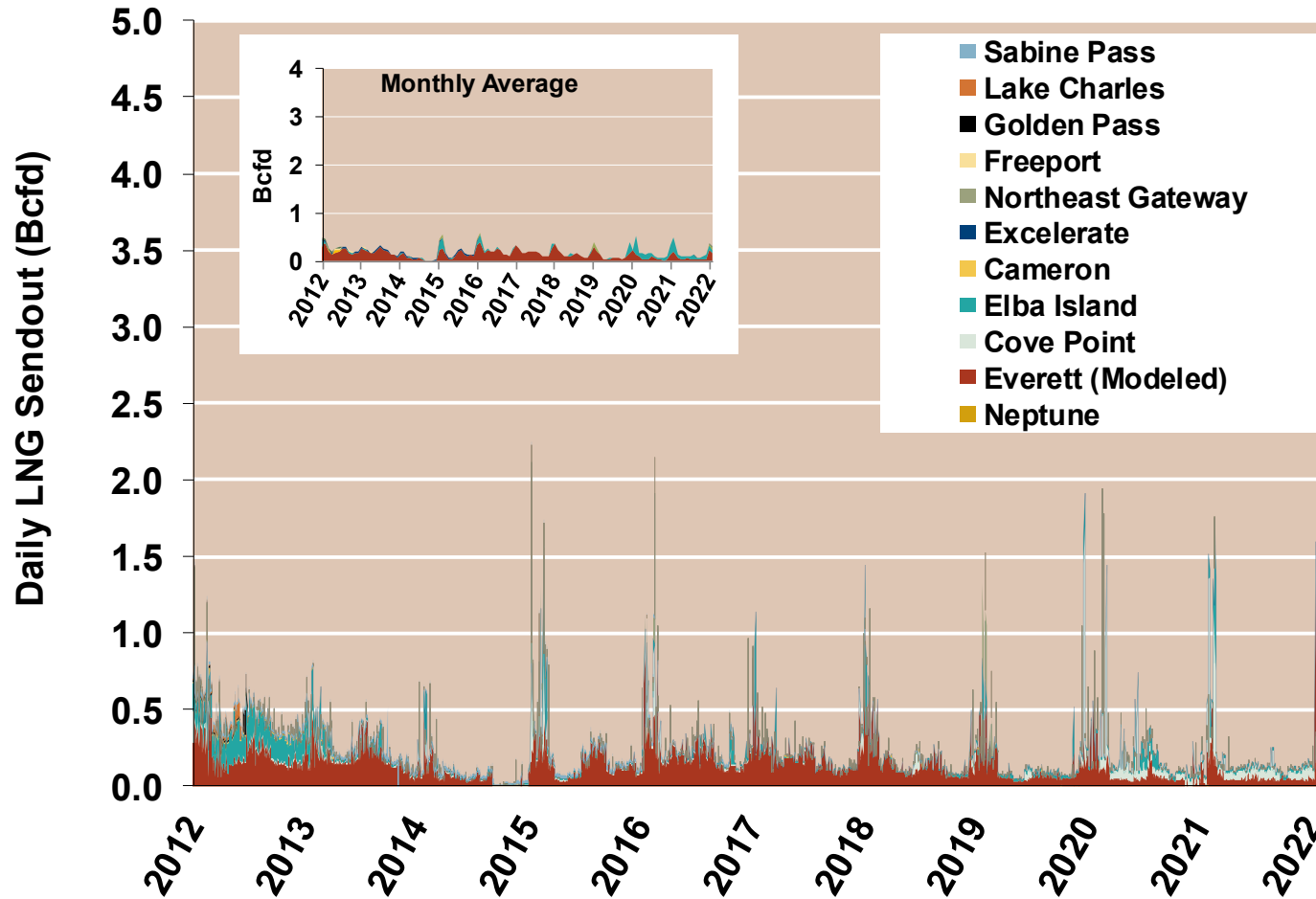
# NG Rig by Direction

Federal Energy Regulatory Commission **Market Assessments**



# Daily Gas Sendout from Existing U.S. LNG Facilities

Federal Energy Regulatory Commission **Market Assessments**



Notes: Everett data includes flows onto the AGT and TGP interstate lines, plus estimates of flows to the Mystic 7 power plant, Keyspan Boston Gas, and LNG trucked out of the terminal. Excludes flows to the Freeport LNG which flows via intrastate pipelines.

Source: Derived from S&P Global Bentek Energy data

Updated: Mar-2022

# U.S. Exports of LNG

Federal Energy Regulatory Commission **Market Assessments**

