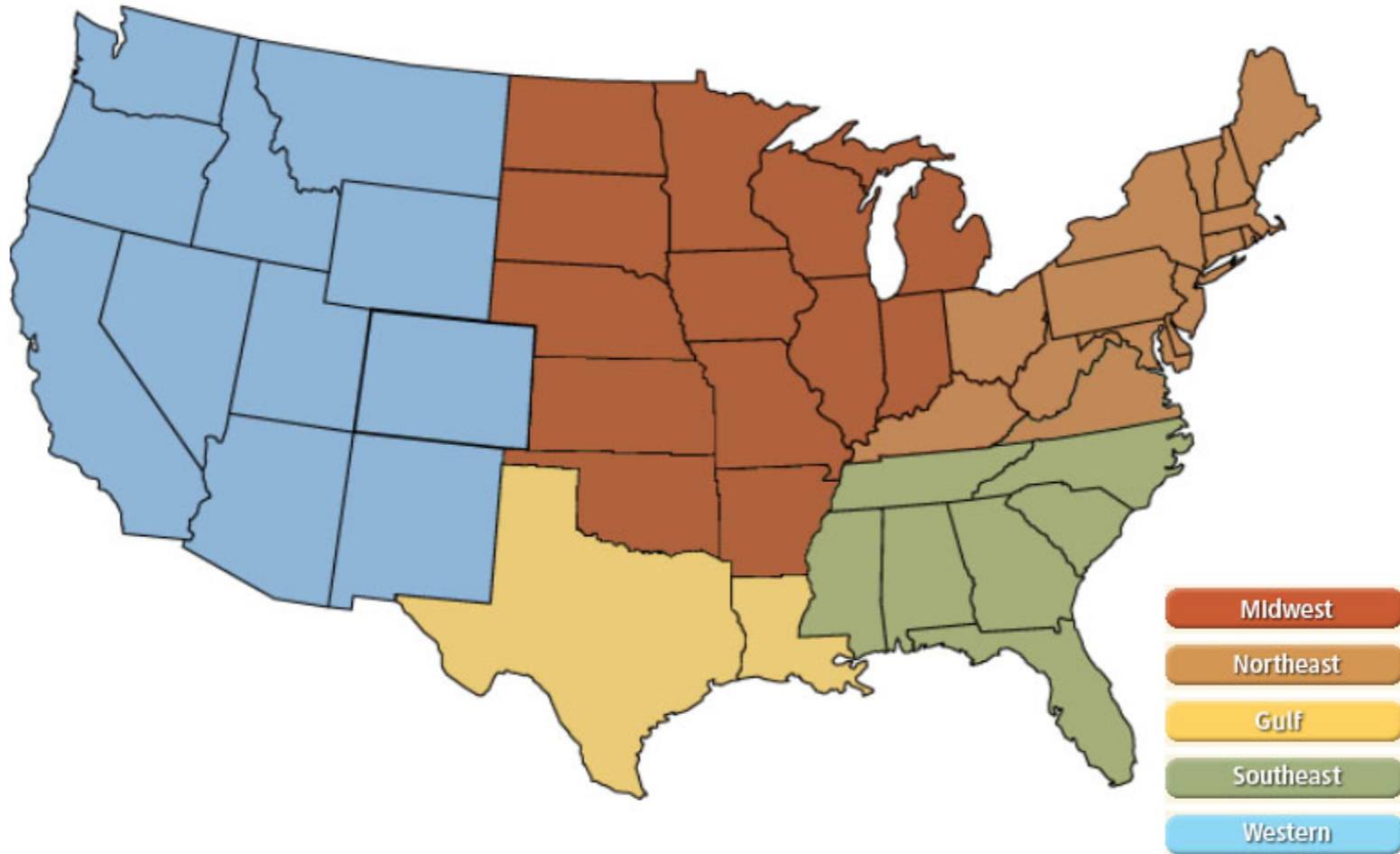


National

Federal Energy Regulatory Commission **Market Assessments**



NOAA 3 Month Outlook

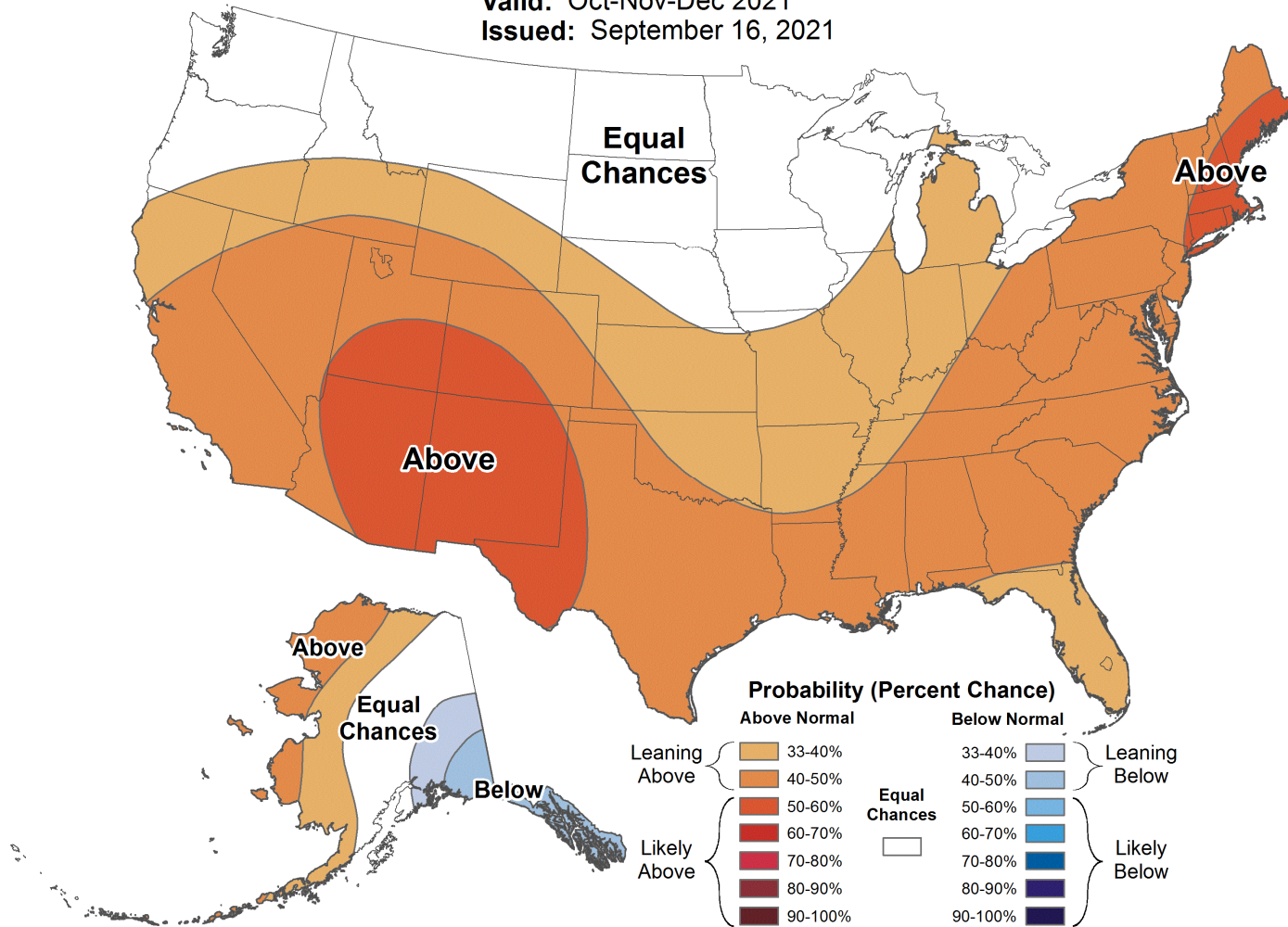
Federal Energy Regulatory Commission **Market Assessments**



Seasonal Temperature Outlook



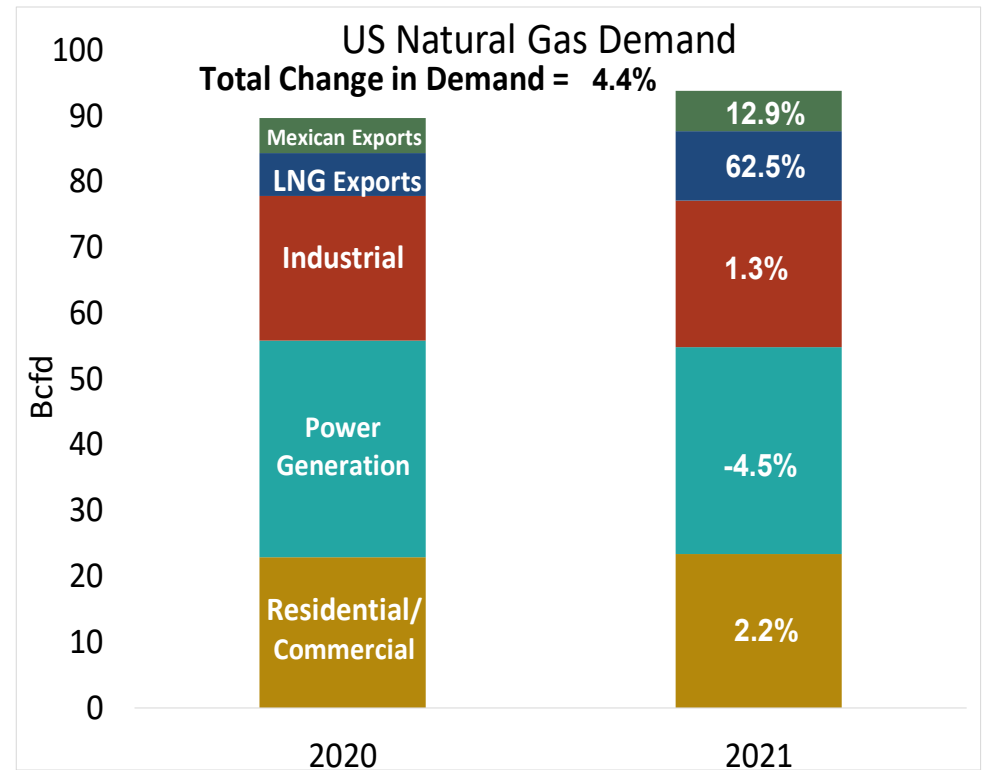
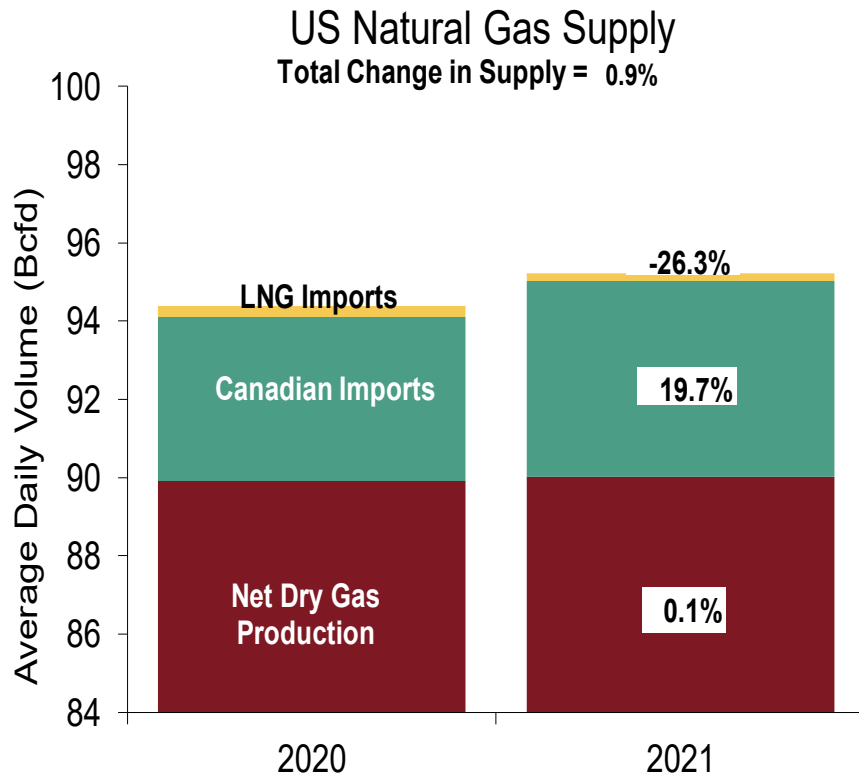
Valid: Oct-Nov-Dec 2021
Issued: September 16, 2021



National Natural Gas Market Overview: U.S. Supply and Consumption

U.S. NG Supply and Demand Sep-20 YTD vs. Sep-21 YTD

Federal Energy Regulatory Commission Market Assessments

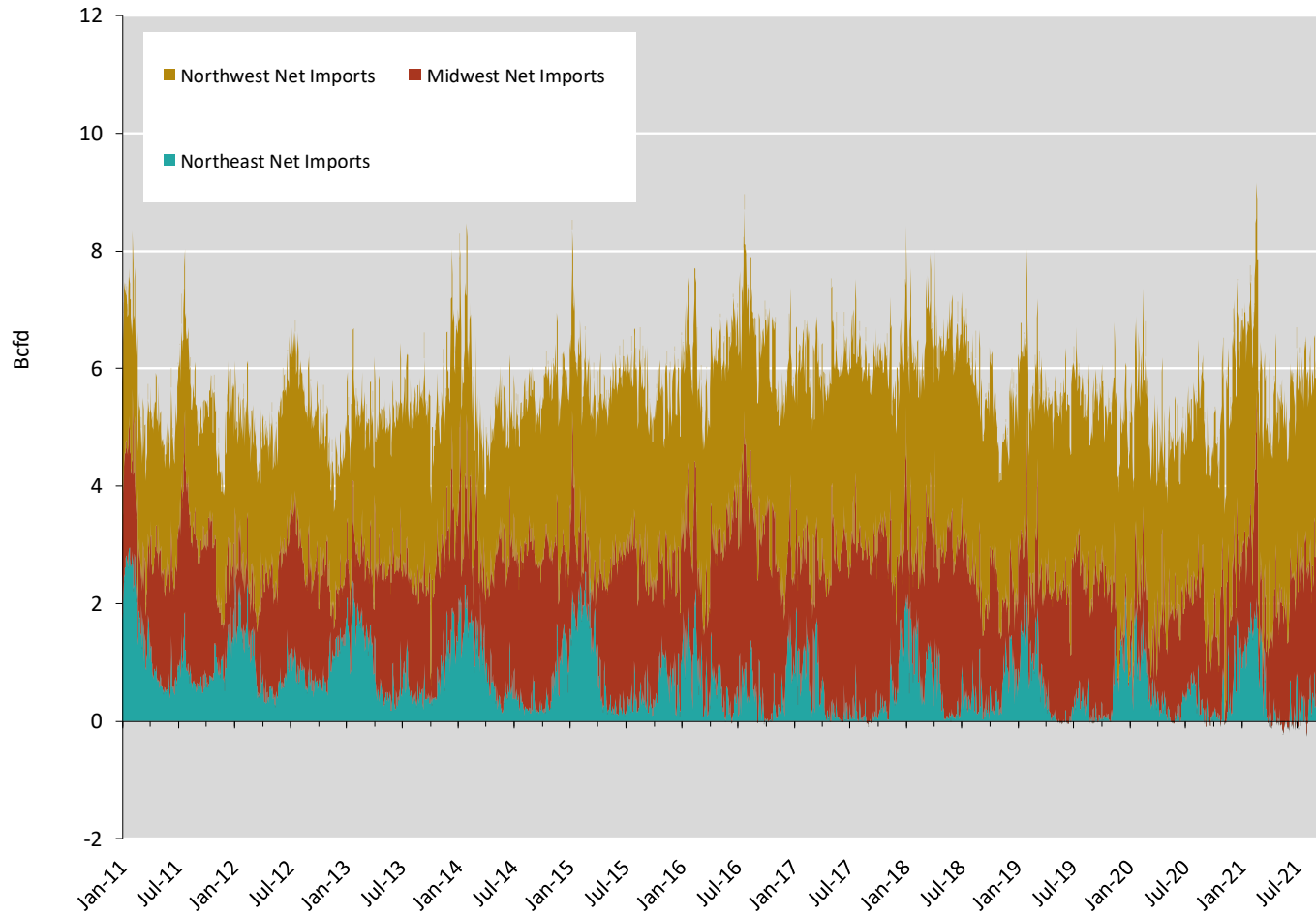


Note: Balance includes all amounts not attributable to other categories.
 Source: Derived from S&P Global Bentek Energy data

National Natural Gas Market Overview: Canadian Imports

Regional Canadian Imports

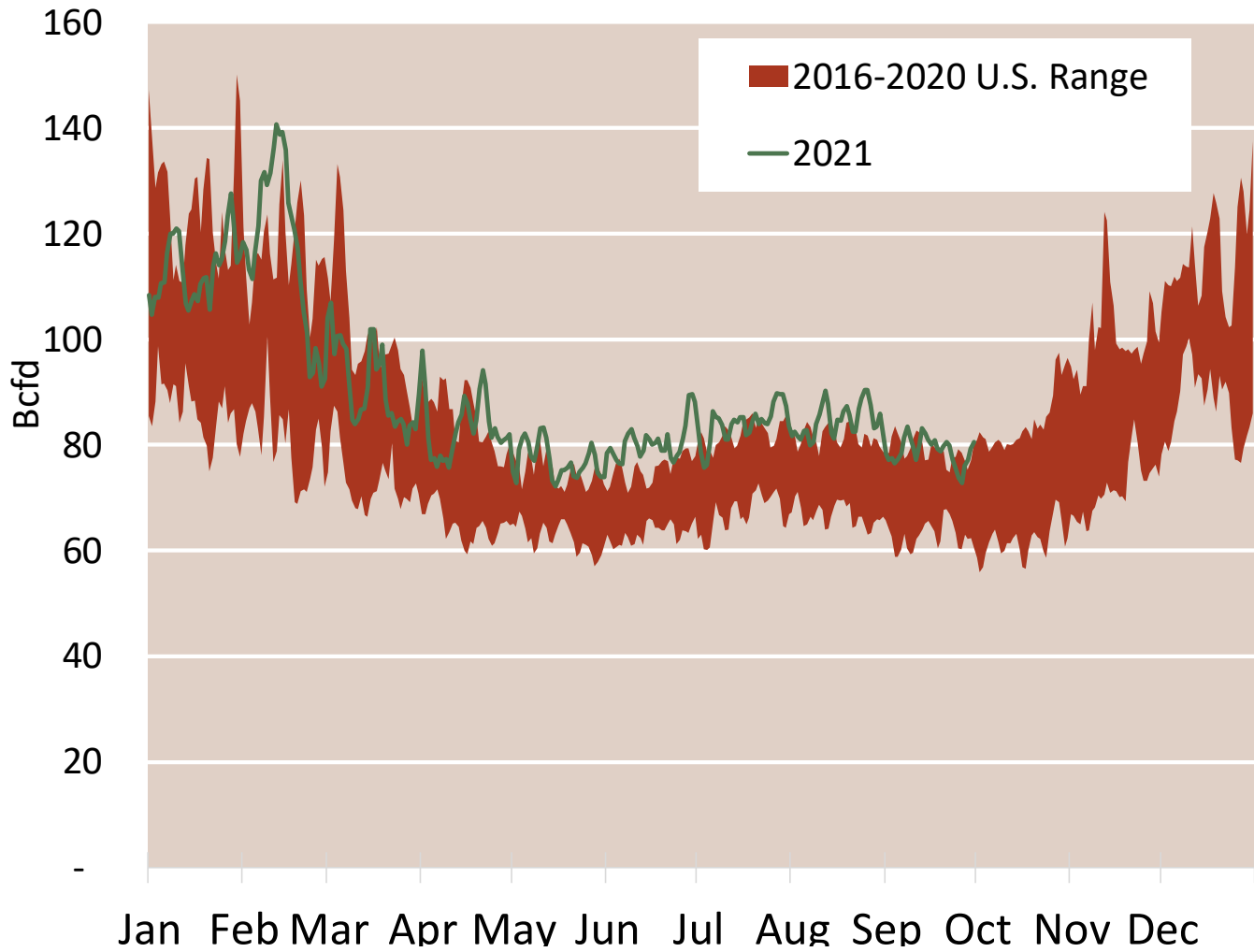
Federal Energy Regulatory Commission **Market Assessments**



National Natural Gas Market Overview: Total US Gas Demand

Total U.S. Natural Gas Demand All Sectors

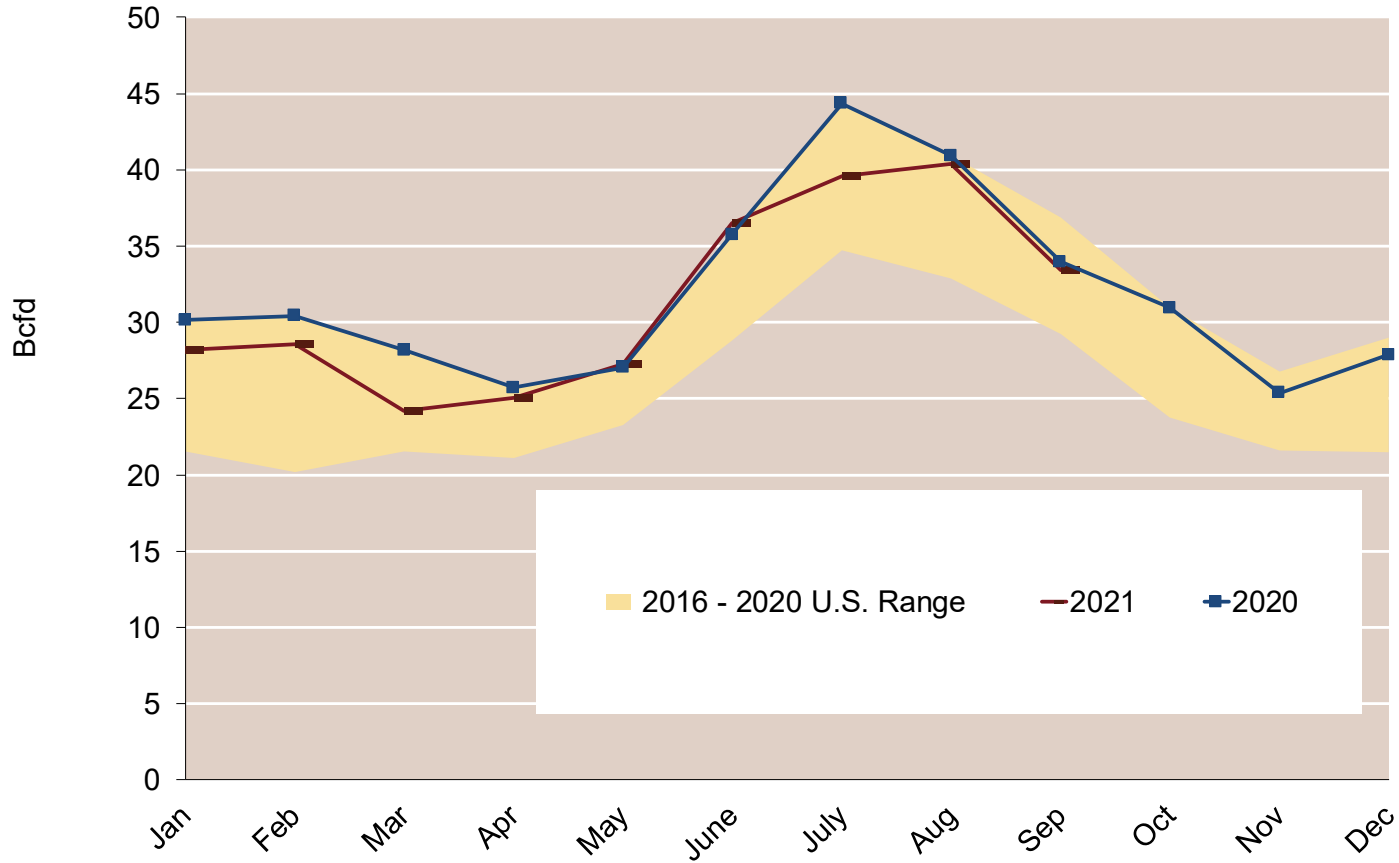
Federal Energy Regulatory Commission Market Assessments



Source: Derived from S&P Global Bentek Energy data, derived from interstate pipeline flow and modeled data.

U.S. Natural Gas Consumption for Power Generation

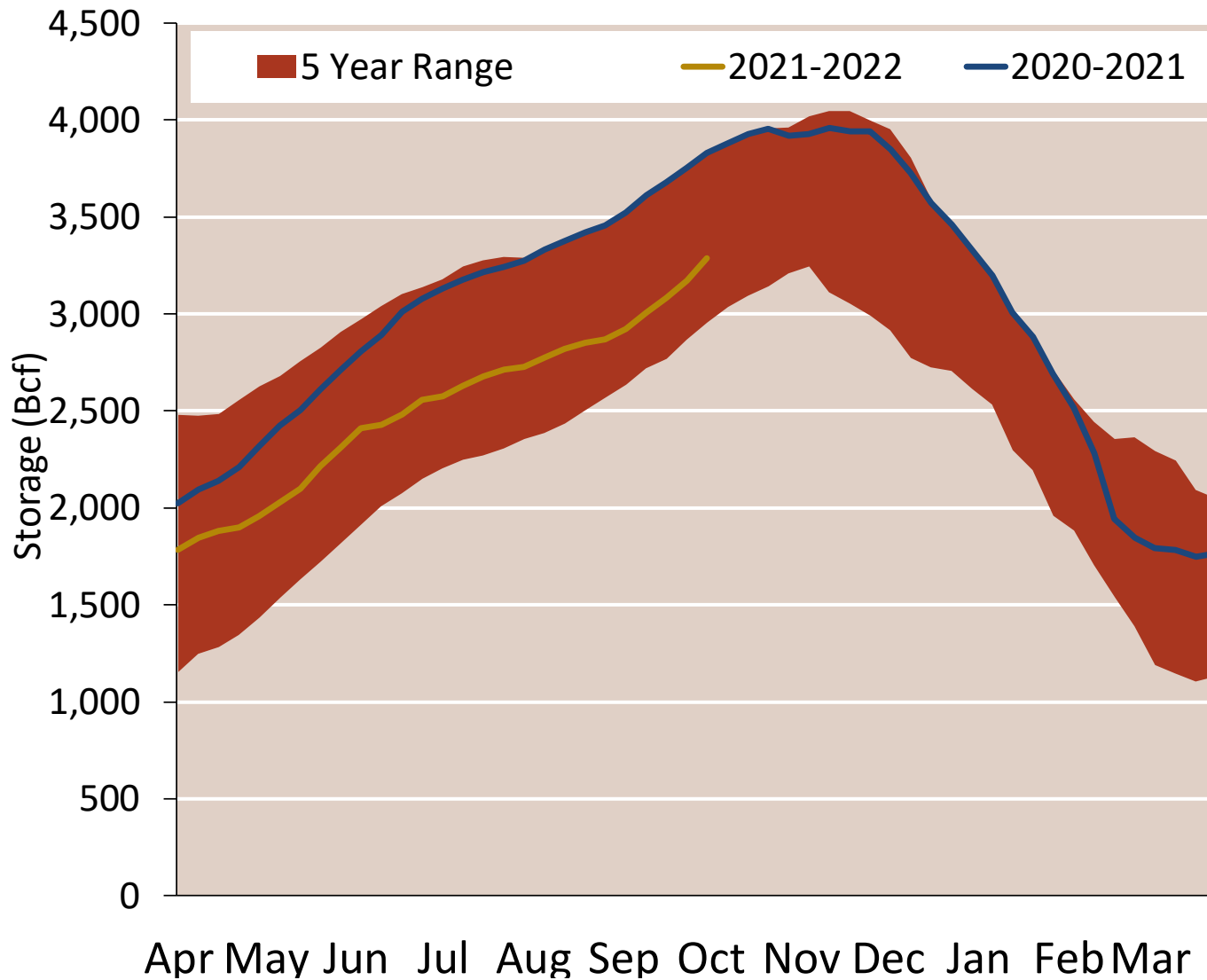
Federal Energy Regulatory Commission **Market Assessments**



National Natural Gas Market Overview: Natural Gas Storage Inventory

EIA Storage Inventories

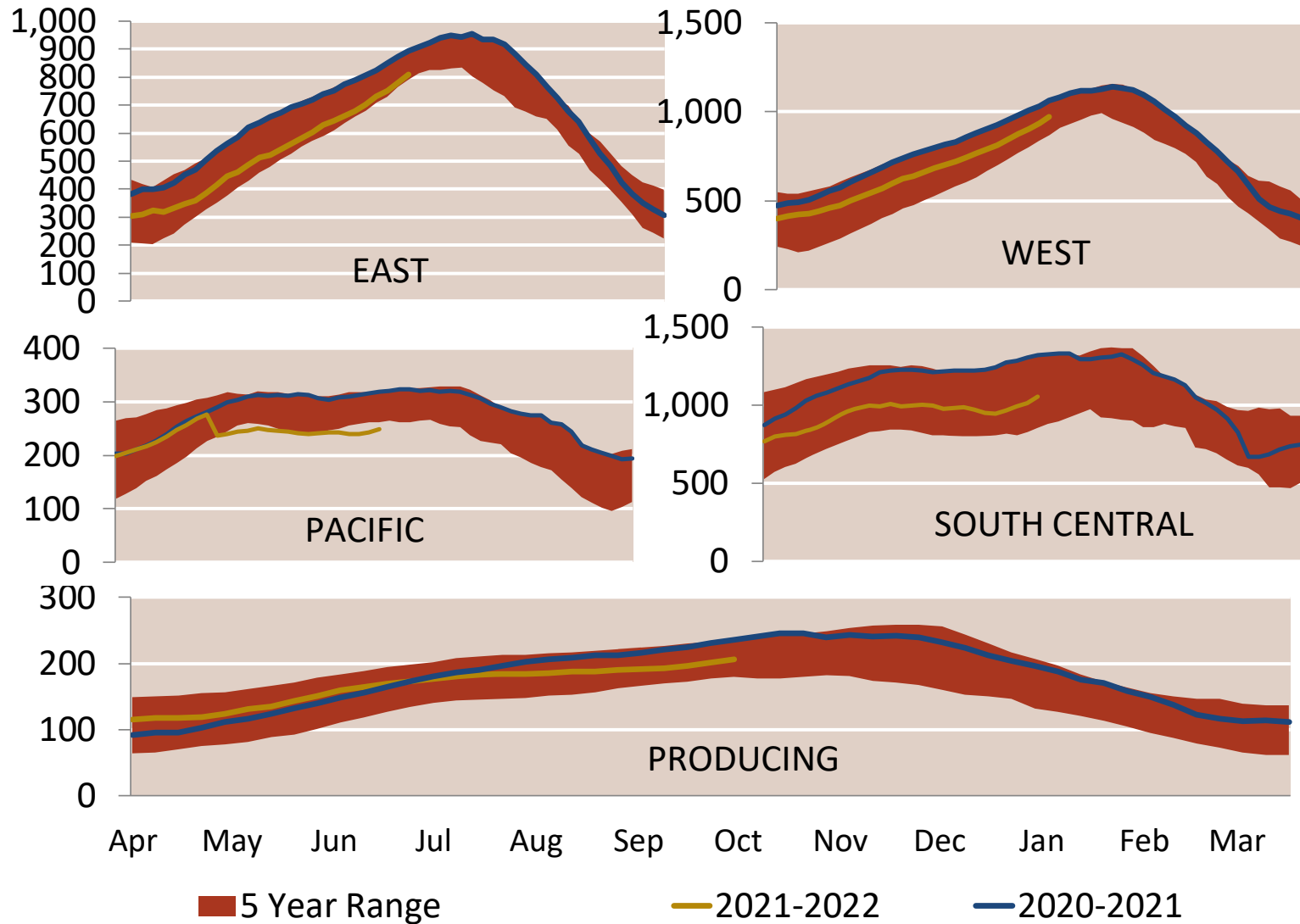
Federal Energy Regulatory Commission **Market Assessments**



National Natural Gas Market Overview: Regional Natural Gas Storage Inventory

EIA Storage Inventories

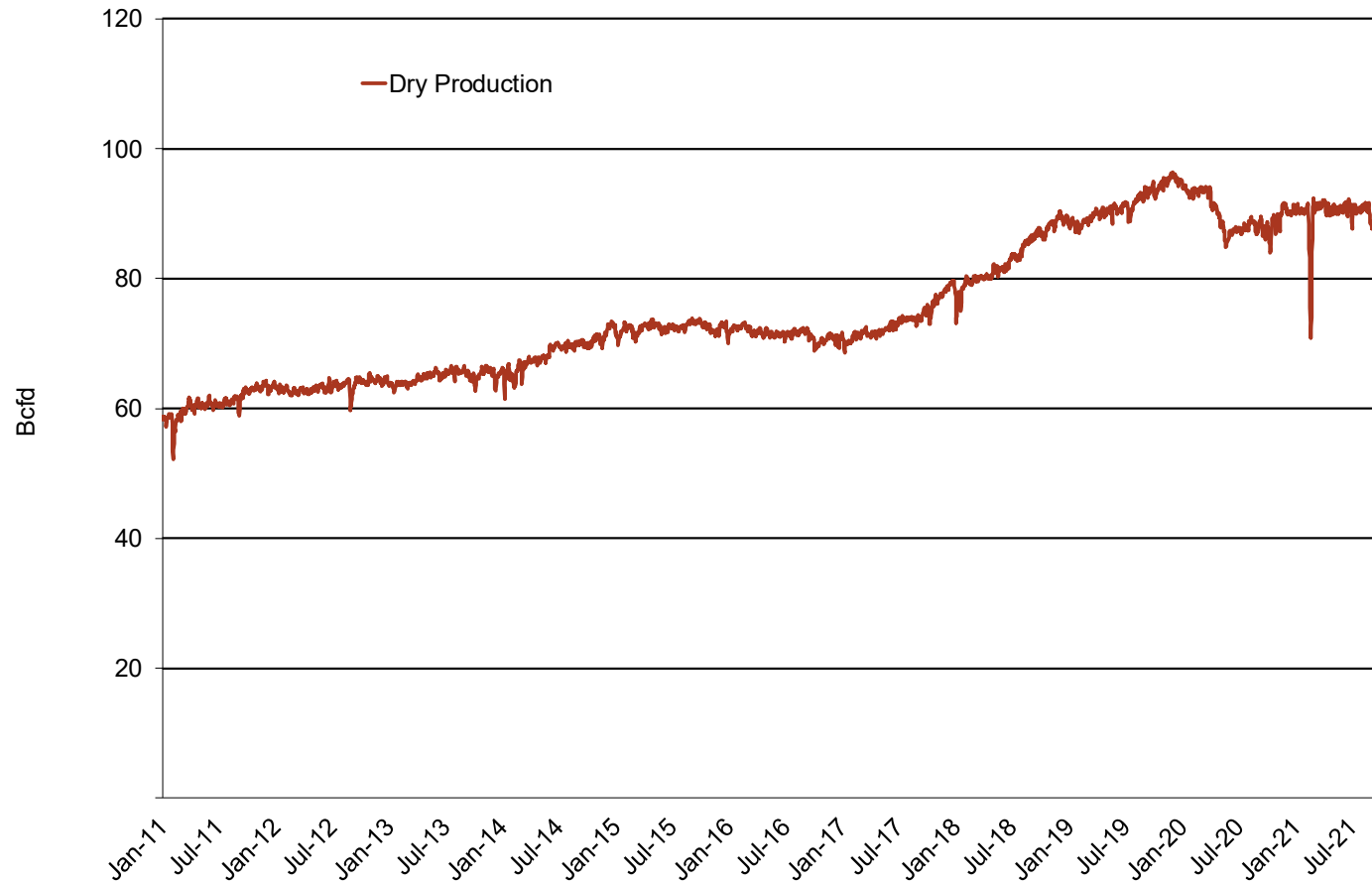
Federal Energy Regulatory Commission **Market Assessments**



National Natural Gas Market Overview: Monthly U.S. Dry Gas Production

Monthly U.S. Dry Gas Production – Lower 48 States

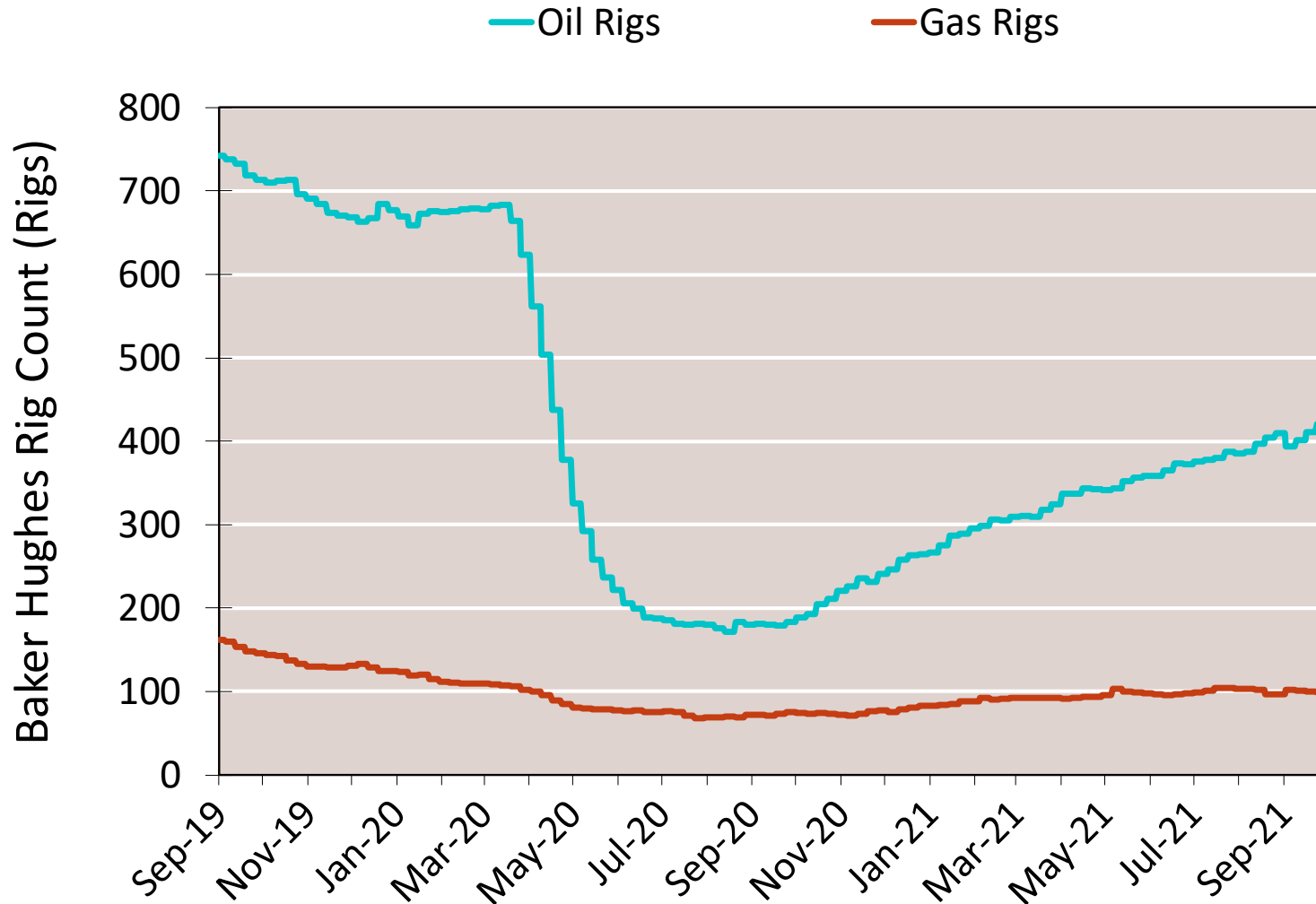
Federal Energy Regulatory Commission Market Assessments



National Natural Gas Market Overview: Rig Count by Type

NG Rigs by Fuel Type

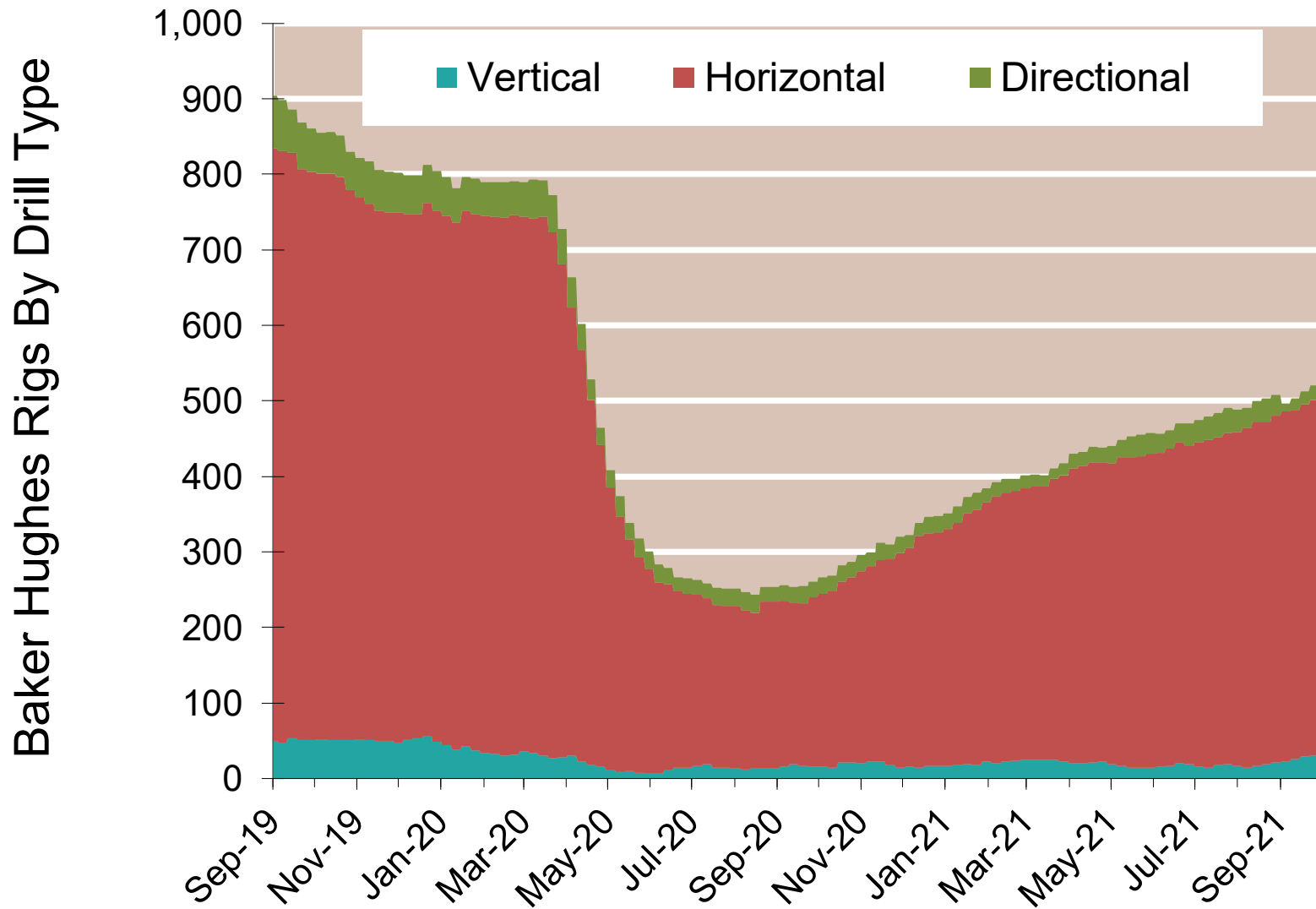
Federal Energy Regulatory Commission **Market Assessments**



National Natural Gas Market Overview: Rig Count by Direction

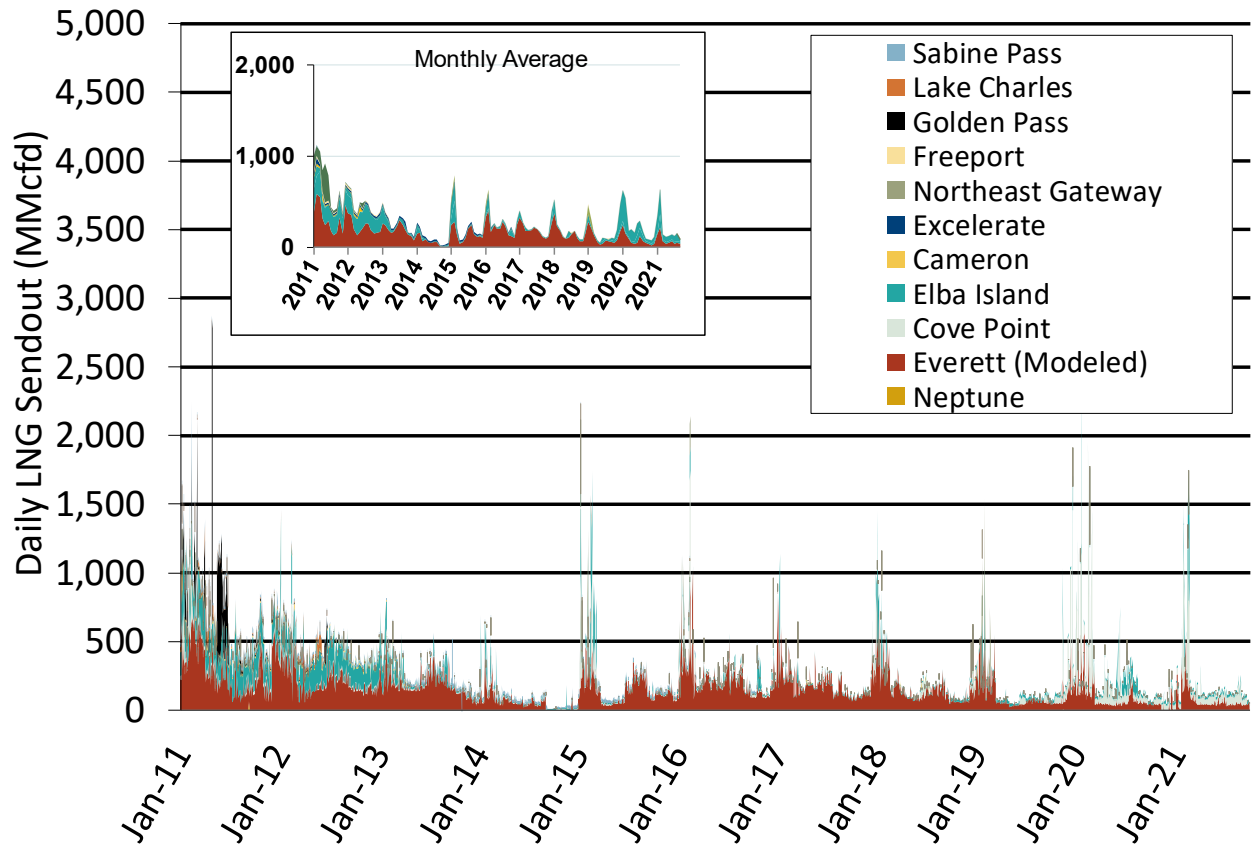
NG Rig by Direction

Federal Energy Regulatory Commission **Market Assessments**



Daily Gas Sendout from Existing U.S. LNG Facilities

Federal Energy Regulatory Commission **Market Assessments**



Notes: Everett data includes flows onto the AGT and TGP interstate lines, plus estimates of flows to the Mystic 7 power plant, Keyspan Boston Gas, and LNG trucked out of the terminal. Excludes flows to the Freeport LNG which flows via intrastate pipelines.

Source: Derived from S&P Global Bentek Energy data

Updated: Oct-2021

World LNG Estimated Landed Prices: Sep-21

Federal Energy Regulatory Commission **Market Assessments**



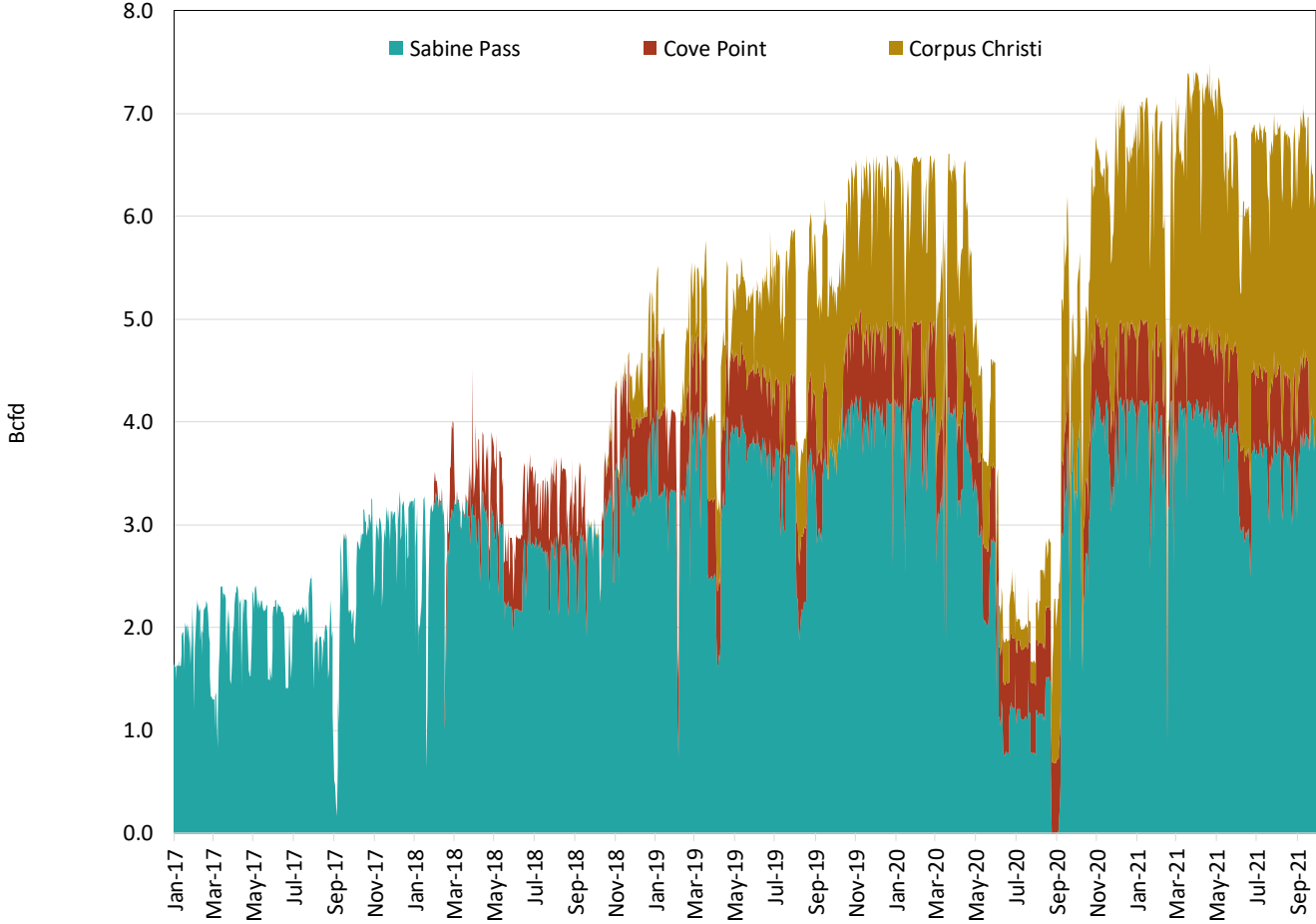
Source: Derived from IHS Global Inc. data. Data in \$US/MMBtu.

Note: Includes information and Data supplied by IHS Global Inc. and its affiliates ("IHS"); Copyright (publication year) all rights reserved. Prices are the monthly average of the weekly landed prices for the listed month. Landed prices are based on a netback calculation.

Updated: Oct-2021

U.S. Exports of LNG

Federal Energy Regulatory Commission **Market Assessments**



Source: Derived from S&P Global Bentek Energy data.