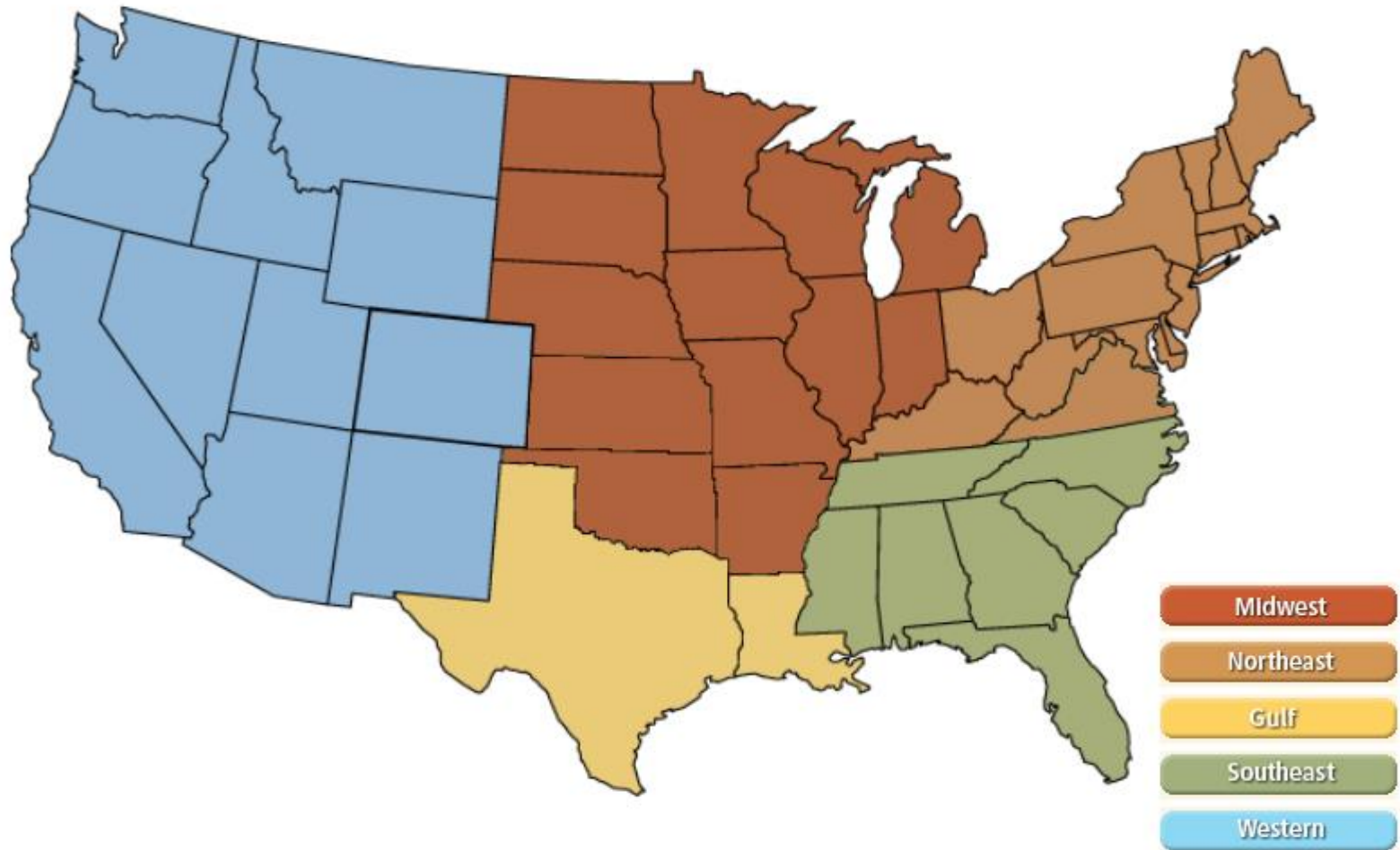


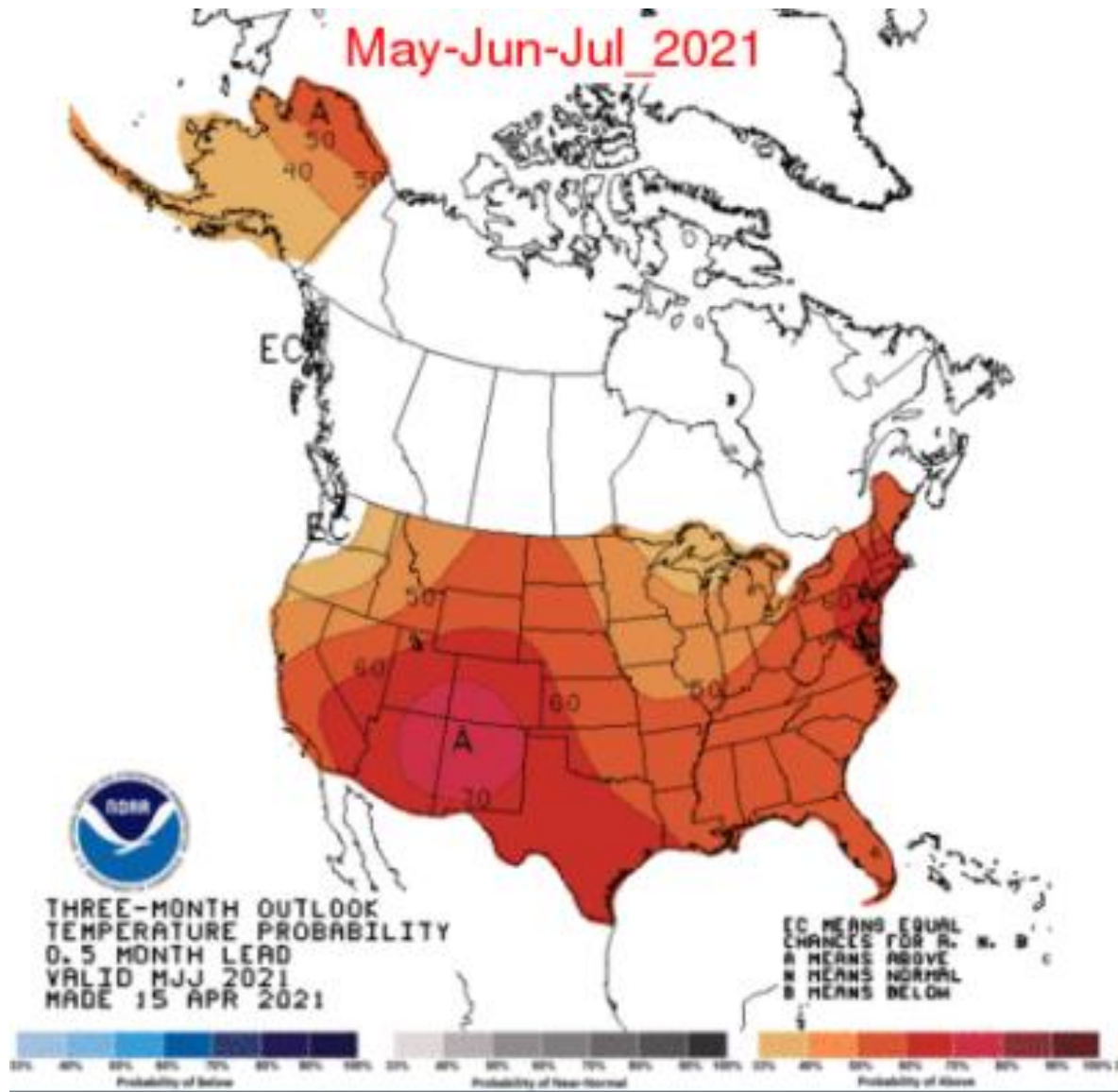
National

Federal Energy Regulatory Commission Market Assessments



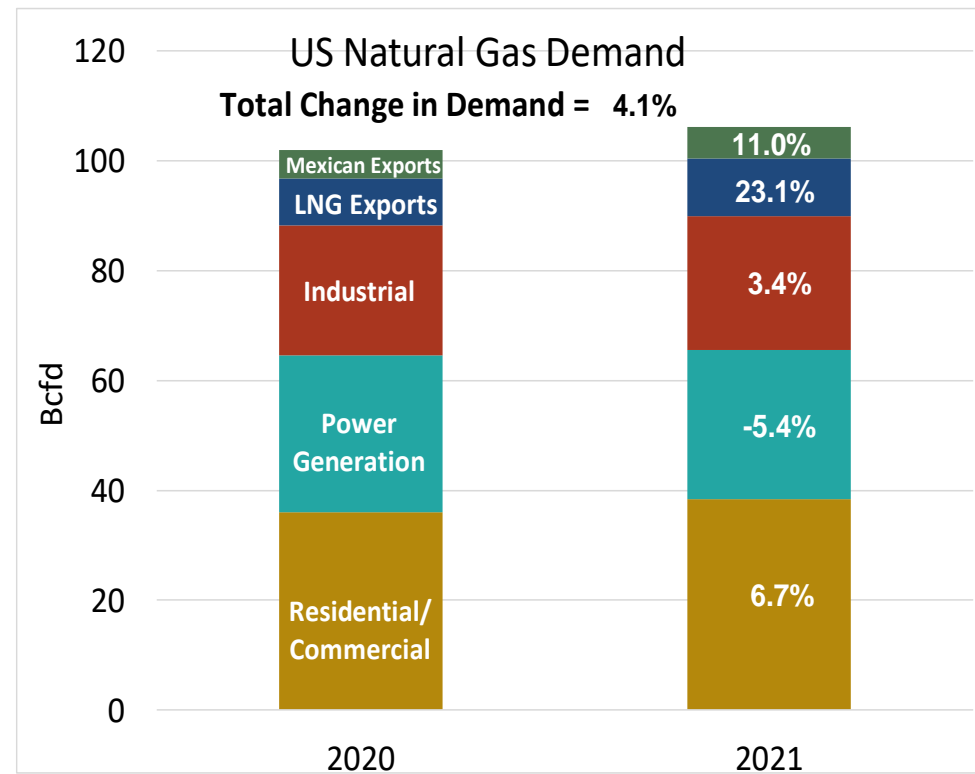
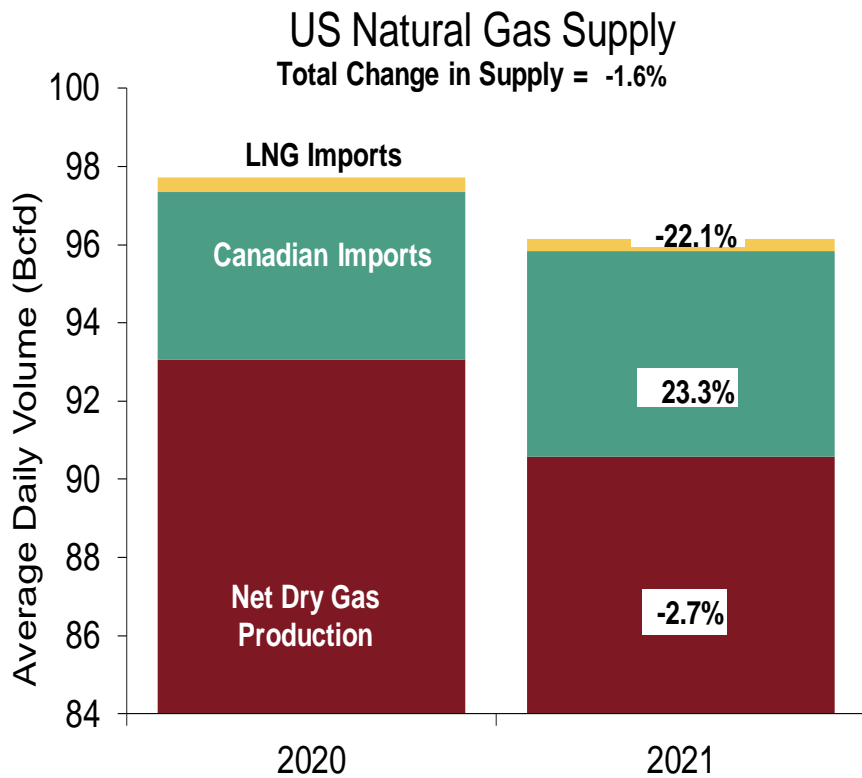
NOAA 3 Month Outlook

Federal Energy Regulatory Commission Market Assessments



U.S. NG Supply and Demand Apr-20 YTD vs. Apr-21 YTD

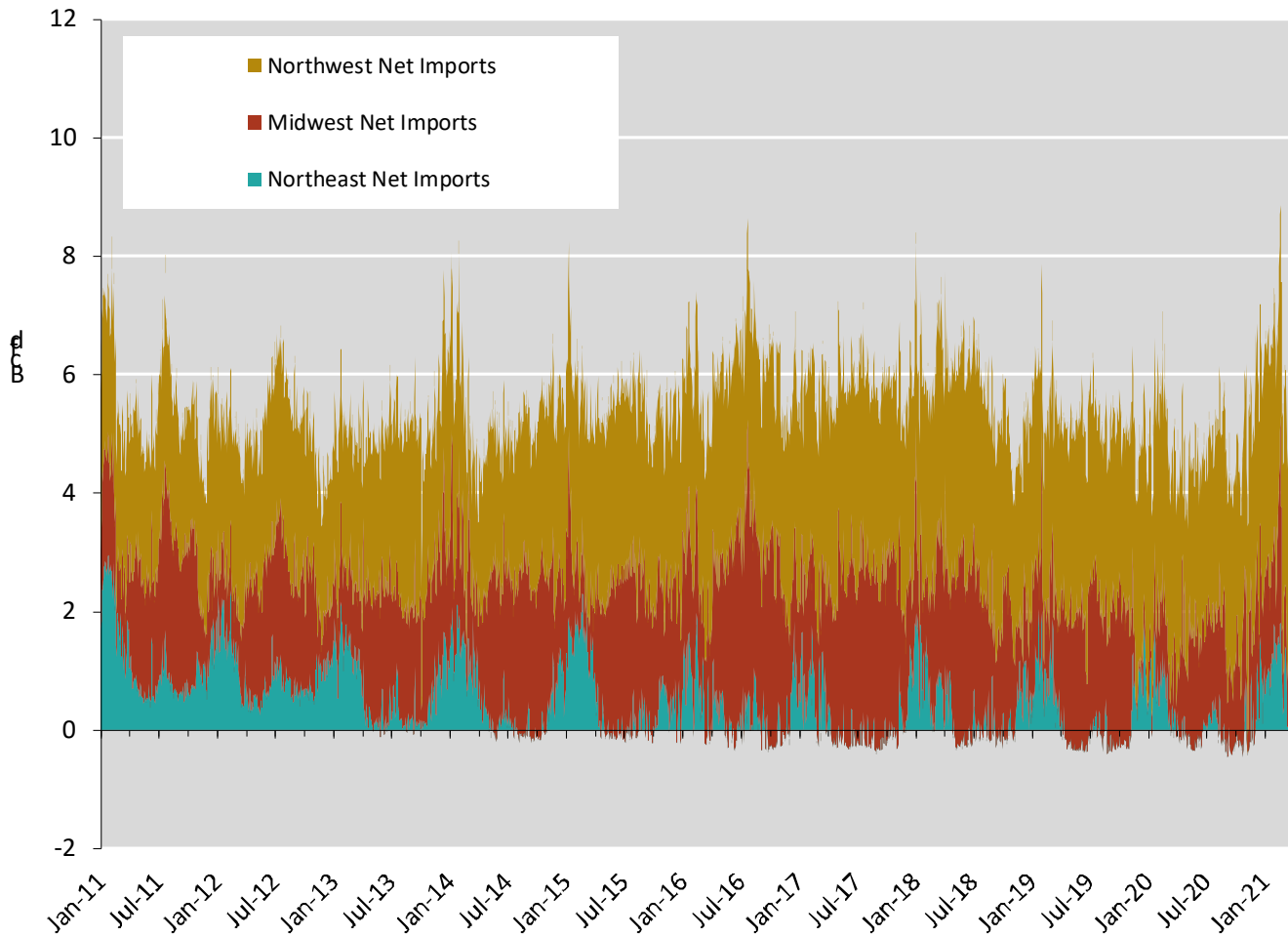
Federal Energy Regulatory Commission **Market Assessments**



Note: Balance includes all amounts not attributable to other categories.
 Source: Derived from S&P Global Bentek Energy data

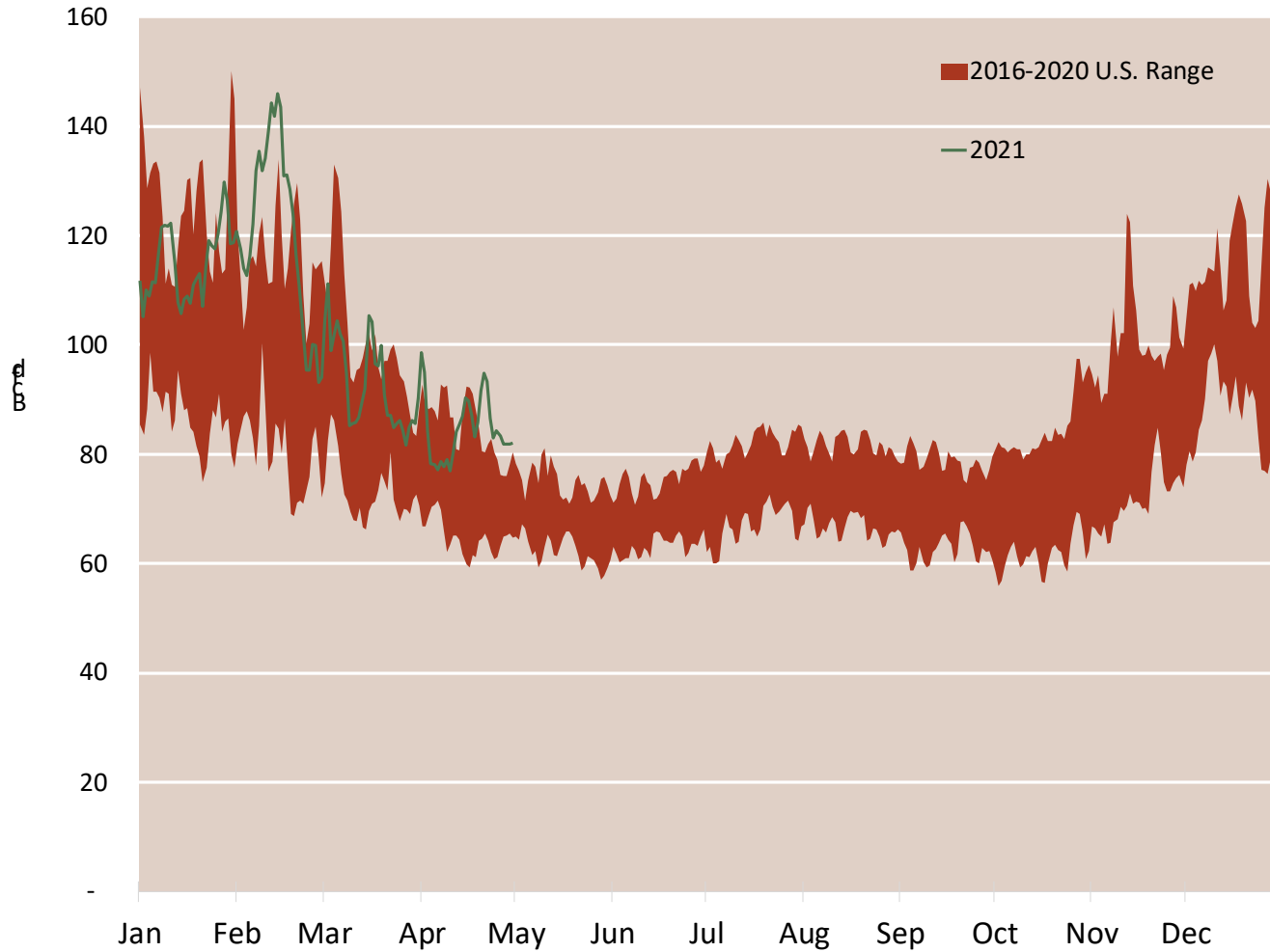
Regional Canadian Imports

Federal Energy Regulatory Commission **Market Assessments**



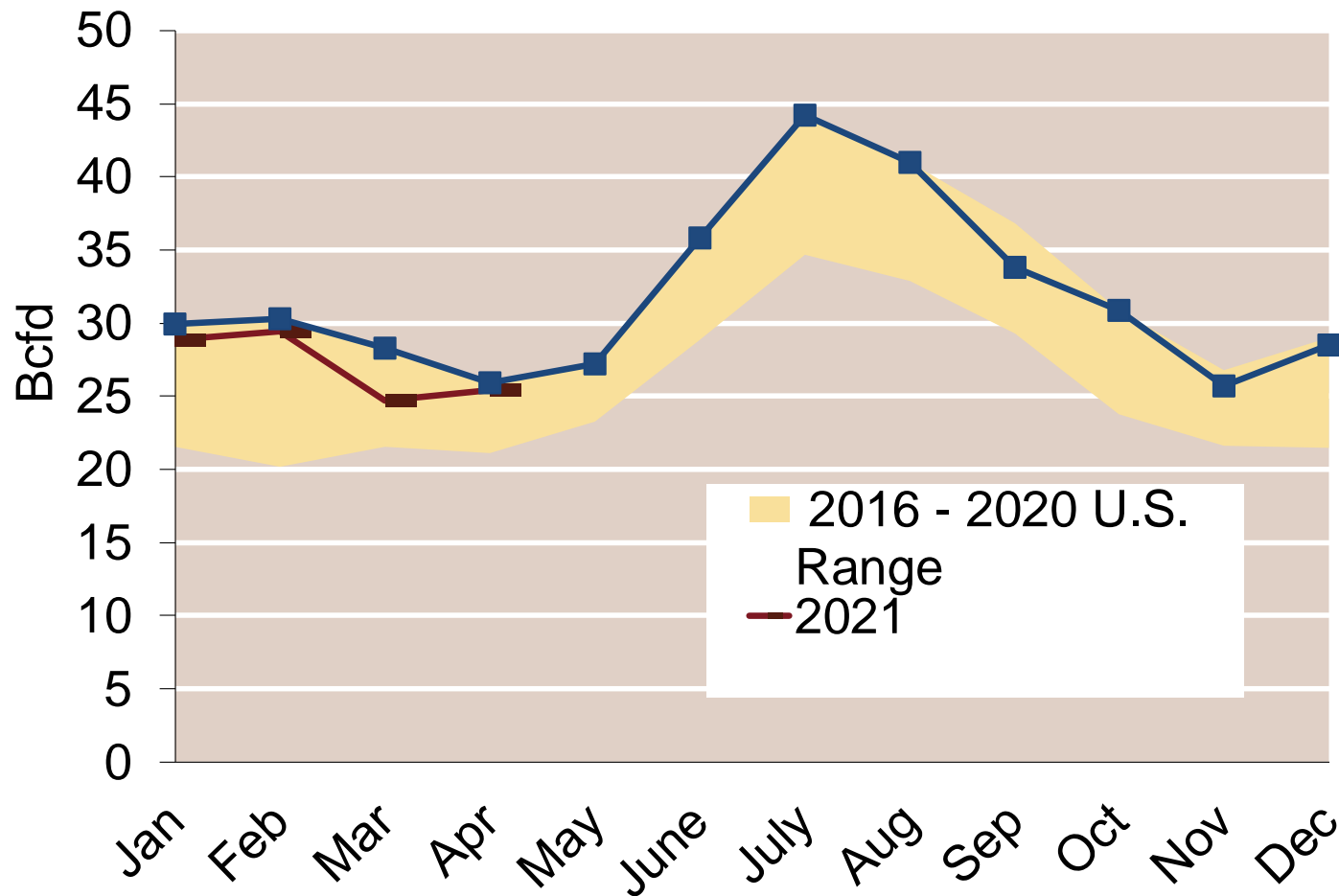
Total U.S. Natural Gas Demand All Sectors

Federal Energy Regulatory Commission **Market Assessments**



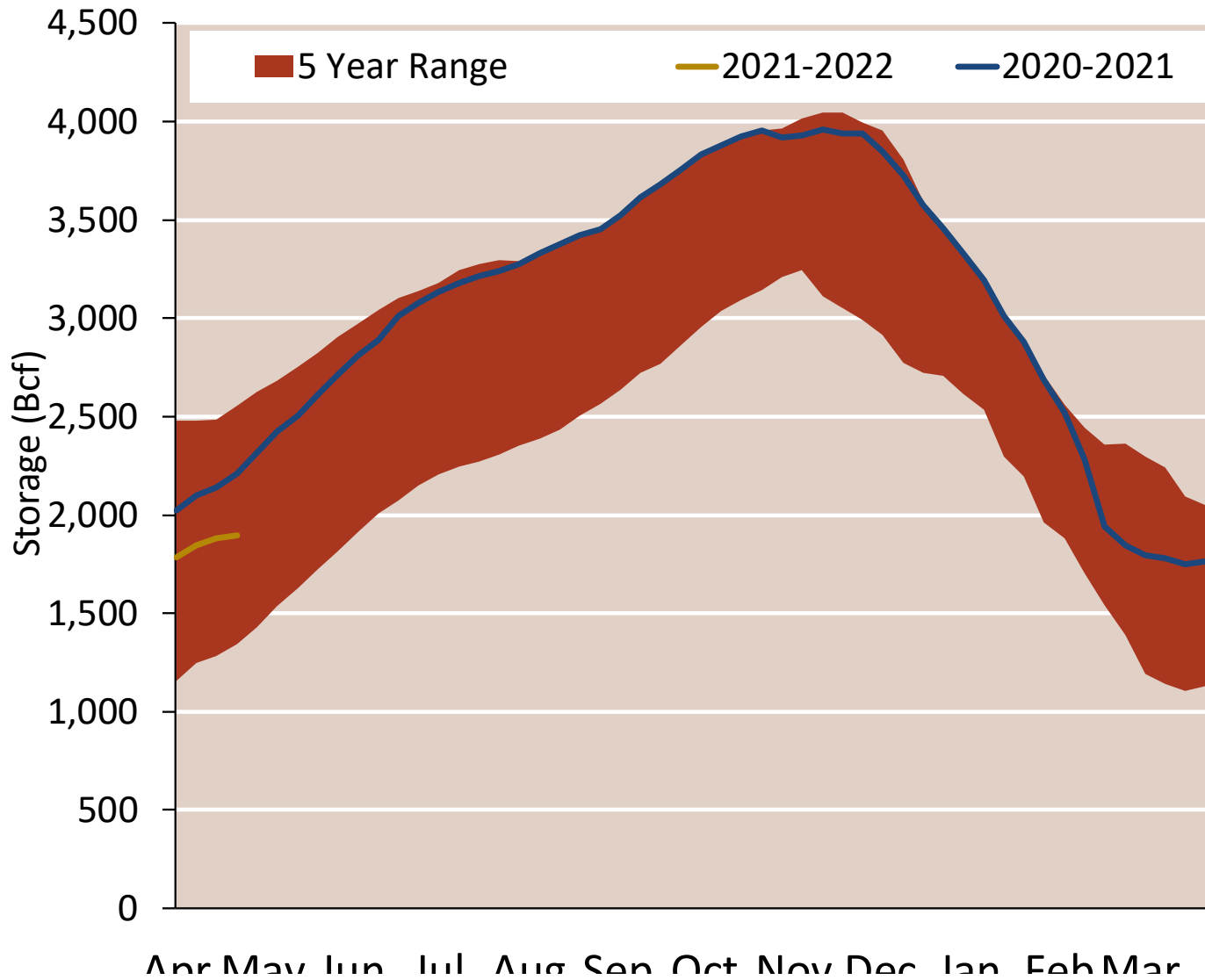
U.S. Natural Gas Consumption for Power Generation

Federal Energy Regulatory Commission **Market Assessments**



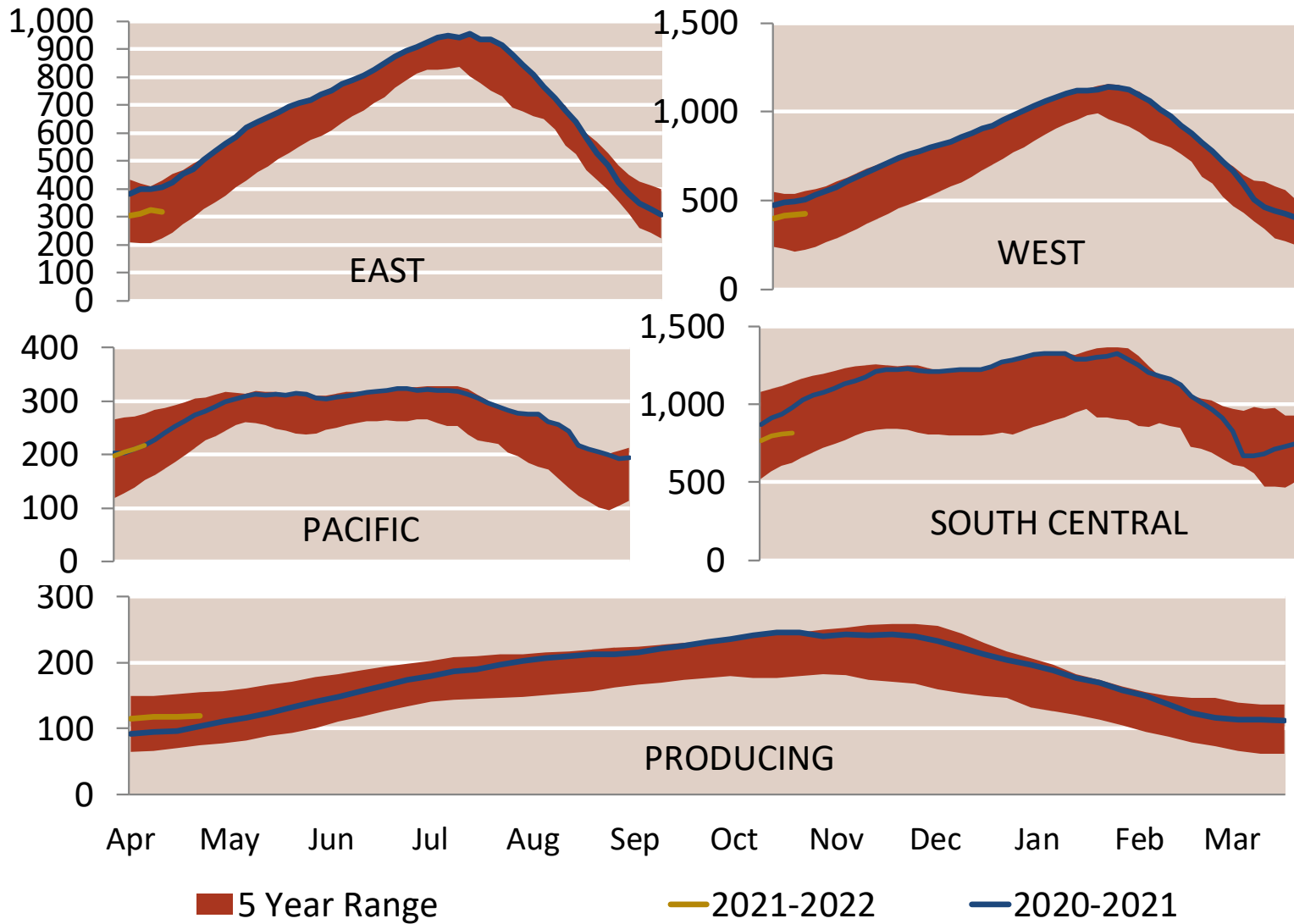
EIA Storage Inventories

Federal Energy Regulatory Commission Market Assessments



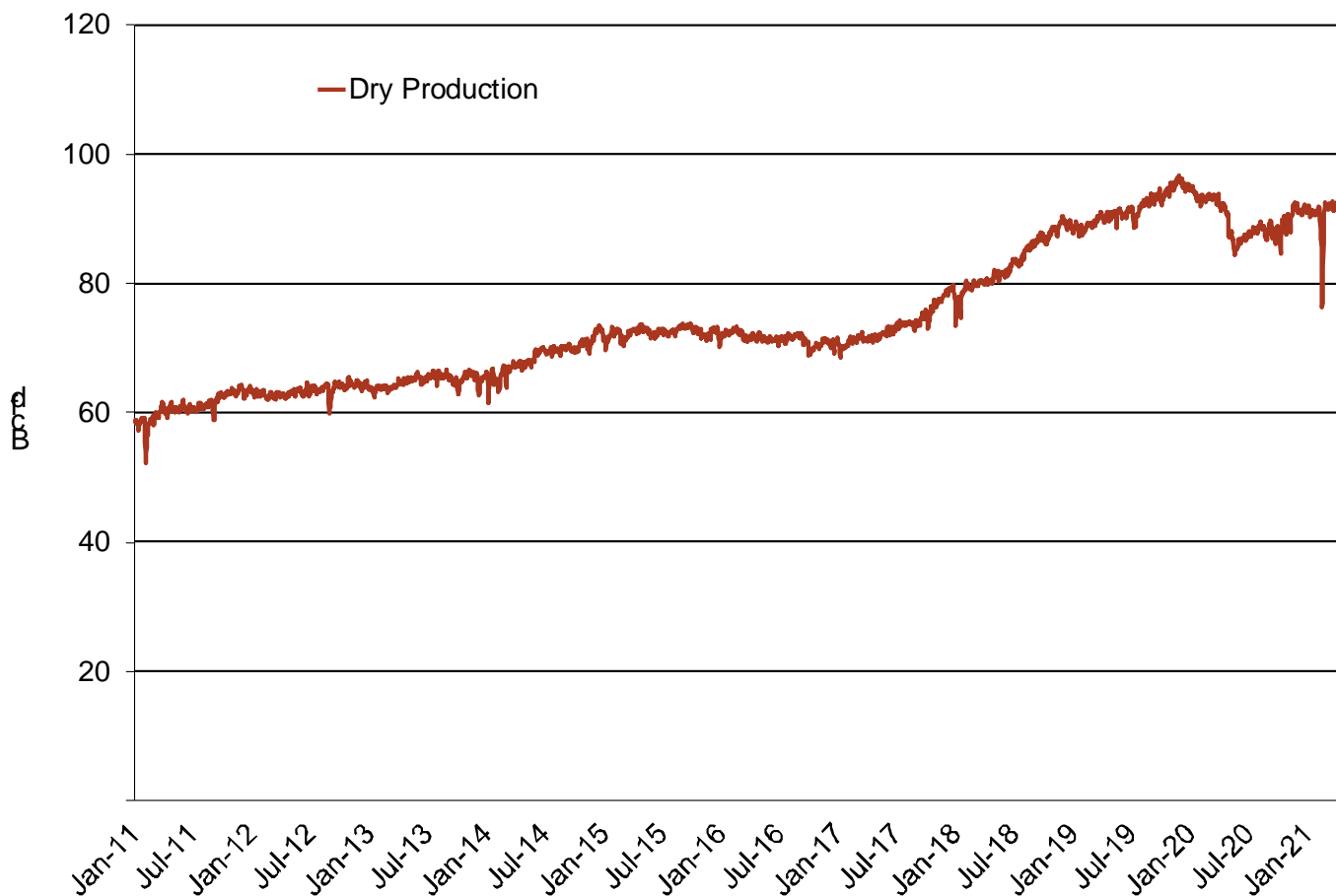
EIA Storage Inventories

Federal Energy Regulatory Commission **Market Assessments**



Monthly U.S. Dry Gas Production – Lower 48 States

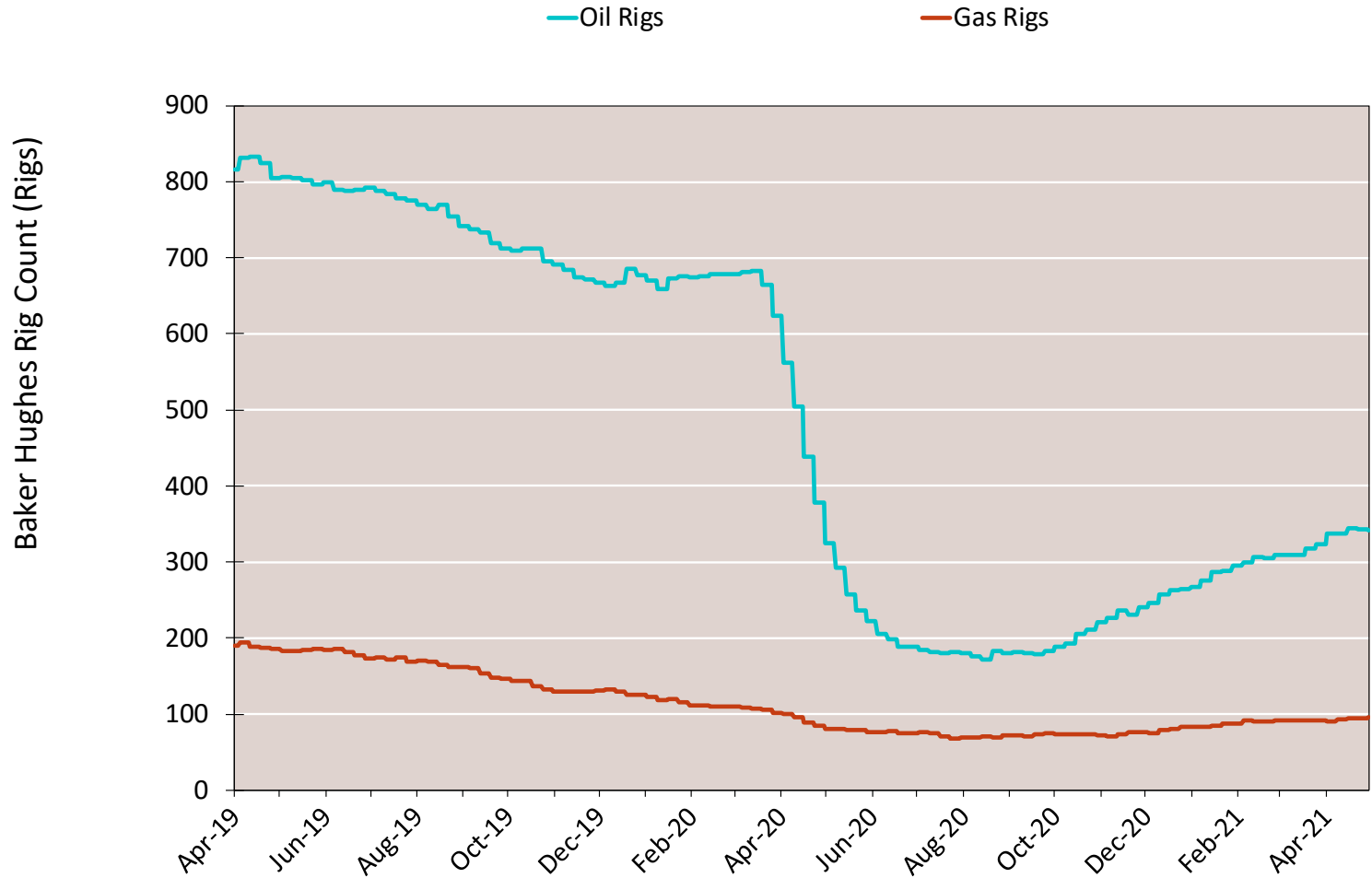
Federal Energy Regulatory Commission **Market Assessments**



Note: Prior to July 2010, chart was derived from a combination of EIA and Bentek Energy data
Source: Derived from S&P Global Bentek Energy data

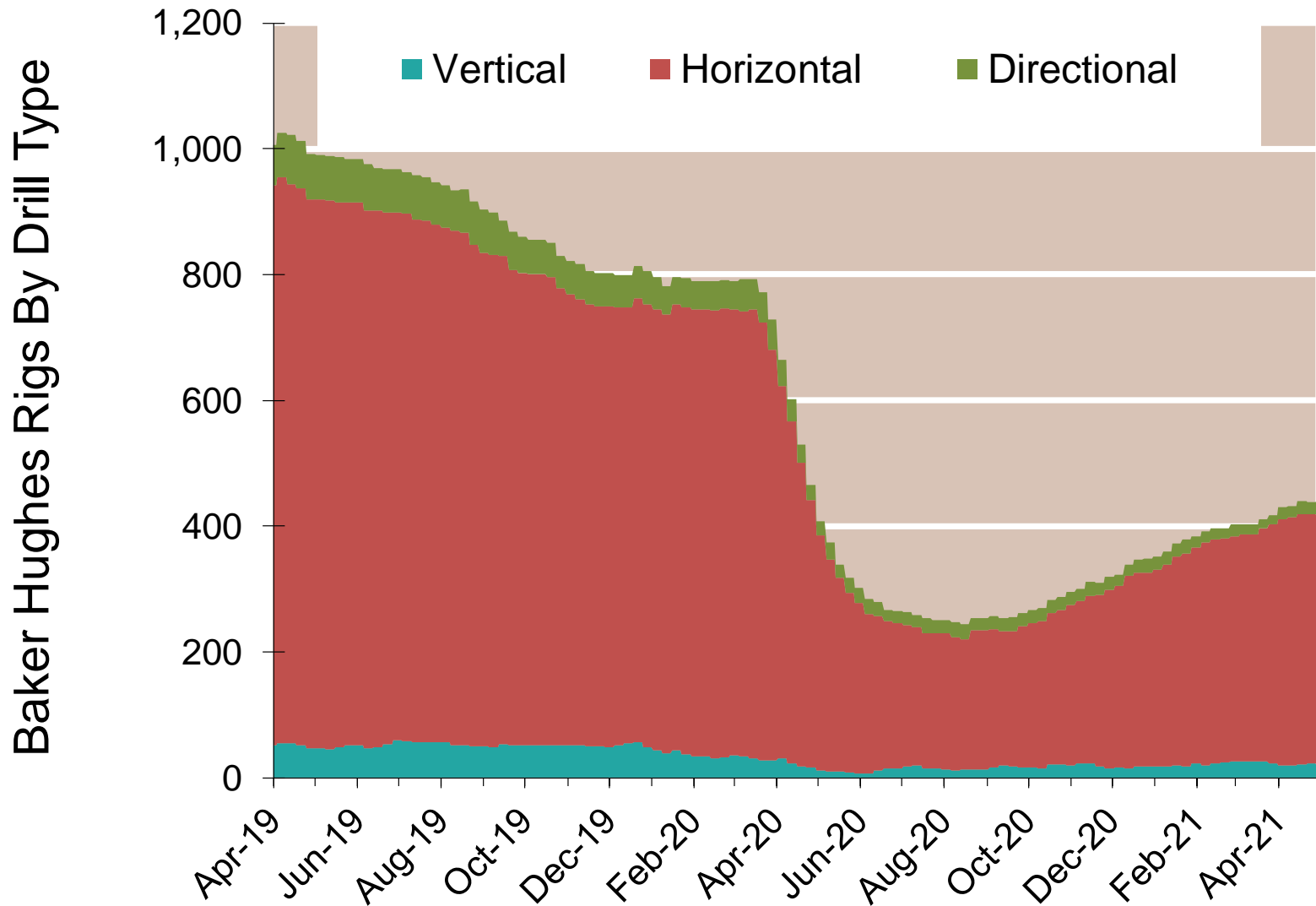
NG Rigs by Fuel Type

Federal Energy Regulatory Commission **Market Assessments**



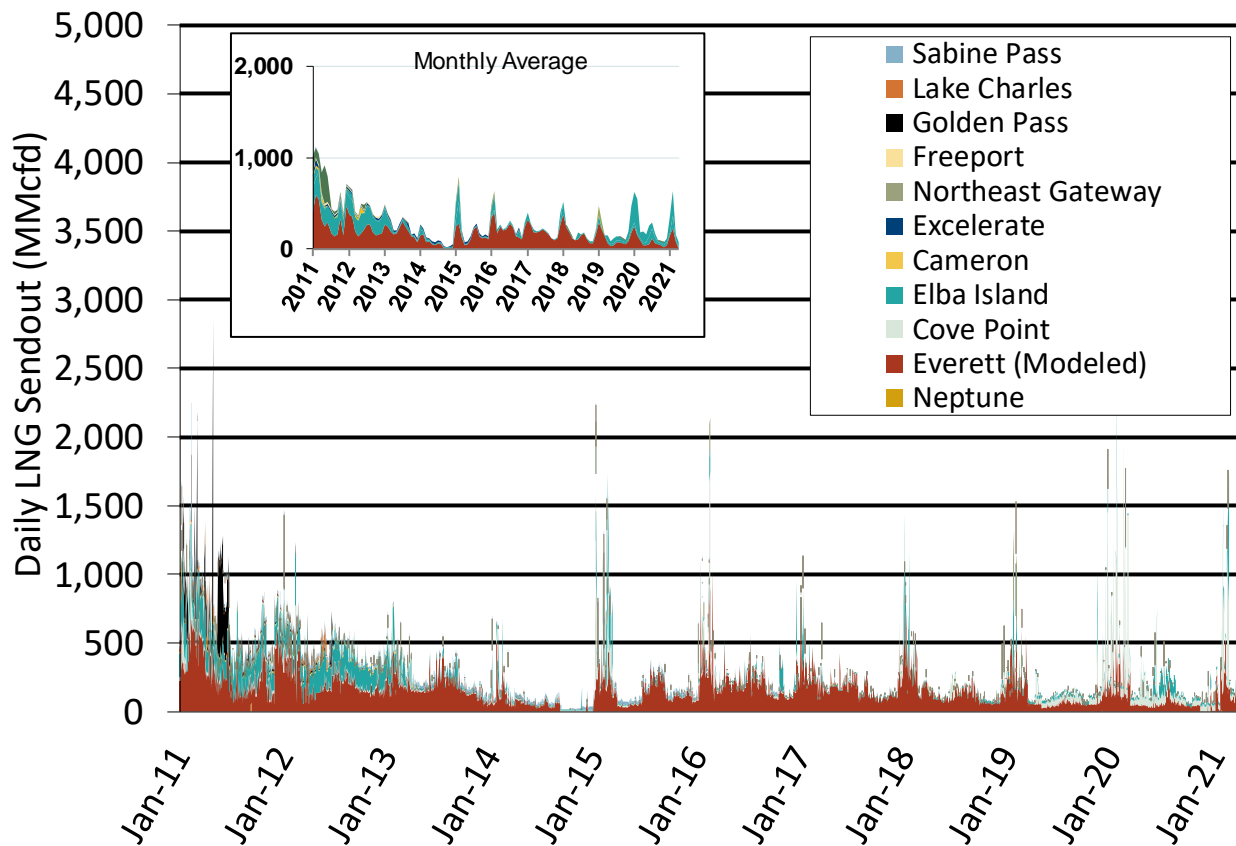
NG Rig by Direction

Federal Energy Regulatory Commission **Market Assessments**



Daily Gas Sendout from Existing U.S. LNG Facilities

Federal Energy Regulatory Commission **Market Assessments**



Notes: Everett data includes flows onto the AGT and TGP interstate lines, plus estimates of flows to the Mystic 7 power plant, Keyspan Boston Gas, and LNG trucked out of the terminal. Excludes flows to the Freeport LNG which flows via intrastate pipelines and flows to the Mystic 8 and 9 power plants.

Source: Derived from S&P Global Bertek Energy data

Updated: May-2021

World LNG Estimated Landed Prices: Apr-21

Federal Energy Regulatory Commission **Market Assessments**



Source: Derived from IHS Global Inc. data. Data in \$US/MMBtu.

Note: Includes information and Data supplied by IHS Global Inc. and its affiliates ("IHS"); Copyright (publication year) all rights reserved. Prices are the monthly average of the weekly landed prices for the listed month. Landed prices are based on a netback calculation.

Updated: May-2021

U.S. Exports of LNG

Federal Energy Regulatory Commission **Market Assessments**

